

STATE OF ILLINOIS
 DEPARTMENT OF TRANSPORTATION
 DIVISION OF HIGHWAYS

**PROPOSED
 HIGHWAY PLANS**

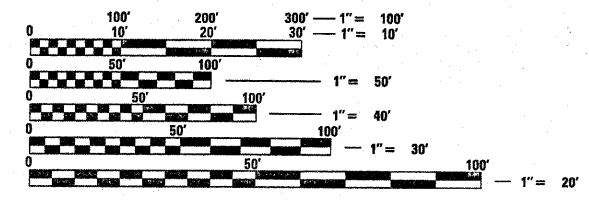
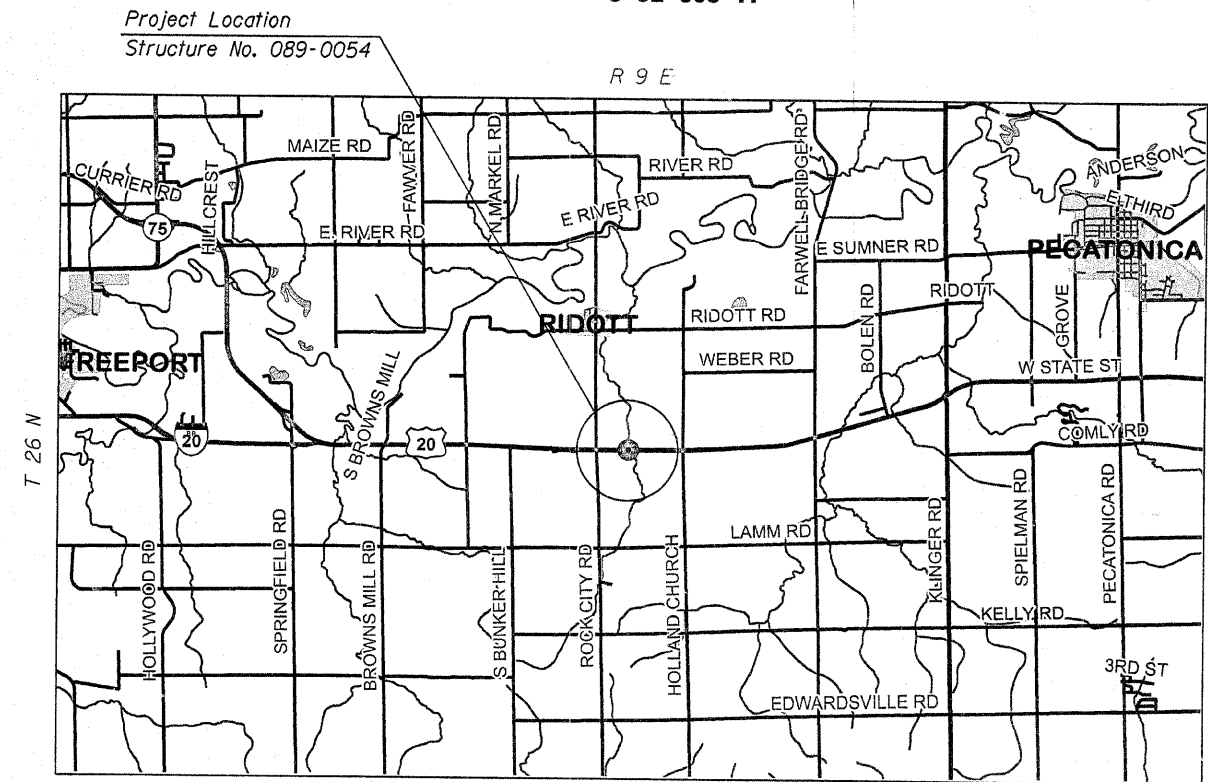
FAP ROUTE 301 (US 20)
 SECTION (18BR-1)M

BRIDGE APPROACH RAISING
 STEPHENSON COUNTY

C-92-063-11

F.A.P. RTE.	SECTION	COUNTY	TOTAL SHEETS	SHEET NO.
301	(18BR-1)M	STEPHENSON	13	1
		ILLINOIS	CONTRACT NO. 64G83	

FOR INDEX OF SHEETS, SEE SHEET NO. 2



FULL SIZE PLANS HAVE BEEN PREPARED USING STANDARD ENGINEERING SCALES. REDUCED SIZED PLANS WILL NOT CONFORM TO STANDARD SCALES. IN MAKING MEASUREMENTS ON REDUCED PLANS, THE ABOVE SCALES MAY BE USED.

J.U.L.I.E.
 JOINT UTILITY LOCATION INFORMATION FOR EXCAVATION
 1-800-892-0123
 OR 811

BRIDGE MAINTENANCE ENGINEER: Mahmoud Etemadi 815/284-5393
 PLAN TECHNICIAN: Dan Link 815/284-5416

CONTRACT NO. 64G83

STATE OF ILLINOIS
 DEPARTMENT OF TRANSPORTATION
 DIVISION OF HIGHWAYS

SUBMITTED December 8 2010
George F. Ryan
 DEPUTY DIRECTOR OF HIGHWAYS, REGION ENGINEER

February 4 2011
Scott E. Stitt P.E.
 acting ENGINEER OF DESIGN AND ENVIRONMENT

February 4 2011
Christine M. Rowland
 DIRECTOR OF HIGHWAYS, CHIEF ENGINEER

PRINTED BY THE AUTHORITY
 OF THE STATE OF ILLINOIS