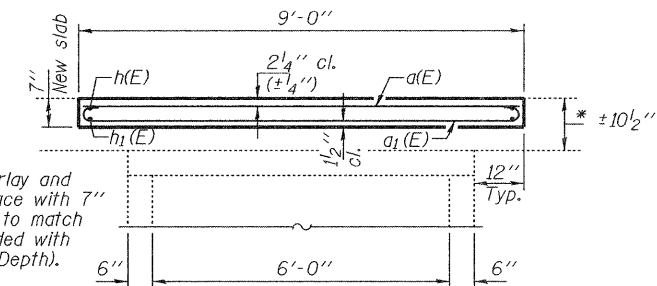


ELEVATION

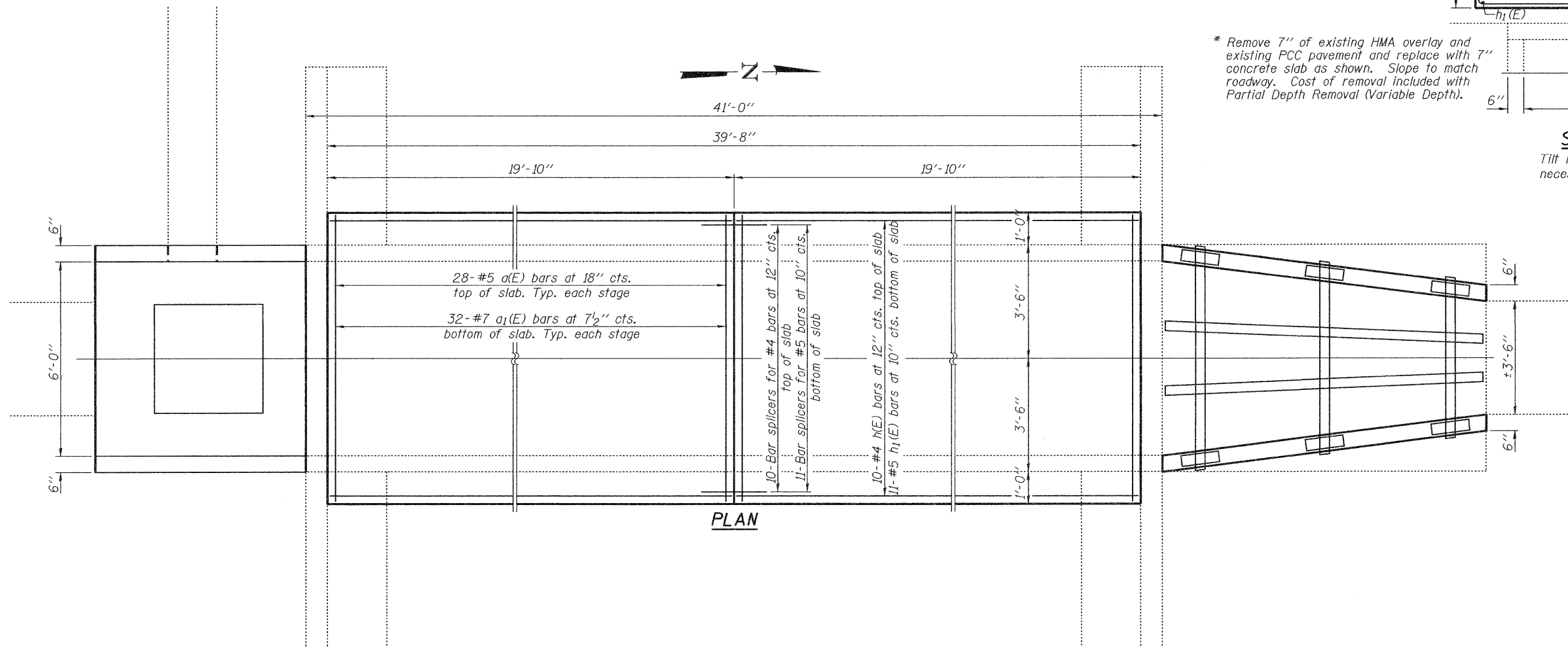
See sheet 3 of 5 for repair details at South end.
See sheet 4 of 5 for repair details at North end.



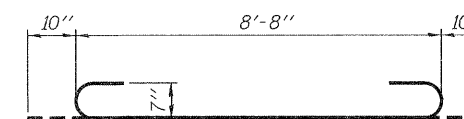
SECTION A-A

Tilt hook of a1(E) bars if necessary for 1/2" min. cl.

* Remove 7" of existing HMA overlay and existing PCC pavement and replace with concrete slab as shown. Slope to match roadway. Cost of removal included with Partial Depth Removal (Variable Depth).



PLAN



BAR a1(E)

**BILL OF MATERIAL
TOP SLAB REPAIR**

Bar	No.	Size	Length	Shape	
a(E)	28	#5	8'-8"	—	
a1(E)	64	#7	11'-2"	U	
h(E)	20	#4	19'-6"	—	
h1(E)	22	#5	19'-6"	—	
Bar Splicers				Each	21
Partial Depth Removal (Variable Depth)				Sq. Yd.	39.7
Reinforcement Bars, Epoxy Coated				Pound	2420
Concrete Superstructure				Cu. Yds.	7.7

DESIGNED DAB
CHECKED VHV
DRAWN balva
CHECKED DAB VHV

EXAMINED *Joanne F. Jeffers*
ACTING ENGINEER OF STRUCTURAL SERVICES
PASSED *Carl King*
ACTING ENGINEER OF BRIDGES AND STRUCTURES
DATE FEBRUARY 3, 2011

STATE OF ILLINOIS
DEPARTMENT OF TRANSPORTATION

REPLACEMENT DETAILS
SN 071-1023

SHEET NO. 2 OF 5 SHEETS

F.A. RTE.	SECTION	COUNTY	TOTAL SHEETS	SHEET NO.
-	117 M	OGLE	10	7
CONTRACT NO. 64684				
ILLINOIS FED. AID PROJECT				