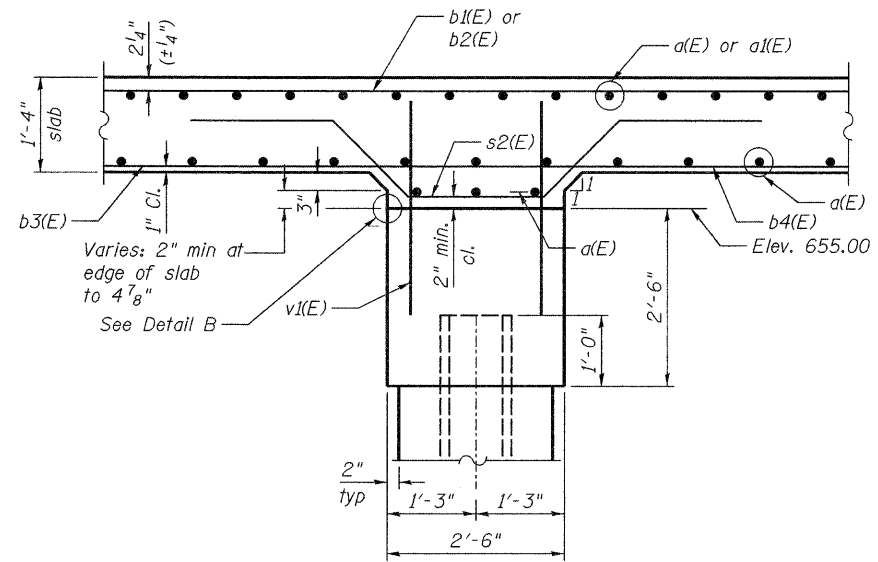
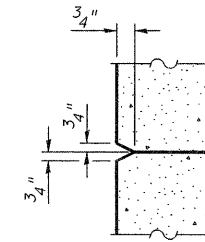


**SECTION A-A**

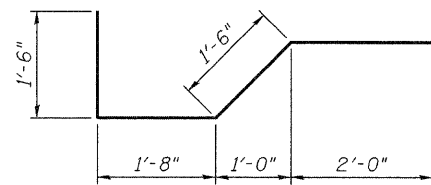
\* See abutment sheet for bar dimensions and placement.



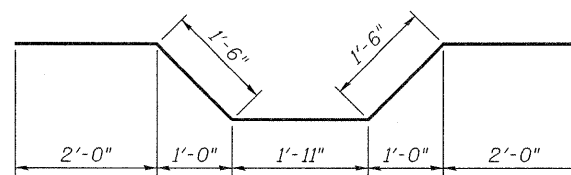
**SECTION B-B**



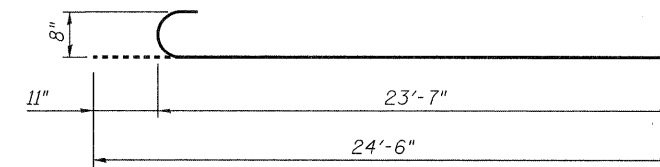
**DETAIL "B"**



**BAR s1(E)**



**BAR s2(E)**



**BAR b3(E)**

**benesch**  
engineers · scientists · planners

Alfred Benesch & Company  
205 North Michigan Avenue, Suite 2400  
Chicago, Illinois 60601  
312-565-0450  
Job No. 3838

FILE NAME =  
... \038-0220-66960-009-dia.dgn

USER NAME = rgr:mmm  
DESIGNED - JDC  
CHECKED - JMS  
DRAWN - MRW  
PLOT SCALE = #SCALE#  
PLOT DATE = 01/24/2011

REVISD -  
REVISD -  
REVISD -  
REVISD -

**STATE OF ILLINOIS  
DEPARTMENT OF TRANSPORTATION**

**INTEGRAL ABUTMENT AND PIER DIAPHRAGM DETAILS  
STRUCTURE NO. 038-0220**

SHEET NO. 9 OF 22 SHEETS

F.A.P. RTE.	SECTION	COUNTY	TOTAL SHEETS	SHEET NO.
681	(117) BR-1	IROQUOIS	41	20
CONTRACT NO. 66960				
FED. ROAD DIST. NO.		ILLINOIS FED. AID PROJECT		