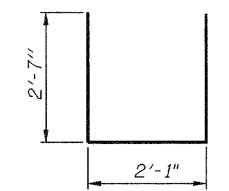
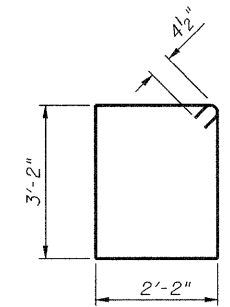
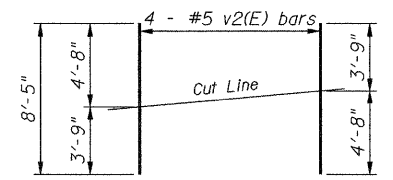
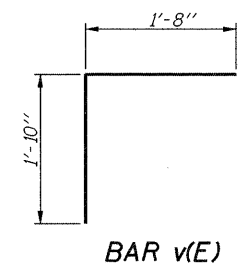


BILL OF MATERIAL

Bar	No.	Size	Length	Shape
h(E)	16	#7	10'-6"	—
h2(E)	12	#5	9'-1"	—
p(E)	16	#7	17'-3"	—
s3(E)	36	#4	11'-5"	□
u(E)	8	#6	7'-3"	□
v(E)	36	#5	3'-6"	Γ
v1(E)	72	#5	3'-0"	—
v2(E)	8	#5	8'-5"	—
v3(E)	12	#5	4'-11"	—
Structure Excavation				Cu. Yd. 329
Concrete Structures				Cu. Yd. 13.7
Reinforcement Bars, Epoxy Coated				Pound 1,850
Furnishing Steel Piles, HP12x53				Foot 180
Driving Piles				Foot 180
Concrete Encasement				Cu. Yd. 2.1

PILE DATA

Type: Steel HP12x53
 Nominal Required Bearing: 211 kips
 Factored Resistance Available: 106 kips
 Est. Length: 30 ft.
 No. Production Piles: 6
 No. Test Piles: 0



NOTES:

- For details of Bar Splicers, see sheet 18 of 22.
- For details of piles and Concrete Encasement, see sheets 17 of 22.
- Minimum bar lap:
 #5 bar = 2'-7"
 #7 bar = 4'-2"



STATE OF ILLINOIS
 DEPARTMENT OF TRANSPORTATION

WEST ABUTMENT DETAILS
 STRUCTURE NO. 038-0220

F.A.P. RTE.	SECTION	COUNTY	TOTAL SHEETS	SHEET NO.
681	(117) BR-1	IROQUOIS	41	24
CONTRACT NO. 66960			ILLINOIS FED. AID PROJECT	

FILE NAME =	USER NAME = rgrmm	DESIGNED - JDC	REVISED -
...V038-0220-66960-013-wabut.dgn		CHECKED - JMS	REVISED -
		DRAWN - MRW	REVISED -
		CHECKED - JDC	REVISED -

SHEET NO. 13 OF 22 SHEETS

x:\3900s\3938\Structures\IL116overLangenCreek\Plan\Plans\038-0220-66960-013-wabut.dgn
 15:30:43
 01\24\2011