

BILL OF MATERIAL

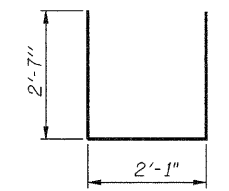
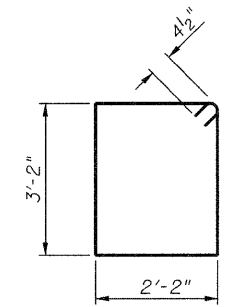
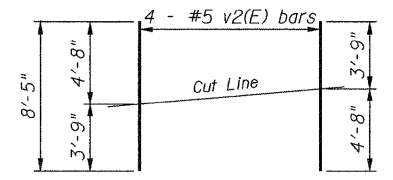
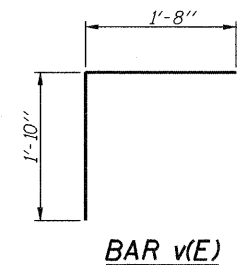
Bar	No.	Size	Length	Shape	
h(E)	16	#7	10'-6"	—	
h2(E)	12	#5	9'-1"	—	
p(E)	16	#7	17'-3"	—	
s3(E)	36	#4	11'-5"	□	
u(E)	8	#6	7'-3"	—	
v(E)	36	#5	3'-6"	┌	
v1(E)	72	#5	3'-0"	—	
v2(E)	8	#5	8'-5"	—	
v3(E)	12	#5	4'-11"	—	
Structure Excavation				Cu. Yd.	312
Concrete Structures				Cu. Yd.	13.4
Reinforcement Bars, Epoxy Coated				Pound	1,850
Furnishing Steel Piles, HP12x53				Foot	150
Driving Piles				Foot	150
Test Pile Steel, HP12x53				Each	1
Concrete Encasement				Cu. Yd.	2.1

PILE DATA

Type: Steel HP12x53
 Nominal Required Bearing: 223 kips
 Factored Resistance Available: 112 kips
 Est. Length: 30 ft.
 No. Production Piles: 5
 No. Test Piles: *1

*1 Test Pile to be driven in a permanent location.

The test piles shall be driven to 110 percent of the Nominal Required Bearing indicated above.



NOTES:

- For details of Bar Splicers, see sheet 18 of 22.
- For details of piles and Concrete Encasement, see sheet 17 of 22.
- Minimum bar lap:
 #5 bar = 2'-7"
 #7 bar = 4'-2"

benesch
 engineers · scientists · planners
 Alfred Benesch & Company
 205 North Michigan Avenue, Suite 2400
 Chicago, Illinois 60601
 312-665-0450
 Job No. 3938

FILE NAME = ...N038-0220-66960-014-eabut.dgn	USER NAME = rgrimm	DESIGNED - JDC	REVISED -	STATE OF ILLINOIS DEPARTMENT OF TRANSPORTATION	EAST ABUTMENT DETAILS STRUCTURE NO. 038-0220	F.A.P. RTE. 681	SECTION (117) BR-1	COUNTY IROQUOIS	TOTAL SHEETS 41	SHEET NO. 25	
PLOT SCALE = #SCALE#	DRAWN - MRW	CHECKED - JMS	REVISED -			CONTRACT NO. 66960					
PLOT DATE = 01/24/2011	CHECKED - JDC	DRAWN - MRW	REVISED -			SHEET NO. 14 OF 22 SHEETS					
						FED. ROAD DIST. NO.		ILLINOIS FED. AID PROJECT			

x:\3900s\3938\Structures\116overLanganCreek\Plans\038-0220-66960-014-eabut.dgn
 15:31:03
 01/24/2011