

SEC. THRU CAP.

BILL OF MATERIAL - PIER

Bar No.	Size	Length	Shape
p1(E)	#7	17'-9"	—
h1(E)	#5	16'-8"	—
s4(E)	#5	9'-7"	□
u1(E)	#6	16'-1"	┌
u2(E)	#5	9'-1"	┌
u3(E)	#5	3'-1"	┌
v1(E)	#5	3'-0"	—
v4(E)	#5	13'-10"	—
Structure Excavation Cu. Yd. 5			
Concrete Structures Cu. Yd. 42.4			
Reinforcement Bars, Epoxy Coated Pound 4,290			
Furnishing Steel Piles, HP12x53 Foot 315			
Driving Piles Foot 315			
Test Pile Steel, HP12x53 Each 1			
Underwater Structure Excavation Protection - Location 1 Each 1			
Concrete Encasement Cu. Yd. 2.8			

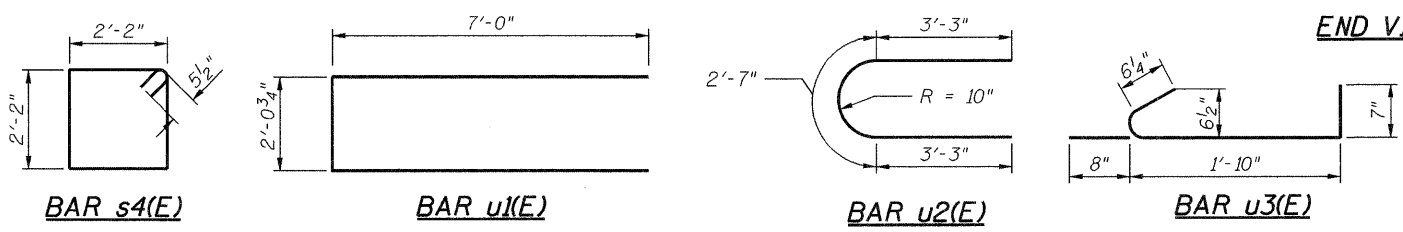
PILE DATA

Type: Steel HP12x53
 Nominal Required Bearing: 278 kips
 Factored Resistance Available: 139 kips
 Est. Length: 45 ft.
 No. Production Piles: 7
 No. Test Piles: *1

*1 Test Pile to be driven in a permanent location. The test piles shall be driven to 110 percent of the Nominal Required Bearing indicated above.

NOTES:

1. For details of Bar Splicers, see sheet 18 of 22.
2. For details of piles and Concrete Encasement, see sheet 17 of 22.
3. If a portion of the pier wall or concrete encasement is underwater, reinforcement may be placed underwater into forms. Concrete shall be tremied according to Article 503.08 of the Standard Specifications to an elevation of 1'-0" above the water line at the time of construction.
4. Bars indicates thus:
 9 x 12 - #5 etc., indicates 9 lines of #5 bars with 12 lengths per line.



benesch
 engineers · scientists · planners
 Alfred Benesch & Company
 205 North Michigan Avenue, Suite 2400
 Chicago, Illinois 60601
 312-565-0450
 Job No. 3938

FILE NAME = ... \838-0220-66960-015-p1er.dgn	USER NAME = rgrmm	DESIGNED - JDC	REVISD -	STATE OF ILLINOIS DEPARTMENT OF TRANSPORTATION	PIER 1 DETAILS STRUCTURE NO. 038-0220	F.A.P. RTE. 681	SECTION (117) BR-1	COUNTY IROQUOIS	TOTAL SHEETS 41	SHEET NO. 26
PLOT SCALE = #SCALE#	DRAWN - MRW	REVISD -	FED. ROAD DIST. NO.			ILLINOIS FED. AID PROJECT				
PLOT DATE = 01/24/2011	CHECKED - JDC	REVISD -	CONTRACT NO. 66960							
						SHEET NO. 15 OF 22 SHEETS				

x:\3900s\Structures\IL116overLanganCreek\Final\Plans\038-0220-66960-015-p1er.dgn 14:51:25 01/24/2011