

STANDARD BAR SPLICER ASSEMBLY

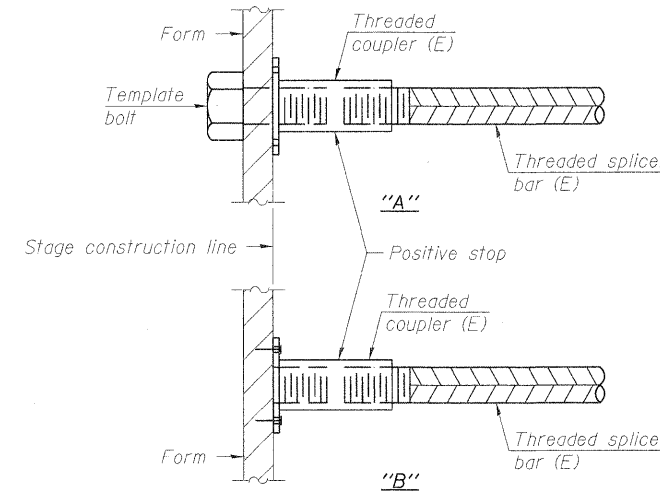
Minimum Lap Lengths					
Bar size to be spliced	Table 1	Table 2	Table 3	Table 4	Table 5
3, 4	1'-5"	1'-11"	2'-1"	2'-4"	2'-3"
5	1'-9"	2'-5"	2'-7"	2'-11"	2'-10"
6	2'-1"	2'-11"	3'-1"	3'-6"	3'-4"
7	2'-9"	3'-10"	4'-2"	4'-8"	4'-6"
8	3'-8"	5'-1"	5'-5"	6'-2"	5'-10"
9	4'-7"	6'-5"	6'-10"	7'-9"	7'-5"

- Table 1: Black bar, 0.8 Class C
- Table 2: Black bar, Top bar lap, 0.8 Class C
- Table 3: Epoxy bar, 0.8 Class C
- Table 4: Epoxy bar, Top bar lap, 0.8 Class C
- Table 5: Epoxy bar, Top bar lap, Class B

Threaded splicer bar length = min. lap length + 1/2" + thread length

* Epoxy not required on Bar Splicer Assembly components used in conjunction with black bars.

Bar Size	No. Assemblies Required	Location
#4	25	West Approach
#4	25	East Approach
#5	137	Deck
#5	46	West Approach
#5	46	East Approach
#5	24	Pier 1 Wall
#5	24	Pier 2 Wall
#5	40	West Approach Footing
#5	40	East Approach Footing
#7	8	West Abutment
#7	8	East Abutment
#7	9	Pier 1 Cap
#7	9	Pier 2 Cap



INSTALLATION AND SETTING METHODS

- "A" : Set bar splicer assembly by means of a template bolt.
- "B" : Set bar splicer assembly by nailing to wood forms or cementing to steel forms.
- (E) : Indicates epoxy coating.

NOTES

- Splicer bars shall be deformed with threaded ends and have a minimum 60 ksi yield strength.
- All reinforcement shall be lapped and tied to the splicer bars.
- Bar splicer assemblies shall be epoxy coated according to the requirements for reinforcement bars. See Section 508 of the Standard Specifications.
- See approved list of bar splicer assemblies for alternatives.

benesch
engineers · scientists · planners

Alfred Benesch & Company
205 North Michigan Avenue, Suite 2400
Chicago, Illinois 60601
312-565-0450

Job No. 3938

FILE NAME = ...038-0220-66960-018-brsp.dgn	USER NAME = j_craisher	DESIGNED - JDC	REVISD -	STATE OF ILLINOIS DEPARTMENT OF TRANSPORTATION	BAR SPLICER ASSEMBLY AND MECHANICAL SPLICER DETAILS STRUCTURE NO. 038-0220	F.A.P. RTE. 681	SECTION (117) BR-1	COUNTY IROQUOIS	TOTAL SHEETS 41	SHEET NO. 29	
PLOT SCALE = #SCALE#		DRAWN - MRW	REVISD -			SHEET NO. 18 OF 22 SHEETS		FED. ROAD DIST. NO.		ILLINOIS FED. AID PROJECT	
PLOT DATE = 12/09/2010		CHECKED - JDC	REVISD -			CONTRACT NO. 66960					
						CONTRACT NO. 66960					

x:\3900s\3938\structures\1116over\langencreek\final\plans\038-0220-66960-018-brsp.dgn

17:51:04

12/09/2010