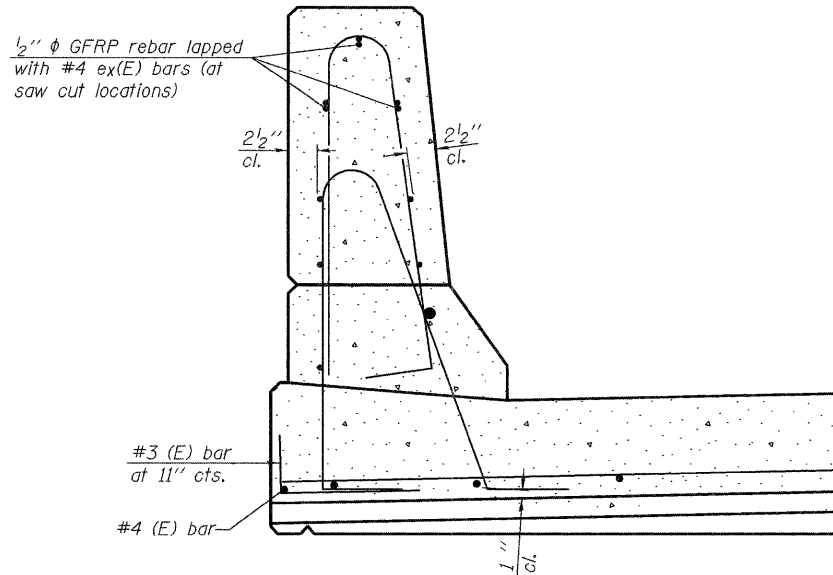


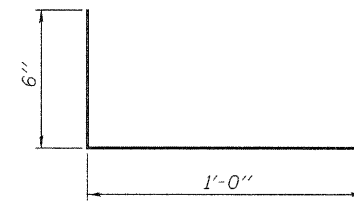
SECTION
(Showing dimensions)



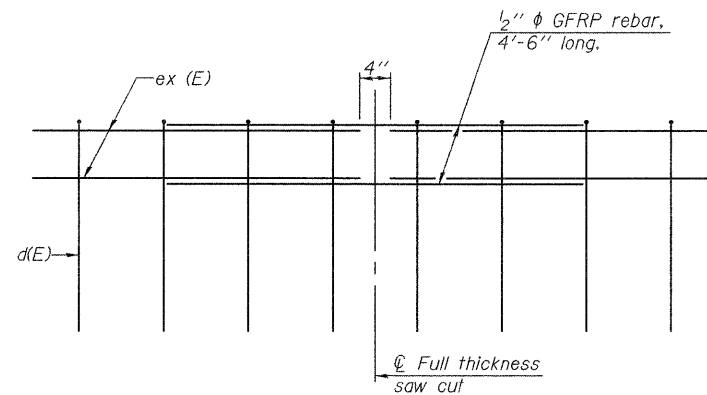
SECTION
(Showing reinforcement clearances for slip forming and additional reinforcement bars)

GENERAL NOTES

All dimensions shall remain the same as shown on contract plans, except dimension A which are to be revised as shown to provide additional clearance. Additional concrete needed to revise dimension A = 0.0165 cu. yds./ft. of parapet. Place aluminum sheet in curb portion at abutment only. Full thickness saw cut at all joint locations in lieu of cork joint filler.



#3 (E) BAR



GFRP REBAR STIFFENING DETAIL
(Place as shown in parapet section at each parapet joint location.)

benesch
engineers · scientists · planners
Alfred Benesch & Company
205 North Michigan Avenue, Suite 2400
Chicago, Illinois 60601
312-665-0460
Job No. 3938

FILE NAME = ...\\038-0220-66960-019-slipf.m.dgn	USER NAME = rgr1mm	DESIGNED - JDC	REVISED -	STATE OF ILLINOIS DEPARTMENT OF TRANSPORTATION	CONCRETE PARAPET SLIPFORMING OPTION STRUCTURE NO. 038-0220	F.A.P. RTE. 681	SECTION (117) BR-1	COUNTY IROQUOIS	TOTAL SHEETS 41	SHEET NO. 30
PLOT SCALE = \$SCALE\$	DRAWN - MRW	REVISED -				CONTRACT NO. 66960				
PLOT DATE = 01/24/2011	CHECKED - JDC	REVISED -				SHEET NO. 19 OF 22 SHEETS				
						FED. ROAD DIST. NO. ILLINOIS FED. AID PROJECT				

x:\3900s\3938\Structures\1116overLangenCreek\Final\Plans\038-0220-66960-019-slipf.m.dgn

150449

01/24/2011