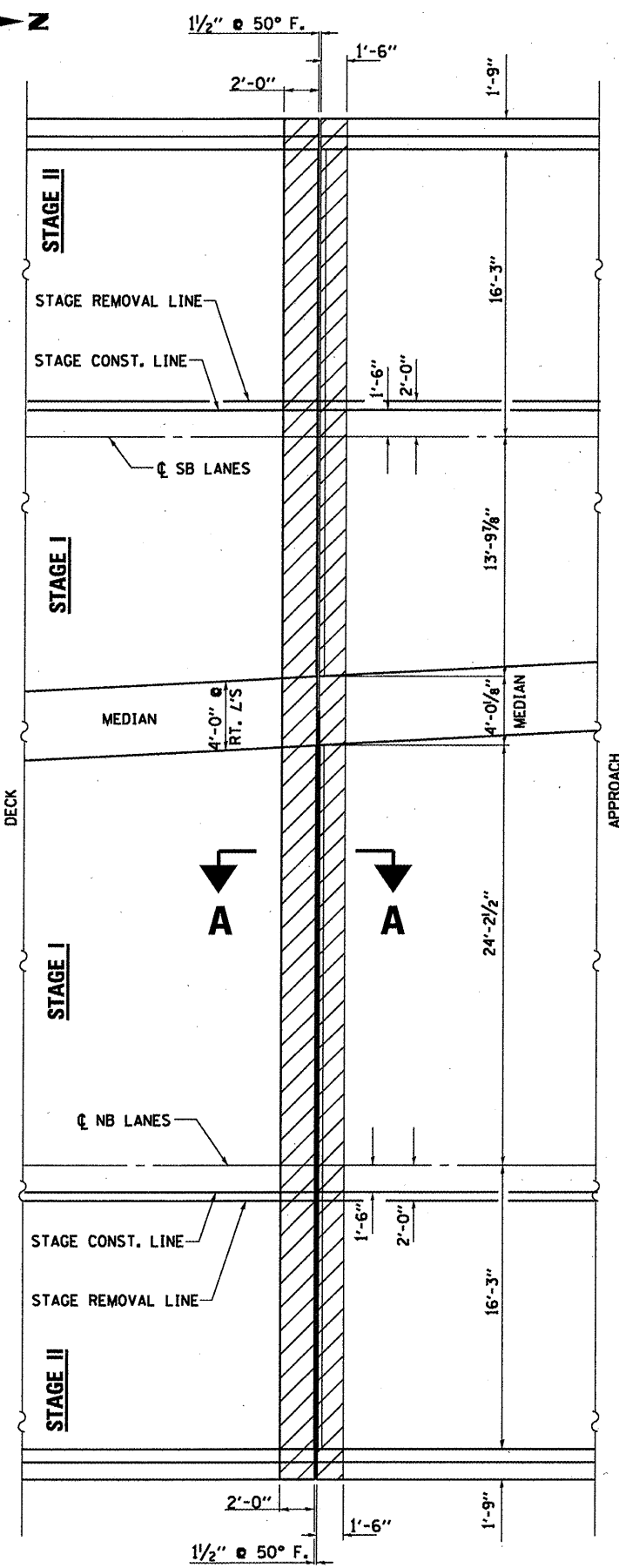
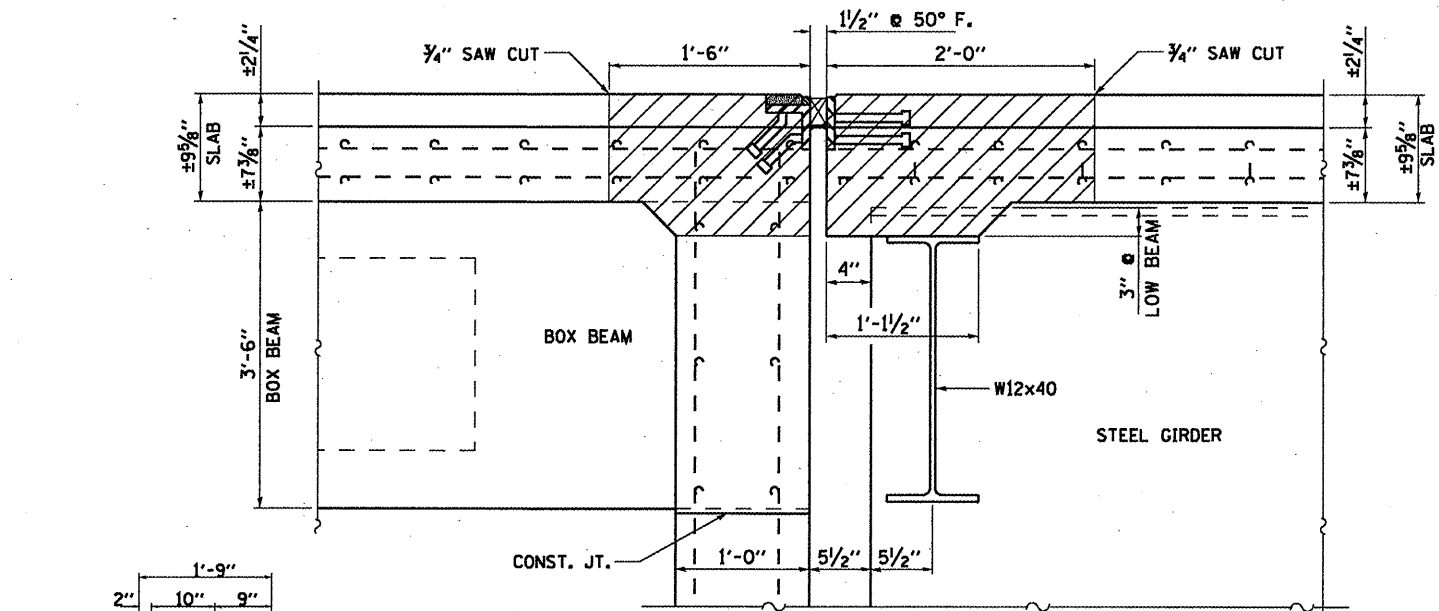


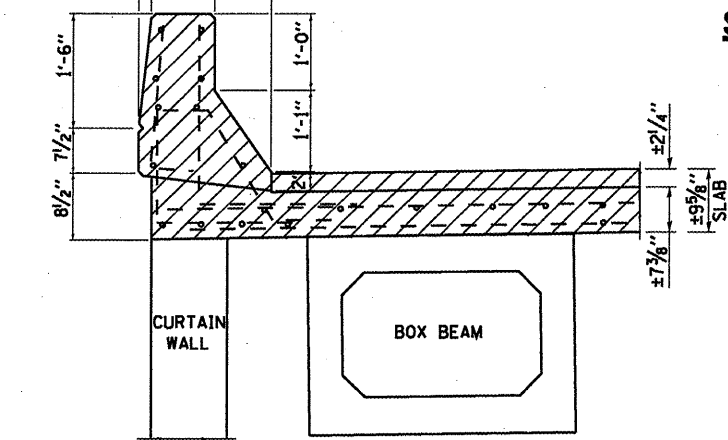
**SOUTH ABUTMENT**



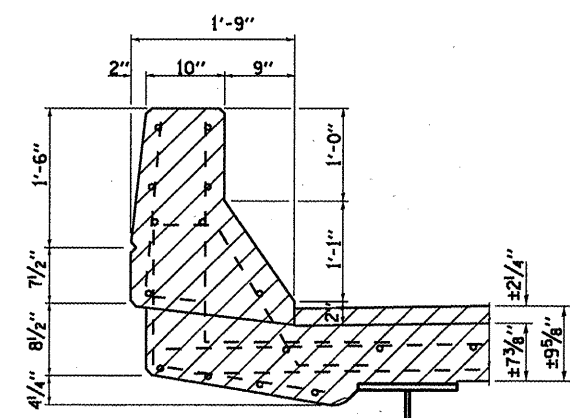
**NORTH ABUTMENT**



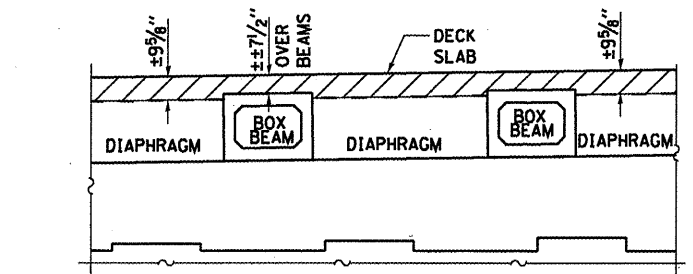
**SECTION A-A**



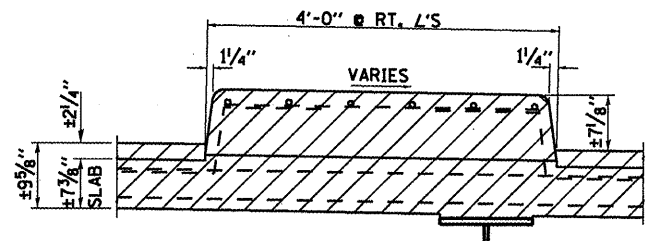
**SECTION AT PARAPET (APPROACH)**



**SECTION AT PARAPET (DECK)**



**PARTIAL SECTION ACROSS DECK**



**SECTION AT MEDIAN**

**NOTES**

- HATCHED AREA REPRESENTS CONCRETE REMOVAL LIMITS.
- EXISTING REINFORCEMENT BARS EXTENDING INTO THE REMOVAL AREA SHALL BE CLEANED, STRAIGHTENED AND INCORPORATED INTO THE NEW CONSTRUCTION. ANY REINFORCEMENT BARS THAT ARE DAMAGED DURING CONCRETE REMOVAL SHALL BE REPLACED WITH AN APPROVED BAR SPLICER OR ANCHORAGE SYSTEM. COST INCLUDED WITH CONCRETE REMOVAL.
- THE CONTRACTOR SHALL USE EXTREME CARE DURING CONCRETE REMOVAL SO AS NOT TO DAMAGE THE PPC BOX BEAM.

**EXPANSION JOINT DETAILS - REMOVAL**  
**FAS 2370 (IL 26) SECTION (78-1HB-1)**  
**PUTNAM COUNTY**  
**STA. 40+00.00**  
**S.N. 078-0010**

FILE NAME =	USER NAME = woodshankr1	DESIGNED - RLW	REVISED -	STATE OF ILLINOIS DEPARTMENT OF TRANSPORTATION	<b>EXPANSION JOINT DETAILS - REMOVAL</b>	F.A.S. RTE. 2370	SECTION (78-1HB-1)	COUNTY PUTNAM	TOTAL SHEETS 18	SHEET NO. 10	
MAIN1-0368A27-details.dgn	DRAWN - RLW	CHECKED -	REVISED -			SCALE: _____	SHEET NO. 4 OF 12 SHEETS	STA. _____	TO STA. _____	CONTRACT NO. 66A27	
PLOT SCALE = 100.0000 / IN.	DATE -	REVISD -	REVISD -			ILLINOIS FED. AID PROJECT					
PLOT DATE = Dec 15, 2010 - 11:07:56 AM	DATE -	REVISD -	REVISD -								