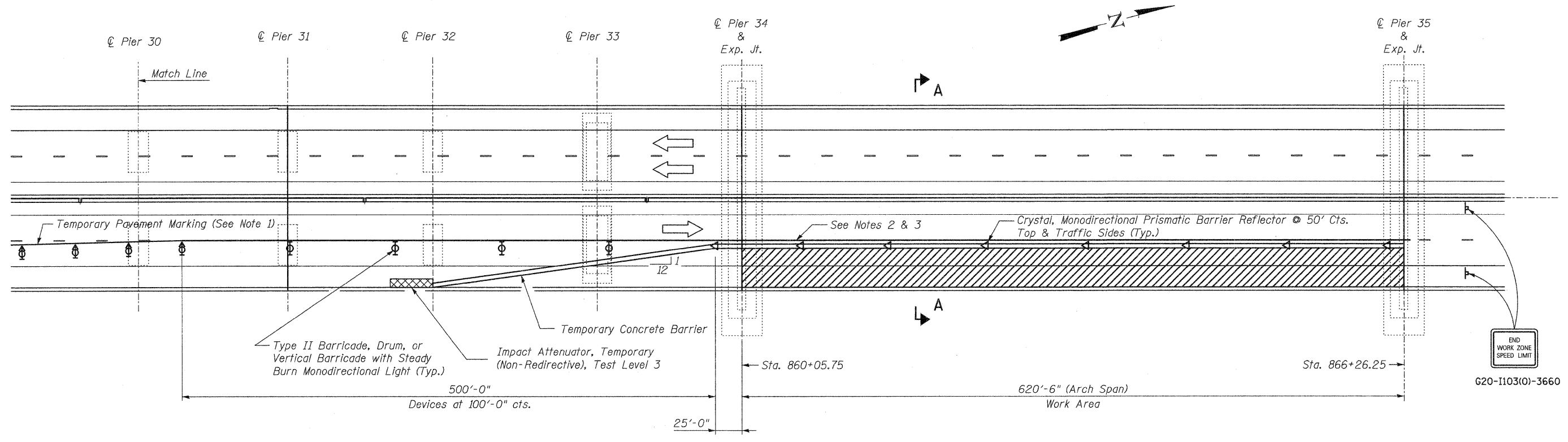


PART PLAN



PART PLAN

NOTES:

1. A White Temporary Pavement Marking-Line 4" shall be placed throughout the taper and up to the Temporary Concrete Barrier 25' ahead of the Work Area.
2. Remove existing Pavement Markings from start of Lane Closure Taper to the end of the Work Area to avoid conflict with Lane Closure Taper and Temporary Pavement Markings during construction. Paid for as Pavement Marking Removal.
3. See Sheet 6 for Pavement/Barrier Marking Line placement. Removal of the Pavement/Barrier Marking Line shall be paid for as Work Zone Pavement Marking Removal. White Polyurea Pavement Marking Type I-Line 6" shall be placed to match the original skip-dash conditions prior to removal.
4. Traffic Control Devices shall be according to Standard 701901.
5. Work this Sheet with Sheets 5 and 6.

benesch
 engineers · scientists · planners
 Alfred Benesch & Company
 205 North Michigan Avenue, Suite 2400
 Chicago, Illinois 60601
 312-565-0450 Job No. 3938.05

FILE NAME =	USER NAME = rgr1mm	DESIGNED - HMA	REVISED -	STATE OF ILLINOIS DEPARTMENT OF TRANSPORTATION	STANDARD 701402 (SPECIAL) STAGE I			F.A.I. RTE. 39	SECTION [(50-4B)BRJI]	COUNTY LASALLE	TOTAL SHEETS 12	SHEET NO. 3
#FILE#	PLOT SCALE =	DRAWN - HMA	REVISED -		SCALE: 1" = 50'	SHEET NO. 1 OF 1 SHEETS	STA. TO STA.	CONTRACT NO. 66A34				
	PLOT DATE = 11/10/2010	CHECKED - KJN	REVISED -		FED. ROAD DIST. NO. ILLINOIS FED. AID PROJECT							
		DATE - 11/10/2010	REVISED -									

... \plans\0366A34-sht-staging\dgn
 15:38:19
 11/10/2010