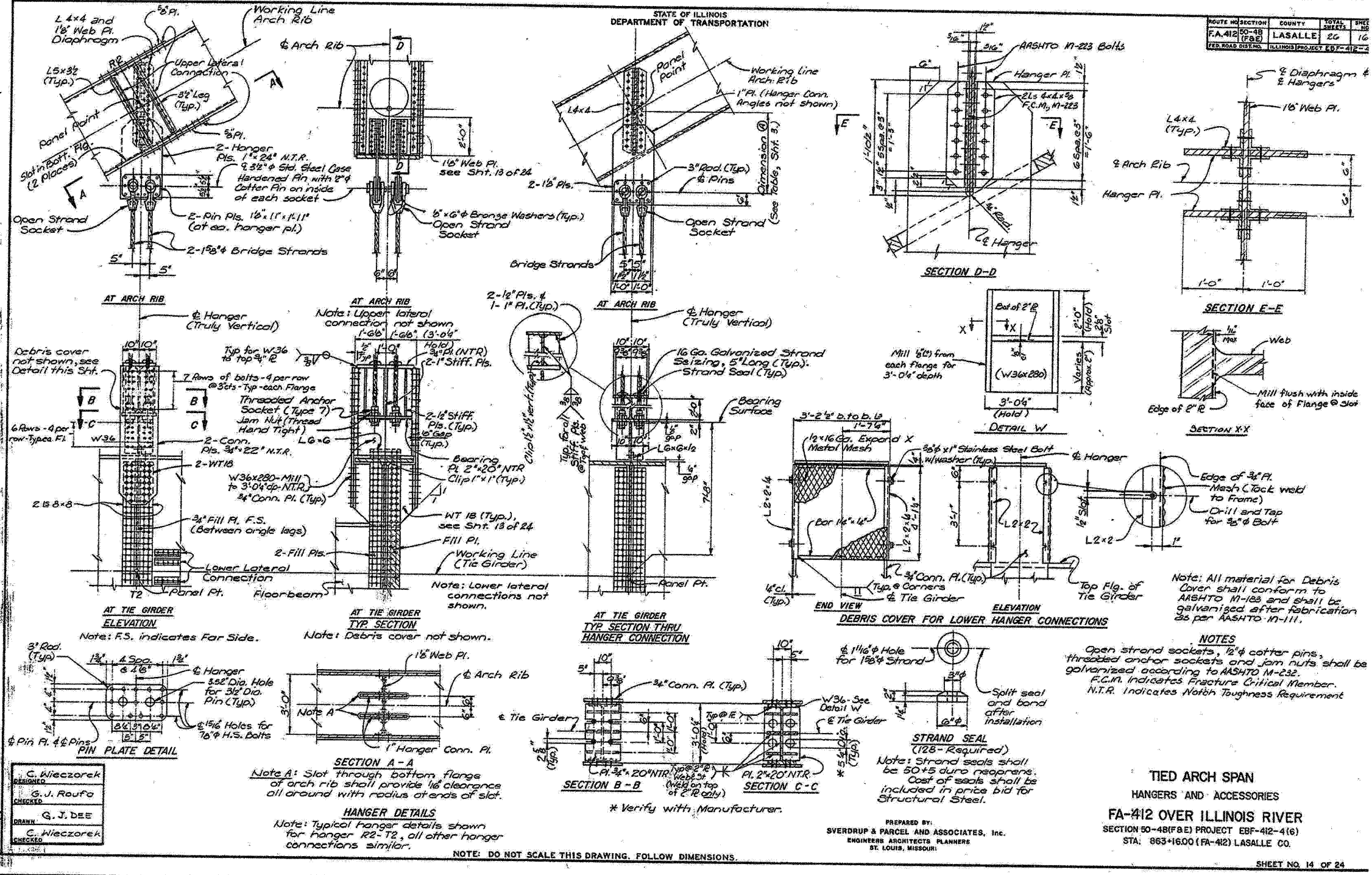


STATE OF ILLINOIS
DEPARTMENT OF TRANSPORTATION

ROUTE NO. SECTION	COUNTY	TOTAL SHEETS	SHEET NO.
FA-412 50-48 (F&E)	LASALLE	26	16
FED. ROAD DIST. NO.	ILLINOIS PROJECT EBF-412-2		



FOR INFORMATION ONLY

benesch
engineers · scientists · planners
Alfred Benesch & Company
205 North Michigan Avenue, Suite 2400
Chicago, Illinois 60601
312-565-0450 Job No. 3938.05

SHEET NO. S6	F.A.I. RTE. 39	SECTION [(50-48)BRJI]	COUNTY LASALLE	TOTAL SHEETS 12	SHEET NO. 12
SHEETS S6	CONTRACT NO. 66A34			FED. ROAD DIST. NO. ILLINOIS FED. AID PROJECT	

EXISTING TIED ARCH HANGER DETAILS
ABRAHAM LINCOLN MEMORIAL BRIDGE OVER
THE ILLINOIS RIVER (PUBLIC WATERS)

... \N0500191-66A34-006-existarchhanger.s.dgn

15:05:24

I:\NO.200