

F.A.S. RTE.	SECTION	COUNTY	TOTAL SHEETS	SHEET NO.
1324	(38-BR)	IROQUOIS	6	1
FED. ROAD DIST. NO.	ILLINOIS	CONTRACT NO. 66A70		

STATE OF ILLINOIS
DEPARTMENT OF TRANSPORTATION
DIVISION OF HIGHWAYS

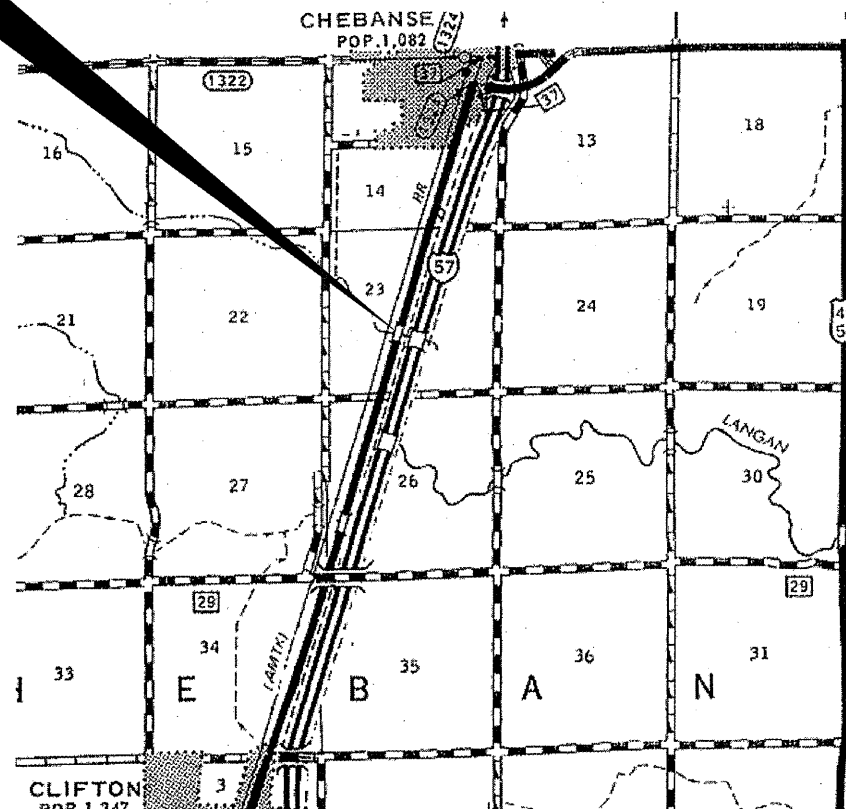
**PROPOSED
HIGHWAY PLANS**

FAS ROUTE 1324 (OLD US 45)
SECTION (38-BR)

PPC DECK BEAM SUPPORT
AT S.N. 038-0184 CARRYING FAS ROUTE 1324 (OLD US 45)
OVER A TRIBUTARY OF LANGAN CREEK
APPROXIMATELY 1.2 MILES SOUTH OF CHEBANSE
IROQUOIS COUNTY

PROJECT LOCATION
S.N. 038-0184

C-93-012-11



LOCATION MAP

NOT TO SCALE
POINT LOCATION

INDEX OF SHEETS

- COVER SHEET
- GENERAL NOTES
- SUMMARY OF QUANTITIES
- TYPICAL SECTION
- GENERAL PLAN AND ELEVATION
- P.P.C. DECK BEAM SUPPORT DETAILS

STANDARDS

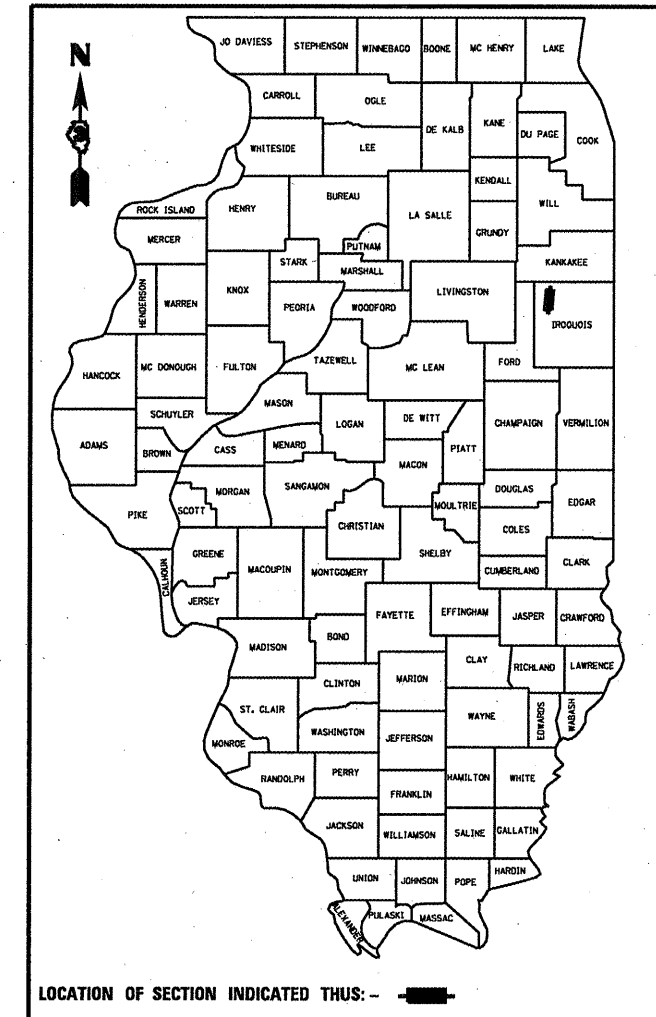
- | | |
|-----------|--|
| 001006 | DECIMAL OF AN INCH AND OF A FOOT |
| 701001-02 | OFF-ROAD OPERATIONS 2L, 2W, MORE THAN 4.5 m (15') AWAY |
| 701006-03 | OFF-ROAD OPERATIONS 2L, 2W, 4.5 m (15') TO 600 mm (24") FROM PAVEMENT EDGE |
| 701201-04 | LANE CLOSURE, 2L, 2W, DAY ONLY, FOR SPEEDS \geq 45 MPH |
| 701301-04 | LANE CLOSURE, 2L, 2W, SHORT TIME OPERATIONS |
| 701901-01 | TRAFFIC CONTROL DEVICES |

MICROFILMED _____
REEL NUMBER _____
AWARDED _____
RESIDENT ENGINEER _____
AS BUILT CHANGES WERE MADE
ON THE FOLLOWING SHEETS _____

J.U.L.I.E.
JOINT UTILITY LOCATION INFORMATION FOR EXCAVATION
1-800-892-0123

PROJECT ENGINEER : JOE KANNEL
UNIT CHIEF : RON WOODSHANK
TOWNSHIP : CHEBANSE

CONTRACT NO. 66A70



LOCATION OF SECTION INDICATED THUS: -

FUNCTIONAL CLASSIFICATION

RURAL - MAJOR COLLECTOR
FAS 1324 (OLD US 45)
2008 ADT = 2950

STATE OF ILLINOIS
DEPARTMENT OF TRANSPORTATION
DIVISION OF HIGHWAYS

SUBMITTED December 21, 2010
Heaven F. Lippert
DEPUTY DIRECTOR OF HIGHWAYS, REGION ENGINEER
Feb 4, 2011
Scott E. Stitt P.E.
ENGINEER OF DESIGN AND ENVIRONMENT
Feb 9, 2011
Christine M. Lead
DIRECTOR OF HIGHWAYS, CHIEF ENGINEER

PRINTED BY THE AUTHORITY
OF THE STATE OF ILLINOIS

GENERAL NOTES

PLAN DIMENSIONS AND DETAILS RELATIVE TO EXISTING PLANS ARE SUBJECT TO ROUTINE VARIATIONS. THE CONTRACTOR SHALL FIELD VERIFY EXISTING DIMENSIONS AND DETAILS AFFECTING NEW CONSTRUCTION AND MAKE NECESSARY APPROVED ADJUSTMENTS PRIOR TO CONSTRUCTION OR ORDERING OF MATERIALS. SUCH VARIATIONS SHALL NOT BE CAUSE FOR ADDITIONAL COMPENSATION FOR A CHANGE IN THE SCOPE OF THE WORK. HOWEVER, THE CONTRACTOR WILL BE PAID FOR THE QUANTITY FURNISHED BASED UPON THE UNIT BID PRICE FOR THE WORK.

FOR STABILIZATION, ALL TYPE III BARRICADES SHALL REQUIRE A MINIMUM OF FOUR SAND BAGS PER BARRICADE.

ANY REFERENCE TO A STANDARD IN THESE PLANS SHALL BE INTERPRETED TO MEAN THE EDITION AS INDICATED BY THE SUBNUMBER LISTED ON THE INDEX OF SHEETS OR THE COPY OF THE STANDARD INCLUDED IN THESE PLANS.

COMMITMENTS

NONE: DATE 10/28/2010

DATE: 12-21-10

PREPARED BY: Dave Brovick (w)
DISTRICT STUDIES & PLANS ENGINEER

EXAMINED BY: Herbert Jung (w)
DISTRICT CONSTRUCTION ENGINEER

Ray J. Kelly
DISTRICT MATERIALS ENGINEER

James A. Huelsh
DISTRICT OPERATIONS ENGINEER

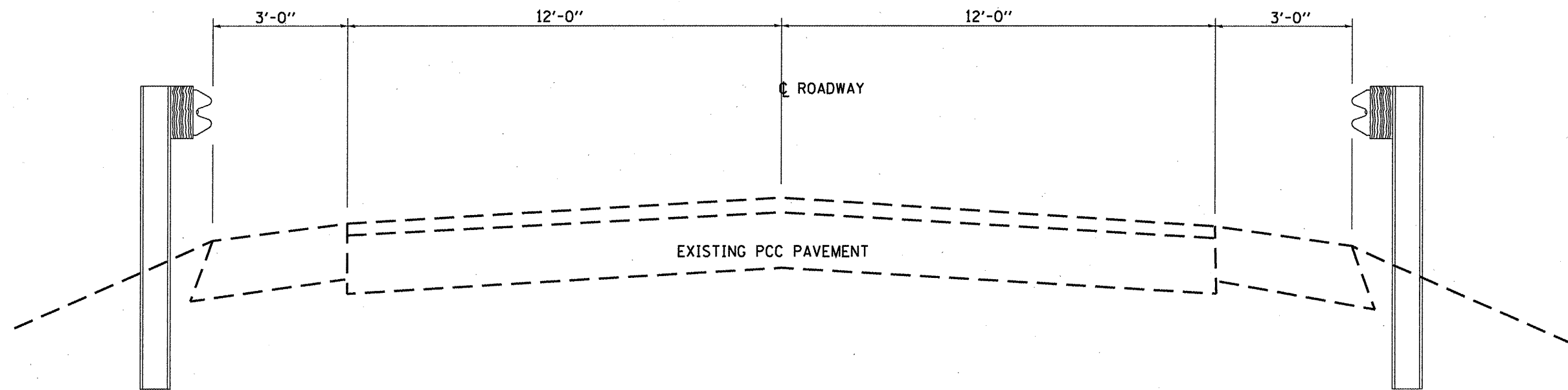
FILE NAME =	USER NAME = woodshankr1	DESIGNED - RON WOODSHANK	REVISED - ---	STATE OF ILLINOIS DEPARTMENT OF TRANSPORTATION	GENERAL NOTES	F.A.S. RTE.	SECTION	COUNTY	TOTAL SHEETS	SHEET NO.	
c:\ps_work\pwt\dot\woodshankr1\d240480	366A78-details.dgn	DRAWN - RON WOODSHANK	REVISED - ---			1324	(38-BR)	ILLINOIS	6	2	
PLOT SCALE = 100.0000' / IN.	CHECKED - ---	REVISER - ---	REVISER - ---			CONTRACT NO. 66A70					
PLOT DATE = Oct 28, 2010 - 12:55:32 PM	DATE - ---	REVISER - ---	REVISER - ---			SCALE: _____	SHEET NO. 1 OF 1 SHEETS	STA. _____ TO STA. _____	FED. ROAD DIST. NO. - [ILLINOIS]		

SUMMARY OF QUANTITIES

CONSTRUCTION CODE TYPE: 0014

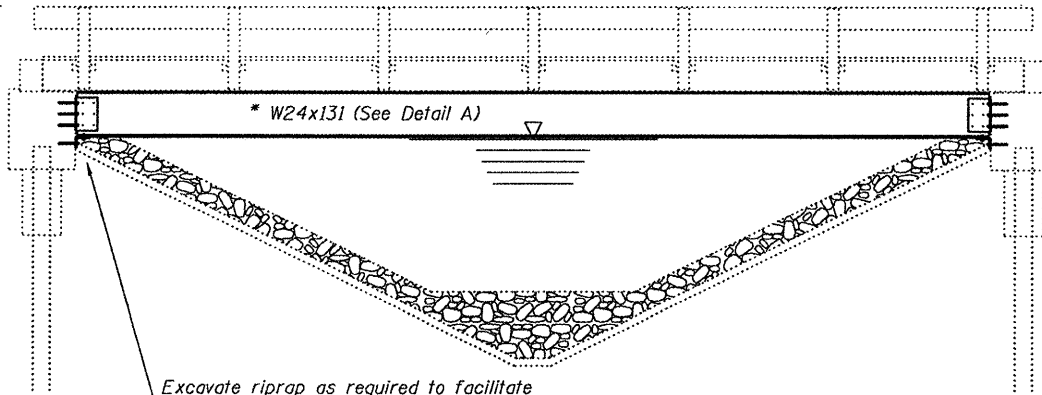
RURAL
100% STATE
TOTAL
QUANTITY

CODE NO.	ITEM	UNIT	RURAL 100% STATE TOTAL QUANTITY
50500405	FURNISHING AND ERECTING STRUCTURAL STEEL	POUND	23630
67100100	MOBILIZATION	L SUM	1
70100450	TRAFFIC CONTROL AND PROTECTION, STANDARD 701201	L SUM	1



FILE NAME = ca:\pw_work\p1\pw\woodshenkr1\d0240480\366A70-details.dgn	USER NAME = woodshenkr1	DESIGNED - RON WOODSHANK	REVISED - ---	STATE OF ILLINOIS DEPARTMENT OF TRANSPORTATION	TYPICAL SECTION	F.A.S. RTE.	SECTION	COUNTY	TOTAL SHEETS	SHEET NO.
	PLOT SCALE = 1/8" = 1' IN.	DRAWN - RON WOODSHANK	REVISED - ---			623	(38-BR)	IRROUOIS	6	4
	PLOT DATE = Oct 28, 2010 12:55:54 PM	CHECKED - ---	REVISED - ---			CONTRACT NO. 66A70				
	DATE - ---	REVISED - ---	FED. ROAD DIST. NO. ILLINOIS							
		SCALE: _____ SHEET NO. 1 OF 1 SHEETS STA. _____ TO STA. _____								

* Contractor is to verify beam length prior to ordering material. Other sections meeting the section modulus requirements shown may be allowed subject to approval by the Bureau of Bridges and Structures. Maximum Girder depth = 24". No additional payment will be allowed if the contractor chooses a heavier steel section than the one specified in the plans. (Min Sx = 329 in³)

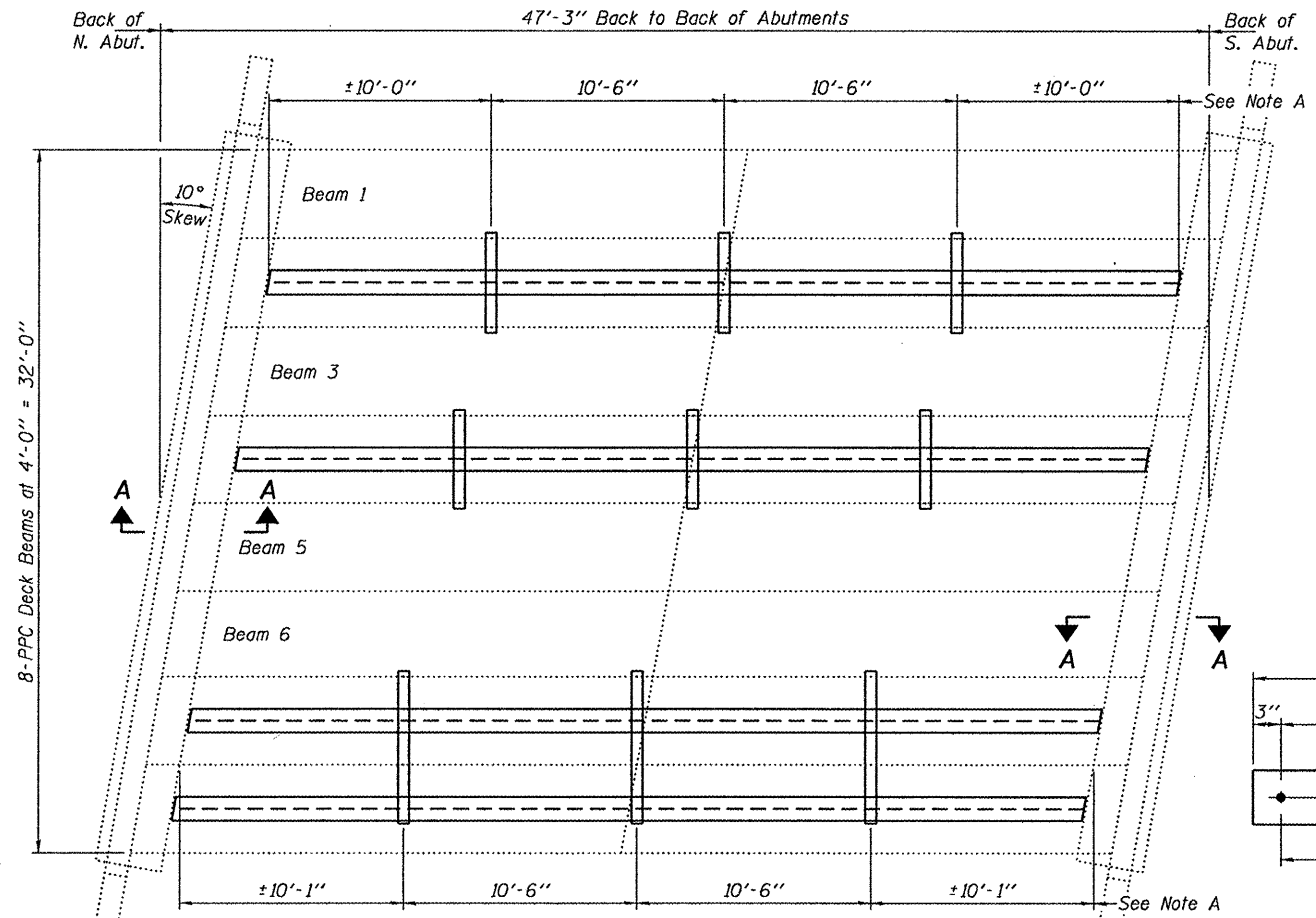
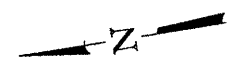


Excavate riprap as required to facilitate installation of W24x131 Support Beam. Cost included with Furnishing & Erecting Structural Steel. (Typical at each abutment.)

Note A:
 ☉ Transverse Tie R's (3 per span). Place additional shims at midpoints between Tie R's. Securely weld shims to top flange of support beam. Minimum shim size is 6" x flange width.

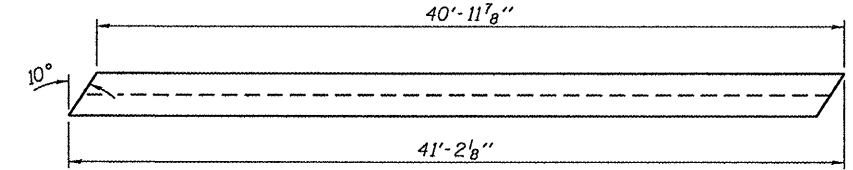
GENERAL NOTES

All structural steel shall conform to AASHTO Classification M-270 Gr. 36, unless otherwise noted.
 Plan dimensions and details relative to existing plans are subject to nominal construction variations. The Contractor shall field verify existing dimensions and details affecting new construction and make necessary approved adjustments prior to construction or ordering of materials. Such variations shall not be cause for additional compensation for a change in scope of the work, however, the Contractor will be paid for the quantity actually furnished at the unit price bid for the work.
 The Contractor is advised that the existing PPC Deck Beams are in a deteriorated condition with reduced load carrying capacity. It is the contractor's responsibility to account for the condition of the beams when developing construction procedures.
 See Section 584 of the Standard Specifications for Epoxy Grouting of Threaded Rods; Minimum embedment 9".
 If the contractor's procedure for placement of beams involves placement of cranes or other heavy equipment on the bridge, a detailed procedure shall be submitted to the Engineer for approval. The procedure shall include calculations, prepared and sealed by an Illinois Licensed Structural Engineer, verifying that the equipment and procedure used will not overstress the existing beams. To distribute load to multiple beams and protect the existing surface, in all cases a double layer mat of heavy timbers shall be used at all times under crane tracks or wheels and any outriggers in the down position. If necessary, shims shall be used under the crane mat to ensure uniform contact with the underlying beams.
 The cost of epoxy grouting threaded rods on the pier cap, abutments and beams shall be included with Furnishing and Erecting Structural Steel.
 The Contractor has the option of using used steel. See Special Provisions.



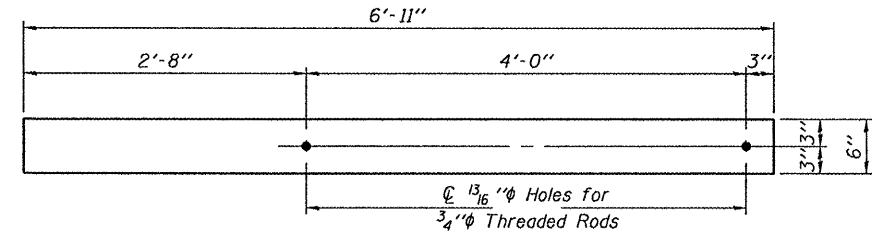
PLAN

Place W24x131 Bracing Beams under Existing Deck Beams 2, 4, 7 & 8



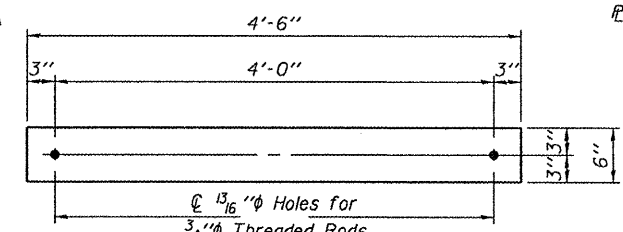
DETAIL A

W24x131 x 41'-2 1/8" (4 Req'd)



TRANSVERSE TIE R B

R 1/2" x 6'-11" x 6" (3 Req'd)



TRANSVERSE TIE R A

R 1/2" x 4'-6" x 6" (6 Req'd)

TOTAL BILL OF MATERIAL

ITEM	UNIT	QUANTITY
Furnishing and Erecting Structural Steel	Pound	23,630



DESIGNED: <i>M. G. G.</i>	EXAMINED: <i>Jay F. Schuff</i>	DATE: JANUARY 27, 2011
CHECKED: <i>Kyle M. Steffen</i>	PASSED: <i>David Carl Puzey</i>	
DRAWN: <i>Kyle M. Steffen</i>		
CHECKED: <i>FL</i>		

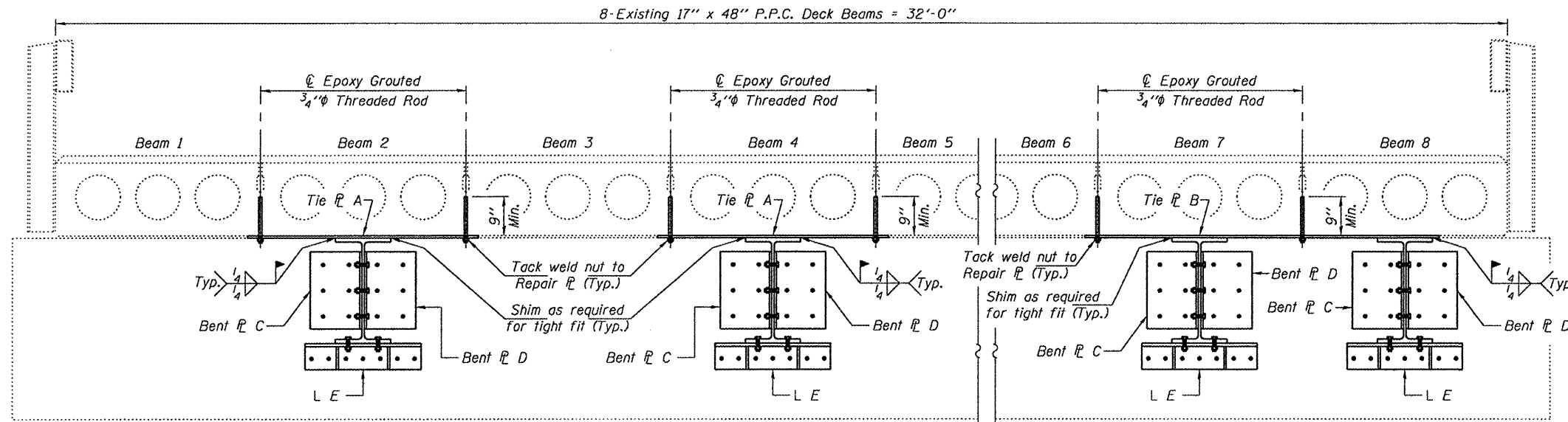
STATE OF ILLINOIS
 DEPARTMENT OF TRANSPORTATION

GENERAL PLAN & ELEVATION
 SN 038-0184

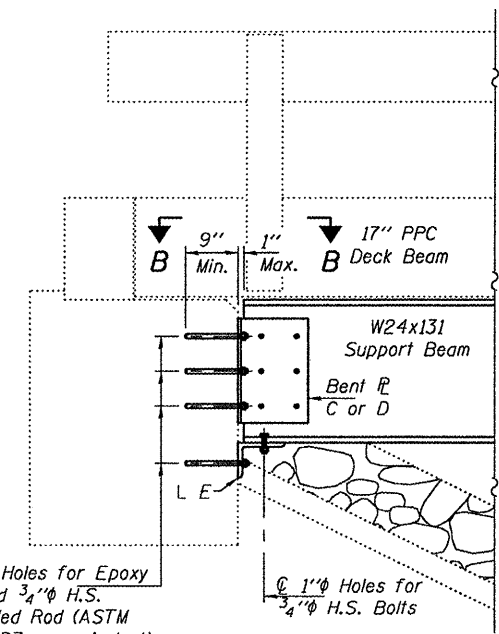
SHEET NO. 1 OF 2 SHEETS

F.A.S. RTE. 1324	SECTION 138-BR1	COUNTY IROQUOIS	TOTAL SHEETS 6	SHEET NO. 5
			CONTRACT NO. 66A70	
ILLINOIS FED. AID PROJECT				

OLD U.S. ROUTE 45
 OVER LANGAN CREEK



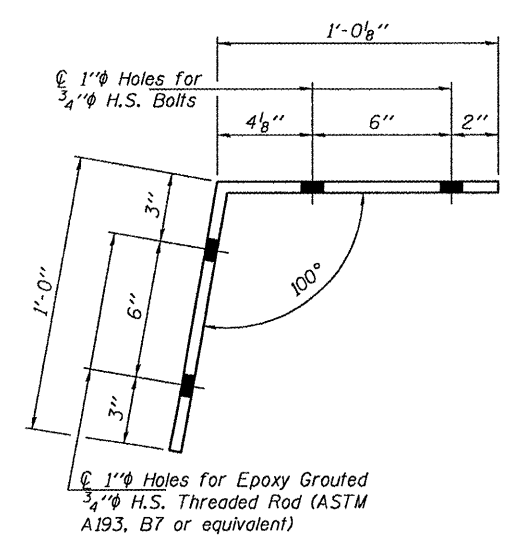
CROSS-SECTION
(Looking South)



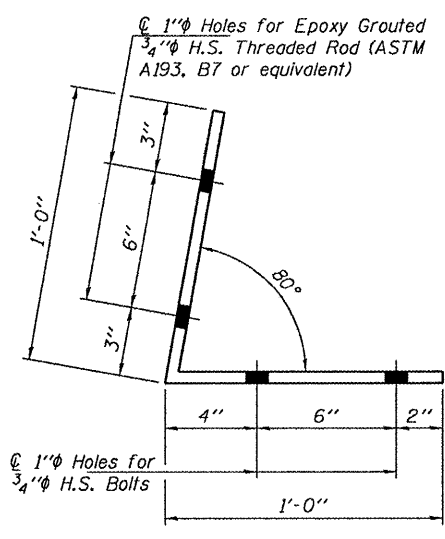
1" Holes for Epoxy Grouted 3/4" H.S. Threaded Rod (ASTM A193, B7 or equivalent)

SECTION A-A

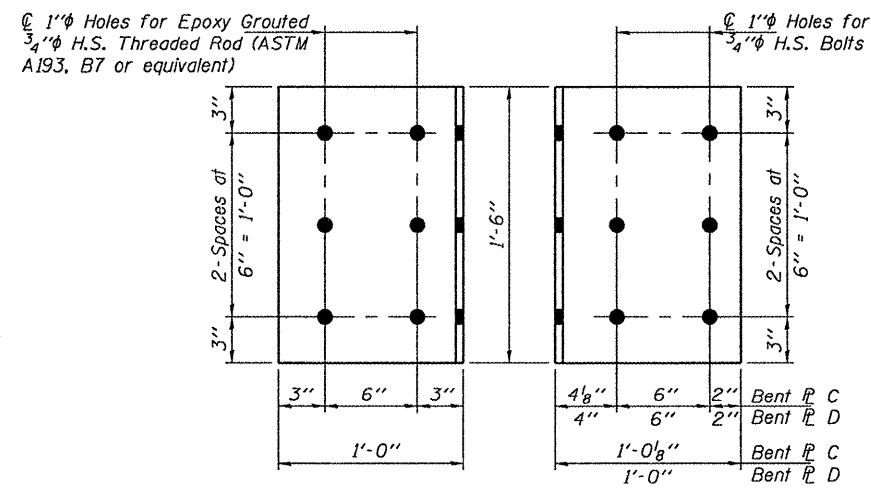
Excavate riprap as required to facilitate installation of W24x131 Support Beam. Cost included with Furnishing & Erecting Structural Steel.



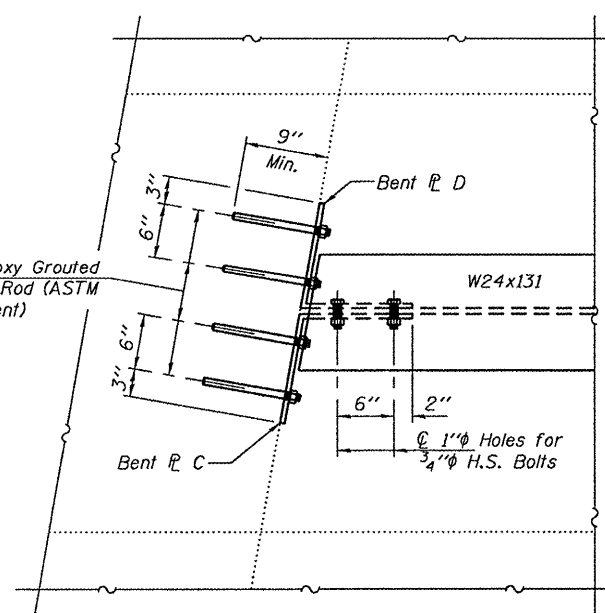
BENT PLATE C
1/2" x 1'-6" x 2'-0 1/8"
(8 Required)



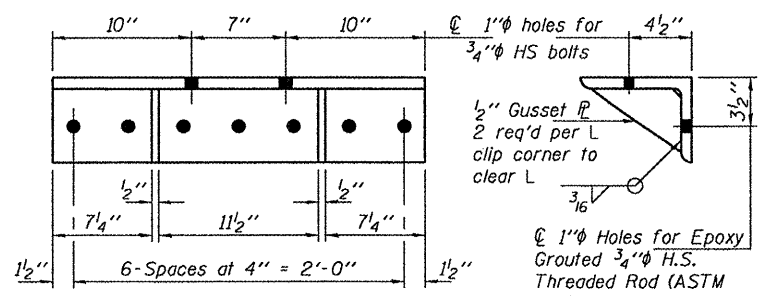
BENT PLATE D
1/2" x 1'-6" x 2'-0"
(8 Required)



TYPICAL BENT PLATE ELEVATIONS



SECTION B-B



ANGLE E
L 8 x 6 x 3/4 x 2'-3"
(8 Required)

SECTION THRU L E

**OLD U.S. ROUTE 45
OVER LANGAN CREEK**

DESIGNED - GGE	EXAMINED - <i>Jaime F. Joffe</i>	DATE - JANUARY 27, 2011
CHECKED - IJL	PASSED - <i>Kyle M. Steffen</i>	
DRAWN - Kyle M. Steffen	ACTING ENGINEER OF BRIDGES AND STRUCTURES	
CHECKED - GGE IJL		

**STATE OF ILLINOIS
DEPARTMENT OF TRANSPORTATION**

**P.P.C. DECK BEAM SUPPORT DETAILS
SN 038-0184**

SHEET NO. 2 OF 2 SHEETS

F.A.S. RTE. 1324	SECTION (38-BR1)	COUNTY IROQUOIS	TOTAL SHEETS 6	SHEET NO. 6
			CONTRACT NO. 66A70	
ILLINOIS FED. AID PROJECT				