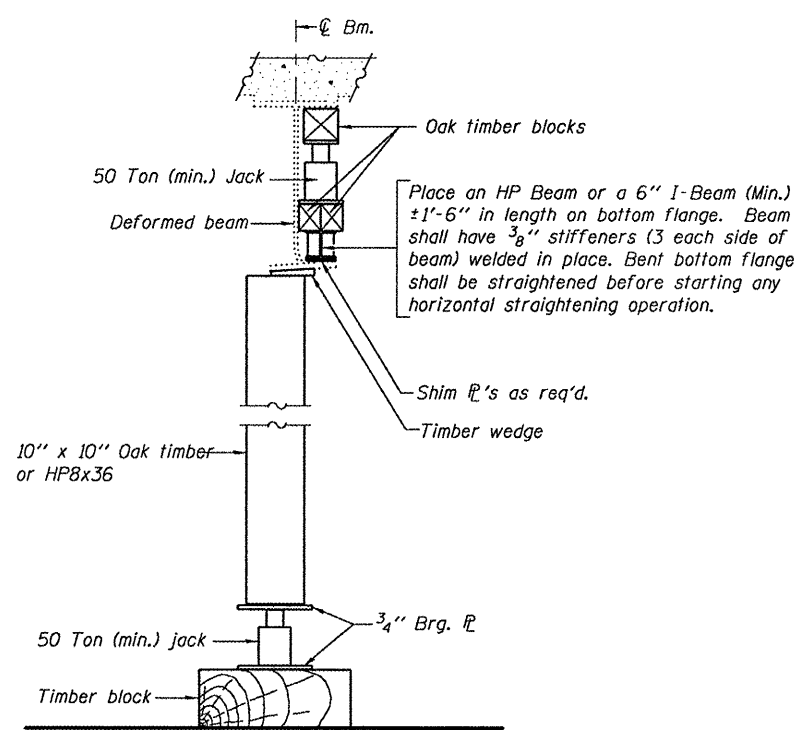
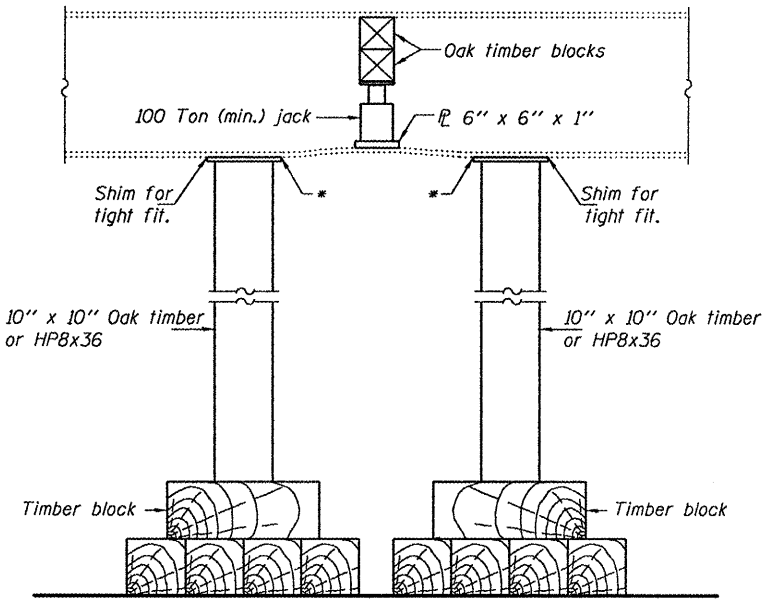


PARTIAL PLANS
SUGGESTED BEAM STRAIGHTENING METHODS
 Straightening force shall be maintained on all load transfer blocking during beam straightening.

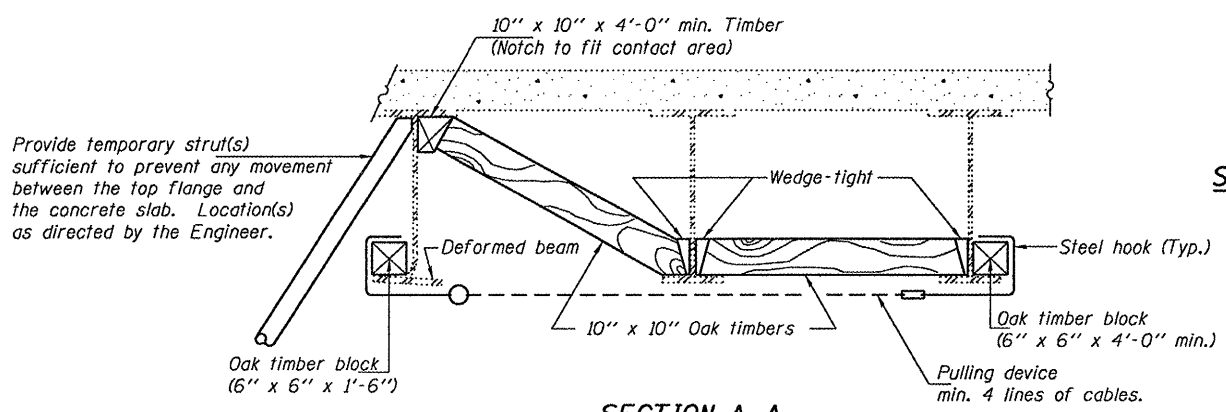


SUGGESTED VERTICAL STRAIGHTENING DETAIL
 (To correct flange rotation.)

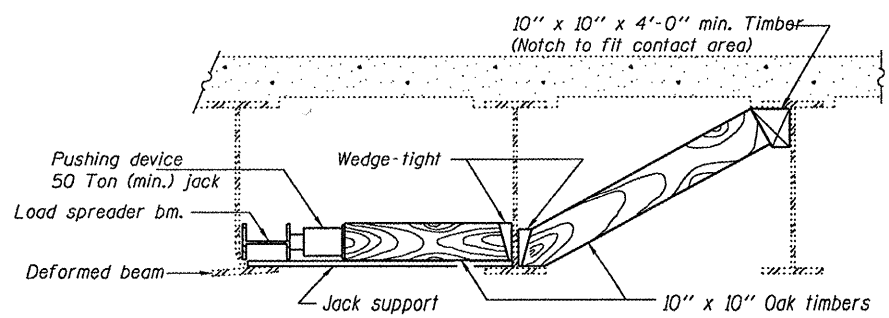


SUGGESTED VERTICAL STRAIGHTENING DETAIL
 (To correct localized vertical flange deformations.)

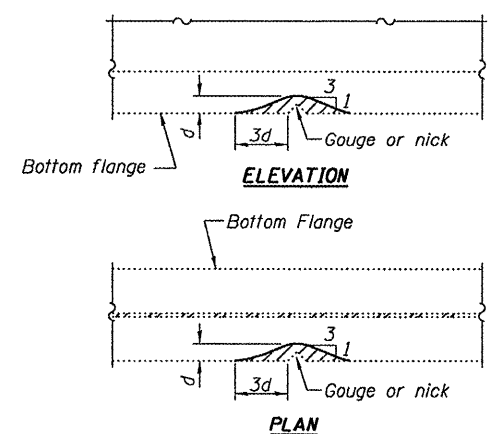
* Edge of plate shall line up with edge of deformation.
 Note:
 Braces and jack assembly shall be placed on same side of web.
 Bent bottom flange shall be straightened before starting any horizontal straightening operations.



SECTION A-A



SECTION B-B



GRINDING DETAIL

Grind existing nicks, gouges and shallow cracks in the damaged beams as detailed. Ground surfaces shall be inspected for cracks using magnetic particle testing prior to initiating any beam straightening operations. Any cracks that cannot be removed by grinding approximately 1/4\"/>

LOCATION	X	Y
Bm. 1 Sp. 2	3/4"	4/16"
Bm. 3 Sp. 2	3/16"	1/4"
Bm. 3 Sp. 3	5/16"	1/2"

EXISTING DEFORMATION TO BE STRAIGHTENED
 (Looking)
 (Approximate max. deflections)
 Deflected length of beam to be straightened is approximately .

REP-11-14-2005

DESIGNED - IJL	EXAMINED - <i>Joane F. J...</i>	DATE - JANUARY 27, 2011
CHECKED - GGE	PASSED - <i>Joane F. J...</i>	
DRAWN - Kyle M. Steffen	ACTING ENGINEER OF BRIDGES AND STRUCTURES	
CHECKED - IJL GGE		

STATE OF ILLINOIS
DEPARTMENT OF TRANSPORTATION

BEAM STRAIGHTENING DETAILS
SN 048-0065

SHEET NO. 2 OF 6 SHEETS

F.A.P. RTE. 29	SECTION (21-HB-211-5)	COUNTY KNOX	TOTAL SHEETS 14	SHEET NO. 10
CONTRACT NO. 68A08				
ILLINOIS FED. AID PROJECT				