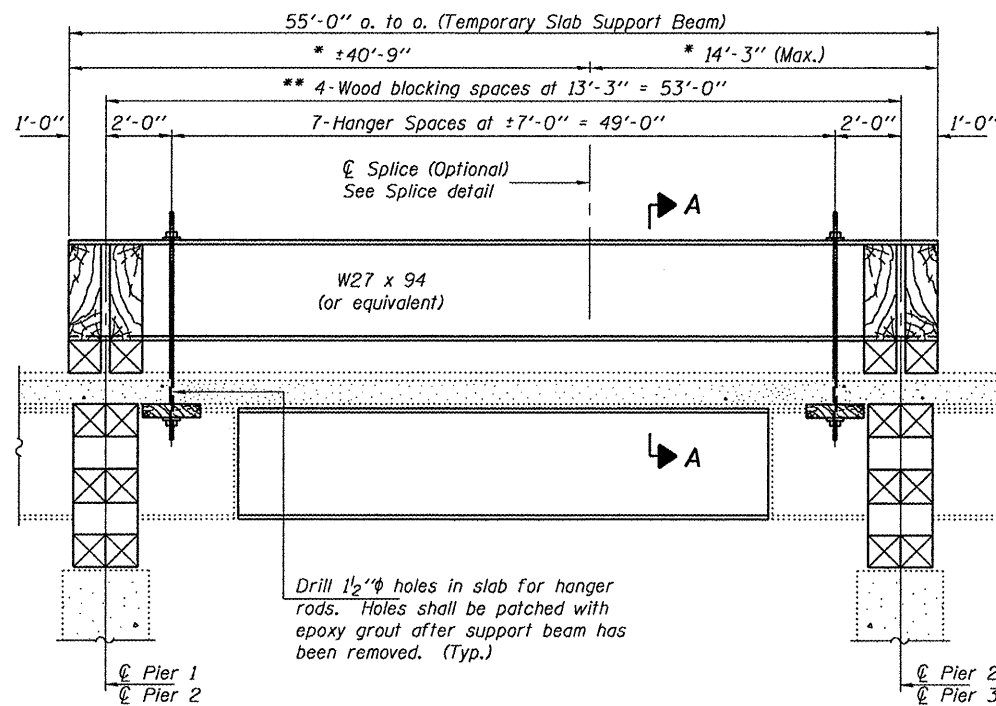


SECTION A-A AWAY FROM SIDEWALK

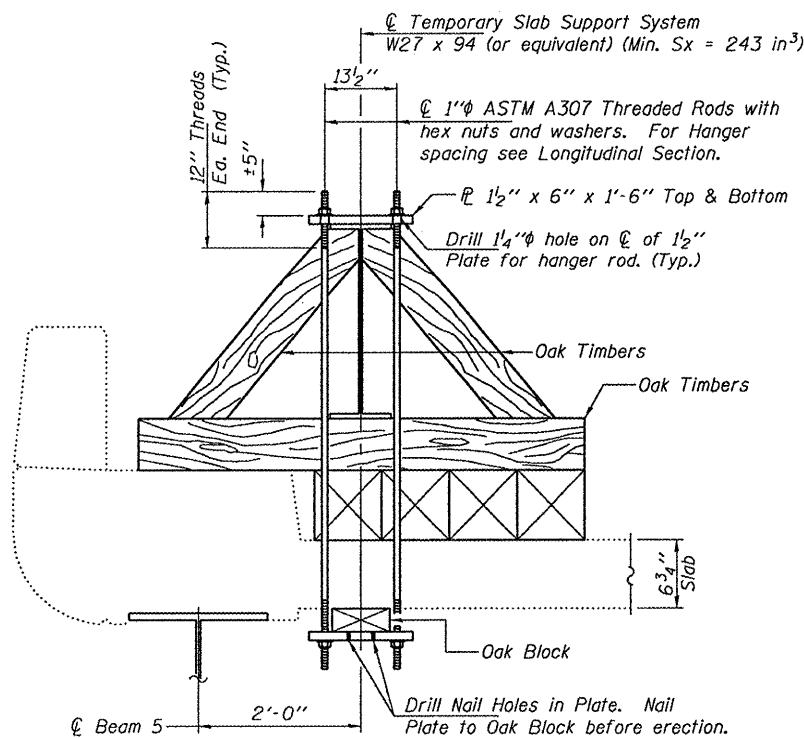


LONGITUDINAL SECTION  
SUGGESTED TEMPORARY SLAB SUPPORT SYSTEM

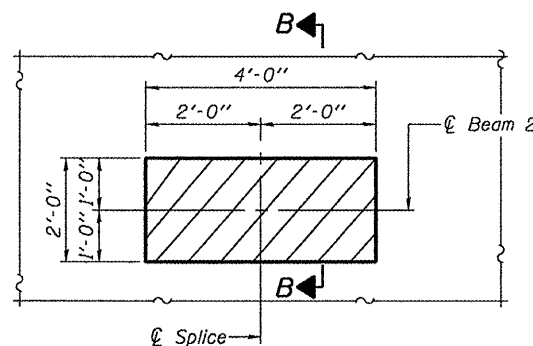
Notes:  
Hatched areas indicate concrete sections to be removed and replaced. Perimeters of Concrete Removal areas shall be saw cut 3/4" prior to the removal of concrete.  
Existing reinforcement extending into the removed area shall be cleaned, straightened and incorporated into the new construction. Any reinforcement bars that are damaged during concrete removal shall be replaced with an approved bar splicer or anchorage system. Cost included with Concrete Removal.  
Reinforcement shall be cut only if required for fitting bolts. Cut reinforcement shall be spliced as directed by the Engineer. Cost included with Concrete Removal.

\* These dimensions may vary for available beams in stock.

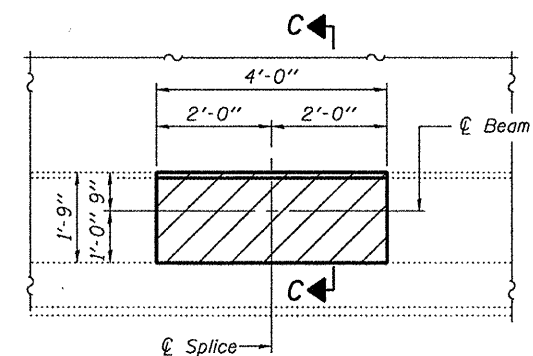
\*\* Wood blocking between supports to be placed after support beam deflects under its own weight.



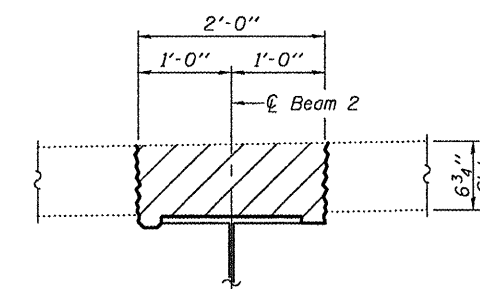
SECTION A-A NEAR SIDEWALK



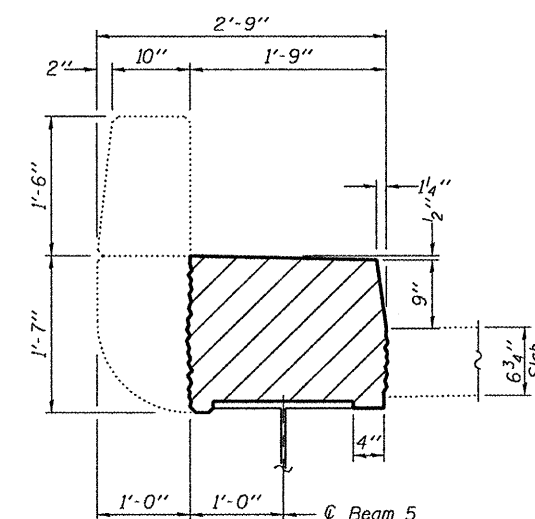
TYPICAL CONCRETE REMOVAL  
AWAY FROM SIDEWALK



TYPICAL CONCRETE REMOVAL  
NEAR SIDEWALK



SECTION B-B



SECTION C-C

DESIGNED - IJL  
CHECKED - GGE  
DRAWN - Kyle M. Steffen  
CHECKED - IJL GGE

EXAMINED  
PASSED  
ACTING ENGINEER OF STRUCTURAL SERVICES  
ACTING ENGINEER OF BRIDGES AND STRUCTURES

DATE - JANUARY 27, 2011

STATE OF ILLINOIS  
DEPARTMENT OF TRANSPORTATION

TEMPORARY SLAB SUPPORT SYSTEM & CONCRETE REMOVAL DETAILS  
SN 048-0065

F.A.P. RTE. 29	SECTION (21-HB-211-5)	COUNTY KNOX	TOTAL SHEETS 14	SHEET NO. 11
ILLINOIS FED. AID PROJECT			CONTRACT NO. 68A08	

SHEET NO. 3 OF 6 SHEETS