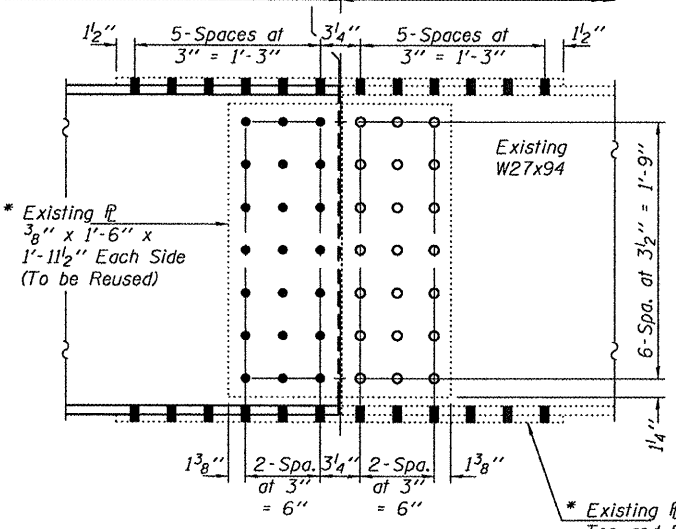
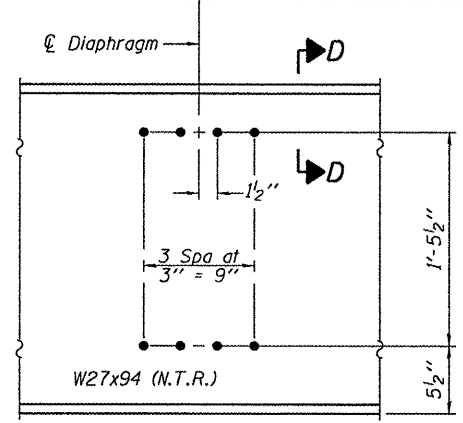
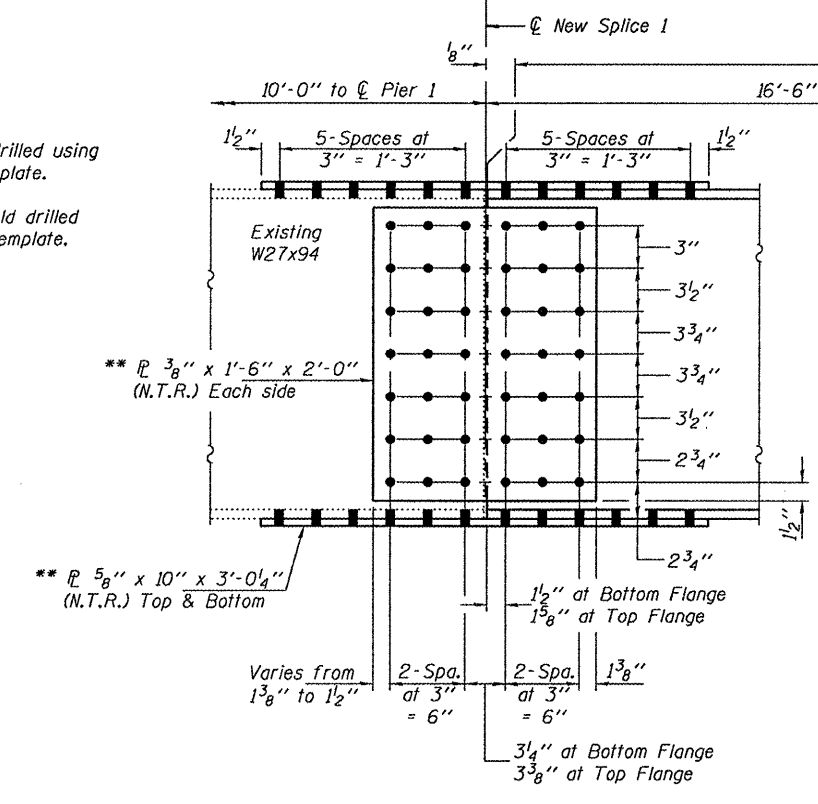
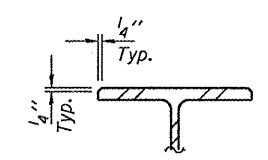


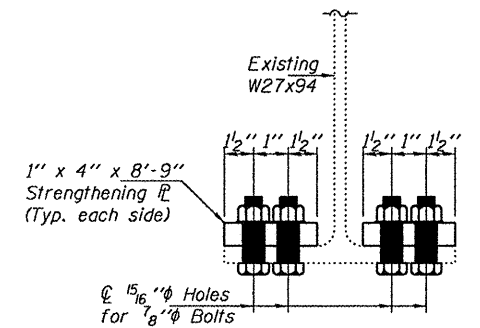
* Holes in new beam shall be field drilled using the existing splice plates as a template.
 ** Holes in existing beam shall be field drilled using the new splice plates as a template.



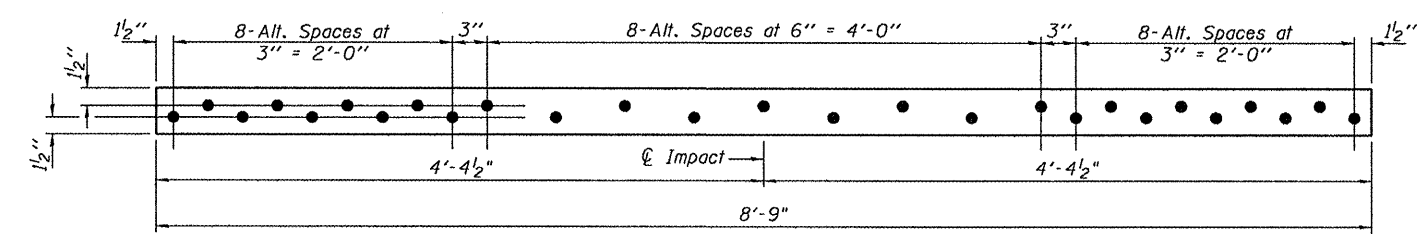
ELEVATION BEAM 5 SPAN 2



SECTION D-D



STRENGTHENING DETAIL



STRENGTHENING PLATE
 PL 1" x 4" x 8'-9" (2 Required)

DESIGNED - IJL	EXAMINED - <i>Joey F. Jaffe</i>	DATE - JANUARY 27, 2011	STATE OF ILLINOIS DEPARTMENT OF TRANSPORTATION	BEAM DETAILS FOR BEAM 5, SPAN 2 & STRENGTHENING DETAILS SN 048-0065		F.A.P. RTE. 29	SECTION (21-HB-211-5)	COUNTY KNOX	TOTAL SHEETS 14	SHEET NO. 12	
CHECKED - GGE	ACTING ENGINEER OF STRUCTURAL SERVICES			SHEET NO. 4 OF 6 SHEETS		CONTRACT NO. 68A08					
DRAWN - Kyle M. Steffen	PASSED - <i>Carl Perry</i>			ILLINOIS FED. AID PROJECT							
CHECKED - IJL	GGE			ILLINOIS FED. AID PROJECT							
				ILLINOIS FED. AID PROJECT							