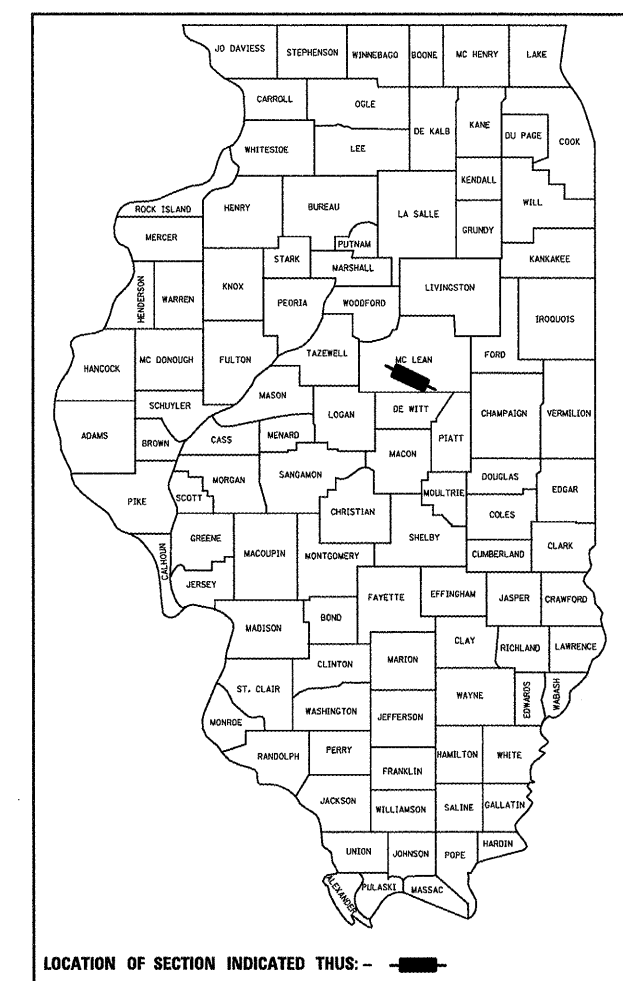


F.A.I. RTE.	SECTION	COUNTY	TOTAL SHEETS	SHEET NO.
74	(57-20(1),21,22)RS-3	MCLEAN	150	1
		ILLINOIS	CONTRACT NO. 70550	

* 150+1 = 151

D-95-065-06



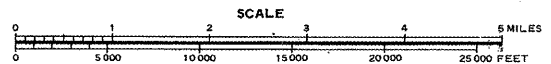
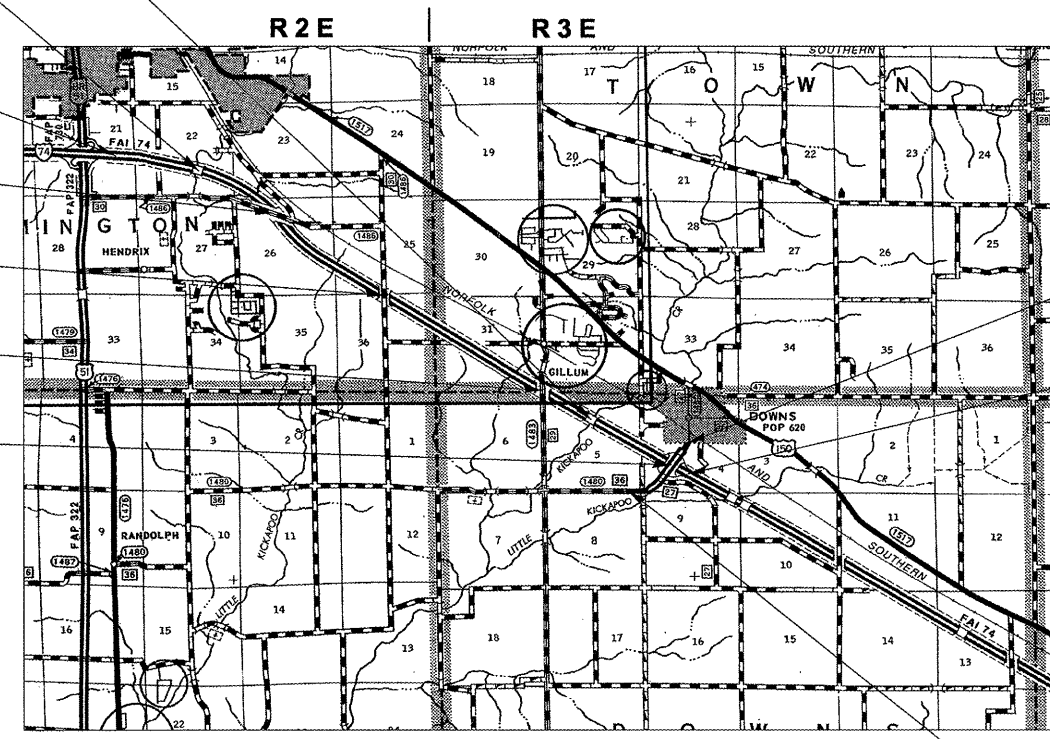
LOCATION OF SECTION INDICATED THUS: - [arrow pointing to McLean County]

STATE OF ILLINOIS
DEPARTMENT OF TRANSPORTATION
DIVISION OF HIGHWAYS
**PROPOSED
HIGHWAY PLANS**

F.A.I. ROUTE 74 (I-74)
SECTION (57-20(1),21,22)RS-3
PROJECT IM-074-5(162)136
RESURFACING (INT-3RD), PATCHING,
DRAINAGE, GUARDRAIL, IMPACT ATTENUATORS
MCLEAN COUNTY

C-95-065-06

E OF US 51 TO CH 36 AT DOWNS



GROSS LENGTH = 37,400.00 FT. = 7.083 MILE
NET LENGTH = 36,929.08 FT. = 6.994 MILE

FOR INDEX OF SHEETS, SEE SHEET NO. 2
FOR SUMMARY OF QUANTITIES SEE SHEET NO. 7 THROUGH 13

CURRENT TRAFFIC DATA
ADT = 18,000 (2009) 22,700 (2019)
20 YR ADT = 27,000
P.U. & P.C. % = 52.9
S.U. % = 6.6
M.U. % = 40.5

DESIGN DESIGNATION
N/A

BRIDGE OMISSION
S.N. 057-0126 WB
STA. 1037+74.25 TO STA. 1040+25.75
& S.N. 057-0125 EB
STA. 1037+74.25 TO STA. 1040+25.25

BRIDGE OMISSION
S.N. 057-0121 WB & S.N. 057-0120 EB
STA. 779+38.47 TO STA. 781+58.39

F.A.I. 74 SECTION BEGINS:
STA. 737+00.00

OVERHEAD
S.N. 057-0122
STA. 833+08.50

OVERHEAD
S.N. 057-0123
STA. 908+01.98

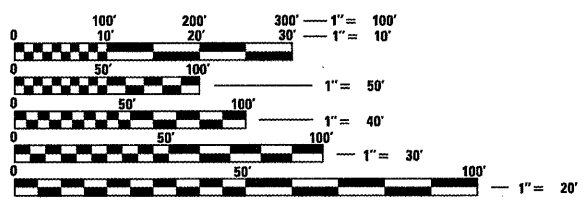
OVERHEAD
S.N. 057-0124
STA. 1008+08.36

OVERHEAD
S.N. 057-0127
STA. 1090+44.29

C.H. 36 SECTION ENDS:
STA. 69+50.00

F.A.I. 74 SECTION ENDS:
STA. 1111+00.00

C.H. 36 SECTION BEGINS:
STA. 16+92.44



FULL SIZE PLANS HAVE BEEN PREPARED USING STANDARD ENGINEERING SCALES. REDUCED SIZED PLANS WILL NOT CONFORM TO STANDARD SCALES. IN MAKING MEASUREMENTS ON REDUCED PLANS, THE ABOVE SCALES MAY BE USED.

J.U.L.I.E.
JOINT UTILITY LOCATION INFORMATION FOR EXCAVATION
1-800-892-0123 (BLOOMINGTON, OLD TOWN & DOWNS TOWNSHIPS)
OR 811

PROJECT ENGINEER: NANCY FASIG
SQUAD LEADER: BRIAN J. HOGAN
DESIGNER: BILLY J. MURPHY
(217)-465-4181

CONTRACT NO. 70550

STATE OF ILLINOIS
DEPARTMENT OF TRANSPORTATION
DIVISION OF HIGHWAYS
SUBMITTED 10/21/2010
Joseph E. Coore (KAC)
DEPUTY DIRECTOR OF HIGHWAYS, REGION ENGINEER
Dec 10 2010
Scott E. Stitt P.E.
acting ENGINEER OF DESIGN AND ENVIRONMENT
Dec 10 2010
Christine M. Reed
DIRECTOR OF HIGHWAYS, CHIEF ENGINEER

PRINTED BY THE AUTHORITY
OF THE STATE OF ILLINOIS