

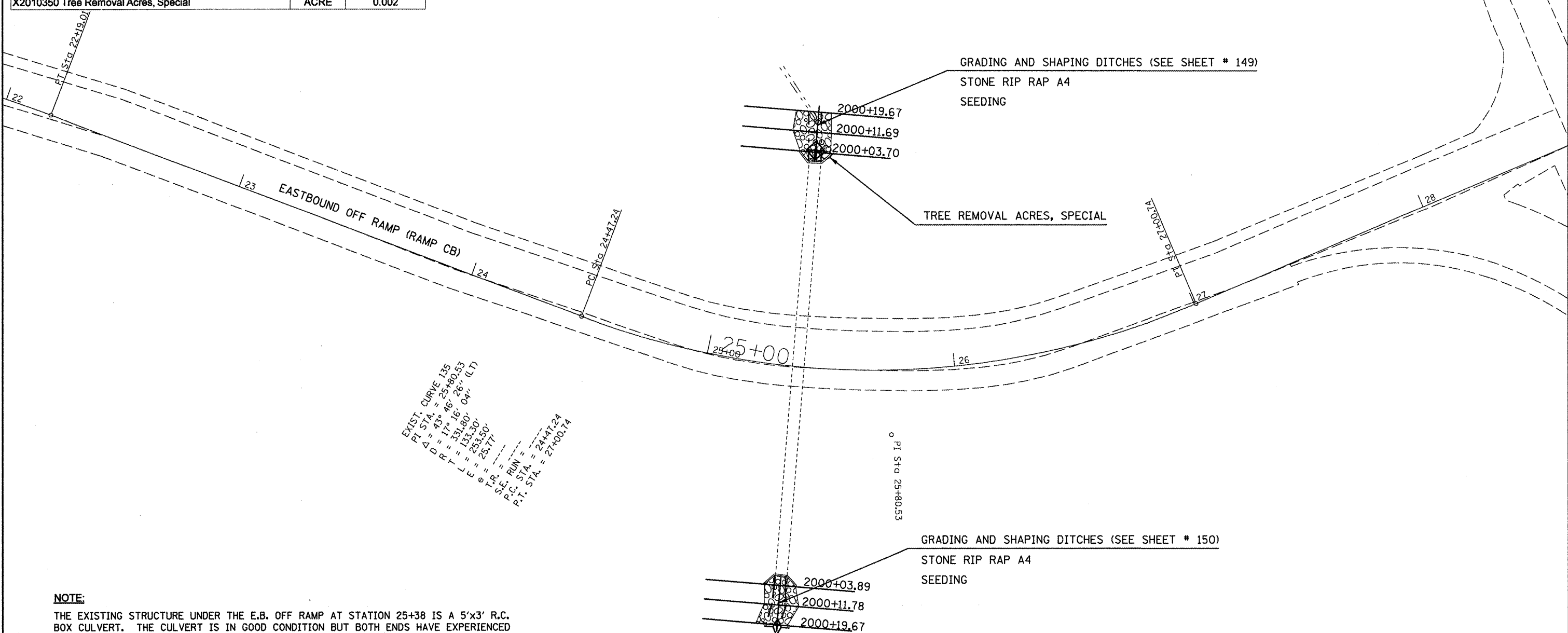
LOC. #22 STA. 25+38 EB OFF-RAMP "CB"

DRAINAGE STRUCTURE IMPROVEMENT DETAIL

LOCATION #22 STA. 25 + 38

EASTBOUND OFF RAMP (RAMP CB)

ITEM# AND DESCRIPTION	UNIT	QUANTITY
21400100 Grading and Shaping Ditches	FOOT	42
25000210 Seeding, Class 2A	ACRE	0.001
25000400 Nitrogen Fert. Nutr.	POUND	0.09
25000500 Phosphorous Fert. Nutr.	POUND	0.09
25000600 Potassium Fert. Nutr.	POUND	0.09
25100115 Mulch Method 2	ACRE	0.001
28000250 Temp. Eros. Contr. Seeding	POUND	0.1
28000305 Ditch Check Temporary	FOOT	15
28000500 Inlet and Pipe Protection	EACH	1
28100107 Stone Rip Rap Class A4	SQ YD	60.7
28200200 Filter Fabric	SQ YD	60.7
X2010350 Tree Removal Acres, Special	ACRE	0.002



EXIST. CURVE 135
 PI STA. = 25+80.53
 $\Delta = 43^\circ 46' 26''$ (LT)
 $R = 17' 46' 26''$ (LT)
 $P.T. = 331+80'$
 $L = 133+30'$
 $E = 283+50'$
 $\theta = 25.77'$

 S.E. RUN =
 P.C. STA. = 24+17.24
 P.T. STA. = 27+00.74

NOTE:
 THE EXISTING STRUCTURE UNDER THE E.B. OFF RAMP AT STATION 25+38 IS A 5'x3' R.C. BOX CULVERT. THE CULVERT IS IN GOOD CONDITION BUT BOTH ENDS HAVE EXPERIENCED APPROXIMATELY 1 FT. OF SCOUR. THE UPSTREAM WINGWALLS HAVE HAD SOME SLOPE FAILURE BEHIND THEM AS A RESULT OF THE SCOUR. ALSO, THERE IS A TREE GROWING AT THE UPSTREAM END IN FRONT OF THE WING.
 THE RECOMMENDED SCOPE OF WORK IS TO GRADE AND SHAPE THE CHANNEL UPSTREAM AND DOWNSTREAM OF THE STRUCTURE TO ACCEPT A TREATMENT OF RIPRAP. ALSO, THE TREE SHALL BE REMOVED FROM THE UPSTREAM END.

FILE NAME =	USER NAME = hoganbj	DESIGNED - BJM	REVISED -
cd:\p_w\work\p_w\dot\hoganbj\d0158340\057850-sh-t-sm_struct_det.dgn		DRAWN -	REVISED -
PLOT SCALE = 48.0000' / IN.		CHECKED -	REVISED -
PLOT DATE = 10/21/2010		DATE - 09/23/10	REVISED -

STATE OF ILLINOIS
DEPARTMENT OF TRANSPORTATION

DRAINAGE STRUCTURE IMPROVEMENT DETAIL			
LOCATION #22 STA. 25 + 38			
SCALE: 1" = 20'	SHEET NO. OF SHEETS	STA.	TO STA.

F.A.I. RTE.	SECTION	COUNTY	TOTAL SHEETS	SHEET NO.
74	(57-20(1),21,22)RS-3	McLean	150	72
CONTRACT NO. 70550			ILLINOIS FED. AID PROJECT	