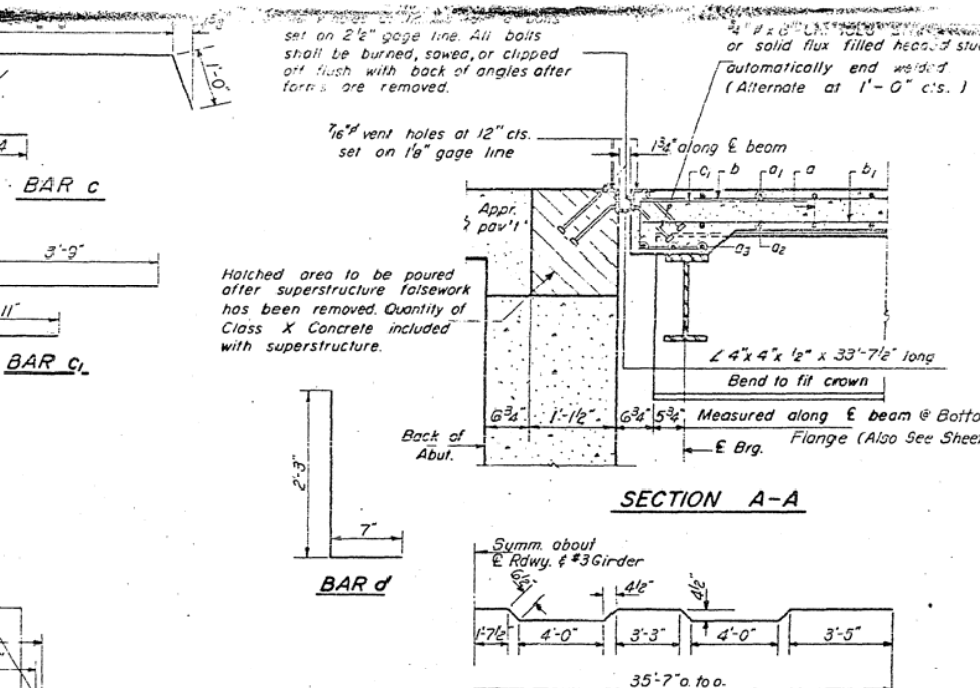
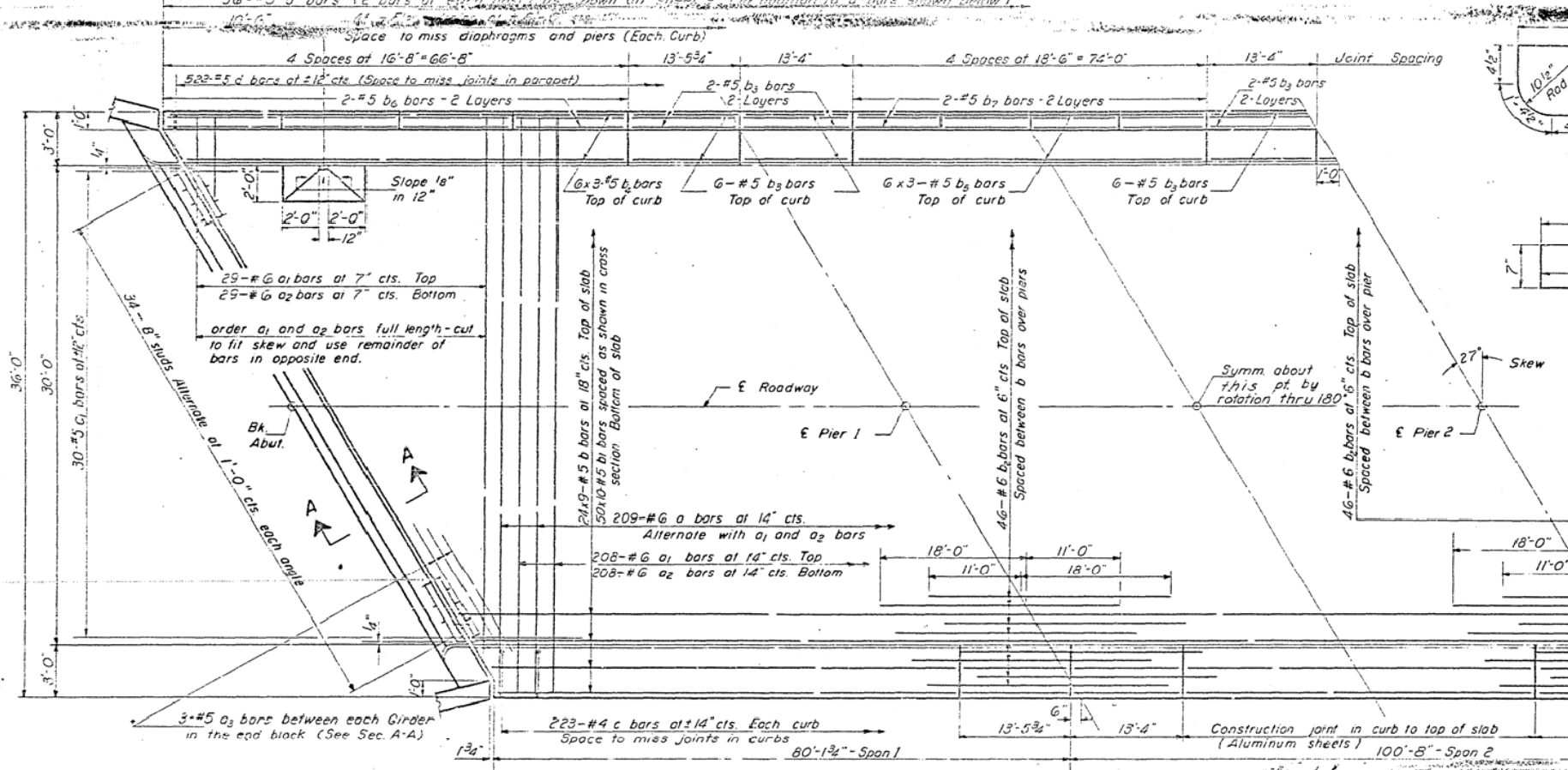


AS-BUILT PLANS FOR INFORMATION ONLY

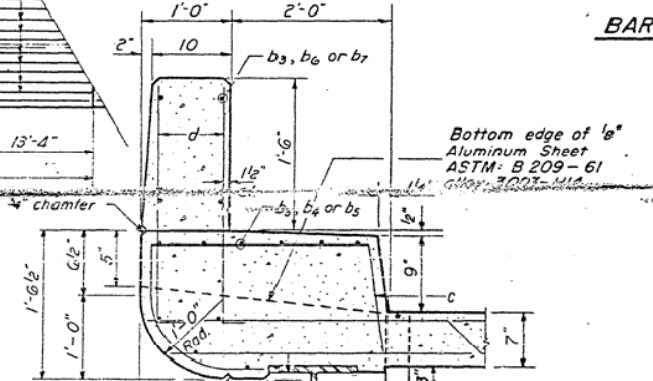
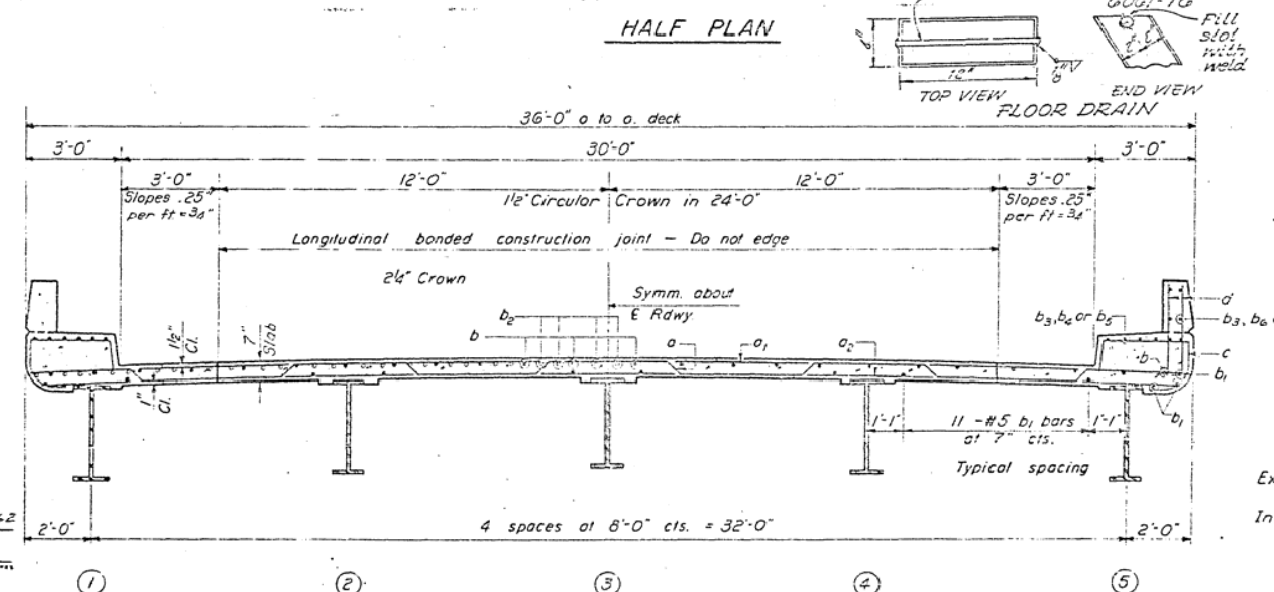
STATE OF ILLINOIS
DEPARTMENT OF PUBLIC WORKS & BUILDINGS
DIVISION OF HIGHWAYS

ROUTE NO.	SECTION	COUNTY	TOTAL SHEETS	SHEET NO.	SHEET NO. 4
134	101 BR	EDGAR	31	9	14 SHEETS
FED. ROAD DIST. NO. 1 ILLINOIS FED. AID PROJECT					

Note:
Bars indicated thus 20x3-#5 etc. indicates 20 lines of bars with 3 lengths per line.
Min bar laps = 20 dia.



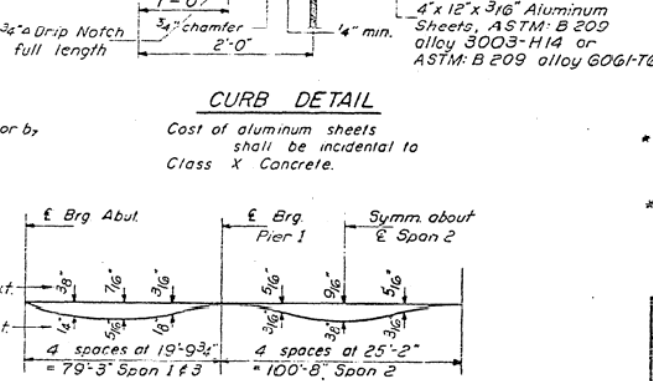
To determine "f": After all structural steel has been erected, elevations of the top flanges of the beams shall be taken at intervals shown on sheet 5. These elevations subtracted from the "Grade Elevations Adjusted for Dead Load Deflections" shown on sheet 5, minus slab thickness, equals the fillet heights "f" above top of beams.



BILL OF MATERIAL

Bar	No.	Size	Length	Shape
a	209	#6	36'-11"	
a1	237	#6	35'-0"	
a2	237	#6	35'-0"	
a3	24	#5	6'-8"	
b	216	#5	30'-0"	
b1	500	#5	27'-3"	
b2	92	#6	29'-0"	
b3	80	#5	13'-1"	
b4	72	#5	23'-3"	
b5	36	#5	25'-6"	
b6	64	#5	16'-5"	
b7	32	#5	18'-3"	
c	446	#4	5'-9"	
d	60	#5	5'-3"	
d	1156	#5	2'-10"	
Reinforcement Bars				Lbs. 72,870
Structural Steel				Lbs. 280,360
Class X Concrete				Cu. Yds. 269.2

* Weight of bearing assemblies with lead plates and anchor bolts are included as structural steel.
Est. Weight = 14,200 Lbs.



SUPERSTRUCTURE

S.B.I. RT. 134 SEC. 101 B R
EDGAR COUNTY
STA. 121+28

DESIGNED	<i>[Signature]</i>	EXAMINED	<i>[Signature]</i>
CHECKED	<i>[Signature]</i>	PASSED	<i>[Signature]</i>
DRAWN	J.L. Armstrong/Banner	APPROVED	<i>[Signature]</i>
CHECKED	J.A.T.		

1/17/65 Changed Floor Drain detail JAW

FILE NAME =	USER NAME = carrollr	DESIGNED - GMS	REVISED -
ct:\pw\work\pilot\carrollr\td2122096\Bri	Bridge Repairs - 023-0013.dgn	DRAWN - GMS	REVISED -
	PLOT SCALE = 40.0000 / 1 IN.	CHECKED -	REVISED -
	PLOT DATE = 12/10/2010	DATE -	REVISED -

STATE OF ILLINOIS
DEPARTMENT OF TRANSPORTATION

AS-BUILT PLANS	
FOR INFORMATION ONLY	
SCALE:	TO STA.
SHEET NO. 9 OF 9 SHEETS	STA. TO STA.

F.A.P. RTE.	SECTION	COUNTY	TOTAL SHEETS	SHEET NO.
	101 BDR & CX-BJR	EDGAR	36	12
CONTRACT NO. 70873				
FED. ROAD DIST. NO. ILLINOIS FED. AID PROJECT				