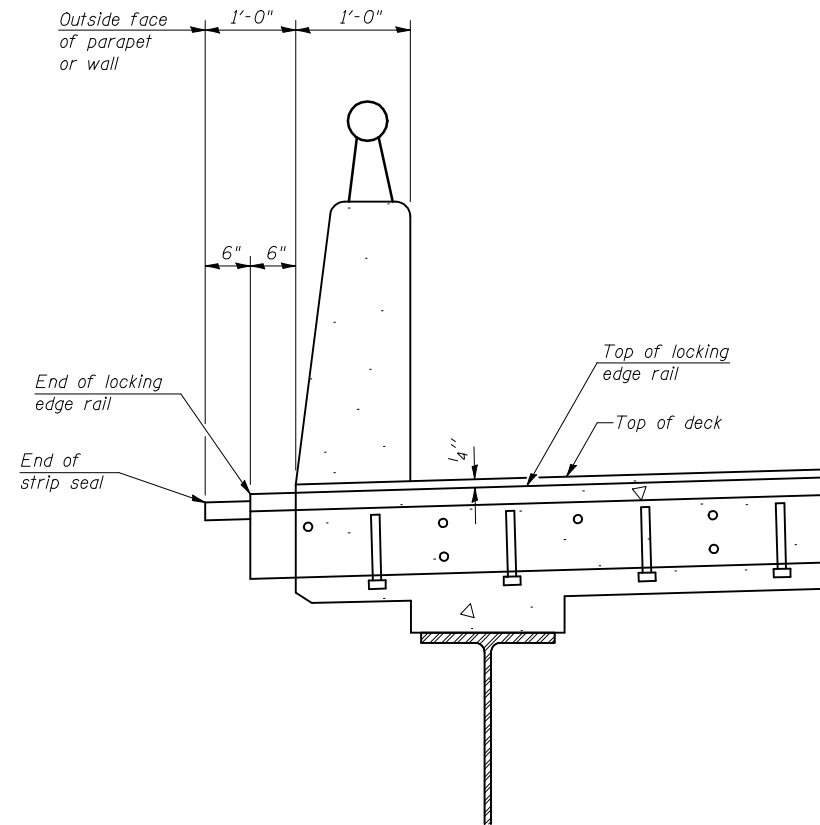
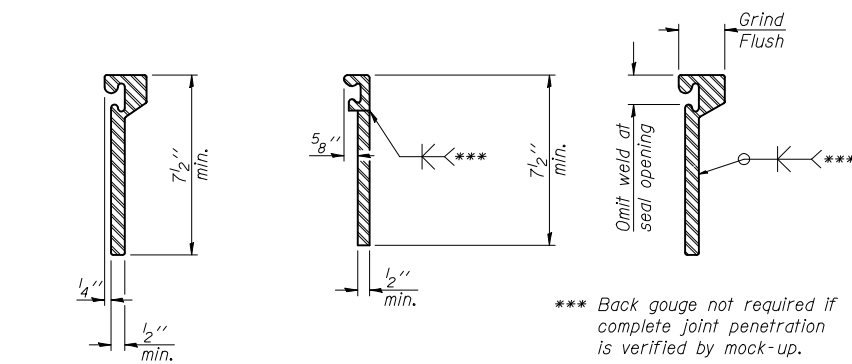


PREFORMED JOINT STRIP SEAL DETAILS

S.N. 023-0024



**SECTION AT PROPOSED JOINT
AT SOUTH ABUTMENT**

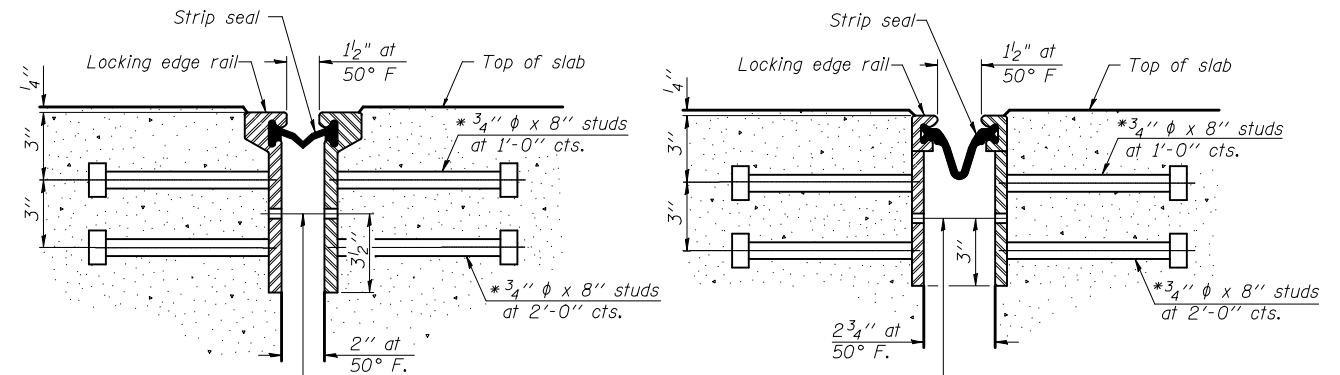


**ROLLED
EXTRUDED RAIL WELDED RAIL**

**LOCKING EDGE
RAIL SPLICE**

The inside of the locking edge rail groove shall be free of weld residue.
Rolled rail shown, welded rail similar.

LOCKING EDGE RAILS



**SECTION THRU
ROLLED RAIL JOINT**

**SECTION THRU
WELDED RAIL JOINT**

* Granular or solid flux filled headed studs conforming to Article 1006.32 of the Std. Specs., automatically end welded.

Notes:

The strip seal shall be made continuous and shall have a minimum thickness of 1/4". The configuration of the strip seal shall match the configuration of the Locking Edge Rails. Open or "webbed" strip seal gland configurations are not permitted. The gland shall be sized for a maximum rated movement of 4 inches.

The strip seal shall be inserted into the Locking Edge Rails before the parapet ends are formed and poured to allow for proper placement of the strip seal.

The Locking Edge Rails depicted are conceptual only, except for the minimum dimensions shown. The actual configuration of the Locking Edge Rails and matching strip seal may vary from manufacturer to manufacturer. Flanged edge rails will not be allowed. Locking Edge Rails may be spliced at slope discontinuities.

The manufacturer's recommended installation methods shall be followed.

The joint opening and deck dimensions detailed on the superstructure are based on a rolled rail expansion joint. If the Contractor elects to use the welded rail expansion joint, the opening and deck dimensions shall be modified according to the dimensions detailed on this sheet. Required modifications shall be made at no additional cost to the State.

All steel components shall be galvanized after fabrication according to Article 520.03 of the Standard Specifications. Maximum space between rail segments at stage lines shall be 3/16", sealed with a suitable sealant.

Parapet plates and anchorage studs for skews > 30° included in the cost of Preformed Joint Strip Seal.

BILL OF MATERIAL

Item	Unit	Total
Preformed Joint Strip Seal	Foot	68.0

FILE NAME =	USER NAME = carrollrt	DESIGNED R. Carroll	REVISED -
ct:\pw\work\puidot\carrollrt\d0212096\Bridg	Bridge Repairs - 023-0024.dgn	DRAWN R. Carroll	REVISED -
	PLOT SCALE = 40.0000' / IN.	CHECKED T. Brandenburg	REVISED -
	PLOT DATE = 12/10/2010	DATE 10/1/2010	REVISED -

**STATE OF ILLINOIS
DEPARTMENT OF TRANSPORTATION**

**PREFORMED JOINT STRIP SEAL DETAILS
S.N. 023-0024**

SCALE: SHEET NO. 7 OF 19 SHEETS STA. TO STA.

*332 & 91

F.A.P. RTE.	SECTION	COUNTY	TOTAL SHEETS	SHEET NO.
*	101 BDR & CX-BJR	EDGAR	36	19
CONTRACT NO. 70873				
ILLINOIS FED. AID PROJECT				