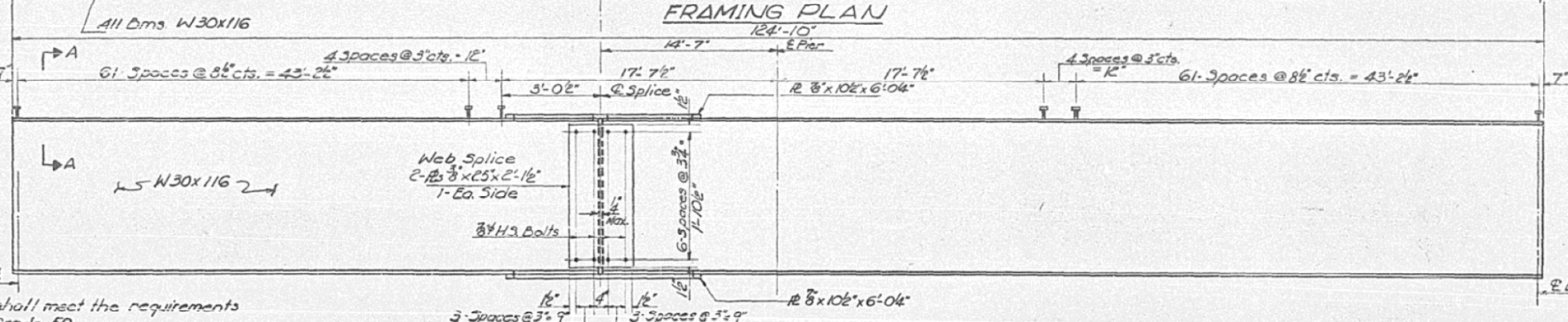
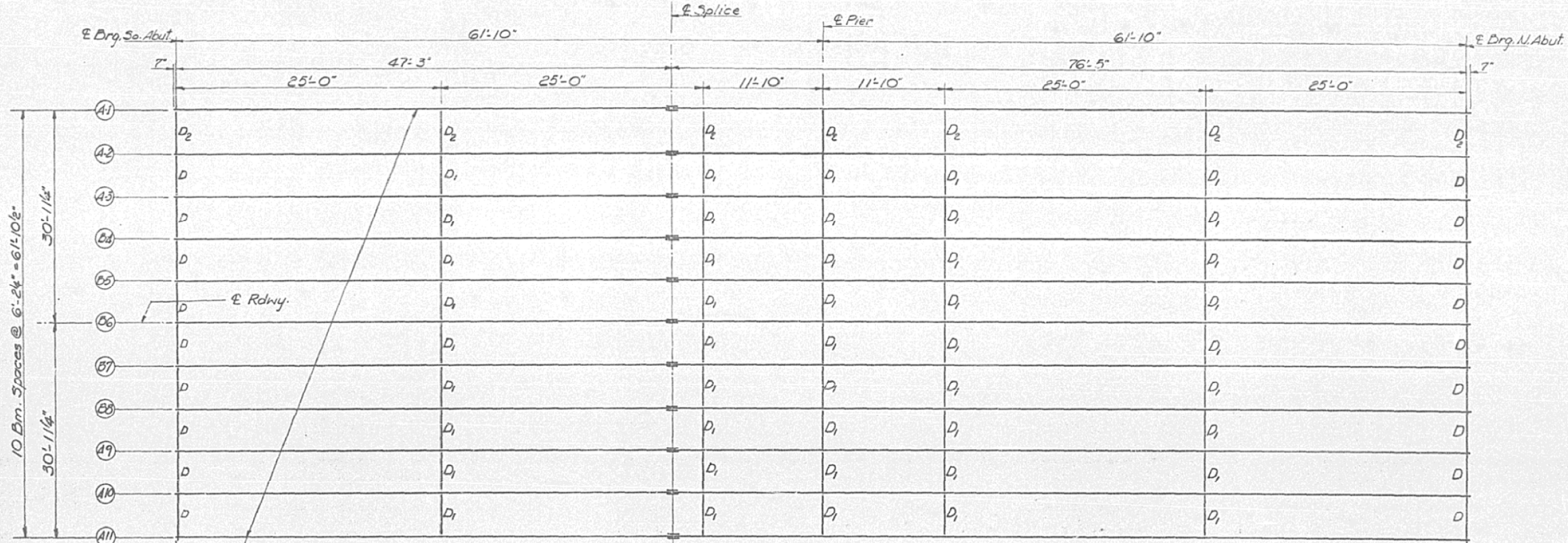


AS-BUILT PLANS FOR INFORMATION ONLY

STATE OF ILLINOIS
DEPARTMENT OF TRANSPORTATION

SHEET NO.	SECTION	COUNTY	TOTAL SHEETS	SHEET NO.	SHEET NO. 7 11 SHEETS
P.C. 132	(C-X) BR	Edgar	53	40	
P.C. ROAD DIST. NO. 7	BALDWIN	P.C. AID PROJECT			

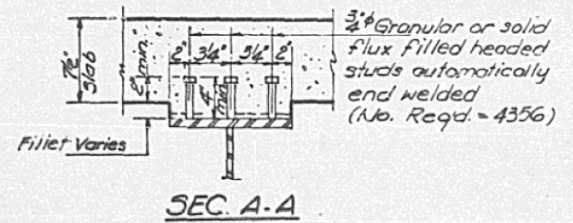
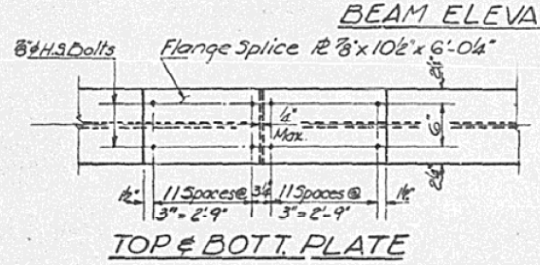
Note: Girders with the Prefix "A" indicates Stage I Construction. Prefix "B" indicates Stage II Construction.



Note: All structural steel shall meet the requirements of AASHTO M-222 Grade 50. The main load carrying member components subject to tensile stress shall conform to the Supplemental Requirements for Notch Toughness Zone C. These components are the tension flanges, webs and all splice plate material of the wide flange bms.

DESIGNED	R. Carroll
CHECKED	D.R. Gifford
DRAWN	A. Barrozo
CHECKED	D.R. Gifford

April 1 1977
 EXAMINED *Carl E. Thompson*
 PASSED
 APPROVED



Location	111	2410	349	448	547	6
E. Drg. S. Abut.	667.743	667.872	668.000	668.129	668.227	668.324
E. Splice	667.625	667.754	667.882	668.011	668.109	668.206
E. Pier	667.389	667.718	667.846	667.975	668.073	668.170
E. Drg. N. Abut.	667.435	667.564	667.692	667.821	667.919	668.016

STRUCTURAL STEEL
 F.A. RTE. 132 SEC. (C-X) BR
 EDGAR COUNTY
 STA. 911+27.95