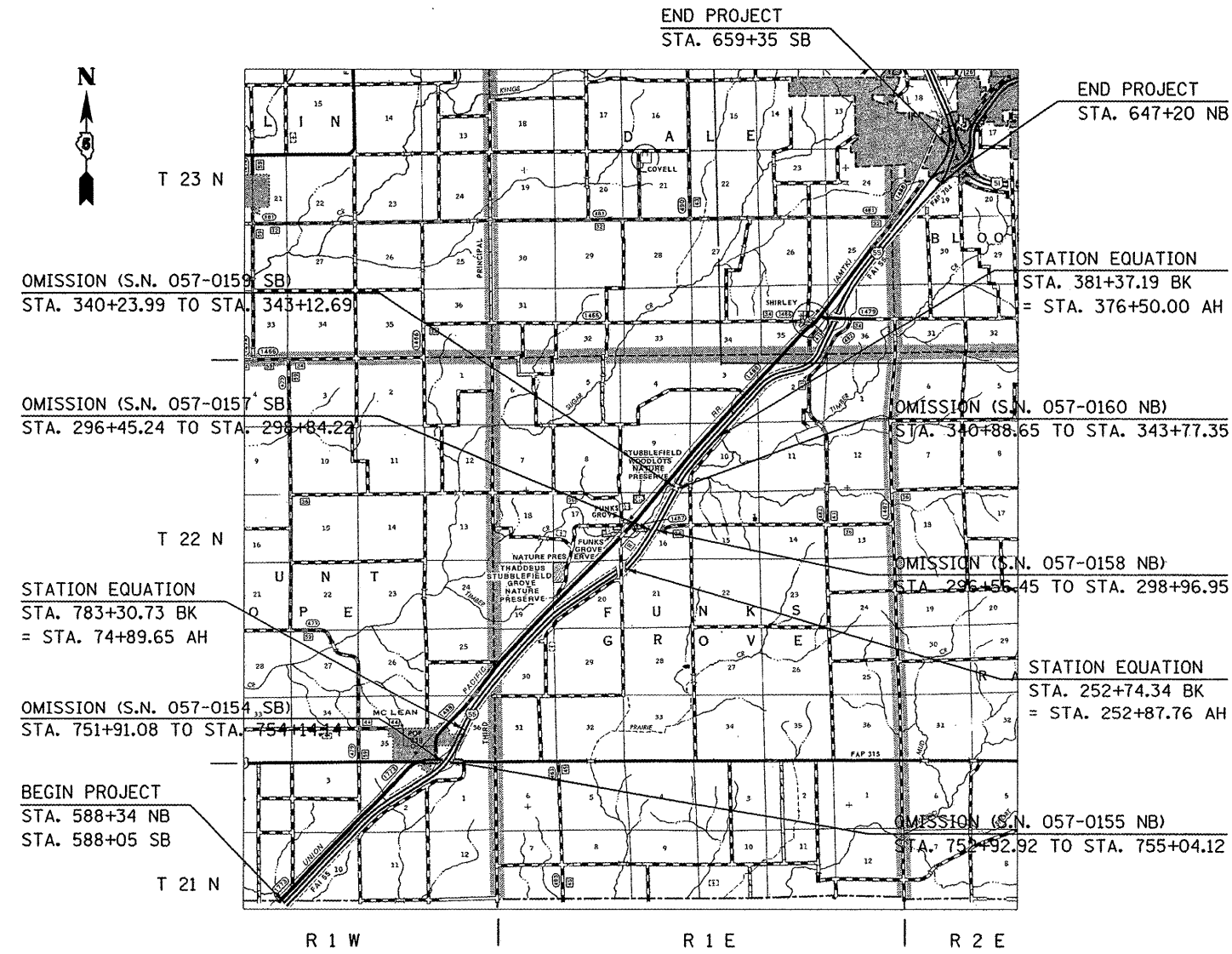
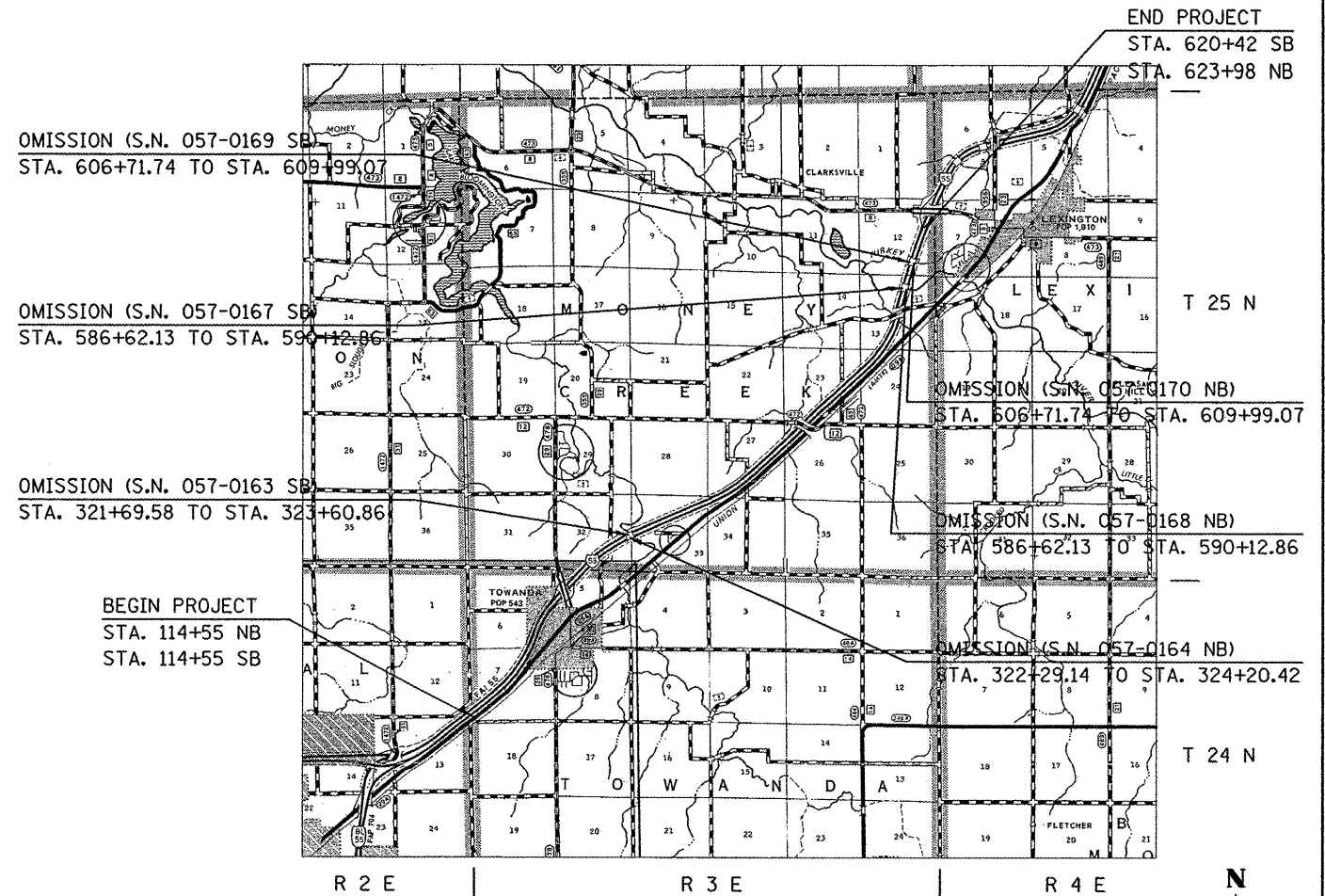


LOCATION MAP



LOCATION #1

GROSS LENGTH = 78,444.85' = 14.857 MILES
 NET LENGTH = 77,694.11' = 14.715 MILES

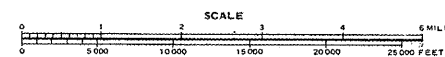


LOCATION #2

GROSS LENGTH = 50,943.00' = 9.648 MILES
 NET LENGTH = 50,073.66' = 9.484 MILES

TOTAL PROJECT

GROSS LENGTH = 129,387.85' = 24.505 MILES
 NET LENGTH = 127,767.77' = 24.198 MILES



FILE NAME =	USER NAME = hogenbj	DESIGNED - B.J.H. 10/27/2010	REVISED -
ct:\pwork\pwork\hogenbj\0244188\057088-sh.t-cover.dgn		DRAWN -	REVISED -
	PLOT SCALE = 100.0000' / IN.	CHECKED -	REVISED -
	PLOT DATE = 12/13/2010	DATE -	REVISED -

**STATE OF ILLINOIS
 DEPARTMENT OF TRANSPORTATION**

LOCATION MAPS

SCALE: _____ SHEET NO. 1 OF 1 SHEETS STA. _____ TO STA. _____

F.A.I. RTE.	SECTION	COUNTY	TOTAL SHEETS	SHEET NO.
55	HSIP FY2011-2	MCLEAN	11	2
CONTRACT NO. 70886				
ILLINOIS FED. AID PROJECT				