

STATE OF ILLINOIS
DEPARTMENT OF TRANSPORTATION
DIVISION OF HIGHWAYS

PROPOSED HIGHWAY PLANS

**F.A.I. ROUTE 55
SECTION HSIP FY2011-2
PROJECT HSIP-055-4(173)141
SAFETY IMPROVEMENTS
MCLEAN COUNTY**

C-95-072-10

LOGAN CO LINE TO SW OF BLOOMINGTON
& NE OF NORMAL TO LEXINGTON

FOR LOCATION MAP, SEE SHEET NO. 2

F.A.P. RTE.	SECTION	COUNTY	TOTAL SHEETS	SHEET NO.
55	HSIP FY2011-2	MCLEAN	11	1
		ILLINOIS	CONTRACT NO. 70886	

D-95-072-10



LOCATION OF SECTION INDICATED THUS: - [black rectangle] -

FOR INDEX OF SHEETS, SEE SHEET NO. 3
FOR SUMMARY OF QUANTITIES, SEE SHEET NO. 4

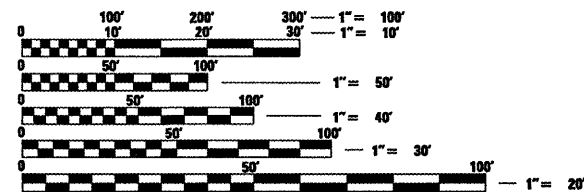
CURRENT TRAFFIC DATA

	LEG "A"	LEG "B"	LEG "C"	LEG "D"	LEG "E"
2009 ADT	20,200	21,500	22,100	25,800	23,500
P.U. %	65.1	66.9	67.3	74.2	70.9
S.U. %	4.1	3.6	3.5	3.1	4.1
M.U. %	30.8	29.5	29.2	22.7	25.0

LEG "A" IS FROM THE LOGAN COUNTY LINE TO US 136.
LEG "B" IS FROM US 136 TO FAU 6434 (SHIRLEY).
LEG "C" IS FROM FAU 6434 (SHIRLEY) TO JUST SOUTH OF I-74.
LEG "D" IS FROM I-55 BUSN AT NORMAL TO FAU 6431 (TOWANDA).
LEG "E" IS FROM FAU 6431 (TOWANDA) TO FAS 473 (LEXINGTON).

DESIGN DESIGNATION

N/A



FULL SIZE PLANS HAVE BEEN PREPARED USING STANDARD ENGINEERING SCALES. REDUCED SIZED PLANS WILL NOT CONFORM TO STANDARD SCALES. IN MAKING MEASUREMENTS ON REDUCED PLANS, THE ABOVE SCALES MAY BE USED.

J.U.L.I.E.
JOINT UTILITY LOCATION INFORMATION FOR EXCAVATION
1-800-892-0123 (MOUNT HOPE, FUNKS GROVE, DALE,
OR 811 BLOOMINGTON, TOWANDA, AND
MONEY CREEK TOWNSHIPS)

PROJECT ENGINEER: NANCY FASIG
SQUAD LEADER: BRIAN J. HOGAN
DESIGNER: BILLY J. MURPHY
(217)-465-4181

CONTRACT NO. 70886

GROSS LENGTH = 129,387.85 FT. = 24.505 MILE
NET LENGTH = 127,767.77 FT. = 24.198 MILE

STATE OF ILLINOIS
DEPARTMENT OF TRANSPORTATION
DIVISION OF HIGHWAYS

SUBMITTED 12/14 20 10

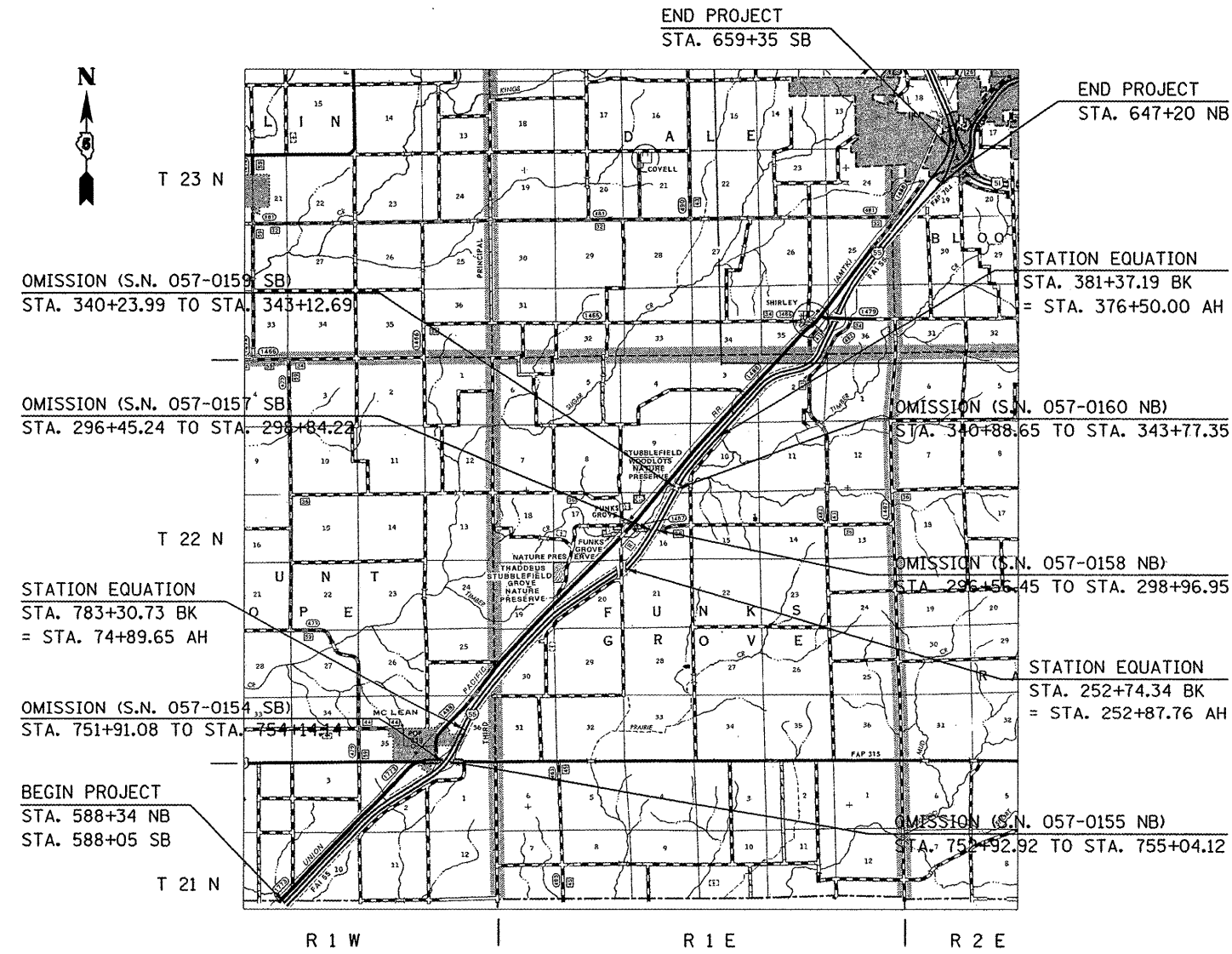
James C. Cowan
DEPUTY DIRECTOR OF HIGHWAYS, REGION ENGINEER

February 4, 2011
Scott E. Still P.E.
acting ENGINEER OF DESIGN AND ENVIRONMENT

February 4, 2011
Christine M. Reed /s/ *CR*
DIRECTOR OF HIGHWAYS, CHIEF ENGINEER

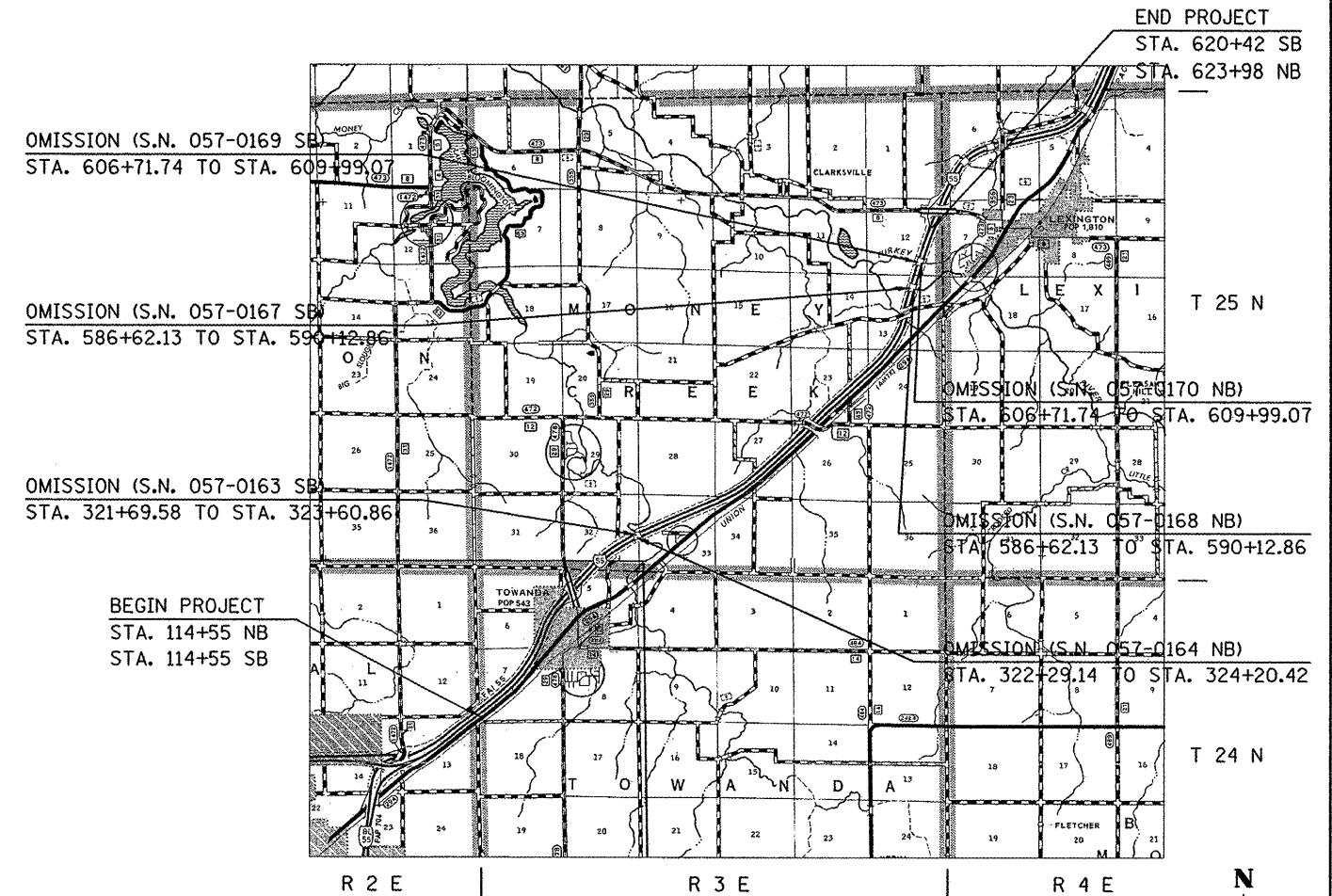
**PRINTED BY THE AUTHORITY
OF THE STATE OF ILLINOIS**

LOCATION MAP



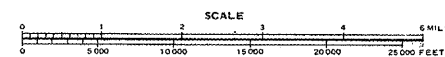
LOCATION #1

GROSS LENGTH = 78,444.85' = 14.857 MILES
NET LENGTH = 77,694.11' = 14.715 MILES



LOCATION #2

GROSS LENGTH = 50,943.00' = 9.648 MILES
NET LENGTH = 50,073.66' = 9.484 MILES



FILE NAME =	USER NAME = hogenbj	DESIGNED - B.J.H. 10/27/2010	REVISED -
ct:\pw_work\pwidot\hogenbj\d0244188\057088-sh.t-cover.dgn		DRAWN -	REVISED -
	PLOT SCALE = 100.0000' / IN.	CHECKED -	REVISED -
	PLOT DATE = 12/13/2010	DATE -	REVISED -

**STATE OF ILLINOIS
DEPARTMENT OF TRANSPORTATION**

LOCATION MAPS

SCALE: _____ SHEET NO. 1 OF 1 SHEETS STA. _____ TO STA. _____

F.A.I. RTE.	SECTION	COUNTY	TOTAL SHEETS	SHEET NO.
55	HSIP FY2011-2	MCLEAN	11	2
CONTRACT NO. 70886				
ILLINOIS FED. AID PROJECT				

INDEX OF SHEETS

SHEET NO.	DESCRIPTION
1	COVER SHEET
2	LOCATION MAPS
3	INDEX OF SHEETS
3	LIST OF HIGHWAY STANDARDS
3	GENERAL NOTES
4	SUMMARY OF QUANTITIES
5-9	TYPICAL CROSS SECTIONS
10-11	SCHEDULE OF QUANTITIES

LIST OF HIGHWAY STANDARDS

STANDARD NO.	DESCRIPTION
000001-06	STANDARD SYMBOLS, ABBREVIATIONS, AND PATTERNS
001006	DECIMAL OF AN INCH AND OF A FOOT
642001-01	SHOULDER RUMBLE STRIPS
701426-04	LANE CLOSURE, MULTILANE, INTERMITTENT OR MOVING OPERATION, FOR SPEEDS >= 45 MPH
701901-01	TRAFFIC CONTROL DEVICES

GENERAL NOTES

G.N.-100
 ENGLISH UNITS OF MEASUREMENT SHALL GOVERN OVER AND SUPERSEDE ANY METRIC UNITS SHOWN IN THIS CONTRACT. WHERE INCLUDED, METRIC UNITS ARE FOR INFORMATION ONLY.

G.N.-105.09A
 ALL ELEVATIONS SHOWN IN THE PLANS ARE BASED ON NORTH AMERICAN VERTICAL DATUM OF 1988. (NAVD 88)

NO COMMITMENTS

FILE NAME =	USER NAME = hoganbj	DESIGNED -	REVISED -	STATE OF ILLINOIS DEPARTMENT OF TRANSPORTATION	INDEX OF SHEETS & LIST OF HIGHWAY STANDARDS	F.A.I. RTE.	SECTION	COUNTY	TOTAL SHEETS	SHEET NO.
c:\pw_work\pwidot\hoganbj\d0244188\057086-shr-gennote.CEL	PLOT SCALE = 100.0000' / IN.	DRAWN -	REVISED -			55	HSIP FY2011-2	MCLEAN	11	3
PLOT DATE = 12/13/2010	DATE -	CHECKED -	REVISED -		SCALE: _____ SHEET NO. ___ OF ___ SHEETS STA. _____ TO STA. _____	CONTRACT NO. 70886 ILLINOIS FED. AID PROJECT				

SUMMARY OF QUANTITIES

LOCATION OF WORK:

F.A.I. 55
RURAL
INTERSTATE
MCLEAN COUNTY
LOCATION #1 STA. 588+05 TO STA. 659+35
LOCATION #2 STA. 114+55 TO STA. 623+98
LOGAN CO LINE TO SW OF BLOOMINGTON
& NE OF NORMAL TO LEXINGTON

FUNDING BREAKOUT:
CONSTRUCTION TYPE CODE:

90% FEDERAL / 10% STATE
0021

<u>CODE NO.</u>	<u>ITEM</u>	<u>UNIT</u>	<u>TOTAL QUANTITY</u>
40600100	BITUMINOUS MATERIALS (PRIME COAT)	GALLON	32,750.0
64200105	SHOULDER RUMBLE STRIPS	FOOT	492,000.0
67100100	MOBILIZATION	L SUM	1.0
X7015005	CHANGEABLE MESSAGE SIGN	CAL DA	21.0

* DENOTES SPECIALTY ITEM

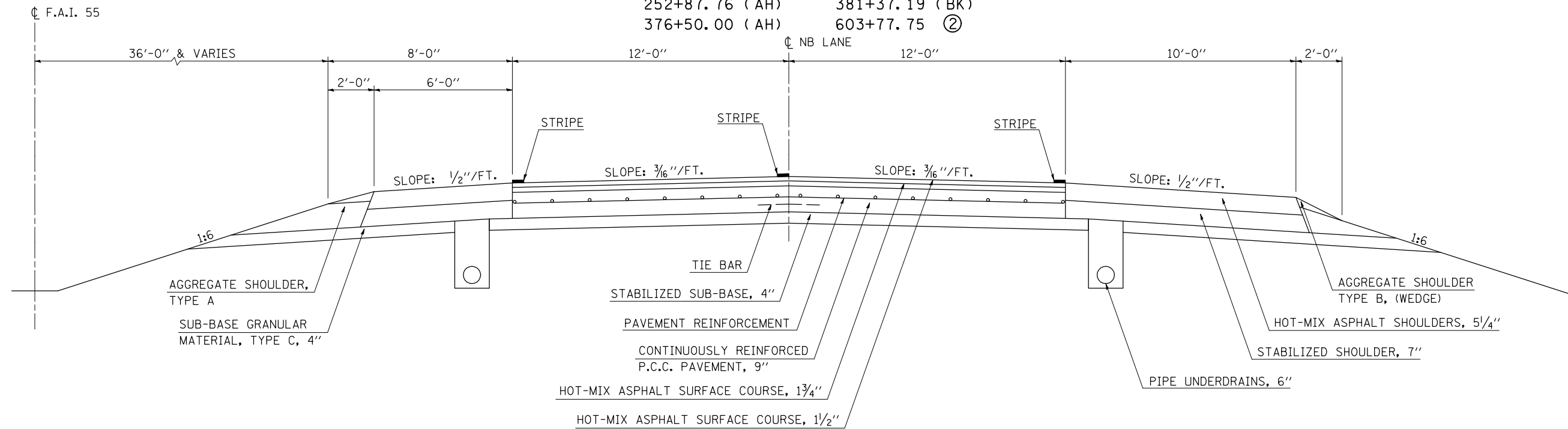
FILE NAME *	USER NAME = hoganbj	DESIGNED - BJM	REVISED -	STATE OF ILLINOIS DEPARTMENT OF TRANSPORTATION	SUMMARY OF QUANTITIES	F.A.I. RTE.	SECTION	COUNTY	TOTAL SHEETS	SHEET NO.	
c:\pwk\work\pwidot\hoganbj\d0244188\0570886-shr\details.CEL	DRAWN - BJH	CHECKED - AJB	REVISED -			55	HSIP FY2011-2	MCLEAN	11	4	
PLOT SCALE = 100.0000' / IN.	DATE - 11/17/2010	REVISED -	REVISED -			SCALE: _____ SHEET NO. 1 OF 1 SHEETS STA. _____ TO STA. _____		CONTRACT NO. 70886			
PLOT DATE = 12/13/2010	DATE - 11/17/2010	REVISED -	REVISED -			ILLINOIS FED. AID PROJECT					

① TYPICAL CROSS SECTION LOCATION #1

F.A.I. - 55 NORTHBOUND

STATION	TO	STATION
588+34.00		783+30.73 (BK)
74+89.65 (AH)		252+74.34 (BK)
252+87.76 (AH)		381+37.19 (BK)
376+50.00 (AH)		603+77.75 ②

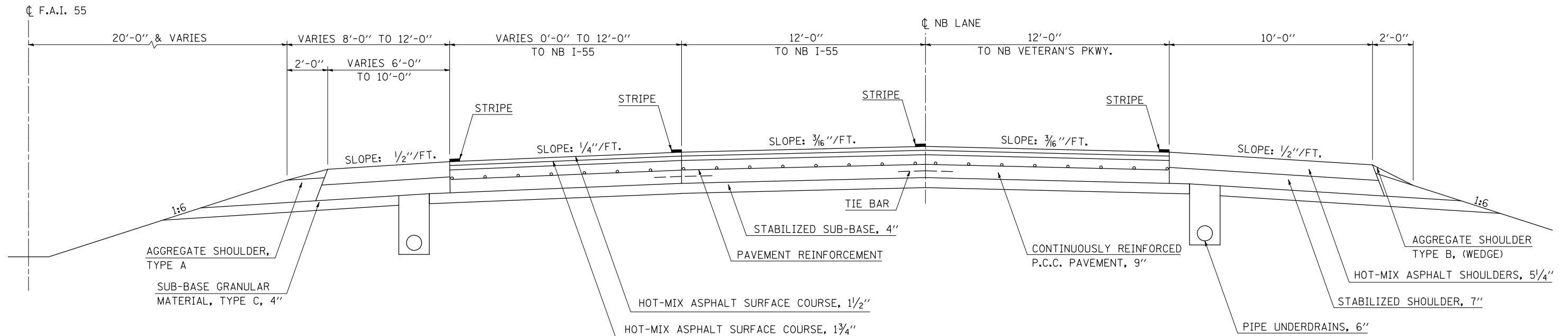
STRUCTURE OMISSIONS	
STATION 752+92.92 TO STATION 755+04.12;	S.N. 057-0155
STATION 296+56.45 TO STATION 298+96.95;	S.N. 057-0158
STATION 340+88.65 TO STATION 343+77.35;	S.N. 057-0160



② TYPICAL CROSS SECTION LOCATION #1

F.A.I. - 55 NORTHBOUND

STATION	TO	STATION
① 603+77.75		637+16.72 ③



FILE NAME =	USER NAME = hoganbj	DESIGNED - BJM	REVISED -
ct:\pw\work\p1dot\hoganbj\d0244188\0570886-sh1-typ1cel.CEL		DRAWN - BJH	REVISED -
	PLOT SCALE = 40.0000' / IN.	CHECKED - AJB	REVISED -
	PLOT DATE = 12/13/2010	DATE - 11/15/2010	REVISED -

STATE OF ILLINOIS
DEPARTMENT OF TRANSPORTATION

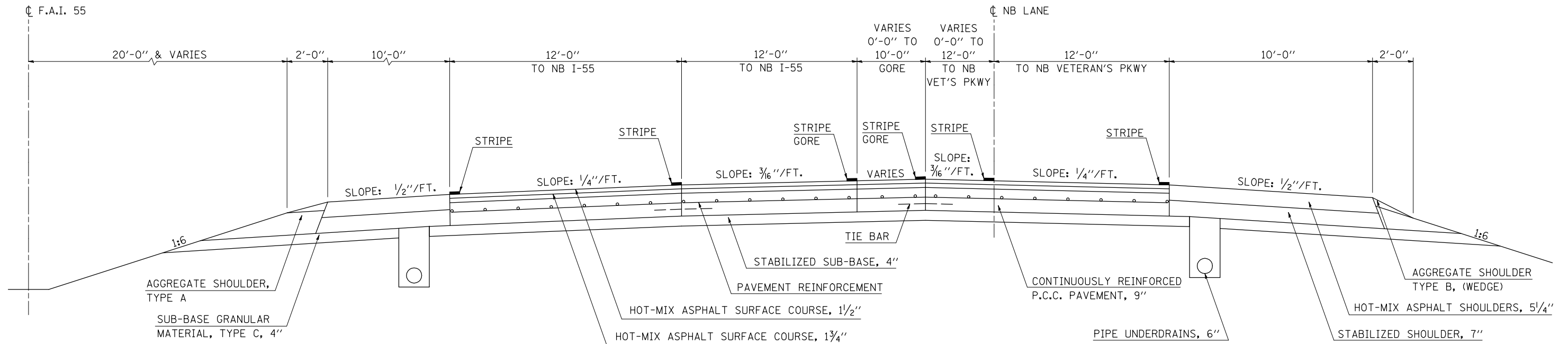
TYPICAL CROSS SECTIONS

SCALE: _____ SHEET NO. 1 OF 5 SHEETS STA. _____ TO STA. _____

F.A.I. RTE.	SECTION	COUNTY	TOTAL SHEETS	SHEET NO.
55	HSIP FY2011-2	MCLEAN	11	5
CONTRACT NO. 70886				
ILLINOIS FED. AID PROJECT				

③ TYPICAL CROSS SECTION LOCATION #1 F.A.I. – 55 NORTHBOUND

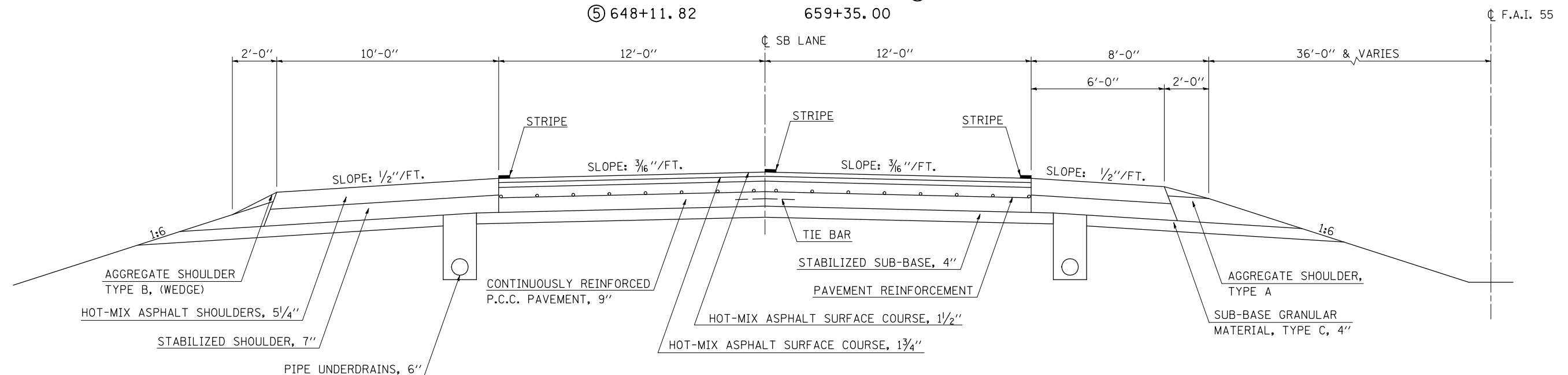
STATION TO STATION
② 637+16.72 TO 647+20.00



④ TYPICAL CROSS SECTION LOCATION #1 F.A.I. – 55 SOUTHBOUND

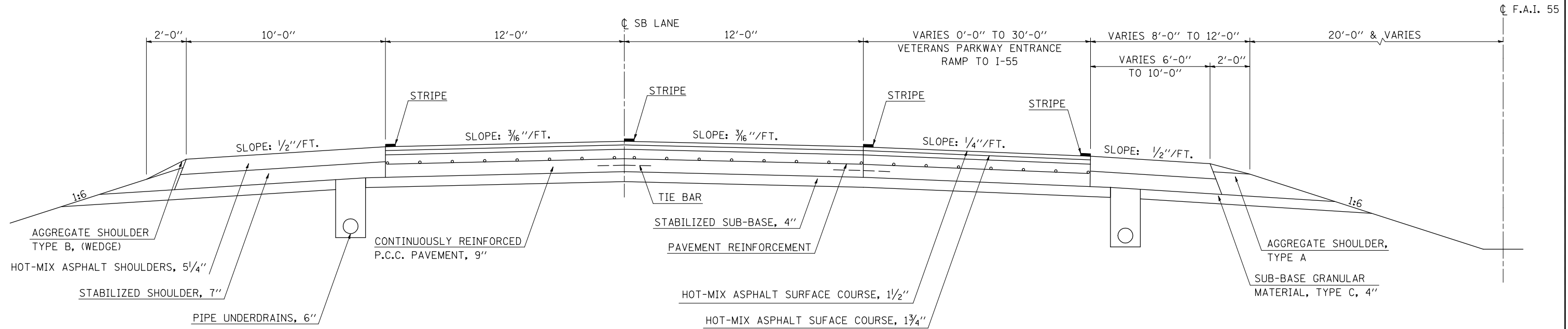
STATION TO STATION
⑤ 588+05.00 TO 783+30.73 (BK)
74+89.65 (AH) TO 252+74.34 (BK)
252+87.76 (AH) TO 381+37.19 (BK)
376+50.00 (AH) TO 613+90.99 (AH) ⑤
⑤ 648+11.82 TO 659+35.00

STRUCTURE OMISSIONS
STATION 751+91.08 TO STATION 754+14.14; S.N. 057-0154
STATION 296+45.24 TO STATION 298+84.22; S.N. 057-0157
STATION 340+23.99 TO STATION 343+12.69; S.N. 057-0159



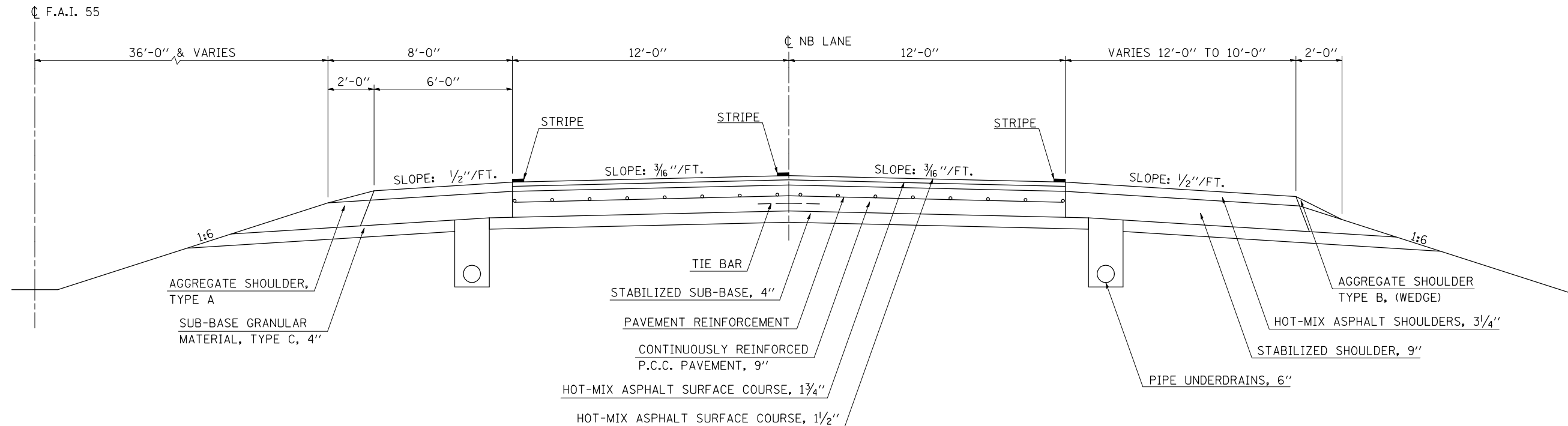
⑤ TYPICAL CROSS SECTION LOCATION #1
F.A.I. – 55 SOUTHBOUND

STATION TO STATION
 ④ 613+90.99 648+11.82 ④



⑥ TYPICAL CROSS SECTION LOCATION #2
F.A.I. – 55 NORTHBOUND

STATION TO STATION
 114+55.00 117+48.72 ⑦



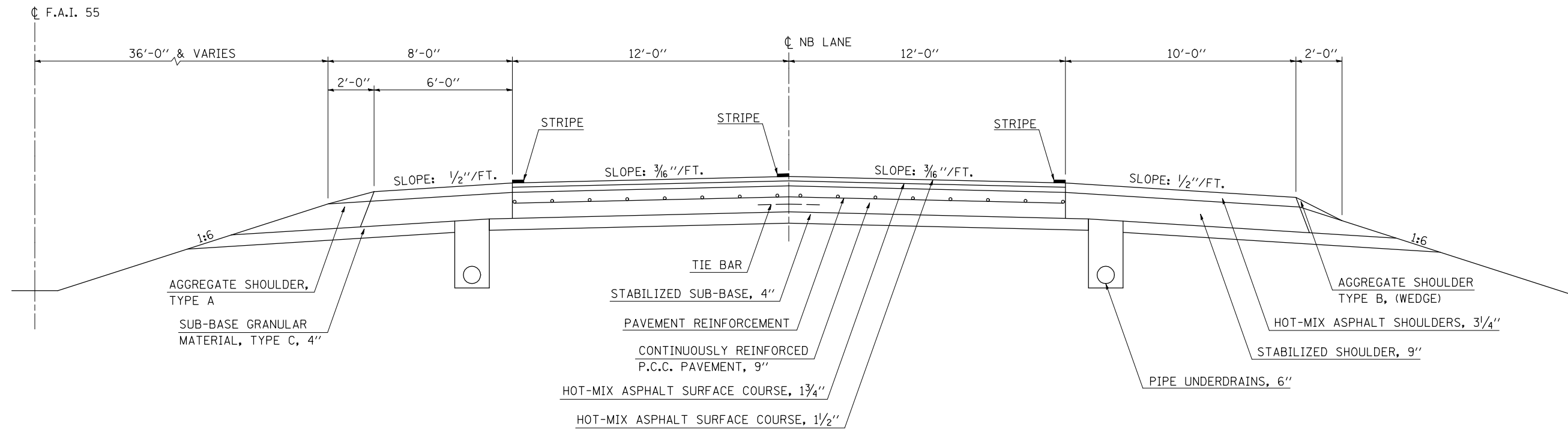
FILE NAME =	USER NAME = hoganbj	DESIGNED - BJM	REVISED -	STATE OF ILLINOIS DEPARTMENT OF TRANSPORTATION	TYPICAL CROSS SECTIONS			F.A.I. RTE. = 55	SECTION = HSIP FY2011-2	COUNTY = MCLEAN	TOTAL SHEETS = 11	SHEET NO. = 7
ct:\pwork\pwork\hoganbj\0244188\0570886-shd-typical.CEL	DRAWN - BJH	REVISED -	SCALE: -----					SHEET NO. 3 OF 5 SHEETS	STA. ----- TO STA. -----	CONTRACT NO. 70886		
PLOT SCALE = 40.0000' / IN.	CHECKED - AJB	REVISED -	ILLINOIS FED. AID PROJECT									
PLOT DATE = 12/13/2010	DATE - 11/15/2010	REVISED -										

7 TYPICAL CROSS SECTION LOCATION #2

F.A.I. - 55 NORTHBOUND

STATION 117+48.72 TO STATION 623+98.00

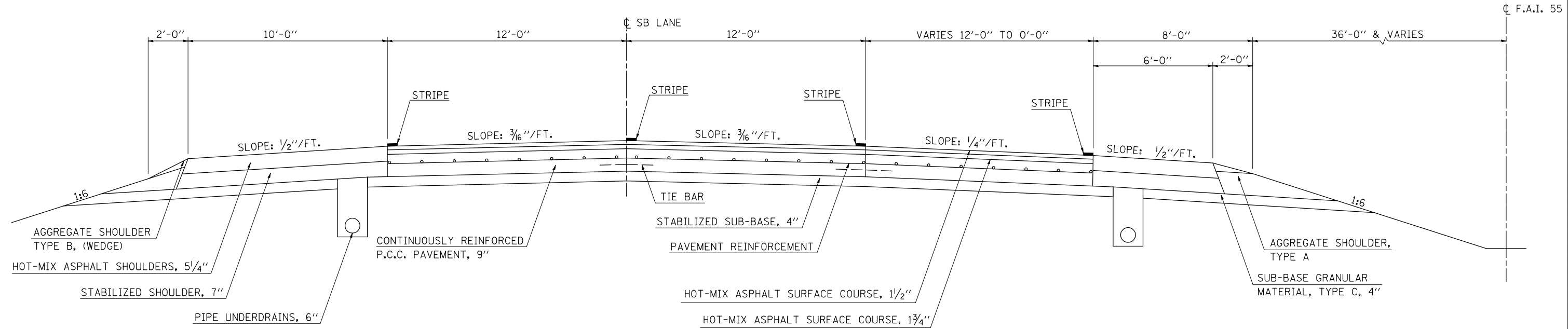
STRUCTURE OMISSIONS
 STATION 322+29.14 TO STATION 324+20.42; S.N. 057-0164
 STATION 586+62.13 TO STATION 590+12.86; S.N. 057-0167
 STATION 606+71.74 TO STATION 609+99.07; S.N. 057-0170



8 TYPICAL CROSS SECTION LOCATION #2

F.A.I. - 55 SOUTHBOUND

STATION 114+55.00 TO STATION 126+60.28



FILE NAME =	USER NAME = hoganbj	DESIGNED - BJM	REVISED -
ct:\pwork\pwork\hoganbj\0244188\0570886-shr-typical.CEL		DRAWN - BJH	REVISED -
PLOT SCALE = 40.0000' / IN.		CHECKED - AJB	REVISED -
PLOT DATE = 12/13/2010		DATE - 11/15/2010	REVISED -

STATE OF ILLINOIS
 DEPARTMENT OF TRANSPORTATION

TYPICAL CROSS SECTIONS
 SCALE: SHEET NO. 4 OF 5 SHEETS STA. TO STA.

F.A.I. RTE. 55	SECTION HSIP FY2011-2	COUNTY MCLEAN	TOTAL SHEETS 11	SHEET NO. 8
CONTRACT NO. 70886				ILLINOIS FED. AID PROJECT

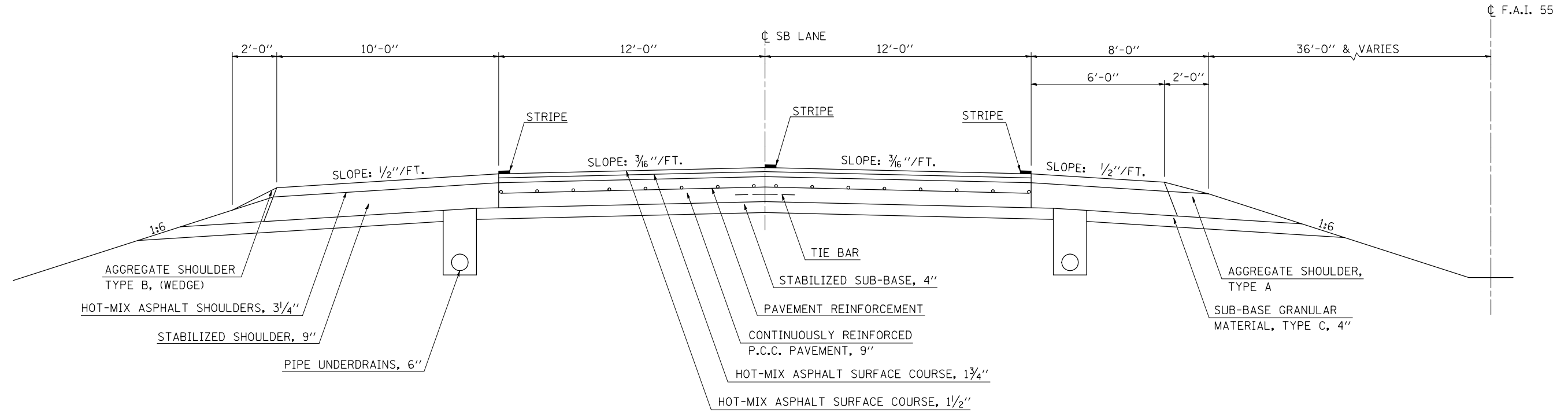
9 TYPICAL CROSS SECTION LOCATION #2

F.A.I. - 55 SOUTHBOUND

STATION TO STATION
 ⑧ 126+60.28 TO 620+42.00

STRUCTURE OMISSIONS

STATION 321+69.58 TO STATION 323+60.86; S.N. 057-0163
 STATION 586+62.13 TO STATION 590+12.86; S.N. 057-0168
 STATION 606+71.74 TO STATION 609+99.07; S.N. 057-0169



FILE NAME =	USER NAME = hoganbj	DESIGNED - BJM	REVISED -
ct:\pw\work\p\dot\hoganbj\d0244188\0570886-shr-typ10a1.CEL		DRAWN - BJH	REVISED -
	PLOT SCALE = 40.0000' / IN.	CHECKED - AJB	REVISED -
	PLOT DATE = 12/13/2010	DATE - 11/15/2010	REVISED -

**STATE OF ILLINOIS
 DEPARTMENT OF TRANSPORTATION**

TYPICAL CROSS SECTIONS

SCALE: _____ SHEET NO. 5 OF 5 SHEETS STA. _____ TO STA. _____

F.A.I. RTE.	SECTION	COUNTY	TOTAL SHEETS	SHEET NO.
55	HSIP FY2011-2	MCLEAN	11	9
				CONTRACT NO. 70886
ILLINOIS FED. AID PROJECT				

40600100 BITUMINOUS MATERIALS (PRIME COAT)

SCHEDULE OF QUANTITIES

LOCATION#1	STA.	TO	STA.	LENGTH (FEET)	WIDTH (FEET)	AREA (SQ YD)	GALLON
NBDS	588+34		730+07	14,173	10	15,747.8	1,181.1
NBDS	736+87		752+92.92	1,605.92	10	1,784.4	133.8
NBDS	755+04.12		765+42	1,037.88	10	1,153.2	86.5
NBDS	777+02		783+30.73	628.73	10	698.6	52.4
NBDS	74+89.65		252+74.34	17,784.69	10	19,760.8	1,482.1
NBDS	252+87.76		276+55	2,367.24	10	2,630.3	197.3
NBDS	282+96		293+25	1,029	10	1,143.3	85.8
NBDS	304+97		340+88.65	3,591.65	10	3,990.7	299.3
NBDS	343+77.35		381+37.19	3,759.84	10	4,177.6	313.3
NBDS	376+50		499+60	12,310	10	13,677.8	1,025.8
NBDS	506+36		531+87	2,551	10	2,834.4	212.6
NBDS	543+45		647+20	10,375	10	11,527.8	864.6
NBPS	588+34		590+83	249	6	166.0	12.5
NBPS	591+72		705+04	11,332	6	7,554.7	566.6
NBPS	705+89		752+92.92	4,703.92	6	3,135.9	235.2
NBPS	755+04.12		783+30.73	2,826.61	6	1,884.4	141.3
NBPS	74+89.65		87+34	1,244.35	6	829.6	62.2
NBPS	88+21		239+34	15,113	6	10,075.3	755.7
NBPS	240+23		252+74.34	1,251.34	6	834.2	62.6
NBPS	252+87.76		296+56.45	4,368.69	6	2,912.5	218.4
NBPS	298+96.95		318+42	1,945.05	6	1,296.7	97.3
NBPS	319+28		340+88.65	2,160.65	6	1,440.4	108.0
NBPS	343+77.35		381+37.19	3,759.84	6	2,506.6	188.0
NBPS	376+50		473+58	9,708	6	6,472.0	485.4
NBPS	474+30		603+77.75	12,947.75	6	8,631.8	647.4
NBPS	603+77.75		613+02	924.25	8	821.6	61.6
NBPS	613+87		637+16.72	2,329.72	8	2,070.9	155.3
NBPS	637+16.72		647+20	1,003.28	10	1,114.8	83.6
SBDS	588+05		727+68.74	13,963.74	10	15,515.3	1,163.6
SBDS	739+85		751+91.08	1,206.08	10	1,340.1	100.5
SBDS	754+14.14		767+75	1,360.86	10	1,512.1	113.4
SBDS	774+34.41		783+30.73	896.32	10	995.9	74.7
SBDS	74+89.65		252+74.34	17,784.69	10	19,760.8	1,482.1
SBDS	252+87.76		256+17.55	329.79	10	366.4	27.5
SBDS	268+13		285+78	1,765	10	1,961.1	147.1
SBDS	292+20.60		296+45.24	424.64	10	471.8	35.4
SBDS	298+84.22		340+23.99	4,139.77	10	4,599.7	345.0
SBDS	343+12.69		381+37.19	3,824.50	10	4,249.4	318.7
SBDS	376+50		495+17.38	11,867.38	10	13,186.0	988.9
SBDS	506+72		529+72	2,300	10	2,555.6	191.7
SBDS	536+28.57		659+35	12,306.43	10	13,673.8	1,025.5
SBPS	588+05		590+83	278	6	185.3	13.9
SBPS	591+72		705+04	11,332	6	7,554.7	566.6
SBPS	705+89		751+91.08	4,602.08	6	3,068.1	230.1
SBPS	754+14.14		783+30.73	2,916.59	6	1,944.4	145.8
SBPS	74+89.65		87+34	1,244.35	6	829.6	62.2
SBPS	88+21		239+34	15,113	6	10,075.3	755.7
SBPS	240+23		252+74.34	1,251.34	6	834.2	62.6
SBPS	252+87.76		296+45.24	4,357.48	6	2,905.0	217.9
SBPS	298+84.22		318+42	1,957.78	6	1,305.2	97.9
SBPS	319+28		340+23.99	2,095.99	6	1,397.3	104.8
SBPS	343+12.69		381+37.19	3,824.50	6	2,549.7	191.2
SBPS	376+50		473+58	9,708	6	6,472.0	485.4
SBPS	474+30		613+02	13,872	6	9,248.0	693.6
SBPS	613+87		613+90.99	3.99	6	2.7	0.2
SBPS	613+90.99		648+11.82	3,420.83	8	3,040.7	228.1
SBPS	648+11.82		659+35	1,123.18	6	748.8	56.2
LOCATION#1 TOTAL							19,742.0

**40600100 BITUMINOUS MATERIALS (PRIME COAT)
CONTINUED**

LOCATION#2	STA.	TO	STA.	LENGTH (FEET)	WIDTH (FEET)	AREA (SQ YD)	GALLON
NBDS	114+55		117+48.72	293.72	11	359.0	26.9
NBDS	117+48.72		240+18	12,269.28	10	13,632.5	1,022.4
NBDS	246+85		268+68	2,183	10	2,425.6	181.9
NBDS	280+00		322+29.14	4,229.14	10	4,699.0	352.4
NBDS	324+20.42		586+62.13	26,241.71	10	29,157.5	2,186.8
NBDS	590+12.86		606+71.74	1,658.88	10	1,843.2	138.2
NBDS	609+99.07		623+98	1,398.93	10	1,554.4	116.6
NBPS	114+55		199+47	8,492	6	5,661.3	424.6
NBPS	200+06		322+29.14	12,223.14	6	8,148.8	611.2
NBPS	324+20.42		412+43	8,822.58	6	5,881.7	441.1
NBPS	413+00		586+62.13	17,362.13	6	11,574.8	868.1
NBPS	590+12.86		606+71.74	1,658.88	6	1,105.9	82.9
NBPS	609+99.07		614+49	449.93	6	300.0	22.5
NBPS	615+08		623+98	890	6	593.3	44.5
SBDS	114+55		238+47	12,392	10	13,768.9	1,032.7
SBDS	250+09		271+70	2,161	10	2,401.1	180.1
SBDS	278+53		321+69.58	4,316.58	10	4,796.2	359.7
SBDS	323+60.86		586+62.13	26,301.27	10	29,223.6	2,191.8
SBDS	590+12.86		606+71.74	1,658.88	10	1,843.2	138.2
SBDS	609+99.07		620+42	1,042.93	10	1,158.8	86.9
SBPS	114+55		199+47	8,492	6	5,661.3	424.6
SBPS	200+06		321+69.58	12,163.58	6	8,109.1	608.2
SBPS	323+60.86		412+43	8,882.14	6	5,921.4	444.1
SBPS	413+00		586+62.13	17,362.13	6	11,574.8	868.1
SBPS	590+12.86		606+71.74	1,658.88	6	1,105.9	82.9
SBPS	609+99.07		614+49	449.93	6	300.0	22.5
SBPS	615+08		620+42	534	6	356.0	26.7
LOCATION#2 TOTAL							12,986.6
GRAND TOTAL							32,728.6
ROUND TO							32,750.0

AREA(Sq Yd) = Length(Ft) X Width(Ft) / 9 (Sq Ft/ Sq Yd)
RATE OF APPLICATION = 0.075 Gallons / Sq Yd

SCHEDULE OF QUANTITIES

64200105 SHOULDER RUMBLE STRIPS

LOCATION #1	STA.	TO	STA.	LENGTH (FEET)
NBDS	588+34		730+07	14,173.00
NBDS	736+87		752+92.92	1,605.92
NBDS	755+04.12		765+42	1,037.88
NBDS	777+02		783+30.73	628.73
NBDS	74+89.65		252+74.34	17,784.69
NBDS	252+87.76		276+55	2,367.24
NBDS	282+96		293+25	1,029.00
NBDS	304+97		340+88.65	3,591.65
NBDS	343+77.35		381+37.19	3,759.84
NBDS	376+50		499+60	12,310.00
NBDS	506+36		531+87	2,551.00
NBDS	543+45		647+20	10,375.00
NBPS	588+34		590+83	249.00
NBPS	591+72		705+04	11,332.00
NBPS	705+89		752+92.92	4,703.92
NBPS	755+04.12		783+30.73	2,826.61
NBPS	74+89.65		87+34	1,244.35
NBPS	88+21		239+34	15,113.00
NBPS	240+23		252+74.34	1,251.34
NBPS	252+87.76		296+56.45	4,368.69
NBPS	298+96.95		318+42	1,945.05
NBPS	319+28		340+88.65	2,160.65
NBPS	343+77.35		381+37.19	3,759.84
NBPS	376+50		473+58	9,708.00
NBPS	474+30		613+02	13,872.00
NBPS	613+87		647+20	3,333.00
SBDS	588+05		727+68.74	13,963.74
SBDS	739+85		751+91.08	1,206.08
SBDS	754+14.14		767+75	1,360.86
SBDS	774+34.41		783+30.73	896.32
SBDS	74+89.65		252+74.34	17,784.69
SBDS	252+87.76		256+17.55	329.79
SBDS	268+13		285+78	1,765.00
SBDS	292+20.60		296+45.24	424.64
SBDS	298+84.22		340+23.99	4,139.77
SBDS	343+12.69		381+37.19	3,824.50
SBDS	376+50		495+17.38	11,867.38
SBDS	506+72		529+72	2,300.00
SBDS	536+28.57		659+35	12,306.43
SBPS	588+05		590+83	278.00
SBPS	591+72		705+04	11,332.00
SBPS	705+89		751+91.08	4,602.08
SBPS	754+14.14		783+30.73	2,916.59
SBPS	74+89.65		87+34	1,244.35
SBPS	88+21		239+34	15,113.00
SBPS	240+23		252+74.34	1,251.34
SBPS	252+87.76		296+45.24	4,357.48
SBPS	298+84.22		318+42	1,957.78
SBPS	319+28		340+23.99	2,095.99
SBPS	343+12.69		381+37.19	3,824.50
SBPS	376+50		473+58	9,708.00
SBPS	474+30		613+02	13,872.00
SBPS	613+87		659+35	4,548.00
LOCATION #1 TOTAL =				296,351.71

64200105 SHOULDER RUMBLE STRIPS

LOCATION #2	STA.	TO	STA.	LENGTH (FEET)
NBDS	114+55		240+18	12,563.00
NBDS	246+85		268+68	2,183.00
NBDS	280+00		322+29.14	4,229.14
NBDS	324+20.42		586+62.13	26,241.71
NBDS	590+12.86		606+71.74	1,658.88
NBDS	609+99.07		623+98	1,398.93
NBPS	114+55		199+47	8,492.00
NBPS	200+06		322+29.14	12,223.14
NBPS	324+20.42		412+43	8,822.58
NBPS	413+00		586+62.13	17,362.13
NBPS	590+12.86		606+71.74	1,658.88
NBPS	609+99.07		614+49	449.93
NBPS	615+08		623+98	890.00
SBDS	114+55		238+47	12,392.00
SBDS	250+09		271+70	2,161.00
SBDS	278+53		321+69.58	4,316.58
SBDS	323+60.86		586+62.13	26,301.27
SBDS	590+12.86		606+71.74	1,658.88
SBDS	609+99.07		620+42	1,042.93
SBPS	114+55		199+47	8,492.00
SBPS	200+06		321+69.58	12,163.58
SBPS	323+60.86		412+43	8,882.14
SBPS	413+00		586+62.13	17,362.13
SBPS	590+12.86		606+71.74	1,658.88
SBPS	609+99.07		614+49	449.93
SBPS	615+08		620+42	534.00
LOCATION # 2 TOTAL =				195,588.64

GRAND TOTAL = 296,351.71' + 195,588.64' = 491,940.35'
 ROUND TO: 492,000.00 FEET

X7015005 CHANGEABLE MESSAGE SIGN

LOCATION	3 DAYS BEFORE CONSTRUCTION OPERATIONS BEGIN	FOR PROJECT DURATION (15 DAYS)
I-55 NORTH OF LOCATION #1 (SB LANES)	3	3.75
I-55 SOUTH OF LOCATION #1 (NB LANES)	0	3.75
I-55 NORTH OF LOCATION #2 (SB LANES)	3	3.75
I-55 SOUTH OF LOCATION #2 (NB LANES)	0	3.75
TOTALS =	6	15

GRAND TOTAL = 21 CAL DAYS