

F.A. RTE.	SECTION	COUNTY	TOTAL SHEETS	SHEET NO.
N/A	DE MISC FY 2011-1	MCLEAN	4	1
ILLINOIS		CONTRACT NO. 70888		

STATE OF ILLINOIS  
DEPARTMENT OF TRANSPORTATION  
DIVISION OF HIGHWAYS

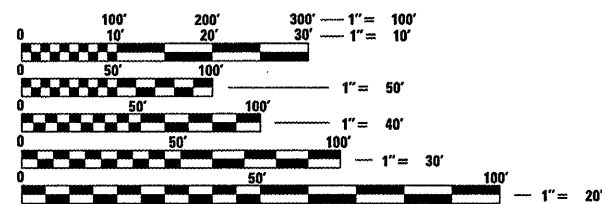
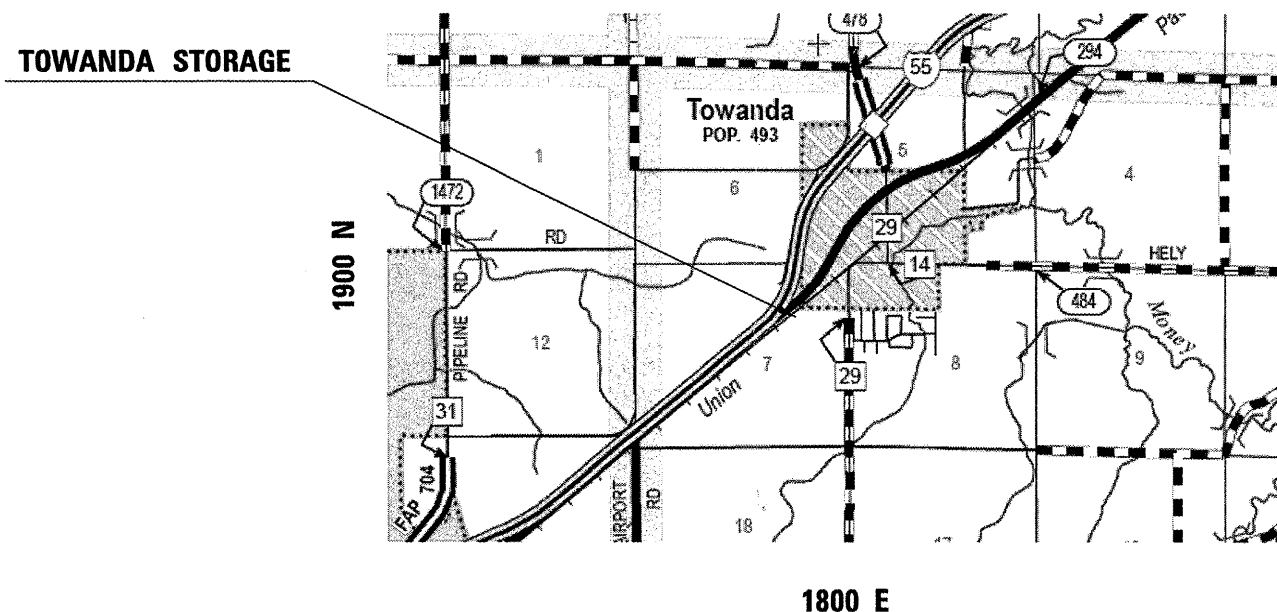
**PROPOSED  
HIGHWAY PLANS**

F.A.U. ROUTE 6348 (OLD U.S. ROUTE 66)  
SECTION DE MISC FY 2011-1

RESURFACING OF PARKING LOT  
MCLEAN COUNTY

C-95-065-10

FOR INDEX OF SHEETS, SEE SHEET NO. 2  
FOR SUMMARY OF QUANTITIES SEE SHEET NO. 3



FULL SIZE PLANS HAVE BEEN PREPARED USING STANDARD ENGINEERING SCALES. REDUCED SIZED PLANS WILL NOT CONFORM TO STANDARD SCALES. IN MAKING MEASUREMENTS ON REDUCED PLANS, THE ABOVE SCALES MAY BE USED.

J.U.L.I.E.  
JOINT UTILITY LOCATION INFORMATION FOR EXCAVATION  
1-800-892-0123  
OR 811

PROJECT ENGINEER: KEVIN TRAPP  
DESIGNER: MATT BOWER  
(217) 465-4181  
CONTRACT NO. 70888

STATE OF ILLINOIS  
DEPARTMENT OF TRANSPORTATION  
DIVISION OF HIGHWAYS

SUBMITTED 11/23 20 10  
*Joseph E. Lawrence*  
DEPUTY DIRECTOR OF HIGHWAYS, REGION ENGINEER

Feb 4 20 11  
*Scott E. Stett P.E. Ica*  
acting ENGINEER OF DESIGN AND ENVIRONMENT

Feb 4 20 11  
*Christine M. Reed Ica*  
DIRECTOR OF HIGHWAYS, CHIEF ENGINEER

PRINTED BY THE AUTHORITY  
OF THE STATE OF ILLINOIS

# INDEX OF SHEETS

SHEET NO.	DESCRIPTION
1	COVER SHEET
2	INDEX OF SHEETS / HIGHWAY STANDARDS / GENERAL NOTES
3	SUMMARY AND SCHEDULE OF QUANTITIES AND TYPICAL CROSS SECTION
4	PLAN VIEW OF TOWANDA STORAGE

# HIGHWAY STANDARDS

STANDARD NO.	DESCRIPTION
000001-06	STANDARD SYMBOLS, ABBREVIATIONS, AND PATTERNS

# GENERAL NOTES

G.N.-100  
ENGLISH UNITS OF MEASUREMENT SHALL GOVERN OVER AND SUPERSEDE ANY METRIC UNITS SHOWN IN THIS CONTRACT. WHERE INCLUDED, METRIC UNITS ARE FOR INFORMATION ONLY.

G.N.-1004.01  
COARSE AGGREGATE GRADATION CA-10 MAY BE USED WHENEVER COARSE AGGREGATE CA-6 IS SPECIFIED IN THE STANDARD SPECIFICATIONS.

G.N.-406  
THE QUANTITIES INCLUDED IN THE PLANS FOR HOT-MIX ASPHALT RESURFACING ARE INTENDED TO GIVE THE COVERAGE SHOWN ON THE TYPICAL CROSS SECTIONS. IT IS NOT INTENDED TO INCREASE THE THICKNESS OF THE HOT-MIX ASPHALT MIXTURE IN ORDER TO USE ALL OF THE QUANTITIES INCLUDED IN THE CONTRACT.

G.N.-406H	
LOCATION	TOWANDA STORAGE
MIXTURE USE	SURFACE
AC/PG	PG 64-22
RAP % (MAX)	15%
DESIGN AIR VOIDS	4.0% @ Ndes = 50
MIX COMP(GRADATION)	IL 9.5
FRICTION AGGREGATE	MIX C

NO COMMITMENTS

FILE NAME *	USER NAME * bowerml	DESIGNED - MLB	REVISED -	<b>STATE OF ILLINOIS DEPARTMENT OF TRANSPORTATION</b>	<b>INDEX OF SHEETS, HIGHWAY STANDARDS, &amp; GENERAL NOTES</b>	F.A. RTE.	SECTION	COUNTY	TOTAL SHEETS	SHEET NO.	
c:\piv\work\pivdot\bowerm\0243185\057088-sht\gennote.dgn	PLOT SCALE = 40.0000' / IN.	DRAWN - MLB	REVISED -			N/A	DE MISC FY 2011-1	MCLEAN	4	2	
PLOT DATE = 11/23/2010	DATE = 10/27/10	CHECKED -	REVISED -			CONTRACT NO. 70888					
						[ILLINOIS] FED. AID PROJECT					
						SCALE: N/A	SHEET NO.	OF	SHEETS	STA.	TO STA.

**SUMMARY OF QUANTITIES**

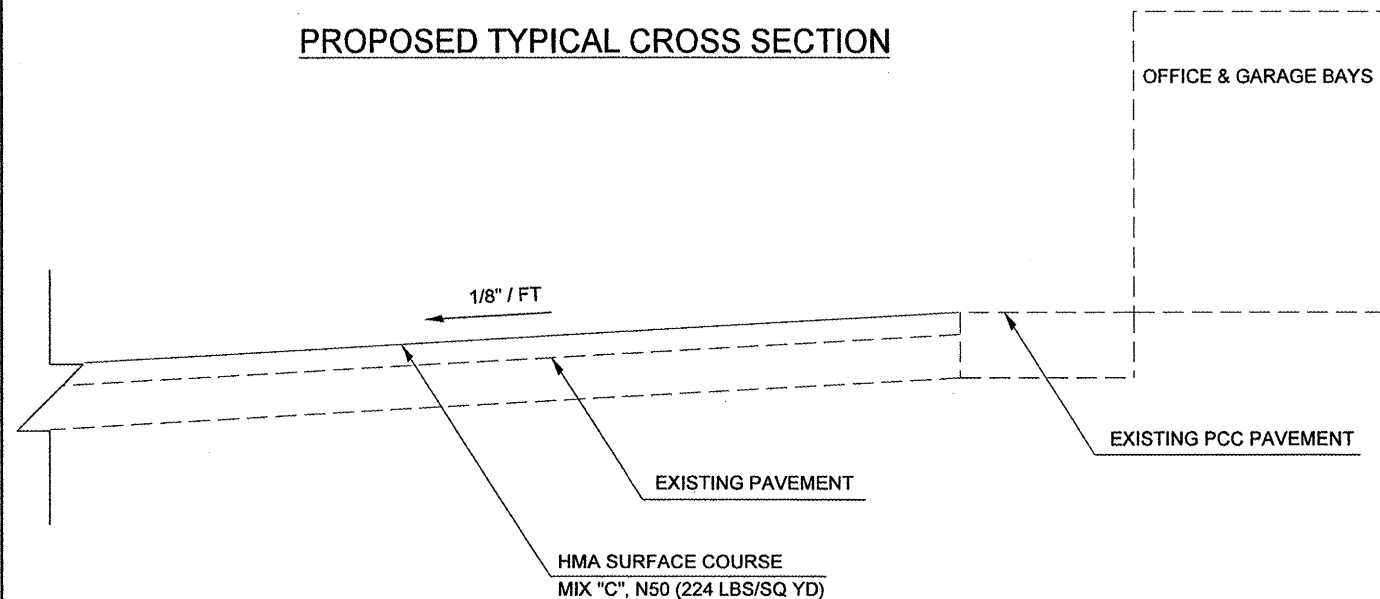
LOCATION OF WORK: TOWANDA STORAGE  
 MCLEAN COUNTY  
 URBAN

FUNDING BREAKOUT: 100% STATE

CONSTRUCTION TYPE CODE: **0005**

CODE NO	ITEM	UNIT	TOTAL QUANTITY
40600100	BITUMINOUS MATERIALS (PRIME COAT)	GALLON	690.0
40600300	AGGREGATE (PRIME COAT)	TON	14.0
40603310	HOT-MIX ASPHALT SURFACE COURSE, MIX "C", N50	TON	773.0
67100100	MOBILIZATION	L SUM	1.0

**PROPOSED TYPICAL CROSS SECTION**

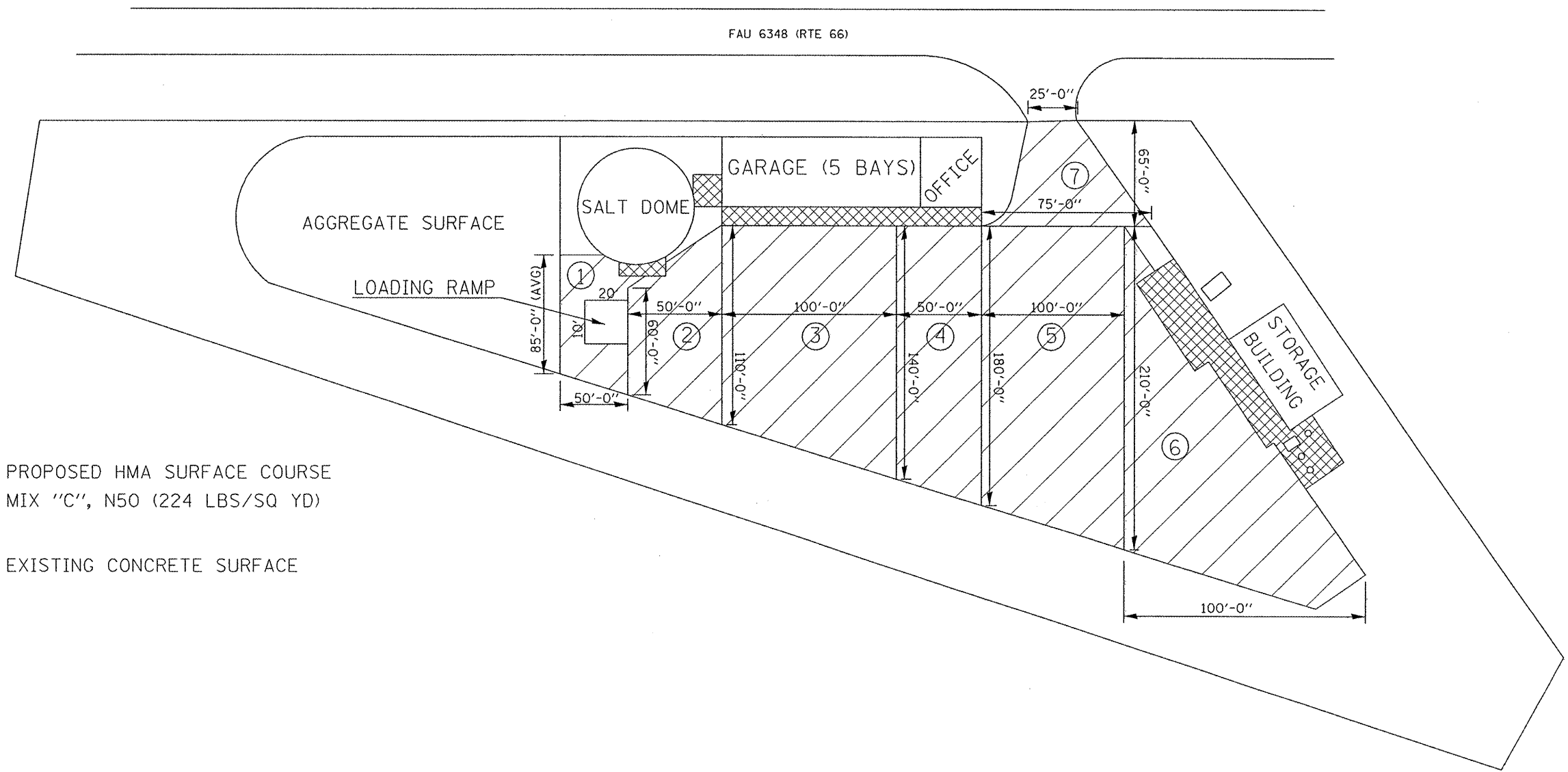


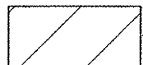

NOTES: TO MAINTAIN THE 1/8"/FT SLOPE THE PARKING LOT SHALL BE PAVED IN A DIRECTION THAT RUNS PARALLEL WITH THE GARAGE AND OFFICE.

ANY MILLING THAT IS NEEDED WILL BE DONE BY THE TOWANDA MAINTENANCE YARD PRIOR TO THE CONTRACT START DATE.

**SCHEDULE OF QUANTITIES**

LOCATION	AREA (SQ YD)	HMA SC THICKNESS (INCHES)	40600100 BIT MATLS		40600300 AGG PR CT		40603310 HMA SURF MIX "C", N50	
			PR CT (GAL)	AGG PR CT (TONS)	PR CT (TONS)	AGG PR CT (TONS)		
1	450.0	2.0	45.0	0.90	50.4			
2	472.2	2.0	47.2	0.94	52.9			
3	1388.9	2.0	138.9	2.78	155.6			
4	888.9	2.0	88.9	1.78	99.6			
5	2166.7	2.0	216.7	4.33	242.7			
6	1166.7	2.0	116.7	2.33	130.7			
7	361.1	2.0	36.1	0.72	40.4			
TOTAL=			689.5	13.8	772.3			
USE=			690.0	14.0	773.0			



-  PROPOSED HMA SURFACE COURSE  
MIX "C", N50 (224 LBS/SQ YD)
-  EXISTING CONCRETE SURFACE

NOT TO SCALE

FILE NAME =	USER NAME = boverml	DESIGNED - MLB	REVISED -	<b>STATE OF ILLINOIS DEPARTMENT OF TRANSPORTATION</b>	<b>PLAN VIEW OF TOWANDA STORAGE</b>				F.A. RTE.	SECTION	COUNTY	TOTAL SHEETS	SHEET NO.
c:\pwwork\pwwork\boverml\d0243185\0570892-sht-plan.dgn		DRAWN - MLB	REVISED -		N/A	DE MISC FY2011-1	MCLEAN	4	4				
PLOT SCALE = 40.0000' / IN.		CHECKED -	REVISED -		SCALE: N/A	SHEET NO. OF SHEETS	STA. TO STA.	CONTRACT NO. 70888					
PLOT DATE = 11/23/2010		DATE - 10/27/10	REVISED -		ILLINOIS FED. AID PROJECT								