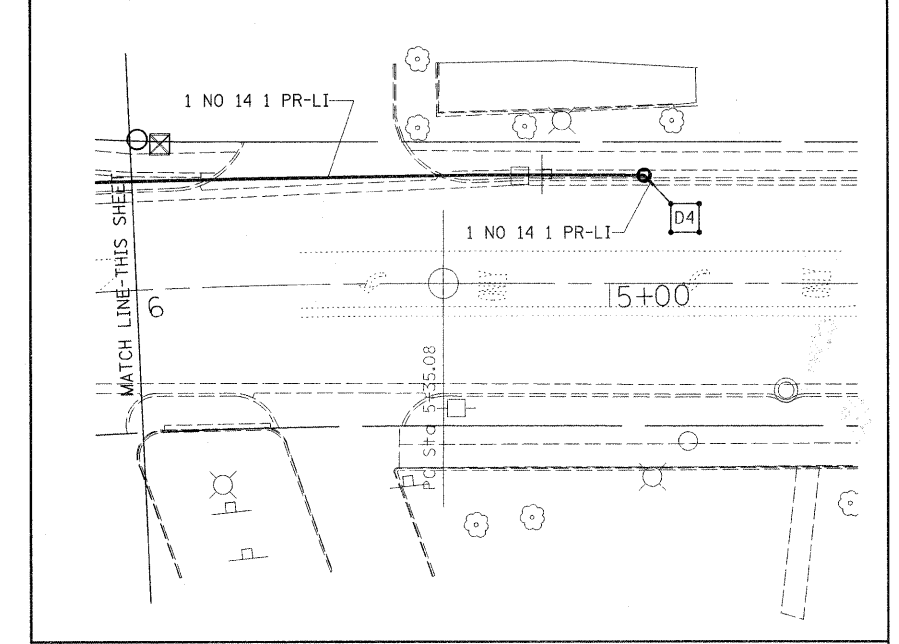
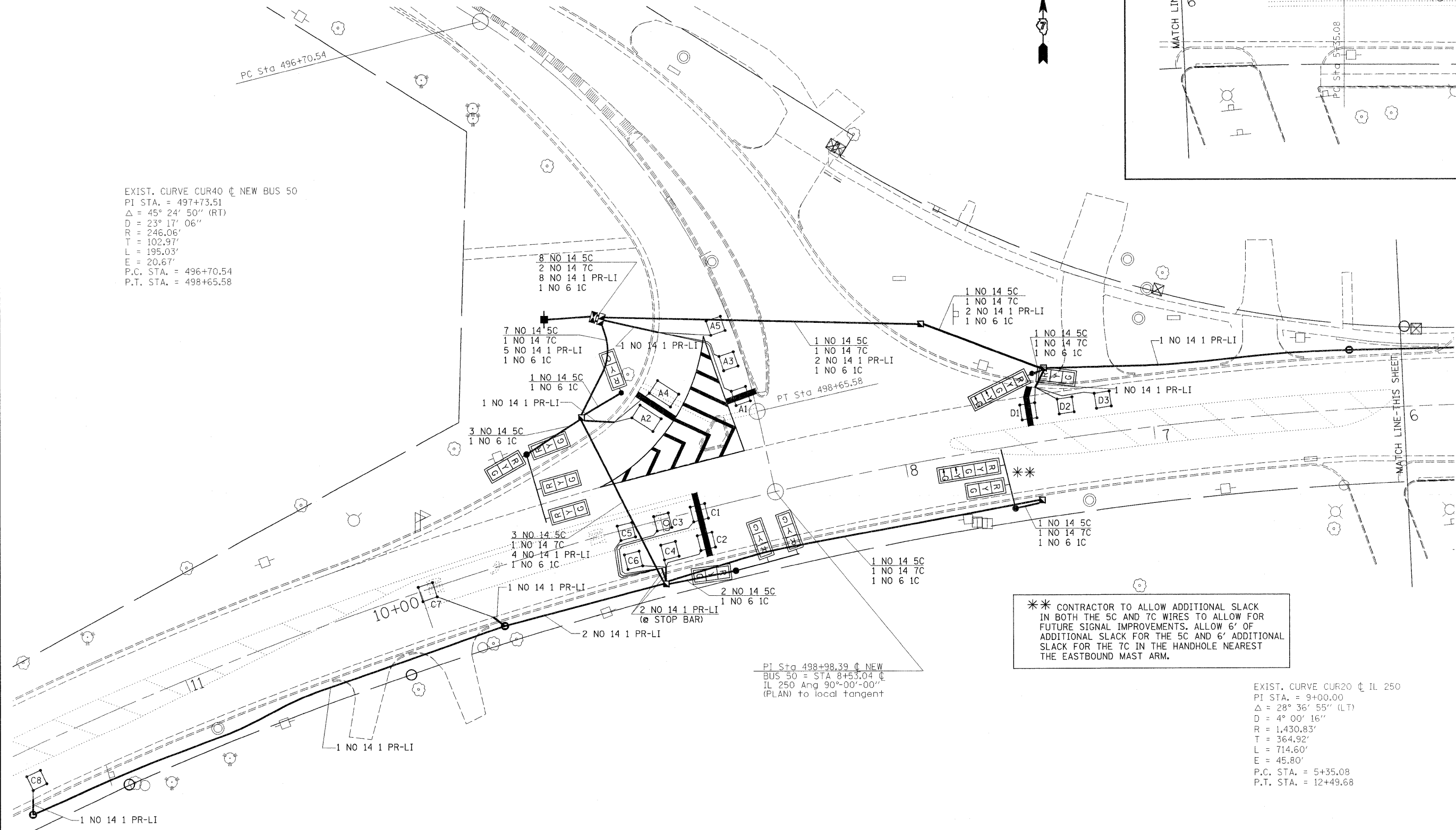


LOOP:	SIZE:	MODE:	QUADRA-POLE:	DELAY:
A1,A3,A5, C1,C3,C5,C2,C4,C6, D1,D2,D3	6' X 6'	NORMAL	NO	0
C7,C8,D4	6' X 6'	EXTENDED	NO	0
A2,A4	6' X 10'	DELAY	NO	15

THE FOLLOWING CABLES SHALL BE WIRED TO COMMON AMPLIFIERS:  
 (A1, A3, A5), (A2, A4),  
 (C1, C3, C5), (C2, C4, C6),  
 (C7), (C8),  
 (D1, D2, D3), (D4),  
 8 AMPLIFIERS PLUS 2 ADDITIONAL  
 TOTAL 10 AMPLIFIERS



EXIST. CURVE CUR40 @ NEW BUS 50  
 PI STA. = 497+73.51  
 $\Delta = 45^\circ 24' 50''$  (RT)  
 $D = 23^\circ 17' 06''$   
 $R = 246.06'$   
 $T = 102.97'$   
 $L = 195.03'$   
 $E = 20.67'$   
 P.C. STA. = 496+70.54  
 P.T. STA. = 498+65.58



PI Sta 498+98.39 @ NEW  
 BUS 50 = STA 8+53.04 @  
 IL 250 Ang 90°-00'-00''  
 (PLAN) to local tangent

\*\* CONTRACTOR TO ALLOW ADDITIONAL SLACK  
 IN BOTH THE 5C AND 7C WIRES TO ALLOW FOR  
 FUTURE SIGNAL IMPROVEMENTS. ALLOW 6' OF  
 ADDITIONAL SLACK FOR THE 5C AND 6' ADDITIONAL  
 SLACK FOR THE 7C IN THE HANDHOLE NEAREST  
 THE EASTBOUND MAST ARM.

EXIST. CURVE CUR20 @ IL 250  
 PI STA. = 9+00.00  
 $\Delta = 28^\circ 36' 55''$  (LT)  
 $D = 4^\circ 00' 16''$   
 $R = 1,430.83'$   
 $T = 364.92'$   
 $L = 714.60'$   
 $E = 45.80'$   
 P.C. STA. = 5+35.08  
 P.T. STA. = 12+49.68

FILE NAME =	USER NAME = mcolellonia
c:\pwork\pwork\mcolellonia\0196565\0774480-15-sht.dgn	
PLOT SCALE = 20.0000" / IN.	
PLOT DATE = 12/30/2010	

DESIGNED -	REVISED -
DRAWN -	REVISED -
CHECKED -	REVISED -
DATE -	REVISED -

**STATE OF ILLINOIS  
 DEPARTMENT OF TRANSPORTATION**

SCALE:	SHEET NO. OF SHEETS	STA. TO STA.

F.A.S. RTE. 1809	SECTION (22)TS-1	COUNTY LAWRENCE	TOTAL SHEETS 12	SHEET NO. 7
CONTRACT NO. 74480				
ILLINOIS FED. AID PROJECT				