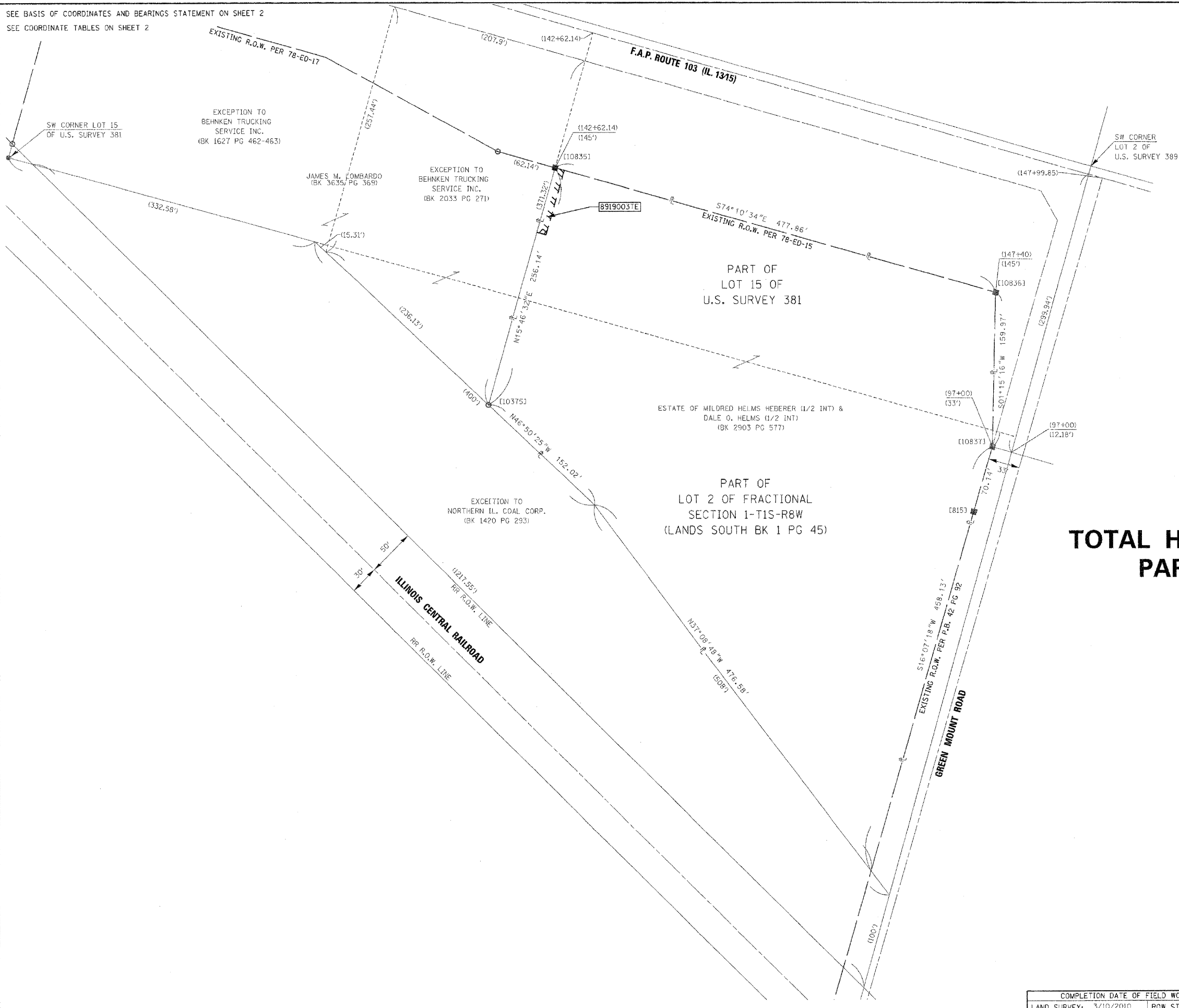


PART OF LOT 15 OF U.S. SURVEY 381, & PART OF LOT 2 OF SECTION 1, T1S, R8W, OF THE 3RD PM, ST. CLAIR COUNTY, ILLINOIS

SEE BASIS OF COORDINATES AND BEARINGS STATEMENT ON SHEET 2
SEE COORDINATE TABLES ON SHEET 2



SPACE RESERVED FOR RECORDING OFFICER



**TOTAL HOLDINGS SKETCH
PARCEL 8919003**

ASSOCIATED PROFESSIONALS, INC.
17825 Mockingbird Road, P.O. Box 311
Nashville, Illinois 62263
Ph. 618-478-9000 Fax 618-478-9001
web: www.apisurvey.com
IDPR Design Firm License No. 184-001803

ILLINOIS DEPARTMENT OF TRANSPORTATION
PLAT OF HIGHWAYS
FAP ROUTE 103 (IL 13/15)
SECTION 27-1-N
ST. CLAIR COUNTY
JOB NO. R-98-019-09
TOTAL HOLDING SKETCH

SCALE: 1" = 60'

ILLINOIS DEPARTMENT OF TRANSPORTATION
DIVISION OF HIGHWAYS/REGION 5/DISTRICT 8
1102 EASTPORT PLAZA DRIVE
COLLINSVILLE, ILLINOIS 62234-6198

F.A.P. RTE.	SECTION	COUNTY	TOTAL SHEETS	SHEET NO.
103	27-1-N	ST. CLAIR	50	36

CONTRACT NO. 76D15

COMPLETION DATE OF FIELD WORK PERFORMED
LAND SURVEY: 3/10/2010 ROW STAKING: