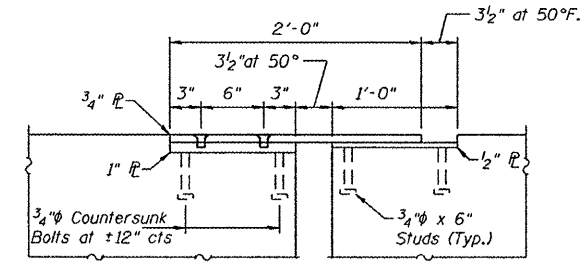


FINGER PLATE ELEVATION (SECTION F-F)  
(Looking East)



PARAPET SLIDING R DETAIL

See sheet 6 of 11  
for Section D-D.

DESIGNED - J. Uehle  
CHECKED - A. Holloway  
DRAWN - J. Uehle  
CHECKED - A. Holloway

EXAMINED *John F. Schuff*  
ENGINEER OF STRUCTURAL SERVICES  
DATE - March 11, 2011  
PASSED

STATE OF ILLINOIS  
DEPARTMENT OF TRANSPORTATION

FINGER PLATE ELEVATION  
SN 082-0198  
SHEET NO. 5 OF 11 SHEETS

F.A.P. RTE.	SECTION	COUNTY	TOTAL SHEETS	SHEET NO.
103	561-B-1	ST. CLAIR	21	12
CONTRACT NO. 76E20				
ILLINOIS FED. AID PROJECT				