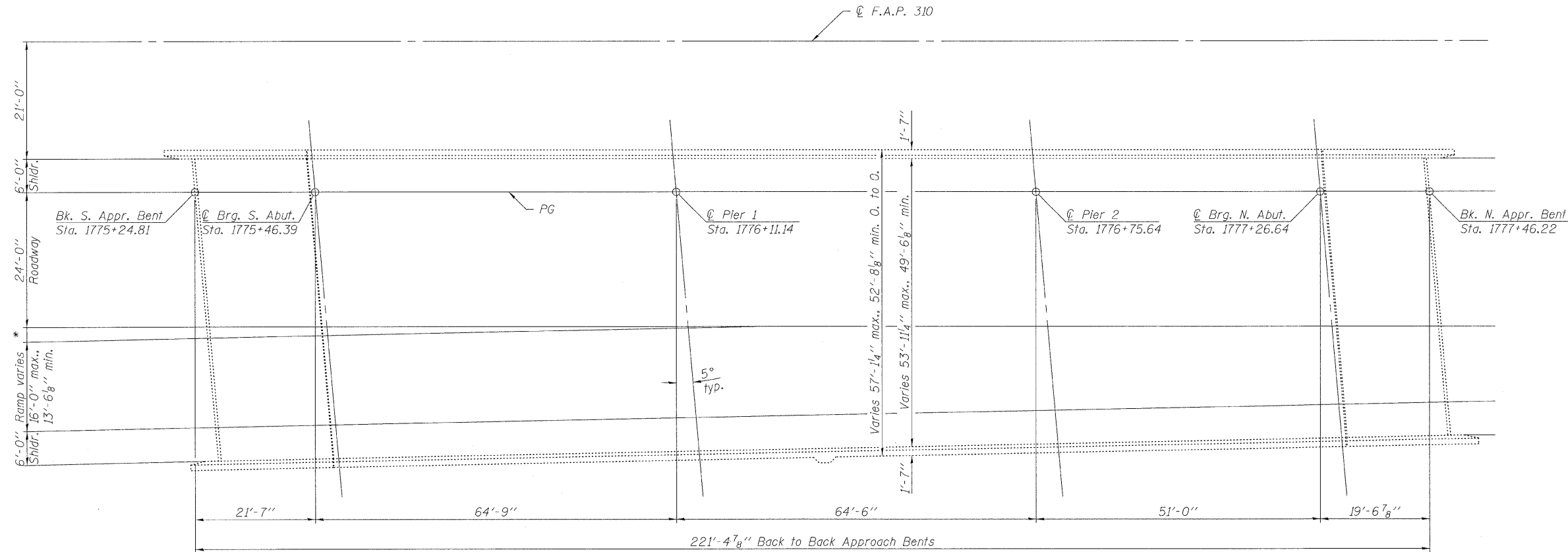


STATE OF ILLINOIS  
DEPARTMENT OF TRANSPORTATION

**GENERAL NOTES**

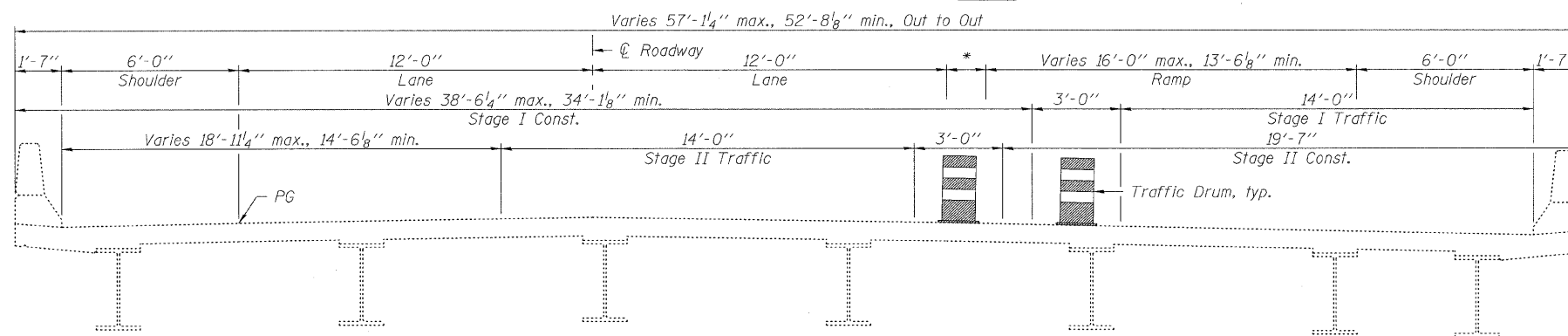
A Concrete Sealer shall be applied to the surfaces of the deck and parapets. See Special Provisions for Bridge Deck Concrete Sealer.

Existing pavement markings shall be temporarily covered prior to application of the deck surface treatment, to prevent the material from being applied over the markings. The temporary covering shall be removed after the application of the deck surface treatment and prior to opening to traffic. Cost included with Concrete Sealer.



\* 1'-11 3/4" max., 0'-0" min.

**PLAN**



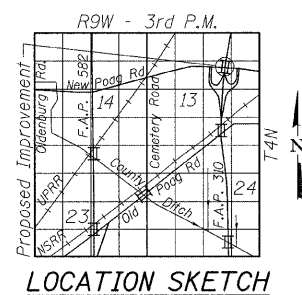
**CROSS SECTION**  
(Looking North)

**TOTAL BILL OF MATERIAL**

| ITEM            | UNIT    | SUPER  | SUB | TOTAL  |
|-----------------|---------|--------|-----|--------|
| Concrete Sealer | Sq. Ft. | 13,080 |     | 13,080 |

**GENERAL PLAN**  
**ILLINOIS ROUTE 255 OVER**  
**NEW POAG ROAD**  
**F.A.P. RTE. 310**  
**SEC. DIST. 8 BRIDGE DECK 2011-2**  
**MADISON COUNTY**  
**STATION 1776+08.78**  
**STRUCTURE NO. 060-0276 (N.B.)**

|          |     |
|----------|-----|
| DESIGNED | --- |
| CHECKED  | --- |
| DRAWN    | KAK |
| CHECKED  | EML |



**LOCATION SKETCH**

**HORNER & SHIFRIN, INC.**  
**ENGINEERS**

|                         |   |                                      |                   |                    |                 |
|-------------------------|---|--------------------------------------|-------------------|--------------------|-----------------|
| SHEET NO. 1<br>1 SHEETS | F.A.P. RTE.<br>310                              | SECTION<br>DIST 8 BRIDGE DECK 2011-2 | COUNTY<br>MADISON | TOTAL SHEETS<br>29 | SHEET NO.<br>10 |
|                         | CONTRACT NO. 76E42<br>ILLINOIS FED. AID PROJECT |                                      |                   |                    |                 |