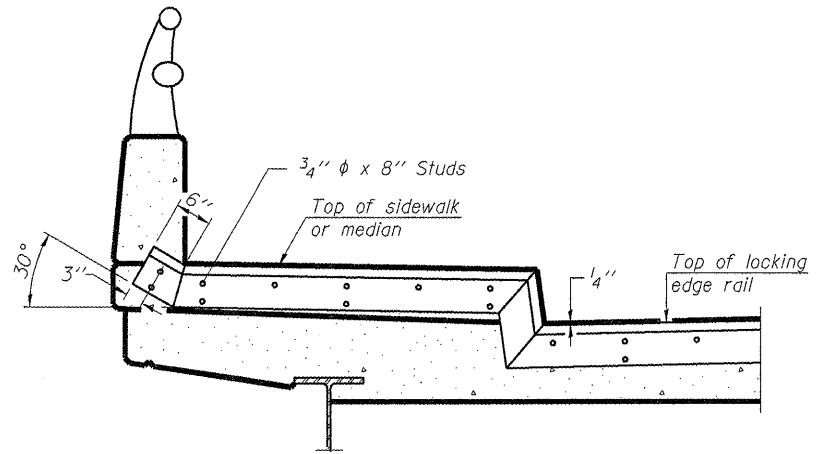
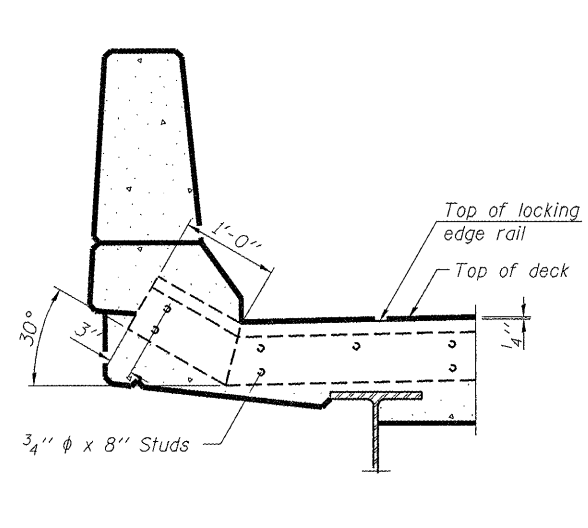


**SECTION C-C**

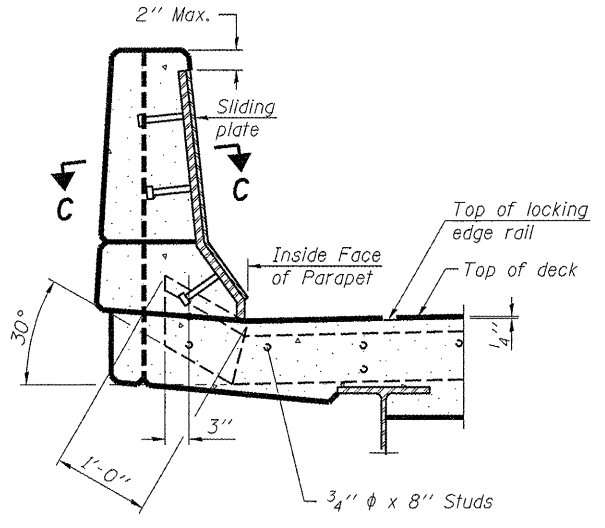


**TYPICAL END TREATMENT AT SIDEWALK OR MEDIAN**

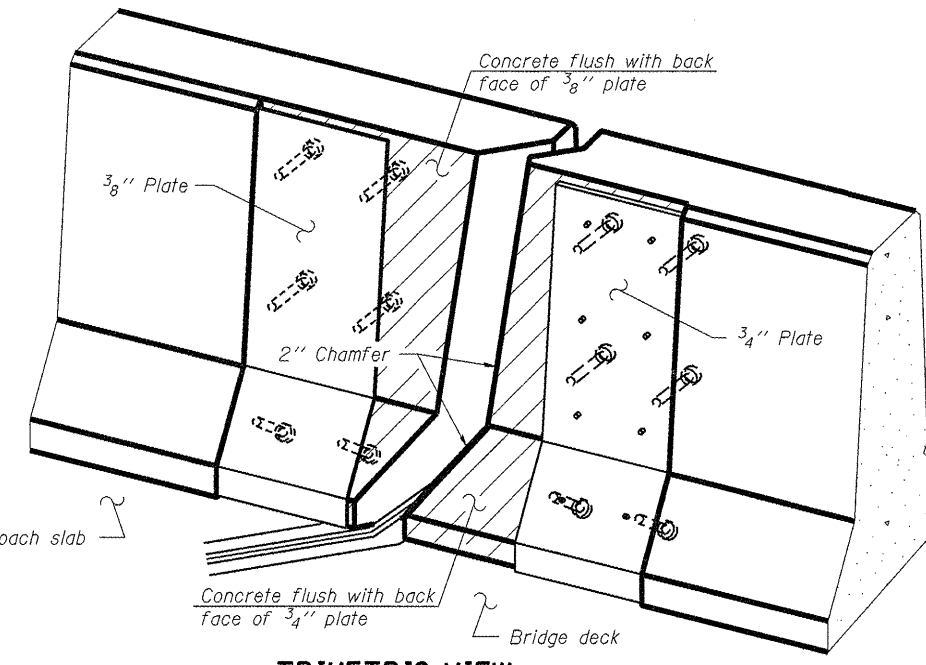
Shorter plates with a single row of studs at 12" cts. may be necessary on medians which are shallower than 9". See manufacturer's recommendation.



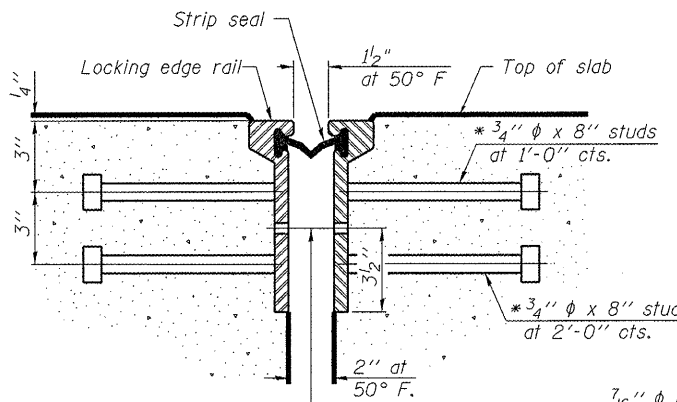
**SECTION A-A**



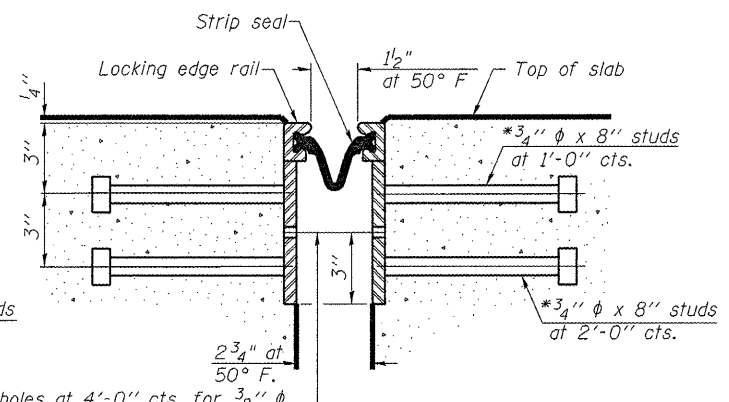
**SECTION B-B**



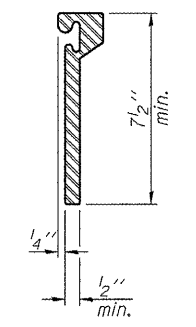
**TRIMETRIC VIEW (Showing back plates only)**



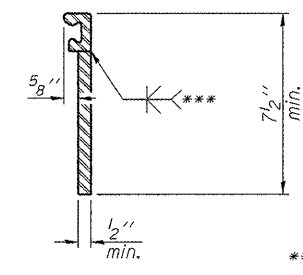
**SECTION THRU ROLLED RAIL JOINT**



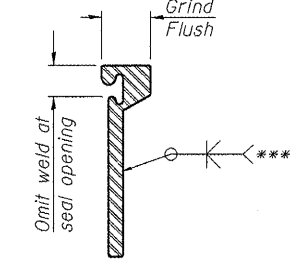
**SECTION THRU WELDED RAIL JOINT**



**ROLLED EXTRUDED RAIL**



**WELDED RAIL**



**LOCKING EDGE RAIL SPLICE**

The inside of the locking edge rail groove shall be free of weld residue.  
Rolled rail shown, welded rail similar.

**LOCKING EDGE RAILS**

**BILL OF MATERIAL**

| Item                       | Unit | Total |
|----------------------------|------|-------|
| Preformed Joint Strip Seal | Foot | 66    |

\* Granular or solid flux filled headed studs conforming to Article 1006.32 of the Std. Specs., automatically end welded.

| RTE.  | SECTION                    | SHEETS             | SHEET NO. |
|---|----------------------------|--------------------|-----------|
| •   | D9 CM BRIDGE REPAIR 2011-2 | JEFFERSON          | 24 20     |
| •F.A.S. 2869 & F.A.I. 57                        |                            | CONTRACT NO. 78233 |           |
| FED. ROAD DIST. NO. - ILLINOIS FED. AID PROJECT |                            |                    |           |