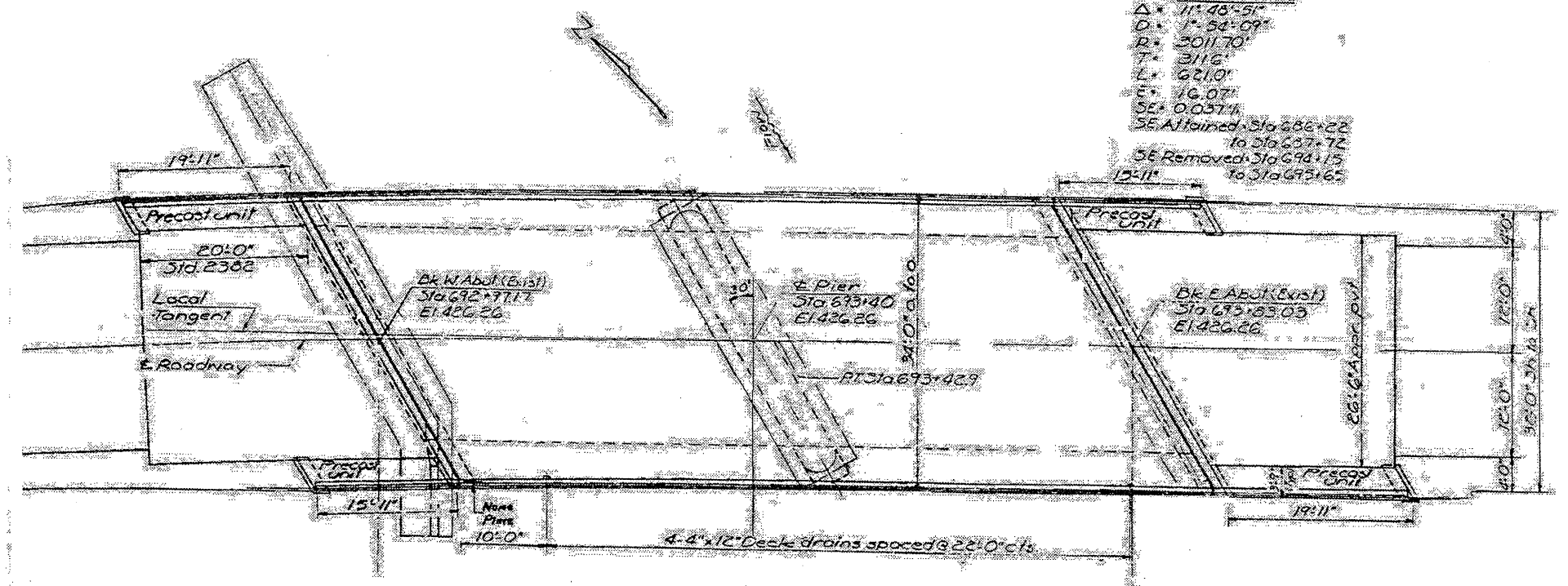


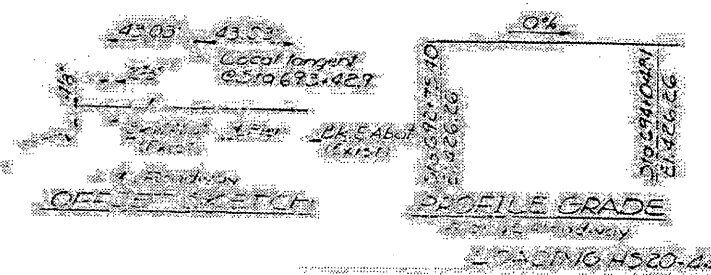
ELEVATION

HORIC. CURVE DATA
 F.A. R6773
 $\Delta = 111^{\circ} 48' 51''$
 $D = 1^{\circ} 54' 09''$
 $R = 3011.70'$
 $T = 311.6'$
 $L = 621.0'$
 $E = 16.07'$
 $SE = 0.0571$
 SE Attained Sta 682+22 to Sta 687+72
 SE Removed Sta 694+15 to Sta 693+65



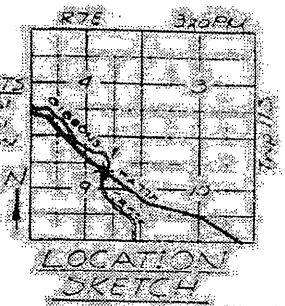
PLAN

STATION 693+40
 REBUILT 1991 BY
 STATE OF ILLINOIS
 F.A. RT. 173 SEC. 3B-BR
 PROJ. ER-1-118(C)
 LOADING HS20



DESIGN STRESSES
 $f_c = 3500 \text{ psi (Sub)}$
 $f_y = 60,000 \text{ psi (Reinf)}$
 $f_y = 50,000 \text{ psi (Structural Steel)}$
 Except as noted.
 Main reinforcement in the top layer of the deck shall be epoxy coated.
 Allow 25% for future wearing surface.
 Design Specifications 1977 ASD
 10.10, 10.11, 10.12, 10.13, 10.14, 10.15

PRECAST UNITS
 $f_c = 4500 \text{ psi}$
 $f_y = 1800 \text{ psi}$
 $f_y = 20,000 \text{ psi}$



STRUCTURE 076-0001

FILE NAME =	USER NAME = gautneyrk	DESIGNED -	REVISED -	STATE OF ILLINOIS DEPARTMENT OF TRANSPORTATION	SCALE: _____	SHEET NO. _____ OF _____ SHEETS	STA. _____ TO STA. _____	RTE.	SECTION	COUNTY	TOTAL SHEETS	SHEET NO.	
		DRAWN -	REVISED -					VAR. D9 BRIDGE PAINTING 2011-1	VARIOUS	ILLINOIS	12	11	
		CHECKED -	REVISED -										CONTRACT NO. 78139
		DATE -	REVISED -										ILLINOIS FED. AID PROJECT