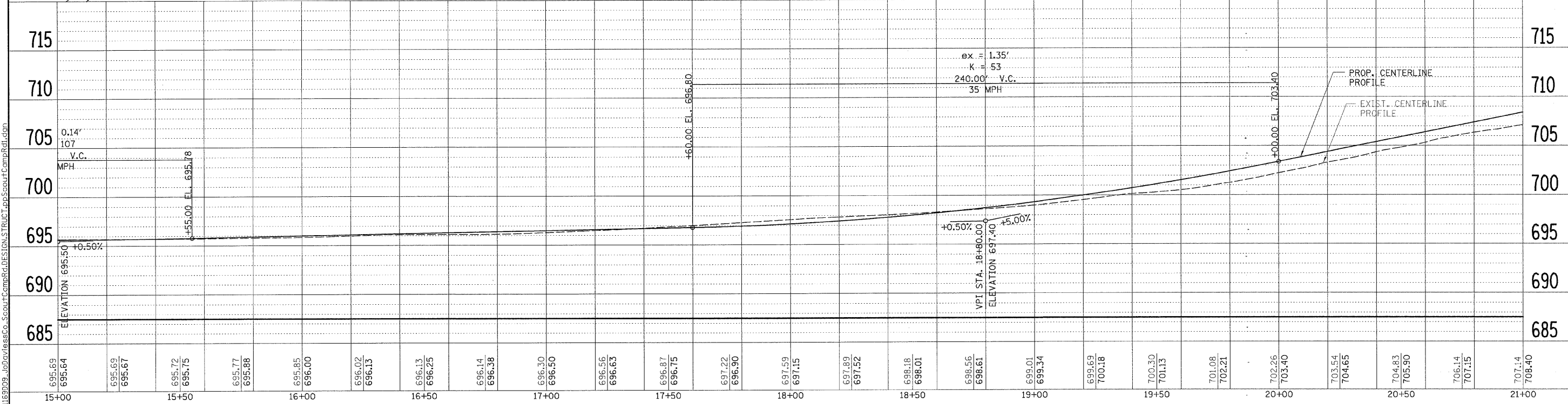
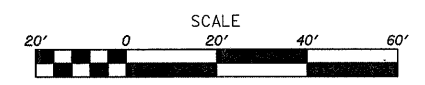


PROPERTY OWNER:
WILLIAM C. DZIERZYNSKI

PROP. CURVE CURVE1
 PI STA. = 24+44.69
 $\Delta = 137^\circ 30' 50''$ (RT)
 $D = 11^\circ 27' 33''$
 $R = 500.00'$
 $T = 1,286.21'$
 $L = 1,200.03'$
 $E = 879.98'$
 $e = 3.9\%$
 $T.R. = 36'$
 $S.E. RUN = 69'$
 $P.C. STA = 11+58.48$
 $P.T. STA = 23+58.52$

BENCH MARK:
RR SPIKE IN WOOD GATE POST
RT. @ STA 17+10, EL 692.69

NOTE:
4" PVT MK EDGE LINES (WHT)
NOT SHOWN. SEE SCHEDULES
FOR QUANTITIES.



REV.	DATE	BY	REMARKS

DRAWN
X.X.X.
CHECKED
X.X.X.
APPROVED
X.X.X.

**JO DAVIESS COUNTY
SCOUT CAMP ROAD AND
WELCH ROAD IMPROVEMENTS**

**WILLET,
HOFMANN &
ASSOCIATES, INC.**
CONSULTING ENGINEERS
Land Surveying - Transportation - Structural
Environmental - Architecture
808 East Second Street Dixon, Illinois 61021
Phone 815-294-3381 Fax 815-294-3385
Design Firm #184-000918
www.willettthofmann.com

F.A.S. 73
FED. AID PROJECT -
FED. ROAD DIST. NO. 7 ILLINOIS

**SCOUT CAMP ROAD
PLAN & PROFILE**
STA. 15 + 00.00 - STA. 21 + 43.50

SECTION	COUNTY	TOTAL SHEETS	SHEET NO.
09-00133-00-BR	JO DAVIESS	48	12
STA. 15+00.00 - STA. 21+43.50			
WHA PROJECT: 1169009		DATE: XX/XX/XXXX	

FILE = S:\PROJECTS\2009\1169009\JO Daviess Co. Scout Camp Rd.DESIGN\STRUCTURE\ScoutCampRd.dwg