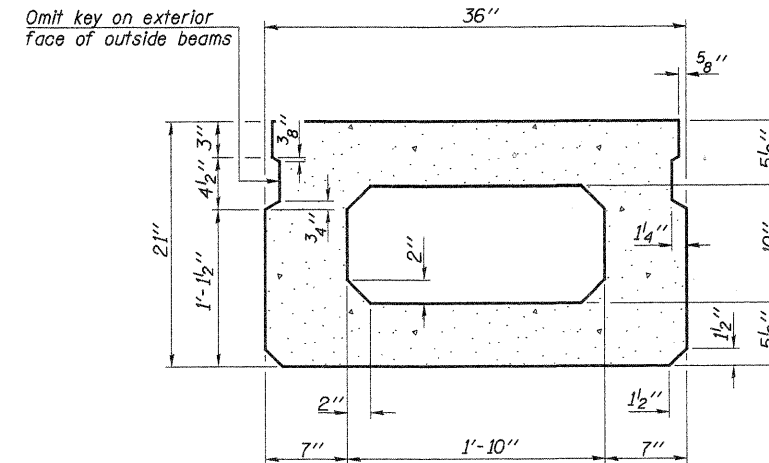
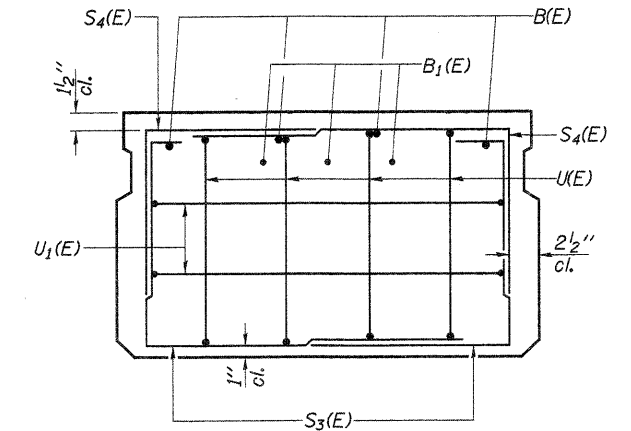


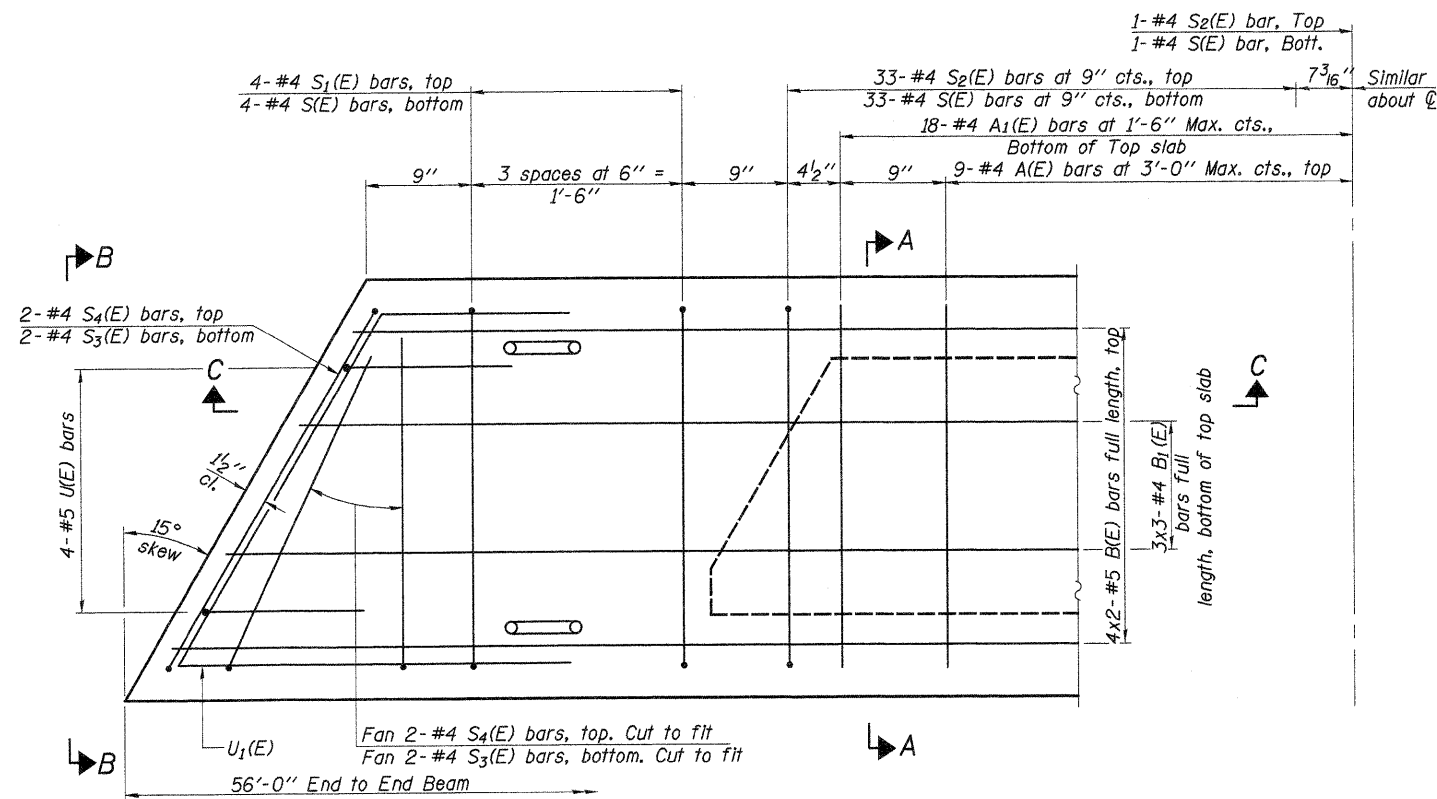
SECTION C-C



SECTION A-A
(Showing dimensions)

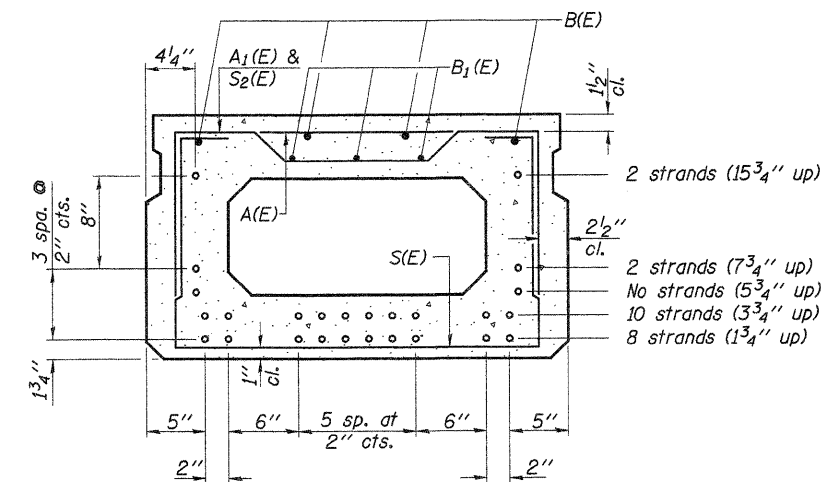


VIEW B-B



PLAN VIEW

Note: Spacing of S(E) and S2(E) bars may be adjusted up to 4" in the immediate area of the transverse tie diaphragms to miss the block-outs for the transverse ties.
Bars indicated thus 4x2-#5 etc., indicates 4 lines of bars with 2 lengths per line.



Use 22-1/2" φ strands at the locations shown.

SECTION A-A

(Showing reinforcement and permissible strand locations)

Note: Place the number of strands specified in each row symmetrically about the centerline of beam in the permissible strand locations shown.

MIN. BAR LAPS

- #4 2'-0"
- #5 2'-6"

BAR LIST
ONE BEAM ONLY
(For information only)

Bar	No.	Size	Length	Shape
A(E)	17	#4	2'-7"	—
A1(E)	35	#4	2'-10"	—
B(E)	8	#5	29'-3"	—
B1(E)	9	#4	20'-0"	—
S(E)	75	#4	6'-5"	—
S1(E)	8	#4	4'-11"	—
S2(E)	67	#4	5'-2"	—
S3(E)	8	#4	4'-7"	—
S4(E)	8	#4	3'-10"	—
UK(E)	8	#5	4'-0"	—
U1(E)	4	#4	5'-9"	—

Note: See sheet 7 for additional details and Bill of Material.
Reinforcement bars designated (E) shall be epoxy coated.

21" X 36" PPC DECK BEAM

S.N. 038-4751 ****06-02148-00-BR
06-18148-00-BR

DESIGNED -	A.L.S.
CHECKED -	A.R.K.
DRAWN -	S.A.P.
CHECKED -	A.R.K. & A.L.S.

PDB-2136-L

9-29-09

F EHR-GRAHAM & ASSOCIATES, LLC
ENGINEERING AND SCIENCE CONSULTANTS
FREEPORT, IL ROCKFORD, IL ROCHELLE, IL MONROE, WI SPRINGFIELD, IL
4440 ASH GROVE SPRINGFIELD, IL 62711 (217)-793-9600 www.fehr-graham.com

TWP. RTE.	SECTION	COUNTY	TOTAL SHEETS	SHEET NO.
228	****	IROQUOIS	19	6
BROS-075 (137)		CONTRACT NO. 87446		
ROAD DISTRICT	ILLINOIS	ASH GROVE/MILFORD		