

CATHERINE E. BUTLER

NOTES:

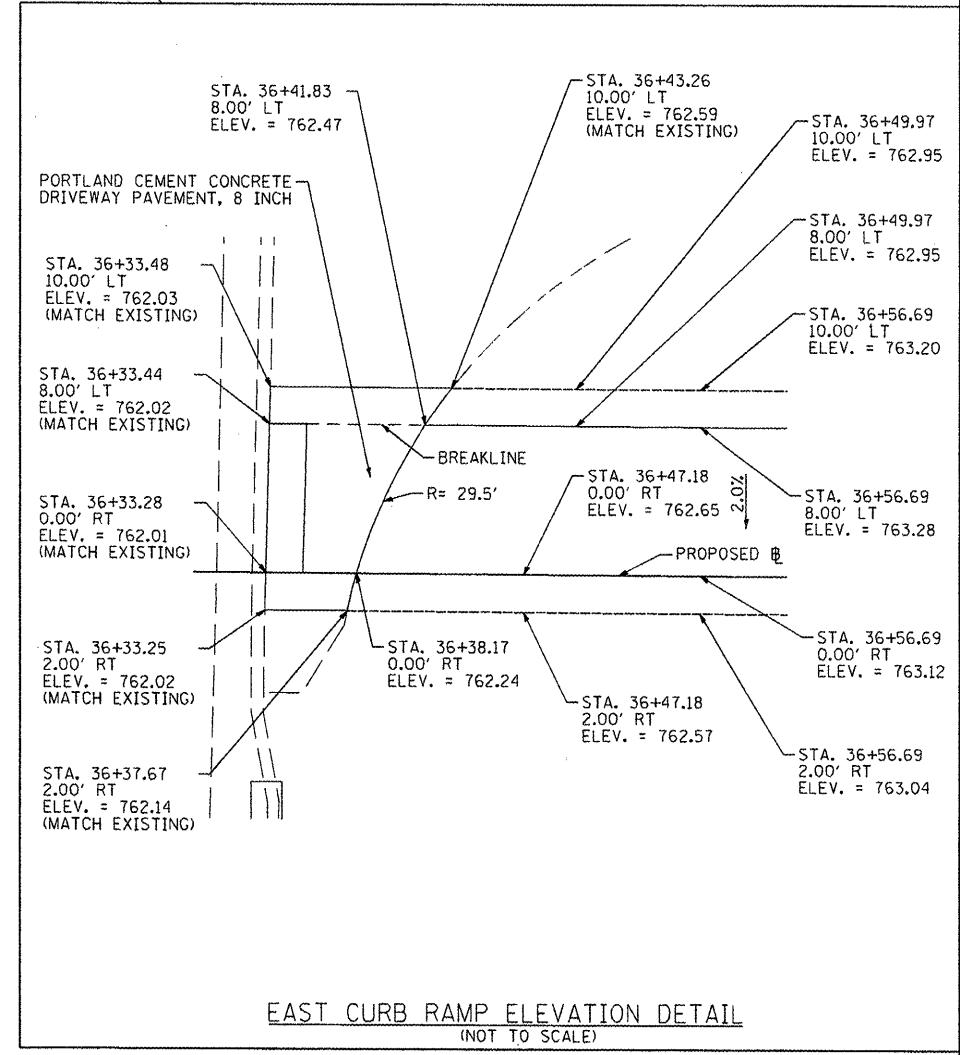
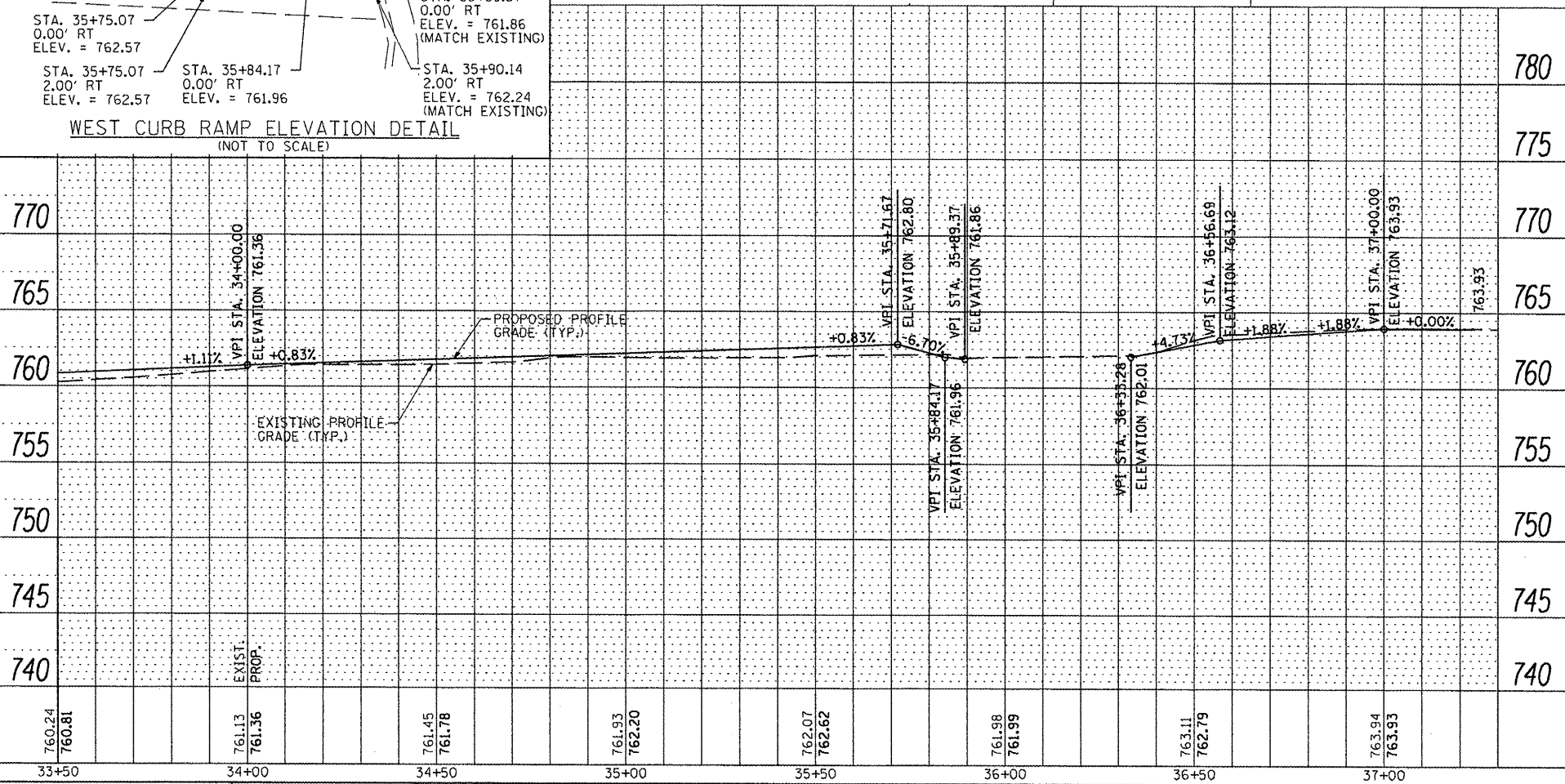
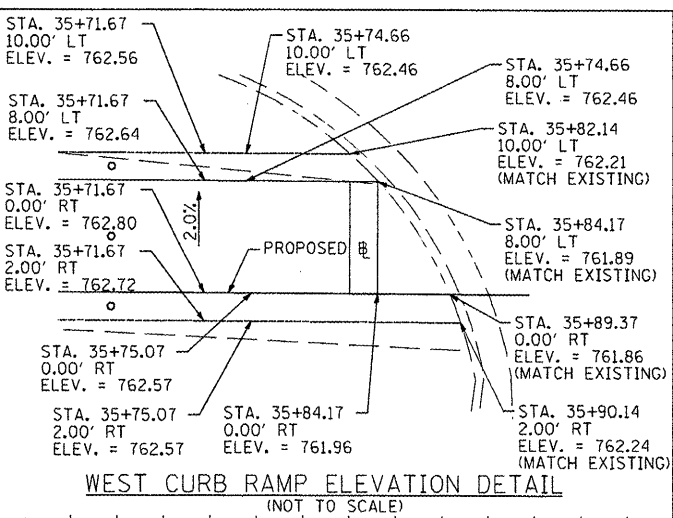
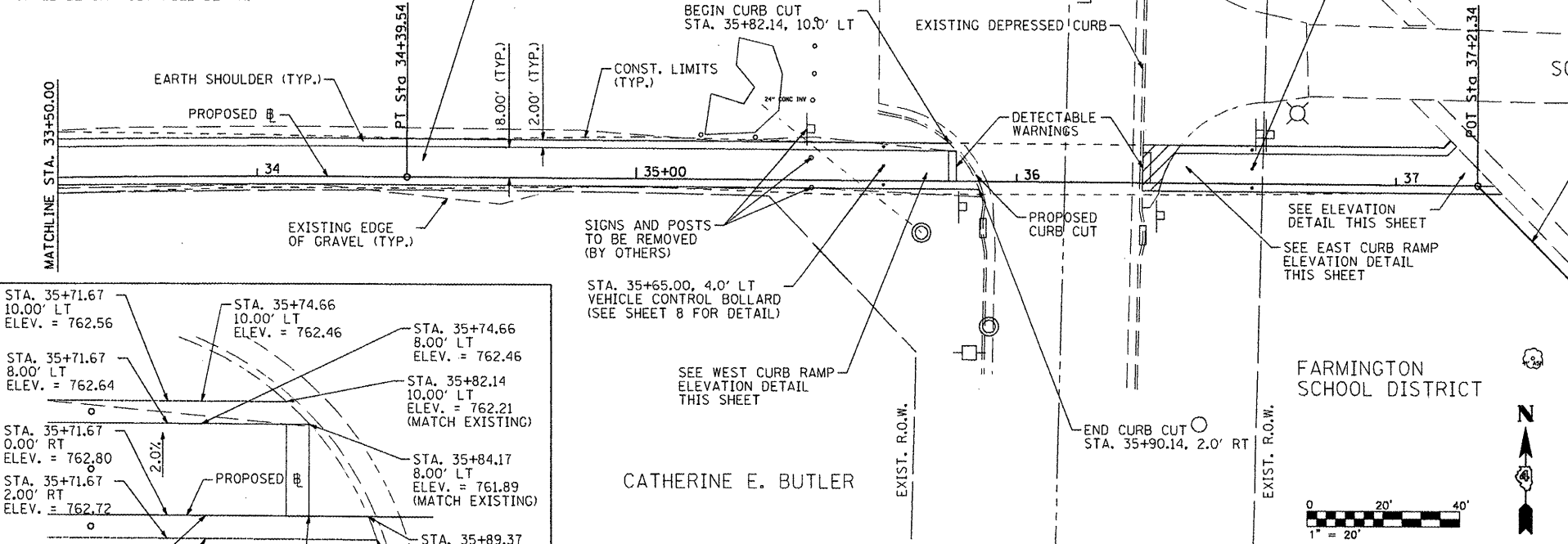
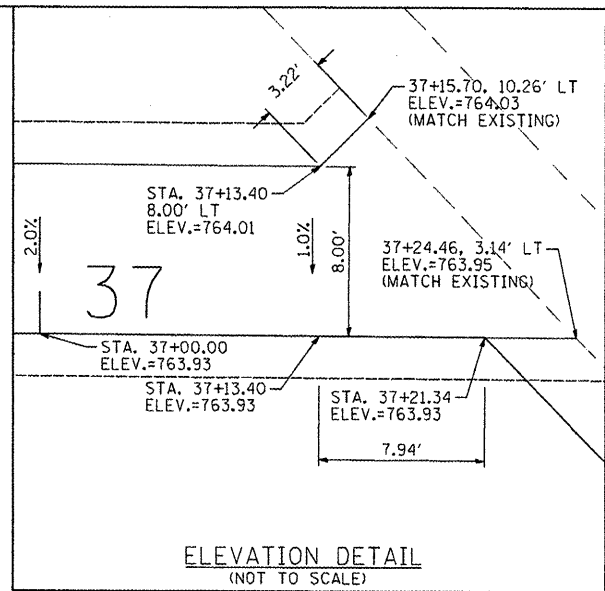
- CROSS WALK STRIPING ALREADY EXISTS ACROSS LIGHTFOOT RD. THE EXISTING STRIPING WILL REMAIN AND NEW STRIPING WILL NOT BE PLACED.
- THE LIMITS OF THE DRIVEWAY PAVEMENT REMOVAL SHALL BE SAW CUT FULL DEPTH.

HOT-MIX ASPHALT SURFACE COURSE, MIX "C", N30 (TYP.)

LEGEND

DRIVEWAY PAVEMENT REMOVAL

FARMINGTON SCHOOL DISTRICT



PLAN

DATE	
BY	
REVISIONS	
NO.	
DESCRIPTION	

PROFILE

DATE	
BY	
REVISIONS	
NO.	
DESCRIPTION	

FILE NAME = S:\247\24718001 Farmington SR15\CA00\DCAD	USER NAME = jdsptiller	DESIGNED - JDS	REVISED -
	Sheets\0489569-sht-planprof5.DGN	DRAWN - WLL	REVISED -
	PLOT SCALE = 48.0000" / IN.	CHECKED - GBM	REVISED -
	PLOT DATE = 1/13/2011	DATE -	REVISED -

STATE OF ILLINOIS
DEPARTMENT OF TRANSPORTATION

CITY OF FARMINGTON SR15
PLAN AND PROFILE

SCALE: SHEET NO. OF SHEETS STA. TO STA.

SECTION	COUNTY	TOTAL SHEETS	SHEET NO.
08-00032-00-SW	FULTON	13	7
		CONTRACT NO. 89569	
ILLINOIS FED. AID PROJECT			