

F.A. RTE.	SECTION	COUNTY	TOTAL SHEETS	SHEET NO.
	08-00032-00-SW	FULTON	13	1
ILLINOIS		CONTRACT NO. 89569		

**INDEX OF SHEETS**

- 1 COVER SHEET
- 2 GENERAL NOTES, SUMMARY OF QUANTITIES, SCHEDULE OF QUANTITIES
- 3 TYPICAL SECTIONS
- 4 ALIGNMENT, TIES, AND BENCHMARKS
- 5-7 PLAN AND PROFILE
- 8 VEHICLE CONTROL BOLLARD DETAIL
- 9-13 CROSS SECTIONS

**HIGHWAY STANDARDS**

- 000001-06 STANDARD SYMBOLS, ABBREVIATIONS AND PATTERNS
- 001006 DECIMAL OF AN INCH AND OF A FOOT
- 424001-05 CURB RAMPS FOR SIDEWALKS
- 606001-04 CONCRETE CURB TYPE B AND COMBINATION CONCRETE CURB AND GUTTER
- 701001-02 OFF-RD OPERATIONS, 2L, 2W, MORE THAN 15' (4.5m) AWAY
- 701006-03 OFF-RD OPERATIONS, 2L, 2W, 15' (4.5m) TO 24" (600 mm) FROM PAVEMENT EDGE
- 701011-02 OFF-RD MOVING OPERATIONS, 2L, 2W, DAY ONLY
- 701301-04 LANE CLOSURE, 2L, 2W, SHORT TIME OPERATIONS
- 701501-06 URBAN LANE CLOSURE, 2L, 2W, UNDIVIDED
- 701901-01 TRAFFIC CONTROL DEVICES

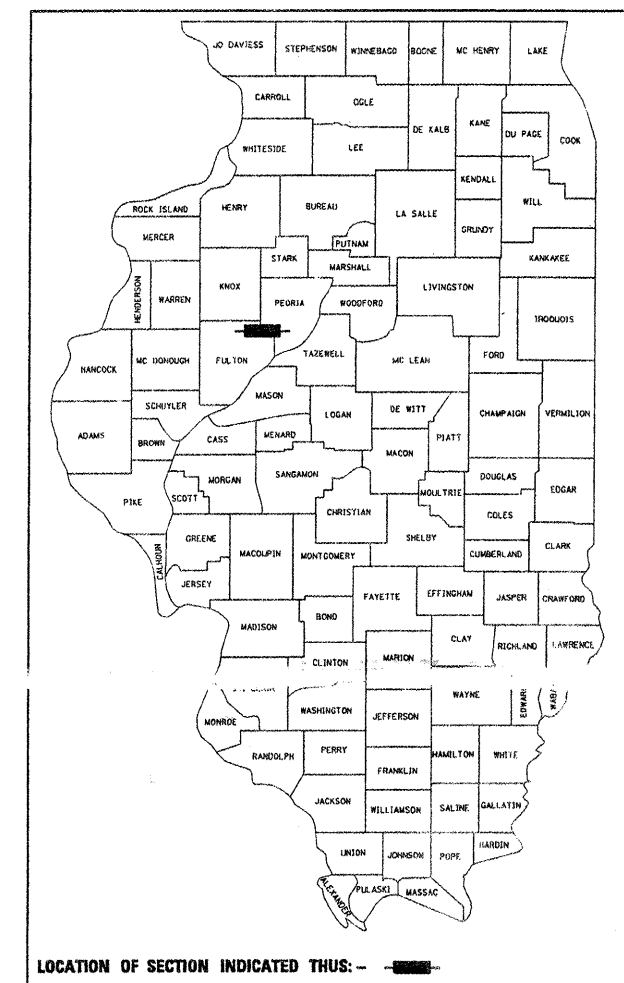
**STATE OF ILLINOIS  
DEPARTMENT OF TRANSPORTATION**

**SAFE ROUTES TO SCHOOL**

**PROPOSED  
HIGHWAY PLANS  
FOR LOCAL IMPROVEMENT**

**WILSON STREET  
CITY OF FARMINGTON  
SECTION 08-00032-00-SW  
PROJECT SRTS-4008(090)  
FULTON / PEORIA COUNTIES  
JOB NO. C-40-033-08**

PROJECT DESCRIPTION: CONSTRUCTION OF MULTI-USE  
PATH FROM JACOB'S PARK TO FARMINGTON SCHOOL



**ENGINEERS SIGNATURE BOX**

**JEFFRY D. SPILLER**  
062-057630  
LICENSED PROFESSIONAL ENGINEER OF ILLINOIS

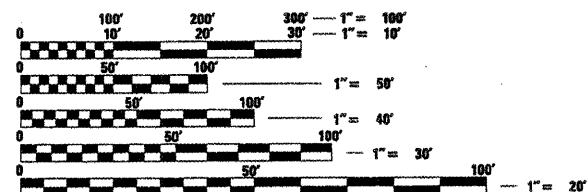
*Jeffrey D. Spiller*

DATE SIGNED: 12/29/10  
JEFFRY D. SPILLER, P.E.  
IL REG. NO. 062-057630  
EXP. DATE: 11/30/2011

PREPARED BY:



7615 NORTH HARKER DRIVE  
PEORIA, ILLINOIS 61615  
TEL 309-693-7615  
FAX 309-693-7616  
CONTACT: GEORGE MERKLE

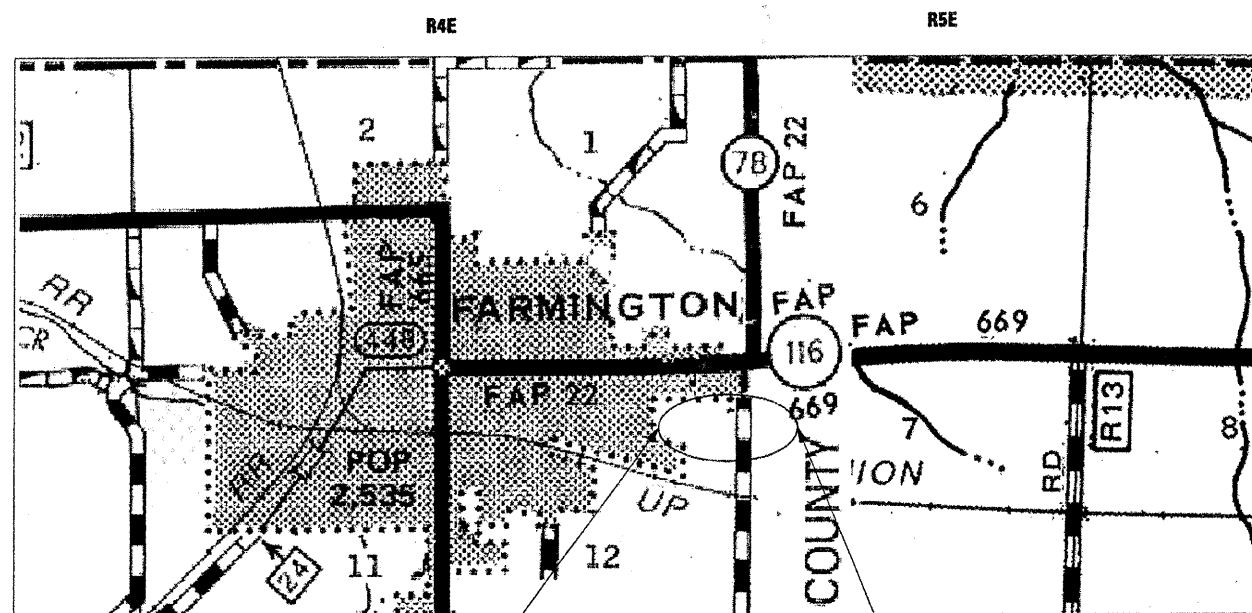


FULL SIZE PLANS HAVE BEEN PREPARED USING STANDARD ENGINEERING SCALES. REDUCED SIZED PLANS WILL NOT CONFORM TO STANDARD SCALES. IN MAKING MEASUREMENTS ON REDUCED PLANS, THE ABOVE SCALES MAY BE USED.

J.U.L.I.E.  
JOINT UTILITY LOCATION INFORMATION FOR EXCAVATION  
1-800-892-0123  
OR 811

PROJECT ENGINEER GEORGE MERKLE, P.E.  
PROJECT MANAGER RICK ANDERSON, P.E.

CONTRACT NO. 89569 CATALOG NO. 034403-00D



IMPROVEMENT BEGINS  
STA. 21 + 73.19

IMPROVEMENT ENDS  
STA. 37 + 21.34

GROSS LENGTH = 1548.15 FT. = 0.293 MILE  
NET LENGTH = 1499.35 FT. = 0.284 MILE

N  
T8N  
4th P.M.

STATE OF ILLINOIS  
DEPARTMENT OF TRANSPORTATION  
DIVISION OF HIGHWAYS

APPROVED 12/29 20 10  
*Cynthia Stobach*  
CITY OF FARMINGTON

PASSED 01/02 20 11  
*[Signature]*  
DISTRICT FOUR ENGINEER OF LOCAL ROADS AND STREETS

RELEASED FOR BID BASED ON LIMITED REVIEW  
JAN 8 20 11  
DEPUTY DIRECTOR OF HIGHWAYS, REGION THREE ENGINEER

**PRINTED BY THE AUTHORITY  
OF THE STATE OF ILLINOIS**

**GENERAL NOTES**

1. THE CONTRACTOR SHALL BE RESPONSIBLE FOR HAVING THE UTILITY COMPANIES LOCATE THEIR FACILITIES ON SITE PRIOR TO ANY CONSTRUCTION AND WILL BE HELD RESPONSIBLE FOR THE MAINTENANCE AND PRESERVATION OF THEIR FACILITIES. THE CONTRACTOR, ON SITE, SHALL DETERMINE THE EXACT LOCATIONS OF THE UTILITIES. THE CONTRACTOR SHALL CALL J.U.L.I.E. @ 1-800-892-0123 FOR UTILITY LOCATIONS.
2. THE CONTRACTOR WILL BE RESPONSIBLE FOR REPAIRS TO ANY UTILITY LINES AND EXISTING IMPROVEMENTS TO REMAIN THAT ARE DAMAGED AS A RESULT OF THE WORK.
3. ADJUSTMENTS OF PROPOSED GRADES TO MATCH EXISTING ENTRANCES OR OTHER FIELD CONDITIONS MAY BE REQUIRED AS DIRECTED BY THE ENGINEER.
4. ACCESS SHALL BE MAINTAINED TO ALL PROPERTIES DURING CONSTRUCTION.
5. THE WORK AREA SHALL BE POSITIVELY DRAINED DURING CONSTRUCTION, FINAL GRADES SHALL BE PROTECTED AGAINST DAMAGE FROM EROSION, SEDIMENTATION, AND TRAFFIC.
6. WHERE SECTION OR SUBSECTION MONUMENTS ARE ENCOUNTERED, THE ENGINEER SHALL BE NOTIFIED BEFORE SUCH MONUMENTS ARE REMOVED. THE CONTRACTOR SHALL PROTECT AND CAREFULLY PRESERVE ALL PROPERTY MARKERS AND MONUMENTS UNTIL THE OWNER, AN AUTHORIZED SURVEYOR OR AGENT HAS WITNESSED OR OTHERWISE REFERENCED THEIR LOCATION.
7. THE CONTRACTOR SHALL FIELD VERIFY ALL DIMENSIONS AND EXISTING CONDITIONS PRIOR TO CONSTRUCTION AND NOTIFY THE ENGINEER OF ANY DISCREPANCY IMMEDIATELY.
8. THE FOLLOWING MIXTURE REQUIREMENTS ARE APPLICABLE FOR THIS PROJECT:

MIXTURE USE(S):	MULTI-USE PATH
AC/PG:	PG 64-22
RAP % (MAX)	25%
DESIGN AIR VOIDS:	3.0% @ Ndes = 30
MIXTURE COMP: (GRADATION MIX)	IL 9.5L
FRICTION AGGREGATE:	MIXTURE C

••IF THE RAP OPTION IS SELECTED, THE ASPHALT CEMENT GRADE MAY NEED TO BE ADJUSTED; THIS WILL BE DETERMINED BY THE ENGINEER.

SUMMARY OF QUANTITIES		UNIT	SFTY-1B
CODE NO.	ITEM		TOTAL
20200100	EARTH EXCAVATION	CU YD	105
20400800	FURNISHED EXCAVATION	CU YD	12
25000200	SEEDING, CLASS 2	ACRE	0.3
25000400	NITROGEN FERTILIZER NUTRIENT	POUND	27
25000500	PHOSPHORUS FERTILIZER NUTRIENT	POUND	27
25000600	POTASSIUM FERTILIZER NUTRIENT	POUND	27
25100115	MULCH, METHOD 2	ACRE	0.3
35100100	AGGREGATE BASE COURSE, TYPE A	TON	254
40603305	HOT-MIX ASPHALT SURFACE COURSE, MIX "C", N30	TON	223
42300400	PORTLAND CEMENT CONCRETE DRIVEWAY PAVEMENT, 8 INCH	SO YD	7
42400800	DETECTABLE WARNINGS	SO FT	48
44000200	DRIVEWAY PAVEMENT REMOVAL	SO YD	9
67100100	MOBILIZATION	L SUM	1
X0322494	CURB CUT	FOOT	15
XX002202	VEHICLE CONTROL BOLLARDS	EACH	3

**SCHEDULE OF QUANTITIES**

35100100 AGGREGATE BASE COURSE, TYPE A	
LOCATION	TON
STA. 21+73.19 TO STA. 35+91.76	226.6
STA. 36+40.57 TO STA. 37+21.34	27.6
TOTAL	254.2

40603305 HOT-MIX ASPHALT SURFACE COURSE, MIX "C", N30	
LOCATION	TON
STA. 21+73.19 TO STA. 35+91.76	211.2
STA. 36+40.57 TO STA. 37+21.34	12.3
TOTAL	223.4

42300400 PORTLAND CEMENT CONCRETE DRIVEWAY PAVEMENT, 8 INCH	
LOCATION	SO YD
STA. 36+33.25 TO STA. 36+43.26	7.0
TOTAL	7.0

42400800 DETECTABLE WARNINGS	
LOCATION	SO FT
STA. 21+73.19 TO STA. 21+75.19	16
STA. 35+82.17 TO STA. 35+84.17	16
STA. 36+33.28 TO STA. 36+35.28	16
TOTAL	48

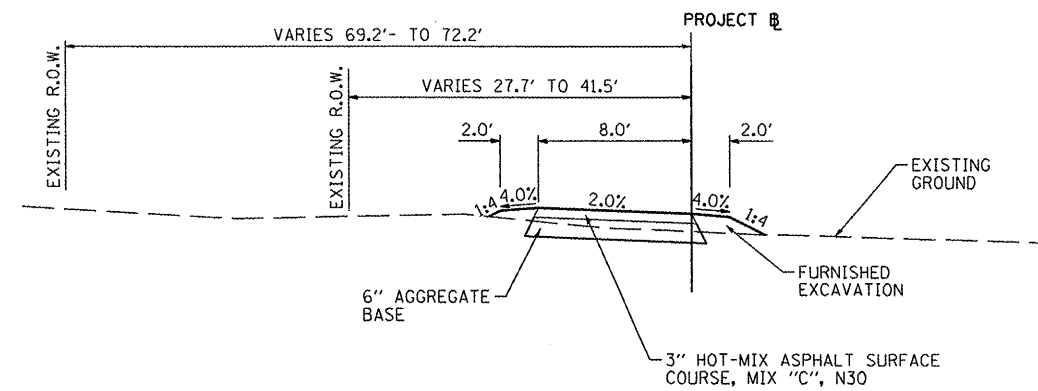
44000200 DRIVEWAY PAVEMENT REMOVAL	
LOCATION	SO YD
STA. 36+33.25 TO STA. 36+43.26	8.7
TOTAL	9

X0322494 CURB CUT	
LOCATION	FOOT
STA. 35+82.14, 10.0' LT TO STA. 35+90.14, 2.0' RT	14.6
TOTAL	14.6

XX002202 VEHICLE CONTROL BOLLARDS	
LOCATION	EACH
STA. 25+45.00	1
STA. 35+65.00	1
STA. 36+62.00	1
TOTAL	3

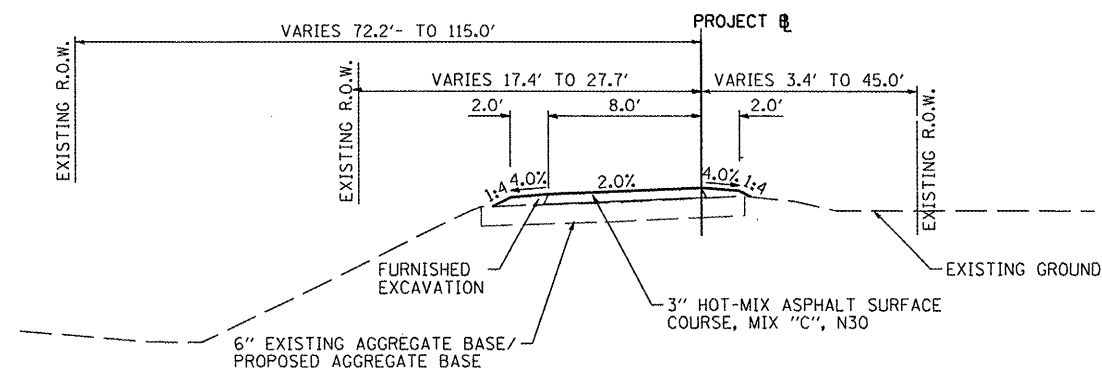
	20200100 EARTH EXCAVATION	EARTH EXCAVATION ADJUSTED FOR SHRINKAGE (25%)	EMBANKMENT	20400800 FURNISHED EXCAVATION
LOCATION	CU YD	CU YD	CU YD	CU YD
STA. 21+73.19 TO STA. 35+91.76	83.01	62.26	89.77	-27.51
STA. 36+40.57 TO STA. 37+21.34	21.60	16.20	0.17	16.03
TOTAL	104.61	78.46	89.94	11.48

	25000200 SEEDING, CLASS 2	25000400 NITROGEN FERTILIZER NUTRIENT	25000500 PHOSPHORUS FERTILIZER NUTRIENT	25000600 POTASSIUM FERTILIZER NUTRIENT	25100115 MULCH, METHOD 2
LOCATION	ACRE	POUND	POUND	POUND	ACRE
STA. 21+73.19 TO STA. 35+91.76	0.26	23.72	23.72	23.72	0.26
STA. 36+40.57 TO STA. 37+21.34	0.01	0.77	0.77	0.77	0.01
TOTAL	0.27	24.5	24.5	24.5	0.27



TYPICAL SECTION  
 STA. 21+73.19 TO STA. 24+00.00  
 STA. 36+38.17 TO STA. 37+21.34  
 (MULTI-USE PATH)

LIGHTFOOT RD.  
 OMISSION  
 STA. 35+89.37 TO STA. 36+38.17



TYPICAL SECTION  
 STA. 24+00.00 TO STA. 35+89.37  
 (MULTI-USE PATH)

FILE NAME =	USER NAME = wllwis	DESIGNED - JDS	REVISED -	<b>STATE OF ILLINOIS DEPARTMENT OF TRANSPORTATION</b>	<b>CITY OF FARMINGTON SRTS TYPICAL SECTION</b>	SECTION	COUNTY	TOTAL SHEETS	SHEET NO.
S:\247\24710001 Farmington SRTS\CADD\CADD Sheets\0489569-sh-typical.DGN	DRAWN - WLL	REVISED -	08-00032-00-SW			FULTON	13	3	
PLOT SCALE = 40,0000' / IN.	CHECKED - GBM	REVISED -	CONTRACT NO. 89569						
PLOT DATE = 12/20/2010	DATE -	REVISED -	SCALE:			SHEET NO.	OF SHEETS	STA. TO STA.	ILLINOIS FED. AID PROJECT

POINT	NORTHING	EASTING	ELEVATION	DESCRIPTION
1	1466974.0255	2346392.7957	762.4836	IRON ROD SET
2	1466770.0301	2346716.3365	764.9785	PK FOUND SW CORNER OF SCHOOL PARKING LOT
3	1466884.9415	2345030.1982	754.0295	IRON ROD SET ACROSS STREET FROM JACOB PARK - EAST EDGE ENTRANCE
4	1466856.1665	2344251.5958	747.1737	LARGE NAIL SET 5' NORTH OF POLE THAT IS 8TH POLE FROM N.W. CORNER OF JACOB PARK
5	1466853.1810	2344174.9869	747.4106	IRON ROD AND CAP FOUND N.W. CORNER JACOB PARK LATH - "PROP ROW. LINE FOR WILSON
6	1466903.4587	2343813.0818	743.3712	PK SET - CENTERLINE WILSON ST. APPROX. 4' EAST OF SIDEWALK ON WEST END OF JOB

Chain PATH\_1 contains:  
 WSW01 WSW02 WSW03 WSW04 WSW05 WSW06 WSW07 WSW08 WSW09 WSW10 PTH01 CUR PTH05  
 CUR PTH06 PTH08 ESW01 ESW02 CUR ESW01 ESW05 ESW06 ESW07 ESW08

Beginning chain PATH\_1 description  
 Point WSW01 N 1,466,884.1572 E 2,343,844.3078 Sta 10+00.00  
 Course from WSW01 to WSW02 S 88° 07' 21.14" E Dist 180.4984  
 Point WSW02 N 1,466,878.2437 E 2,344,024.7093 Sta 11+80.50  
 Course from WSW02 to WSW03 S 86° 42' 01.38" E Dist 49.2754  
 Point WSW03 N 1,466,875.4075 E 2,344,073.9031 Sta 12+29.77  
 Course from WSW03 to WSW04 S 89° 58' 12.59" E Dist 52.4982  
 Point WSW04 N 1,466,875.3802 E 2,344,126.4013 Sta 12+82.27  
 Course from WSW04 to WSW05 S 87° 28' 12.54" E Dist 131.7748  
 Point WSW05 N 1,466,869.5637 E 2,344,258.0476 Sta 14+14.05  
 Course from WSW05 to WSW06 S 88° 00' 40.14" E Dist 244.9087  
 Point WSW06 N 1,466,861.0641 E 2,344,502.8088 Sta 16+58.96  
 Course from WSW06 to WSW07 S 88° 36' 55.56" E Dist 124.9597  
 Point WSW07 N 1,466,858.0447 E 2,344,627.7320 Sta 17+83.92  
 Course from WSW07 to WSW08 S 88° 28' 51.31" E Dist 138.4496  
 Point WSW08 N 1,466,854.3745 E 2,344,766.1330 Sta 19+22.36  
 Course from WSW08 to WSW09 S 89° 32' 44.64" E Dist 64.1747  
 Point WSW09 N 1,466,853.8657 E 2,344,830.3057 Sta 19+86.54  
 Course from WSW09 to WSW10 N 89° 57' 23.82" E Dist 138.1422  
 Point WSW10 N 1,466,853.9703 E 2,344,968.4479 Sta 21+24.68  
 Course from WSW10 to PTH01 S 86° 17' 53.71" E Dist 48.5129  
 Point PTH01 N 1,466,850.8381 E 2,345,016.8596 Sta 21+73.19  
 Course from PTH01 to PC PTH05 N 87° 53' 13.38" E Dist 296.0955

Curve Data

Curve PTH05  
 P.I. Station 25+04.61 N 1,466,863.0574 E 2,345,348.0533  
 Delta = 1° 37' 08.42" (LT)  
 Degree = 2° 17' 30.59"  
 Tangent = 35.3236  
 Length = 70.6424  
 Radius = 2,500.0000  
 External = 0.2495  
 Long Chord = 70.6401  
 Mid. Ord. = 0.2495  
 P.C. Station 24+69.29 N 1,466,861.7551 E 2,345,312.7538  
 P.T. Station 25+39.93 N 1,466,865.3566 E 2,345,383.3020  
 C.C. N 1,469,360.0553 E 2,345,220.5799  
 Back = N 87° 53' 13.38" E  
 Ahead = N 86° 16' 04.96" E  
 Chord Bear = N 87° 04' 39.17" E  
 Course from PT PTH05 to PC PTH06 N 86° 16' 04.96" E Dist 546.6903

Curve Data

Curve PTH06  
 P.I. Station 32+63.15 N 1,466,912.4302 E 2,346,104.9900  
 Delta = 4° 02' 38.83" (RT)  
 Degree = 1° 08' 45.30"  
 Tangent = 176.5313  
 Length = 352.9160  
 Radius = 5,000.0000  
 External = 3.1154  
 Long Chord = 352.8428  
 Mid. Ord. = 3.1134  
 P.C. Station 30+86.62 N 1,466,900.9400 E 2,345,928.8330  
 P.T. Station 34+39.54 N 1,466,911.4685 E 2,346,281.5187  
 C.C. N 1,461,911.5427 E 2,346,254.2772  
 Back = N 86° 16' 04.96" E  
 Ahead = S 89° 41' 16.21" E  
 Chord Bear = N 88° 17' 24.38" E  
 Course from PT PTH06 to PTH08 S 89° 41' 16.21" E Dist 281.8006  
 Point PTH08 N 1,466,909.9331 E 2,346,563.3151 Sta 37+21.34  
 Course from PTH08 to ESW01 S 44° 28' 36.11" E Dist 66.5239  
 Point ESW01 N 1,466,862.4660 E 2,346,609.9230 Sta 37+87.86  
 Course from ESW01 to ESW02 S 44° 28' 36.11" E Dist 66.2179  
 Point ESW02 N 1,466,815.2171 E 2,346,656.3165 Sta 38+54.08  
 Course from ESW02 to PC ESW01 S 44° 28' 36.11" E Dist 78.6515

Curve Data

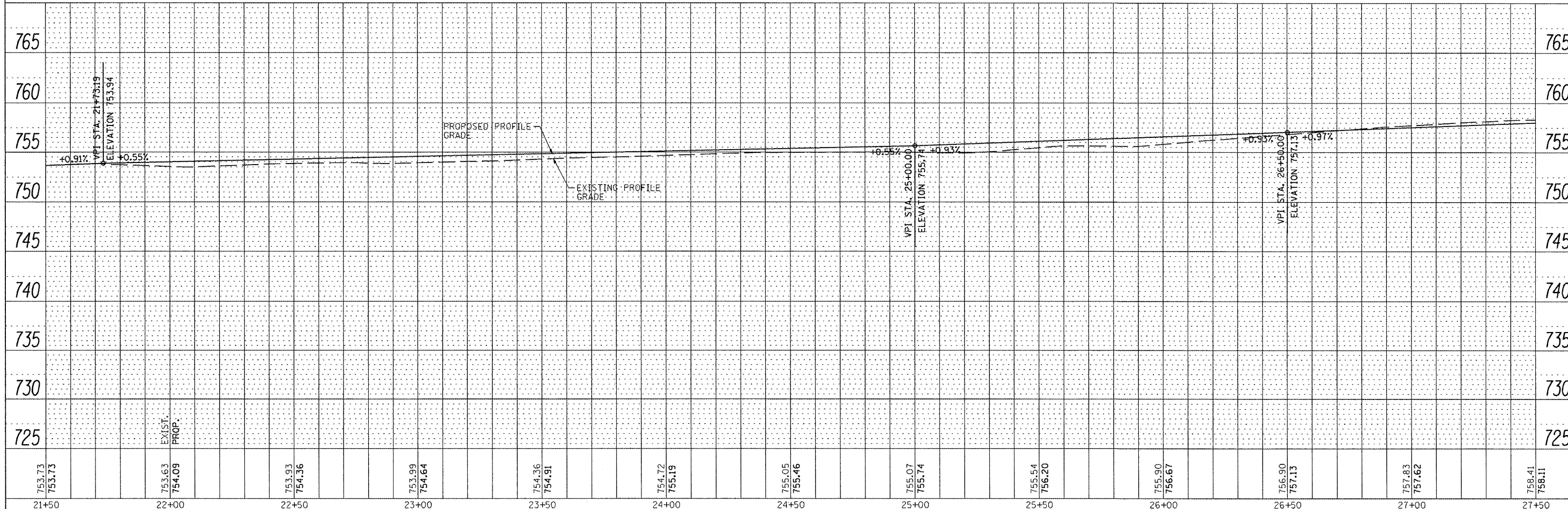
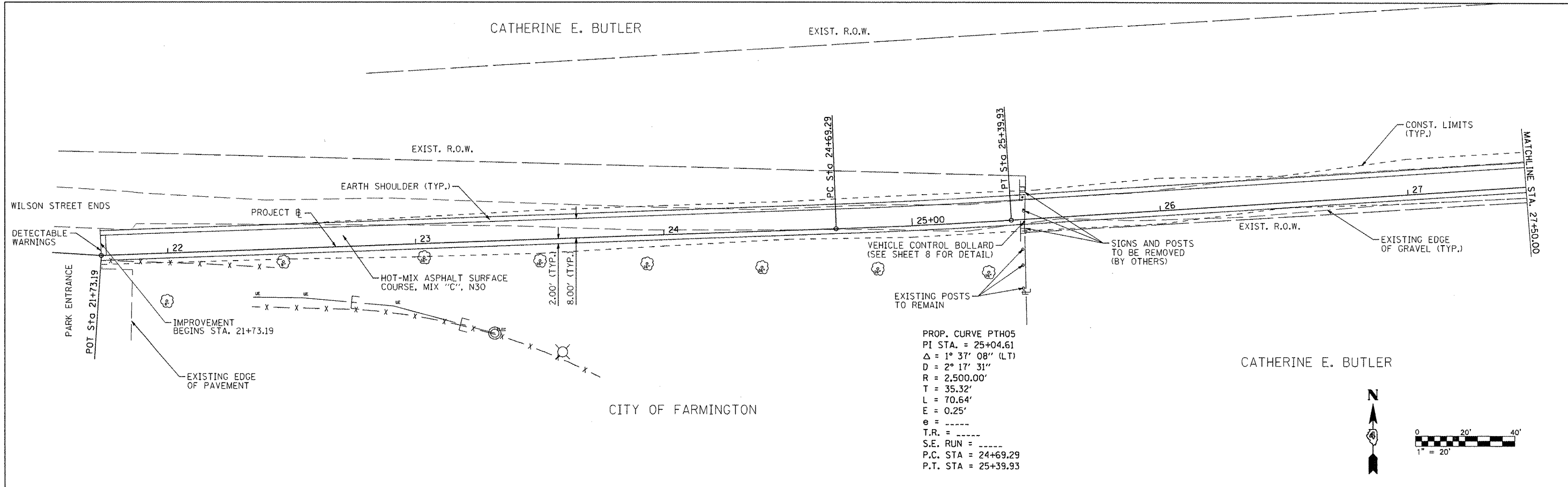
Curve ESW01  
 P.I. Station 39+42.84 N 1,466,751.8832 E 2,346,718.5040  
 Delta = 44° 02' 02.54" (LT)  
 Degree = 229° 10' 59.22"  
 Tangent = 10.1093  
 Length = 19.2135  
 Radius = 25.0000  
 External = 1.9666  
 Long Chord = 18.7441  
 Mid. Ord. = 1.8232  
 P.C. Station 39+32.73 N 1,466,759.0965 E 2,346,711.4213  
 P.T. Station 39+51.95 N 1,466,751.6204 E 2,346,728.6099  
 C.C. N 1,466,776.6120 E 2,346,729.2596  
 Back = S 44° 28' 36.11" E  
 Ahead = S 88° 30' 38.65" E  
 Chord Bear = S 66° 29' 37.38" E  
 Course from PT ESW01 to ESW05 S 88° 30' 38.65" E Dist 64.1247  
 Point ESW05 N 1,466,749.9539 E 2,346,792.7129 Sta 40+16.07  
 Course from ESW05 to ESW06 S 88° 31' 12.81" E Dist 66.3937  
 Point ESW06 N 1,466,748.2393 E 2,346,859.0845 Sta 40+82.46  
 Course from ESW06 to ESW07 S 51° 56' 37.91" E Dist 75.7514  
 Point ESW07 N 1,466,701.5436 E 2,346,918.7317 Sta 41+58.22  
 Course from ESW07 to ESW08 S 1° 38' 24.74" W Dist 193.5976  
 Point ESW08 N 1,466,508.0254 E 2,346,913.1904 Sta 43+51.81

Ending chain PATH\_1 description

FILE NAME =	USER NAME = jllewis	DESIGNED - JDS	REVISED -	<b>STATE OF ILLINOIS DEPARTMENT OF TRANSPORTATION</b>	<b>CITY OF FARMINGTON SRTS ALIGNMENT, TIES, AND BENCHMARKS</b>			SECTION	COUNTY	TOTAL SHEETS	SHEET NO.
S:\247\24718001 Farmington SRTS\CADD\CAD	DD Sheets\0489569-shr-ATB.dgn	DRAWN - WLL	REVISED -		08-00032-00-SW	FULTON	13	4			
PLOT SCALE = 200.0000 / IN.	CHECKED - GBM	REVISD -	REVISD -		CONTRACT NO. 89569						
PLOT DATE = 12/28/2010	DATE -	REVISD -	REVISD -		SCALE:	SHEET NO.	OF	SHEETS	STA.	TO STA.	ILLINOIS FED. AID PROJECT

PLAN	SURVEYED	DATE
	PLOTTED	
	CHECKED	
	BY	
	NO. OF MAY CHECKED	
	ADD. FILE NAME	
	NO.	

PROFILE	SURVEYED	DATE
	PLOTTED	
	CHECKED	
	BY	
	NO. OF MAY CHECKED	
	STRUCTURE NOTATION CHFD	
	NO.	



753.73	753.73	753.63	754.09	753.93	754.36	753.99	754.64	754.36	754.91	754.72	755.19	755.05	755.46	755.07	755.74	755.54	756.20	755.90	756.67	756.90	757.13	757.83	757.62	758.41	758.11	
21+50	22+00	22+50	23+00	23+50	24+00	24+50	25+00	25+50	26+00	26+50	27+00	27+50														

FILE NAME = S:\247\24710001 Farmington SRYS\CADD\CADD  
 USER NAME = jds  
 DESIGNED - JDS  
 DRAWN - WLL  
 CHECKED - GBM  
 PLOT DATE = 1/13/2011

SHEETS 0489569-sht-planprof3.DGN  
 PLOT SCALE = 40,00000 / IN.  
 DATE -

STATE OF ILLINOIS  
 DEPARTMENT OF TRANSPORTATION

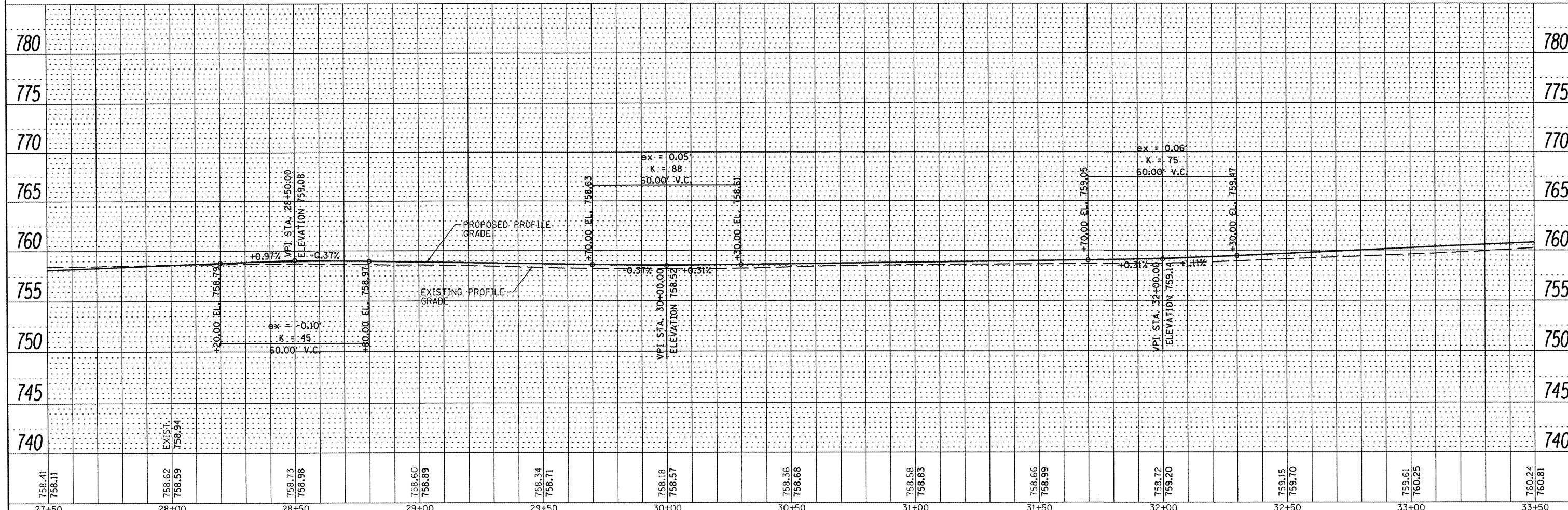
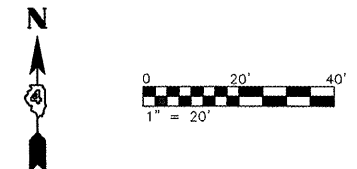
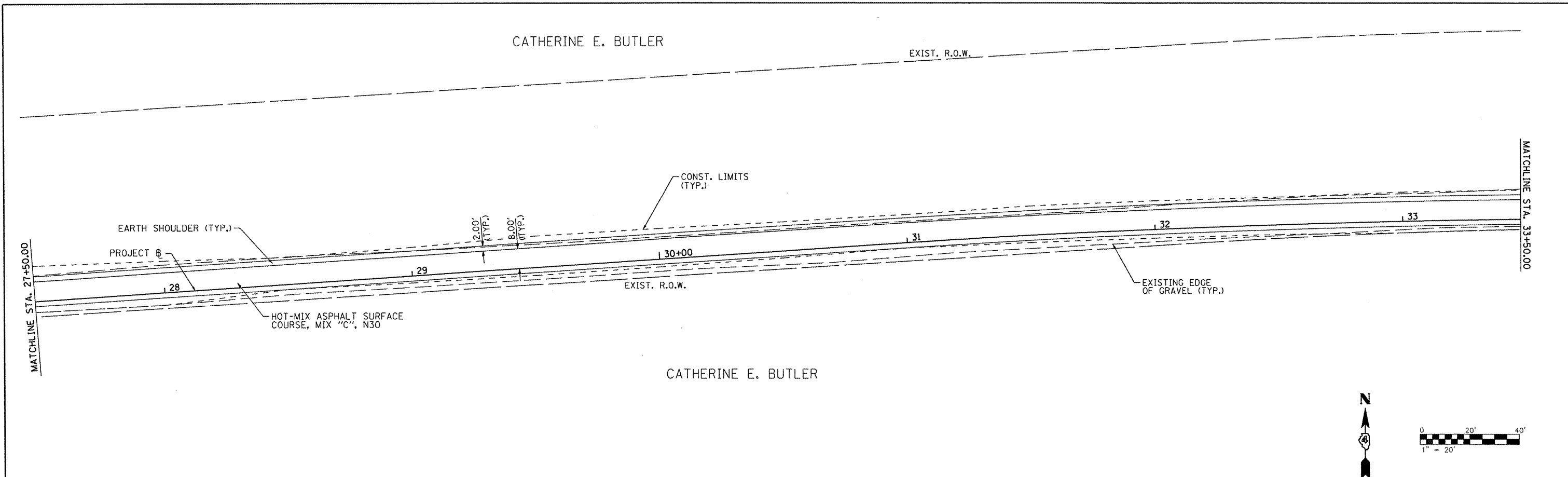
CITY OF FARMINGTON SRYS  
 PLAN AND PROFILE  
 SCALE: SHEET NO. OF SHEETS STA. TO STA.

SECTION 08-00032-00-SW  
 COUNTY FULTON  
 TOTAL SHEETS 13  
 SHEET NO. 5  
 CONTRACT NO. 89569  
 ILLINOIS FED. AID PROJECT



DATE	
BY	
DESIGNED	
PLANNED	
NOTED	
NO.	
FILE NAME	

DATE	
BY	
DESIGNED	
PLANNED	
NOTED	
NO.	
FILE NAME	



758.41 758.11	758.62 758.59	758.73 758.98	758.60 758.89	758.34 758.71	758.18 758.57	758.36 758.68	758.58 758.83	758.66 758.99	758.72 759.20	759.15 759.70	760.24 760.81
27+50	28+00	28+50	29+00	29+50	30+00	30+50	31+00	31+50	32+00	32+50	33+50

FILE NAME =  
S:\247\24710001 Farmington SRTS\CADD\CADD

USER NAME = wllouis  
Sheets\489569-sht-planprof4.DGN  
PLOT SCALE = 40.0000' / 1" IN.  
PLOT DATE = 12/20/2010

DESIGNED - JDS  
DRAWN - WLL  
CHECKED - GBM  
DATE -

REVISED -  
REVISED -  
REVISED -  
REVISED -

**STATE OF ILLINOIS  
DEPARTMENT OF TRANSPORTATION**

**CITY OF FARMINGTON SRTS  
PLAN AND PROFILE**

SCALE: SHEET NO. OF SHEETS STA. TO STA.

SECTION	COUNTY	TOTAL SHEETS	SHEET NO.
08-00032-00-SW	FULTON	13	6
CONTRACT NO. 89569			

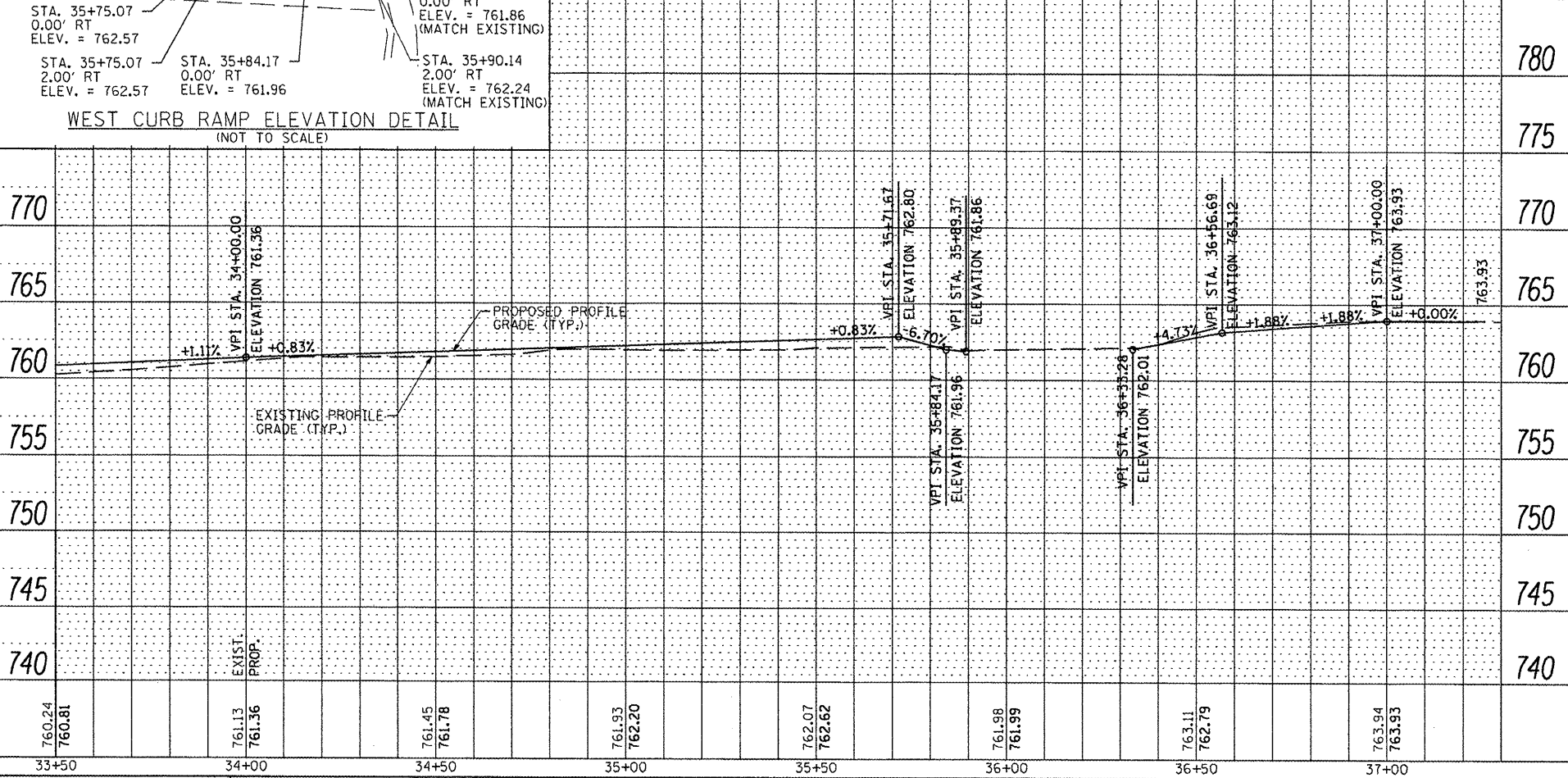
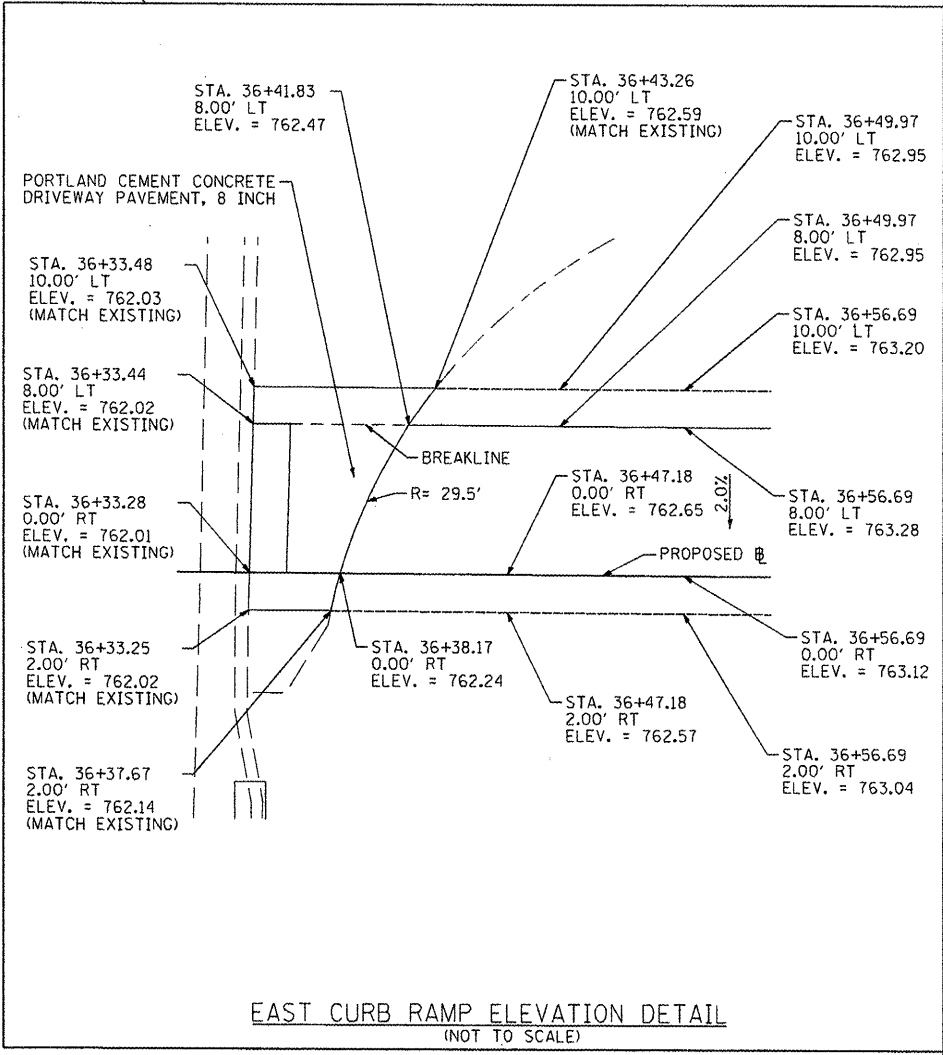
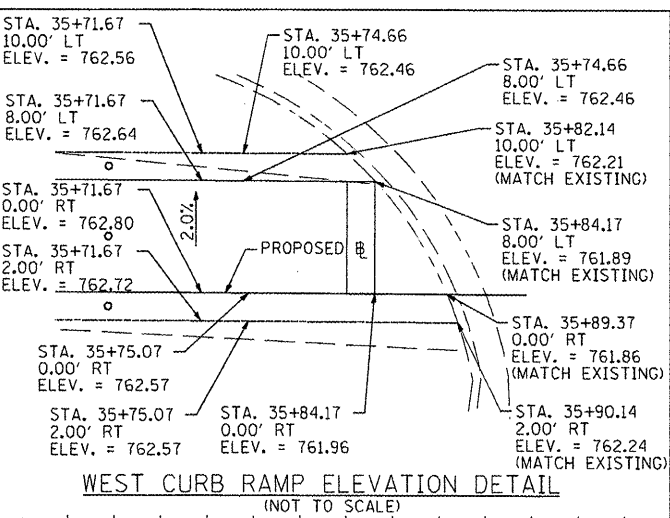
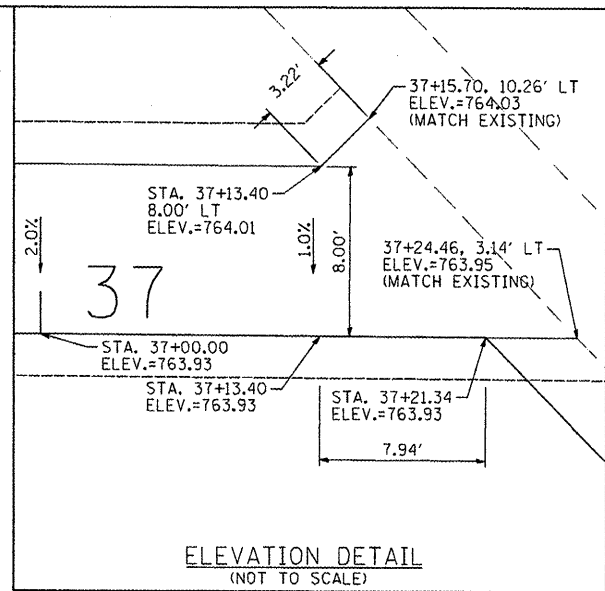
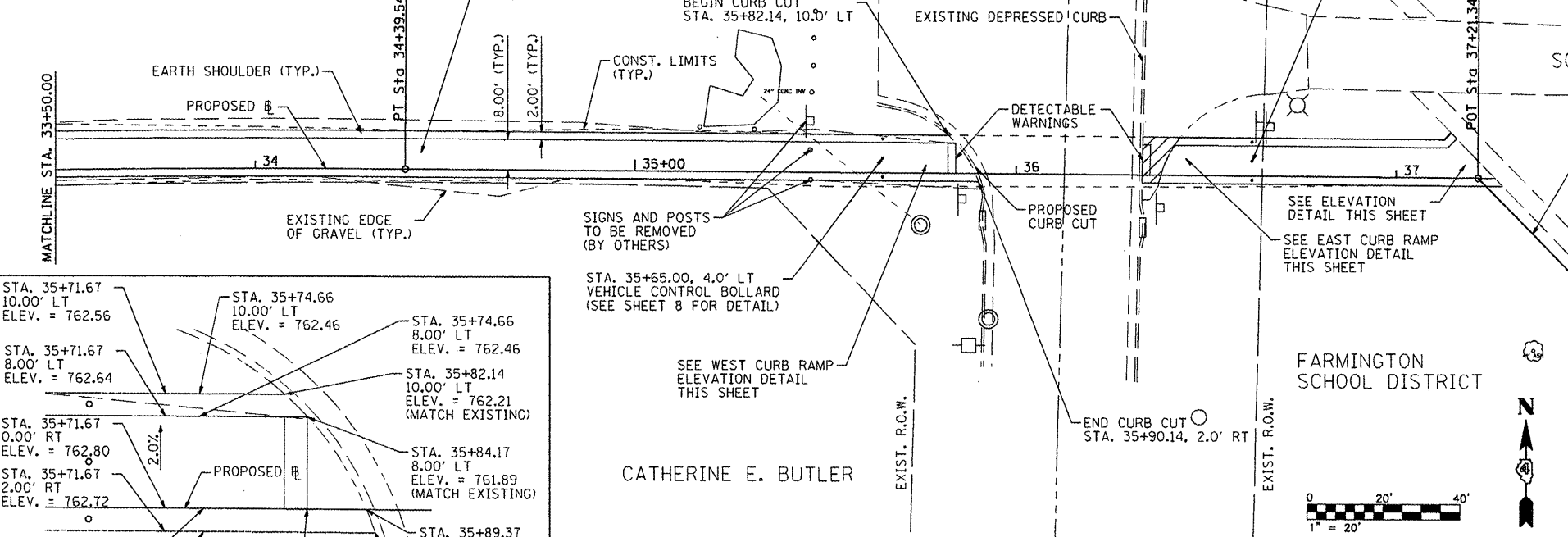
ILLINOIS FED. AID PROJECT

CATHERINE E. BUTLER

NOTES:  
 1. CROSS WALK STRIPING ALREADY EXISTS ACROSS LIGHTFOOT RD. THE EXISTING STRIPING WILL REMAIN AND NEW STRIPING WILL NOT BE PLACED.  
 2. THE LIMITS OF THE DRIVEWAY PAVEMENT REMOVAL SHALL BE SAW CUT FULL DEPTH.

LEGEND  
 DRIVEWAY PAVEMENT REMOVAL

FARMINGTON SCHOOL DISTRICT



PLAN	DATE
BY	
REVISIONS	
NO.	

PROFILE	DATE
BY	
REVISIONS	
NO.	

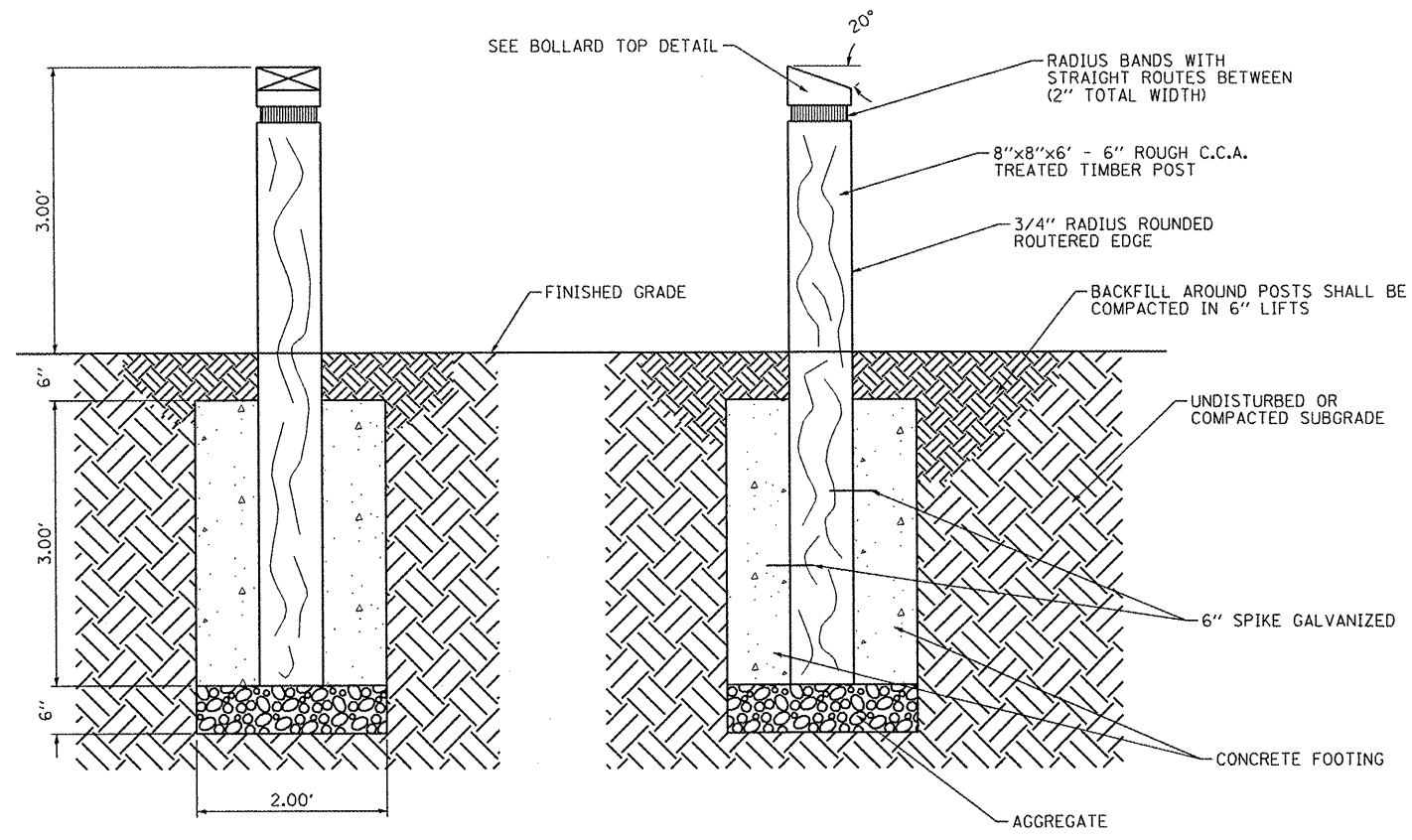
FILE NAME =	USER NAME = jdspliller	DESIGNED - JDS	REVISED -
S:\247\24718001 Farmington SR15CA00\CAD	Sheets\0489569-shr-plan\prof5.DGN	DRAWN - WLL	REVISED -
	PLOT SCALE = 48.0000" / IN.	CHECKED - GBM	REVISED -
	PLOT DATE = 1/13/2011	DATE -	REVISED -

STATE OF ILLINOIS  
 DEPARTMENT OF TRANSPORTATION

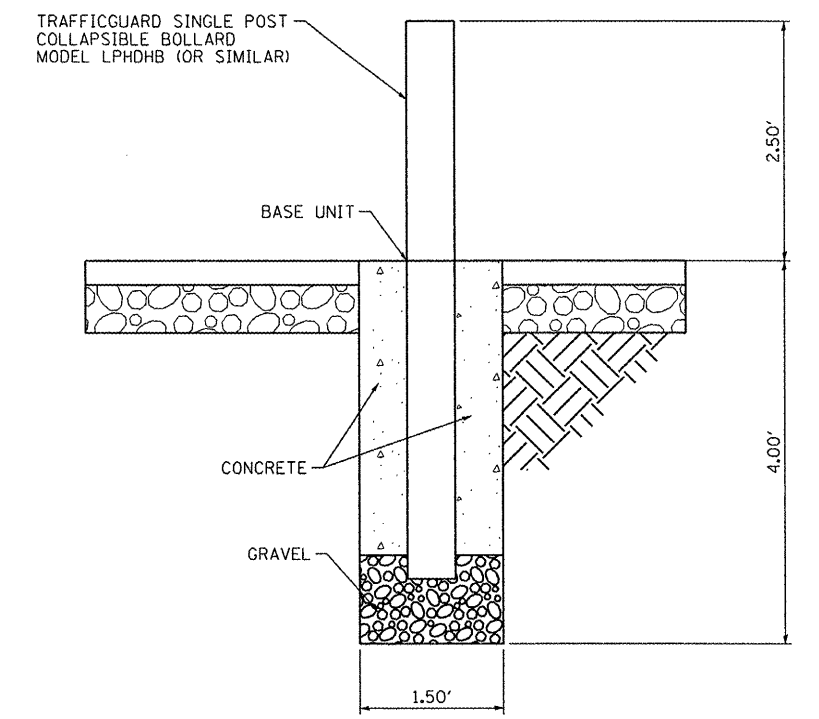
CITY OF FARMINGTON SR15  
 PLAN AND PROFILE

SCALE: SHEET NO. OF SHEETS STA. TO STA.

SECTION	COUNTY	TOTAL SHEETS	SHEET NO.
08-00032-00-SW	FULTON	13	7
		CONTRACT NO. 89569	
ILLINOIS FED. AID PROJECT			

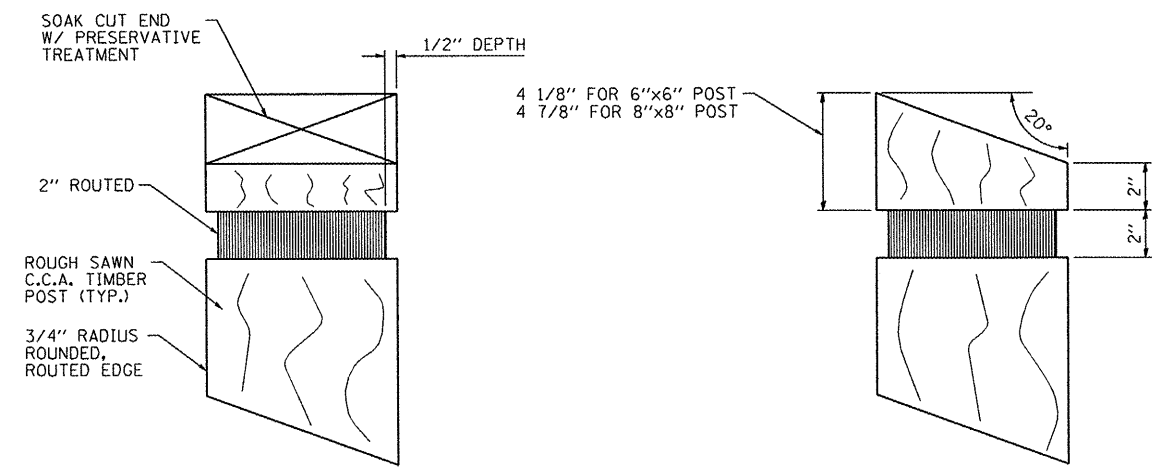


WOOD BOLLARD DETAIL

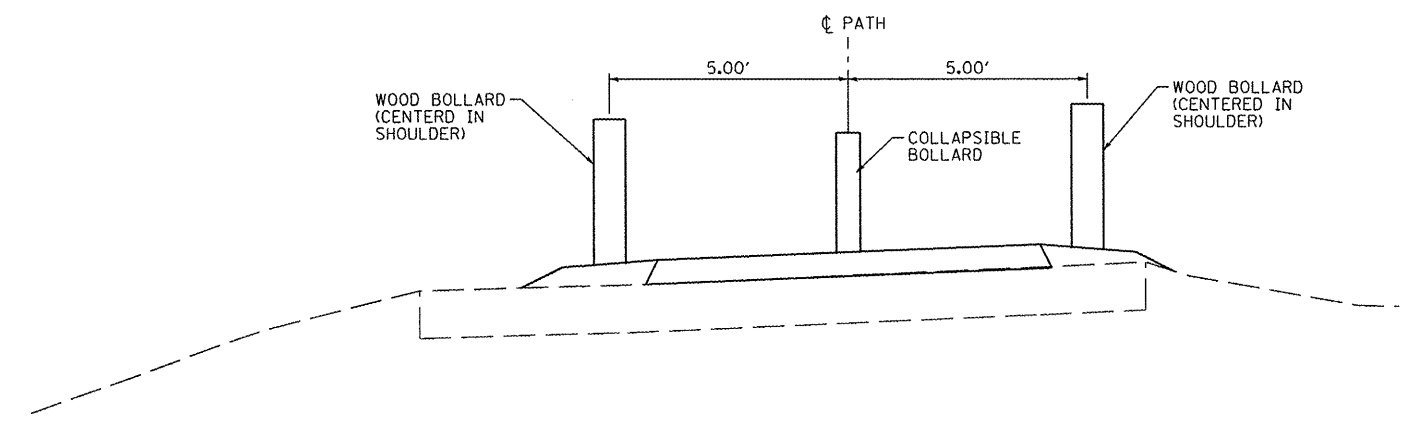


NOTE: COLLAPSIBLE BOLLARD MUST BE INSTALLED SO ENTIRE LENGTH RESTS ON PAVEMENT WHEN COLLAPSED.

COLLAPSIBLE BOLLARD DETAIL



BOLLARD TOP DETAIL



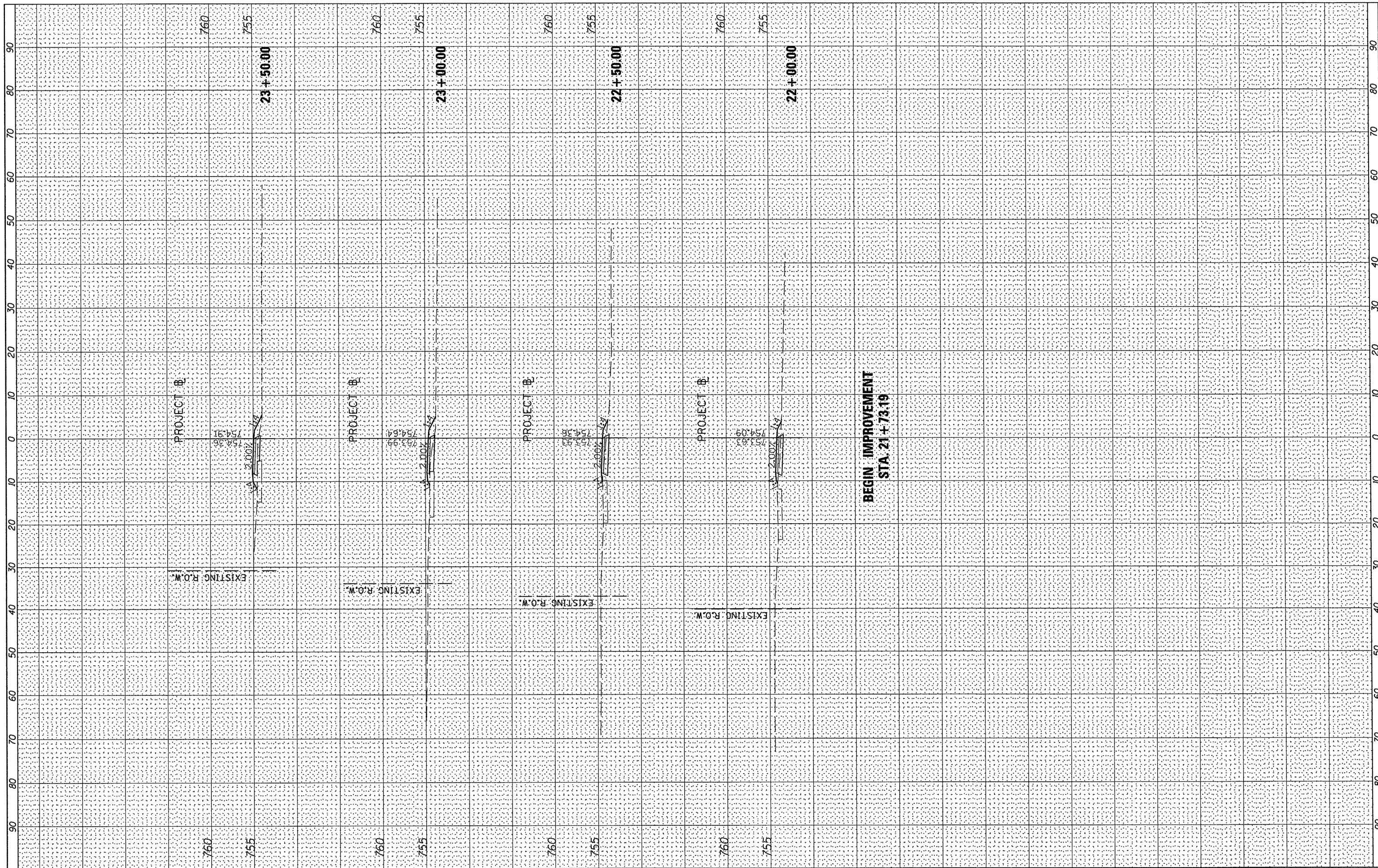
BOLLARD PLACEMENT DETAIL

FILE NAME = S:\247\24710001 Farmington SRTS\CA00\CA00	USER NAME = willis	DESIGNED - JDS	REVISED -	<b>STATE OF ILLINOIS DEPARTMENT OF TRANSPORTATION</b>	<b>CITY OF FARMINGTON SRTS VEHICLE CONTROL BOLLARD DETAIL</b>			SECTION	COUNTY	TOTAL SHEETS	SHEET NO.
Sheets\0489569-sht-details.dgn	DRAWN - WLL	REVISED -	REVISED -		08-00032-00-SW	FULTON	13	8			
PLOT SCALE = 2.0000 "/ IN.	CHECKED - GBM	REVISED -	REVISED -		CONTRACT NO. 89569			ILLINOIS FED. AID PROJECT			
PLOT DATE = 12/20/2010	DATE -	REVISED -	REVISED -		SCALE:	SHEET NO. OF SHEETS	STA. TO STA.				



FINAL SURVEY	SURVEYED	BY	DATE
NOTE BOOK	PLOTTED		
NO.	TEMPLATE		
	AREAS CHECKED		

ORIGINAL SURVEY	SURVEYED	BY	DATE
NOTE BOOK	PLOTTED		
NO.	TEMPLATE		
	AREAS CHECKED		



FILE NAME = S:\247\24710001 Farmington SRTS\CADD\CADD Sheets\0489569-sht-ssht.dgn	USER NAME = wilewis	DESIGNED - JDS	REVISED -
PLOT SCALE = 20.0000' / IN.	CHECKED - GBM	DATE -	REVISED -
PLOT DATE = 12/20/2010			

**STATE OF ILLINOIS  
DEPARTMENT OF TRANSPORTATION**

**CITY OF FARMINGTON SRTS CROSS SECTIONS**

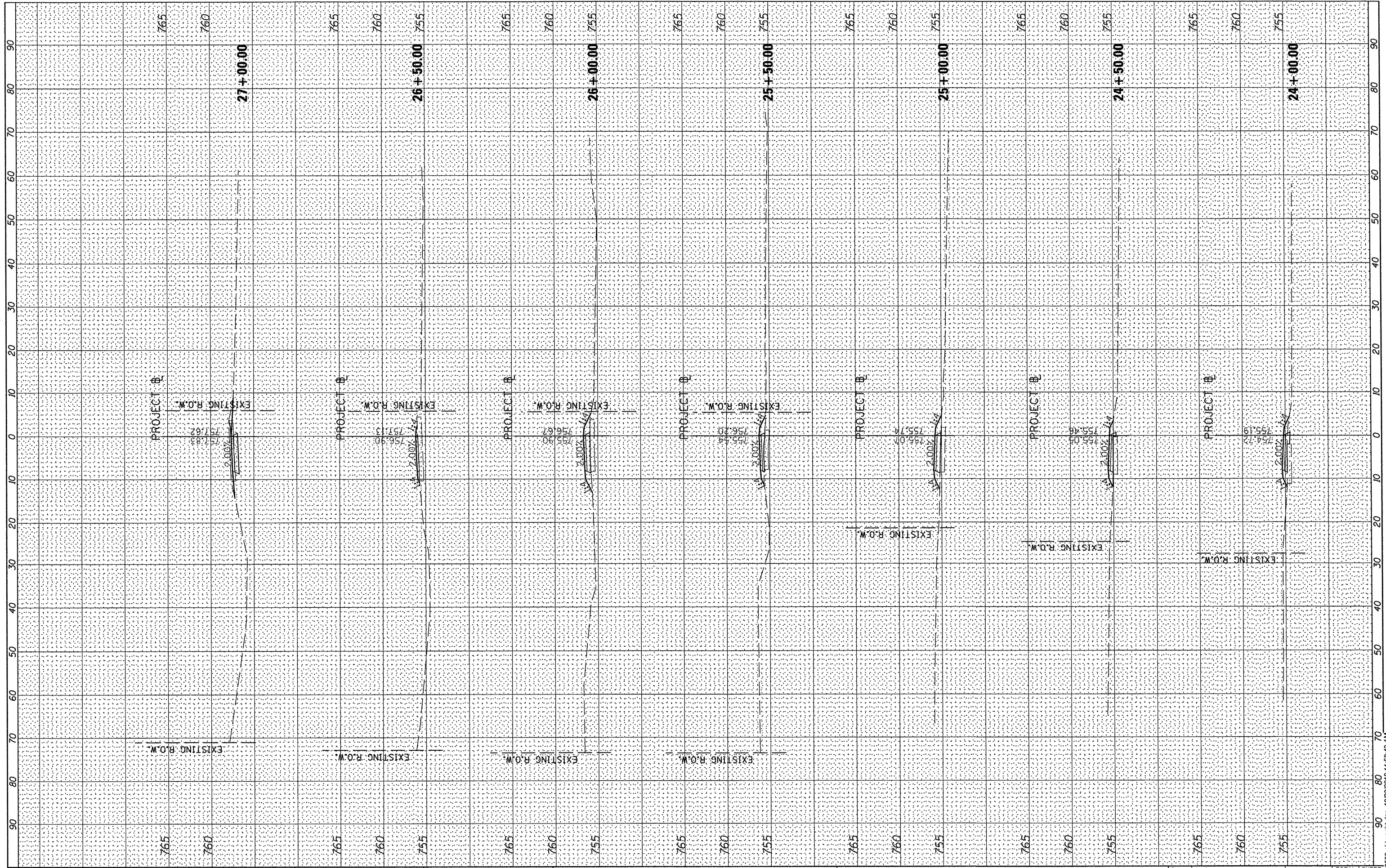
SCALE: SHEET NO. OF SHEETS STA. 22+00.00 TO STA. 23+50.00

F.A. RTE.	SECTION	COUNTY	TOTAL SHEETS	SHEET NO.
	08-00032-00-SW	FULTON	13	9
CONTRACT NO. 89569			ILLINOIS FED. AID PROJECT	

D:\489569-sht-ssht.dgn 12/20/2010 11:58:51 AM

FINAL SURVEY	SURVEYED	BY	DATE
NOTE BOOK	PLOTTED		
AREAS CHECKED	TEMPLATE		
	AREAS CHECKED		

ORIGINAL SURVEY	SURVEYED	BY	DATE
NOTE BOOK	PLOTTED		
AREAS CHECKED	TEMPLATE		
	AREAS CHECKED		



FILE NAME = S:\247\24710001 Farmington SRTS\CADD\CADD Sheets\0489569-sht-ssht.dgn  
 USER NAME = wlewis  
 PLOT SCALE = 20.0000' / IN.  
 PLOT DATE = 12/20/2010

DESIGNED - JDS  
 DRAWN - JDS  
 CHECKED - GBM  
 DATE -

REVISED -  
 REVISED -  
 REVISED -  
 REVISED -

**STATE OF ILLINOIS  
 DEPARTMENT OF TRANSPORTATION**

**CITY OF FARMINGTON SRTS CROSS SECTIONS**

SCALE: SHEET NO. OF SHEETS STA. 24+00.00 TO STA. 27+00.00

F.A. RTE.	SECTION	COUNTY	TOTAL SHEETS	SHEET NO.
	08-00032-00-SW	FULTON	13	10
ILLINOIS FED. AID PROJECT			CONTRACT NO. 89569	

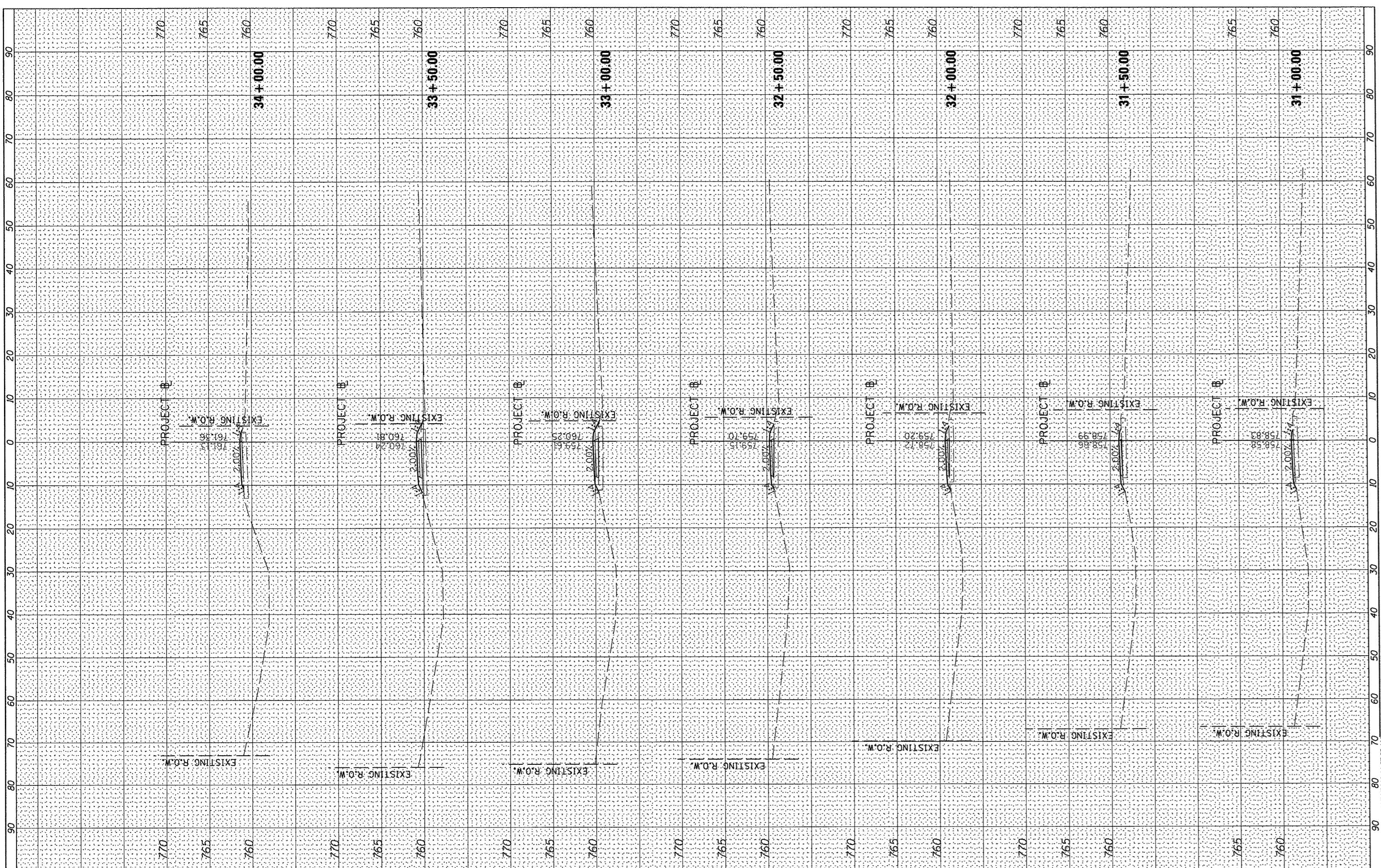
D:\489569-sht-ssht.dgn 12/20/2010 11:58:43 AM





FINAL	DATE
ISSUED	BY
REVISED	
NOTED	
NOTED	
NOTED	
NOTED	
NOTED	
NOTED	

ORIGINAL	DATE
ISSUED	BY
REVISED	
NOTED	
NOTED	
NOTED	
NOTED	
NOTED	
NOTED	



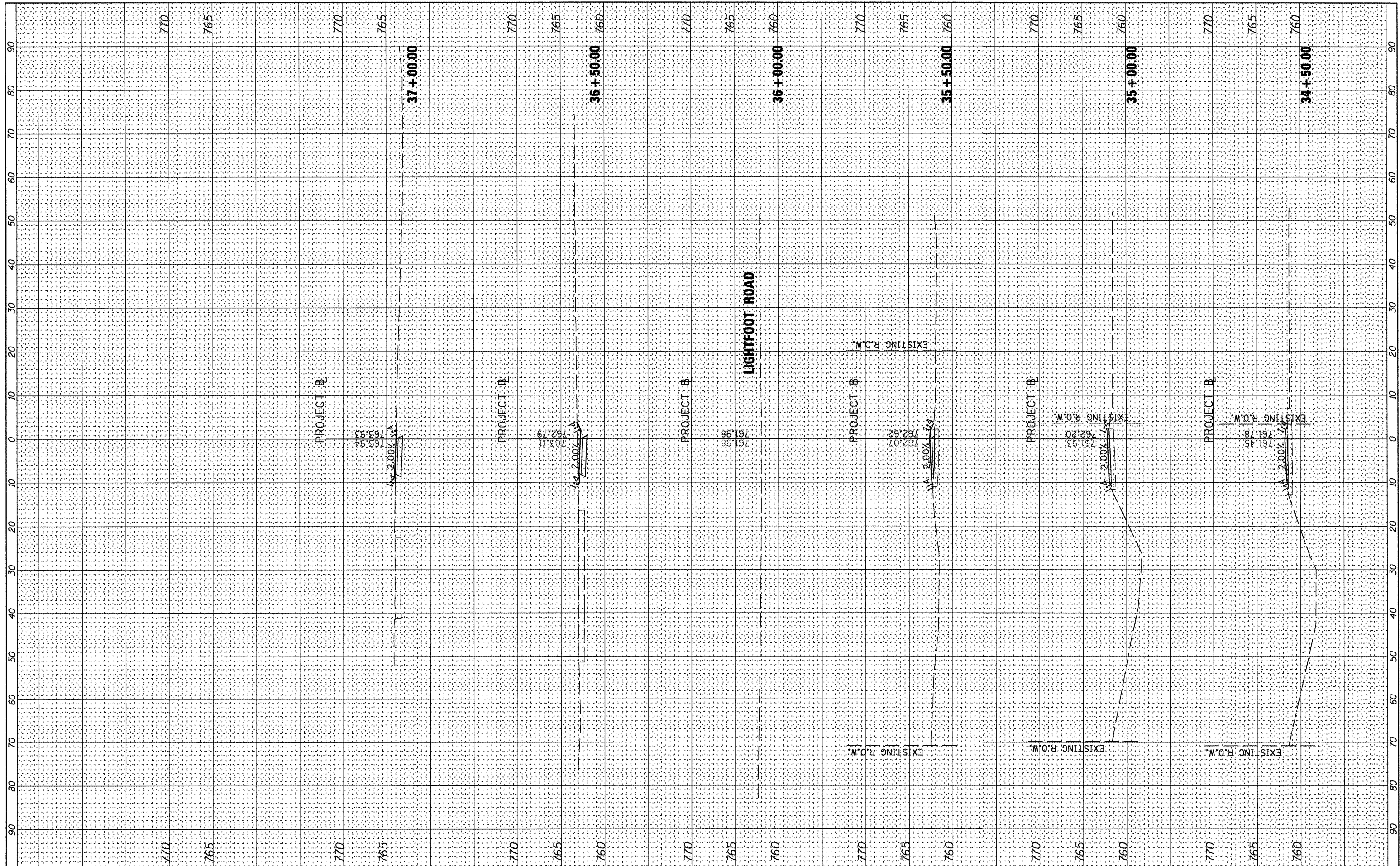
FILE NAME: S:\247124710001 Farmington SRIS\CAADD\CADD SHEETS\0489569.dwg	USER NAME: jllewis	DESIGNED: JDS	REVISED:	<b>STATE OF ILLINOIS</b> <b>DEPARTMENT OF TRANSPORTATION</b>	<b>CITY OF FARMINGTON SRIS CROSS SECTIONS</b>	F.A. SECTION	COUNTY	TOTAL SHEETS	SHEET NO.
PLOT SCALE: 20.0000' = 1" IN.	CHECKED: GBM	DATE:	REVISED:			08-00032-00-5W	FULTON	13	12
PLOT DATE: 12/20/2010	DATE:	REVISED:	REVISED:			CONTRACT NO. 89569			
						ILLINOIS FED. AID PROJECT			

D:\89569-ah-west.dgn 12/20/2010 11:57:35 AM



FINAL SURVEY NO.	SURVEYED BY	DATE
NOTE BOOK NO.	PLOTTED BY	
AREAS CHECKED	TEMPLATE	
	AREAS CHECKED	

ORIGINAL SURVEY NO.	SURVEYED BY	DATE
NOTE BOOK NO.	PLOTTED BY	
AREAS CHECKED	TEMPLATE	
	AREAS CHECKED	



FILE NAME = S:\247\24710001 Farmington SRTS\CADD\CADD Sheets\0489569-sht-xssht.dgn  
 USER NAME = jdspller  
 PLOT SCALE = 20.0000' / IN.  
 PLOT DATE = 1/4/2011

DESIGNED -	JDS	REVISED -	
DRAWN -	JDS	REVISED -	
CHECKED -	GBM	REVISED -	
DATE -		REVISED -	

**STATE OF ILLINOIS  
DEPARTMENT OF TRANSPORTATION**

**CITY OF FARMINGTON SRTS CROSS SECTIONS**

SCALE: SHEET NO. OF SHEETS STA. 34+50.00 TO STA. 37+50.00

F.A. RTE.	SECTION	COUNTY	TOTAL SHEETS	SHEET NO.
	08-00032-00-SW	FULTON	13	13
			CONTRACT NO. 89569	
ILLINOIS FED. AID PROJECT				