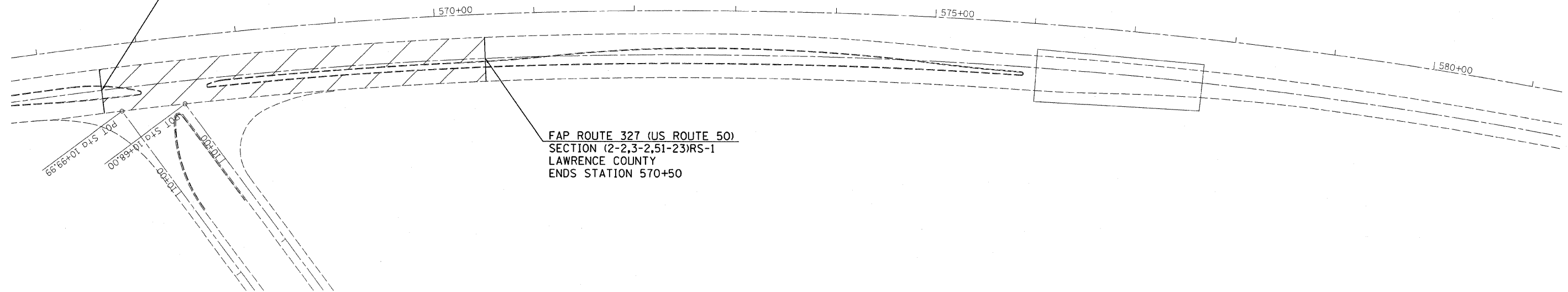
 HOT-MIX ASPHALT SURFACE REMOVAL (SPECIAL)

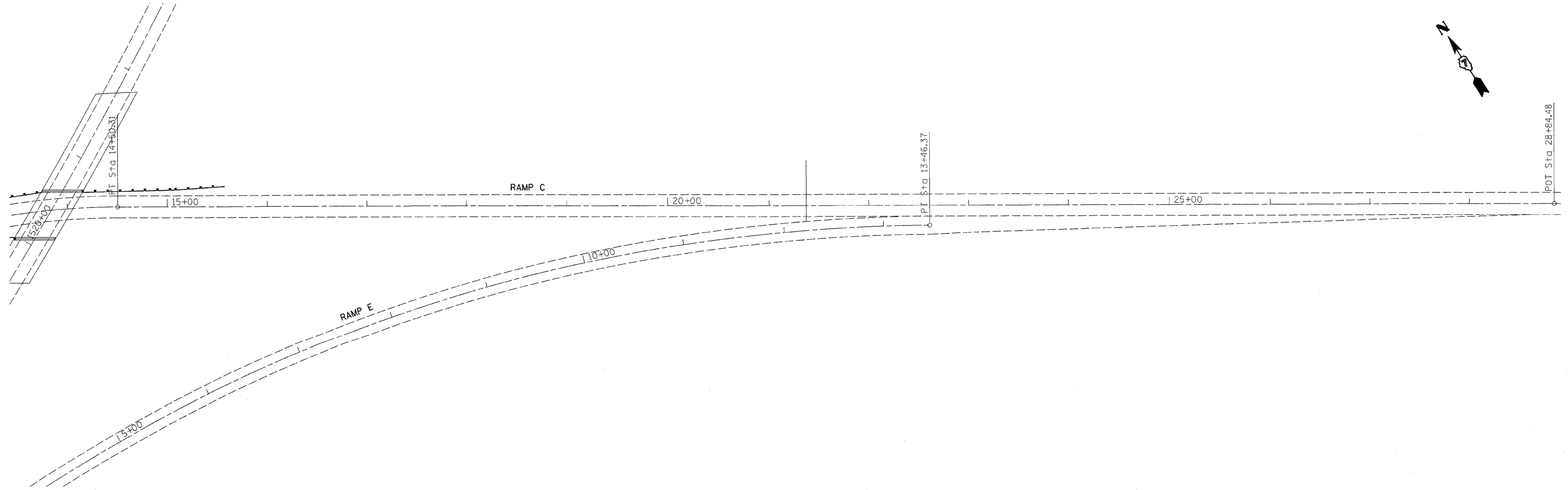
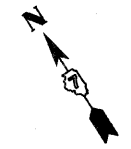


PAVING OMISSION ENDS:  
STATION 566+60



FAP ROUTE 327 (US ROUTE 50)  
SECTION (2-2,3-2,51-23)RS-1  
LAWRENCE COUNTY  
ENDS STATION 570+50

66'66+01' 015 104  
00'89+01' 045 104  
00'01+01'



FILE NAME =	USER NAME = swartzw	DESIGNED -	REVISED -	<b>STATE OF ILLINOIS DEPARTMENT OF TRANSPORTATION</b>	<b>PLAN SHEET</b>		F.A.P. RTE.	SECTION	COUNTY	TOTAL SHEETS	SHEET NO.		
c:\pw_work\p\dot\swartzw\dms56917\d79	978-shr-plan.dgn	DRAWN -	REVISED -		SCALE: 50	SHEET NO. 18 OF 19 SHEETS	STA.	TO STA.	327	(2-2,3-2,51-23)RS-1	LAWRENCE	40	33
	PLOT SCALE = 60.0000' / IN.	CHECKED -	REVISED -										
	PLOT DATE = 12/9/2010	DATE -	REVISED -										
ILLINOIS FED. AID PROJECT											CONTRACT NO. 94978		