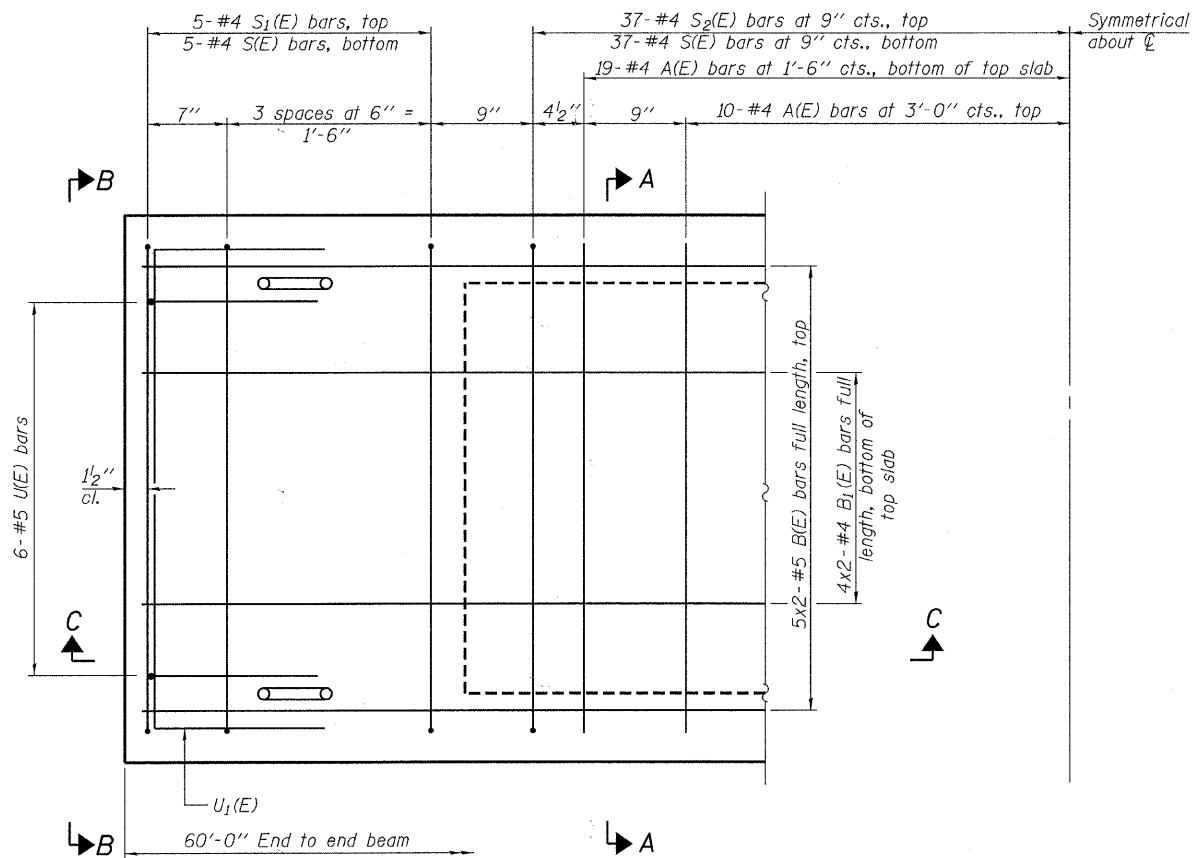


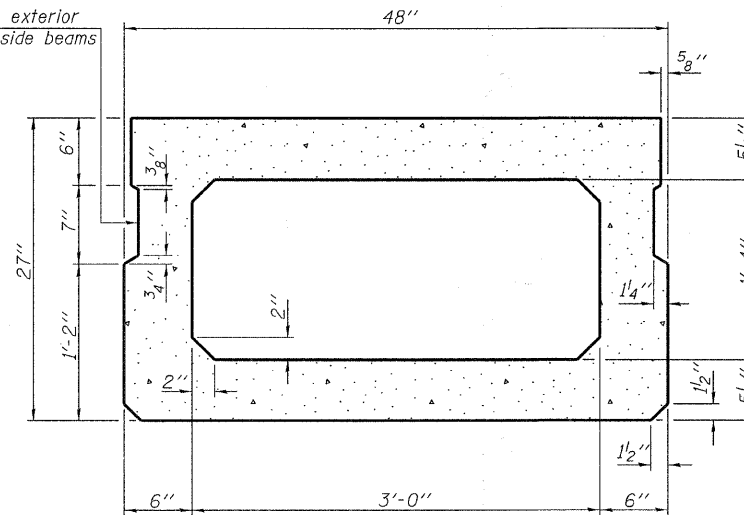
SECTION C-C



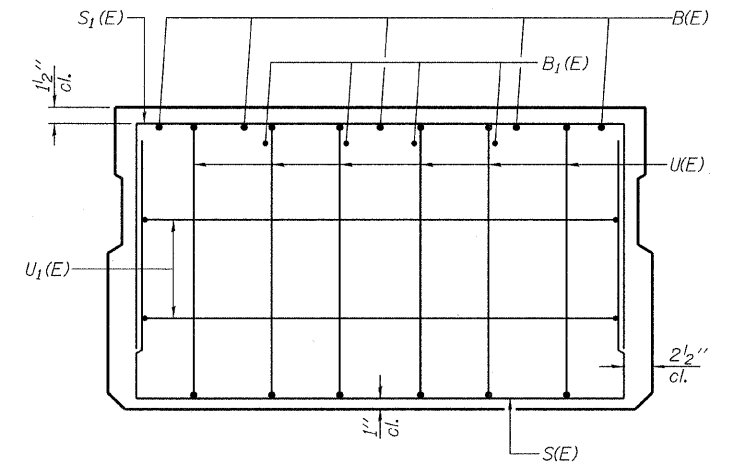
PLAN VIEW

Notes:  
 Spacing of S(E) and S<sub>2</sub>(E) bars may be adjusted up to 4" in the immediate area of the transverse tie diaphragms to miss the block outs for the transverse ties.  
 Bars indicated thus 5x2-#5 etc. indicates 5 lines of bars with 2 lengths per line.

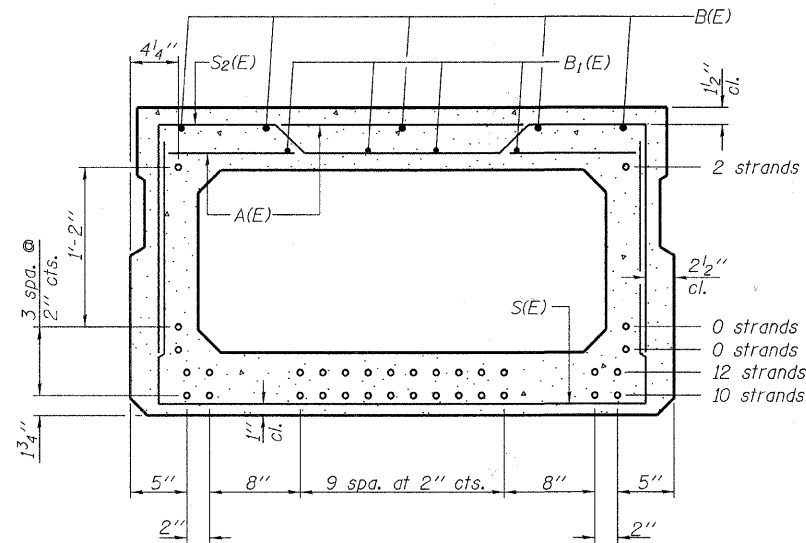
Omit key on exterior face of outside beams



SECTION A-A  
(Showing dimensions)



VIEW B-B



SECTION A-A

(Showing reinforcement and permissible strand locations)  
 Note: Place the number of strands specified in each row symmetrically about the centerline of beam in the permissible strand locations shown.

BAR LIST  
 ONE BEAM ONLY  
 (For information only)

Bar	No.	Size	Length	Shape
A(E)	58	#4	3'-7"	—
B1(E)	10	#5	31'-2"	—
B2(E)	8	#4	30'-11"	—
S(E)	82	#4	7'-5"	U
S1(E)	10	#4	6'-11"	U
S2(E)	74	#4	7'-2"	U
U(E)	12	#5	4'-6"	C
U1(E)	4	#4	6'-0"	C

Note: See sheet 3 & 4 of 9 for additional details and Bill of Material.

MINIMUM BAR LAP

#4 bar = 2'-0"  
 #5 bar = 2'-6"

DESIGNED - A.S.L.
CHECKED - S.W.M.
DRAWN - D.A.B.
CHECKED - S.W.M.

PD-2748-0

11-1-09

**HAMPTON, LENZINI AND RENWICK, INC.**  
 CIVIL ENGINEERS • STRUCTURAL ENGINEERS • LAND SURVEYORS  
 3085 STEVENSON DRIVE, SUITE 201  
 SPRINGFIELD, ILLINOIS 62703  
 217.546.3400 www.hrengeering.com

194.00085  
 ILLINOIS PROFESSIONAL DESIGN FIRM LS / PE / SE CORPORATION

PROJECT NUMBER: 10.0092.130 DATE: 04/14/10

SHEET NO. 2	T.R.	SECTION	COUNTY	TOTAL SHEETS	SHEET NO.
	10A	09-08134-00-BR	LAWRENCE	13	6
9 SHEETS	PETTY ROAD DISTRICT		CONTRACT NO. 95638		
	FED. ROAD DIST. NO.	ILLINOIS	FED. AID PROJECT		

SUPERSTRUCTURE  
 27" X 48" PPC DECK BEAM  
 STRUCTURE NO. 051-3298