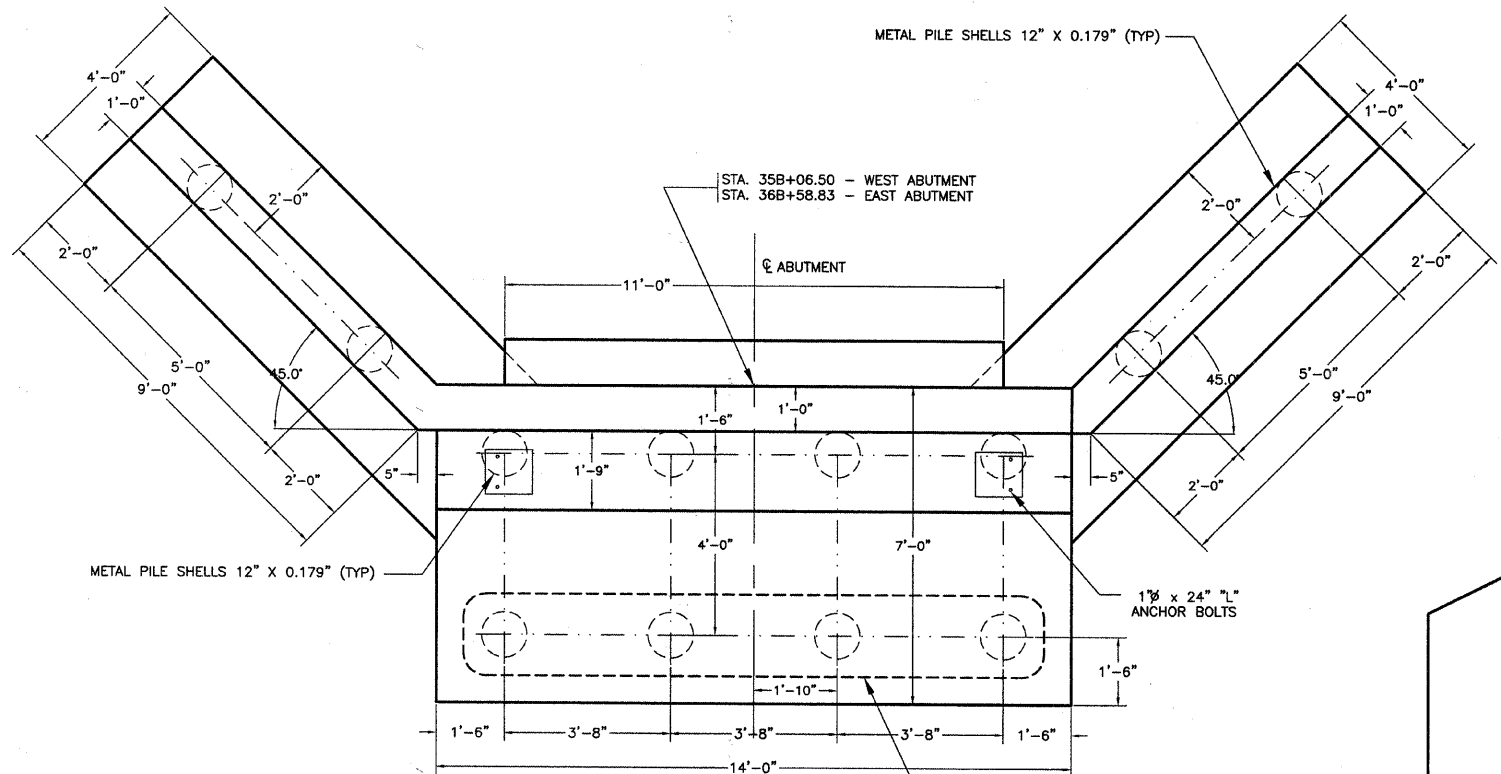
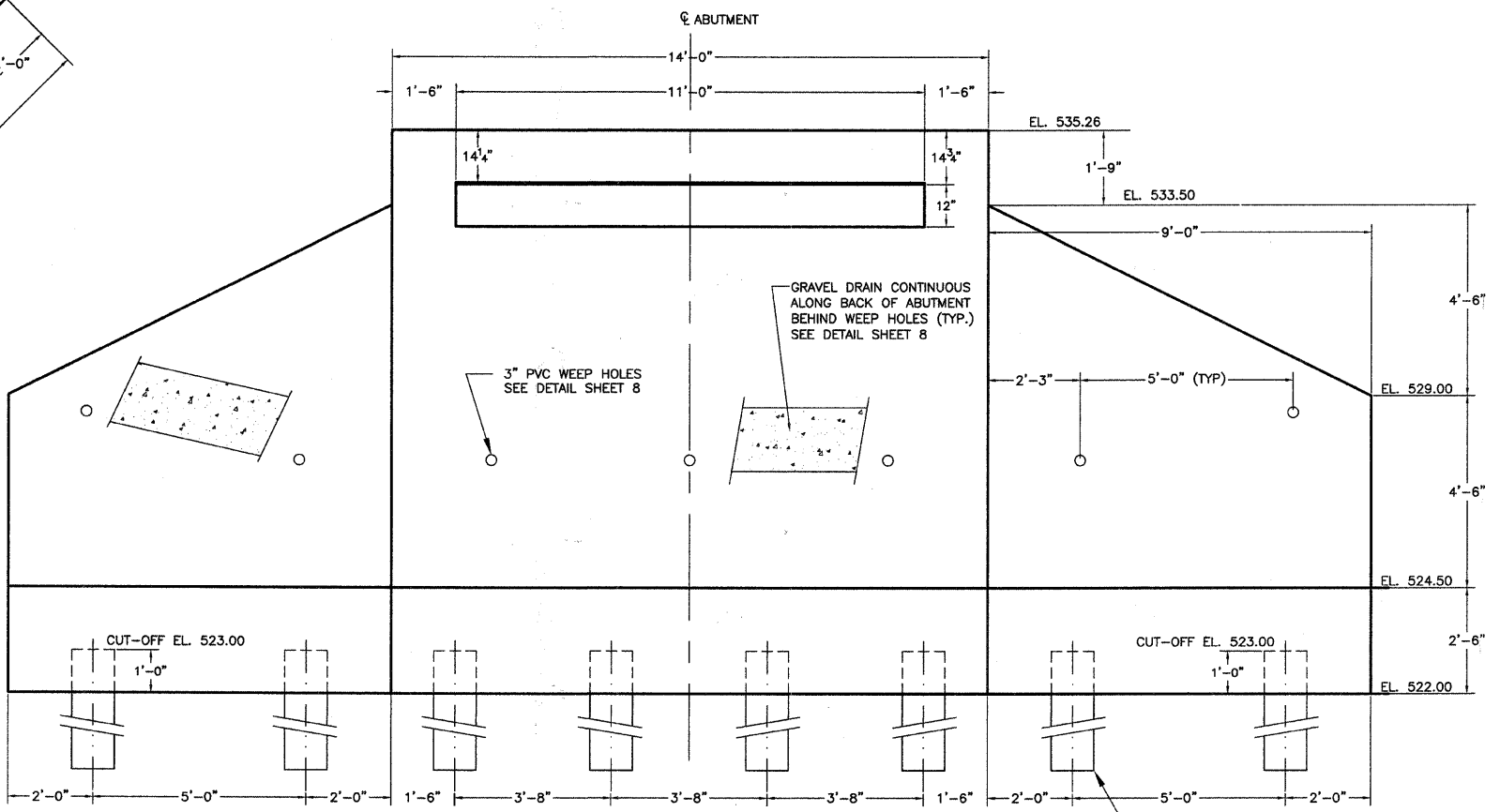


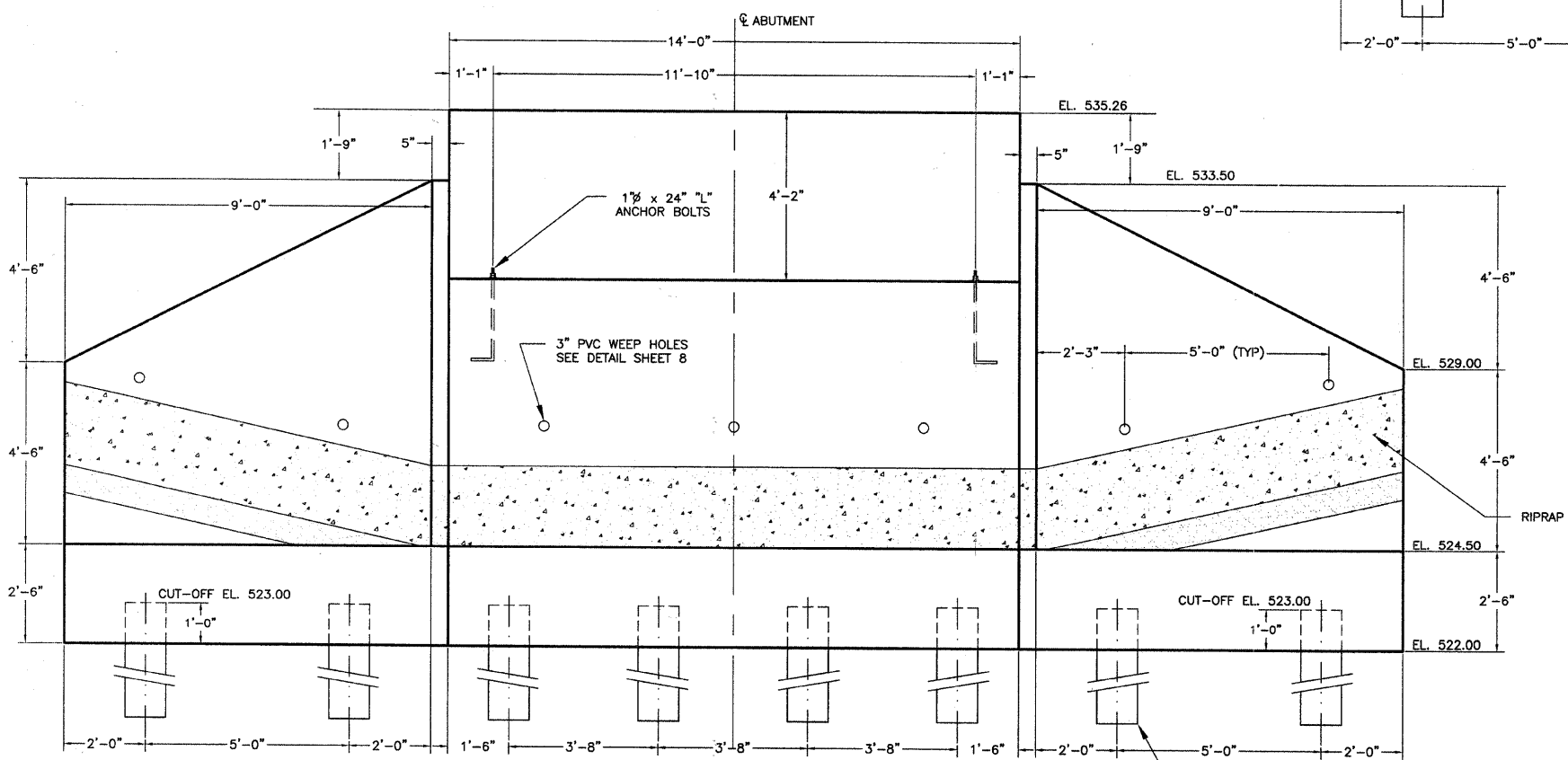
SECTION	COUNTY	TOTAL SHEETS	SHEET NO.
10-00091-00-BT	EFFINGHAM	17	6
CONTRACT NO. 95646			



PLAN VIEW
SHOWING DIMENSIONS



BACK ELEVATION VIEW
SHOWING DIMENSIONS



FRONT ELEVATION VIEW
SHOWING DIMENSIONS

NOTES:
1. Wingwalls are rotated 45° in elevations for clarity.

CHARLESTON ENGINEERING, INC.
CONSULTING ENGINEERS
105 NORTH KITCHELL
P.O. BOX 387
OLNEY, ILLINOIS 62450
(618) 392-0736
ILLINOIS DEPARTMENT OF PROFESSIONAL REGULATION REGISTRATION #184.003513

**ABUTMENT AND WINGWALL
PLAN - DIMENSIONS**

**PEDESTRIAN BRIDGE
OVER LITTLE WABASH RIVER**

SEC. 10-00091-00-BT
EFFINGHAM COUNTY
STATION 35B+82 66