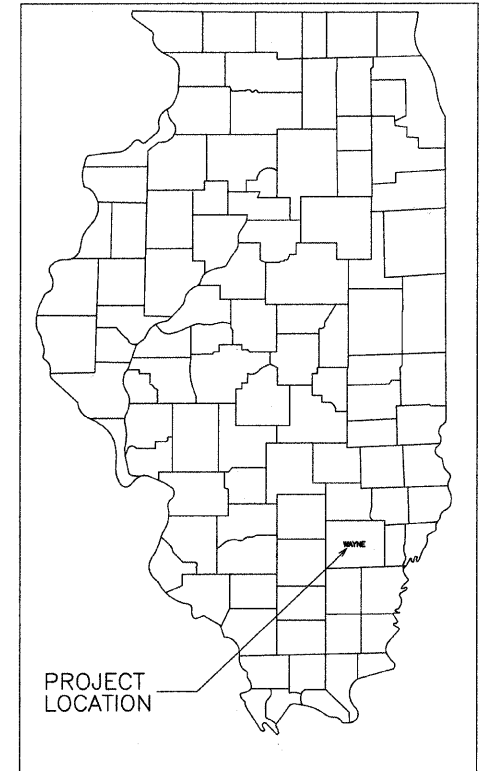


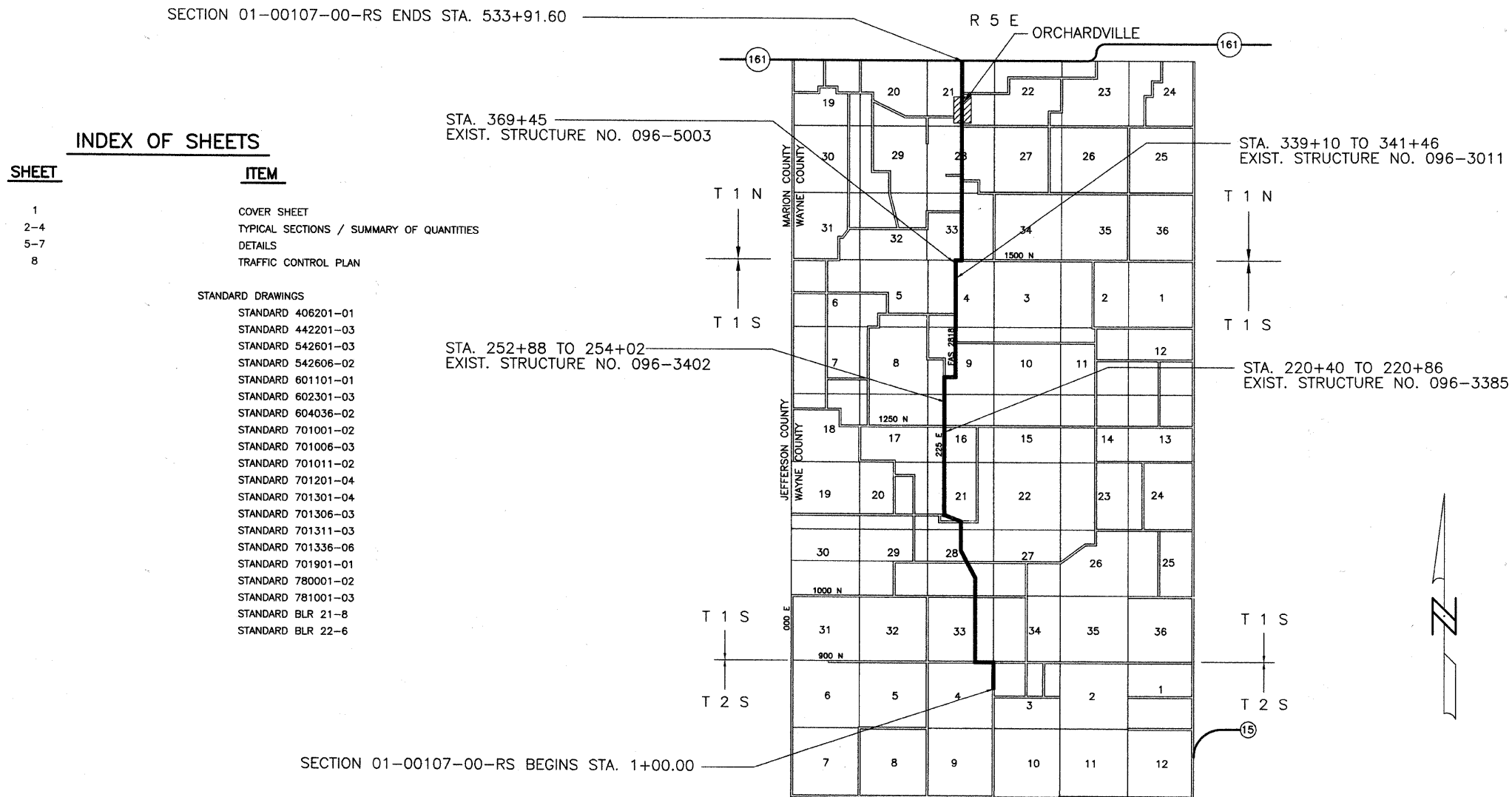
STATE OF ILLINOIS  
DEPARTMENT OF TRANSPORTATION  
PLANS FOR  
PROPOSED LOCAL AGENCY IMPROVEMENT  
FEDERAL-AID SECONDARY PROJECT  
FAS ROUTE 2818 SECTION 01-00107-00-RS  
WAYNE COUNTY PROJ. RS-2818(110) JOB NO. C-97-091-10

ROUTE	SECTION	COUNTY	TOTAL SHEETS	SHEET NO.
FAS 2818	01-00107-00-RS	WAYNE	8	1
CONTRACT NO. 95647		ILLINOIS		



PLAN	0 50' 100'
PROFILE HOR.	0 50' 100'
PROFILE VERT.	0 5' 10'
CROSS SECTIONS	
HOR.	0 5' 10'
VERT.	0 5' 10'

Joint Utility Locating Information for Excavators  
JULIE 1-800-892-0123



**INDEX OF SHEETS**

SHEET	ITEM
1	COVER SHEET
2-4	TYPICAL SECTIONS / SUMMARY OF QUANTITIES
5-7	DETAILS
8	TRAFFIC CONTROL PLAN
STANDARD DRAWINGS	
	STANDARD 406201-01
	STANDARD 442201-03
	STANDARD 542601-03
	STANDARD 542606-02
	STANDARD 601101-01
	STANDARD 602301-03
	STANDARD 604036-02
	STANDARD 701001-02
	STANDARD 701006-03
	STANDARD 701011-02
	STANDARD 701201-04
	STANDARD 701301-04
	STANDARD 701306-03
	STANDARD 701311-03
	STANDARD 701336-06
	STANDARD 701901-01
	STANDARD 780001-02
	STANDARD 781001-03
	STANDARD BLR 21-8
	STANDARD BLR 22-6

SECTION 01-00107-00-RS BEGINS STA. 1+00.00

RURAL MAJOR COLLECTOR  
ADT = 1000  
DESIGN SPEED = 50 MPH

NET LENGTH SECTION 01-00107-00-RS = 53,291.60 Ft. = 10.093 Mi.

*Roger A. Charleston*  
Ill. Reg. Prof. Eng. #29195  
1/11/2011  
Lic. Expires 11/30/2011

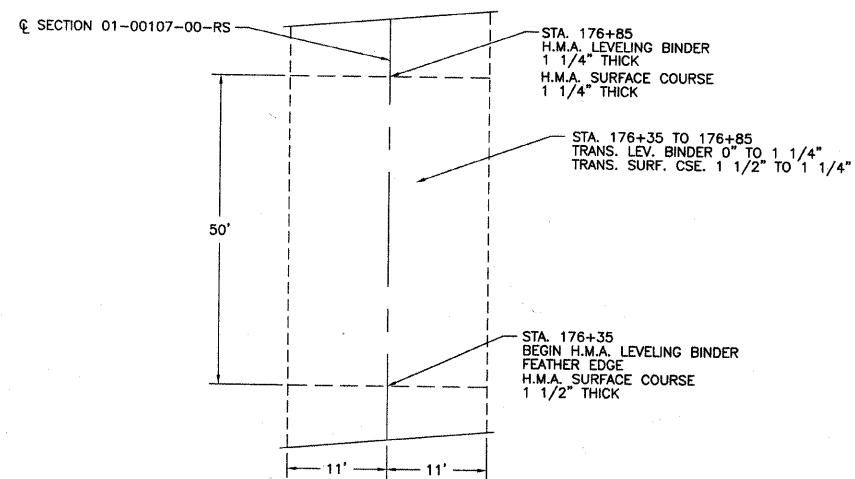
**CHARLESTON ENGINEERING, INC.**  
CONSULTING ENGINEERS  
105 NORTH KITCHELL  
P.O. BOX 397  
OLNEY, ILLINOIS 62450  
(618) 392-0736  
ILLINOIS DEPARTMENT OF PROFESSIONAL REGULATION REGISTRATION #184.003513

APPROVED December 29 2010  
*Arthur J. Probst*  
COUNTY ENGINEER

STATE OF ILLINOIS  
DEPARTMENT OF TRANSPORTATION  
PASSED 1-18 2011  
*Michael Kestel*  
DISTRICT SEVEN ENGINEER OF  
LOCAL ROADS AND STREETS

Releasing For  
Bid Based on  
Limited Review  
1-18 2011  
*Roger L. Bushnell*  
DEPUTY DIRECTOR OF HIGHWAYS  
REGION FOUR ENGINEER

ROUTE	SECTION	COUNTY	TOTAL SHEETS	SHEET NO.
FAS 2818	01-00107-00-RS	WAYNE	8	2
CONTRACT NO. 95647		ILLINOIS		

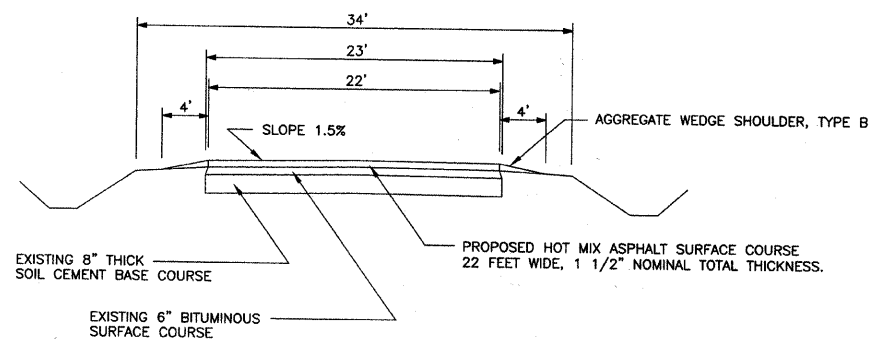


TYPICAL SECTION TRANSITION DETAIL

GENERAL NOTES

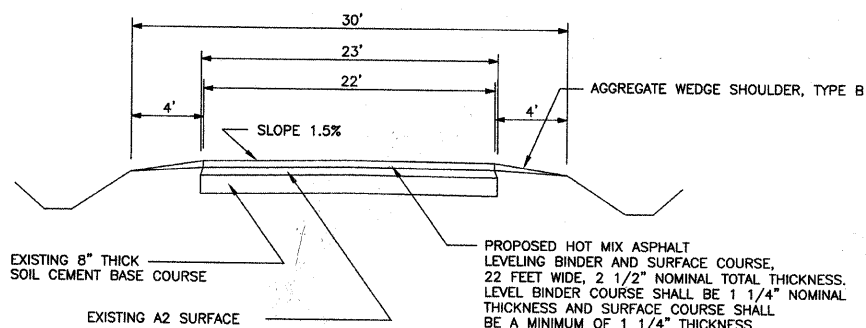
THIS SECTION CONSISTS OF THE CONSTRUCTION OF A 22 FOOT WIDE HOT MIX ASPHALT SURFACE COURSE, MIXTURE "C", N70, ALONG WITH THE REQUIRED BASE COURSE REPAIR AND CONSTRUCTION OF AGGREGATE SHOULDERS. THIS PROJECT SHALL BE IN ACCORDANCE WITH THE PLANS, SPECIAL PROVISIONS, AND "STANDARD SPECIFICATIONS FOR ROAD AND BRIDGE CONSTRUCTION" ADOPTED JANUARY 1, 2007.

THE EXISTING GRADE, ALIGNMENT, DRAINAGE STRUCTURES, BASE, AND SURFACE WERE CONSTRUCTED UNDER THE ILLINOIS DEPARTMENT OF TRANSPORTATION STANDARD SPECIFICATIONS IN EFFECT AT THE TIME OF THEIR INITIAL CONSTRUCTION. THE ORIGINAL DESIGN PLANS ARE ON FILE AND AVAILABLE FOR INSPECTION AT THE WAYNE COUNTY HIGHWAY DEPARTMENT IN FAIRFIELD, ILLINOIS.



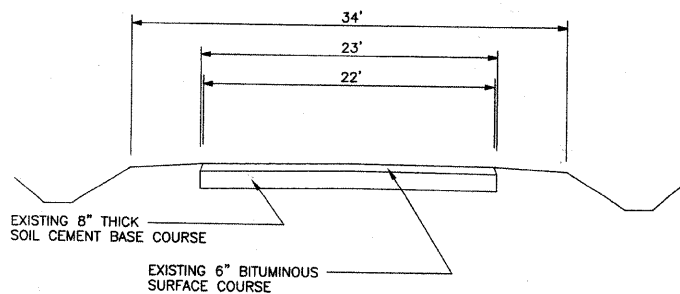
TYPICAL CROSS SECTION

PROPOSED  
STA. 1+00 TO 176+85



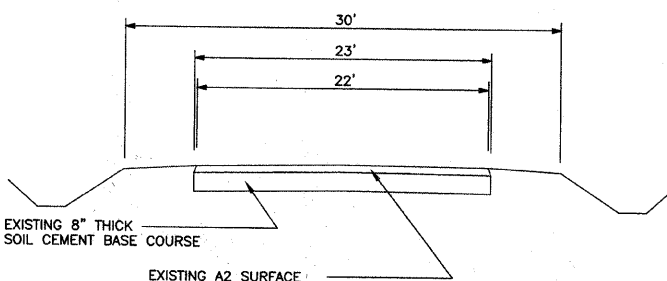
TYPICAL CROSS SECTION

PROPOSED  
STA. 176+85 TO 533+91



TYPICAL CROSS SECTION

EXISTING  
STA. 1+00 TO 176+85



TYPICAL CROSS SECTION

EXISTING  
STA. 176+85 TO 533+91

SUMMARY OF QUANTITIES			
CODE NO.	ITEM	UNIT	QUANTITY
X7240600	REMOVE AND RE-ERECT EXISTING SIGN	EACH	1
Z0004542	HOT-MIX ASPHALT REMOVAL (SPECIAL)	SQ YD	1,470
Z0004560	BRIDGE WEARING SURFACE REMOVAL	SQ YD	500
Z0016702	DETOUR SIGNING	L SUM	1
20200500	EARTH EXCAVATION (WIDENING)	CU YD	36
20800150	TRENCH BACKFILL	CU YD	203
35600708	HOT-MIX ASPHALT BASE COURSE WIDENING, 8"	SQ YD	144
40200800	AGGREGATE SURFACE COURSE, TYPE B	TON	445
40201000	AGGREGATE FOR TEMPORARY ACCESS	TON	32
40600100	BITUMINOUS MATERIALS (PRIME COAT)	GALLON	13,760
40600300	AGGREGATE (PRIME COAT)	TON	260
40600635	LEVELING BINDER (MACHINE METHOD), N70	TON	6,940
40600970	TEMPORARY RAMP	SQ YD	115
40600982	HOT-MIX ASPHALT SURFACE REMOVAL - BUTT JOINT	SQ YD	631
40603315	HOT-MIX ASPHALT SURFACE COURSE, MIX "C", N70	TON	10,827
44004000	PAVED DITCH REMOVAL	FOOT	14
44201741	CLASS D PATCHES, TYPE II, 8 INCH	SQ YD	25
44201745	CLASS D PATCHES, TYPE III, 8 INCH	SQ YD	97
44201747	CLASS D PATCHES, TYPE IV, 8 INCH	SQ YD	4,526
44201821	CLASS D PATCHES, TYPE IV, 14 INCH	SQ YD	264
48102100	AGGREGATE WEDGE SHOULDER, TYPE B	TON	5,760
50104400	CONCRETE HEADWALL REMOVAL	EACH	1
50105220	PIPE CULVERTS REMOVAL	FOOT	2,718
542A0229	PIPE CULVERTS, CLASS A, TYPE 1 24"	FOOT	48
542D0217	PIPE CULVERTS, CLASS D, TYPE 1 12"	FOOT	466
542D0220	PIPE CULVERTS, CLASS D, TYPE 1 15"	FOOT	1,448
542D0223	PIPE CULVERTS, CLASS D, TYPE 1 18"	FOOT	472
542D0226	PIPE CULVERTS, CLASS D, TYPE 1 21"	FOOT	150
542D0229	PIPE CULVERTS, CLASS D, TYPE 1 24"	FOOT	178
542D0247	PIPE CULVERTS, CLASS D, TYPE 1 42"	FOOT	30
542D0277	PIPE CULVERTS, CLASS D, TYPE 1 72"	FOOT	42
54210186	PIPE ELBOW, 18"	EACH	1
X008492	REINFORCED CONCRETE PIPE ELBOW, 18"	EACH	1
54216190	REINFORCED CONCRETE PIPE TEE, 18" PIPE WITH 12" RISER	EACH	2
54248510	CONCRETE COLLAR	CU YD	0.50
59300100	CONTROLLED LOW-STRENGTH MATERIAL	CU YD	43
60100060	CONCRETE HEADWALLS FOR PIPE DRAINS	EACH	1
60100080	FRENCH DRAINS	CU YD	165
60100905	PIPE DRAINS 4"	FOOT	124
60107600	PIPE UNDERDRAINS 4"	FOOT	680
60236200	INLETS, TYPE A, TYPE B GRATE	EACH	2
67100100	MOBILIZATION	L SUM	1
70100450	TRAFFIC CONTROL AND PROTECTION, STANDARD 701201	L SUM	1
70100460	TRAFFIC CONTROL AND PROTECTION, STANDARD 701306	L SUM	1
70100600	TRAFFIC CONTROL AND PROTECTION, STANDARD 701336	L SUM	1
X100216	TRAFFIC CONTROL AND PROTECTION, (SPECIAL)	L SUM	1
70300100	SHORT-TERM PAVEMENT MARKING	FOOT	11,000
70301000	WORK ZONE PAVEMENT MARKING REMOVAL	SQ FT	1,760
* 78000200	THERMOPLASTIC PAVEMENT MARKING - LINE 4"	FOOT	180,535
* 78100100	RAISED REFLECTIVE PAVEMENT MARKER	EACH	780
* 78300200	RAISED REFLECTIVE PAVEMENT MARKER REMOVAL	EACH	300

\* SPECIALTY ITEMS

PAVEMENT DESIGN

DESIGN PERIOD: 20 YEARS  
80,000 POUND DESIGN  
ROAD CLASSIFICATION: RURAL MAJOR COLLECTOR  
A.D.T. YEAR 2010: 800  
S.D.T. YEAR 2020: 900

PAVEMENT STRUCTURE MATERIALS:  
STA. 1+00 TO 176+85  
1 1/2" H.M.A. SURFACE  
STA. 176+85 TO 533+91  
2 1/2" H.M.A. SURFACE

HOT MIX ASPHALT

HOT-MIX ASPHALT SURFACE COURSE, MIXTURE "C" N70  
PG GRADE: PG 64-22  
DESIGN AIR VOIDS: 4.0% @ Ndesign 70  
MIXTURE COMPOSITION: IL-9.5  
FRICTION AGGREGATE: MIXTURE C

LEVELING BINDER (MACHINE METHOD) N70  
PG GRADE: PG 64-22  
DESIGN AIR VOIDS: 4.0% @ Ndesign 70  
MIXTURE COMPOSITION: IL-9.5  
FRICTION AGGREGATE: N/A

CLASS D PATCHES  
PG GRADE: PG 64-22  
DESIGN AIR VOIDS: 4.0% @ Ndesign 70  
MIXTURE COMPOSITION: IL-19.0  
FRICTION AGGREGATE: N/A

HOT-MIX ASPHALT BASE COURSE WIDENING, 8"  
PG GRADE: PG 64-22  
DESIGN AIR VOIDS: 4.0% @ Ndesign 70  
MIXTURE COMPOSITION: IL-19.0  
FRICTION AGGREGATE: N/A

ROUTE	SECTION	COUNTY	TOTAL SHEETS	SHEET NO.
FAS 2818	01-00107-00-RS	WAYNE	8	3
CONTRACT NO. 95647		ILLINOIS		

**ENTRANCE SCHEDULE**

STATION	LOCATION	TYPE	TONS-HMA	TONS-AGG.	WIDTH	DEPTH	RADIUS	TR. BACKFILL	C.I.S.M.	TEMP. AGG.
9+33	LT	SIDE ROAD	5.0	1.0	50	25	25			
25+50	RT	SIDE ROAD	10.0		80	25	25			
31+25	LT	SIDE ROAD	8.0		76	25	25			
55+50	RT	PE	1.0	3.0	28	4	4' FLARE			
56+82	RT	PE	2.8		45	4	4' FLARE	2.5	3.0	
59+06	RT	PE	1.1		32	4	4' FLARE			
70+09	LT	PE	1.5	5.0	42	4	4' FLARE	4.0		
78+41	LT	PE	1.5	5.0	44	4	4' FLARE	2.5		
81+03	LT	PE	2.4	8.0	65	4	4' FLARE	7.9		
85+58	RT	SIDE ROAD	7.0		62	25	25			
85+58	LT	SIDE ROAD	8.0		66	25	25			
86+40	LT	PE	3.5		95	4	4' FLARE	14.5	4.0	
87+94	LT	PE	1.2	4.0	35	4	4' FLARE			
95+18	LT	PE	1.3	4.0	38	4	4' FLARE			
104+36	RT	SIDE ROAD	10.0		63	25	25	11.2	5.0	
114+90	RT	SIDE ROAD	7.0		62	25	25			
114+90	LT	SIDE ROAD	8.0		66	25	25			
130+05	LT	PE	1.0	3.0	26	4	4' FLARE	1.7		
130+60	RT	PE	1.4	4.0	40	4	4' FLARE	5.7		
131+67	RT	PE	3.1	10.0	86	4	4' FLARE			
134+20	LT	PE	1.0	2.0	25	4	4' FLARE			
134+50	RT	PE	1.4	4.0	40	4	4' FLARE			
135+38	LT	PE	2.2		24	4	4' FLARE	1.5	2.0	
140+66	RT	PE	1.4	4.0	40	4	4' FLARE	2.8		
146+90	RT	PE	1.0	3.0	28	4	4' FLARE	2.6		
147+88	RT	PE	1.3	4.0	38	4	4' FLARE	3.6		
149+75	LT	PE	1.0	3.0	30	4	4' FLARE	3.7		
157+39	RT	SIDE ROAD	6.0		60	25	25			
158+50	LT	SIDE ROAD	6.0		55	25	25			
169+87	LT	PE	2.1	7.0	60	4	4' FLARE	5.9		
174+60	RT	PE	1.1	3.0	32	4	4' FLARE	1.8		
189+40	RT	PE	4.2	9.0	70	4	4' FLARE			
201+98	RT	PE		3.0	30			2.8		
203+78	LT	PE	2.3	4.0	40	4	4' FLARE			
209+09	LT	PE	3.7	8.0	62	4	4' FLARE	6.4		
209+68	LT	PE	2.0	2.0	25	4	4' FLARE	1.8		
211+32	LT	PE	2.6	5.0	45	4	4' FLARE	3.1		
211+34	RT	PE		5.0	32			7.8		
213+83	LT	PE	2.0	4.0	35	4	4' FLARE	2.8		
229+12	RT	SIDE ROAD	5.0	3.0	44	25	25			
229+24	LT	SIDE ROAD	9.0		68	25	25			
231+08	LT	PE	1.8	3.0	32	4	4' FLARE	7.0		
235+88	RT	PE	3.8	9.0	64	4	4' FLARE			
237+92	RT	PE	2.9	6.0	50	4	4' FLARE			
242+33	RT	PE	2.0	4.0	36	4	4' FLARE	3.3		
255+91	RT	PE	3.0		20	4	4' FLARE	1.9	3.0	
267+50	LT	SIDE ROAD	18.0	10.0	77	25	25			
269+75	LT	SIDE ROAD	14.0	8.0	66	25	25			
280+10	RT	PE	3.8	8.0	64	4	4' FLARE			
288+84	RT	PE	1.9	4.0	33	4	4' FLARE	3.0		
289+66	RT	PE	2.0	4.0	36	4	4' FLARE	3.9		
304+80	LT	PE	2.6	5.0	44	4	4' FLARE			
305+60	LT	PE	1.5	3.0	28	4	4' FLARE			
307+82	RT	SIDE ROAD	13.0	4.0	36	25	25	2.4		
308+00	LT	PE	1.8	4.0	32	4	4' FLARE	2.4		
319+61	LT	SIDE ROAD	11.0	4.0	32	25	25	2.4		
319+63	RT	SIDE ROAD	8.0	2.0	22	25	25	1.5		
321+20	LT	PE	2.6	5.0	44	4	4' FLARE	1.6		
321+20	RT	PE	1.3	2.0	25	4	4' FLARE			
322+25	RT	PE	3.3	7.0	56	4	4' FLARE			
329+11	RT	PE	3.2	7.0	53	4	4' FLARE	3.1		
329+32	LT	SIDE ROAD	32.0		106	25	25			
333+25	RT	PE	2.9	6.0	50	4	4' FLARE			
336+75	LT	PE	2.9	6.0	50	4	4' FLARE	22.6		
347+77	RT	FE		12.0	39			9.6		
374+50	LT	FE		12.0	37					
375+00	RT	SIDE ROAD	60.0		164	25	25			
386+70	LT	PE	2.4	5.0	42	4	4' FLARE			
399+15	RT	PE	1.8	4.0	32	4	4' FLARE			
399+80	LT	PE	3.3	7.0	56	4	4' FLARE			
415+22	LT	SIDE ROAD	16.0		50	25	25			
415+25	RT	SIDE ROAD	12.0	5.0	28	25	25	7.6		
420+69	LT	PE	1.7	3.0	33	4	4' FLARE	4.0		
429+48	LT	PE	1.5	3.0	28	4	4' FLARE	5.0		
435+10	RT	SIDE ROAD	17.0		74	25	25			
436+95	LT	PE	1.7	3.0	29	4	4' FLARE			
441+70	LT	SIDE ROAD	12.0	5.0	44	25	25			
442+10	RT	SIDE ROAD	14.0	7.0	60	25	25			
455+25	LT	PE	2.0	4.0	35	4	4' FLARE			
465+38	LT	PE	1.3	3.0	25	4	4' FLARE			
472+03	LT	PE	2.0	4.0	36	4	4' FLARE			

**ENTRANCE SCHEDULE**

STATION	LOCATION	TYPE	TONS-HMA	TONS-AGG.	WIDTH	DEPTH	RADIUS	TR. BACKFILL	C.I.S.M.	TEMP. AGG.
472+65	LT	PE	1.5	3.0	27	4	4' FLARE			
479+36	RT	PE	1.5	3.0	27	4	4' FLARE	3.2		
479+75	LT	PE	2.0	4.0	35	4	4' FLARE			
481+29	RT	SIDE ROAD	14.0		55	25	25		2.7	5.0
482+89	LT	PE	1.8	4.0	32	4	4' FLARE			
484+60	RT	PE	3.0	6.0	50	4	4' FLARE			
486+64	RT	PE	1.4	3.0	25	4	4' FLARE			
487+75	RT	PE	3.3	7.0	55	4	4' FLARE	10.0		
488+10	RT	PE	2.1	4.0	36	4	4' FLARE	5.8		
488+20	LT	SIDE ROAD	14.0		62	25	25			
488+84	RT	PE	1.2	2.0	22	4	4' FLARE	1.6		
489+68	LT	PE	2.2	4.0	38	4	4' FLARE			
490+51	RT	PE	7.0	15.0	112	4	4' FLARE			
491+00	LT	PE	6.0	12.0	95	4	4' FLARE			
491+80	RT	PE	4.2	9.0	70	4	4' FLARE			
492+65	LT	PE	2.0	3.0	33	4	4' FLARE			
493+07	RT	PE	1.4	3.0	25	4	4' FLARE			
493+25	LT	PE	2.0	4.0	36	4	4' FLARE			
493+99	RT	PE	1.4	2.0	24	4	4' FLARE			
494+75	RT	PE	4.6	9.0	75	4	4' FLARE			
495+30	LT	PE	2.0	4.0	36	4	4' FLARE			
496+10	RT	PE	1.8	4.0	32	4	4' FLARE			
496+50	RT	PE	2.2	4.0	38	4	4' FLARE			
496+74	LT	PE	1.8	4.0	32	4	4' FLARE	3.6		
497+24	LT	PE	1.7	4.0	30	4	4' FLARE	3.2		
498+16	LT	PE	1.2	2.0	22	4	4' FLARE	1.6		
498+96	RT	SIDE ROAD	15.0		36	25	25			
498+96	LT	SIDE ROAD	14.0		36	25	25	1.9	3.0	
503+35	LT	PE	3.2		38	4	4' FLARE	2.6	3.0	
506+51	RT	PE	1.3	2.0	24	4	4' FLARE	2.5		
507+88	RT	SIDE ROAD	15.0		46	25	25			
512+55	LT	PE	2.5	4.0	42	4	4' FLARE			
516+45	RT	PE	2.4	5.0	32	4	4' FLARE			
530+38	RT	PE	1.7	3.0	30	4	4' FLARE	1.4		
532+22	RT	PE	1.7	3.0	30	4	4' FLARE			
533+31	RT	COMM	12.0		50	25	25	2.0	2.0	
533+75	RT	COMM	17.0		35	25	25	2.0	2.0	
TOTAL			601 TON	445 TON				187 C.Y.	43 C.Y.	32 Ton

**SUMMARY OF HOT MIX ASPHALT**

OPERATION	QUANTITY
1 1/4 INCH NOMINAL LEVELING BINDER	6940
3/4 INCH SURFACE COURSE	56
1 1/4 INCH SURFACE COURSE	6260
1 1/2 INCH SURFACE COURSE	3710
SIDERoadS AND PRIVATE ENTRANCES	601
MAILBOX TURNOUTS	200
TOTAL SURFACE COURSE	10,827

**SCHEDULE OF BRIDGE WEARING SURFACE REMOVAL**

STATION TO STATION	LOCATION	WIDTH	SQ YDS
220+40	220+86	BRIDGE	28' 145
252+88	254+02	BRIDGE	28' 355
	TOTAL		500 SQ. YD.

**SCHEDULE OF THERMOPLASTIC PAVEMENT MARKING -- 4 INCH**

TYPE OF LINE	LENGTH
CENTERLINE STRIPE (YELLOW)	6,020
NPZ STRIPE (YELLOW)	69,340
	75,360 TOTAL YELLOW
EDGE LINE (WHITE)	105,175
	105,175 TOTAL WHITE
	PROJECT TOTAL = 180,535 FOOT

**SCHEDULE OF NO PASSING ZONE PAVEMENT MARKINGS**

**SOUTH BOUND -- NO PASSING ZONE PAVEMENT MARKINGS**

STATION TO STATION	LOCATION	LENGTH
1+00	13+90	SOUTH BOUND 1290
19+00	50+00	SOUTH BOUND 3100
104+05	143+55	SOUTH BOUND 3950
151+20	199+80	SOUTH BOUND 4860
210+80	216+30	SOUTH BOUND 550
236+30	253+80	SOUTH BOUND 1750
258+50	302+00	SOUTH BOUND 4350
309+00	349+00	SOUTH BOUND 4000
386+50	415+50	SOUTH BOUND 2900
421+50	460+50	SOUTH BOUND 3900
480+00	507+50	SOUTH BOUND 2750
TOTAL		33,400 FOOT

**NORTH BOUND -- NO PASSING ZONE PAVEMENT MARKINGS**

STATION TO STATION	LOCATION	LENGTH
1+00	38+00	NORTH BOUND 6580
92+10	134+95	NORTH BOUND 4285
141+00	206+80	NORTH BOUND 4630
220+30	283+75	NORTH BOUND 6345
291+00	332+00	NORTH BOUND 4100
369+50	440+00	NORTH BOUND 7050
448+50	453+00	NORTH BOUND 450
464+50	489+50	NORTH BOUND 2500
TOTAL		35,940 FOOT

CLASS A PIPE CULVERT SCHEDULE

PIPE CULVERTS, CLASS A, TYPE 1 24"

STATION	OFFSET	REPL. LENGTH	REM. LENGTH
415+25	RT	24 FOOT	24 FOOT
415+25	RT	24 FOOT	24 FOOT
	TOTAL	48 FOOT	48 FOOT

CLASS D PIPE CULVERT SCHEDULE

ANNULAR, RIVETED, GALVANIZED STEEL PIPE

PIPE CULVERTS, CLASS D, TYPE 1 12"

STATION	OFFSET	REPL. LENGTH	REM. LENGTH
485+93	LT	30 FOOT	28 FOOT
496+74	LT	30 FOOT	30 FOOT
497+24	LT	30 FOOT	30 FOOT
498+16	LT	30 FOOT	22 FOOT
504+94	LT	286 FOOT	285 FOOT
513+88	LT	30 FOOT	30 FOOT
528+89	LT	30 FOOT	22 FOOT
	TOTAL	466 FOOT	447 FOOT

PIPE CULVERTS, CLASS D, TYPE 1 15"

STATION	OFFSET	REPL. LENGTH	REM. LENGTH
56+82	RT	30 FOOT	30 FOOT
70+09	LT	30 FOOT	30 FOOT
94+70	RT	30 FOOT	30 FOOT
130+05	LT	30 FOOT	30 FOOT
130+45	RT	70 FOOT	69 FOOT
140+66	RT	32 FOOT	32 FOOT
146+90	RT	30 FOOT	30 FOOT
147+88	RT	30 FOOT	30 FOOT
149+75	LT	30 FOOT	29 FOOT
182+81	RT	30 FOOT	30 FOOT
189+41	RT	30 FOOT	21 FOOT
201+98	RT	30 FOOT	29 FOOT
209+68	LT	30 FOOT	20 FOOT
211+32	LT	30 FOOT	30 FOOT
213+83	LT	38 FOOT	38 FOOT
231+08	LT	32 FOOT	31 FOOT
239+74	LT	30 FOOT	20 FOOT
242+46	RT	60 FOOT	60 FOOT
255+91	RT	30 FOOT	30 FOOT
278+59	RT	30 FOOT	30 FOOT
288+84	RT	30 FOOT	30 FOOT
289+66	RT	30 FOOT	30 FOOT
302+83	LT	30 FOOT	22 FOOT
304+80	LT	30 FOOT	22 FOOT
307+82	RT	30 FOOT	29 FOOT
308+00	LT	30 FOOT	30 FOOT
319+61	LT	30 FOOT	30 FOOT
319+63	RT	30 FOOT	30 FOOT
321+20	LT	30 FOOT	29 FOOT
324+16	RT	30 FOOT	30 FOOT
329+11	RT	36 FOOT	36 FOOT
420+69	LT	34 FOOT	33 FOOT
438+70	RT	40 FOOT	40 FOOT
487+88	RT	124 FOOT	123 FOOT
498+96	LT	30 FOOT	30 FOOT
503+35	LT	30 FOOT	30 FOOT
528+76	RT	30 FOOT	30 FOOT
530+38	RT	30 FOOT	30 FOOT
	TOTAL	1336 FOOT	1283 FOOT

CLASS D PIPE CULVERT SCHEDULE

CORRUGATED POLYVINYL CHLORIDE PIPE WITH A SMOOTH INTERIOR

PIPE CULVERTS, CLASS D, TYPE 1 15"

STATION	OFFSET	REPL. LENGTH	REM. LENGTH
134+96	LT	112 FOOT	111 FOOT

PIPE CULVERTS, CLASS D, TYPE 1 18"

STATION	OFFSET	REPL. LENGTH	REM. LENGTH
90+01	LT	30 FOOT	30 FOOT
174+51	RT	44 FOOT	44 FOOT
211+34	RT	42 FOOT	42 FOOT
381+80	LT	30 FOOT	28 FOOT
429+48	LT	30 FOOT	30 FOOT
442+19	RT	82 FOOT	82 FOOT
479+36	RT	30 FOOT	25 FOOT
481+29	RT	44 FOOT	40 FOOT
506+51	RT	30 FOOT	20 FOOT
521+03	LT	30 FOOT	30 FOOT
530+38	RT	30 FOOT	19 FOOT
	TOTAL	422 FOOT	390 FOOT

PIPE CULVERTS, CLASS D, TYPE 1 21"

STATION	OFFSET	REPL. LENGTH	REM. LENGTH
71+95	RT	30 FOOT	30 FOOT
78+41	LT	30 FOOT	30 FOOT
79+44	LT	30 FOOT	30 FOOT
81+03	LT	60 FOOT	60 FOOT
	TOTAL	150 FOOT	150 FOOT

PIPE CULVERTS, CLASS D, TYPE 1 24"

STATION	OFFSET	REPL. LENGTH	REM. LENGTH
86+40	LT	88 FOOT	88 FOOT
214+33	RT	30 FOOT	25 FOOT
374+50	LT	30 FOOT	30 FOOT
415+25	RT	30 FOOT	24 FOOT
	TOTAL	178 FOOT	167 FOOT

PIPE CULVERTS, CLASS D, TYPE 1 42"

STATION	OFFSET	REPL. LENGTH	REM. LENGTH
347+77	RT	30 FOOT	30 FOOT
	TOTAL	30 FOOT	30 FOOT

PIPE CULVERTS, CLASS D, TYPE 1 72"

STATION	OFFSET	REPL. LENGTH	REM. LENGTH
348+03	LT	42 FOOT	42 FOOT
	TOTAL	42 FOOT	42 FOOT

PIPE CULVERTS, CLASS D, TYPE 1 18"

STATION	OFFSET	REPL. LENGTH	REM. LENGTH
104+36	RT	50 FOOT	50 FOOT

MAILBOX TURNOUT SCHEDULE

STATION	LOCATION	TONS H.M.A.
1+10	LT	3.5
59+35	RT	3.5
70+05	RT	3.5
78+40	RT	3.5
81+65	RT	3.5
87+80	LT	3.5
95+25	RT	3.5
130+35	RT	3.5
134+90	LT	3.5
148+20	RT	3.5
174+50	RT	3.5
210+40	RT	6.0
236+25	RT	6.0
288+70	RT	6.0
304+25	RT	6.0
319+25	RT	6.0
322+60	RT	6.0
328+90	RT	6.0
387+25	RT	6.0
399+95	RT	6.0
429+55	RT	6.0
441+70	RT	6.0
472+00	RT	6.0
472+55	RT	6.0
479+75	RT	6.0
483+10	LT	6.0
484+85	RT	6.0
487+45	RT	6.0
489+45	LT	6.0
490+10	LT	6.0
493+55	LT	6.0
494+10	LT	6.0
495+50	LT	6.0
497+15	RT	6.0
499+30	RT	6.0
505+45	LT	6.0
512+75	LT	6.0
516+60	LT	6.0
	TOTAL	200 TON

ROUTE	SECTION	COUNTY	TOTAL SHEETS	SHEET NO.
FAS 2818	01-00107-00-RS	WAYNE	8	4
CONTRACT NO. 95647		ILLINOIS		

SCHEDULE OF CLASS D PAVEMENT PATCHES

TYPE II, 8 INCH

STATION TO STATION	LOCATION	WIDTH	SQ. YDS.	
203+81	204+00	RT	5'	11
267+46	267+63	LT	8'	14
	TOTAL			25 SQ. YD.

TYPE III, 8 INCH

STATION TO STATION	LOCATION	WIDTH	SQ. YDS.	
202+02	202+34	RT	6'	21
273+97	274+49	RT	4'	19
278+76	279+22	LT	5'	21
332+11	333+01	RT	5'	21
510+60	511+03	LT	4'	15
	TOTAL			97 SQ. YD.

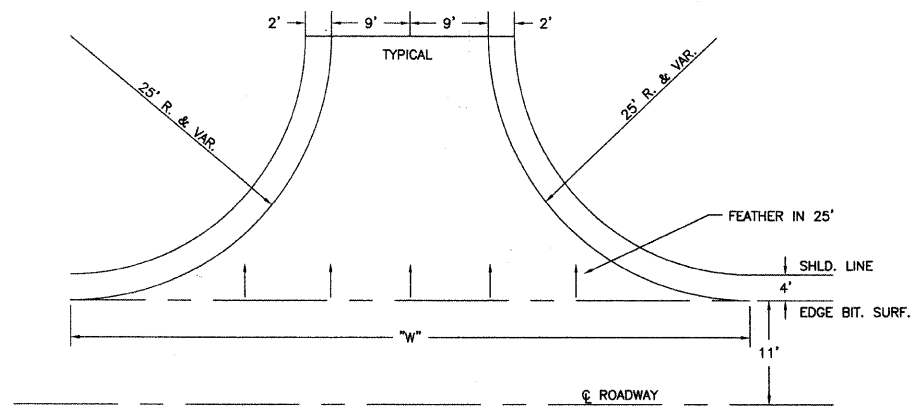
TYPE IV, 8 INCH

STATION TO STATION	LOCATION	WIDTH	SQ. YDS.	
179+28	179+87	LT	8'	50
190+07	190+62	RT	8'	50
192+66	193+75	LT	8'	99
233+95	234+33	RT	8'	34
259+18	259+95	LT & RT	14'	113
264+79	265+29	LT & RT	16'	71
266+50	268+05	RT	8'	113
267+98	268+44	LT	6'	31
273+92	274+60	LT	5'	34
275+61	276+30	LT	6'	44
278+93	279+25	RT	8'	28
280+10	280+46	LT	10'	29
281+26	282+15	LT	VAR	52
283+85	284+21	LT & RT	18'	64
285+11	286+82	RT	7'	130
288+85	289+58	RT	7'	58
295+45	297+71	RT	11'	259
298+61	299+53	LT	9'	96
304+36	305+40	LT	9'	97
305+81	306+83	RT	9'	92
308+65	309+58	RT	10'	85
317+42	318+93	LT	7'	114
320+34	321+70	RT	9'	134
323+37	324+53	RT	8'	57
349+56	349+82	LT & RT	VAR	31
368+43	368+83	LT & RT	VAR	42
369+45	370+91	LT & RT	21'	110
376+79	377+44	LT	13'	70
377+27	379+22	RT	VAR	158
383+12	383+64	RT	9'	52
384+15	385+80	LT	6'	81
385+94	388+30	RT	8'	67
387+43	389+00	LT	10'	176
389+85	394+95	LT & RT	VAR	131
394+23	395+22	LT & RT	11'	124
405+98	407+02	LT & RT	VAR	150
417+59	420+38	LT & RT	VAR	465
422+56	422+87	LT & RT	VAR	44
429+11	430+13	LT & RT	VAR	187
430+86	431+95	RT	11'	118
433+44	435+60	RT	9'	167
437+47	438+12	LT	7'	54
452+34	454+78	RT	9'	245
517+32	518+02	RT	7'	52
520+78	521+32	LT & RT	11'	68
	TOTAL			4526 SQ. YD.

TYPE IV, 14 INCH

STATION TO STATION	LOCATION	WIDTH	SQ. YDS.	
99+50	100+50	RT	5'	56
112+80	113+20	RT	6'	27
116+80	117+30	RT	6'	34
176+19	176+85	LT	11'	81
176+49	177+03	RT	11'	66
	TOTAL			264 SQ. YD.

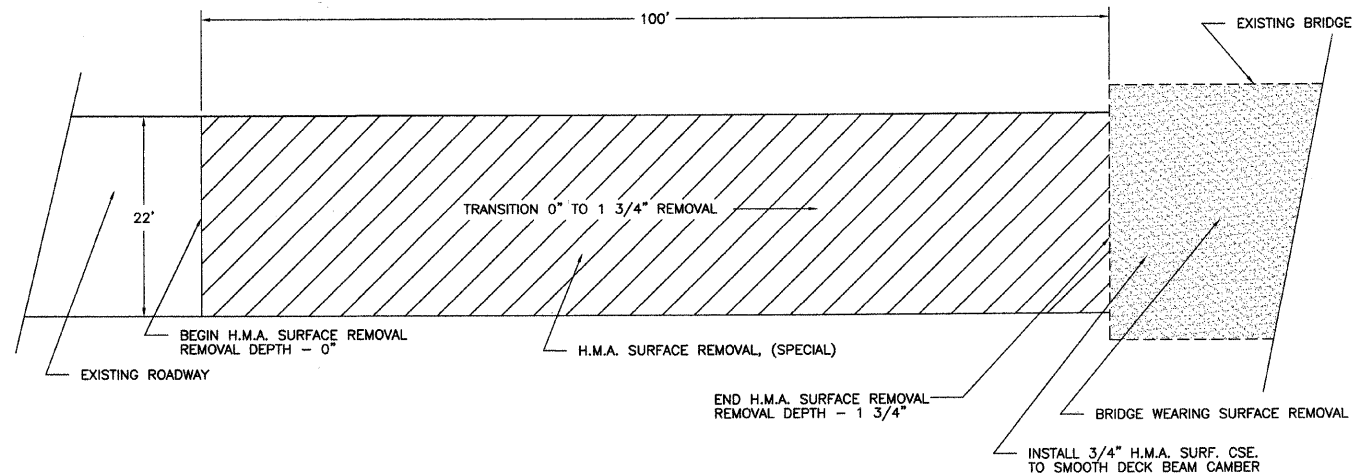
ROUTE	SECTION	COUNTY	TOTAL SHEETS	SHEET NO.
FAS 2818	01-00107-00-RS	WAYNE	8	5
CONTRACT NO. 95647		ILLINOIS		



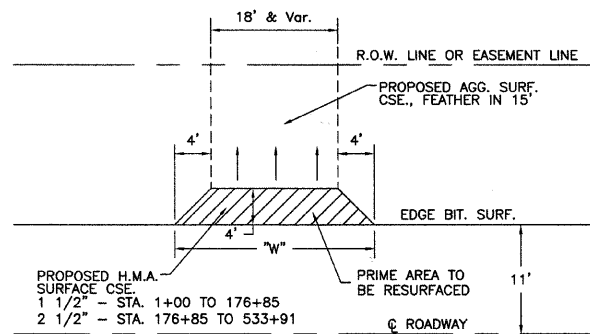
SIDEROAD AND COMMERCIAL ENTRANCE DETAIL

H.M.A. REMOVAL (SPECIAL)	SQ YD
STA. 219+40 TO 220+40	245
STA. 220+86 TO 221+86	245
STA. 251+88 TO 252+88	245
STA. 254+02 TO 255+02	245
STA. 338+10 TO 339+10	245
STA. 341+46 TO 342+46	245
<b>TOTAL</b>	<b>1,470 SQ YD</b>

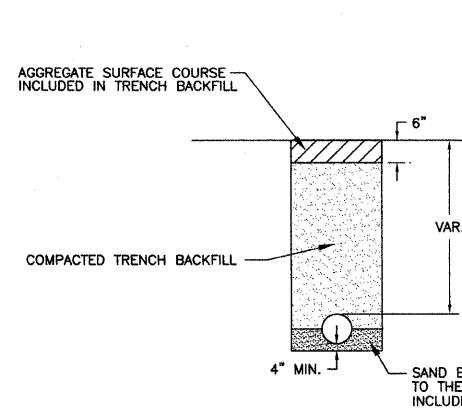
BRIDGE WEARING SURFACE REMOVAL	SQ YD
STA. 220+40 TO 220+86	145
STA. 252+88 TO 254+02	355
<b>TOTAL</b>	<b>500 SQ YD</b>



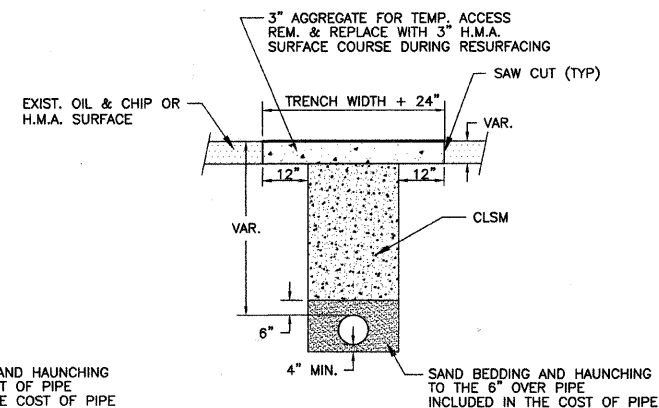
H.M.A. REMOVAL (SPECIAL) DETAIL



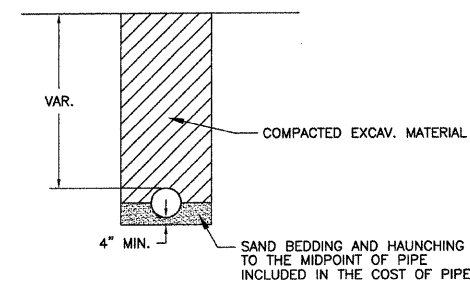
ENTRANCE DETAIL



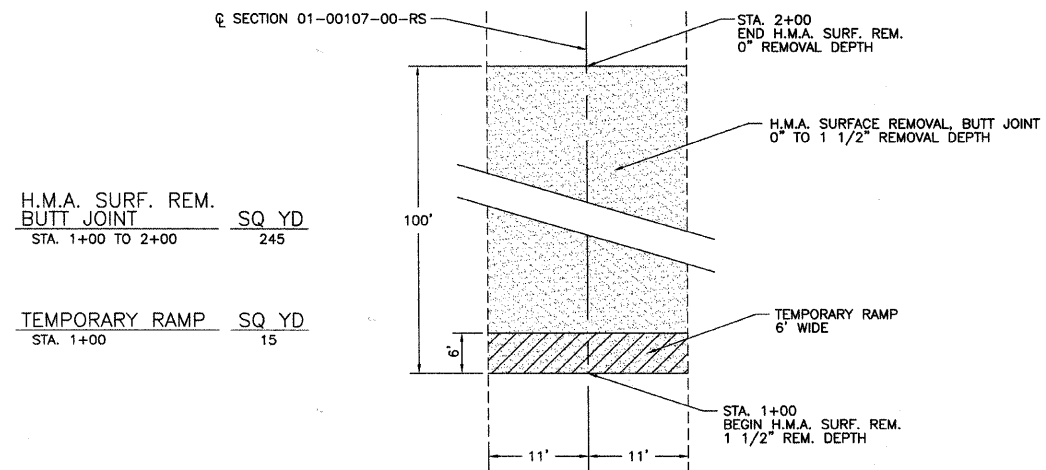
TRENCH DETAIL  
THROUGH AGGREGATE SURFACES



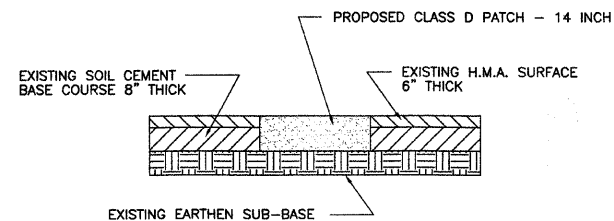
TRENCH DETAIL  
THROUGH BITUMINOUS SURFACES



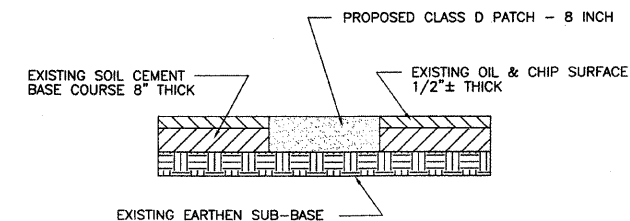
TRENCH DETAIL  
THROUGH GRASS SURFACES



H.M.A. REMOVAL DETAIL - SOUTH END



STA. 1+00 TO 176+85



STA. 176+85 TO 533+91

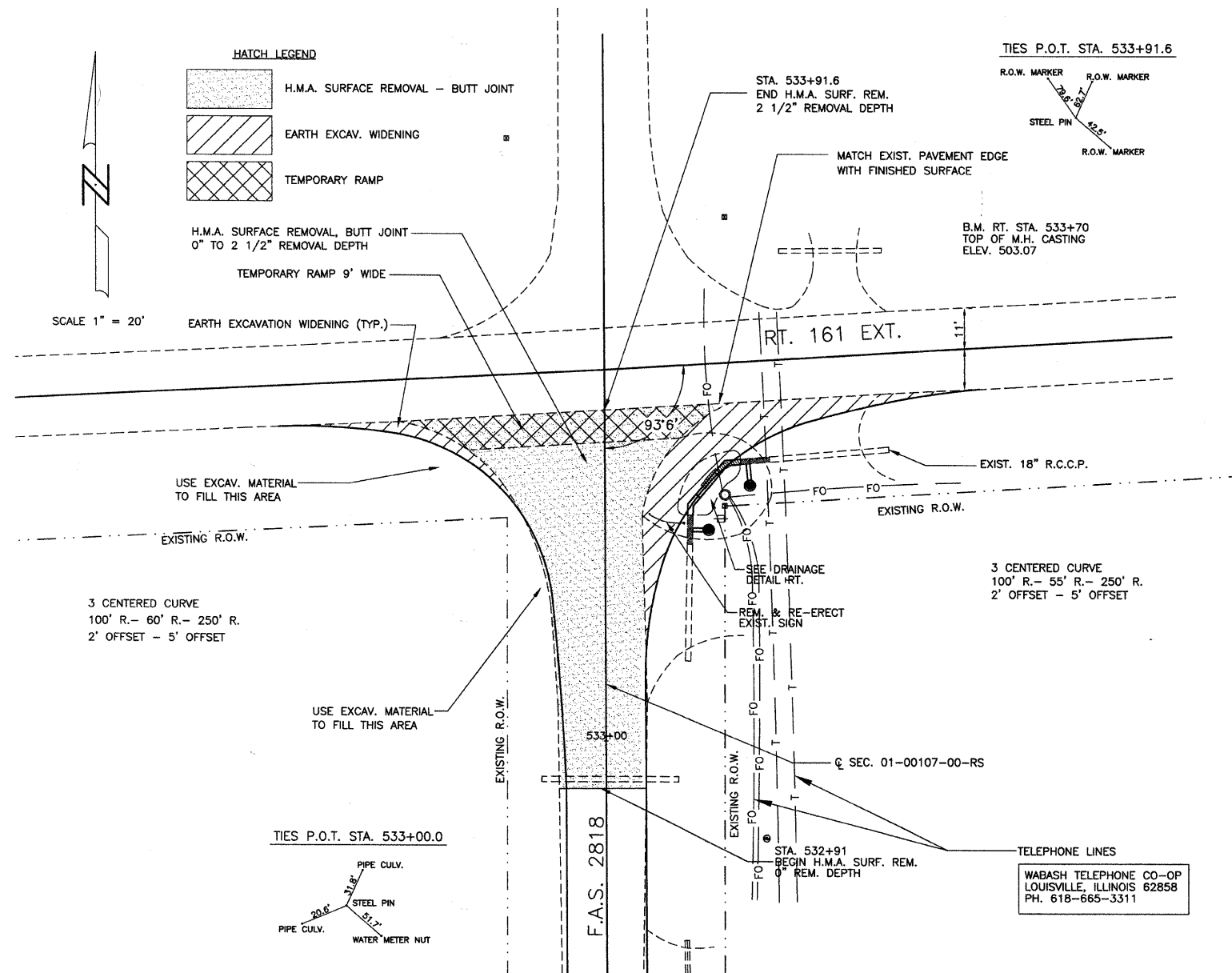
PATCHING DETAIL

ROUTE	SECTION	COUNTY	TOTAL SHEETS	SHEET NO.
FAS 2818	01-00107-00-RS	WAYNE	8	6
CONTRACT NO. 95647		ILLINOIS		

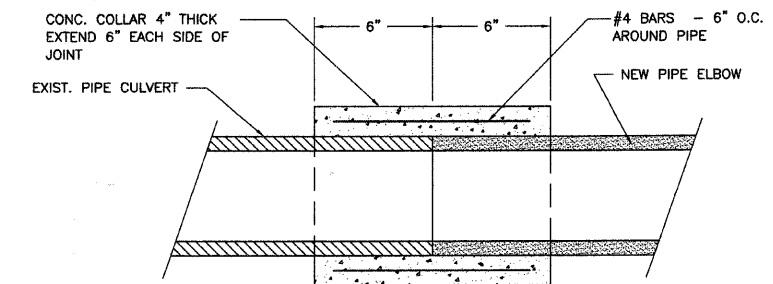
PIPE CULVERT REMOVAL RT. STA. 533+43 TO 533+56	FOOT 16	EARTH EXCAVATION WIDENING STA. 532+91 TO 533+91	CU YD 36	PAVED DITCH REMOVAL RT. STA. 533+65	FOOT 14
CONCRETE HEADWALL REMOVAL RT. STA. 533+51	EACH 1	H.M.A. BASE CSE. WIDENING, 8" STA. 532+91 TO 533+91	SQ YD 144	H.M.A. SURF. REM., BUTT JOINT STA. 532+91 TO 533+91	SQ YD 386
TEMPORARY RAMP STA. 533+91	SQ YD 100	REM. & RE-ERECT EXIST. SIGN RT. STA. 533+55	EACH 1		

PIPE CULVERTS - R.C.C.P.			
LOCATION	TY-1,12"	TY-1,18"	TR.B'FILL
1 TO 2			2.1
2 TO 3			2.1
4 TO 5	5	8	5.2
5 TO 7			2.6
7 TO 10			1.9
8 TO 9	3		2.1
TOTALS	8	8	16.0

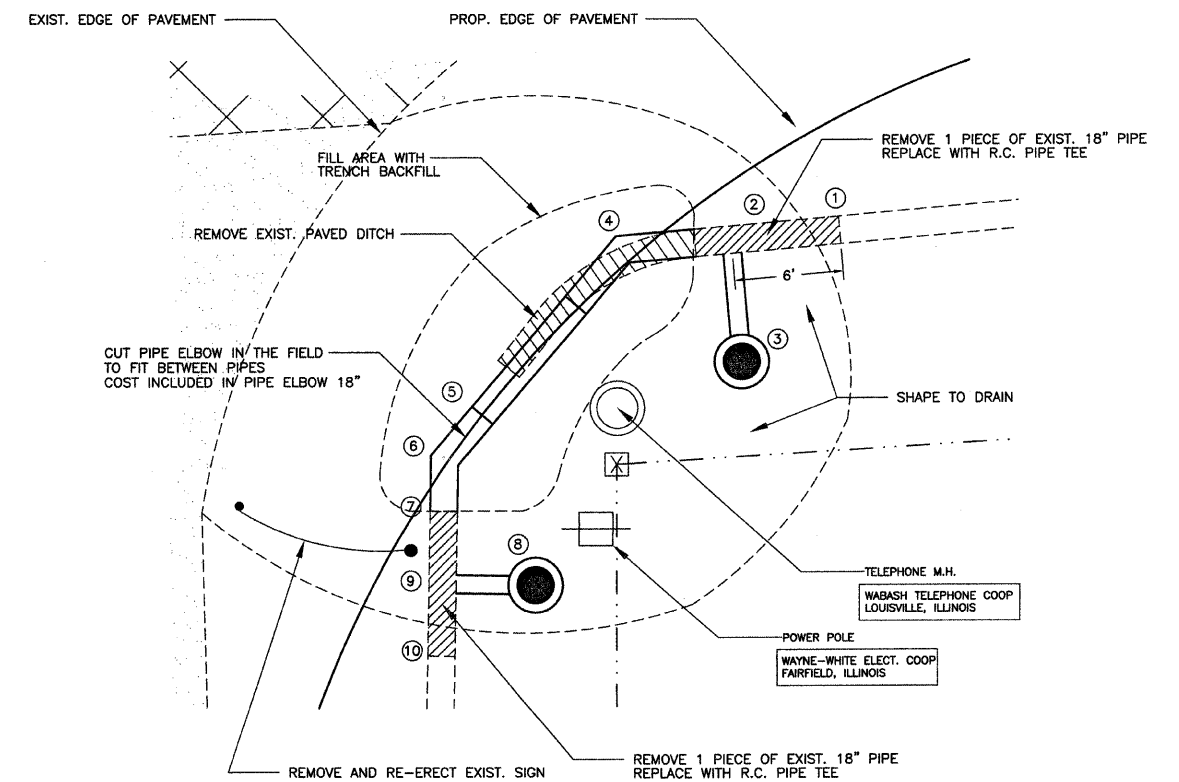
DRAINAGE STRUCTURES					
NO.	DIST.	STA.	ITEM	GR.	INV.
1	47' RT.	533+66	EXISTING 18" PIPE CULVERT		500.75
2	41' RT.	533+66	R.C. PIPE TEE 18 P. 12 R.	503.45	500.35
3	42' RT.	533+59	INLET, TY-A W/TY-B GR.		500.65
4	35' RT.	533+65	R.C. PIPE ELBOW 45'		500.19
5	26' RT.	533+57	CONCRETE COLLAR		500.06
6	25' RT.	533+53	PIPE ELBOW 18" - 40'		500.03
7	24' RT.	533+51	CONCRETE COLLAR		500.00
8	30' RT.	533+47	INLET, TY-A W/TY-B GR.	503.10	500.27
9	24' RT.	533+47	R.C. PIPE TEE 18 P. 12 R.		499.97
10	24' RT.	533+43	EXISTING 18" PIPE CULVERT		499.95



INTERSECTION DETAIL - RT. 161 EXT.



CONCRETE COLLAR DETAIL



DRAINAGE DETAIL

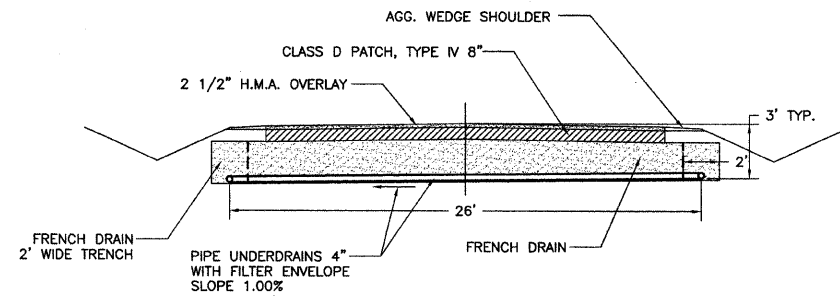
ROUTE	SECTION	COUNTY	TOTAL SHEETS	SHEET NO.
FAS 2818	01-00107-00-RS	WAYNE	8	7
CONTRACT NO. 95647		ILLINOIS		

FRENCH DRAINS \_\_\_\_\_ CU YD  
 STA. 428+90 TO 430+40 165

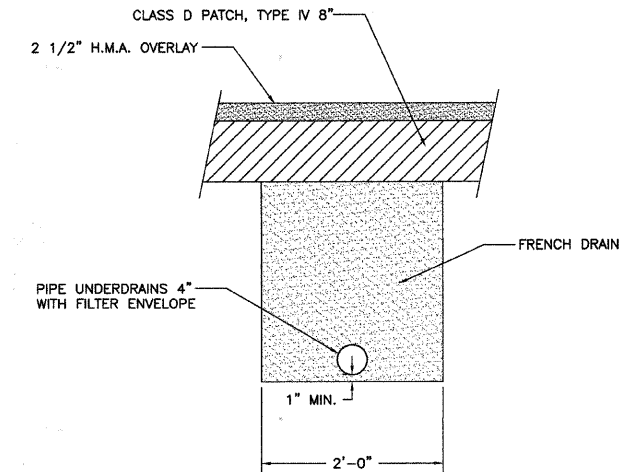
PIPE DRAINS 4" \_\_\_\_\_ FOOT  
 LT. STA. 427+68 TO 428+90 124

PIPE UNDERDRAINS 4" \_\_\_\_\_ FOOT  
 STA. 428+90 TO 430+40 680

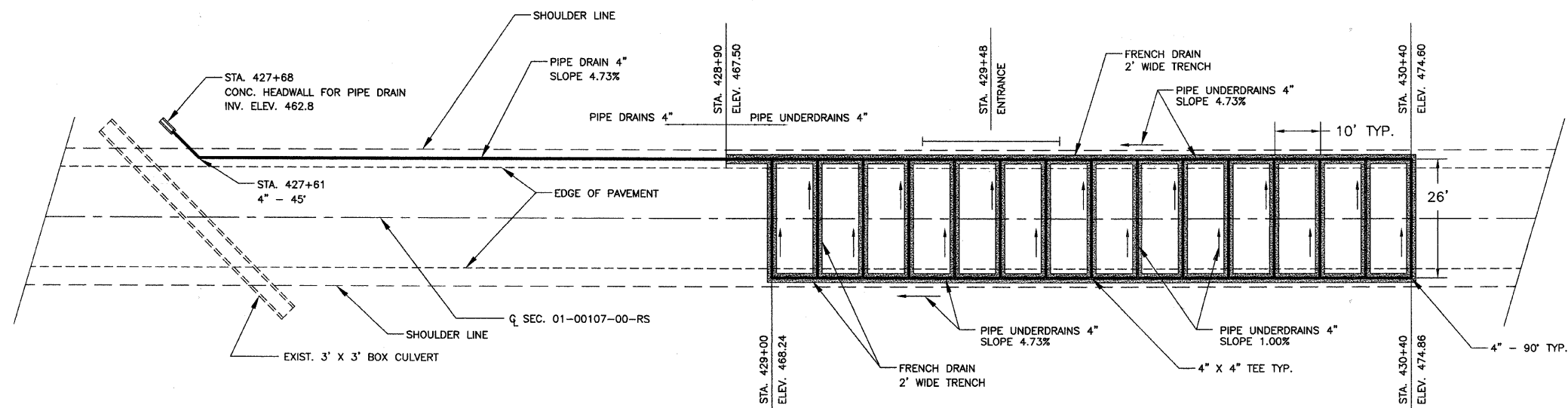
CONCRETE HEADWALL FOR PIPE DRAINS \_\_\_\_\_ EACH  
 LT. STA. 427+68 1



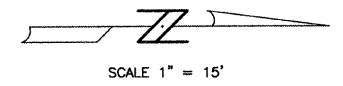
FRENCH DRAIN - SECTION ACROSS ROADWAY



FRENCH DRAIN - TRENCH DETAIL



FRENCH DRAIN PLAN

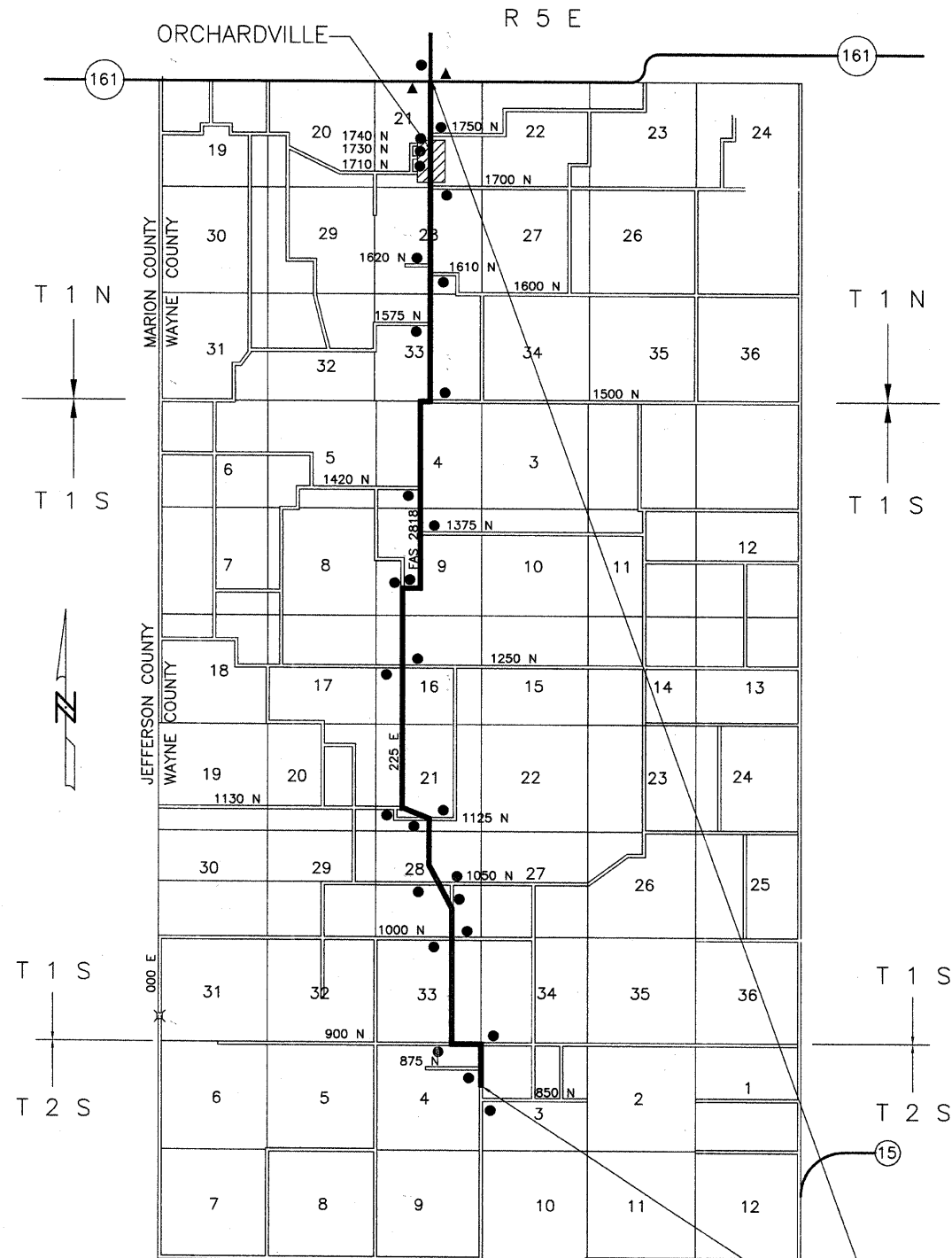


FRENCH DRAIN DETAILS

ROUTE	SECTION	COUNTY	TOTAL SHEETS	SHEET NO.
FAS 2818	01-00107-00-RS	WAYNE	8	8
CONTRACT NO. 95647		ILLINOIS		

LEGEND

- ROAD CONSTRUCTION AHEAD
- ▲ ROAD CONSTRUCTION AHEAD WITH W1-6 SIGN POINTING SOUTH

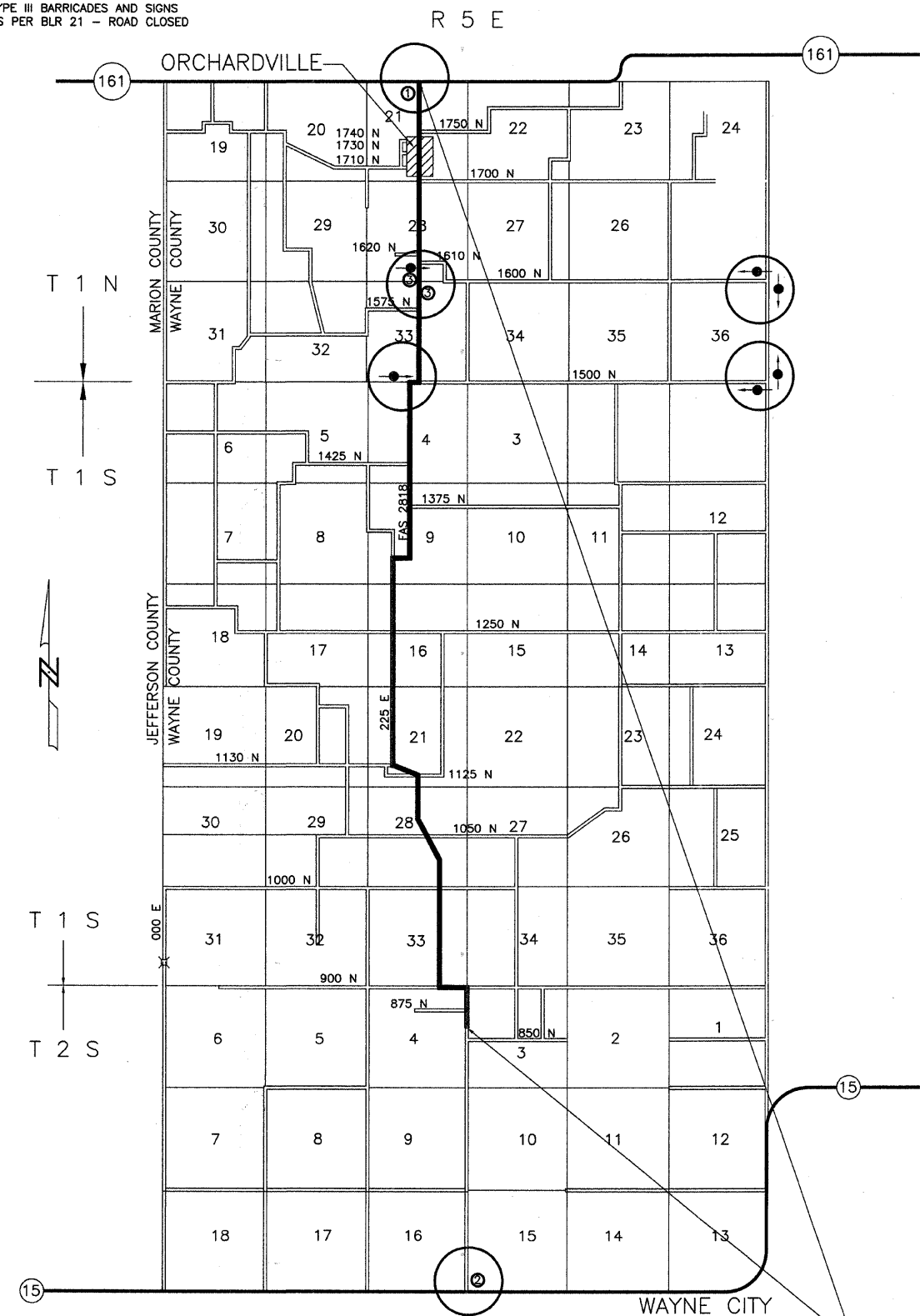


SECTION 01-00107-00-RS = 53,291.60 Ft. = 10.093 Mi.  
WAYNE COUNTY

TRAFFIC CONTROL PLAN

LEGEND

- CAR AND LIGHT TRUCK DETOUR SIGN AND ARROW
- ① TYPE III BARRICADE W/ R11-3 SIGN ROAD CLOSED 2 MILES AHEAD LOCAL TRAFFIC ONLY SEMI-TRAILERS PROHIBITED
- ② TYPE III BARRICADE W/ R11-3 SIGN ROAD CLOSED 10 MILES AHEAD LOCAL TRAFFIC ONLY SEMI-TRAILERS PROHIBITED
- ③ TYPE III BARRICADES AND SIGNS AS PER BLR 21 - ROAD CLOSED



SECTION 01-00107-00-RS = 53,291.60 Ft. = 10.093 Mi.  
WAYNE COUNTY

DETOUR SIGN MAP