

| | | | | |
|-------------|----------|----------|--------------------|-----------|
| F.A.S. RTE. | SECTION | COUNTY | TOTAL SHEETS | SHEET NO. |
| 1908 | (13B)I-2 | JACKSON | 71 | 1 |
| | | ILLINOIS | CONTRACT NO. 98898 | |

STATE OF ILLINOIS
DEPARTMENT OF TRANSPORTATION
DIVISION OF HIGHWAYS

**PROPOSED
HIGHWAY PLANS**

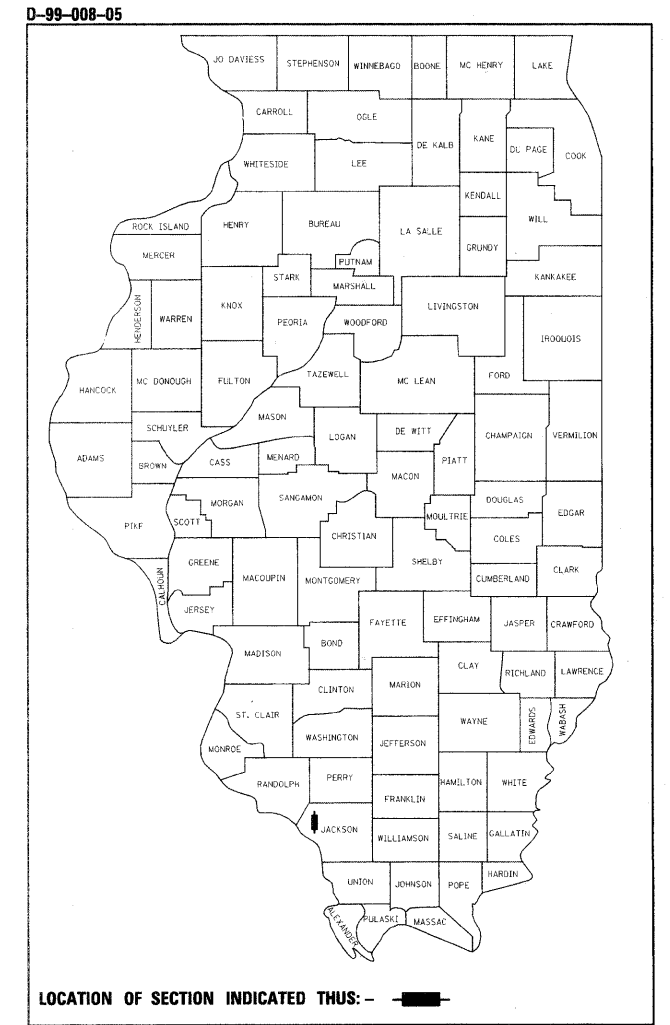
F.A.S. ROUTE 1908 (ILLINOIS 151)
SECTION (13B)I-2
PROJECT NO. ACBR5-1908(002)
STRUCTURE REPLACEMENT OVER
KINKAID LAKE
JACKSON COUNTY

C-99-057-10

FOR INDEX OF SHEETS, SEE SHEET NO. 2
FOR SUMMARY OF QUANTITIES, SEE SHEET NO. 3

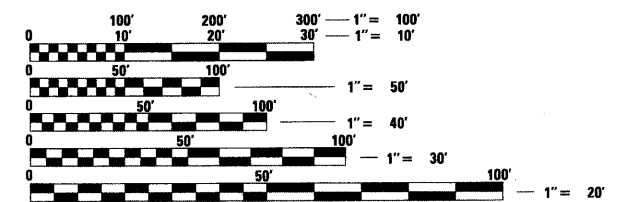
HIGHWAY CLASSIFICATION

F.A.S. RTE 1908 - IL RTE 151
ADT = 1250 (2010); 1530 (2030)
DHV = 150 (2010); 185 (2030)
35% TRUCKS
FUNCTIONAL CLASS: MAJOR ARTERIAL (NON-URBAN)
DESIGN SPEED: 55 MPH
POSTED SPEED: 55 MPH



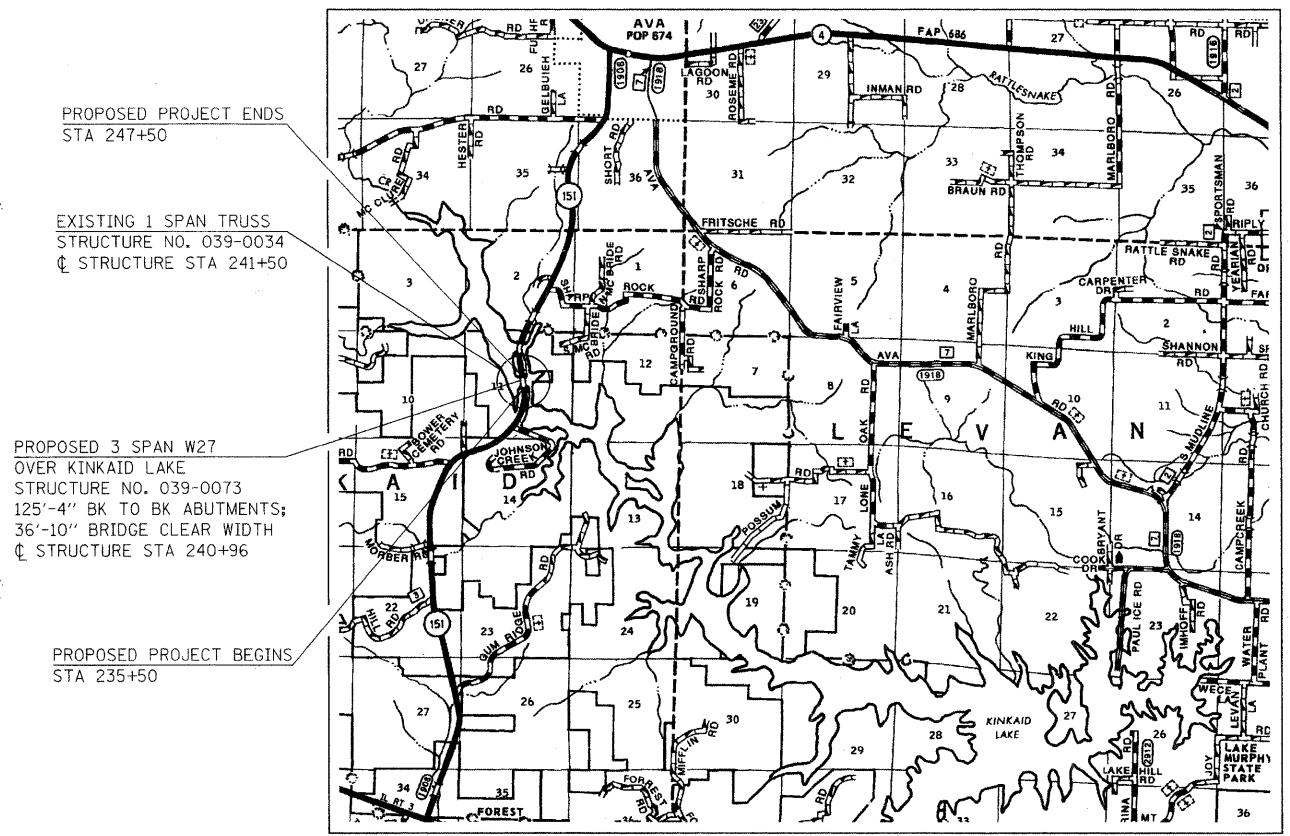
LOCATION OF SECTION INDICATED THUS: - [black rectangle] -

KINKAID TOWNSHIP



FULL SIZE PLANS HAVE BEEN PREPARED USING STANDARD ENGINEERING SCALES. REDUCED SIZED PLANS WILL NOT CONFORM TO STANDARD SCALES. IN MAKING MEASUREMENTS ON REDUCED PLANS, THE ABOVE SCALES MAY BE USED.

J.U.L.I.E.
JOINT UTILITY LOCATION INFORMATION FOR EXCAVATION
1-800-892-0123
OR 811



PROPOSED PROJECT ENDS
STA 247+50

EXISTING 1 SPAN TRUSS
STRUCTURE NO. 039-0034
CL STRUCTURE STA 241+50

PROPOSED 3 SPAN W27
OVER KINKAID LAKE
STRUCTURE NO. 039-0073
125'-4" BK TO BK ABUTMENTS;
36'-10" BRIDGE CLEAR WIDTH
CL STRUCTURE STA 240+96

PROPOSED PROJECT BEGINS
STA 235+50

ROADWAY LENGTH = 1,074.67 FT
BRIDGE LENGTH = 125.33 FT

NET LENGTH OF PROJECT = 1200 FT
GROSS LENGTH OF PROJECT = 1200 FT

PROJECT ENGINEER: DAVID PICHE (618) 549-2171
DESIGNER: MIKE STEPHENSON

STATE OF ILLINOIS
DEPARTMENT OF TRANSPORTATION
DIVISION OF HIGHWAYS

SUBMITTED Dec 10 20 10
May 1 2011
DEPUTY DIRECTOR OF HIGHWAYS, REGION ENGINEER

February 4 20 11
Scott E. Stitt P.E.
acting ENGINEER OF DESIGN AND ENVIRONMENT

February 4 20 11
Christine M. Reed
DIRECTOR OF HIGHWAYS, CHIEF ENGINEER

**PRINTED BY THE AUTHORITY
OF THE STATE OF ILLINOIS**

CONTRACT NO. 98898