

GENERAL NOTES

Fasteners shall be AASHTO M164 Type 1, mechanically galvanized bolts. Bolts 7/8 in. ϕ , holes 15/16 in. ϕ , unless otherwise noted.

Calculated weight of Structural Steel = 73,940 lbs. of Grade 50 and 5,130 lbs. of Grade 36.

No field welding is permitted except as specified in the contract documents.

Reinforcement bars shall conform to the requirements of ASTM A 706 Gr 60. See Special Provisions

Reinforcement bars designated (E) shall be epoxy coated.

Bearing seat surfaces shall be constructed or adjusted to their designated elevations within a tolerance of 1/8 inch (0.01 ft.). Adjustment shall be made either by grinding the surface or by shimming the bearings.

The existing structural steel coating contains lead. The Contractor shall take appropriate precautions to deal with the presence of lead on this project.

The Inorganic Zinc Rich Primer / Acrylic / Acrylic Paint System shall be used for shop and field painting of new structural steel except where otherwise noted.

The color of the final finish coat for all interior steel surfaces shall be Gray, Munsell No. 5B 7/1. The color of the final finish coat for the exterior and bottom flange of the fascia beams shall be Blue, Munsell No. 10B 3/6. See Special Provision for "Cleaning and Painting New Metal Structures".

Layout of slope protection system may be varied in the field to suit ground conditions as directed by the Engineer.

In lieu of the hammer selection criteria and use of the FHWA Modified Gates formula specified in Section 512 of the Standard Specifications, the Contractor shall conduct a wave equation analysis to establish the driving criteria at all pile foundations which specify a nominal required bearing above 600 kips. The analysis and calculations shall be submitted to the Engineer for approval.

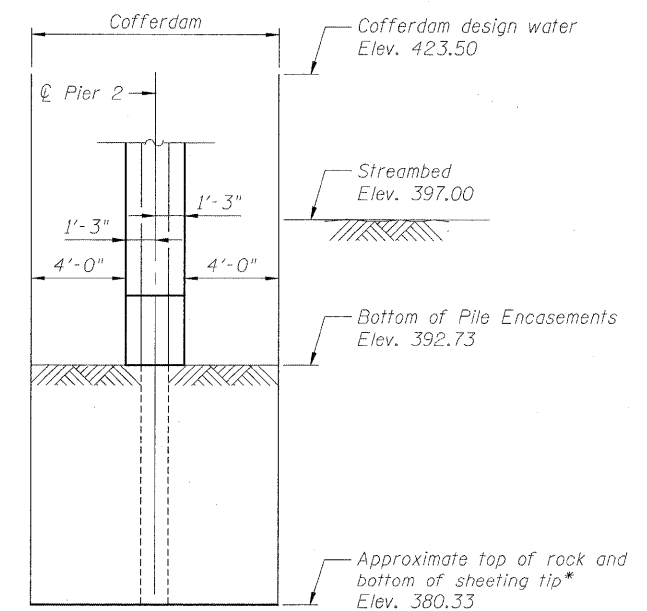
Slipforming of the parapets is not allowed.

TOTAL BILL OF MATERIAL

ITEM	UNIT	SUPER	SUB	TOTAL
Stone Riprap, Class A5	Sq. Yd.		2,496	2,496
Filter Fabric	Sq. Yd.		2,496	2,496
Removal of Existing Structures	Each			1
Structure Excavation	Cu. Yd.		565	565
Cofferdam Excavation	Cu. Yd.		76	76
Cofferdam (Location - 1)	Each		1	1
Concrete Structures	Cu. Yd.		303.9	303.9
Concrete Superstructure	Cu. Yd.	344.0		344.0
Bridge Deck Grooving	Sq. Yd.	820		820
Concrete Encasement	Cu. Yd.		29.7	29.7
Protective Coat	Sq. Yd.	1,007	24	1,031
Furnishing and Erecting Structural Steel	L. Sum	1		1
Stud Shear Connectors	Each	3,222		3,222
Reinforcement Bars, Epoxy Coated	Pound	87,750	21,550	109,300
Bar Splicers	Each	101		101
Furnishing Steel Piles HP14x117	Foot		2,143	2,143
Driving Piles	Foot		2,143	2,143
Test Pile Steel HP14x117	Each		5	5
Pile Shoes	Each		54	54
Name Plates	Each	1		1
Anchor Bolts, 3/4"	Each		24	24
Anchor Bolts, 1"	Each		24	24
Geocomposite Wall Drain	Sq. Yd.		79	79
Pipe Underdrains for Structures 4"	Foot		155	155
Porous Granular Embankment, Special	Cu. Yd.		175	175
Underwater Structure Excavation Protection - Location 1	Each		1	1
Underwater Structure Excavation Protection - Location 2	Each		1	1
Mechanical Splicers	Each		72	72

INDEX OF SHEETS

- 1 General Plan and Elevation
- 2 General Structure Data
- 3 Foundation Layout
- 4-7 Top of Slab Elevations
- 8 Top of South Approach Slab Elevations
- 9 Top of Slab Span Slab Elevations
- 10 Top of North Approach Slab Elevations
- 11 Superstructure
- 12 Superstructure Details
- 13 Diaphragm Details
- 14-15 Bridge Approach Slab - South
- 16-17 Slab Span Details
- 18-19 Bridge Approach Slab - North
- 20 Framing Plan and Design Data
- 21 Beam Details
- 22 Bearing Details
- 23 South Abutment Details
- 24 North Abutment Details
- 25 Pier Details
- 26 Miscellaneous Pier Details
- 27 Slab Span Support Details
- 28 HP Pile Details
- 29 Bar Splicer Assembly and Mechanical Splicer Details
- 30 Cantilever Forming Brackets for Superstructure with W27 Beams and Smaller
- 31-32 Boring Logs



SECTION THRU COFFERDAM

* Key sheeting into rock



FILE NAME =	USER NAME =	DESIGNED - RLM	REVISED -	STATE OF ILLINOIS DEPARTMENT OF TRANSPORTATION	GENERAL STRUCTURE DATA STRUCTURE NO. 039-0073	F.A.S. RTE.	SECTION	COUNTY	TOTAL SHEETS	SHEET NO.	
	PLDT SCALE =	CHECKED - MJP	REVISED -			1908	(138)I-2	JACKSON	71	41	
	PLDT DATE = 01/14/2011	DRAWN - PRC	REVISED -			CONTRACT NO. 98898					
		CHECKED - RLM	REVISED -			ILLINOIS FED. AID PROJECT					