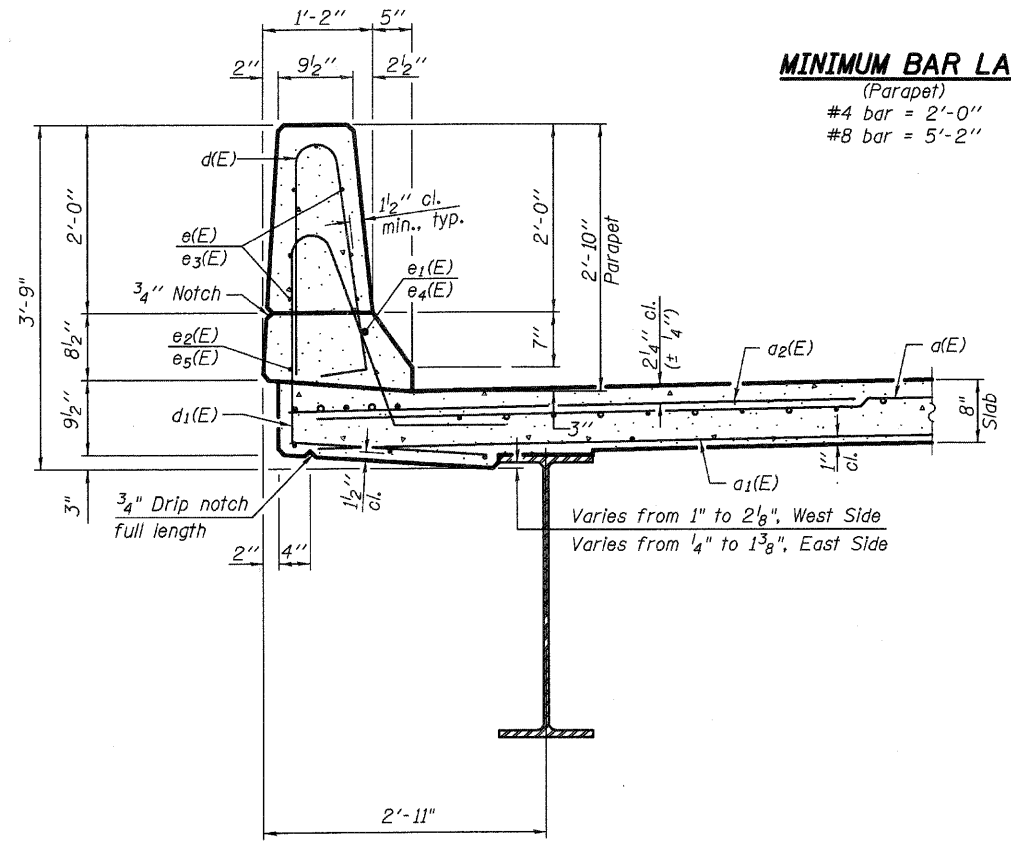
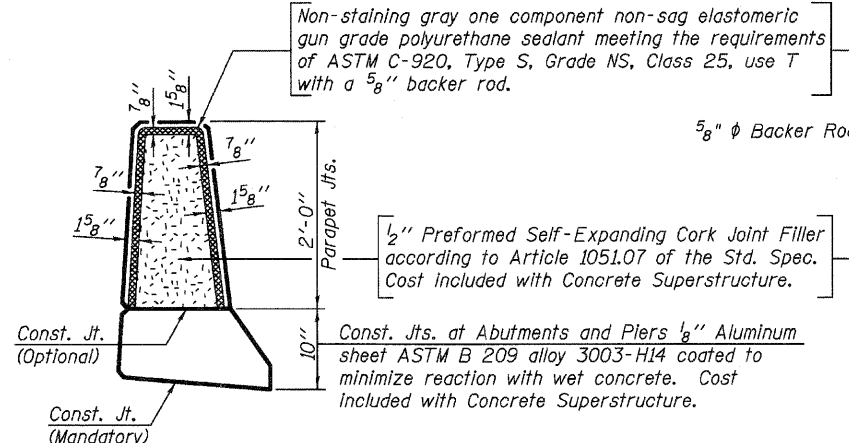


**INSIDE ELEVATION OF PARAPET**

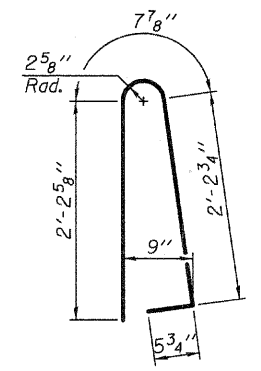


**SECTION THRU PARAPET**

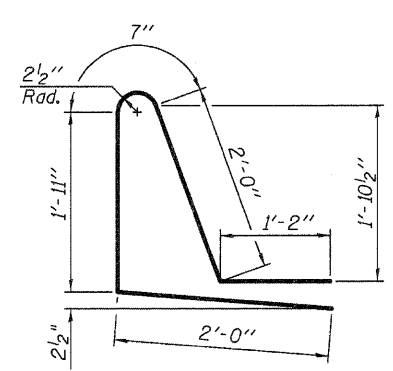
**MINIMUM BAR LAP**  
(Parapet)  
#4 bar = 2'-0"  
#8 bar = 5'-2"



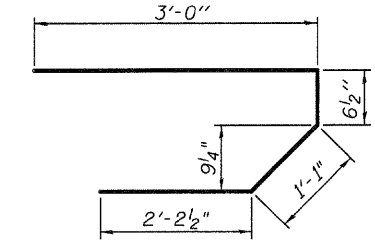
**PARAPET JOINT DETAILS**



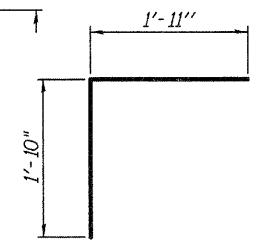
**BAR d(E)**



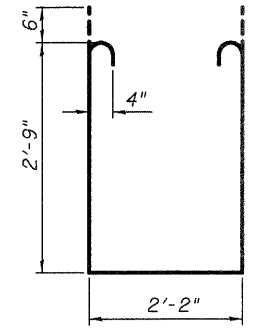
**BAR d1(E)**



**BAR s(E)**



**BAR v(E)**



**BAR s1(E)**

**SUPERSTRUCTURE BILL OF MATERIAL**

Bar	No.	Size	Length	Shape
a(E)	250	#5	39'-4"	—
a1(E)	152	#5	38'-10"	—
a2(E)	500	#6	6'-6"	—
a3(E)	4	#5	42'-5"	—
b(E)	172	#5	33'-3"	—
b1(E)	80	#6	30'-0"	—
b2(E)	180	#5	27'-1"	—
d(E)	276	#5	5'-7"	⌒
d1(E)	276	#5	7'-8"	⌒
e(E)	56	#4	18'-6"	—
e1(E)	4	#8	37'-4"	—
e2(E)	4	#4	37'-4"	—
e3(E)	42	#4	16'-4"	—
e4(E)	2	#8	49'-8"	—
e5(E)	4	#4	25'-10"	—
m(E)	10	#6	42'-10"	—
m1(E)	24	#6	9'-11"	—
m2(E)	10	#6	7'-0"	—
m3(E)	4	#6	2'-9"	—
s(E)	82	#5	6'-10"	⌒
s1(E)	72	#4	8'-8"	⌒
v(E)	80	#5	3'-9"	⌒
Reinforcement Bars, Epoxy Coated			Pound	44,360
Concrete Superstructure			Cu. Yd.	180.0
Bridge Deck Grooving			Sq. Yd.	486
Protective Coat			Sq. Yd.	618

Bars indicated thus 1 x 2-#4 etc. indicates 1 line of bars with 2 lengths per line.

