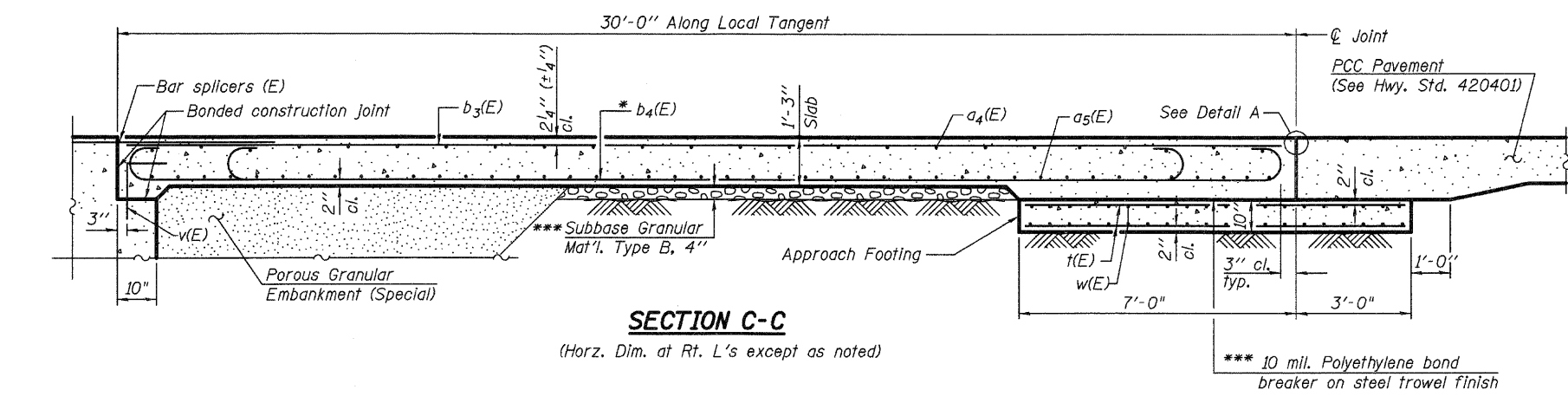
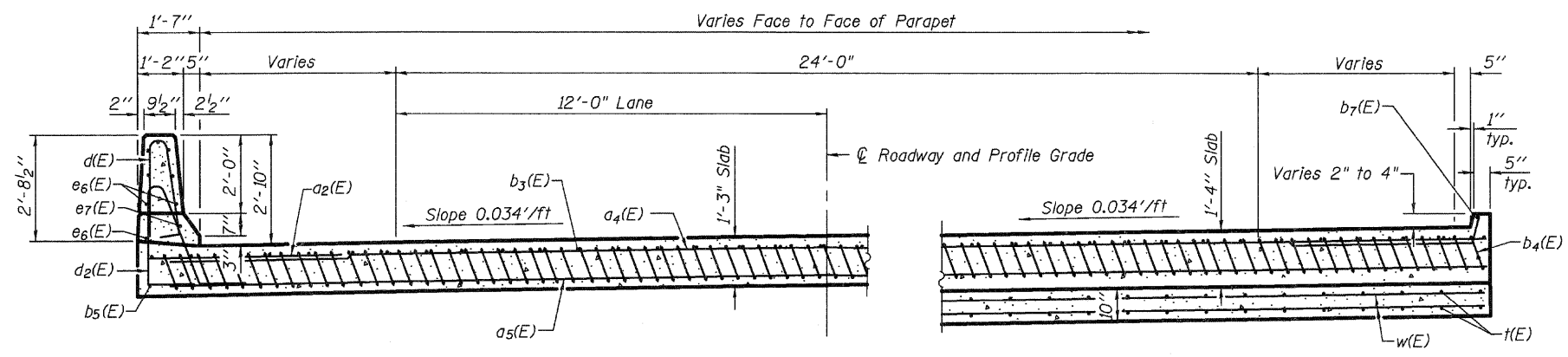


Notes:  
 See sheet 14 of 32 for Detail A.  
 Approach slab and parapet concrete shall be paid for as Concrete Superstructure.  
 Approach footing concrete shall be paid for as Concrete Structures.  
 Reinforcement shall be paid for as Reinforcement Bars, Epoxy Coated.  
 For v(E) bar details, see sheets 11, 12 and 13 of 32.  
 The approach footing maximum applied service bearing pressure (Qmax) = 2.0 ksf.  
 For bar splicer details, see sheet 29 of 32.  
 Cost of excavation for approach footing included with Concrete Structures.  
 For Porous Granular Embankment (Special) and drainage treatment details, see sheet 3 of 32.  
 For additional parapet details, see sheet 12 of 32.



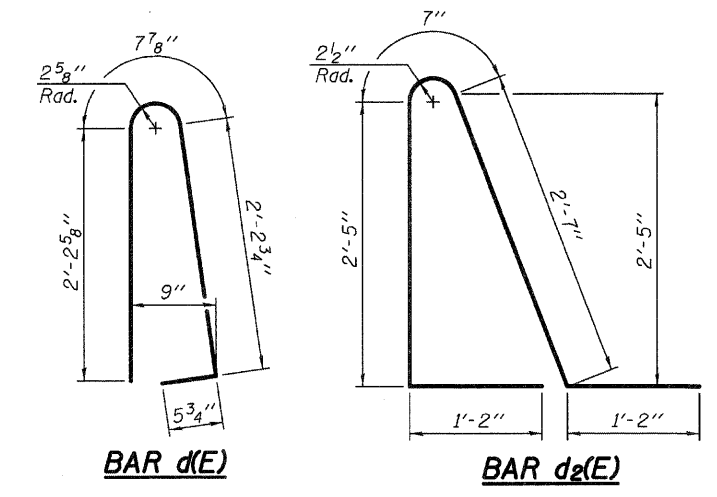
**SECTION C-C**

(Horz. Dim. at Rt. L's except as noted)



**SECTION D-D**

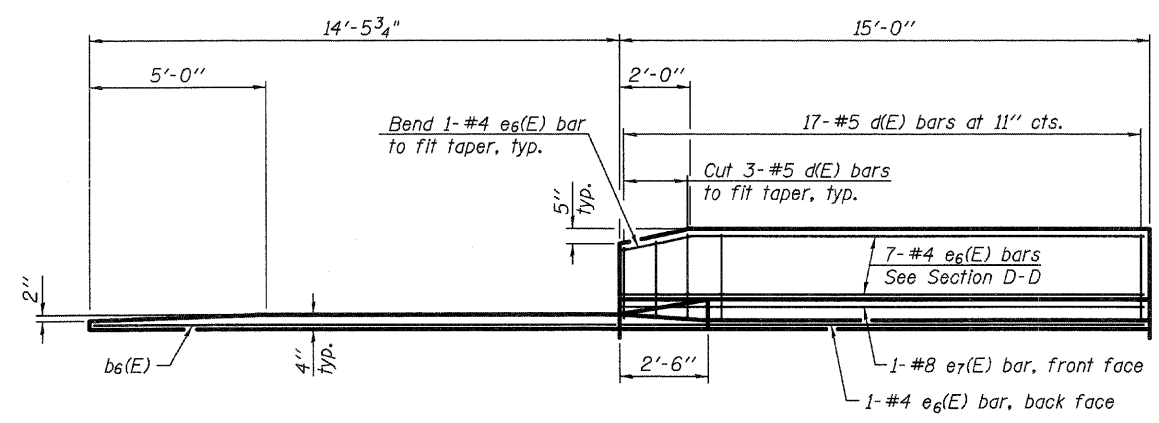
(See Plan for dimensions not shown)



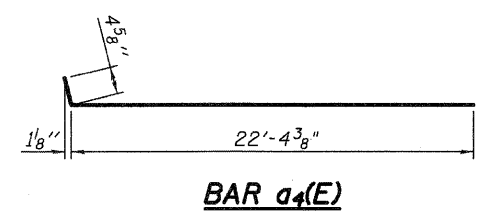
\* Tilt #9 b4(E) bars as required to maintain clearance.  
 \*\*\* Cost included with Concrete Superstructure.

**SOUTH APPROACH  
 BILL OF MATERIAL**

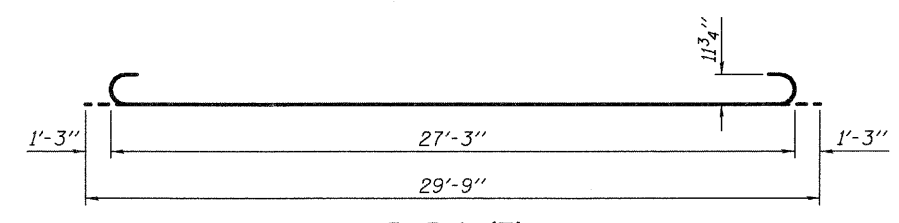
Bar	No.	Size	Length	Shape
a2(E)	24	#6	6'-6"	—
a4(E)	50	#4	22'-9"	—
a5(E)	92	#5	22'-8"	—
b3(E)	32	#4	29'-8"	—
b4(E)	94	#9	29'-9"	—
b5(E)	4	#4	14'-8"	—
b6(E)	1	#4	14'-1"	—
b7(E)	1	#4	14'-6"	—
d(E)	34	#5	5'-7"	Λ
d2(E)	34	#5	7'-11"	Λ
e6(E)	16	#4	14'-8"	—
e7(E)	2	#8	14'-8"	—
t(E)	78	#4	10'-5"	—
w(E)	80	#5	22'-0"	—
Concrete Superstructure			Cu. Yd.	58.6
Concrete Structures			Cu. Yd.	12.6
Bridge Deck Grooving			Sq. Yd.	116
Protective Coat			Sq. Yd.	138
Reinforcement Bars, Epoxy Coated			Pound	16,470



**VIEW E-E**



**BAR a4(E)**



**BAR b4(E)**

