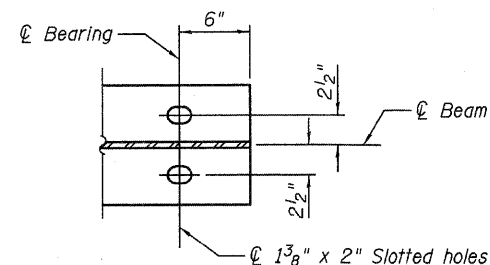


BEAM ELEVATION
(6 Required)

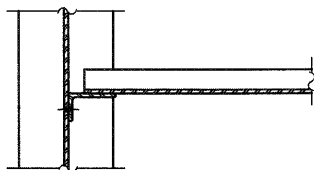


SECTION B-B
(N. Abut. end shown
S. Abut. end similar)

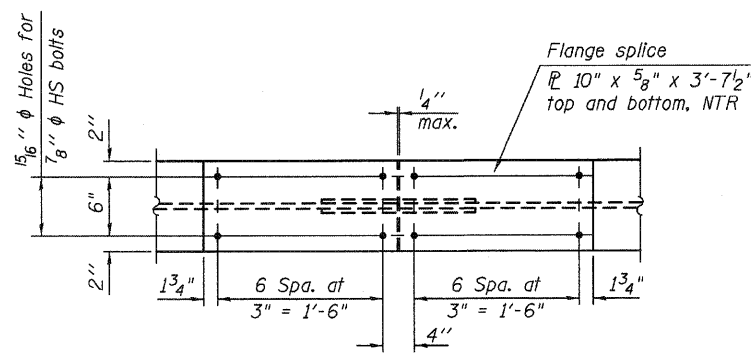
***TOP OF BEAM ELEVATIONS**

Location	Bm. #1	Bm. #2	Bm. #3	Bm. #4	Bm. #5	Bm. #6
℄ Brg. at South Abut.	427.22	427.44	427.67	427.89	428.11	428.34
℄ Brg. at Pier 1	427.22	427.44	427.67	427.90	428.13	428.36
℄ Splice	427.22	427.45	427.68	427.91	428.14	428.37
℄ Brg. at Pier 2	427.21	427.45	427.68	427.92	428.15	428.39
℄ Brg. at North Abut.	427.21	427.45	427.69	427.93	428.17	428.41

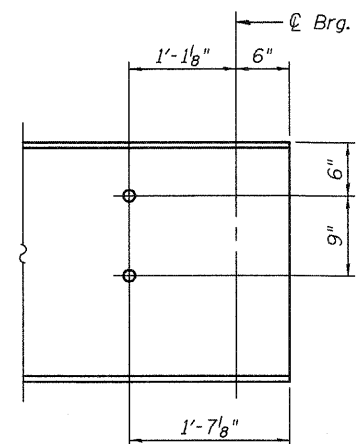
* For fabrication only



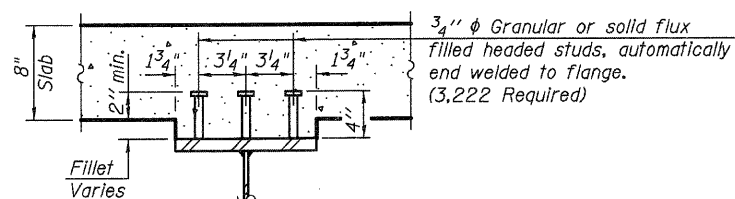
SECTION C-C



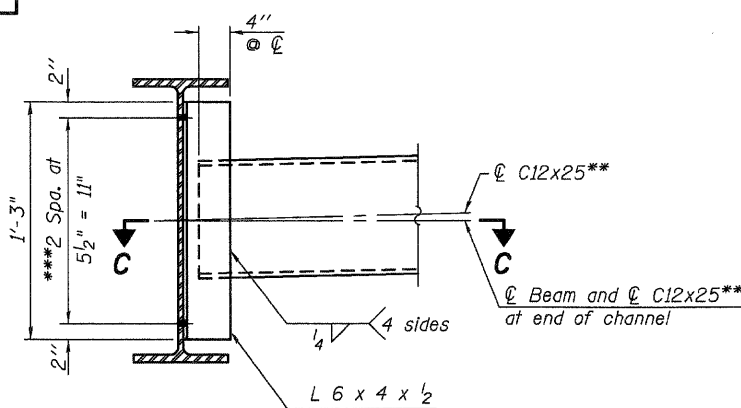
PLAN



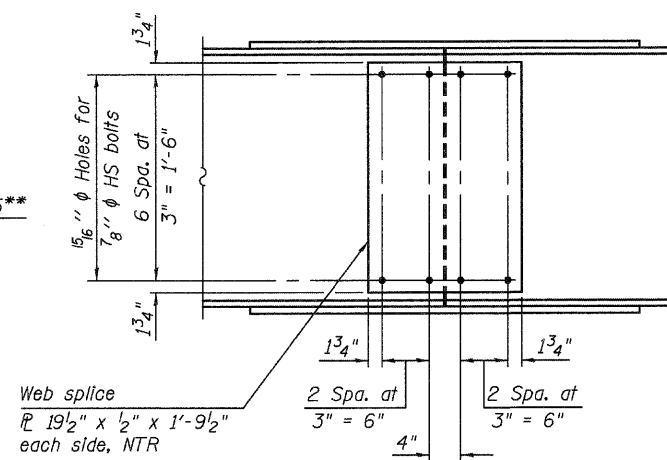
END OF GIRDER ELEVATION
(N. Abut. end shown
S. Abut. end similar)



SECTION A-A



INTERIOR DIAPHRAGM
(25 Required)



ELEVATION

SPLICE DETAIL
(6 Required)

Notes:
Beams and splice plates shall be AASHTO M270 Grade 50.
Diaphragms and diaphragm connection angles shall be AASHTO M270 Grade 36.
Load carrying components designated "NTR" shall conform to the Supplemental Requirements for Notch Toughness, Zone 2.

Notes:
Two hardened washers required for each set of oversized holes.
See the Framing Plan on sheet 20 of 32 for locations of interior diaphragms.
**C12x30 can be used as an alternate channel size to facilitate material acquisition. Calculated weight of structural steel is based on the lighter section.
The alternate, if utilized, shall be provided at no additional cost to the Department.
***3/4 inch diameter HS bolts, 1 5/8 inch diameter holes



FILE NAME =	USER NAME =	DESIGNED - RLM	REVISED -	STATE OF ILLINOIS DEPARTMENT OF TRANSPORTATION	BEAM DETAILS STRUCTURE NO. 039-0073	F.A.S. RTE.	SECTION	COUNTY	TOTAL SHEETS	SHEET NO.	
	PLOT SCALE =	CHECKED - MJP	REVISED -			1908	(13B)1-2	JACKSON	71	60	
	PLOT DATE = 12/02/2010	DRAWN - PRC	REVISED -			CONTRACT NO. 98898					
		CHECKED - MJP	REVISED -			ILLINOIS FED. AID PROJECT					