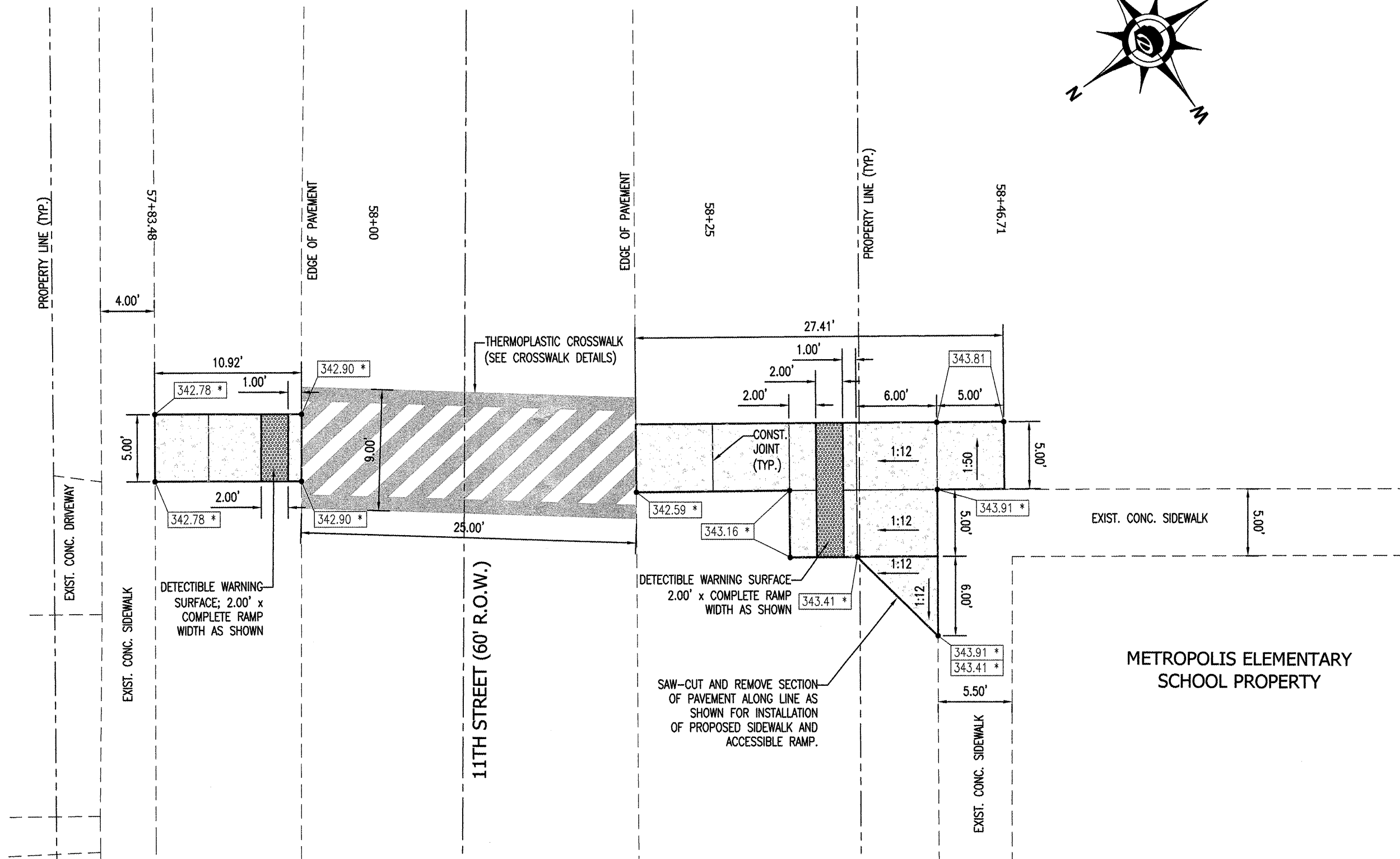
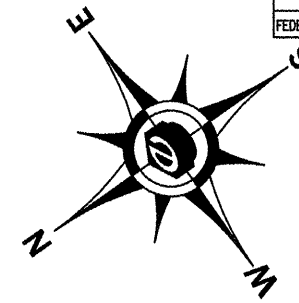


ROUTE	SECTION	COUNTY	TOTAL SHEETS	SHEET NO.
SRTS	10-00045-00-SW	MASSAC	12	9
PLAN AND PROFILE - METROPOLIS ELEMENTARY SIDEWALK				
FEDERAL PROJECT NO. SRTS-4009(024)			CONTRACT NO. 99446	



STA. 57+83.48 TO 58+46.71

DETAIL @ 11th STREET AND METROPOLIS ELEMENTARY PROPERTY

SCALE: 1/8" = 1'

SPOT ELEVATION NOTES:

1. SPOT ELEVATIONS DENOTED WITH AN ASTERISK (*) MUST MATCH THE EXISTING ELEVATIONS OF THE ADJACENT PAVEMENT/CURB. IF PROPOSED ELEVATIONS VARY FROM THE EXISTING ELEVATIONS, ADJUST THE PROPOSED ELEVATIONS TO MATCH. CONTRACTOR MUST NOTIFY ENGINEER OF ANY DISCREPANCIES PRIOR TO CONSTRUCTION OF ANY PROPOSED ITEMS.
2. SINGLE SPOT ELEVATIONS DENOTE ELEVATION ON PAVEMENT SURFACE AND FLUSH ADJOINING SURFACE. DOUBLE SPOT ELEVATIONS DENOTE ELEVATION ON PAVEMENT SURFACE AND ADJACENT SIDEWALK OR CURB VERTICAL RISE/DROP.