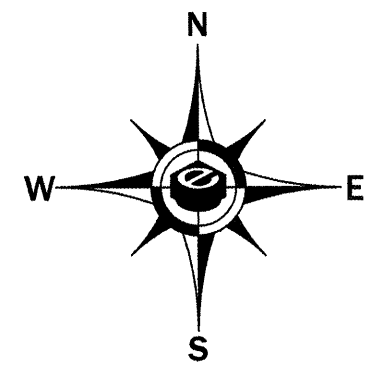


ROUTE	SECTION	COUNTY	TOTAL SHEETS	SHEET NO.
SRTS	10-00045-00-SW	MASSAC	12	10
PLAN AND PROFILE - BROOKPORT ELEMENTARY SIDEWALK				
FEDERAL PROJECT NO. SRTS-4009(024)			CONTRACT NO. 99446	



BROOKPORT
ELEMENTARY SCHOOL

STA. 9+71.70 TO STA. 10+00.00
CROSSWALK - SEE TYPICAL
CROSSWALK DETAIL

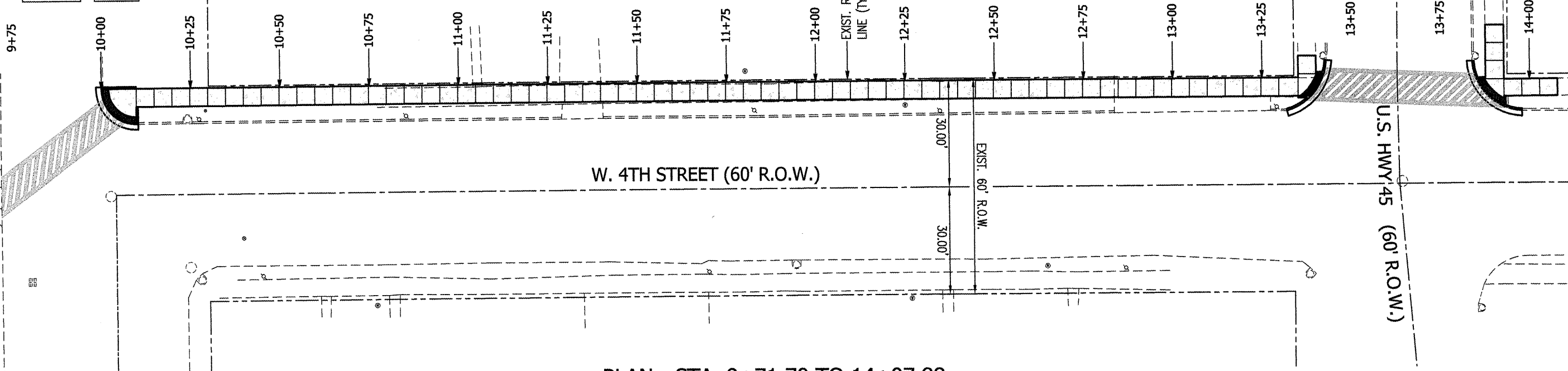
STA. 10+00.00 TO STA. 10+09.75
TYPE A RAMP - SEE RAMP DETAIL

STA. 10+09.75 TO STA. 13+35.15
PORTLAND CEMENT CONCRETE
SIDEWALK 4-INCH; 5.00 FEET WIDE;
SEE TYPICAL SIDEWALK DETAILS;
BACK EDGE OF SIDEWALK OFFSET
29.50' LEFT

STA. 13+35.15 TO STA. 13+42.37
TYPE A RAMP - SEE RAMP DETAIL

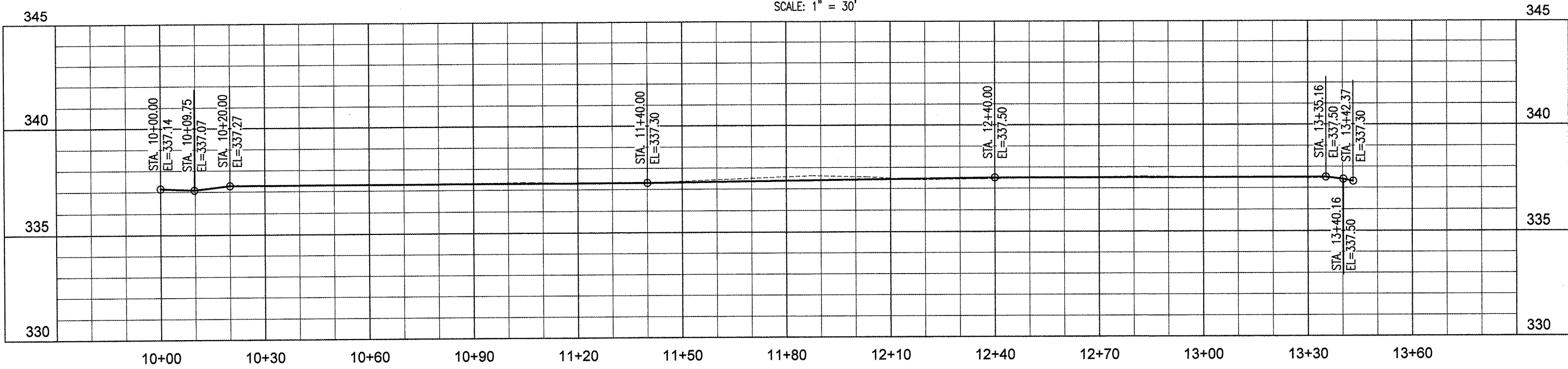
STA. 13+42.37 TO STA. 13+85.23
CROSSWALK - SEE TYPICAL
CROSSWALK DETAIL

STA. 13+85.23 TO STA. 14+07.88
TYPE A RAMP - SEE RAMP DETAIL



PLAN - STA. 9+71.70 TO 14+07.88

SCALE: 1" = 30'



PROFILE - STA. 10+00.00 TO 13+42.37

SCALE: 1" = 30' (HORIZ.); 1" = 5' (VERT.)