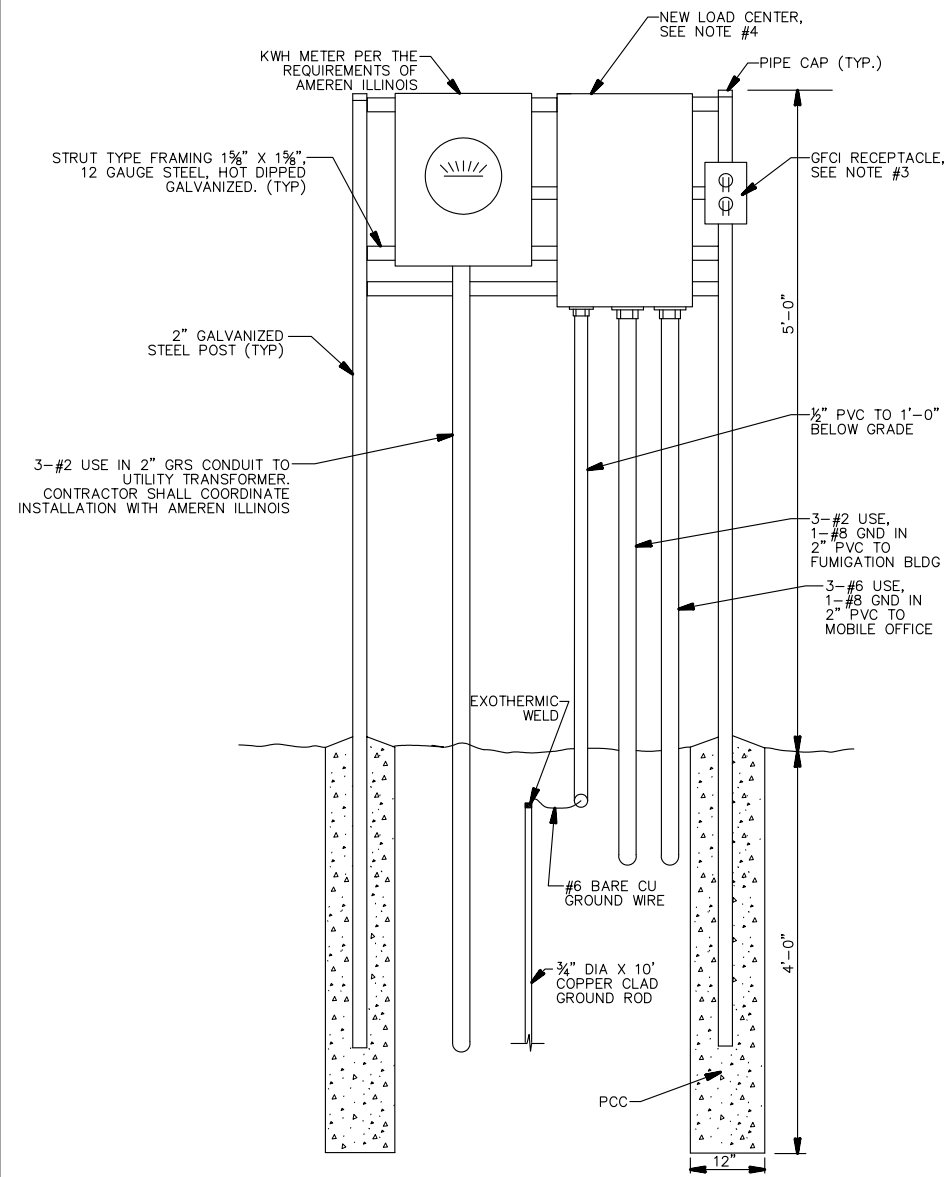


△ ADDED THROUGH ADDENDUM NO. 1.

REVISIONS		
NUMBER	BY	DATE
△	BWG	3/3/11

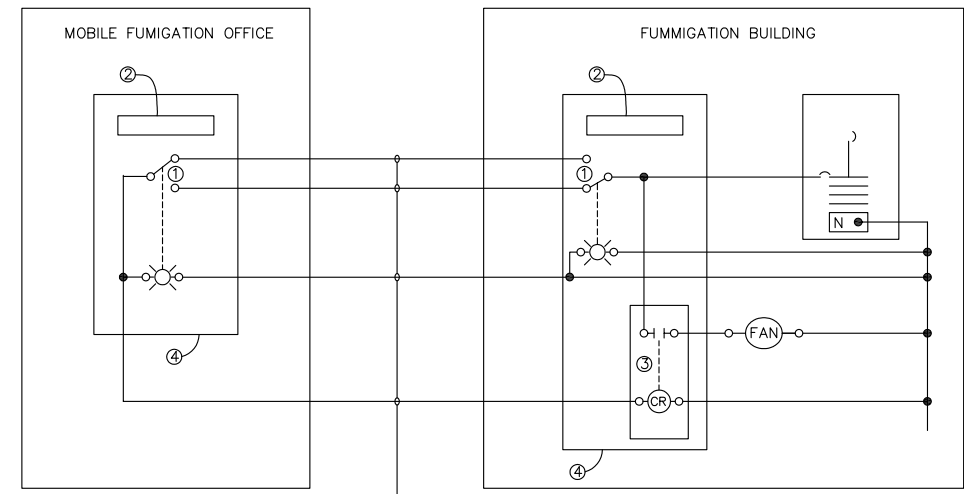
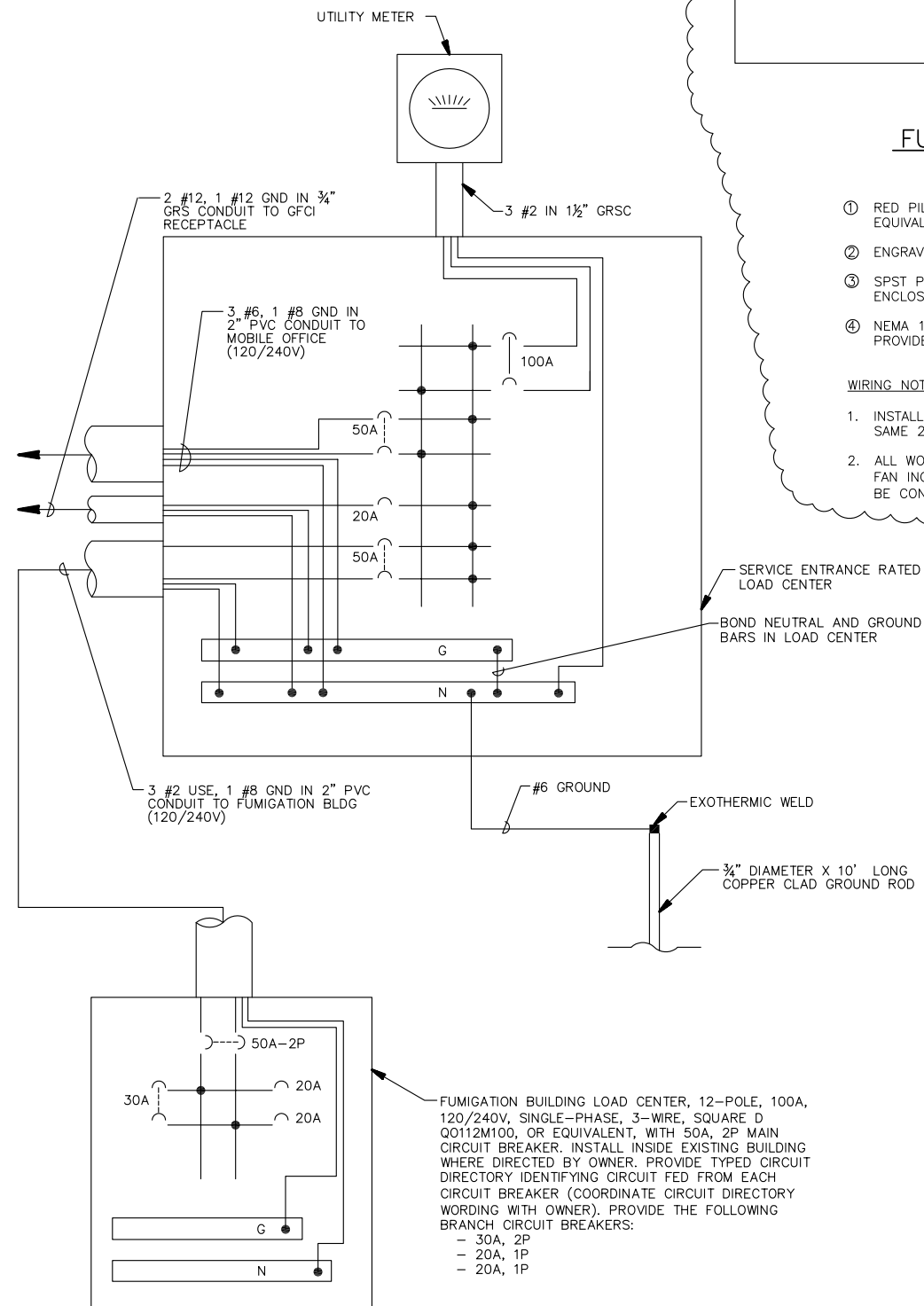
0 1 2
THIS BAR IS EQUAL TO 2"
AT FULL SCALE (34X22).
PLOT 1



KWH METER AND LOAD CENTER DETAIL
N.T.S.

NOTES:

- CONTRACTOR SHALL PROVIDE ELECTRICAL CONDUITS IN ACCORDANCE WITH ITEM 110.
- CONCRETE SHALL MEET REQUIREMENTS OF ITEM 610.
- CONTRACTOR SHALL FURNISH AND INSTALL A SPECIFICATION GRADE WEATHER-RESISTANT AND CORROSION-RESISTANT GFCI NEMA 5-20R RECEPTACLE, PASS & SEYMOUR CAT. # 2095DSWRBK, MOUNTED IN FS DEVICE BOX, WITH AN EXTRA-DEEP, SUNLIGHT RESISTANT, PADLOCKABLE, POLYCARBONATE CONSTRUCTION WEATHERPROOF COVER WHICH COMPLIES WITH NEC ARTICLE 406.9B1 (UNITS SHALL REMAIN RAIN-TIGHT WHETHER OR NOT A PLUG AND CORD IS INSERTED) TAYMAC MM740C-B, OR EQUIVALENT.
- CONTRACTOR SHALL FURNISH AND INSTALL A UL LISTED SERVICE ENTRANCE RATED LOAD CENTER, 100A, 120/240V, SINGLE-PHASE, 3-WIRE, IN NEMA 3R ENCLOSURE, WITH 100A-2P MAIN CIRCUIT BREAKER, SQUARE D TYPE NQ, OR EQUIVALENT. SEE DETAIL THIS SHEET FOR BRANCH CIRCUIT BREAKERS.
- KWH METER BASE, LOAD CENTER AND OTHER ELECTRICAL EQUIPMENT SHALL MEET THE "BUY AMERICAN" REQUIREMENT.



FUMIGATION BUILDING FAN WIRING

EQUIPMENT NOMENCLATURE

- RED PILOT LIGHTED THREE-WAY TOGGLE SWITCH, 20A, 120V, PASS & SEYMOUR PS20AC2RPL, OR EQUIVALENT, WITH WALLPLATE. SWITCH IS ILLUMINATED WHEN FAN IS "ON".
- ENGRAVED NAMEPLATE READING "FUMIGATION BLDG FAN".
- SPST POWER CONTROL RELAY, SQUARE D CO6V20, OR EQUIVALENT. INSTALL IN NEMA 1 ENCLOSURE WITH TOGGLE SWITCH.
- NEMA 1 ENCLOSURE, SIZED AS REQUIRED TO HOUSE EQUIPMENT. AT FUMIGATION BUILDING, PROVIDE SUBPANEL FOR MOUNTING POWER CONTROL RELAY.

WIRING NOTE

- INSTALL FOUR #12 USE IN SAME 2" PVC AS MOBILE FUMIGATION OFFICE POWER WIRING AND SAME 2" PVC CONDUIT AS FUMIGATION BLDG POWER WIRING. SEE PLAN SHEET 33 FOR ROUTING.
- ALL WORK ASSOCIATED WITH THE FUMIGATION BUILDING FAN WIRING FROM THE SUBPANEL TO THE FAN INCLUDING THE #12 WIRE, TOGGLE SWITCH, CONTROL RELAY AND NEMA 1 ENCLOSURE SHALL BE CONSIDERED INCIDENTAL TO THE REINSTALL FUMIGATION FACILITY (AR801975) PAY ITEM.

ONE MEMORIAL DRIVE, SUITE 500
ST. LOUIS, MO 63102
(314) 436-5500

CMT
CRAWFORD, MURPHY & TILLY, INC.
CONSULTING ENGINEERS

© Copyright CMT, Inc.
PROFESSIONAL ENGINEERING - 184--00613

IL PROJECT: BLV-4061
AIP PROJ: 3-17-0146-XX

FILE: 29-32_ELECTRICAL_DETAILS.dwg

DESIGN BY: LEW
DRAWN BY: ASA
CHECKED BY: MJD/CET
APPROVED BY: BWG
DATE: JANUARY 14, 2011
JOB No: 10098-01

**ELECTRICAL
DETAILS 4**