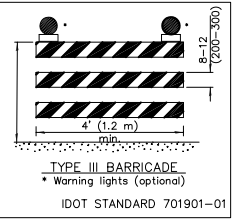
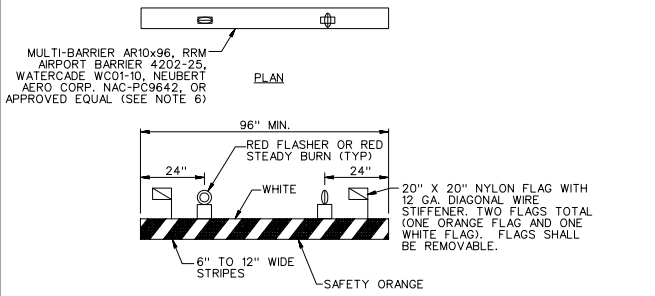


MAXIMUM HEIGHT OF EQUIPMENT = 25'



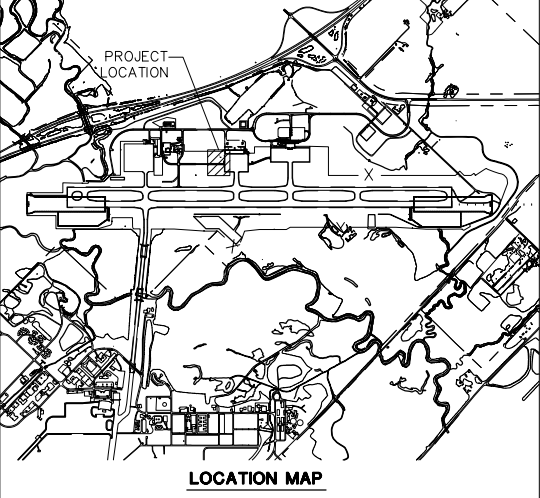
CRITICAL POINTS

POINT	LATITUDE	LONGITUDE	GROUND ELEVATION	STRUCTURE HEIGHT
1	38°33'00.84"	89°49'19.92"	443.39	0'
2	38°32'58.68"	89°49'17.33"	443.39	0'
3	38°33'03.76"	89°49'15.99"	444.50	0'
4	38°33'01.60"	89°49'13.40"	444.50	0'
5	38°32'55.23"	89°49'09.10"	443.75	8'
6	38°32'55.07"	89°49'08.91"	443.75	8'
7	38°32'55.23"	89°49'08.70"	443.75	8'
8	38°32'55.39"	89°49'08.89"	443.75	8'
9	38°32'55.15"	89°49'09.00"	443.75	14'
10	38°32'57.12"	89°49'08.24"	444.29	10'
11	38°32'57.06"	89°49'08.17"	444.29	10'
12	38°32'56.99"	89°49'07.25"	444.82	10'
13	38°32'56.71"	89°49'06.90"	444.82	10'



- BARRICADE NOTES:**
- FLASHER OR STEADY BURN LIGHTS SHALL BE BATTERY OR SOLAR POWER OPERATED. LENS SHALL BE RED AND BE ABLE TO ROTATE 90°.
 - FACING OF BARRICADE SHALL BE COVERED WITH REFLECTIVE TAPE OR PAINT.
 - BARRICADES TO BE PLACED WITH A MAXIMUM OF 20' SPACING CENTER TO CENTER ALONG OPERATIONAL PAVEMENT ADJACENT TO CONSTRUCTION AS DIRECTED BY THE RESIDENT ENGINEER. ALTERNATE FLASHER OR STEADY BURN LENSES SO THAT EVERY OTHER LENS IS ROTATED 90°.
 - FLASHER OR STEADY BURN LIGHTS SHALL BE SECURED TO THE BARRICADES, AS APPROVED BY THE RESIDENT ENGINEER.
 - BARRICADES SHALL BE OF LOW MASS, EASILY COLLAPSIBLE UPON CONTACT WITH AN AIRCRAFT OR ANY OF ITS COMPONENTS, AND WEIGHTED TO AVOID BEING BLOWN OVER.
 - BARRICADES SHALL BE OF A COMMERCIAL DESIGN.
 - THE AIRPORT WILL SUPPLY UP TO FIFTY (50) LOW PROFILE BARRICADES.

LOW PROFILE LIGHTED BARRICADE
NOT TO SCALE



SEQUENCE OF CONSTRUCTION NOTES
GENERAL NOTES

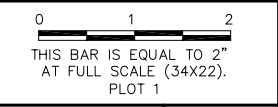
- PRIOR TO THE START OF CONSTRUCTION THE CONTRACTOR SHALL ATTEND A PRECONSTRUCTION CONFERENCE WITH THE AIRPORT, ENGINEER, AND ILLINOIS DIVISION OF AERONAUTICS (IDA). THE COST OF PREPARING FOR AND ATTENDING THE PRECONSTRUCTION CONFERENCE SHALL BE INCIDENTAL TO THE CONTRACT.
- ON OR BEFORE THE PRECONSTRUCTION CONFERENCE, THE CONTRACTOR SHALL SUBMIT A PROPOSED SCHEDULE FOR THE PROJECT. THE SCHEDULE SHALL INCLUDE A START AND COMPLETION DATE FOR EACH ITEM OF WORK. THE SCHEDULE SHALL BE UPDATED ON A WEEKLY BASIS. ALL COSTS ASSOCIATED WITH THE SCHEDULE SHALL BE INCIDENTAL TO THE CONTRACT.
- DURING CONSTRUCTION THE CONTRACTOR SHALL ATTEND A WEEKLY COORDINATION MEETING WITH THE AIRPORT STAFF AND ENGINEER. ALL COSTS ASSOCIATED WITH ATTENDING THE WEEKLY MEETING SHALL BE INCIDENTAL TO THE CONTRACT.
- THE CONTRACTOR SHALL KEEP A RECORD OF THE NAMES OF ALL EMPLOYEES ENTERING THE JOB SITE ON A DAILY BASIS. A RECORD OF EACH SUBCONTRACTOR ENTERING THE JOB SITE SHALL ALSO BE KEPT BY THE CONTRACTOR.
- THE CONTRACTOR SHALL PROVIDE A 24 HOUR EMERGENCY CONTACT PERSON AND PHONE NUMBER.
- PRIOR TO THE START OF CONSTRUCTION THE CONTRACTOR SHALL PROVIDE A LIST OF SUBCONTRACTORS AND MATERIAL SUPPLIERS.
- PRIOR TO THE START OF CONSTRUCTION THE CONTRACTOR SHALL SIGN THE SWPPP CERTIFICATION STATEMENT.
- WORK INSIDE 200' OF AN ACTIVE RUNWAY CENTERLINE SHALL BE PERFORMED IN ACCORDANCE WITH FAA AC 150/5370-2E, SECTION 3-2.
- WORK INSIDE 129' OF AN ACTIVE TAXIWAY CENTERLINE SHALL BE PERFORMED IN ACCORDANCE WITH FAA AC 150/5370-2E, SECTION 3-3. THIS SHALL INCLUDE CLEARING THE AREA OF PERSONNEL AND EQUIPMENT FOR EACH PASSING AIRCRAFT.
- BARRICADES SHALL BE PLACED AT THE LOCATIONS SHOWN ON THIS SHEET OR AS DIRECTED BY THE ENGINEER. THE AIRPORT WILL SUPPLY UP TO FIFTY (50) LOW PROFILE LIGHTED BARRICADES FOR USE DURING THE PROJECT. THE CONTRACTOR WILL BE RESPONSIBLE FOR MAINTENANCE OF THE BARRICADES INCLUDING BATTERY REPLACEMENT FOR THE LIGHTS. IF ADDITIONAL LOW PROFILE BARRICADES ARE NEEDED, THE CONTRACTOR SHALL SUPPLY THE ADDITIONAL LOW PROFILE BARRICADES AT NO ADDITIONAL COST TO THE CONTRACT. UPON COMPLETION OF THE PROJECT, THE CONTRACTOR WILL RETAIN POSSESSION OF ANY ADDITIONAL BARRICADES SUPPLIED BY THE CONTRACTOR. THE BARRICADES SUPPLIED BY THE AIRPORT SHALL REMAIN PROPERTY OF THE AIRPORT AND SHALL BE RETURNED IN LIKE CONDITION WITH AN ALLOWANCE FOR NORMAL WEAR AND TEAR AS DETERMINED BY THE ENGINEER. ANY DAMAGED BARRICADES SHALL BE REPLACED BY THE CONTRACTOR WITH NEW BARRICADES OF SIMILAR TYPE AND DESIGN AT NO ADDITIONAL COST TO THE CONTRACT.
- CONSTRUCTION OF A CARGO FACILITY LOCATED ADJACENT TO THE MIKE APRON WORK AREA WILL BE ONGOING DURING THE MIKE APRON EXPANSION WORK. THE MIKE APRON EXPANSION CONTRACTOR SHALL FAMILIARIZE HIS/HERSELF WITH THE CARGO FACILITY WORK AND SHALL COORDINATE HIS/HER CONSTRUCTION OPERATIONS WITH THE AIRPORT AND THE CARGO FACILITY CONTRACTOR. ANY DISPUTE BETWEEN CONTRACTORS IN REGARDS TO SEQUENCE OF CONSTRUCTION OR CONCURRENT WORK IN OVERLAPPING PROJECTS AREAS SHALL BE SETTLED BY THE AIRPORT.
- SCOTT AIR FORCE BASE (SAFB) IS ANTICIPATING A PROJECT TO REHABILITATE RUNWAY 14R-32L DURING THE 2011 CONSTRUCTION SEASON. THIS WILL REQUIRE THE CLOSURE OF RUNWAY 14R-32L RESULTING IN INCREASED AIRCRAFT OPERATIONS ON RUNWAY 14L-32R AND TAXIWAY K. THE MIKE APRON EXPANSION CONTRACTOR SHALL FAMILIARIZE HIS/HERSELF WITH THE SAFB WORK AND SHALL COORDINATE HIS/HER CONSTRUCTION OPERATIONS WITH THE AIRPORT AND THE SAFB CONTRACTOR.
- TOTAL CONTRACT TIME SHALL BE 130 CALENDAR DAYS.

ACCESS NOTES

- THE CONTRACTOR IS TO ACCESS THE SITE USING THE GATE LOCATED AT THE PUBLIC SAFETY OFFICE (BUILDING 8849). THIS GATE IS COMMONLY REFERRED TO AS THE "ARFF GATE".
- THE STORAGE AND STAGING AREA WILL BE IN THE AREA ACROSS FROM THE DEPARTMENT OF ENGINEERING AND PLANNING (BUILDING 9768).
- ALL WORK WITHIN A CONTROLLED OR SECURE AREA SHALL BE SUBJECT TO AIRPORT SECURITY REGULATIONS. ANY VIOLATION OF AIRPORT SECURITY RULES IS GROUNDS FOR IMMEDIATE TERMINATION OF CONTRACT AND RELEVANT FINES.
- CERTAIN CONTRACTOR EMPLOYEES SHALL OBTAIN A MIDAMERICA ST. LOUIS AIRPORT ACCESS MEDIA IDENTIFICATION BADGE. THIS CONSISTS OF FILLING OUT ALL NECESSARY PAPERWORK, FINGERPRINTING, ATTENDING AND PASSING A 2-HOUR TRAINING CLASS CONCERNING SAFETY AND SECURITY AT THE AIRPORT. CONTRACTOR EMPLOYEES MUST MEET CERTAIN BACKGROUND CHECK CRITERIA AND THE CONTRACTOR MUST MAKE CERTAIN CERTIFICATION ABOUT EACH EMPLOYEE. THE CONTRACTOR SHALL BE RESPONSIBLE FOR FINGERPRINTING COSTS (CURRENTLY \$75.00 PER INDIVIDUAL). ALL COSTS ASSOCIATED WITH OBTAINING THE IDENTIFICATION BADGE SHALL BE BORNE BY THE CONTRACTOR.
- ALL CONTRACTOR EMPLOYEES WHO ARE DESIGNATED AS DRIVERS FOR THE CONTRACTOR WITHIN THE AIRFIELD OPERATIONS AREA (AOA) SHALL ALSO ATTEND AND PASS THE MIDAMERICA ST. LOUIS AIRPORT DRIVERS TRAINING PROGRAM. THE DURATION IS APPROXIMATELY TWO HOURS. ONLY THOSE INDIVIDUALS WHO RECEIVE THIS DESIGNATION WILL BE PERMITTED TO OPERATE VEHICLES OR EQUIPMENT ON MIDAMERICA ST. LOUIS AIRPORT (BLV). ALL COSTS ASSOCIATED WITH THE DRIVER TRAINING PROGRAM SHALL BE BORNE BY THE CONTRACTOR.
- DRIVERS OF TRUCKS CONTAINING MATERIAL DELIVERIES (AGGREGATE, CONCRETE, ETC.) NEED NOT OBTAIN AN AIRPORT MEDIA ID BADGE BUT SHALL BE REQUIRED TO SUBMIT THEIR NAME, DRIVER'S LICENSE NUMBER, TRUCK LICENSE PLATE NUMBER AND NAME OF TRUCKING COMPANY TO THE PRIME CONTRACTOR PRIOR TO ENTERING THE JOBSITE. WHILE INSIDE THE AOA, THE TRUCK DRIVERS SHALL BE ESCORTED BY THE CONTRACTOR.
- CONTRACTOR WORK CREWS MUST MAINTAIN RADIO CONTACT WITH THE AIR TRAFFIC CONTROL TOWER AT ALL TIMES. MIDAMERICA ST. LOUIS AIRPORT SHALL SUPPLY THE CONTRACTOR WITH APPROPRIATE RADIO(S).
- THE STORAGE AND STAGING AREA WILL BE ACROSS FROM THE ENGINEERING AND PLANNING BUILDING. THIS AREA IS ENCLOSED BY A FENCE AND IS OUTSIDE THE AOA FENCE. AN ALTERNATE LOCATION WILL BE SOUTHEAST (SOUTH) OF THE FUEL FARM ON THE NORTHEAST (EAST) SIDE OF THE PUBLIC ACCESS ROAD. THIS AREA IS OUTSIDE OF THE AOA FENCE AND HAS NO FENCING AROUND IT.
- ACCESS TO THE EARTHWORK DISPOSAL AREA SHALL BE AS SHOWN ON THE SITE PLAN.

REVISIONS

NUMBER	BY	DATE
△	BWG	3/4/11



MIDAMERICA ST. LOUIS AIRPORT
ST. CLAIR COUNTY, ILLINOIS

MIKE APRON EXPANSION - CONTRACT 1

ONE MEMORIAL DRIVE, SUITE 500
ST. LOUIS, MO 63102
(314) 436-5500

CMT
CRAWFORD, MURPHY & TILLY, INC.
CONSULTING ENGINEERS

© Copyright CMT, Inc.
PROFESSIONAL ENGINEERING - 184-00613

IL PROJECT: BLV-4061
AIP PROJ. 3-17-0146-XX

FILE: 04_CAP.dwg

DESIGN BY: LEW

DRAWN BY: ASA

CHECKED BY: MJD/CET

APPROVED BY: BWG

DATE: JANUARY 14, 2011

JOB No: 10098-01

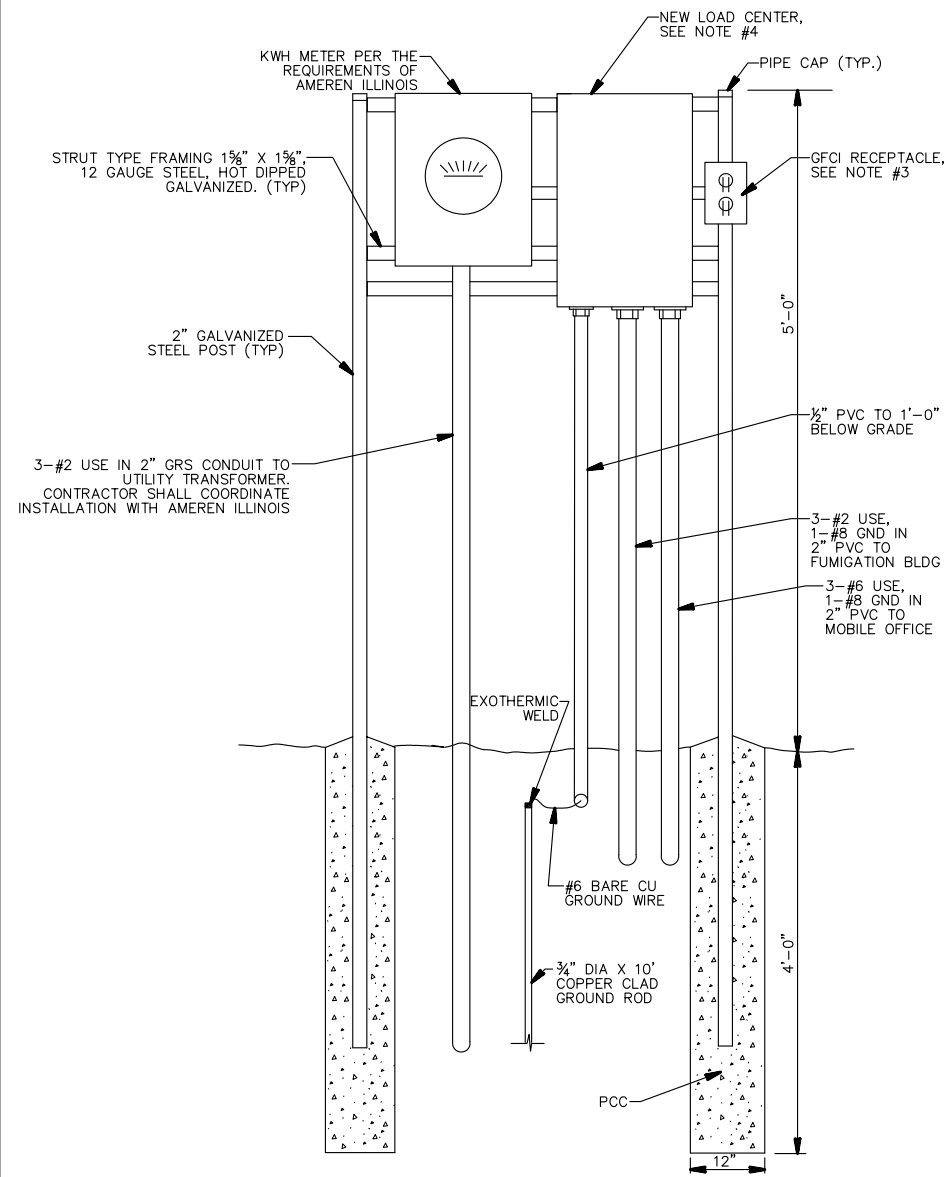
CONSTRUCTION
ACTIVITY PLAN

SHEET 4 OF 53 SHEETS

△ ADDED THROUGH ADDENDUM NO. 1.

REVISIONS		
NUMBER	BY	DATE
△	BWG	3/3/11

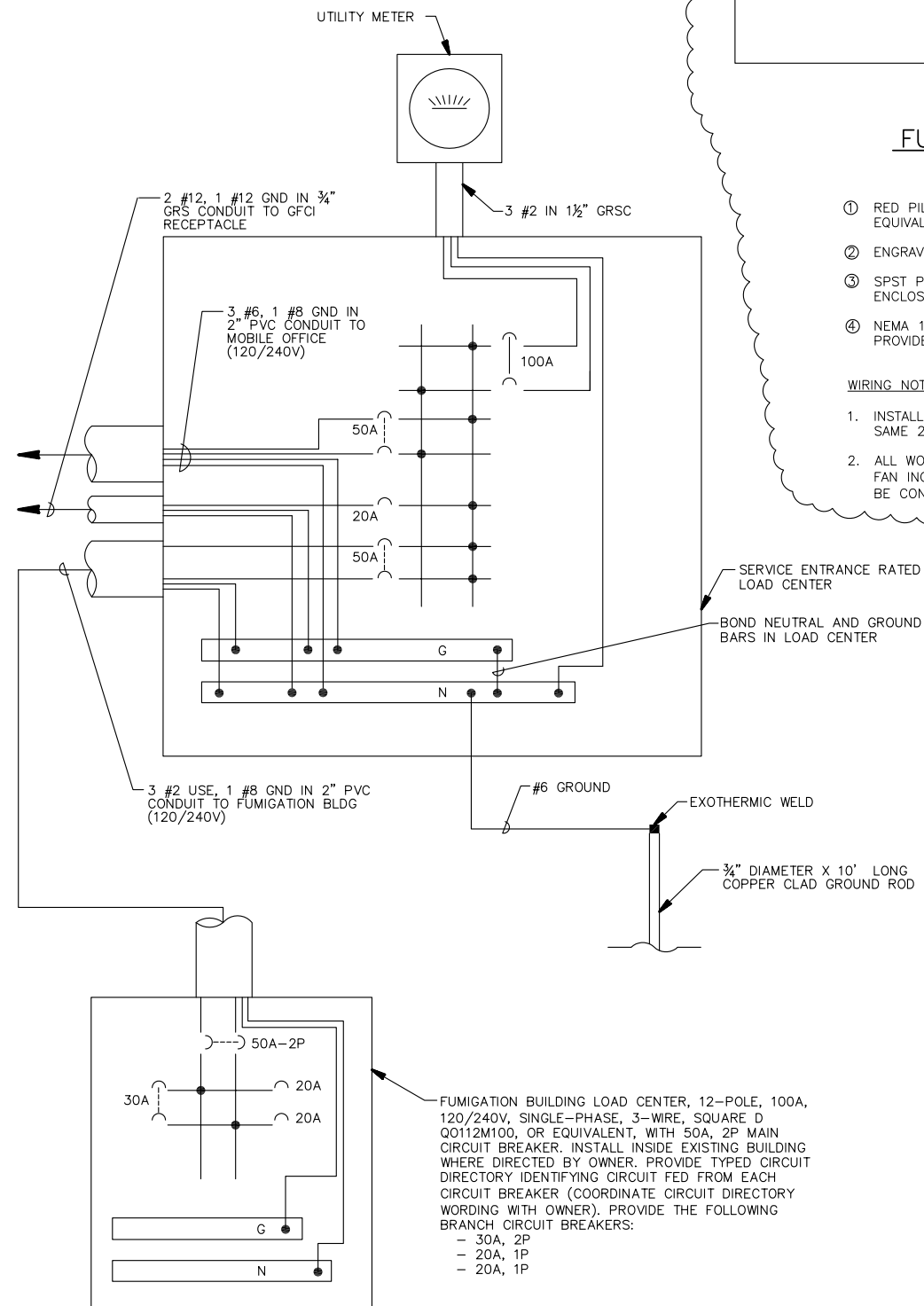
0 1 2
THIS BAR IS EQUAL TO 2"
AT FULL SCALE (34X22).
PLOT 1



KWH METER AND LOAD CENTER DETAIL
N.T.S.

NOTES:

- CONTRACTOR SHALL PROVIDE ELECTRICAL CONDUITS IN ACCORDANCE WITH ITEM 110.
- CONCRETE SHALL MEET REQUIREMENTS OF ITEM 610.
- CONTRACTOR SHALL FURNISH AND INSTALL A SPECIFICATION GRADE WEATHER-RESISTANT AND CORROSION-RESISTANT GFCI NEMA 5-20R RECEPTACLE, PASS & SEYMOUR CAT. # 2095DSWRBK, MOUNTED IN FS DEVICE BOX, WITH AN EXTRA-DEEP, SUNLIGHT RESISTANT, PADLOCKABLE, POLYCARBONATE CONSTRUCTION WEATHERPROOF COVER WHICH COMPLIES WITH NEC ARTICLE 406.9B1 (UNITS SHALL REMAIN RAIN TIGHT WHETHER OR NOT A PLUG AND CORD IS INSERTED) TAYMAC MM740C-B, OR EQUIVALENT.
- CONTRACTOR SHALL FURNISH AND INSTALL A UL LISTED SERVICE ENTRANCE RATED LOAD CENTER, 100A, 120/240V, SINGLE-PHASE, 3-WIRE, IN NEMA 3R ENCLOSURE, WITH 100A-2P MAIN CIRCUIT BREAKER, SQUARE D TYPE NQ, OR EQUIVALENT. SEE DETAIL THIS SHEET FOR BRANCH CIRCUIT BREAKERS.
- KWH METER BASE, LOAD CENTER AND OTHER ELECTRICAL EQUIPMENT SHALL MEET THE "BUY AMERICAN" REQUIREMENT.



FUMIGATION BUILDING FAN WIRING

EQUIPMENT NOMENCLATURE

- RED PILOT LIGHTED THREE-WAY TOGGLE SWITCH, 20A, 120V, PASS & SEYMOUR PS20AC2RPL, OR EQUIVALENT, WITH WALLPLATE. SWITCH IS ILLUMINATED WHEN FAN IS "ON".
- ENGRAVED NAMEPLATE READING "FUMIGATION BLDG FAN".
- SPST POWER CONTROL RELAY, SQUARE D CO6V20, OR EQUIVALENT. INSTALL IN NEMA 1 ENCLOSURE WITH TOGGLE SWITCH.
- NEMA 1 ENCLOSURE, SIZED AS REQUIRED TO HOUSE EQUIPMENT. AT FUMIGATION BUILDING, PROVIDE SUBPANEL FOR MOUNTING POWER CONTROL RELAY.

WIRING NOTE

- INSTALL FOUR #12 USE IN SAME 2" PVC AS MOBILE FUMIGATION OFFICE POWER WIRING AND SAME 2" PVC CONDUIT AS FUMIGATION BLDG POWER WIRING. SEE PLAN SHEET 33 FOR ROUTING.
- ALL WORK ASSOCIATED WITH THE FUMIGATION BUILDING FAN WIRING FROM THE SUBPANEL TO THE FAN INCLUDING THE #12 WIRE, TOGGLE SWITCH, CONTROL RELAY AND NEMA 1 ENCLOSURE SHALL BE CONSIDERED INCIDENTAL TO THE REINSTALL FUMIGATION FACILITY (AR801975) PAY ITEM.

**MIDAMERICA ST. LOUIS AIRPORT
ST. CLAIR COUNTY, ILLINOIS**

MIKE APRON EXPANSION - CONTRACT 1

ONE MEMORIAL DRIVE, SUITE 500
ST. LOUIS, MO 63102
(314) 436-5500

CMT
CRAWFORD, MURPHY & TILLY, INC.
CONSULTING ENGINEERS
PROFESSIONAL ENGINEERING - 184-00613

**IL PROJECT: BLV-4061
AIP PROJ: 3-17-0146-XX**

FILE: 29-32_ELECTRICAL_DETAILS.dwg

DESIGN BY: LEW
DRAWN BY: ASA
CHECKED BY: MJD/CET
APPROVED BY: BWG
DATE: JANUARY 14, 2011
JOB No: 10098-01

**ELECTRICAL
DETAILS 4**