

STATE OF ILLINOIS  
DEPARTMENT OF TRANSPORTATION

O.R. RTE.	SECTION	COUNTY	TOTAL SHEETS	SHEET NO.
24	2021-017-RS&SW	COOK	18	1
		ILLINOIS	CONTRACT NO. 62N76	

# PROPOSED HIGHWAY PLANS

O.R. ROUTE 24: KEAN ROAD  
FROM: IL-83 (CAL-SAG RD.) TO 119TH ST.  
SECTION: 2021-017-RS&SW

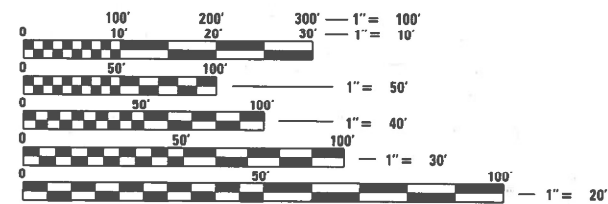
STANDARD OVERLAY, ADA IMPROVEMENTS,  
AND MILLED RUMBLE STRIP  
COOK COUNTY

THE IMPROVEMENT IS LOCATED IN THE  
VILLAGE OF PALOS PARK.

TRAFFIC DATA:  
KEAN ROAD 2010 ADT = 200  
POSTED SPEED LIMIT = 35 MPH

DESIGN DESIGNATION:  
LOCAL ROAD OR STREET

STANDARD OVERLAY BRIDGE OMISSION:  
BRIDGE OVER MILL CREEK  
STA. 18+25 TO STA. 19+38



FULL SIZE PLANS HAVE BEEN PREPARED USING STANDARD  
ENGINEERING SCALES. REDUCED SIZED PLANS WILL NOT  
CONFORM TO STANDARD SCALES. IN MAKING MEASUREMENTS  
ON REDUCED PLANS, THE ABOVE SCALES MAY BE USED.

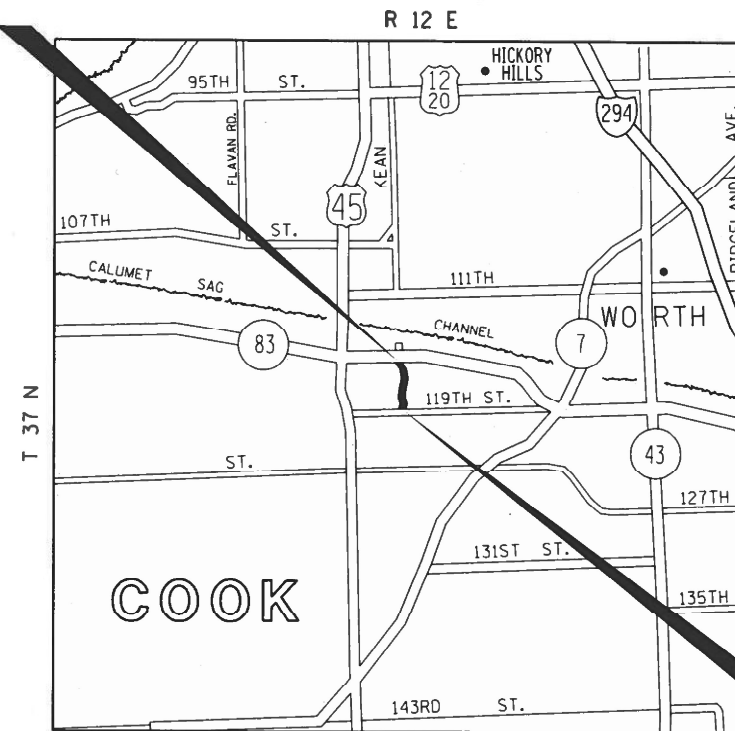
J.U.L.I.E.  
JOINT UTILITY LOCATION INFORMATION FOR EXCAVATION  
1-800-892-0123  
OR 811

PROJECT ENGINEER: LUKASZ POCIECHA (847) 705-4255  
PROJECT MANAGER: FAWAD AQUEEL

CONTRACT NO. 62N76

C-91-149-21

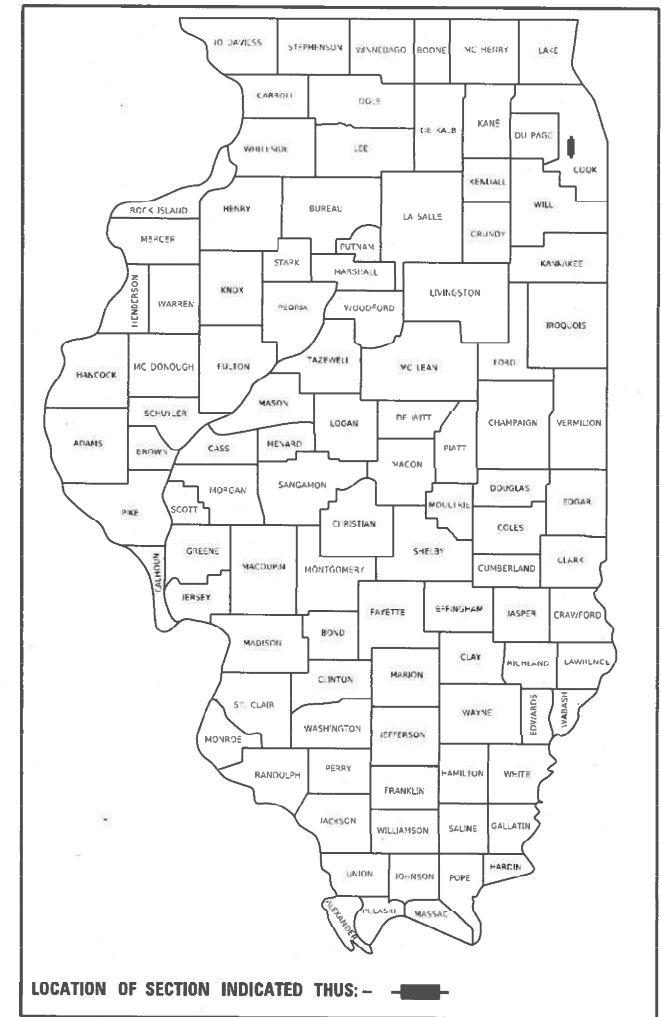
IMPROVEMENT ENDS  
STA. 42 + 97



IMPROVEMENT BEGINS  
STA. STA. 10 + 00

GROSS LENGTH = 3,297 FT. = 0.62 MILE  
NET LENGTH = 3,184 FT. = 0.60 MILE

D-91-126-21



LOCATION OF SECTION INDICATED THUS: - [black rectangle] -

STATE OF ILLINOIS  
DEPARTMENT OF TRANSPORTATION

SUBMITTED DECEMBER 10 20 21  
Jose Rodriguez REGIONAL ENGINEER  
February 4, 2022  
[Signature] ENGINEER OF DESIGN AND ENVIRONMENT  
February 4, 2022  
Stephen M. Smith DIRECTOR OF HIGHWAYS PROJECT IMPLEMENTATION

PRINTED BY THE AUTHORITY  
OF THE STATE OF ILLINOIS

**INDEX OF SHEETS**

**STATE STANDARDS**

**GENERAL NOTES (CONTINUED)**

SHEET NO.	DESCRIPTION
1	COVER SHEET
2	INDEX OF SHEETS, STATE STANDARDS & GENERAL NOTES
3-5	SUMMARY OF QUANTITIES
6	TYPICAL SECTIONS
7-8	ROADWAY AND PAVEMENT MARKING PLANS
9-10	PROPOSED LANDSCAPING DETAILS
11	DISTRICT ONE ADA CURB RAMP DETAIL (PD-01)
12	BD-22: PAVEMENT PATCHING FOR HMA SURFACED PAVEMENT
13	BD-32: BUTT JOINT AND HMA TAPER DETAILS
14	BD-55: RUMBLE STRIPES FOR CENTERLINE, NON-FREEWAY
15	TC-10: TRAFFIC CONTROL AND PROTECTION FOR SIDE ROADS, INTERSECTIONS AND DRIVEWAYS
16	TC-11: TYPICAL APPLICATIONS: RAISED REFLECTIVE PAVEMENT MARKERS (SNOW-PLOW RESISTANT)
17	TC-13: DISTRICT ONE TYPICAL PAVEMENT MARKINGS
18	TC-22: ARTERIAL ROAD INFORMATION SIGN

STANDARD NO.	DESCRIPTION
000001-08	STANDARD SYMBOLS, ABBREVIATIONS AND PATTERNS.
424001-11	PERPENDICULAR CURB RAMPS FOR SIDEWALKS
442201-03	CLASS C AND D PATCHES.
482011-03	HMA SHLD. STRIPS/SHLDS. WITH RESURFACING OR WIDENING AND RESURFACING PROJECTS
542301-03	PRECAST REINFORCED CONCRETE FLARED END SECTION.
701001-02	OFF-RD OPERATIONS, 2L, 2W, MORE THAN 15' (4.5 m) AWAY.
701006-05	OFF-RD OPERATIONS, 2L, 2W, 15' (4.5 m) TO 24" (600 mm) FROM PAVEMENT EDGE.
701011-04	OFF-RD MOVING OPERATIONS, 2L, 2W, DAY ONLY.
701301-04	LANE CLOSURE, 2L, 2W, SHORT TIME OPERATIONS.
701311-03	LANE CLOSURE 2L, 2W, MOVING OPERATIONS, DAY ONLY.
701501-06	URBAN LANE CLOSURE, 2L, 2W, UNDIVIDED.
701801-06	SIDEWALK, CORNER OR CROSSWALK CLOSURE.
701901-08	TRAFFIC CONTROL DEVICES.
720001-01	SIGN PANEL MOUNTING DETAILS.
720006-04	SIGN PANEL ERECTION DETAILS.
728001-01	TELESCOPING STEEL SIGN SUPPORT.

- BEFORE BEGINNING ANY WORK, THE CONTRACTOR SHALL RETAIN AND RECORD FOR FUTURE REFERENCE, ALL EXISTING PAVEMENT MARKING LINES (AND RAISED REFLECTIVE PAVEMENT MARKERS) IN ORDER THAT THESE LOCATIONS CAN BE RE-ESTABLISHED FOR STRIPING. EXACT LOCATIONS OF ALL PAVEMENT MARKINGS SHALL BE AS SHOWN ON THE PLANS OR AS DIRECTED BY THE ENGINEER.
- WHEN MILLED PAVEMENT IS OPEN TO TRAFFIC, THE MAXIMUM GRADE DIFFERENTIAL BETWEEN PASSES OF THE MILLING MACHINE SHALL NOT EXCEED 1½ INCHES WHERE THE SPEED LIMIT IS 45 MPH OR LESS, AND 1 INCH WHERE THE SPEED LIMIT IS OVER 45 MPH. WITH WRITTEN APPROVAL FROM THE RESIDENT ENGINEER, A MAXIMUM GRADE DIFFERENTIAL OF 3 INCHES MAY BE ALLOWED IF THE EDGE OF THE MILLING IS SLOPED A MINIMUM OF 1V:3H. THE CONTRACTOR WILL NOT BE PAID EXTRA IF MULTIPLE PASSES OR SCABBING REMOVAL IS REQUIRED.
- ANY LOOSE MATERIAL DEPOSITED IN THE FLOW LINE OF CURB OR DRAINAGE STRUCTURES, WHICH OBSTRUCTS THE NATURAL FLOW OF WATER, SHALL BE REMOVED AT THE CLOSE OF EACH WORKING DAY.
- EXISTING BROKEN FRAMES AND LIDS SHALL BE REMOVED AND DISPOSED OF BY THE CONTRACTOR AND SHALL BE REPLACED AS DIRECTED BY THE ENGINEER. REPLACEMENT FRAMES AND LIDS WILL BE PAID FOR ACCORDING TO ARTICLE 109.04 OF THE STANDARD SPECIFICATIONS, UNLESS A SEPARATE PAY ITEM HAS BEEN PROVIDED.
- THE CONTRACTOR SHALL USE CARE IN GRADING OR EXCAVATING NEAR ANY AND ALL EXISTING ITEMS THAT WILL NOT BE REMOVED INCLUDING PREVIOUSLY SEEDED AREAS. ANY DAMAGE DONE TO EXISTING ITEMS BY THE CONTRACTOR SHALL BE REPAIRED AT THE CONTRACTOR'S OWN EXPENSE TO THE SATISFACTION OF THE ENGINEER.
- BUTT JOINTS WILL BE INSTALLED AT THE ENDS OF RESURFACING (WHERE RESURFACING MEETS EXISTING PAVEMENT) IN ACCORDANCE WITH THE "BUTT JOINT AND HMA TAPER DETAILS" SHEET INCLUDED IN THE PLANS, UNLESS OTHERWISE SPECIFIED.
- THE RESIDENT ENGINEER SHALL CONTACT PATRICE HARRIS, AREA TRAFFIC FIELD ENGINEER, VIA E-MAIL AT PATRICE.HARRIS@ILLINOIS.GOV, A MINIMUM OF 2 WEEKS PRIOR TO PLACEMENT OF PERMANENT PAVEMENT MARKINGS.
- ALL DAMAGE TO EXISTING PAVEMENT MARKINGS OR RAISED REFLECTIVE PAVEMENT MARKERS OUTSIDE THE REMOVAL LINE SHOWN ON THE PLANS SHALL BE REPLACED AT NO ADDITIONAL COST TO THE DEPARTMENT.
- ANY PAVEMENT MARKINGS AND RAISED REFLECTIVE PAVEMENT MARKERS OBLITERATED BY MILLING AND RESURFACING OPERATIONS ON SIDE STREETS AND ENTRANCES SHALL BE REPLACED AND PAID FOR IN KIND.
- THE GENERAL CONTRACTOR IS REQUIRED TO HIRE AN ENVIRONMENTAL FIRM TO CONTINUOUSLY MONITOR FOR WORKER SAFETY AND SOIL CONTAMINATION AT SEVERAL LOCATIONS. SEE SPECIAL PROVISION AND SUPPLEMENTAL SPECIFICATIONS FOR DETAILS.
- IT SHALL BE THE CONTRACTOR'S RESPONSIBILITY TO VERIFY ALL DIMENSIONS AND CONDITIONS EXISTING IN THE FIELD PRIOR TO CONSTRUCTION AND ORDERING OF MATERIALS.
- THE CONTRACTOR SHALL BE REQUIRED TO PROVIDE ACCESS TO ABUTTING PROPERTY AT ALL TIMES DURING THE CONSTRUCTION OF THIS PROJECT.
- PAVEMENT PATCHING LOCATIONS WILL BE DETERMINED IN THE FIELD BY THE RESIDENT ENGINEER / TECHNICIAN.
- PAVEMENT MARKING TAPE, TYPE III SHALL BE USED FOR SHORT TERM PAVEMENT MARKINGS ON ALL FINAL SURFACES.
- THE CONTRACTOR SHALL MAINTAIN PEDESTRIAN ACCESS AT ALL TIMES DURING CONSTRUCTION.
- GAPS BETWEEN SUCCESSIVE LANE CLOSURES SHALL NOT BE LESS THAN 2 MILES (3 KM) IN LENGTH ACCORDING TO ARTICLE 701.05 MAXIMUM LENGTH OF LANE CLOSURE
- DO NOT SCALE PLANS FOR CONSTRUCTION DIMENSIONS.
- ALL SIDE CURB FOR ADA SIDEWALK WILL NOT BE PAID SEPARATELY BUT MEASURED IN SF AS PART OF THE SIDEWALK.
- CONTACT THE IDOT ROADSIDE DEVELOPMENT UNIT AT 847-705-4171 AT LEAST 2 WEEKS PRIOR TO BEGINNING LANDSCAPE AND FORESTRY WORK FOR LAYOUT.

**GENERAL NOTES**

- BEFORE STARTING ANY EXCAVATION, THE CONTRACTOR SHALL CALL "JULIE" AT (800) 892-0123 OR 811 FOR FIELD LOCATIONS OF BURIED ELECTRIC, TELEPHONE, AND GAS FACILITIES. (48 HOUR NOTIFICATION REQUIRED)
- THE CONTRACTOR SHALL COORDINATE CONSTRUCTION ACTIVITIES WITH UTILITY COMPANIES WITHIN THE VILLAGE OF PALOS PARK.
- THE CONTRACTOR SHALL CONTACT DISTRICT ONE ARTERIAL TRAFFIC CONTROL SUPERVISOR AT KALPANA.KANNAN-HOSADURGA@ILLINOIS.GOV A MINIMUM OF 72 HOURS IN ADVANCE OF BEGINNING WORK.
- THE CONTRACTOR WILL NOT BE ALLOWED TO SET UP A YARD OR FIELD OFFICE ON STATE PROPERTY WITHOUT THE WRITTEN PERMISSION OF THE DEPARTMENT.
- UNLESS OTHER CONDITIONS WARRANT EXTENDED LANE CLOSURE AS DETERMINED AND APPROVED IN WRITING BY THE RESIDENT ENGINEER OR AS PROVIDED FOR IN THE CONTRACT SPECIFICATIONS, OVERNIGHT CLOSURES SHALL NOT BE ALLOWED FOR REHABILITATION PROJECTS INVOLVING DAYTIME MILLING AND RESURFACING OPERATIONS AND CLASS D PATCHING.

MODEL: Default  
 FILE NAME: p:\project-pw-bentley.com\p\id\dot\documents\dot\office\distric...  
 PROJECT ID: 1262\UCAD\DATA\Design\DD1262\1-ah-egenecr.dgn

USER NAME = paraynoal	DESIGNED -	REVISED -	<b>STATE OF ILLINOIS DEPARTMENT OF TRANSPORTATION</b>	<b>KEAN ROAD ( IL-83 (CAL-SAG ROAD) TO 119TH STREET ) INDEX OF SHEETS, STATE STANDARDS &amp; GENERAL NOTES</b>	O.R. RTE.	SECTION	COUNTY	TOTAL SHEETS	SHEET NO.	
	DRAWN -	REVISED -			24	2021-017-R5&SW	COOK	18	2	
PLOT SCALE = 100,0000 ' / in.	CHECKED -	REVISED -			CONTRACT NO. 62N76					
PLOT DATE = 12/15/2021	DATE -	REVISED -			SCALE:	SHEET	OF	SHEETS	STA.	TO
					ILLINOIS FED. AID PROJECT					

SUMMARY OF QUANTITIES			TOTAL QUANTITIES URBAN	CONSTRUCTION TYPE CODE					
CODE NO	ITEM	UNIT		0005 100% STATE	0005 100% STATE				
20100110	TREE REMOVAL ( 6 OVER 15 UNITS DIAMETER)	UNIT	16	16					
20200100	EARTH EXCAVATION	CU YD	40	40					
21101615	TOPSOIL FURNISH AND PLACE, 4"	SO YD	55	55					
25200110	SODDING, SALT TOLERANT	SO YD	55	55					
25200200	SUPPLEMENTAL WATERING	UNIT	0.6	0.6					
40600290	BITUMINOUS MATERIALS ( TACK COAT)	POUND	6187	6187					
40600370	LONGITUDINAL JOINT SEALANT	FOOT	3471	3471					
40600400	MIXTURE FOR CRACKS, JOINTS, AND FLANGEWAYS	TON	28	28					
40600982	HOT-MIX ASPHALT SURFACE REMOVAL - BUTT JOINT	SO YD	195	195					
40603200	POLYMERIZED HOT-MIX ASPHALT BINDER COURSE, IL-4.75, N50	TON	379	379					
40604060	HOT-MIX ASPHALT SURFACE COURSE, IL-9.5, MIX "D", N50	TON	770	770					
42001300	PROTECTIVE COAT	SO YD	45	45					
42400200	PORTLAND CEMENT CONCRETE SIDEWALK 5 INCH	SO FT	400	400					

SUMMARY OF QUANTITIES			TOTAL QUANTITIES URBAN	CONSTRUCTION TYPE CODE					
CODE NO	ITEM	UNIT		0005 100% STATE	0005 100% STATE				
42400800	DETECTABLE WARNINGS	SO FT	80	80					
44000158	HOT-MIX ASPHALT SURFACE REMOVAL, 2 1/4"	SO YD	9165	9165					
44000600	SIDEWALK REMOVAL	SO FT	400	400					
44201803	CLASS D PATCHES, TYPE II, 13 INCH	SO YD	90	90					
44201807	CLASS D PATCHES, TYPE III, 13 INCH	SO YD	75	75					
44201809	CLASS D PATCHES, TYPE IV, 13 INCH	SO YD	140	140					
48102100	AGGREGATE WEDGE SHOULDER, TYPE B	TON	153	153					
50104400	CONCRETE HEADWALL REMOVAL	EACH	2	2					
54213669	PRECAST REINFORCED CONCRETE FLARED END SECTIONS 24"	EACH	2	2					
60920024	PIPE CULVERTS TO BE CLEANED 24"	FOOT	30	30					
* 66900200	NON-SPECIAL WASTE DISPOSAL	CU YD	40	40					
* 66900530	SOIL DISPOSAL ANALYSIS	EACH	2	2					
* 66901001	REGULATED SUBSTANCES PRE-CONSTRUCTION PLAN	LSUM	1	1					

\* SPECIALTY ITEMS

FILE NAME =	USER NAME = paragnol	DESIGNED -	REVISED -
pw\N\dot-pw\benley.com\PW\DOT\Documents\DOT_Offices\Distric\N\Projects\DI1262\NCAD\dot\Design\DI12621-st-504.d		DRAWN -	REVISED -
	PLOT SCALE = 100.0000' / 1in	CHECKED -	REVISED -
	PLOT DATE = 12/15/2021	DATE -	REVISED -

**STATE OF ILLINOIS  
DEPARTMENT OF TRANSPORTATION**

**KEAN ROAD ( IL-83 (CAL-SAG ROAD) TO 119TH STREET )  
SUMMARY OF QUANTITIES**

SCALE: SHEET NO. OF SHEETS STA. TO STA.

O.R. RTE.	SECTION	COUNTY	TOTAL SHEETS	SHEET NO.
24	2021-017-RS&SW	COOK	18	3
FED. ROAD DIST. NO. 1 ILLINOIS FED. AID PROJECT			CONTRACT NO. 62N76	

SUMMARY OF QUANTITIES			TOTAL QUANTITIES URBAN	CONSTRUCTION TYPE CODE				
CODE NO	ITEM	UNIT		0005 100% STATE	0005 100% STATE			
* 66901003	REGULATED SUBSTANCES FINAL CONSTRUCTION REPORT	LSUM	1	1				
* 66901006	REGULATED SUBSTANCES MONITORING	CAL DA	6	6				
67100100	MOBILIZATION	L SUM	1	1				
70102620	TRAFFIC CONTROL AND PROTECTION, STANDARD 701501	L SUM	1	1				
70102640	TRAFFIC CONTROL AND PROTECTION, STANDARD 701801	L SUM	1	1				
70300100	SHORT TERM PAVEMENT MARKING	FOOT	3161	3161				
70300150	SHORT TERM PAVEMENT MARKING REMOVAL	SO FT	1318	1318				
70300221	TEMPORARY PAVEMENT MARKING - LINE 4" - PAINT	FOOT	12500	12500				
70300241	TEMPORARY PAVEMENT MARKING - LINE 6" - PAINT	FOOT	90	90				
70300261	TEMPORARY PAVEMENT MARKING - LINE 12" - PAINT	FOOT	170	170				
70300281	TEMPORARY PAVEMENT MARKING - LINE 24" - PAINT	FOOT	50	50				

SUMMARY OF QUANTITIES			TOTAL QUANTITIES URBAN	CONSTRUCTION TYPE CODE				
CODE NO	ITEM	UNIT		0005 100% STATE	0005 100% STATE			
70306120	TEMPORARY PAVEMENT MARKING - LINE 4" - TYPE III TAPE	FOOT	791	791				
72000100	SIGN PANEL - TYPE 1	SO FT	51	51				
72800100	TELESCOPING STEEL SIGN SUPPORT	FOOT	60	60				
* 78000200	THERMOPLASTIC PAVEMENT MARKING - LINE 4"	FOOT	6504	6504				
* 78000400	THERMOPLASTIC PAVEMENT MARKING - LINE 6"	FOOT	90	90				
* 78000600	THERMOPLASTIC PAVEMENT MARKING - LINE 12"	FOOT	170	170				
* 78000650	THERMOPLASTIC PAVEMENT MARKING - LINE 24"	FOOT	50	50				
* 78100100	RAISED REFLECTIVE PAVEMENT MARKER	EACH	140	140				
78300200	RAISED REFLECTIVE PAVEMENT MARKER REMOVAL	EACH	130	130				
78300202	PAVEMENT MARKING REMOVAL - WATER BLASTING	SO FT	4351	4351				
X0320050	CONSTRUCTION LAYOUT (SPECIAL)	L SUM	1	1				
X0326898	CENTER LINE - RUMBLE STRIP - 16"	FOOT	3471	3471				
X2020110	GRADING AND SHAPING SHOULDERS	UNIT	68	68				

\* SPECIALTY ITEMS

FILE NAME =	USER NAME = parqnool	DESIGNED -	REVISED -
pw\N\dot-pw-bentley.com\PWIDOT\Documents\1007 - Office\Dist\1\2\Projects\DI1262\CAAD\1\Design\DI12621-st-504.d		DRAWN -	REVISED -
		CHECKED -	REVISED -
		DATE -	REVISED -

STATE OF ILLINOIS  
DEPARTMENT OF TRANSPORTATION

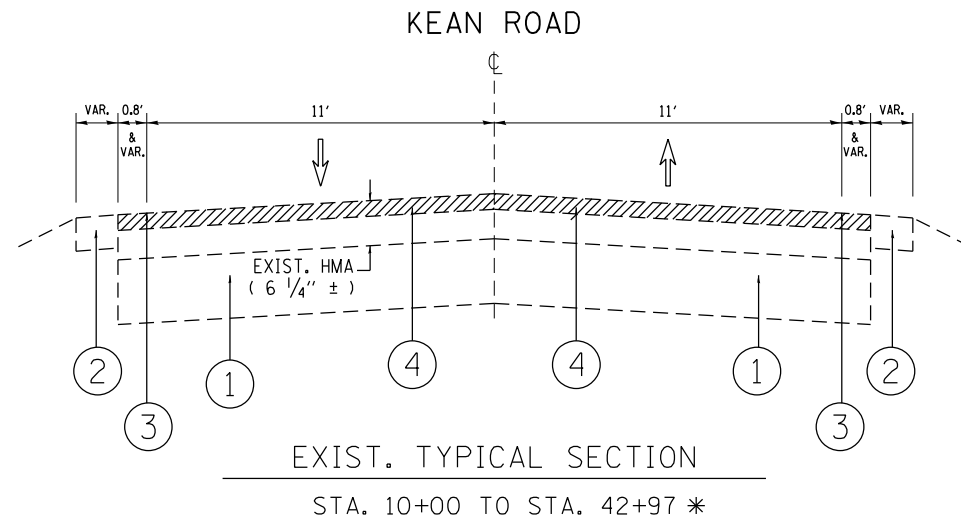
KEAN ROAD ( IL-83 (CAL-SAG ROAD) TO 119TH STREET )  
SUMMARY OF QUANTITIES

SCALE: SHEET NO. OF SHEETS STA. TO STA.

O.R. RTE.	SECTION	COUNTY	TOTAL SHEETS	SHEET NO.
24	2021-017-RS&SW	COOK	18	4
CONTRACT NO. 62N76				
FED. ROAD DIST. NO. 1 ILLINOIS FED. AID PROJECT				

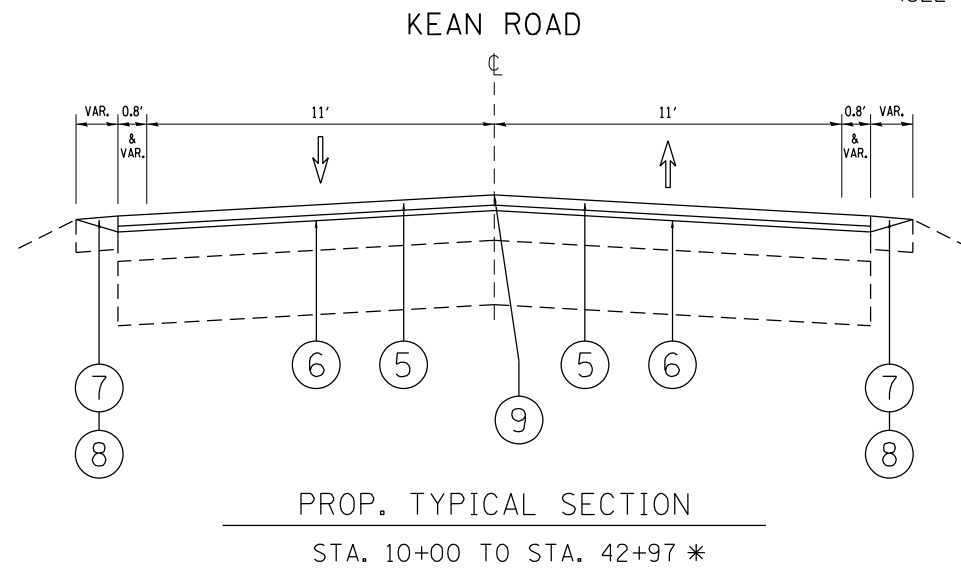






\* STANDARD OVERLAY BRIDGE OMISSION:

BRIDGE OVER MILL CREEK  
STA. 18+25 TO STA. 19+38  
(SEE COVER SHEET AND ROADWAY PLAN)



**LEGEND**

- ① EXISTING P.C.C. PAVEMENT, ± 9"
- ② EXISTING AGGREGATE SHOULDER
- ③ EXISTING WHITE EDGE STRIPING
- ④ PROP. HMA SURFACE REMOVAL, 2 1/4"
- ⑤ PROP. HMA SURFACE COURSE, MIX "D", IL-9.5, N50, 1 1/2"
- ⑥ PROP. POLY. HMA BINDER COURSE, IL-4.75, N50, 3/4"
- ⑦ PROP. AGGREGATE WEDGE SHOULDER, TYPE B
- ⑧ PROP. GRADING AND SHAPING SHOULDERS
- ⑨ PROP. CENTER LINE - RUMBLE STRIP - 16"

**HOT-MIX ASPHALT MIXTURE REQUIREMENTS**

MIXTURE TYPE	AIR VOIDS @ N <sub>DES</sub>	QMP
<i>ROADWAY STANDARD OVERLAY:</i>		
HMA SURFACE COURSE, MIX "D", IL-9.5, N50, 1 1/2"	4% AT 50 GYR.	QC / QA
POLY. HMA BINDER COURSE, IL-4.75, N50, 3/4"	3.5% AT 50 GYR.	QC / QA
<i>HOT-MIX ASPHALT PATCHING:</i>		
CLASS D PATCHES (HMA BINDER IL-19 mm), 13"	4% AT 70 GYR.	QC / QA

QMP Designation: Quality Control/Quality Assurance (QC/QA).

**NOTES:**

1. THE CONTRACTOR SHALL MILL THE ROADWAY FIRST, THEN DO PAVEMENT PATCHING PER BD-22 DETAIL.
2. THE PROPOSED LOGITUDINAL JOINT SEALANT SHALL BE PLACED OVER THE POLY. HMA BINDER COURSE, IL-4.75, N50.

**NOTES:**

THE UNIT WEIGHT USED TO CALCULATE ALL HMA SURFACE MIXTURE QUANTITIES IS 112 LBS/SQ YD/IN.  
THE "AC TYPE" FOR POLYMERIZED HMA MIXES SHALL BE "SBS/SBR PG 76 -22" AND FOR NON-POLYMERIZED HMA THE "AC TYPE" SHALL BE "PG 64 -22" UNLESS MODIFIED BY RECLAIMED MATERIALS SPECIFICATIONS.

MODEL: Default  
FILE NAME: p:\projects\aw\_bentley.com\p\indot\documents\dot\_office\dir\rdt\_1\project\11262\1\cadd\data\design\11262\_1\sh-rz\p1c1.dgn

USER NAME = paraynoal	DESIGNED -	REVISED -
PLOT SCALE = 100,0000 ' / in.	DRAWN -	REVISED -
PLOT DATE = 12/15/2021	CHECKED -	REVISED -
	DATE -	REVISED -

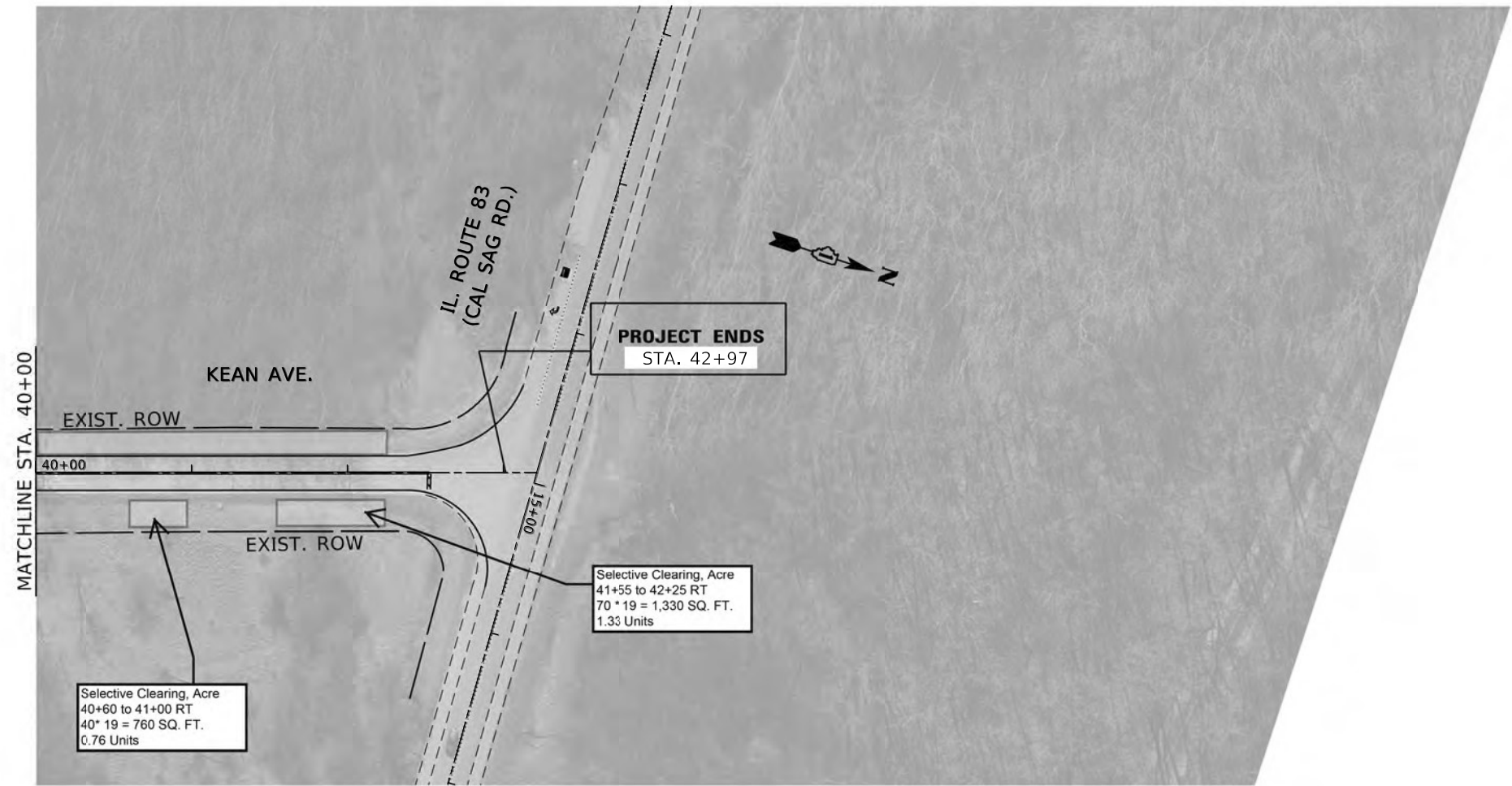
**STATE OF ILLINOIS  
DEPARTMENT OF TRANSPORTATION**

<b>KEAN ROAD ( IL-83 (CAL-SAG ROAD) TO 119TH STREET ) EXISTING AND PROPOSED TYPICAL SECTIONS</b>		O.R. RTE.	SECTION	COUNTY	TOTAL SHEETS	SHEET NO.
SCALE:	SHEET OF SHEETS	STA.	TO STA.	ILLINOIS	FED. AID PROJECT	
				24	2021-017-R5&SW	COOK 18 6
						CONTRACT NO. 62N76









Selective Clearing, Acre  
40+60 to 41+00 RT  
40' \* 19' = 760 SQ. FT.  
0.76 Units

PROJECT ENDS  
STA. 42+97

Selective Clearing, Acre  
41+55 to 42+25 RT  
70' \* 19' = 1,330 SQ. FT.  
1.33 Units

MODEL: Default  
FILE: Mainfile.dwg  
PROJECT: C:\Users\paraynoal\Documents\DOT Office\District 11\Project\112621\CADD\Drawings\112621-11-11-2021-11-11-2021.dwg

USER NAME = paraynoal	DESIGNED -	REVISED -
PLOT SCALE = 100,0000 ' / in.	DRAWN -	REVISED -
PLOT DATE = 12/15/2021	CHECKED -	REVISED -
	DATE -	REVISED -

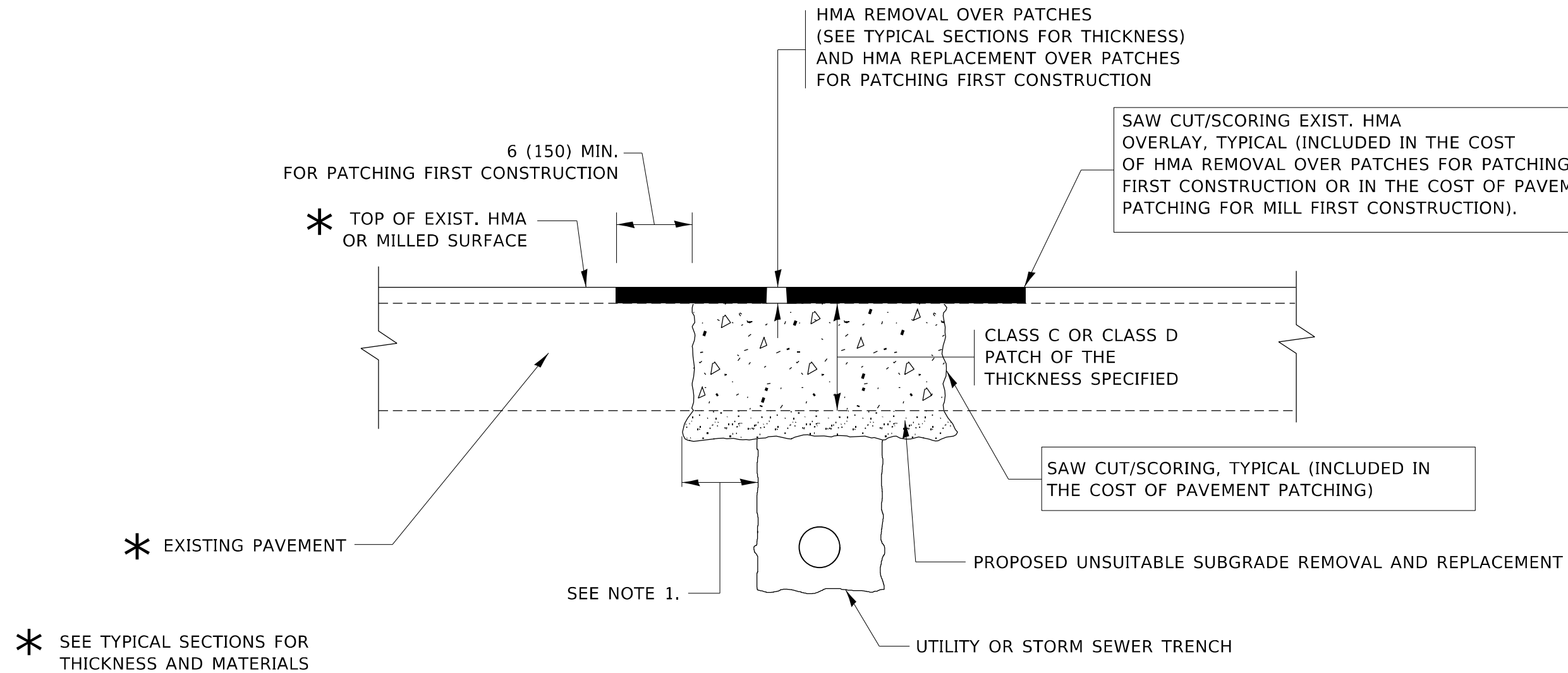
**STATE OF ILLINOIS  
DEPARTMENT OF TRANSPORTATION**

**LANDSCAPING PLAN  
KEAN ROAD ( IL-83 (CAL-SAG ROAD) TO 119TH STREET )**

SCALE: 1"=50' SHEET OF SHEETS STA. TO STA.

O.R. RTE.	SECTION	COUNTY	TOTAL SHEETS	SHEET NO.
24	2021-017-R5&SW	COOK	18	10
CONTRACT NO. 62N76			ILLINOIS FED. AID PROJECT	





**NOTES:**

1. THE WIDTH OF THE FULL DEPTH PATCH OVER A TRENCH SHALL BE 12 (300) WIDER ON EACH SIDE OF THE TRENCH.
2. FOR METHOD OF MEASUREMENT AND BASIS OF PAYMENT, SEE RECURRING SPECIAL PROVISION "PATCHING WITH HOT-MIX ASPHALT OVERLAY REMOVAL".

**SEQUENCE OF CONSTRUCTION (PATCHING FIRST)**

1. REMOVE THE EXISTING HMA MATERIAL OVER THE AREA TO BE PATCHED.
2. REMOVE AND REPLACE WITH CLASS C OR D PATCH.
3. REPLACE HMA MATERIAL OVER THE AREA TO BE PATCHED.

**SEQUENCE OF CONSTRUCTION (MILLING FIRST)**

1. MILL HMA FIRST IF THERE IS AT LEAST 4½ INCHES OR MORE OF HMA MATERIAL ON TOP OF THE EXISTING PAVEMENT OR IF THE PAVEMENT IS FULL DEPTH HMA. A MINIMUM OF 2 INCHES OF HMA MATERIAL SHALL BE IN PLACE AFTER MILLING.
2. REMOVE AND REPLACE WITH FULL DEPTH CLASS D PATCHES TO TOP OF MILLED SURFACE.

ALL DIMENSIONS ARE IN INCHES (MILLIMETERS) UNLESS OTHERWISE SHOWN.

MODEL: Default  
FILE NAME: p:\project\paw\bea\paw.com\p\w\DOT\Documents\DOT Office\Drawings\112621\CADD\data\Design\BdFSt.dgn

USER NAME = paraynoal	DESIGNED - R. SHAH	REVISED - A. ABBAS 04-27-98
	DRAWN -	REVISED - R. BORO 01-01-07
PLOT SCALE = 100,0000' / in.	CHECKED -	REVISED - R. BORO 09-04-07
PLOT DATE = 12/15/2021	DATE - 10-25-94	REVISED - K. ENG 10-27-08

**STATE OF ILLINOIS  
DEPARTMENT OF TRANSPORTATION**

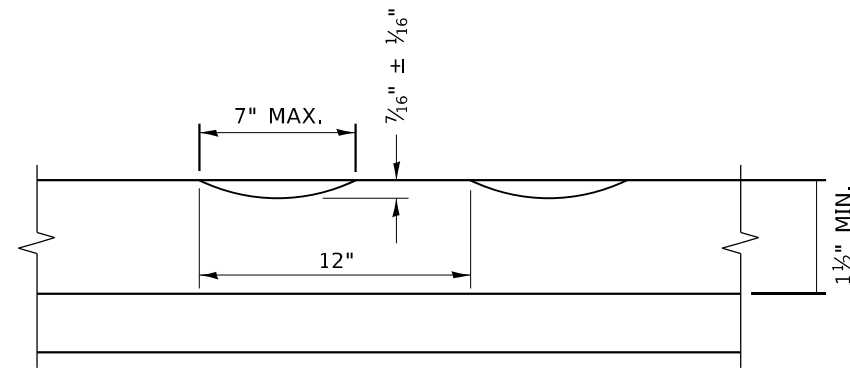
**PAVEMENT PATCHING FOR  
HMA SURFACED PAVEMENT**

SCALE: NONE SHEET 1 OF 1 SHEETS STA. TO STA.

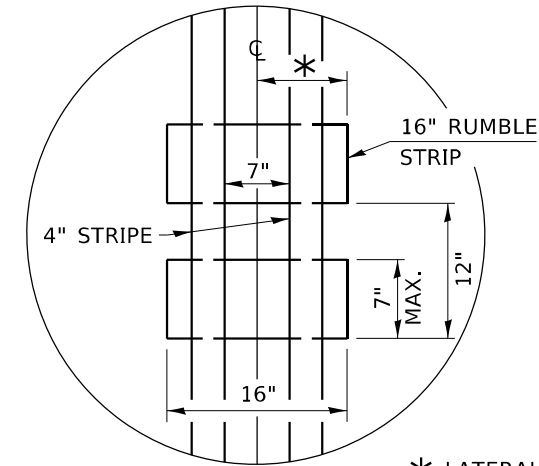
F.A. RTE.	SECTION	COUNTY	TOTAL SHEETS	SHEET NO.
24	2021-017-R5&SW	COOK	18	12
<b>BD400-04 (BD-22)</b>		CONTRACT NO. 62N76		
ILLINOIS FED. AID PROJECT				







**SECTION A-A**



\* LATERAL DEVIATION SHALL NOT EXCEED ONE INCH IN 100 FEET.

**DETAIL B**

**GENERAL NOTES**

CENTERLINE RUMBLE STRIPS SHALL BE CONSTRUCTED ACCORDING TO SECTION 642 ALONG THE CENTERLINE OF PAVEMENT.

SEE STANDARD 780001 FOR OTHER STRIPING LAYOUTS. RUMBLE STRIPS SHALL NOT BE PLACED ON BRIDGES.

ALL RUMBLE STRIPS SHALL BE MILLED.

CENTERLINE RUMBLE STRIPS SHALL BE CONTINUOUS THROUGH CONNECTIONS OF SIDEROADS WITH NO LEFT TURN LANES.

DISCONTINUE CENTERLINE RUMBLE STRIPS THROUGH THE LIMITS OF ALL LEFT TURN LANES, INCLUDING ANY LANE TAPER SECTIONS.

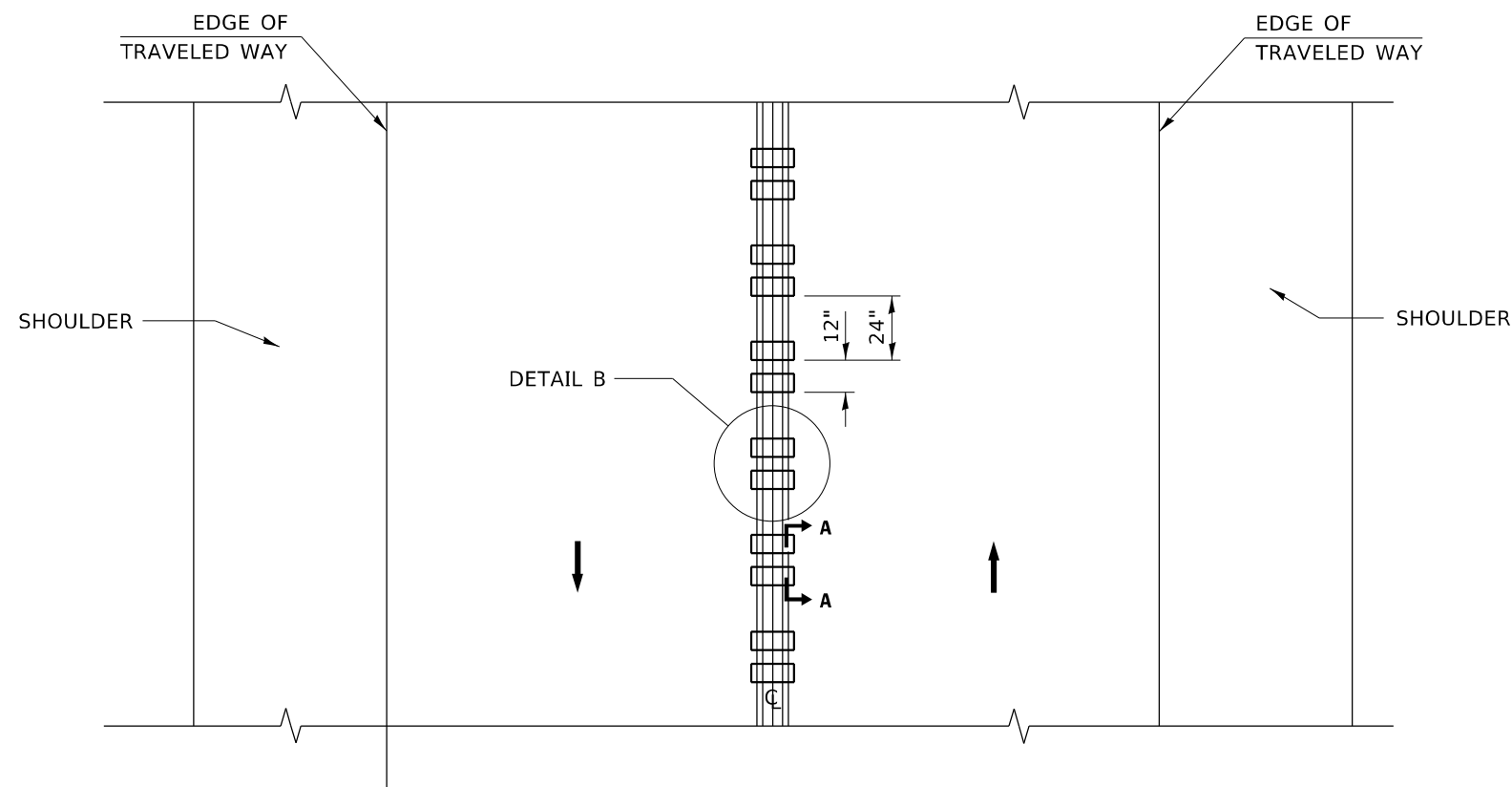
AFTER RUMBLE STRIPS ARE INSTALLED, THE PAVEMENT SURFACE SHALL BE SWEEPED CLEAN PRIOR TO THE PLACEMENT OF THE NEW PAVEMENT MARKINGS.

WHERE USED, ADJUST SPACING OF RAISED REFLECTIVE PAVEMENT MARKERS TO FALL IN WIDER GAP BETWEEN RUMBLE STRIPS.

**BASIS OF PAYMENT**

THIS WORK WILL BE PAID FOR AT THE CONTRACT UNIT PRICE PER FOOT FOR CENTERLINE-RUMBLE STRIP OF THE WIDTH SPECIFIED.

HOT-SPRAY THERMOPLASTIC PAVEMENT MARKING WILL BE USED OVER THE RUMBLE STRIPS, AND WILL BE PAID FOR SEPARATELY.



**TWO-WAY ROAD**

MODEL: Default  
FILE NAME: p:\project-new\bea\paw.com\p\w\DOT\Documents\DOT Office\District: 1\Project\112621\CADD\data\Design\Bd55.dgn

USER NAME = paraynoal	DESIGNED - R. BORO	REVISED -
	DRAWN -	REVISED -
PLOT SCALE = 100,0000' / in.	CHECKED -	REVISED -
PLOT DATE = 12/15/2021	DATE - 08-06-2012	REVISED -

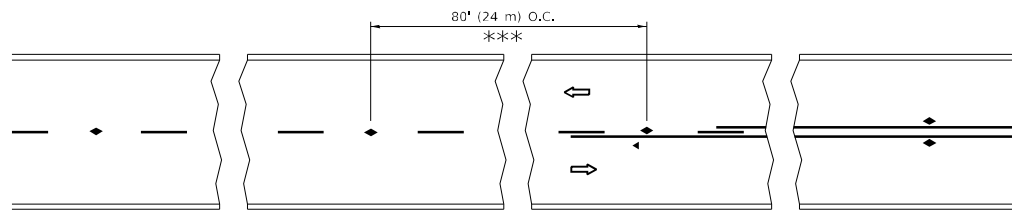
**STATE OF ILLINOIS  
DEPARTMENT OF TRANSPORTATION**

**RUMBLE STRIPS FOR CENTERLINE, NON-FREEWAY**

SCALE: NONE SHEET 1 OF 1 SHEETS STA. TO STA.

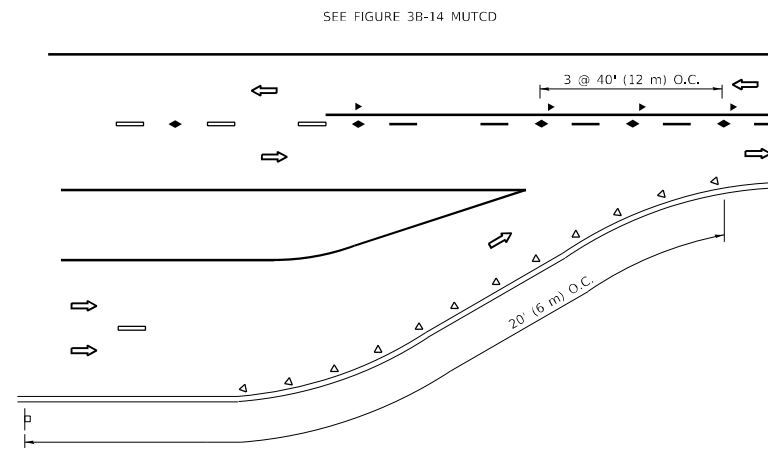
F.A. RTE.	SECTION	COUNTY	TOTAL SHEETS	SHEET NO.
24	2021-017-R5&SW	COOK	18	14
<b>BD 55</b>		CONTRACT NO. 62N76		
ILLINOIS FED. AID PROJECT				



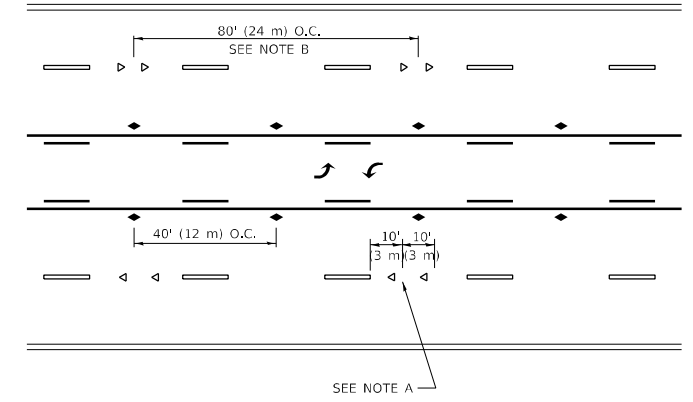


\*\*\* REDUCE TO 40' (12 m) O.C. ON CURVES WITH POSTED OR ADVISORY SPEED 45 M.P.H. (70 km/h) OR LESS.

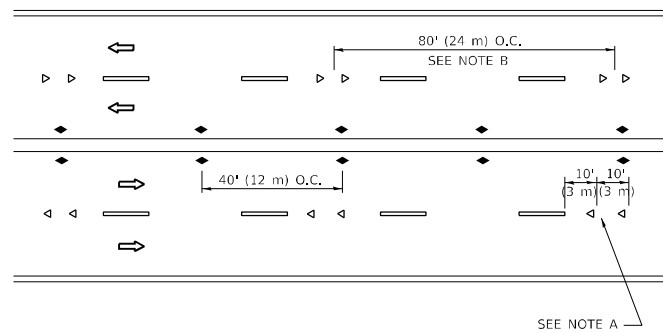
**TWO-LANE/TWO-WAY**



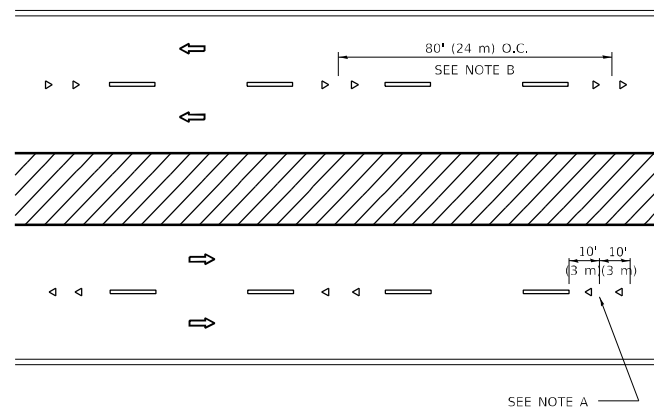
**LANE REDUCTION TRANSITION**



**TWO-WAY LEFT TURN**



**MULTI-LANE/UNDIVIDED**



**MULTI-LANE/DIVIDED**

**GENERAL NOTES**

1. MARKERS USED WITH DASHED LINES SHALL BE CENTERED IN THE GAP BETWEEN SEGMENTS.
2. MARKERS USED ADJACENT TO SOLID LINES SHALL BE OFFSET 2 TO 3 (50 TO 75) TOWARD TRAFFIC AS SHOWN.
3. MARKERS THROUGH TANGENTS LESS THAN 500' (150 m) IN LENGTH BETWEEN CURVES SHALL BE INSTALLED AT THE LESSER OF THE TWO CURVE SPACINGS.
4. MARKERS ARE TO BE USED ADJACENT TO BOTH SOLID WHITE LINES IN DUAL LEFT TURN LANES

**SYMBOLS**

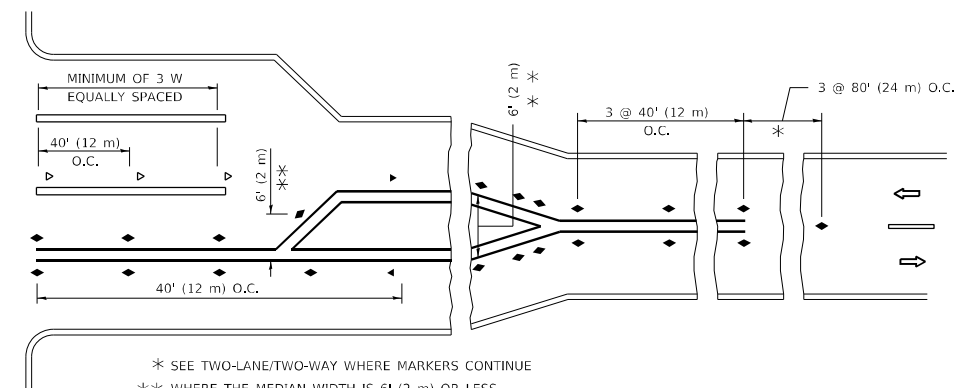
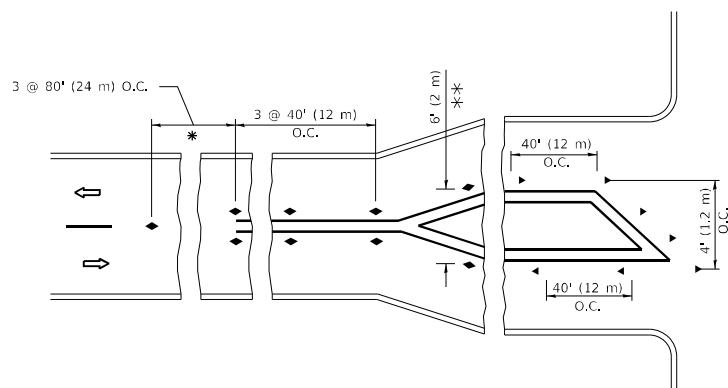
- YELLOW STRIPE
- WHITE STRIPE
- ◀ ONE-WAY AMBER MARKER
- ◀ ONE-WAY CRYSTAL MARKER (W/O)
- ◆ TWO-WAY AMBER MARKER

**LANE MARKER NOTES**

- A. USE DOUBLE LANE LINE MARKERS SPACED AS SHOWN.
- B. REDUCE TO 40' (12 m) O.C. ON CURVES WHERE ADVISORY SPEEDS ARE 10 M.P.H (20 km/h) LOWER THAN POSTED SPEEDS.

**DESIGN NOTES**

1. DOUBLE LANE LINE MARKERS SHALL BE USED UNLESS SPECIFIED OTHERWISE.
2. EXCEPT AS SHOWN ON THE LANE REDUCTION TRANSITION AND FREEWAY EXIT RAMP DETAIL, MARKERS ARE NOT TO BE SPECIFIED ON RIGHT EDGE LINES.
3. THE EXACT MARKER LIMITS, SPACING, AND COLOR SHALL BE INCLUDED IN THE PLANS WHEN STANDARD SPECIFICATIONS ARE NOT BEING USED.
4. MARKERS SHOULD NOT BE USED ALONGSIDE CURBS EXCEPT FOR EXTREMELY SHORT SECTIONS OF CURBS WHERE NOT MORE THAN TWO MARKERS WOULD BE INVOLVED.



**TURN LANES**

All dimensions are in inches (millimeters) unless otherwise shown.

MODEL Path: \\p01010101\public\aw\_bentley.com\PIV\DOT\Documents\DOT Office\Dir\rdt\_11\Project\112621\CADD\Drawings\Design\BentStg.dgn  
FILE NAME: \\p01010101\public\aw\_bentley.com\PIV\DOT\Documents\DOT Office\Dir\rdt\_11\Project\112621\CADD\Drawings\Design\BentStg.dgn

USER NAME = paraynoal	DESIGNED -	REVISED - T. RAMMACHER 03-12-99
PLOT SCALE = 100,0000' / in.	DRAWN -	REVISED - T. RAMMACHER 01-06-00
PLOT DATE = 12/15/2021	CHECKED -	REVISED - C. JUCIUS 09-09-09
	DATE -	REVISED - C. JUCIUS 07-01-13

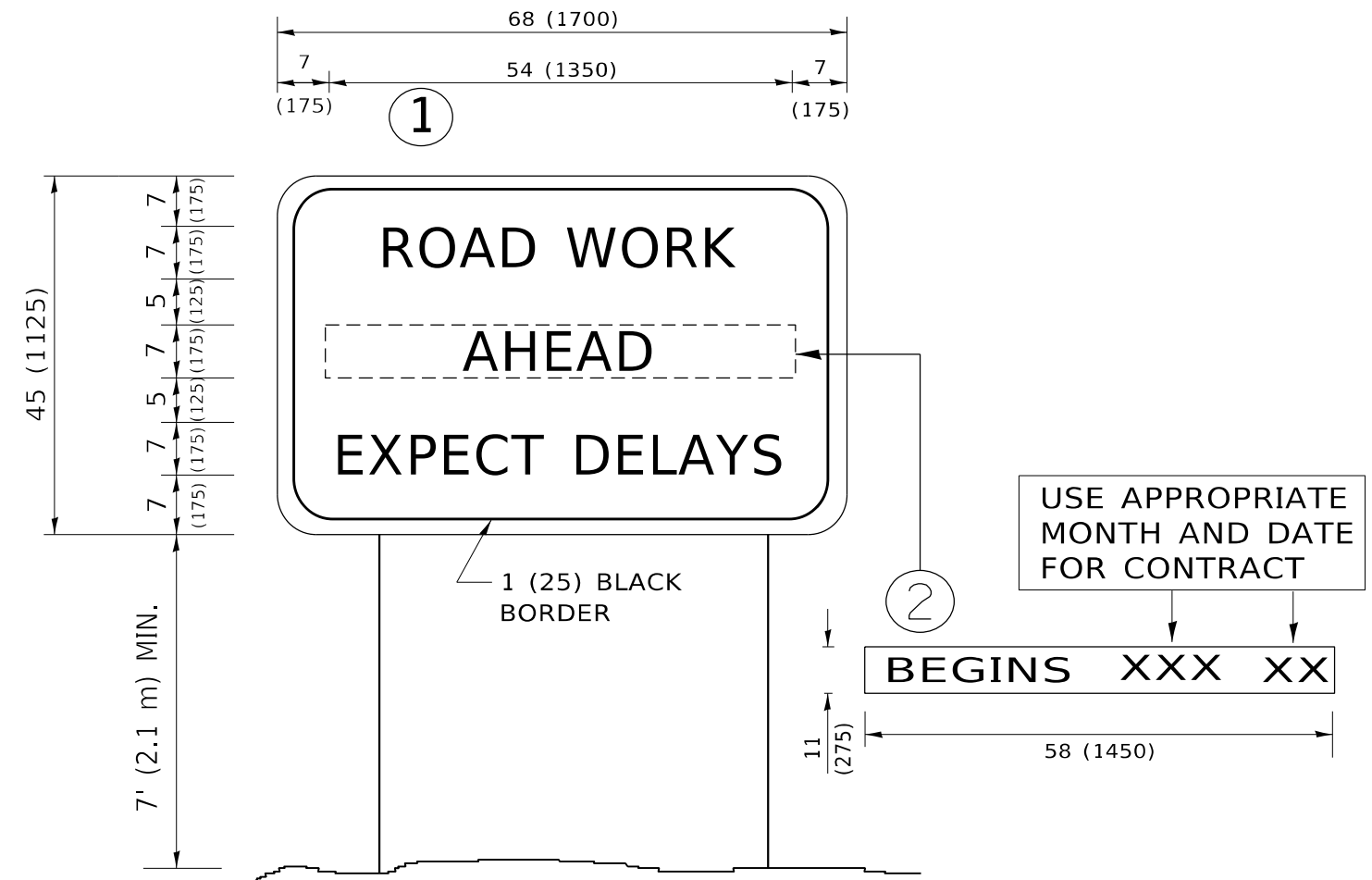
**STATE OF ILLINOIS  
DEPARTMENT OF TRANSPORTATION**

**TYPICAL APPLICATIONS  
RAISED REFLECTIVE PAVEMENT MARKERS (SNOW-PLOW RESISTANT)**

SCALE: NONE SHEET 1 OF 1 SHEETS STA. TO STA.

F.A. RTE.	SECTION	COUNTY	TOTAL SHEETS	SHEET NO.
24	2021-017-R5&SW	COOK	18	16
TC-11		CONTRACT NO. 62N76		
ILLINOIS FED. AID PROJECT				





**NOTES:**

1. USE BLACK LETTERING ON ORANGE BACKGROUND.
2. ERECT SIGNS IN ADVANCE OF THE LOCATION FOR THE "ROAD CONSTRUCTION AHEAD" SIGN AT LOCATIONS AS DIRECTED BY THE ENGINEER.
3. ERECT SIGN ① WITH INSTALLED PANEL ② ONE WEEK PRIOR TO THE START OF CONSTRUCTION.
4. REMOVE PANEL ② SOON AFTER THE START OF CONSTRUCTION.
5. SEE SPECIAL PROVISION FOR "TEMPORARY INFORMATION SIGNING" FOR ADDITIONAL INFORMATION.
6. ONE SIGN ASSEMBLY EQUALS 25.70 SQ. FT. (2.3 SQ. M.)
7. SHALL BE PAID FOR AS TEMPORARY INFORMATION SIGNING.

ALL DIMENSIONS ARE IN INCHES (MILLIMETERS) UNLESS OTHERWISE SHOWN.

MODEL: Default  
 FILE: \\mfrs-pc\public\paw.bentley.com\PIV\DOT\Documents\DOT Office\District: I\Project\11262\ICAD\data\Design\BRTStg.dgn

USER NAME = paraynoal	DESIGNED -	REVISED - R. MIRS 09-15-97
	DRAWN -	REVISED - R. MIRS 12-11-97
PLOT SCALE = 100,0000 ' / in.	CHECKED -	REVISED - T. RAMMACHER 02-02-99
PLOT DATE = 12/15/2021	DATE -	REVISED - C. JUCIUS 01-31-07

**STATE OF ILLINOIS  
DEPARTMENT OF TRANSPORTATION**

**ARTERIAL ROAD  
INFORMATION SIGN**

SCALE: NONE SHEET 1 OF 1 SHEETS STA. TO STA.

F.A. RTE.	SECTION	COUNTY	TOTAL SHEETS	SHEET NO.
24	2021-017-R5&SW	COOK	18	18
<b>TC-22</b>			CONTRACT NO. 62N76	
ILLINOIS FED. AID PROJECT				