

STATE OF ILLINOIS
DEPARTMENT OF TRANSPORTATION

**PROPOSED
HIGHWAY PLANS**

**F.A.U ROUTE 2798: CENTRAL AVE
KENNEDY MAINTENANCE YARD
5027 N. CENTRAL AVE, CHICAGO**

**SECTION: 2021-144-I
PARKING LOT IMPROVEMENT**

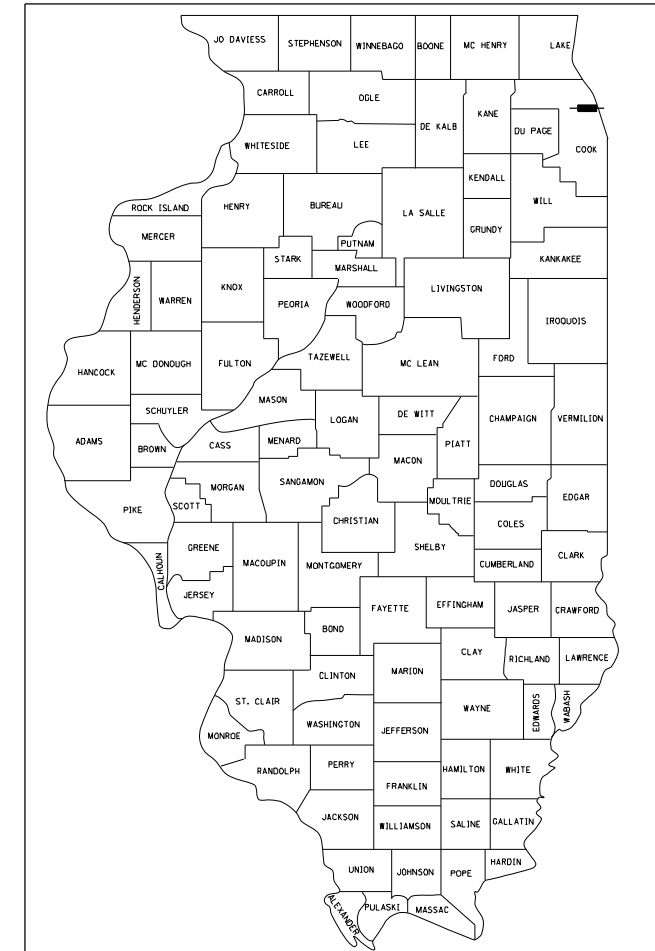
**COOK COUNTY
C-91-016-22**

FOR INDEX OF SHEETS, SEE SHEET NO. 2

PROJECT LOCATED IN:
CITY OF CHICAGO

F.A.U. RTE. 2798	SECTION 2021-144-I	COUNTY COOK	TOTAL SHEETS 14	SHEET NO. 1
FED. ROAD DIST. NO. 1		ILLINOIS	CONTRACT NO. 62P60	

D-91-025-22



LOCATION OF SECTION INDICATED THIS: - [black rectangle] -

STATE OF ILLINOIS
DEPARTMENT OF TRANSPORTATION

SUBMITTED ~~DECEMBER 9~~ 20 21
Jose Rivas
REGIONAL ENGINEER

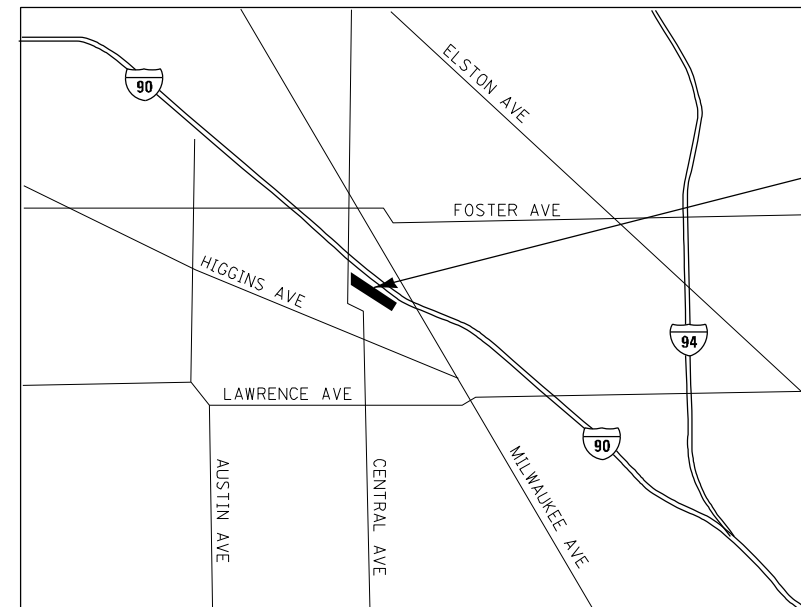
February 4 20 22
[Signature]
ENGINEER OF DESIGN AND ENVIRONMENT

February 4 20 22
Stephen M. [Signature]
DIRECTOR OF HIGHWAYS PROJECT IMPLEMENTATION



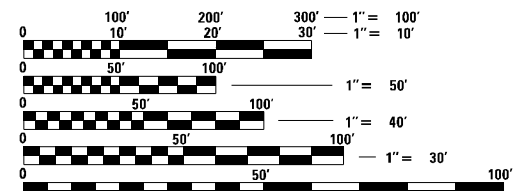
RANGE 13 E

TOWNSHIP 40N



**KENNEDY MAINTENANCE YARD
(5027 N CENTRAL AVE, CHICAGO)**

LOCATION MAP
NOT TO SCALE



FULL SIZE PLANS HAVE BEEN PREPARED USING STANDARD ENGINEERING SCALES. REDUCED SIZED PLANS WILL NOT CONFORM TO STANDARD SCALES. IN MAKING MEASUREMENTS ON REDUCED PLANS, THE ABOVE SCALES MAY BE USED.

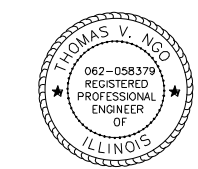
C.U.A.N.
JOINT UTILITY LOCATION INFORMATION FOR EXCAVATION
1-312-744-7000
OR 811

PROJECT ENGINEER: VESELIN VELICHKOV, P.E. (847)705-4432
PROJECT MANAGER: FAWAD AQUEEL, P.E.

CONTRACT NO. 62P60

MILLENNIA PROFESSIONAL SERVICES
THOMAS V. NGO, P.E.
062-058379

Thomas V. Ngo
DATE: 12/10/2021
SIGNATURE AND SEAL APPLIES TO DRWG NO 1 TO 29, 103-110



**PRINTED BY THE AUTHORITY
OF THE STATE OF ILLINOIS**

INDEX OF SHEETS

- 1 COVER SHEET
- 2 INDEX OF SHEETS, STATE STANDARDS, & GENERAL NOTES
- 3-5 SUMMARY OF QUANTITIES
- 6 TYPICAL SECTION
- 7 EXISTING SITE AND REMOVAL PLAN
- 8 PROPOSED SITE AND PAVEMENT MARKING PLAN
- 9 PROPOSED GRADING AND DRAINAGE PLAN
- 10 SIDEWALK DETAILS
- 11 DRIVEWAY DETAILS - DISTANCE BETWEEN R.O.W. AND FACE OF CURB < 15' (4.5m) (BD-01)
- 12 CITY OF CHICAGO DETECTABLE WARNINGS (BD-58)
- 13 TRAFFIC CONTROL AND PROTECTION FOR SIDE ROADS, INTERSECTIONS, AND DRIVEWAYS (TC-10)
- 14 DISTRICT ONE TYPICAL PAVEMENT MARKINGS (TC-13)

LIST OF HIGHWAY STANDARDS

- 000001-08 STANDARD SYMBOLS, ABBREVIATIONS, AND PATTERNS
- 604001-05 FRAME AND LIDS TYPE 1
- 606001-08 CONCRETE CURB TYPE B AND COMBINATION CONCRETE CURB AND GUTTER
- 701006-05 OFF-RD OPERATIONS, 2L, 2W, 15' (4.5m) TO 24" (600mm) FROM PAVEMENT EDGE
- 701011-04 OFF-RD MOVING OPERATIONS, 2L, 2W, DAY ONLY
- 701301-04 LANE CLOSURE, 2L, 2W, SHORT TIME OPERATIONS
- 701501-06 URBAN LANE CLOSURE, 2L, 2W, UNDIVIDED
- 701801-06 SIDEWALK, CORNER OR CROSSWALK CLOSURE

GENERAL NOTES

1. BEFORE STARTING ANY EXCAVATION, THE CONTRACTOR SHALL CALL C.U.A.N. IN CHICAGO FOR FIELD LOCATIONS OF BURIED ELECTRIC, TELEPHONE AND GAS UTILITIES. 48 HOUR NOTIFICATION IS REQUIRED.
2. THE CONTRACTOR SHALL COORDINATE CONSTRUCTION ACTIVITIES WITH THE KENNEDY TEAM SECTION TECHNICIAN JEROME BEANE AT 773-725-4733.
3. THE CONTRACTOR WILL NOT BE ALLOWED TO SET UP A YARD OR FIELD OFFICE ON STATE PROPERTY WITHOUT WRITTEN PERMISSION FROM THE DEPARTMENT.
4. BEFORE BEGINNING ANY WORK, THE CONTRACTOR SHALL RETAIN AND RECORD FOR FUTURE REFERENCES, ALL EXISTING PAVEMENT MARKING LINES AND RAISED REFLECTIVE PAVEMENT MARKERS IN ORDER THAT THESE LOCATIONS CAN BE RE-ESTABLISHED FOR STRIPING. EXACT LOCATIONS OF ALL STRIPING SHALL BE AS DIRECTED BY THE ENGINEER.
5. IT SHALL BE THE CONTRACTOR'S RESPONSIBILITY TO VERIFY ALL DIMENSIONS AND CONDITIONS EXISTING IN THE FIELD PRIOR TO CONSTRUCTION AND ORDERING OF MATERIALS.
6. THE CONTRACTOR SHALL BE REQUIRED TO PROVIDE ACCESS TO ABUTTING PROPERTY AT ALL TIMES DURING THE CONSTRUCTION OF THIS PROJECT.
7. DO NOT SCALE PLANS FOR CONSTRUCTION DIMENSIONS.
8. EXISTING BROKEN FRAMES AND LIDS SHALL BE REMOVED AND DISPOSED OF BY THE CONTRACTOR AND SHALL BE REPLACED AS DIRECTED BY THE ENGINEER. REPLACEMENT FRAMES AND LIDS WILL BE PAID FOR ACCORDING TO ARTICLE 109.04 OF THE STANDARD SPECIFICATIONS UNLESS A SEPARATE PAY ITEM HAS BEEN PROVIDED.

COMMITMENTS

NO COMMITMENTS FOR THIS PROJECT

FILE NAME = P:\2019\ME19003.Var\Var-PH1\W037.Maintenance Yard Parking Lot\01-CADD\62P60_Kennedy Yard\02-Shts\02-D162P60_sht.gcnote.dgn
 PLOT SCALE = 2.0000' / 1" = 20.0000
 USER NAME = jpham



USER NAME = jpham	DESIGNED -	REVISED -
	DRAWN -	REVISED -
PLOT SCALE = 2.0000' / 1"	CHECKED -	REVISED -
PLOT DATE = 12/3/2021	DATE -	REVISED -

**STATE OF ILLINOIS
DEPARTMENT OF TRANSPORTATION**

**KENNEDY MAINTENANCE YARD
INDEX OF SHEETS, STATE STANDARDS, AND GENERAL NOTES**

SCALE: N/A	SHEET NO. 1 OF 1 SHEETS	STA. N/A TO STA. N/A	F.A.U. RTE. 2798	SECTION 2021-144-I	COUNTY COOK	TOTAL SHEETS 14	SHEET NO. 2
			FED. ROAD DIST. NO. 1 ILLINOIS FED. AID PROJECT				
			CONTRACT NO. 62P60				

P:\2019\ME19003.Var\Var-PH1\W037.Maintenance Yard Parking Lot\01-CADD\62P60_Kennedy Yard\02-Shts\02-D162P60_sht.gcnote.dgn

FILE NAME = P:\2019\ME19003_Var\Var_PHI\W037_Maintenance Yard Parking Lot\01-CADD\62P60_Kennedy Yard\02-Shts\03-D162P60-sht-S00.dgn
 PLOT SCALE = 2.0000' / 1" = 20000
 USER NAME = trgo

PAYCODE	ITEM DESCRIPTION	UNIT	TOTAL QUANTITIES	CONST. TYPE CODE	
				URBAN	
				100% STATE	
20101200	TREE ROOT PRUNING	EACH	2	2	
20200100	EARTH EXCAVATION	CU YD	1130	1130	
21101615	TOPSOIL FURNISH AND PLACE, 4"	SQ YD	142	142	
25200110	SODDING, SALT TOLERANT	SQ YD	142	142	
28000510	INLET FILTERS	EACH	10	10	
31101400	SUBBASE GRANULAR MATERIAL, TYPE B 6"	SQ YD	5086	5086	
40600275	BITUMINOUS MATERIALS (PRIME COAT)	POUND	11443	11443	
40600290	BITUMINOUS MATERIALS (TACK COAT)	POUND	1144	1144	
40603085	HOT-MIX ASPHALT BINDER COURSE, IL-19.0, N70	TON	854	854	
40604062	HOT-MIX ASPHALT SURFACE COURSE, IL-9.5, MIX "D", N70	TON	427	427	
42001300	PROTECTIVE COAT	SQ YD	234	234	
42000300	PORTLAND CEMENT CONCRETE PAVEMENT 8"	SQ YD	84	84	
42300400	PORTLAND CEMENT CONCRETE DRIVEWAY PAVEMENT, 8 INCH	SQ YD	418	418	
42400200	PORTLAND CEMENT CONCRETE SIDEWALK 5 INCH	SQ FT	234	234	
44000100	PAVEMENT REMOVAL	SQ YD	5598	5598	
44000300	CURB REMOVAL	FOOT	113	113	
44000500	COMBINATION CURB AND GUTTER REMOVAL	FOOT	114	114	
44000600	SIDEWALK REMOVAL	SQ FT	149	149	
Ø 20076604	TRAINEES - TRAINING PROGRAM GRADUATE	HOURS	500	500	

* SPECIALTY ITEM



USER NAME = trgo	DESIGNED -	REVISED -
PLOT SCALE = 2.0000' / 1"	DRAWN -	REVISED -
PLOT DATE = 12/13/2021	CHECKED -	REVISED -
	DATE -	REVISED -

**STATE OF ILLINOIS
DEPARTMENT OF TRANSPORTATION**

**KENNEDY MAINTENANCE YARD
SCHEDULE OF QUANTITIES**

SCALE: N/A SHEET NO. 1 OF 5 SHEETS STA. TO STA.

F.A.U. RTE.	SECTION	COUNTY	TOTAL SHEETS	SHEET NO.
2798	2021-144-I	COOK	14	3
FED. ROAD DIST. NO. 1 [ILLINOIS] FED. AID PROJECT			CONTRACT NO. 62P60	

Ø0042

PAYCODE	ITEM DESCRIPTION	UNIT	TOTAL QUANTITIES	CONST. TYPE CODE	
				URBAN	
				100% STATE	
60250200	CATCH BASINS TO BE ADJUSTED	EACH	3	3	
60300305	FRAMES AND LIDS TO BE ADJUSTED	EACH	3	3	
60404300	FRAMES AND GRATES, TYPE 3	EACH	1	1	
60600605	CONCRETE CURB, TYPE B	FOOT	113	113	
60605000	COMBINATION CONCRETE CURB AND GUTTER, TYPE B-6.24	FOOT	165	165	
* 66900200	NON-SPECIAL WASTE DISPOSAL	CU YD	1240	1240	
* 66900530	SOIL DISPOSAL ANALYSIS	EACH	2	2	
* 66901001	REGULATED SUBSTANCES PRE-CONSTRUCTION PLAN	L SUM	1	1	
* 66901003	REGULATED SUBSTANCES FINAL CONSTRUCTION REPORT	L SUM	1	1	
* 66901006	REGULATED SUBSTANCES MONITORING	CAL DA	10	10	
67100100	MOBILIZATION	L SUM	1	1	
70102620	TRAFFIC CONTROL AND PROTECTION, STANDARD 701501	L SUM	1	1	
70102640	TRAFFIC CONTROL AND PROTECTION, STANDARD 701801	L SUM	1	1	
* 78000200	THERMOPLASTIC PAVEMENT MARKING - LINE 4"	FOOT	853	853	
X4240800	DETECTABLE WARNINGS (SPECIAL)	SQ FT	24	24	
X5537600	STORM SEWERS TO BE CLEANED 8"	FOOT	75	75	
X5537800	STORM SEWERS TO BE CLEANED 12"	FOOT	90	90	

* SPECIALTY ITEM

FILE NAME = P:\2019\ME19003_Var\Var_PHI\W037_Maintenance Yard Parking Lot\01-CADD\62P60_Kennedy Yard\02-Shts\03-D162P60-sht-S00.dgn
 PLOT SCALE = 2.0000' / 1" = 20000
 USER NAME = trngo



USER NAME = trngo
 DESIGNED -
 DRAWN -
 PLOT SCALE = 2.0000' / 1"
 PLOT DATE = 12/13/2021

DESIGNED -
 DRAWN -
 CHECKED -
 DATE -

REVISED -
 REVISED -
 REVISED -
 REVISED -

**STATE OF ILLINOIS
 DEPARTMENT OF TRANSPORTATION**

**KENNEDY MAINTENANCE YARD
 SCHEDULE OF QUANTITIES**

SCALE: N/A SHEET NO. 2 OF 5 SHEETS STA. TO STA.

F.A.U. RTE.	SECTION	COUNTY	TOTAL SHEETS	SHEET NO.
2798	2021-144-I	COOK	14	4
FED. ROAD DIST. NO. 1 [ILLINOIS] FED. AID PROJECT			CONTRACT NO. 62P60	

P:\2019\ME19003_Var\Var_PHI\W037_Maintenance Yard Parking Lot\01-CADD\62P60_Kennedy Yard\02-Shts\03-D162P60-sht-S00.dgn

PAYCODE	ITEM DESCRIPTION	UNIT	TOTAL QUANTITIES	CONST. TYPE CODE	
				URBAN	
				100% STATE	0005
X6700407	ENGINEER'S FIELD OFFICE, TYPE A (D1)	CAL MO	6	6	
X6030205	FRAMES AND GRATES TO BE ADJUSTED (SPECIAL)	EACH	1	1	
X0320050	CONSTRUCTION LAYOUT (SPECIAL)	L SUM	1	1	
Z0018500	DRAINAGE STRUCTURES TO BE CLEANED	EACH	11	11	

• SPECIALTY ITEM

FILE NAME = P:\2019\ME19003_Ver_Ver_P\1\W037_Maintenance Yard Parking Lot\01-CADD\62P60_Kennedy Yard\02-Sh1s\03-D162P60-sht-S00.dgn
 PLOT SCALE = 2.0000' / 1" =
 USER NAME = jpham



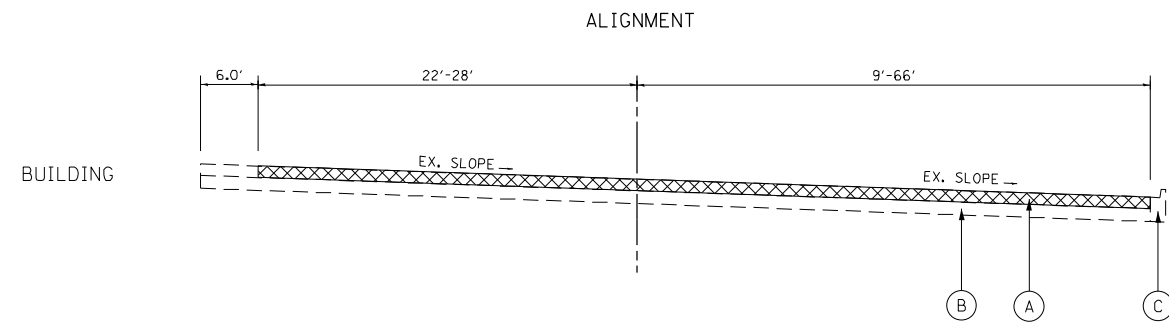
USER NAME = jpham	DESIGNED -	REVISED -
	DRAWN -	REVISED -
PLOT SCALE = 2.0000' / in.	CHECKED -	REVISED -
PLOT DATE = 12/14/2021	DATE -	REVISED -

**STATE OF ILLINOIS
DEPARTMENT OF TRANSPORTATION**

**KENNEDY MAINTENANCE YARD
SCHEDULE OF QUANTITIES**

F.A.U. RTE.	SECTION	COUNTY	TOTAL SHEETS	SHEET NO.
2798	2021-144-I	COOK	14	5
CONTRACT NO. 62P60				
FED. ROAD DIST. NO. 1 ILLINOIS FED. AID PROJECT				

SCALE: N/A SHEET NO. 3 OF 5 SHEETS STA. TO STA.



**EXISTING TYPICAL SECTION
MAINTENANCE YARD**

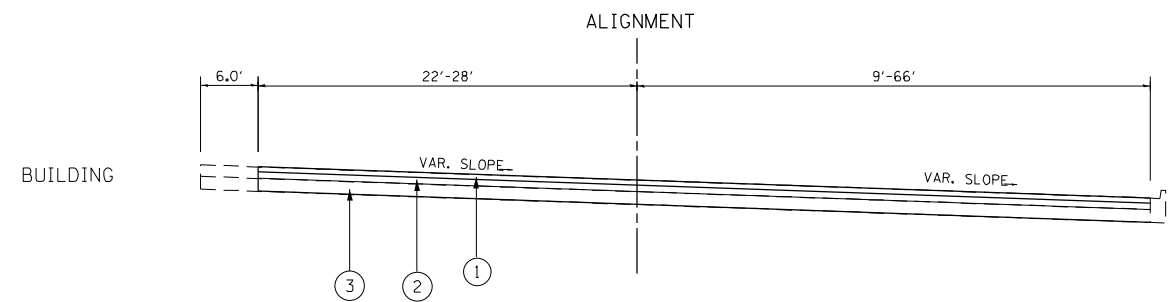
STA. 1+57.7 TO STA. 6+42.5

EXISTING LEGEND REMOVAL

- (A) HMA SURFACE REMOVAL 4 1/2"
- (B) EXISTING SUB-BASE
- (C) EXISTING CURB AND GUTTER, B.6-24

PROPOSED LEGEND

- (1) HOT-MIX ASPHALT SURFACE COURSE, MIX "D", IL-9.5, N70, 1 1/2"
- (2) HOT-MIX ASPHALT BINDER COURSE, IL-19.0, N70, 3"
- (3) SUBBASE GRANULAR MATERIAL, TYPE B 6"



**PROPOSED TYPICAL SECTION
MAINTENANCE YARD**

STA. 1+57.7 TO STA. 6+42.5

HOT MIX ASPHALT MIXTURE REQUIREMENTS		
MIXTURE TYPE	AIR VOIDS @ Ndes	QMP TYPE
PAVEMENT RECONSTRUCTION		
HOT-MIX ASPHALT SURFACE COURSE, MIX "D", IL-9.5, N70, 1 1/2"	4% @ 70 GYR.	QC/OA
HOT-MIX ASPHALT BINDER COURSE, IL-19.0, N70, 3"	4% @ 70 GYR.	QC/OA
QUALITY CONTROL FOR PERFORMANCE (QCP); PAY FOR PERFORMANCE (PFP) QMP DESIGNATION: QUALITY CONTROL /QUALITY ASSURANCE (QC/QA);		

MIXTURE NOTES:

1. THE UNIT WEIGHT USED TO CALCULATE ALL HOT-MIX ASPHALT SURFACE MIXTURES IS 112 LBS/SO YD/IN
2. THE "AC TYPE" FOR POLYMERIZED HMA MIXES SHALL BE "SBS/SBR PG 76-22" AND FOR NON-POLYMERIZED HMA THE "AC TYPE" SHALL BE "PG 64-22" UNLESS MODIFIED BY RECLAIMED MATERIALS SPECIFICATIONS.

FILE NAME = P:\2019\ME19003_Ver-Var-PH1\W037_Maintenance Yard Parking Lot\01-CADD\62P60_Kennedy Yard\02-Shts\06-D162P60-sht-typical.dgn
PLOT SCALE = 20.0000' / 1" = 2000000
USER NAME = mkoehler



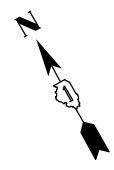
USER NAME = mkoehler	DESIGNED - -	REVISED -
	DRAWN - -	REVISED -
PLOT SCALE = 20.0000' / 1"	CHECKED - -	REVISED -
PLOT DATE = 1/11/2022	DATE - -	REVISED -

**STATE OF ILLINOIS
DEPARTMENT OF TRANSPORTATION**

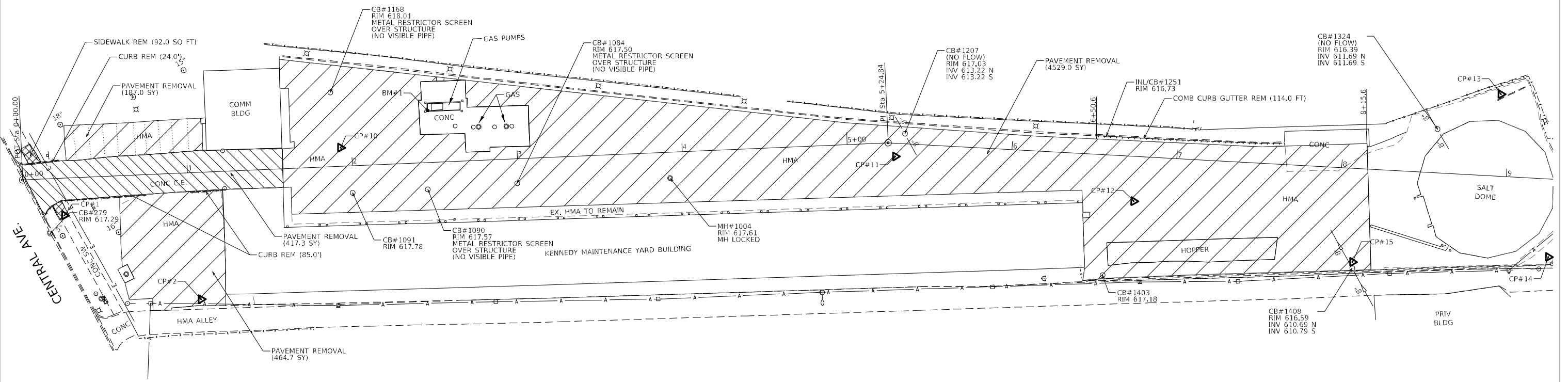
**KENNEDY MAINTENANCE YARD
TYPICAL SECTIONS**

SCALE: -	SHEET NO. - OF - SHEETS	STA. - TO STA. -	F.A.U. RTE. 2798	SECTION 2021-144-I	COUNTY COOK	TOTAL SHEETS 14	SHEET NO. 6
			FED. ROAD DIST. NO. 1 ILLINOIS FED. AID PROJECT				
			CONTRACT NO. 62P60				

P:\2019\ME19003_Ver-Var-PH1\W037_Maintenance Yard Parking Lot\01-CADD\62P60_Kennedy Yard\02-Shts\06-D162P60-sht-typical.dgn



POINT NO.	NORTHING	EASTING	ELEVATION
CP#1	1933137.4980	1137872.8310	618.13
CP#2	1933052.5581	1137919.7775	618.98
CP#10	1933090.6998	1138038.5701	618.03
CP#11	1932920.2573	1138328.2855	617.28
CP#13	1932771.9681	1138666.0368	616.74
CP#14	1932672.0523	1138642.2742	616.10
CP#15	1932728.0216	1138537.6353	616.62
BM#1			618.72



LEGEND	
	PAVEMENT REMOVAL (HMA)
	PAVEMENT REMOVAL (PCC)
	SIDEWALK REMOVAL

FILE NAME = P:\2019\ME19003_Ver-Var-PH1\W037_Maintenance Yard Parking Lot\01-CADD\62P60_Kennedy Yard\02-Shts\07-D162P60-sht-Existing Site & Rem.dgn
 PLOT SCALE = 60.0000' / in.
 USER NAME = jpham



USER NAME = jpham	DESIGNED -	REVISED -
	DRAWN -	REVISED -
PLOT SCALE = 60.0000' / in.	CHECKED -	REVISED -
PLOT DATE = 12/14/2021	DATE -	REVISED -

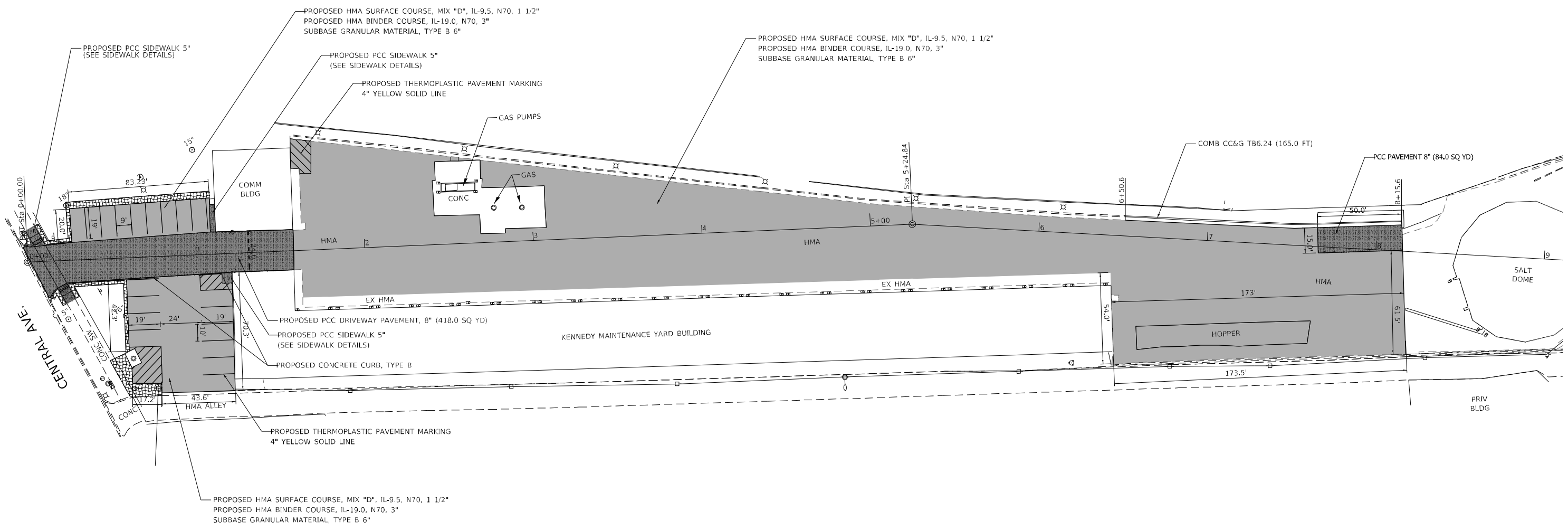
**STATE OF ILLINOIS
DEPARTMENT OF TRANSPORTATION**

**KENNEDY MAINTENANCE YARD
EXISTING SITE AND REMOVAL PLAN**


SCALE: 1"=30' SHEET NO. OF SHEETS STA. TO STA.

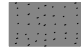
F.A.U. RTE.	SECTION	COUNTY	TOTAL SHEETS	SHEET NO.
2798	2021-144-I	COOK	14	7
CONTRACT NO. 62P60				
FED. ROAD DIST. NO. 1 ILLINOIS FED. AID PROJECT				

P:\2019\ME19003_Ver-Var-PH1\W037_Maintenance Yard Parking Lot\01-CADD\62P60_Kennedy Yard\02-Shts\07-D162P60-sht-Existing Site & Rem.dgn



LEGEND

 HOT-MIX ASPHALT

 PORTLAND CEMENT CONCRETE

FILE NAME = P:\2019\ME19003\Var\Var-PHI\W037\Maintenance Yard Parking Lot\CADD\62P60_Kennedy Yard\02-Shts\08-D162P60-sht-Pr Site & Pmnt Mk.dgn
 PLOT SCALE = 60.0000' / in.
 USER NAME = jpham



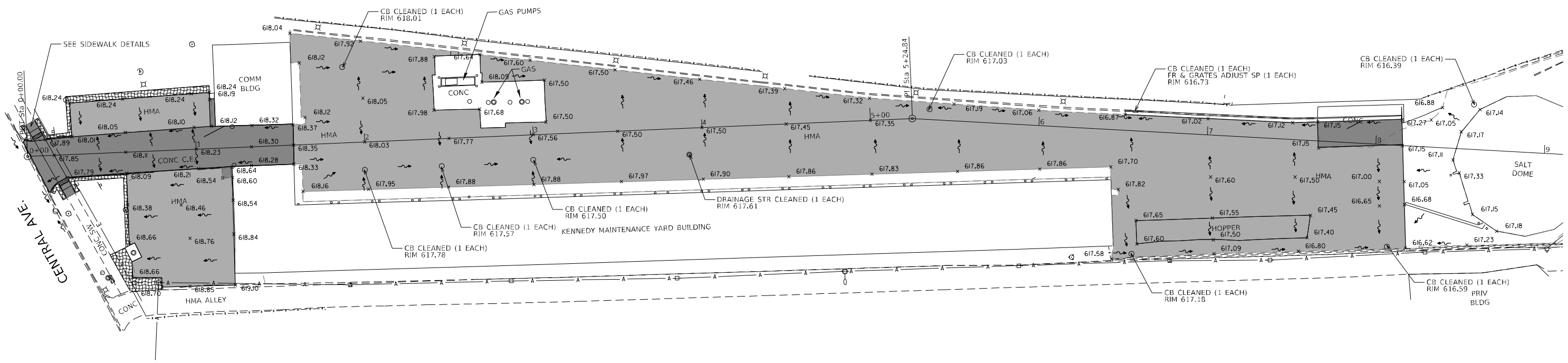
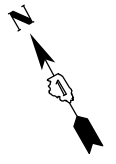
USER NAME = jpham	DESIGNED -	REVISED -
PLOT SCALE = 60.0000' / in.	DRAWN -	REVISED -
PLOT DATE = 12/14/2021	CHECKED -	REVISED -
	DATE -	REVISED -



**STATE OF ILLINOIS
 DEPARTMENT OF TRANSPORTATION**

**KENNEDY MAINTENANCE YARD
 PROPOSED SITE AND PAVEMENT MARKING PLAN**

SCALE: 1"=30'	SHEET NO. OF SHEETS STA. TO STA.	F.A.U. RTE. 2798	SECTION 2021-144-I	COUNTY COOK	TOTAL SHEETS 14	SHEET NO. 8
		FED. ROAD DIST. NO. 1 ILLINOIS FED. AID PROJECT				
		CONTRACT NO. 62P60				

P:\2019\ME19003\Var\Var-PHI\W037\Maintenance Yard Parking Lot\CADD\62P60_Kennedy Yard\02-Shts\08-D162P60-sht-Pr Site & Pmnt Mk.dgn



LEGEND	
	HOT-MIX ASPHALT
	PORTLAND CEMENT CONCRETE

FILE NAME = P:\2019\ME19003.Var\Var-PH1\W037.Maintenance Yard Parking Lot\01-CADD\62P60-Kennedy Yard\02-Shts\09-D162P60-sht-Grading & Drainage Plan.dgn
 PLOT SCALE = 60.0000' / in.
 USER NAME = tngo



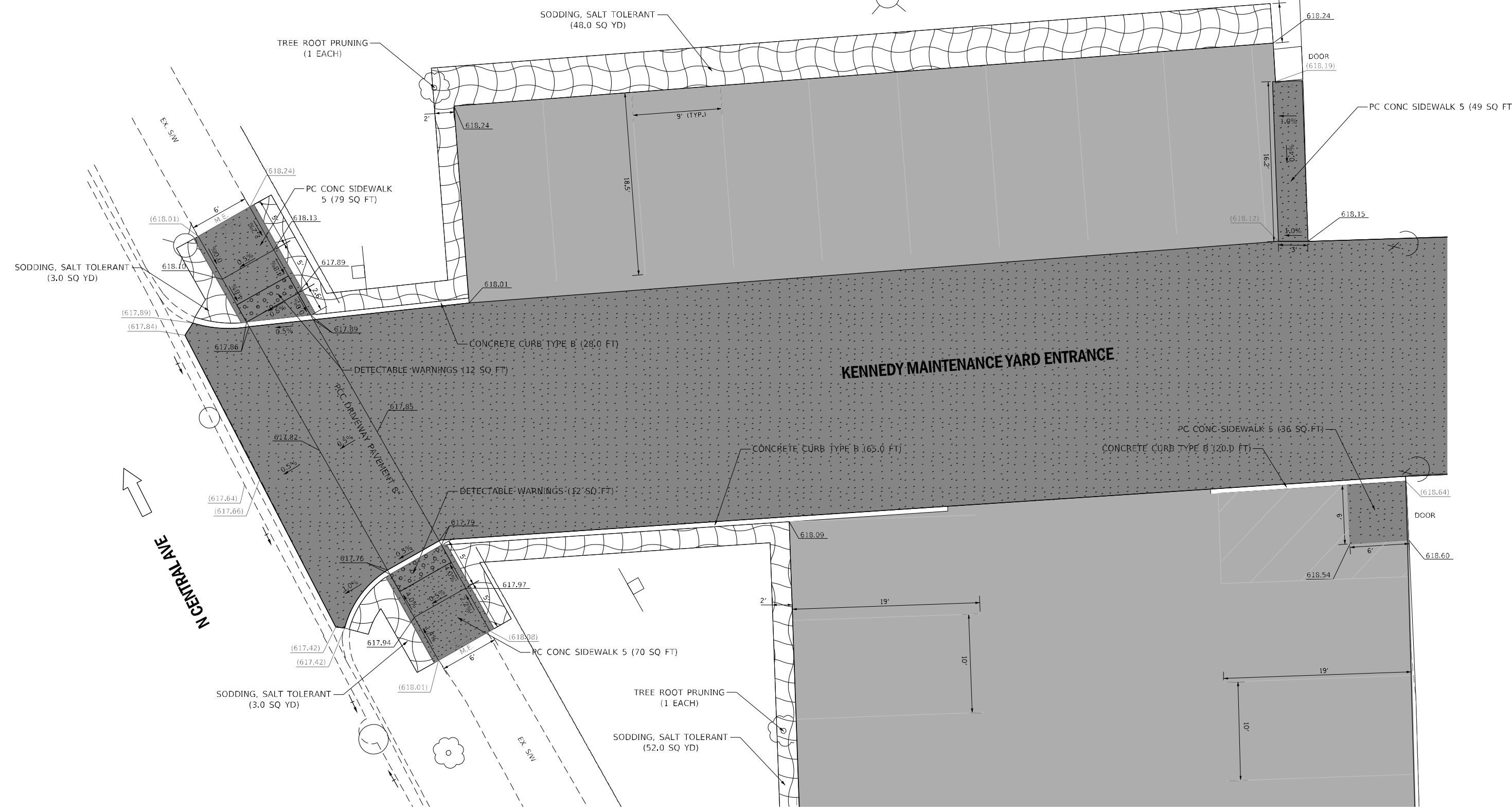
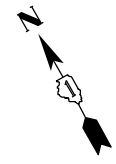
USER NAME = tngo	DESIGNED -	REVISED -
	DRAWN -	REVISED -
PLOT SCALE = 60.0000' / in.	CHECKED -	REVISED -
PLOT DATE = 12/11/2021	DATE -	REVISED -

**STATE OF ILLINOIS
DEPARTMENT OF TRANSPORTATION**

**KENNEDY MAINTENANCE YARD
GRADING AND DRAINAGE PLAN**

SCALE: 1"=30'	SHEET NO. OF SHEETS	STA. TO STA.	F.A.U. RTE. 2798	SECTION 2021-144-I	COUNTY COOK	TOTAL SHEETS 14	SHEET NO. 9
			FED. ROAD DIST. NO. 1 ILLINOIS FED. AID PROJECT				
			CONTRACT NO. 62P60				

P:\2019\ME19003.Var\Var-PH1\W037.Maintenance Yard Parking Lot\01-CADD\62P60-Kennedy Yard\02-Shts\09-D162P60-sht-Grading & Drainage Plan.dgn



FILE NAME = P:\2019\ME19003.Var\Var_PHI\W037.Maintenance Yard Parking Lot\01-CADD\62P60.Kennedy Yard\02-Shts\10-D162P60-shr-ADA_Details.dgn
 PLOT SCALE = 10.0000' / in.
 USER NAME = trngo



USER NAME = trngo	DESIGNED - -	REVISED -
DRAWN - -	REVISIED -	
PLOT SCALE = 10.0000' / in.	CHECKED - -	REVISED -
PLOT DATE = 12/11/2021	DATE - -	REVISED -

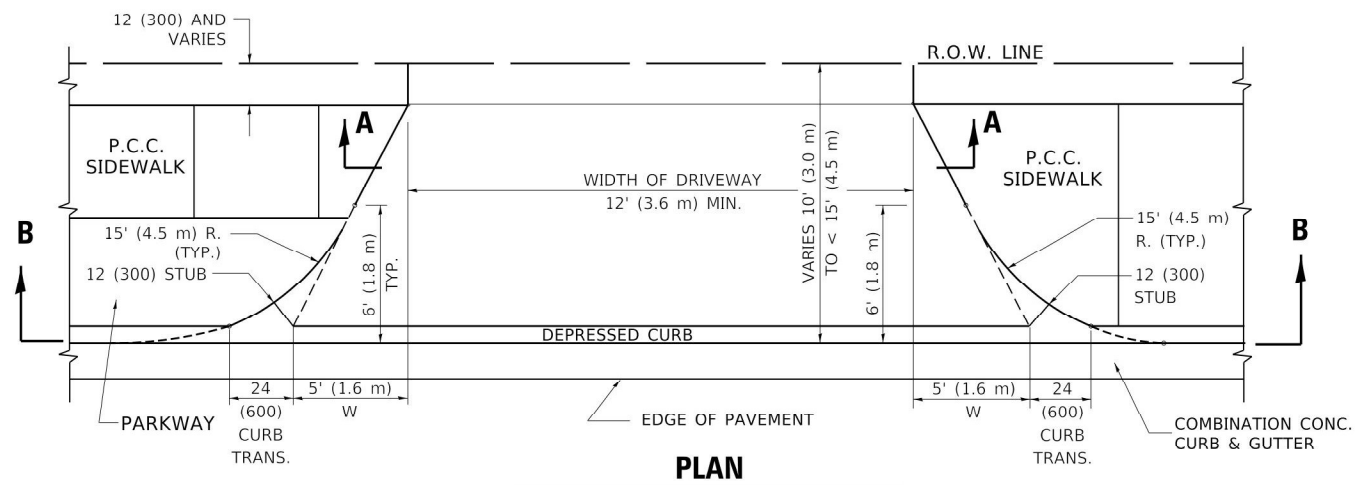
**STATE OF ILLINOIS
DEPARTMENT OF TRANSPORTATION**

**KENNEDY MAINTENANCE YARD
SIDEWALK DETAILS**

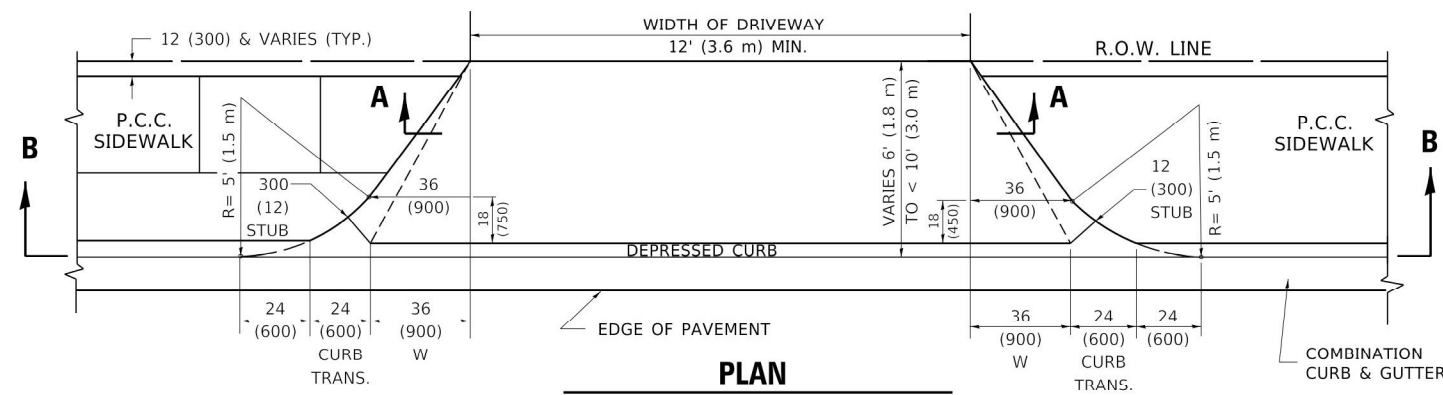
SCALE: 1"=5' SHEET NO. OF SHEETS STA. TO STA.

F.A.U. RTE.	SECTION	COUNTY	TOTAL SHEETS	SHEET NO.
2798	2021-144-I	COOK	14	10
CONTRACT NO. 62P60				
FED. ROAD DIST. NO. 1 ILLINOIS FED. AID PROJECT				

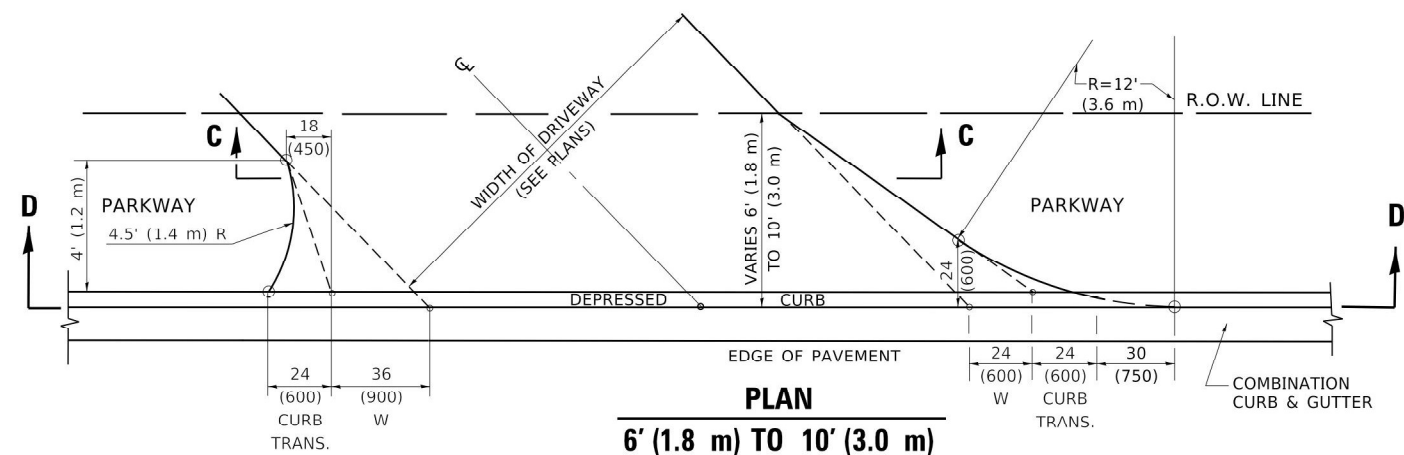
P:\2019\ME19003.Var\Var_PHI\W037.Maintenance Yard Parking Lot\01-CADD\62P60.Kennedy Yard\02-Shts\10-D162P60-shr-ADA_Details.dgn



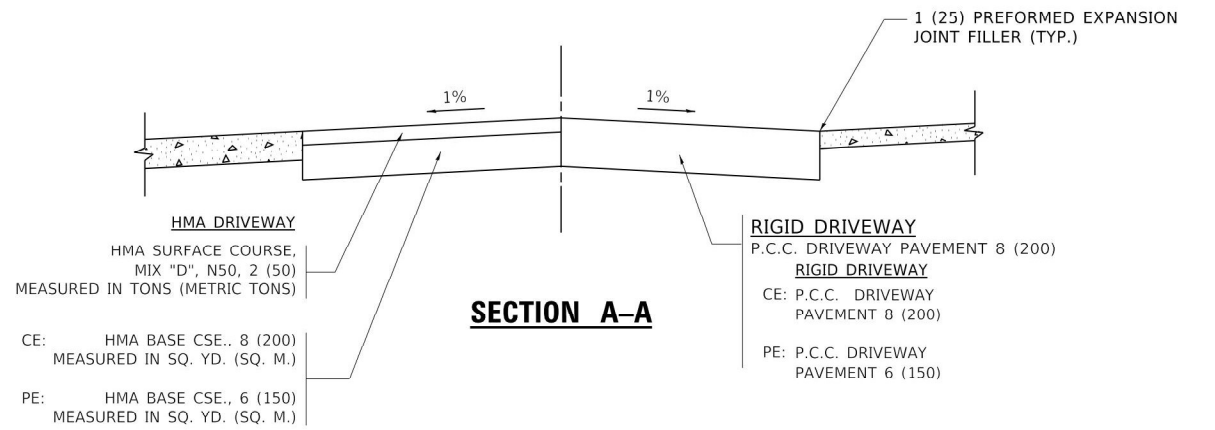
PLAN
10' (3.0 m) TO < 15' (4.5 m)



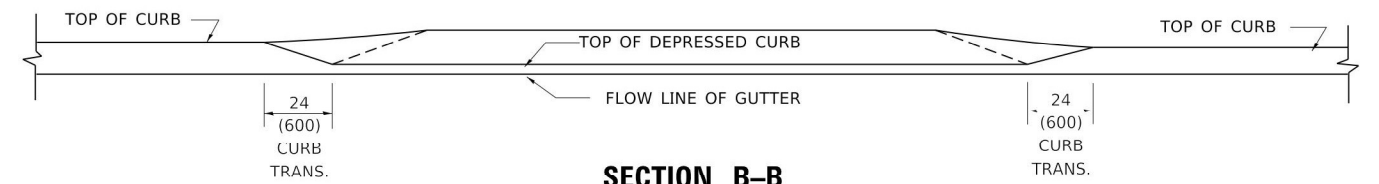
PLAN
6' (1.8 m) TO < 10' (3.0 m)



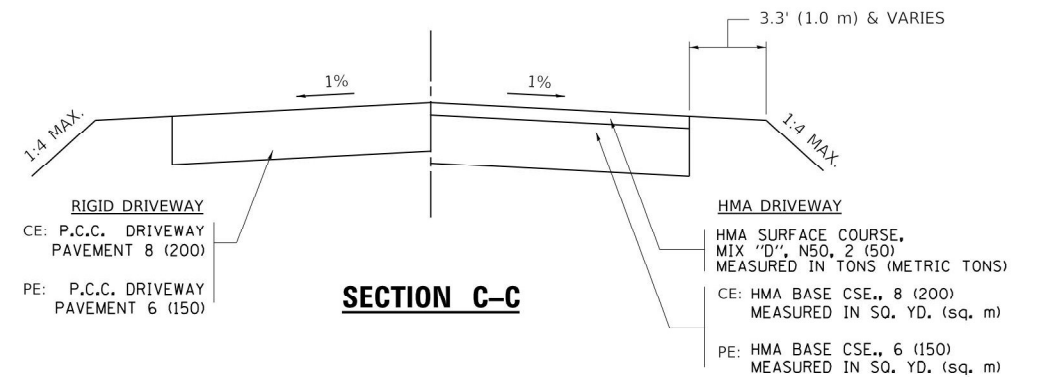
PLAN
6' (1.8 m) TO 10' (3.0 m)



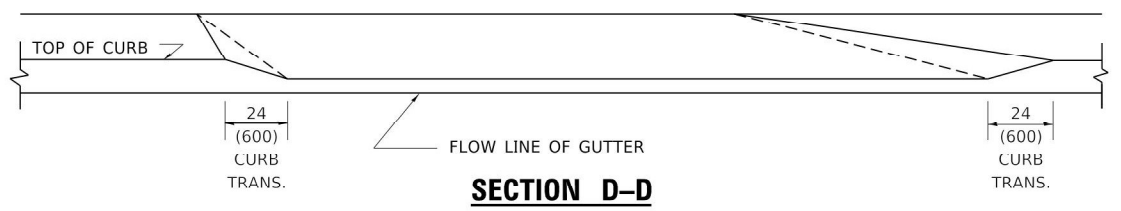
SECTION A-A



SECTION B-B



SECTION C-C



SECTION D-D

GENERAL NOTES

DRIVEWAY SLOPES, LOCATIONS, & GEOMETRIC LAYOUT SHALL BE IN ACCORDANCE WITH THE LATEST EDITION OF THE "HANDBOOK FOR POLICY ON PERMITS FOR ACCESS DRIVEWAYS TO STATE HIGHWAYS". FOR FURTHER LAYOUT REQUIREMENTS, REFER TO ILLUSTRATION 10 IN THE PERMIT HANDBOOK. WHERE SIDEWALKS EXIST, DRIVEWAYS SHALL BE REPLACED WITH RIGID PAVEMENT. WHERE NO SIDEWALKS EXIST, DRIVEWAYS SHALL BE REPLACED IN KIND. SIDEWALK CROSS SLOPE THRU DRIVEWAY AREA TO BE A MAXIMUM OF 1:50.

WHEN THE DISTANCE BETWEEN R.O.W. AND THE BACK OF CURB IS EQUAL TO OR LESS THAN 8' (2.4 m), THE P.C.C. SIDEWALK SHALL EXTEND TO THE BACK OF CURB.

THE RESIDENT ENGINEER SHALL CONTACT THE TRAFFIC PERMIT OFFICE AT 847/ 705-4131 FOR ANY QUESTIONS ON DRIVEWAYS SHOWN IN THE PLANS; SPECIFICALLY IN REFERENCE TO ADDITIONAL AND/OR RELOCATION/REMOVAL OF A DRIVEWAY.

COMBINATION CONCRETE CURB & GUTTER SHALL BE MEASURED STRAIGHT ACROSS THE DRIVEWAY. NO ADDITIONAL COMPENSATION WILL BE ALLOWED FOR THE CURB & GUTTER TRANSITION.

THE 1 (25) PREFORMED EXPANSION JOINT FILLER WILL NOT BE PAID SEPARATELY, BUT SHALL BE CONSIDERED INCLUDED IN THE COST OF THE P.C.C. DRIVEWAY PAVEMENT OR P.C.C. SIDEWALK.

"W" VARIES FROM 36 (900) TO 5' (1.5 m) PROPORTIONAL TO THE LENGTH (L), FROM 6' (1.8 m) TO 10' (3 m).

ALL DIMENSIONS ARE IN INCHES (MILLIMETERS) UNLESS OTHERWISE NOTED.

**STATE OF ILLINOIS
DEPARTMENT OF TRANSPORTATION**

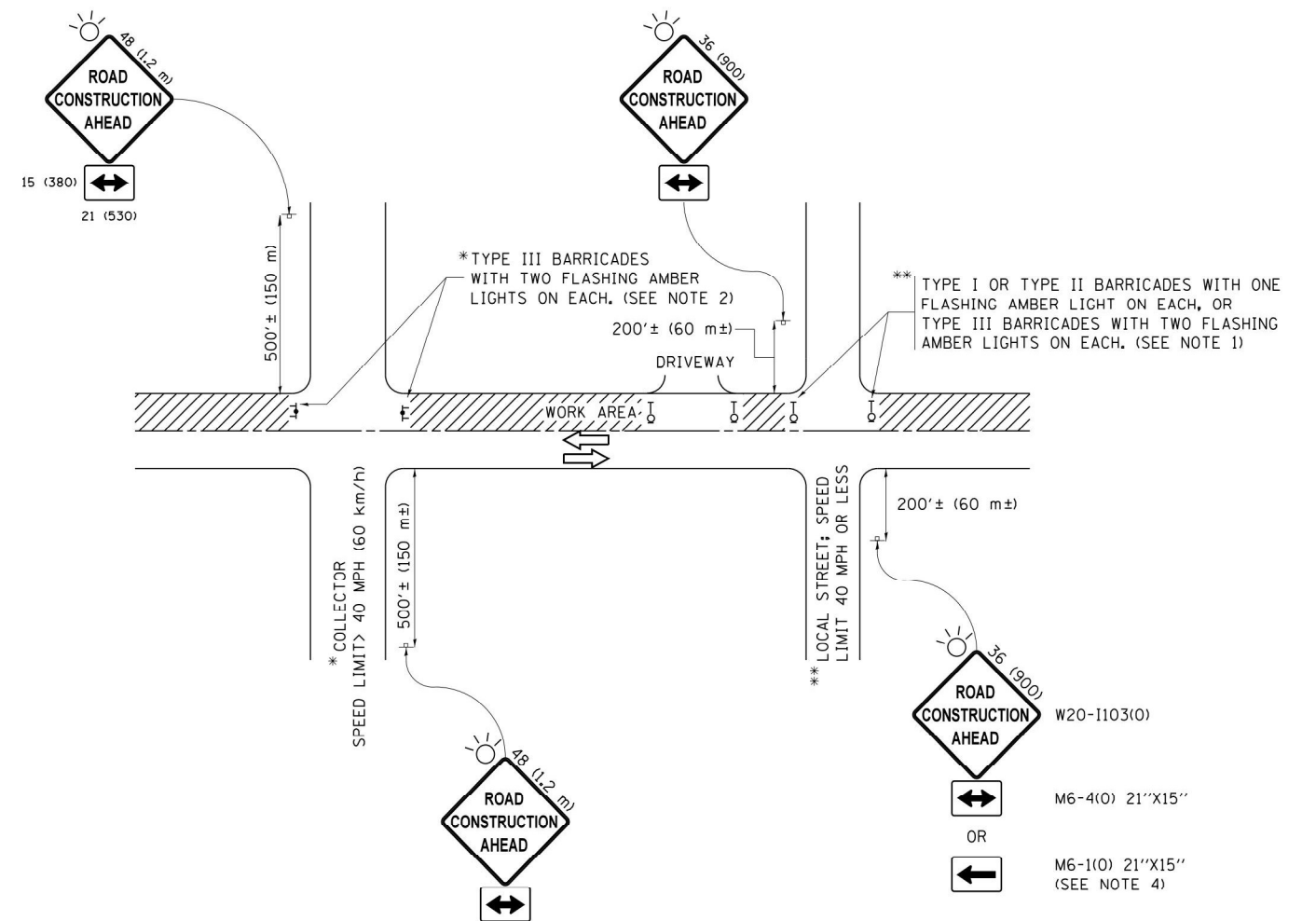
**DRIVEWAY DETAILS
DISTANCE BETWEEN ROW AND FACE OF CURB < 15' (4.5m)**

SCALE: NONE SHEET 1 OF 1 SHEETS STA. TO STA.

F.A.U. RTE.	SECTION	COUNTY	TOTAL SHEETS	SHEET NO.
2798	2021-144-I	COOK	14	11
BD400-02 (BD-02)			CONTRACT NO. 62P60	

ILLINOIS FED. AID PROJECT

USER NAME = footemj	DESIGNED - R. SHAH	REVISED - M. GOMEZ 04-06-01
PLOT SCALE = 50.0000" / in.	DRAWN -	REVISED - P. LOFLUER 04-15-03
PLOT DATE = 3/27/2019	CHECKED -	REVISED - R. BORO 01-01-07
	DATE - 11-06-95	REVISED - R. BORO 09-06-11



NOTES:

1. SIDE ROAD WITH A SPEED LIMIT OF 40 MPH (60 km/h) OR LESS AS SHOWN ON THE DRAWING AND AS DIRECTED BY THE ENGINEER:
 - a) ONE "ROAD CONSTRUCTION AHEAD" SIGN 36 x 36 (900x900) WITH A FLASHER MOUNTED ON IT APPROXIMATELY 200' (60 m) IN ADVANCE OF THE MAIN ROUTE.
 - b) THE CLOSED PORTION OF THE MAIN ROUTE SHALL BE PROTECTED BY BLOCKING WITH TYPE I, TYPE II OR TYPE III BARRICADES, 1/3 OF THE CROSS SECTION OF THE CLOSED PORTION.
2. SIDE ROAD WITH A SPEED LIMIT GREATER THAN 40 MPH (60 km/h) AS SHOWN ON THE DRAWING AND AS DIRECTED BY THE ENGINEER:
 - a) ONE "ROAD CONSTRUCTION AHEAD" SIGN 48 x 48 (1.2 m x 1.2 m) WITH A FLASHER MOUNTED ON IT APPROXIMATELY 500' (150 m) IN ADVANCE OF THE MAIN ROUTE.
 - b) THE CLOSED PORTION OF THE MAIN ROUTE SHALL BE PROTECTED BY BLOCKING WITH TYPE III BARRICADES, 1/2 OF THE CROSS SECTION OF THE CLOSED PORTION.
3. CONES MAY BE SUBSTITUTED FOR BARRICADES OR DRUMS AT HALF THE SPACING DURING DAY OPERATIONS. CONES SHALL BE A MINIMUM OF 28 (710) IN HEIGHT.
4. WHEN THE SIDE ROAD LIES BETWEEN THE BEGINNING OF THE MAINLINE SIGNING AND THE WORK ZONE, A SINGLE HEADED ARROW (M6-1) SHALL BE USED IN LIEU OF THE DOUBLE HEADED ARROW (M6-4).
5. WHEN WORK IS BEING PERFORMED ON A SIDE ROAD OR DRIVEWAY, FOLLOW THE APPLICABLE STANDARD(S). THE DIRECTIONAL ARROW (M6-1 OR M6-4) SHALL BE COVERED OR REMOVED WHEN NO LONGER CONSISTENT WITH THE TRAFFIC CONTROL SET-UP.
6. ADVANCE WARNING SIGNS ARE TO BE OMITTED ON DRIVEWAYS UNLESS OTHERWISE SPECIFIED IN THE PLANS OR BY THE ENGINEER.
7. THE TRAFFIC CONTROL AND PROTECTION FOR SIDE ROADS, INTERSECTIONS, AND DRIVEWAYS SHALL BE INCLUDED IN THE COST OF SPECIFIED TRAFFIC CONTROL STANDARDS OR ITEMS.

All dimensions are in inches (millimeters) unless otherwise shown.

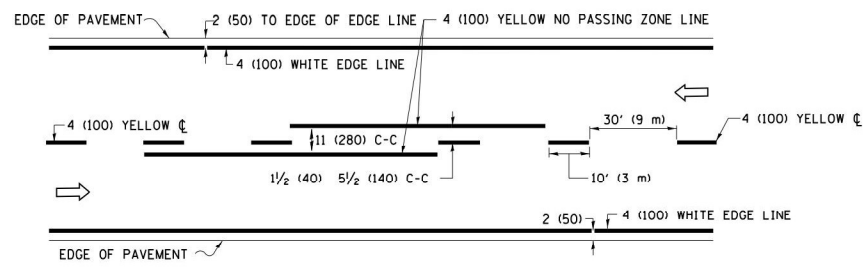
FILE NAME =	USER NAME = footemj	DESIGNED - L.H.A.	REVISED - A. HOUSEH 10-15-96
p:\1\084EBID\INTEG\illinois.gov\PIWIDOT\Documents\IDOT Offices\District 1\Projects\Dist		DRAWN\CADData\CADsheets\tc10.dgn	REVISED - T. RAMMACHER 01-06-00
Default	PLOT SCALE = 50.000' / in.	CHECKED -	REVISED - A. SCHUETZE 07-01-13
	PLOT DATE = 9/15/2016	DATE - 06-89	REVISED - A. SCHUETZE 09-15-16

**STATE OF ILLINOIS
DEPARTMENT OF TRANSPORTATION**

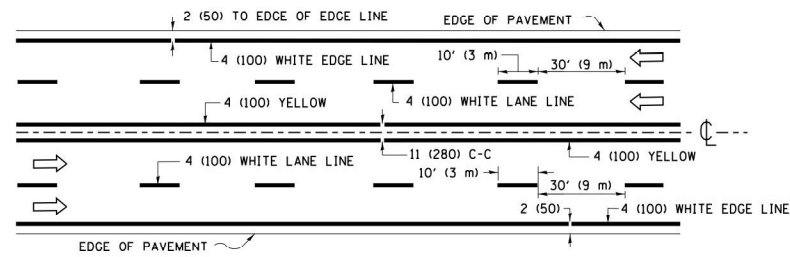
**TRAFFIC CONTROL AND PROTECTION FOR
SIDE ROADS, INTERSECTIONS, AND DRIVEWAYS**

SCALE: NONE SHEET 1 OF 1 SHEETS STA. TO STA.

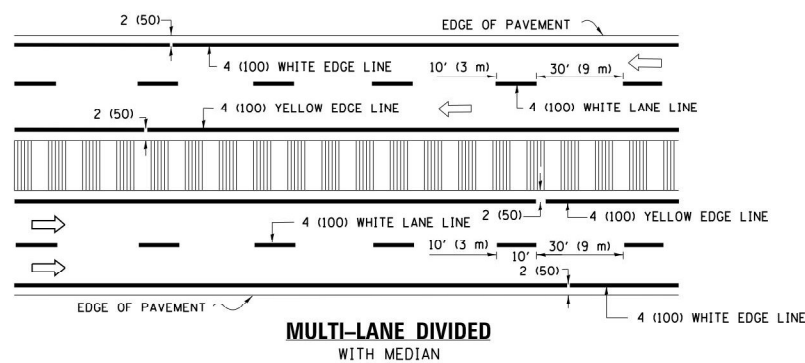
F.A.U. RTE.	SECTION	COUNTY	TOTAL SHEETS	SHEET NO.
2798	2021-144-1	COOK	14	13
TC-10		CONTRACT NO. 62P60		
ILLINOIS FED. AID PROJECT				



2-LANE ROADWAY

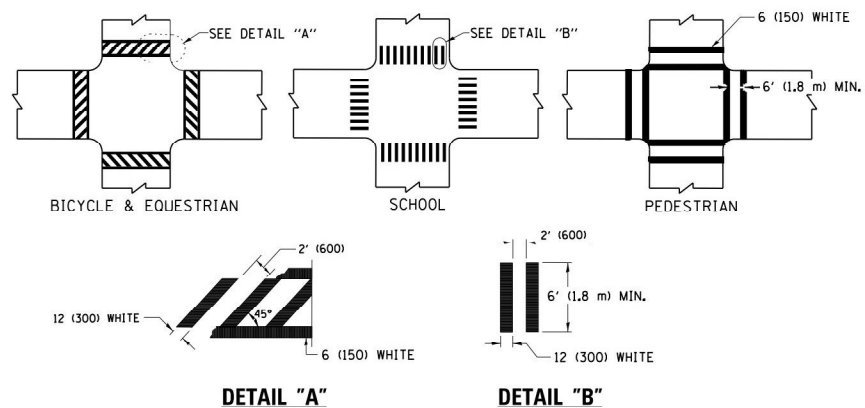


MULTI-LANE UNDIVIDED



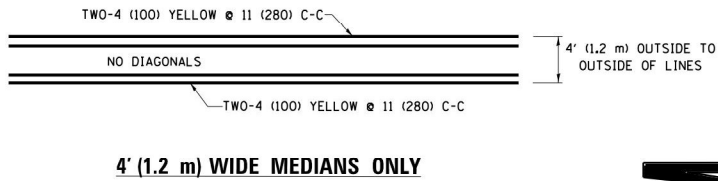
MULTI-LANE DIVIDED WITH MEDIAN

TYPICAL LANE AND EDGE LINE MARKING

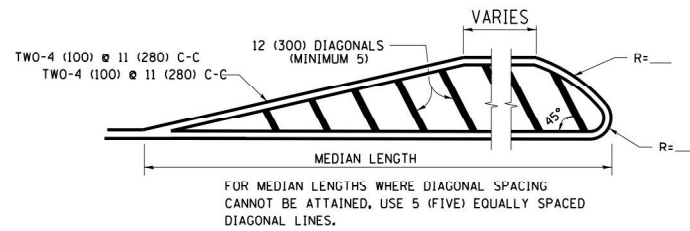


DETAIL "A"
 TYPICAL CROSSWALK MARKING

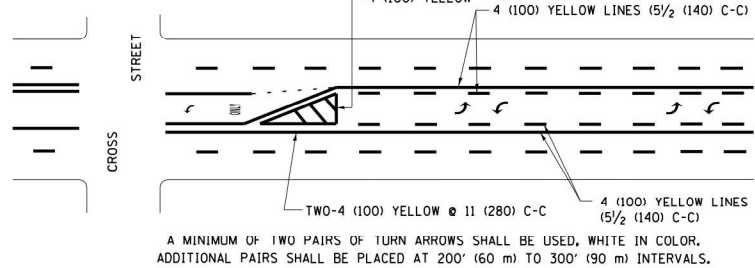
* MARKINGS SHALL BE INSTALLED PARALLEL TO THE CENTERLINE OF THE ROAD WHICH IT CROSSES



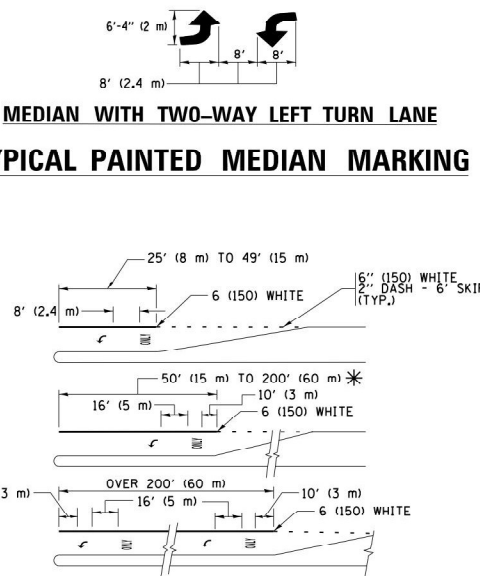
4' (1.2 m) WIDE MEDIANS ONLY



MEDIANS OVER 4' (1.2 m) WIDE

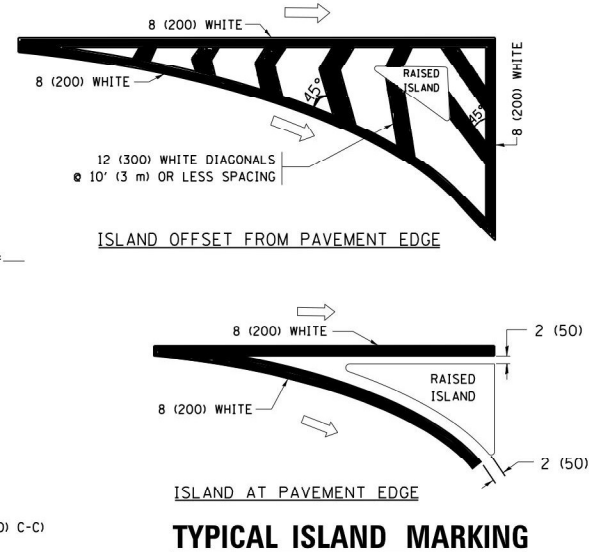


MEDIAN WITH TWO-WAY LEFT TURN LANE
 TYPICAL PAINTED MEDIAN MARKING



TYPICAL LEFT (OR RIGHT) TURN LANE
 TYPICAL TURN LANE MARKING

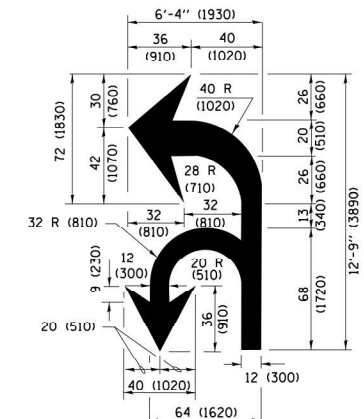
FULL SIZE LETTERS 8" (2.4 m) AND ARROWS SHALL BE USED.
 * TURN LANES IN EXCESS OF 400' (120 m) IN LENGTH MAY HAVE AN ADDITIONAL SET OF ARROW - "ONLY" INSTALLED MIDWAY BETWEEN THE OTHER TWO SETS OF ARROW - "ONLY".



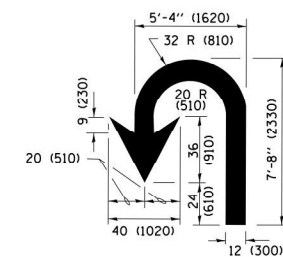
ISLAND OFFSET FROM PAVEMENT EDGE

ISLAND AT PAVEMENT EDGE

TYPICAL ISLAND MARKING



COMBINATION LEFT AND U-TURN



U-TURN

LANE REDUCTION TRANSITION

* LANE REDUCTION ARROWS REQUIRED AT SPEEDS OF 45 MPH OR GREATER OR WHEN SPECIFIED IN PLANS.

D(FT)	SPEED LIMIT
345	30
425	35
500	40
580	45
665	50
750	55

TYPE OF MARKING	WIDTH OF LINE	PATTERN	COLOR	SPACING /REMARKS
CENTERLINE ON 2 LANE PAVEMENT	4 (100)	SKIP DASH	YELLOW	10' (3 m) LINE WITH 30' (9 m) SPACE
CENTERLINE ON MULTI-LANE UNDIVIDED PAVEMENT	2 @ 4 (100)	SOLID	YELLOW	11 (280) C-C
NO PASSING ZONE LINES; FOR ONE DIRECTION FOR BOTH DIRECTIONS	4 (100) 2 @ 4 (100)	SOLID SOLID	YELLOW YELLOW	5 1/2 (140) C-C FROM SKIP-DASH CENTERLINE 11 (280) C-C OMIT SKIP-DASH CENTERLINE BETWEEN
LANE LINES	4 (100) 5 (125) ON FREEWAYS	SKIP-DASH SKIP-DASH	WHITE WHITE	10' (3 m) LINE WITH 30' (9 m) SPACE
DOTTED LINES (EXTENSIONS OF CENTER, LANE OR TURN LANE MARKINGS)	SAME AS LINE BEING EXTENDED	SKIP-DASH	SAME AS LINE BEING EXTENDED	2' (600) LINE WITH 6' (1.8 m) SPACE
EDGE LINES	4 (100)	SOLID	YELLOW-LEFT WHITE-RIGHT	OUTLINE MEDIANS IN YELLOW
TURN LANE MARKINGS	6 (150) LINE, FULL SIZE LETTERS & SYMBOLS (8' (2.4m))	SOLID	WHITE	SEE TYPICAL TURN LANE MARKING DETAIL
TWO WAY LEFT TURN MARKING	2 @ 4 (100) EACH DIRECTION 8' (2.4m) LEFT ARROW	SKIP-DASH AND SOLID IN PAIRS	YELLOW WHITE	10' (3 m) LINE WITH 30' (9 m) SPACE FOR SKIP-DASH; 5 1/2 (140) C-C BETWEEN SOLID LINE AND SKIP-DASH LINE SEE TYPICAL TWO-WAY LEFT TURN MARKING DETAIL
CROSSWALK LINES (PEDESTRIAN) A. DIAGONALS (BIKE & EQUESTRIAN) B. LONGITUDINAL BARS (SCHOOL)	2 @ 6 (150) 12 (300) @ 45° 12 (300) @ 90°	SOLID SOLID SOLID	WHITE WHITE WHITE	NOT LESS THAN 6' (1.8 m) APART 2' (600) APART SEE TYPICAL CROSSWALK MARKING DETAILS.
STOP LINES	24 (600)	SOLID	WHITE	PLACE 4' (1.2 m) IN ADVANCE OF AND PARALLEL TO CROSSWALK. IF PRESENT, OTHERWISE, PLACE AT DESIRED STOPPING POINT, PARALLEL TO CROSSROAD CENTERLINE, WHERE POSSIBLE.
PAINTED MEDIANS	2 @ 4 (100) WITH 12 (300) DIAGONALS @ 45° NO DIAGONALS USED FOR 4' (1.2 m) WIDE MEDIANS	SOLID	YELLOW; TWO WAY TRAFFIC WHITE; ONE WAY TRAFFIC	11 (280) C-C FOR THE DOUBLE LINE SEE TYPICAL PAINTED MEDIAN MARKING.
GORE MARKING AND CHANNELIZING LINES	8 (200) WITH 12 (300) DIAGONALS @ 45°	SOLID	WHITE	DIAGONALS: 15' (4.5 m) C-C (LESS THAN 30MPH (50 km/h)) 20' (6 m) C-C (30 MPH (50 km/h) TO 45MPH (70 km/h)) 30' (9 m) C-C (OVER 45MPH (70 km/h))
RAILROAD CROSSING	24 (600) TRANSVERSE LINES: "RR" IS 6' (1.8 m) LETTERS; 16 (400) LINE FOR "X"	SOLID	WHITE	SEE STATE STANDARD 780001 AREA OF: "R"=3.6 SQ. FT. (0.33 m²) EACH "X"=54.0 SQ. FT. (5.0 m²)
SHOULDER DIAGONALS (REQUIRED FOR SHOULDERS ≥ 8')	12 (300) @ 45°	SOLID	WHITE - RIGHT YELLOW - LEFT	50' (15 m) C-C (LESS THAN 30MPH (50 km/h)) 75' (25 m) C-C (30 MPH (50 km/h) TO 45MPH (70 km/h)) 150' (45 m) C-C (OVER 45MPH (70 km/h))
U TURN ARROW	SEE DETAIL	SOLID	WHITE	16.3 SF
2 ARROW COMBINATION LEFT AND U TURN	SEE DETAIL	SOLID	WHITE	30.4 SF

FOR FURTHER DETAILS ON PAVEMENT MARKING REFER TO STANDARD SPECIFICATIONS FOR ROAD AND BRIDGE CONSTRUCTION AND STATE STANDARD 780001.

All dimensions are in inches (millimeters) unless otherwise shown.

FILE NAME =	USER NAME = footemj	DESIGNED - EVERS	REVISED - C. JUCIUS 09-09-09
pw\1\084EBID\INTEG\11\inois.gov\PW1001\Documents\DOT Offices\District 1\Projects\Dist	DRAWN\CADData\CAD\shhets\tcl3.dgn	CHECKED -	REVISED - C. JUCIUS 07-01-13
Default	PLOT SCALE = 50.0000' / in.	DATE - 03-19-90	REVISED - C. JUCIUS 12-21-15
	PLOT DATE = 4/13/2016		REVISED - C. JUCIUS 04-12-16

STATE OF ILLINOIS
 DEPARTMENT OF TRANSPORTATION

DISTRICT ONE
 TYPICAL PAVEMENT MARKINGS

F.A.U RTE. 2798	SECTION 2021-144-1	COUNTY COOK	TOTAL SHEETS 14	SHEET NO. 14
TC-13			CONTRACT NO. 62P60	
ILLINOIS FED. AID PROJECT				

SCALE: NONE SHEET 1 OF 1 SHEETS STA. TO STA.