

STATE OF ILLINOIS
DEPARTMENT OF TRANSPORTATION

F.A.P. RTE.	SECTION	COUNTY	TOTAL SHEETS	SHEET NO.
17	(102BR)RS	OGLE	13	1
		ILLINOIS	CONTRACT NO. 64R33	

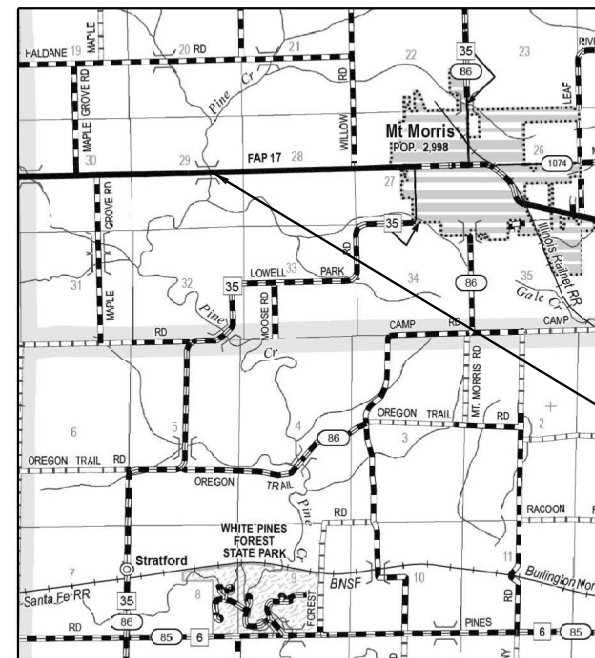
FOR INDEX OF SHEETS, SEE SHEET NO. 2

PROPOSED HIGHWAY PLANS

FAP 17A(IL 64)
SECTION (102BR)RS
PROJECT
BRIDGE APPROACH PAVEMENT REPAIR
OGLE COUNTY

C-92-006-22

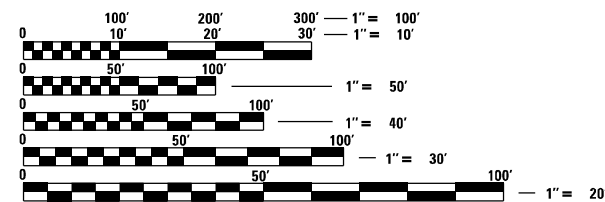
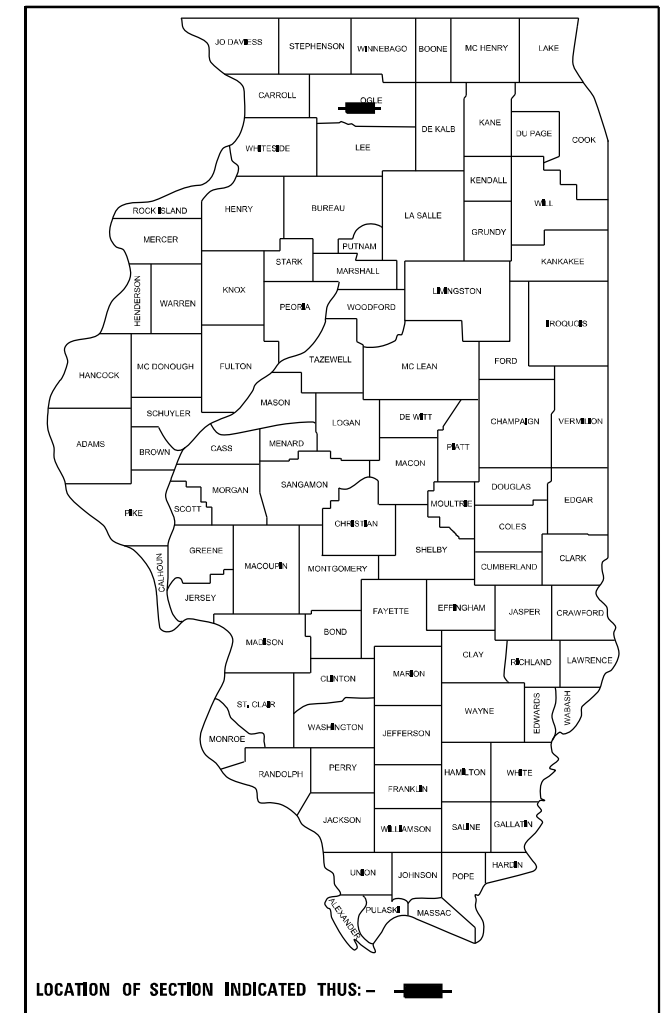
R 9 E



T 24 N

T 23 N

PROJECT LOCATION
SN 071-0015
OVER PINE CREEK



FULL SIZE PLANS HAVE BEEN PREPARED USING STANDARD ENGINEERING SCALES. REDUCED SIZED PLANS WILL NOT CONFORM TO STANDARD SCALES. IN MAKING MEASUREMENTS ON REDUCED PLANS, THE ABOVE SCALES MAY BE USED.

J.U.L.I.E.
JOINT UTILITY LOCATION INFORMATION FOR EXCAVATORS
1-800-892-0123
OR 811

PROJECT ENGINEER SCOTT WYATT, PE, SE
PROJECT MANAGER MAHMOUD ETEMADI, PE

CONTRACT NO. 64R33

GROSS LENGTH = x.xx FT. = x.xxx MILE
NET LENGTH = x.xx FT. = x.xxx MILE



Exp 11/30/2021
Michael G Buiting
For Maintenance of Traffic

STATE OF ILLINOIS
DEPARTMENT OF TRANSPORTATION

SUBMITTED December 06, 20 21
David Alford
REGIONAL ENGINEER

February 4, 20 22
[Signature]
ENGINEER OF DESIGN AND ENVIRONMENT

February 4, 20 22
Stephen M. Frank
DIRECTOR OF HIGHWAYS PROJECT IMPLEMENTATION

PRINTED BY THE AUTHORITY
OF THE STATE OF ILLINOIS

SHEET INDEX

1. COVER
2. GENERAL NOTES/ CONSTRUCTION SEQUENCE
3. SCHEDULE OF QUANTITIES
4. STAGING TYPICAL SECTION
5. MAINTENANCE OF TRAFFIC PLAN PRESTAGE PHASE 1
6. MAINTENANCE OF TRAFFIC PLAN PRESTAGE PHASE 2
7. MAINTENANCE OF TRAFFIC PLAN STAGE 1
8. MAINTENANCE OF TRAFFIC PLAN STAGE 2
9. DISTRICT 2 STANDARD 34.1
10. PAVEMENT DETAILS
11. PLAN AND ELEVATION
12. REPAIR DETAILS
13. BAR SPLICERS

STATE HIGHWAY STANDARDS

000001-08	STANDARD SYMBOLS, ABBREVIATIONS AND PATTERNS
482001-02	HMA SHOULDER ADJACENT TO FLEXIBLE PAVEMENT
701006-05	OFF-RD OPERATIONS, 2L, 2W, 15' TO 24" FROM PAVEMENT EDGE
701201-05	LANE CLOSURE, 2L, 2W, DAY ONLY, FOR SPEEDS > 45 MPH
701301-04	LANE CLOSURE, 2L, 2W, SHORT TIME OPERATIONS
701311-03	LANE CLOSURE, 2L, 2W, MOVING OPERATIONS-DAY ONLY
701321-18	LANE CLOSURE, 2L, 2W, BRIDGE REPAIR WITH BARRIER
701326-04	LANE CLOSURE, 2L, 2W, PAVEMENT WIDENING FOR SPEEDS > 45 MPH
701901-08	TRAFFIC CONTROL DEVICES
704001-08	TEMPORARY CONCRETE BARRIER
780001-05	TYPICAL PAVEMENT MARKINGS
782006-01	GUARDRAIL AND BARRIER WALL REFLECTOR MOUNTING DETAILS

MAINTENANCE OF TRAFFIC GENERAL NOTES

1. THE MAINTENANCE OF TRAFFIC CONTROL (MOT) PLANS SHALL SERVE AS A GUIDE FOR SAFE DIVERSION OF TRAFFIC DURING EXECUTION OF THIS CONTRACT. HOWEVER, THE CONTRACTOR MAY MODIFY THE MOT PLANS TO MEET CONSTRUCTION NEEDS, BUT NOT AT THE EXPENSE OF PUBLIC SAFETY OR CONVENIENCE. ANY CHANGES TO THE MOT PLANS SHALL BE SUBMITTED TO THE ENGINEER FOR APPROVAL.
2. THE ENGINEER SHALL BE INFORMED 48 HOURS IN ADVANCE OF ANY PROPOSED CHANGE TO THE MOT PLANS.
3. ALL EXISTING PAVEMENT MARKINGS IN CONFLICT WITH THE MAINTENANCE OF TRAFFIC STRIPING SHALL BE BLACKED OUT TO THE LIMITS SHOWN IN THE PLANS.
4. ALL TEMPORARY PAVEMENT MARKING WHICH CONFLICTS WITH THE NEXT STAGE OR FINAL STRIPING SHALL BE REMOVED OR BLACKED OUT TO THE LIMITS SPECIFIED IN THE PLANS AND IN THE SCHEDULES OF PAVEMENT MARKING.
5. ALL TRAFFIC CONTROL DEVICES USED FOR THE MAINTENANCE OF TRAFFIC, AS DETAILED ON THE PLANS OR HIGHWAY STANDARD, SHALL BE REFLECTORIZED PRIOR TO INSTALLATION AND CLEANED AS SPECIFIED IN THE MAINTENANCE OF TRAFFIC SPECIAL PROVISIONS OR AS DIRECTED BY THE ENGINEER.
6. ALL EXISTING SIGNS WITHIN MAINTENANCE OF TRAFFIC LIMITS WHICH ARE OBSCURED BY OR INTERFERE WITH CONSTRUCTION OPERATIONS AND MAINTENANCE OF TRAFFIC, SHALL BE COVERED OR REMOVED BY THE CONTRACTOR UNLESS SPECIFIED IN THE PLANS OR WHEN DIRECTED BY THE ENGINEER. THIS WORK SHALL BE IN ACCORDANCE WITH ARTICLE 107.25 OF THE IDOT STANDARD SPECIFICATIONS.
7. A FULL DEPTH SAWCUT WILL BE REQUIRED BETWEEN PAVEMENT, CURB AND/OR GUTTER TO REMAIN AND PAVEMENT, CURB AND/OR GUTTER TO BE REMOVED PRIOR TO BEGINNING OF REMOVAL WORK. COST TO BE INCLUDED WITH APPLICABLE REMOVAL ITEMS.
8. THE CONTRACTOR SHALL CONTACT THE IDOT DISTRICT 2 ENGINEER AT (815)284-2271 A MINIMUM OF 72 HOURS IN ADVANCE OF BEGINNING WORK.

SUGGESTED MAINTENANCE OF TRAFFIC SEQUENCING

PRESTAGE

INSTALL CONSTRUCTION TRAFFIC CONTROL SIGNS, DRUMS AND BARRICADES FOR PRE-STAGE CONSTRUCTION. WITH THE EXCEPTION OF THE W6-3 (2-WAY TRAFFIC) SIGNS, PHYSICAL SIGN LOCATIONS DO NOT CHANGE DURING STAGE 1 AND STAGE 2 UNLESS OTHERWISE DIRECTED BY THE ENGINEER.

MILL SHOULDERS, AND PLACE HOT-MIX ASPHALT SHOULDERS, 8".

COORDINATE WITH THE ENGINEER IF EXISTING GUARDRAIL NEEDS TO BE REMOVED TO FACILITATE SHOULDER CONSTRUCTION. AREAS WHERE GUARDRAIL IS REMOVED MUST BE PROTECTED IN ACCORDANCE WITH IDOT STANDARD TRAFFIC CONTROL AND PROTECTION MEASURES TO THE SATISFACTION OF THE ENGINEER. GUARDRAIL MUST BE RE-INSTALLED PRIOR TO IMPLEMENTATION OF STAGED CONSTRUCTION TRAFFIC DETOUR. COST INCLUDED IN ITEMS "EXCAVATING AND GRADING EXISTING SHOULDER" AND "HOT-MIX ASPHALT SHOULDERS, 8".

PRE-STAGE PHASE 2 SHOULDER WORK MAY BE DONE DURING STAGE 1 MOT SETUP. THE FOLLOWING WILL APPLY IF THIS OPTION IS PURSUED:

All Pre-Stage Phase 2 shoulder work must be done during the Stage 1 MOT setup. A revised schedule of work must be submitted to the Engineer for approval prior to beginning of contract work.

All labor, equipment and material for shoulder work must be kept behind the Stage 1 Temporary Concrete Barrier Wall. Traffic control and protection will be included in the original price bid for Stage 1 MOT items "Traffic Control & Protection Std 101321", "Temporary Concrete Barrier Wall", and "Temporary Bridge Traffic Signals".

Provisions, notes, and items "Traffic Control Surveillance", "Traffic Control & Protection Standard 701326", and "Traffic Control & Protection Standard 701201" intended for the Pre-Stage Phase 2 MOT portion will no longer apply and will be deducted from the original contract.

STAGE 1

INSTALL ALL STAGE 1 CONSTRUCTION TRAFFIC CONTROL SIGNALS, SIGNS, DRUMS, BARRICADES, TEMPORARY CONCRETE BARRIER, TEMPORARY IMPACT ATTENUATORS, AND TEMPORARY PAVEMENT MARKINGS AS DETAILED IN STAGE 1 PLANS AND APPROPRIATE STANDARD DRAWINGS. LOCATIONS FOR ADVANCE WARNING SIGNS, TEMPORARY BRIDGE SIGNALS, AND STOP LINES DO NOT CHANGE FROM STAGE 1 TO STAGE 2 UNLESS DIRECTED OTHERWISE BY THE ENGINEER.

MERGE ALL TRAFFIC IN BOTH DIRECTIONS TO THE EXISTING WESTBOUND LANE AND SHOULDER OF SN 071-0015 CROSSING PINE CREEK.

COORDINATE WORK TO BE COMPLETED IN THIS STAGE WITH DETAILS IN THE BRIDGE PLANS.

STAGE 2

CHANGE STAGE 1 CONSTRUCTION TRAFFIC CONTROL SIGNALS, SIGNS, DRUMS, BARRICADES, TEMPORARY CONCRETE BARRIER, TEMPORARY IMPACT ATTENUATORS, AND TEMPORARY PAVEMENT MARKINGS AS NEEDED TO REFLECT STAGE 2 PLANS AND APPROPRIATE STANDARD DRAWINGS.

MERGE ALL TRAFFIC IN BOTH DIRECTIONS TO THE EXISTING EASTBOUND LANE AND SHOULDER OF SN 071-0015 CROSSING PINE CREEK.

REMOVE ALL CONFLICTING TRAFFIC CONTROL ITEMS FROM STAGE 1 SETUP.

COORDINATE WORK TO BE COMPLETED IN THIS STAGE WITH DETAILS IN THE BRIDGE PLANS.

POST STAGE

REMOVE ALL CONSTRUCTION TRAFFIC CONTROL AND TEMPORARY CONSTRUCTION ITEMS.

REMOVE ANY REMAINING EXISTING TEMPORARY PAVEMENT MARKINGS WITHIN THE PERMANENT PAVEMENT MARKING LIMITS.

PAY ITEMS FOR MAINTENANCE OF TRAFFIC WORK

ITEM "TEMPORARY BRIDGE TRAFFIC SIGNALS" IS INTENDED FOR THE MATERIAL, EQUIPMENT AND LABOR NECESSARY FOR THE INSTALLATION, MAINTENANCE AND RELOCATION OF THE TEMPORARY TRAFFIC SIGNALS AT BOTH ENDS OF THE PROJECT.

ITEM "TRAFFIC CONTROL AND PROTECTION, STANDARD 701201" IS INTENDED FOR THE MATERIAL, EQUIPMENT AND LABOR NECESSARY FOR THE INSTALLATION, MAINTENANCE AND RELOCATION OF SIGNS, DRUMS, LIGHTS, PANELS, AND REFLECTORS NECESSARY TO MAINTAIN SAFE TRAFFIC FLOW DURING PRE-STAGE AND POST-STAGE CONSTRUCTION IN ACCORDANCE WITH IDOT STANDARD 701201.

ITEM "TRAFFIC CONTROL AND PROTECTION, STANDARD 701326" IS INTENDED FOR THE MATERIAL, EQUIPMENT AND LABOR NECESSARY TO MAINTAIN TRAFFIC CONTROL AND PROTECTION FOR PRE-STAGE AND POST-STAGE CONSTRUCTION DROP-OFF AND OPEN AREAS DURING TIMES WHEN CONTRACTOR IS NOT ENGAGING IN CONSTRUCTION OPERATIONS.

ITEM "TRAFFIC CONTROL SURVEILLANCE" IS INTENDED FOR THE MATERIAL, EQUIPMENT AND LABOR NECESSARY TO MAINTAIN TRAFFIC CONTROL AND PROTECTION FOR PRE-STAGE AND POST-STAGE CONSTRUCTION DROP-OFF AND OPEN AREAS DURING TIMES WHEN CONTRACTOR IS NOT ENGAGING IN CONSTRUCTION OPERATIONS.

ITEM "TRAFFIC CONTROL AND PROTECTION, STANDARD 701321" IS INTENDED FOR THE MATERIAL, EQUIPMENT AND LABOR NECESSARY FOR THE INSTALLATION, MAINTENANCE AND RELOCATION OF TEMPORARY TRAFFIC SIGNALS, SIGNS, DRUMS, LIGHTS, PANELS, AND REFLECTORS NECESSARY TO MAINTAIN SAFE TRAFFIC FLOW DURING THE SETUP OF STAGED CONSTRUCTION MAINTENANCE OF TRAFFIC IN ACCORDANCE WITH IDOT STANDARD 701321.

ITEM "SHORT TERM PAVEMENT MARKING REMOVAL" IS INTENDED FOR THE MATERIAL, EQUIPMENT AND LABOR NECESSARY TO REMOVE TEMPORARY PAVEMENT MARKINGS TO THE LIMITS SPECIFIED IN THE PLANS.

ITEM "TEMPORARY PAVEMENT MARKING TAPE" IS INTENDED FOR THE MATERIAL, EQUIPMENT AND LABOR NECESSARY TO PLACE AND MAINTAIN TEMPORARY PAVEMENT MARKING TAPE OF THE TYPE, SIZE AND LIMITS SPECIFIED IN THE PLANS, SPECIFICATIONS, AND IDOT STANDARD 780001.

ITEM "MODIFIED URETHANE PAVEMENT MARKING" IS INTENDED FOR THE MATERIAL, EQUIPMENT AND LABOR NECESSARY TO PLACE PERMANENT PAVEMENT MARKINGS OF THE TYPE AND TO THE LIMITS SPECIFIED IN THE PLANS, SPECIFICATIONS AND IDOT STANDARD 780001.

SCHEDULE OF PAVEMENT MARKING AND REMOVAL												
Item	Location	Station		Offset		Pavement Markings				Short Term Marking Removal		
		Begin	End	Min	Max	6" Blackout Tape	4" Temp	24" Temp	4" Perm.	Blackout Tape	4" Temp	24" Temp
											Sq Ft	Sq Ft
6" Blackout Tape	WB Permanent Edgeline	588+20	591+40	12' Lt	12' Lt	320					160	
4" White Temp Tape	Left Travel Lane Edgeline	588+20	591+40	12' Lt	16' Lt			320				
4" White Temp Tape	Right Travel Lane Edgeline	588+20	591+40	12' Rt	4.0' Lt			620				
24" White Temp Tape	Westbound Stop Line									12		
24" White Temp Tape	Eastbound Stop Line									12		
STAGE 2												
Temp Marking Removal	Stage 1 Rt Travel Ln Edgeline	586+70	592+90	12' Rt	4' Lt						207	
6" Blackout Tape	EB Permanent Edgeline	588+20	591+40	12' Lt	12' Lt	320					160	
4" White Temp Tape	Left Travel Lane Edgeline	586+70	592+90	12' Lt	4.0' Rt			620				
4" White Temp Tape	Right Travel Lane Edgeline	588+20	591+40	12' Rt	16' Rt			320				
POST STAGE												
Temp Marking Removal	Stage 1 Lt Travel Ln Edgeline	588+20	591+40	12' Lt	16' Lt						107	
Temp Marking Removal	Stage 2 Lt Travel Ln Edgeline	586+70	592+90	12' Lt	4.0' Rt						207	
Temp Marking Removal	Stage 2 Rt Travel Ln Edgeline	588+20	591+40	12' Rt	16' Rt						107	
Temp Marking Removal	EB, WB, Driveway Stop Lines											48
4" Permanent Marking	WB Permanent White Edgeline	588+20	591+40	12' Lt	12' Lt							320
4" Permanent Marking	CL Permanent Yellow Dashline	588+20	591+40	0.0'	0.0'							80
4" Permanent Marking	EB, WB, Driveway Stop Lines	588+20	591+40	12' Rt	12' Rt							320
TOTAL						640	1,880	24	720	996		

SCHEDULE OF TEMP CONCRETE BARRIER AND REFLECTORS								
Location	Station		Temporary Conc Barrier		Guardrail Refl Type A		Bridge Rail Refl Type A	
	Begin	End	Set Stage 1	Reloc Stage 2	Stage 1	Stage 2	Stage 1	Stage 2
			Foot	Foot	Each	Each	Each	Each
Stage 1 & Stage 2	587+60	592+55	500	500				
North Guardrail	588+00	589+45			6			
	589+90	591+00			5			
North Bridge Rail	589+45	589+90					4	
South Guardrail	588+00	589+60				7		
	590+05	591+00				4		
South Bridge Rail	589+60	590+05						4
TOTAL			500	500	30			

MODEL Path: \\hilton\proj\hilton\042100456-1\07 64R33 CHM\Submittals\11-25-21\12-2021 14-Miles-to-MOT NOTES.dgn FILE NAME: \\hilton\proj\hilton\042100456-1\07 64R33 CHM\Submittals\11-25-21\12-2021 14-Miles-to-MOT NOTES.dgn

HAMILTON CONSULTING ENGINEERS, INC.
 3230 Executive Drive, Joliet, Illinois 60431
 Ph: (815) 730-3444 Fax: (815) 730-6703
 IL LICENSE NO. 184-003005
 © 2020 HAMILTON CONSULTING ENGINEERS, INC.

USER NAME = scootw	DESIGNED -	REVISED -
	DRAWN - DWS	REVISED -
PLOT SCALE = 100,0000 / 1in.	CHECKED -	REVISED -
PLOT DATE = 12/11/2021	DATE -	REVISED -

**STATE OF ILLINOIS
DEPARTMENT OF TRANSPORTATION**

IL 64 CROSSING PINE CREEK GENERAL NOTES / CONSTRUCTION SEQUENCE				F.A.P. RTE.	SECTION	COUNTY	TOTAL SHEETS	SHEET NO.
				17	(102BR)RS	OGLE	13	2
				CONTRACT NO. 64R33				
SCALE: NA	SHEET 2 OF SHEETS	STA.	TO STA.	ILLINOIS FED. AID PROJECT				

SUMMARY OF QUANTITIES

CODE NO.	ITEM	UNIT	TOTAL QUANTITY
20200600	EXCAVATING AND GRADING EXISTING SHOULDER	UNIT	5.2
40602978	HOT-MIX ASPHALT BINDER COURSE, IL 9.5, N50	TON	52
40604064	HOT-MIX ASPHALT SURFACE COURSE, IL 9.5, MIX "D" N90	TON	62
50300225	CONCRETE STRUCTURES	CU YD	4.2
50300255	CONCRETE SUPERSTRUCTURE	CU YD	79.8
50300300	PROTECTIVE COAT	SQ YD	188
50800205	REINFORCEMENT BARS, EPOXY COATED	POUND	16,080
50800515	BAR SPLICERS	EACH	59
67100100	MOBILIZATION	L SUM	1
70100405	TRAFFIC CONTROL AND PROTECTION, STANDARD 701321	EACH	1
70100450	TRAFFIC CONTROL AND PROTECTION, STANDARD 701201	L SUM	1
70100500	TRAFFIC CONTROL AND PROTECTION, STANDARD 701326	L SUM	1
70103815	TRAFFIC CONTROL SURVEILLANCE	CAL DA	14
70106500	TEMPORARY BRIDGE TRAFFIC SIGNALS	EACH	1
70107006	PAVEMENT MARKING BLACKOUT TAPE, 6"	FOOT	640
70300150	SHORT TERM PAVEMENT MARKING REMOVAL	SQ FT	996

CODE NO.	ITEM	UNIT	TOTAL QUANTITY
70307120	TEMPORARY PAVEMENT MARKING - LINE 4" - TYPE IV TAPE	FOOT	1,880
70307210	TEMPORARY PAVEMENT MARKING - LINE 24" - TYPE IV TAPE	FOOT	24
70400100	TEMPORARY CONCRETE BARRIER	FOOT	500
70400200	RELOCATE TEMPORARY CONCRETE BARRIER	FOOT	500
70600250	IMPACT ATTENUATORS, TEMPORARY (NON- REDIRECTIVE), TEST LEVEL 3	EACH	2
70600350	IMPACT ATTENUATORS, RELOCATE (NON- REDIRECTIVE), TEST LEVEL 3	EACH	2
* 78001110	MODIFIED URETHANE PAVEMENT MARKING LINE 4"	FOOT	720
* 78200005	GUARDRAIL REFLECTORS, TYPE A	EACH	30
Z0004552	APPROACH SLAB REMOVAL	SQ YD	188

*= SPECIALTY ITEM

MODEL: Default
 FILE NAME: \\s023\project\1002100489 - IVD 7 64R33 Cops\Submittals\1-23-21\3-2021-MatMorris-SOC.dgn

HAMILTON CONSULTING ENGINEERS, INC.
 3230 Executive Drive, Joliet, Illinois 60431
 Ph: (815) 730-3444 Fax: (815) 730-6703
 LICENSE NO. 184-002005
 © 2020 HAMILTON CONSULTING ENGINEERS, INC.

USER NAME = scottw	DESIGNED - MGB	REVISED -
PLOT SCALE = 2.0000" / in.	DRAWN - DWS	REVISED -
PLOT DATE = 12/2/2021	CHECKED - HJH	REVISED -
	DATE -	REVISED -

**STATE OF ILLINOIS
 DEPARTMENT OF TRANSPORTATION**

**IL 64 CROSSING PINE CREEK
 SCHEDULE OF QUANTITIES**

SCALE: SHEET 3 OF SHEETS STA. TO STA.

F.A.P. RTE.	SECTION	COUNTY	TOTAL SHEETS	SHEET NO.
17	(102BR)RS	OGLE	13	3
CONTRACT NO. 64R33				
ILLINOIS FED. AID PROJECT				

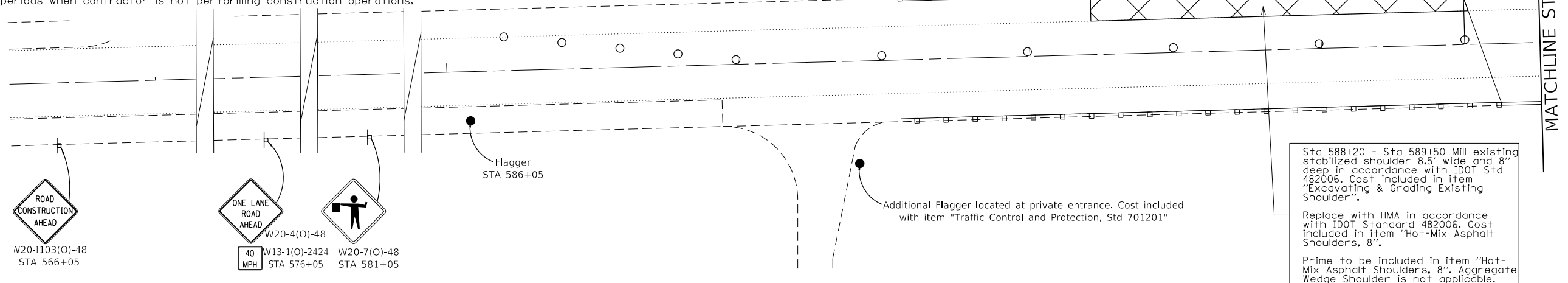
The following shall be done to the satisfaction of the Engineer at the end of each workday:

- Remove all equipment, material and debris from the original travel lanes.
- Move cones, drums and barricades from the original travel lanes to the shoulder work is being done on.
- Cover or otherwise remove visibility of W20-7 (Flagger Symbol) and W20-4 (ONE LANE ROAD AHEAD) signs at all construction zone approaches.
- Protect incomplete work areas adjacent to travel lanes in accordance with IDOT Standard 701326.
- Restore traffic to original lanes and direction.

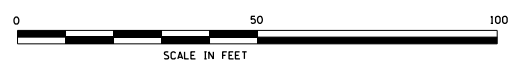
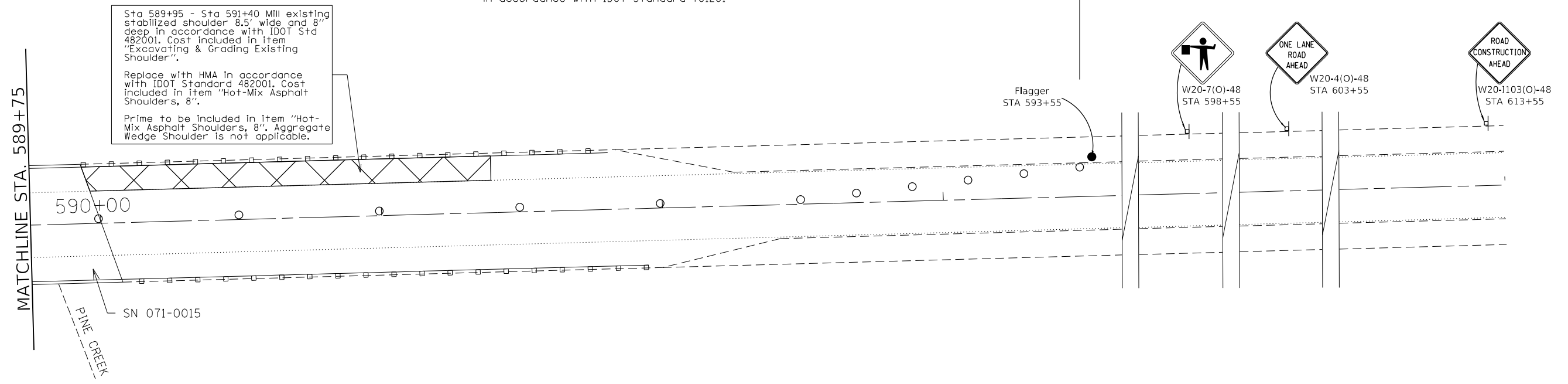
Cost of this work shall be included in the item "Traffic Control and Protection, Standard 701326".

Protect incomplete work areas in accordance with item "Traffic Control Surveillance" during periods when contractor is not performing construction operations.

Sta 586+10 - Sta 593+50. Cones, drums and barricades shall be tapered, dimensioned and spaced in accordance with IDOT Standard 701201



Sta 586+10 - Sta 593+50. Cones, drums and barricades shall be tapered, dimensioned and spaced in accordance with IDOT Standard 701201



MODEL: default
FILE NAME: E:\projects\illinois\20911\CAD\IT - Morris IL 64 - 10015-210911-Hillier IL 64 - PreStage 1.dgn

HAMILTON CONSULTING ENGINEERS, INC.
3230 Executive Drive, Joliet, Illinois 60431
Ph: (815) 730-3444 Fax: (815) 730-6703
& LICENSE NO. 114-003200
© 2020 HAMILTON CONSULTING ENGINEERS, INC.

USER NAME = mbutling	DESIGNED -	REVISED -
PLOT SCALE = 40,0000' / in.	DRAWN -	REVISED -
PLOT DATE = 11/10/2021	CHECKED -	REVISED -
	DATE -	REVISED -

**STATE OF ILLINOIS
DEPARTMENT OF TRANSPORTATION**

**IL 64 CROSSING PINE CREEK
TRAFFIC CONTROL PRE-STAGE PHASE 1 PLAN SHEET**

SCALE: 1"=20' SHEET OF SHEETS STA. 566+00 TO STA. 613+60

F.A.P. RTE.	SECTION	COUNTY	TOTAL SHEETS	SHEET NO.
17	(102BR)RS	OGLE	9	5
CONTRACT NO. 64R33				
ILLINOIS FED. AID PROJECT				

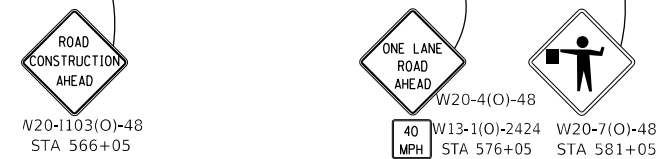
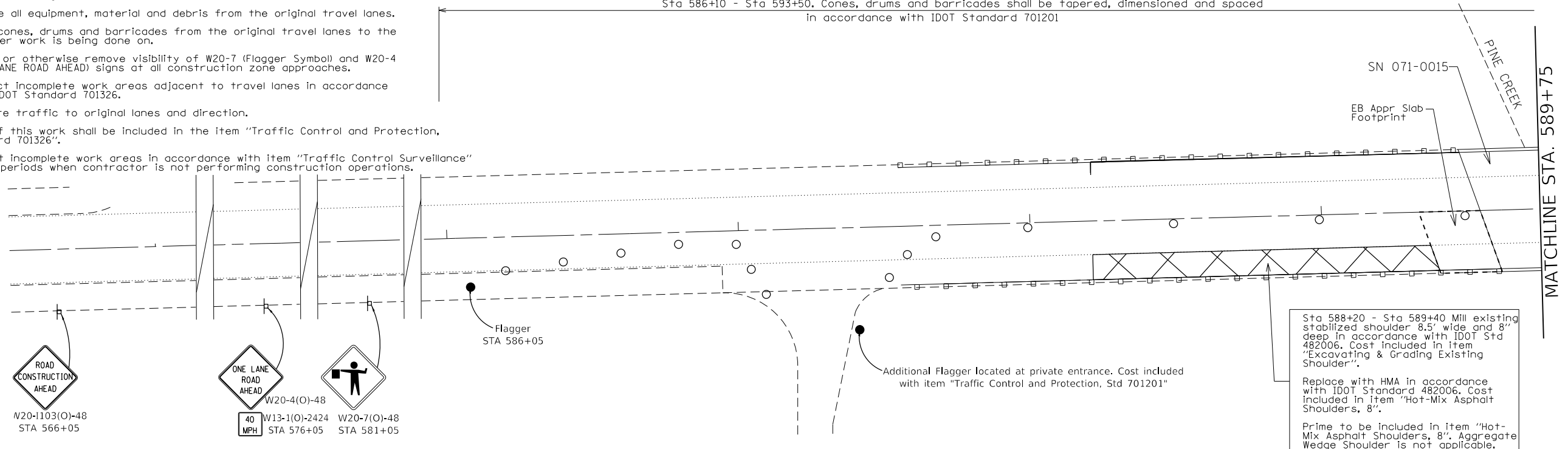
NOTE A: The following shall be done to the satisfaction of the Engineer at the end of each workday:

- Remove all equipment, material and debris from the original travel lanes.
- Move cones, drums and barricades from the original travel lanes to the shoulder work is being done on.
- Cover or otherwise remove visibility of W20-7 (Flagger Symbol) and W20-4 (ONE LANE ROAD AHEAD) signs at all construction zone approaches.
- Protect incomplete work areas adjacent to travel lanes in accordance with IDOT Standard 701326.
- Restore traffic to original lanes and direction.

Cost of this work shall be included in the item "Traffic Control and Protection, Standard 701326".

Protect incomplete work areas in accordance with item "Traffic Control Surveillance" during periods when contractor is not performing construction operations.

Sta 586+10 - Sta 593+50. Cones, drums and barricades shall be tapered, dimensioned and spaced in accordance with IDOT Standard 701201

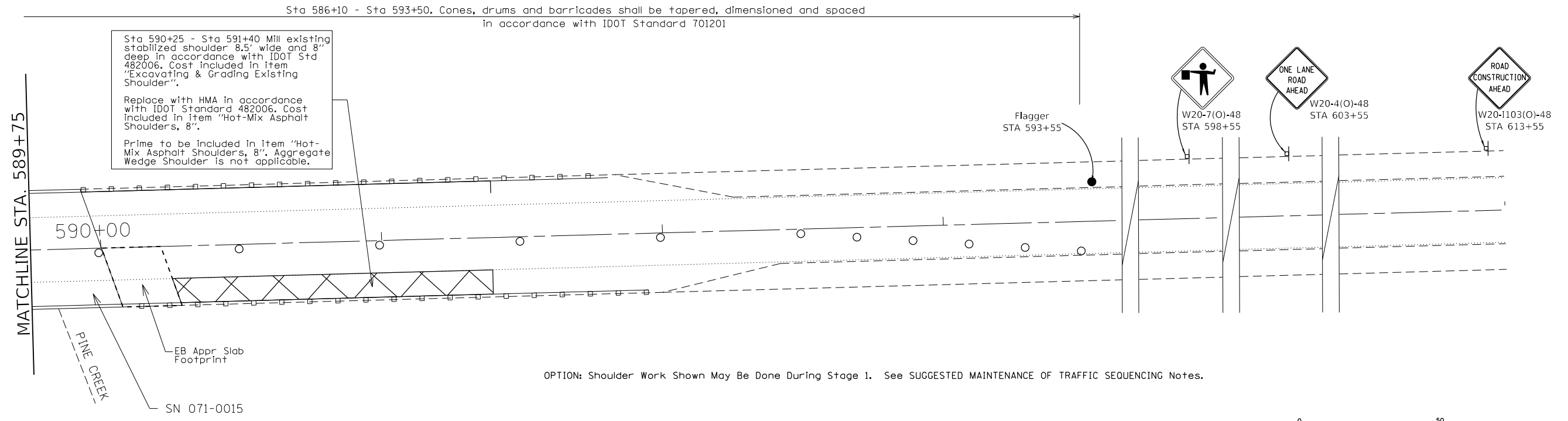


Sta 588+20 - Sta 589+40 Mill existing stabilized shoulder 8.5' wide and 8" deep in accordance with IDOT Std 482006. Cost included in item "Excavating & Grading Existing Shoulder".

Replace with HMA in accordance with IDOT Standard 482006. Cost included in item "Hot-Mix Asphalt Shoulders, 8".

Prime to be included in item "Hot-Mix Asphalt Shoulders, 8". Aggregate Wedge Shoulder is not applicable.

Sta 586+10 - Sta 593+50. Cones, drums and barricades shall be tapered, dimensioned and spaced in accordance with IDOT Standard 701201



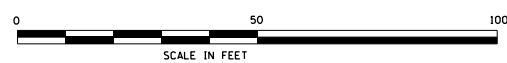
Sta 590+25 - Sta 591+40 Mill existing stabilized shoulder 8.5' wide and 8" deep in accordance with IDOT Std 482006. Cost included in item "Excavating & Grading Existing Shoulder".

Replace with HMA in accordance with IDOT Standard 482006. Cost included in item "Hot-Mix Asphalt Shoulders, 8".

Prime to be included in item "Hot-Mix Asphalt Shoulders, 8". Aggregate Wedge Shoulder is not applicable.



OPTION: Shoulder Work Shown May Be Done During Stage 1. See SUGGESTED MAINTENANCE OF TRAFFIC SEQUENCING Notes.



MODEL: Default; FILE NAME: E:\projects\illinois\50911-1\CAD\IT - Morris IL 64 - 10/16/2021\11-Hillier IL 64 - PreStage 2.dwg

HAMILTON CONSULTING ENGINEERS, INC.
 3230 Executive Drive, Joliet, Illinois 60431
 Ph: (815) 730-3444 Fax: (815) 730-6703
 & LICENSE NO. 116-003200
 © 2020 HAMILTON CONSULTING ENGINEERS, INC.

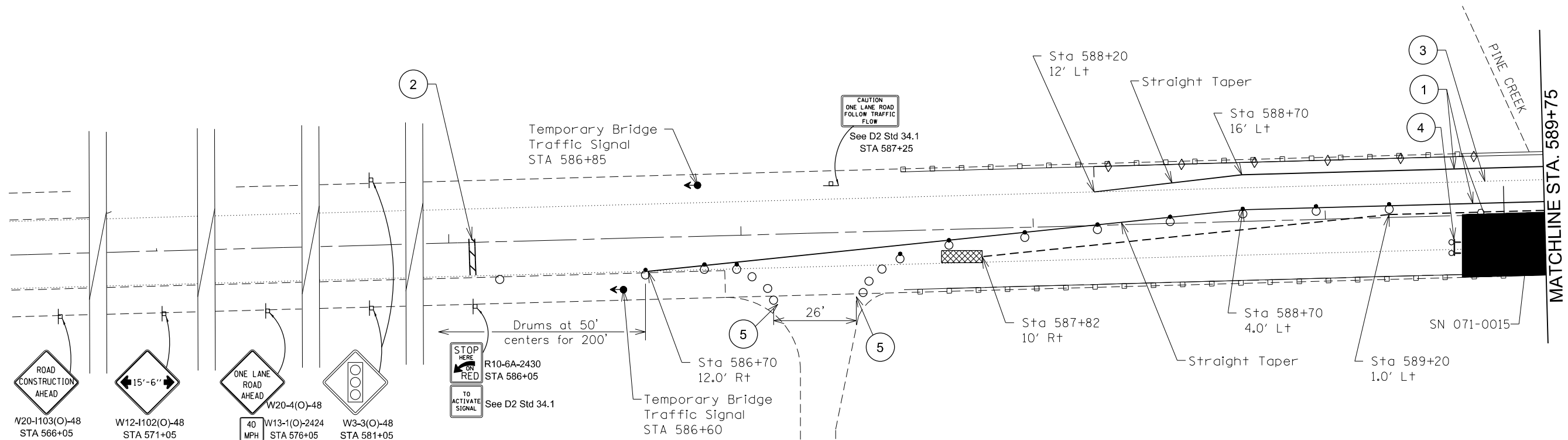
USER NAME = mbutling	DESIGNED -	REVISED -
PLOT SCALE = 40,0000' / in.	DRAWN -	REVISED -
PLOT DATE = 11/10/2021	CHECKED -	REVISED -
	DATE -	REVISED -

**STATE OF ILLINOIS
 DEPARTMENT OF TRANSPORTATION**

**IL 64 CROSSING PINE CREEK
 TRAFFIC CONTROL PRE-STAGE PHASE 2 PLAN SHEET**

SCALE: 1"=20' SHEET OF SHEETS STA. 566+00 TO STA. 613+60

F.A.P. RTE.	SECTION	COUNTY	TOTAL SHEETS	SHEET NO.
17	(102BR)RS	OGLE	9	5
CONTRACT NO. 64R33				
ILLINOIS FED. AID PROJECT				



W20-1103(O)-48 STA 566+05
 W12-1102(O)-48 STA 571+05
 W20-4(O)-48
 40 MPH W13-1(O)-2424 STA 576+05
 W3-3(O)-48 STA 581+05

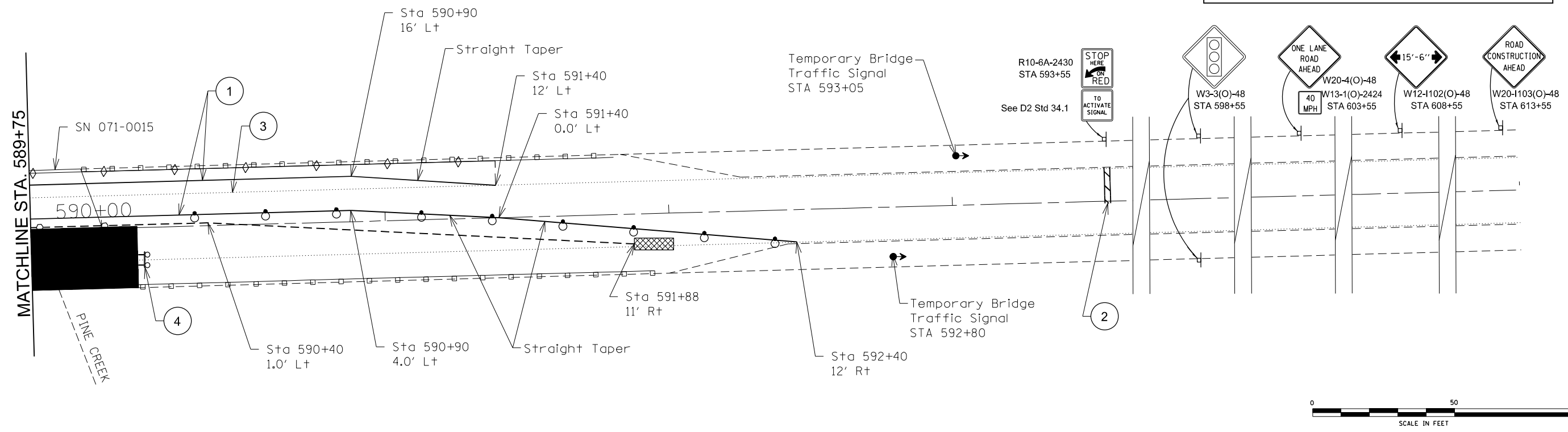
SYMBOLS

Work area	Temporary impact attenuator, non-redirective, test level 3.
Drum. See IDOT Std 701901.	Temp. concrete barrier. See IDOT Std 704001.
Drum with steady burning bi-directional light. See IDOT Std 701901.	Temporary bridge traffic signal.
Crystal, bidirectional guardrail/ bridge rail reflector, type A. See IDOT Std 782006.	Sign on portable or permanent support.
Type III barricade with flashing lights. See IDOT Std 701901.	Type C Reflector. Cost included in "Temporary Concrete Barrier" & "Relocate Temporary Conc. Barrier". See IDOT Std 704001

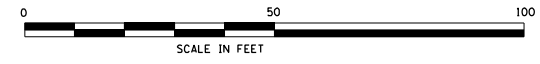
CALLOUT INDEX

- 1 Pavement Marking Tape, Type IV, 4" White
- 2 Pavement Marking Tape, Type IV, 24" White
- 3 Pavement Marking Blackout Tape, 6"
- 4 Type III Barricade to be placed when no work is being performed.
- 5 3 barrels at 4' centers. Cost included in item "Traffic Control and Protection Standard 701321"

NOTE: All barricades, drums, vertical panels and cones shall be offset and spaced in accordance with IDOT Standard 701321.



W3-3(O)-48 STA 598+55
 40 MPH W13-1(O)-2424 STA 603+55
 W20-4(O)-48
 W12-1102(O)-48 STA 608+55
 W20-1103(O)-48 STA 613+55



MODEL: D:\p1\11\11042100459-1\07 64R33 C:\p1\Submittal\11-25-21\11-2021-11\11042100459-1.dgn
 FILE NAME: 11042100459-1.dwg
 3230 Executive Drive, Joliet, Illinois 60431
 Ph: (815) 730-3444 Fax: (815) 730-6703
 LICENSE NO. 184-003005
 © 2020 HAMILTON CONSULTING ENGINEERS, INC.

HAMILTON CONSULTING ENGINEERS, INC.

USER NAME = scootw
 PLOT SCALE = 38,4504' / in.
 PLOT DATE = 12/1/2021

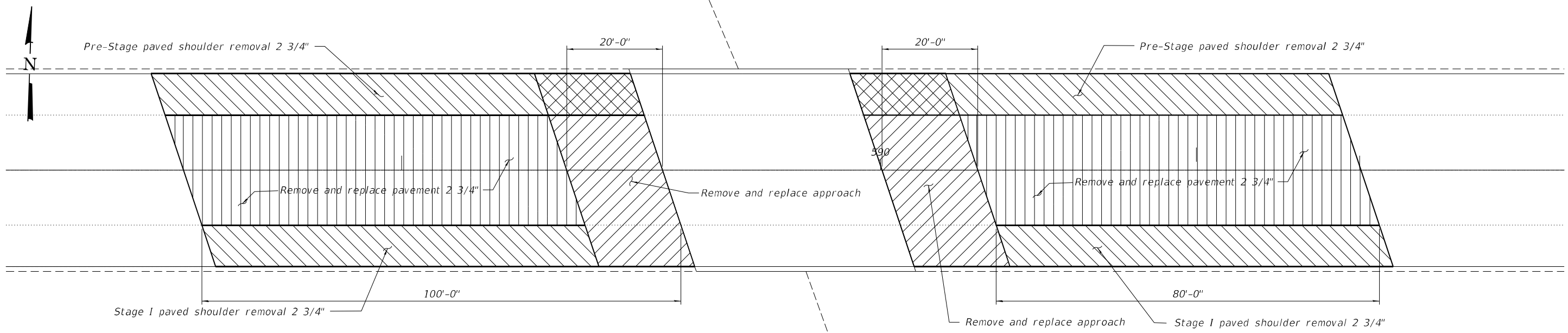
DESIGNED -	REVISED -
DRAWN -	REVISED -
CHECKED -	REVISED -
DATE -	REVISED -

**STATE OF ILLINOIS
 DEPARTMENT OF TRANSPORTATION**

**IL 64 CROSSING PINE CREEK
 TRAFFIC CONTROL STAGE 1 PLAN SHEET**

SCALE: 1"=20'
 SHEET OF SHEETS STA. 566+00 TO STA. 613+60

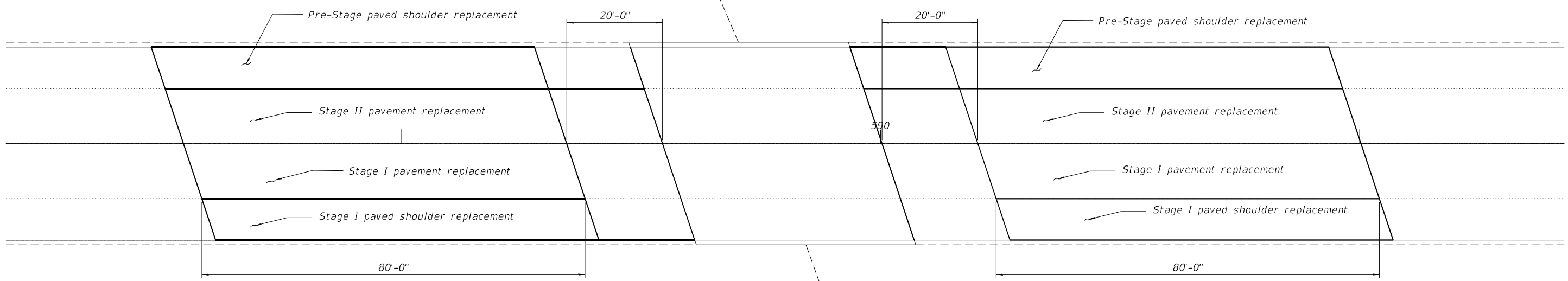
F.A.P. RTE.	SECTION	COUNTY	TOTAL SHEETS	SHEET NO.
17	(102BR)RS	OGLE	13	7
CONTRACT NO. 64R33				
ILLINOIS FED. AID PROJECT				



HMA

Location and Mixture Use(s):	Resurfacing	
	Surface	Binder
PG:	PG 58-28	PG 58-28
Design Air Voids	4.0 @ N90	4.0 @ N50
Mixture Composition	IL 9.5	IL 9.5FG
Friction Aggregate	C	N/A
Mix Weight	112	N/A
Quality Management Program	QC/QA	QC/QA
Sublot Size	N/A	N/A
Material Transfer Device	N/A	N/A

PAVEMENT REMOVAL PLAN



PAVEMENT REPLACEMENT PLAN

MODEL: Default
FILE NAME: \\kpf.com\dfs\bridge\2100459 (WO 7 64R33 SN 07-4015)02_Design (MS)\Pavement Removal Plan.dgn

kpff
Consulting Engineers
1560 Sherman Ave.
Suite 1020

USER NAME =	DESIGNED -	REVISED -
PLOT SCALE =	CHECKED -	REVISED -
PLOT DATE =	DRAWN -	REVISED -
	CHECKED -	REVISED -

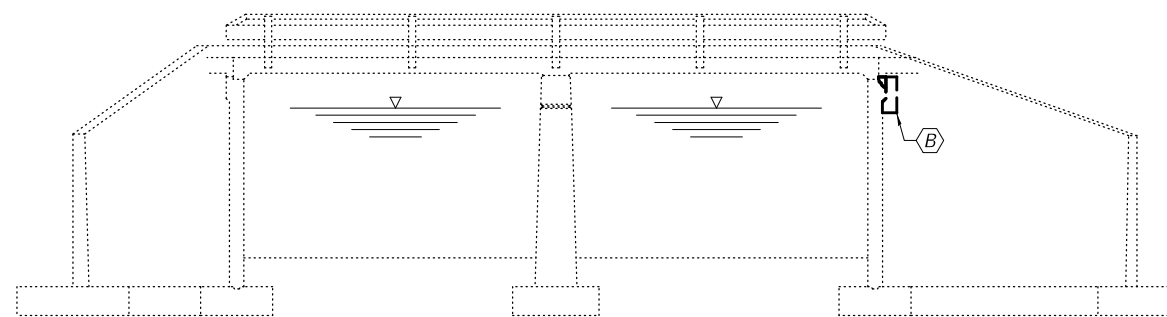
STATE OF ILLINOIS
DEPARTMENT OF TRANSPORTATION

ILL. 64 CROSSING PINE CREEK
PAVEMENT DETAILS

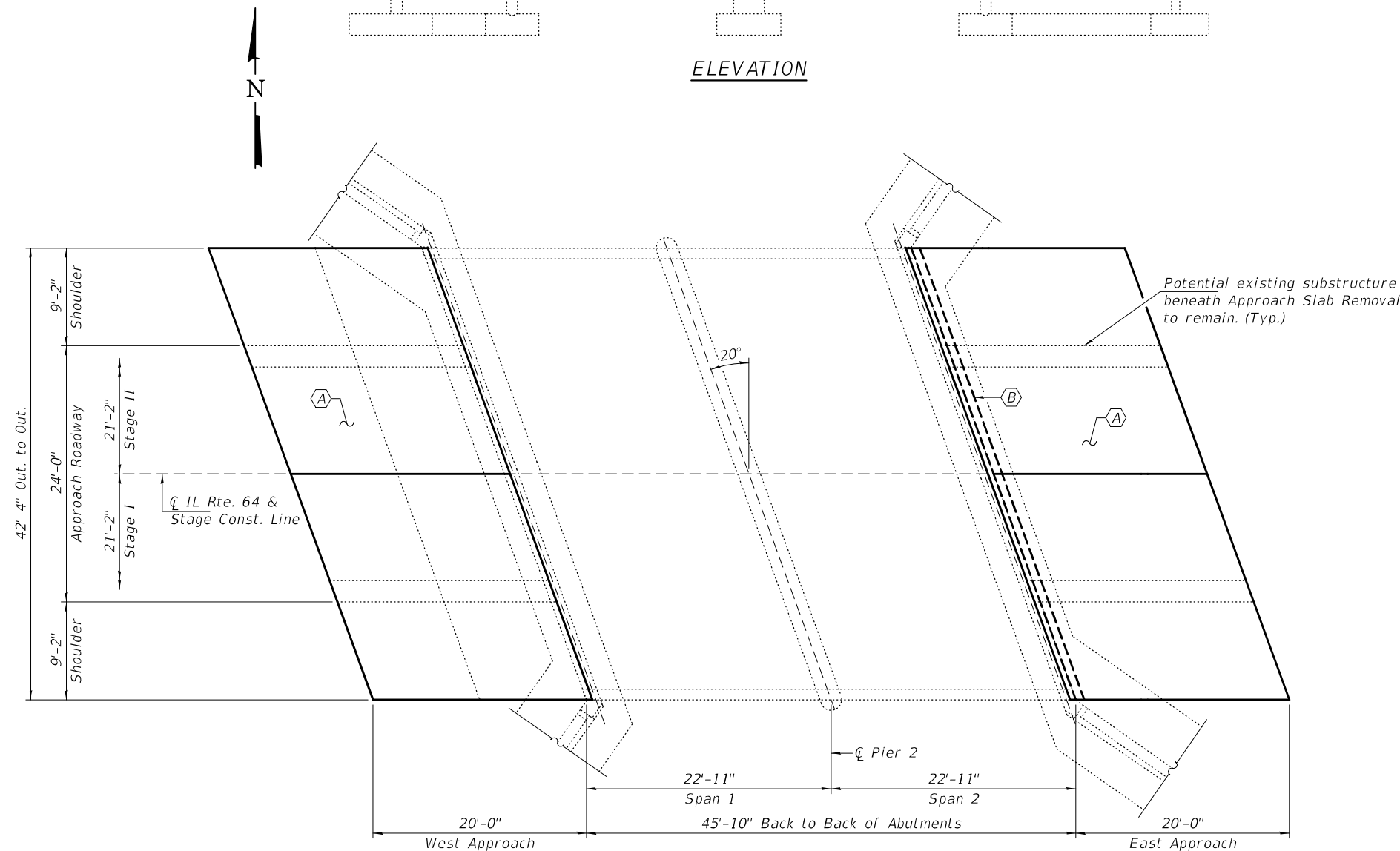
F.A. RTE.	SECTION	COUNTY	TOTAL SHEETS	SHEET NO.
17	(102BR)RS	OGLE	13	10
CONTRACT NO. 64R33				
ILLINOIS FED. AID PROJECT				

GENERAL NOTES

Plan dimensions and details relative to existing plans are subject to nominal construction variations. The Contractor shall field verify existing dimensions and details affecting new construction and make necessary approved adjustments prior to construction or ordering of materials. Such variations shall not be cause for additional compensation for a change in scope of the work, however, the Contractor will be paid for the quantity actually furnished at the unit price bid for the work. Reinforcement bars designated (E) shall be epoxy coated.



ELEVATION



PLAN

- (A) - Remove & Replace 20'-0" Approach Slab
- (B) - Repair East Abutment Corbel

TOTAL BILL OF MATERIAL

ITEM	UNIT	QUANTITY
Approach Slab Removal	Sq. Yd.	188
Concrete Superstructure	Cu. Yd.	79.8
Concrete Structures	Cu. Yd.	4.2
Reinforcement Bars, Epoxy Coated	Pound	16080
Bar Splicers	Each	59
Protective Coat	Sq. Yd.	188



Expires: November 30, 2022

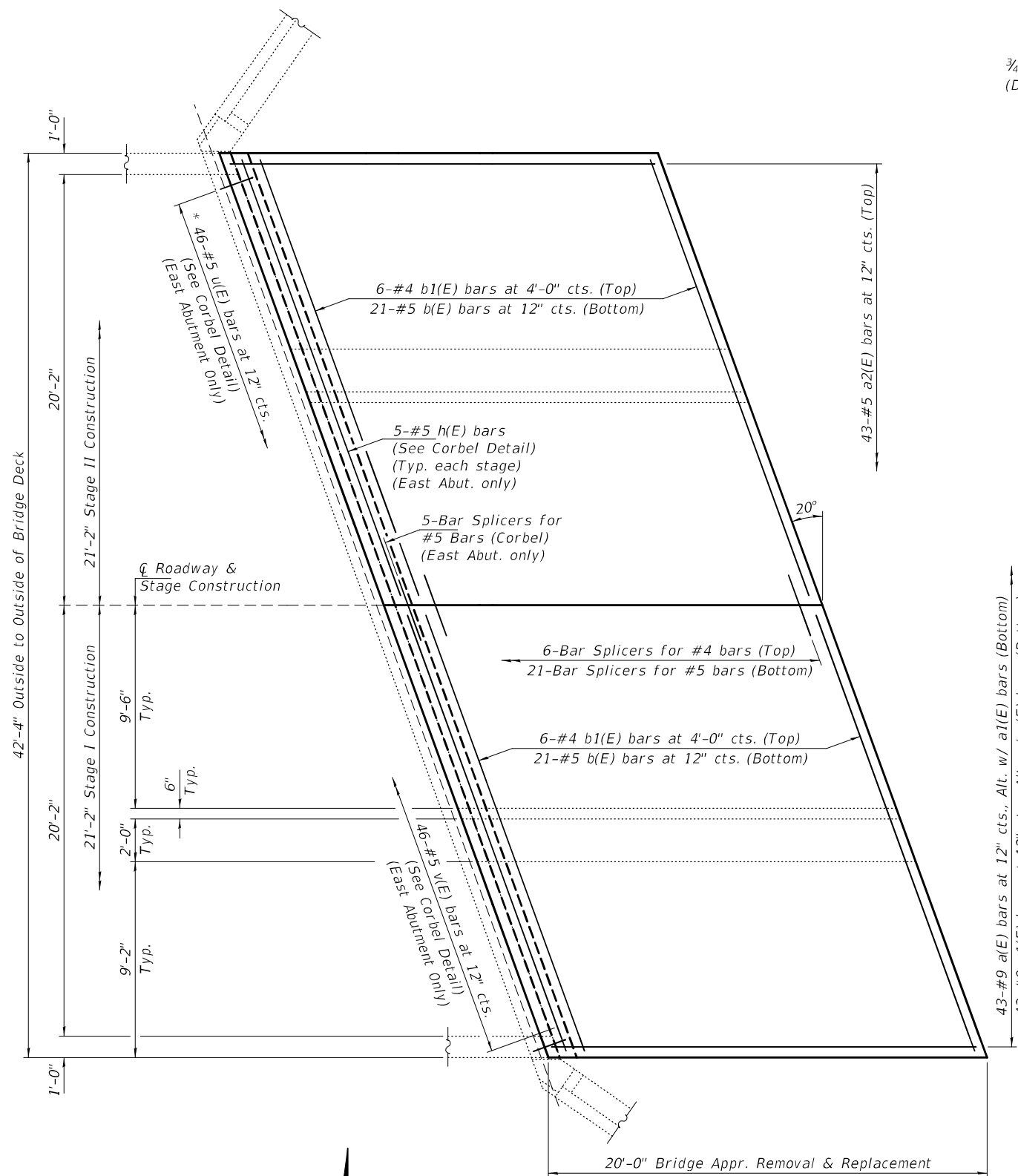
DESIGNED - Stephen M. Ryan	EXAMINED - <i>Tim A. Dech</i> ENGINEER OF STRUCTURAL SERVICES	DATE - JANUARY 21, 2022
CHECKED - Victor H. Veliz	PASSED - <i>David Puzey</i> ENGINEER OF BRIDGES AND STRUCTURES	REVISED -
DRAWN - STEFFEN		REVISED -
CHECKED - SMR VHV		

**STATE OF ILLINOIS
DEPARTMENT OF TRANSPORTATION**

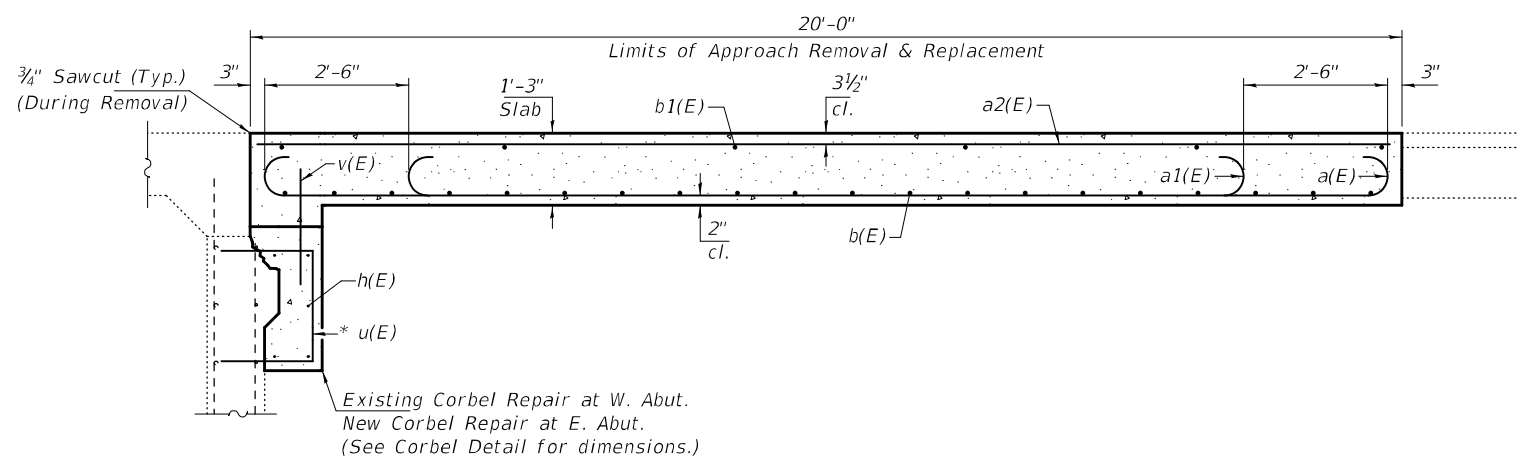
**GENERAL PLAN AND ELEVATION
ILLINOIS ROUTE 64 OVER DRAINAGE DITCH
SN 071-0015**

SHEET NO. 1 OF 3 SHEETS

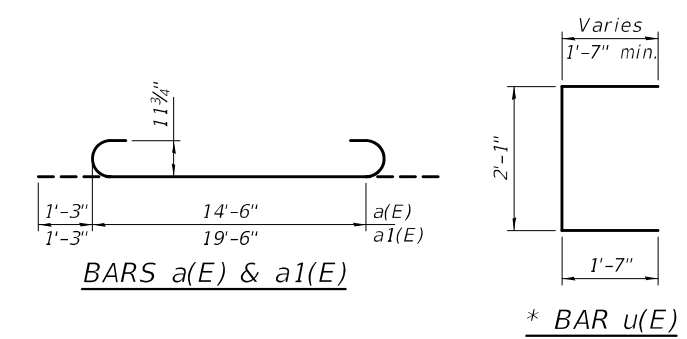
F.A.P. RTE. 17	SECTION (102BR)RS	COUNTY OGLE	TOTAL SHEETS 13	SHEET NO. 11
CONTRACT NO. 64R33			ILLINOIS FED. AID PROJECT	



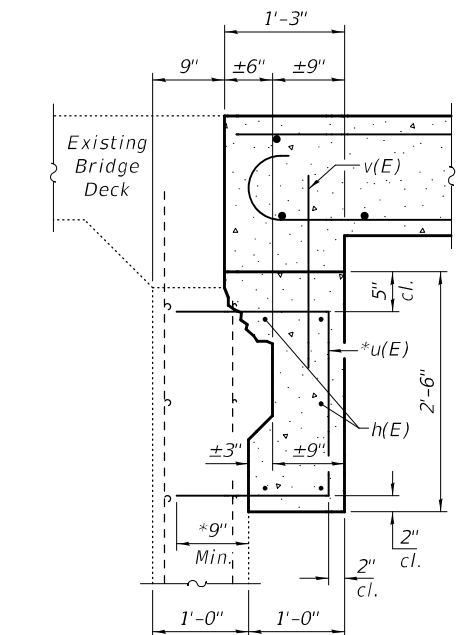
APPROACH REPLACEMENT PLAN
 East Approach shown, West Approach similar by rotation except as noted.



SECTION THRU APPROACH SLAB



* u(E) bars to be epoxy grouted into 9" min. holes according to Article 584 of the Std. Specs.



CORBEL DETAIL
 (East Abutment Only)

BILL OF MATERIAL

Bar	No.	Size	Length	Shape
a(E)	86	#9	17'-0"	U
a1(E)	86	#9	22'-0"	U
a2(E)	86	#5	19'-8"	—
b(E)	24	#5	22'-2"	—
b1(E)	84	#4	22'-2"	—
h(E)	10	#5	22'-2"	—
u(E)	46	#5	5'-3"	□
v(E)	46	#5	2'-9"	—
Apr. Slab Removal			Sq. Yd.	188
Concrete Superstructure			Cu. Yd.	79.8
Concrete Structures			Cu. Yd.	4.2
Reinforcement Bars, Epoxy Coated			Pound	16080
Bar Splicers			Each	59
Protective Coat			Sq. Yd.	-

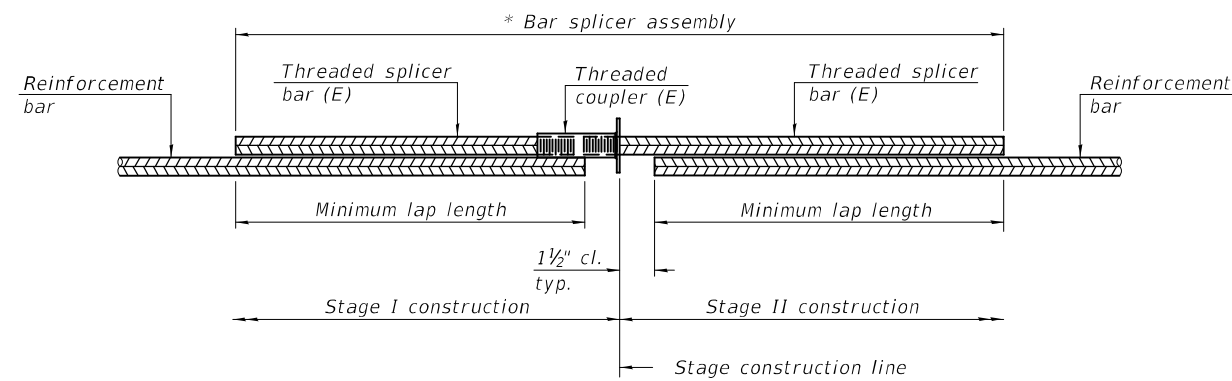
DESIGNED - SMR	EXAMINED - <i>Timothy A. Daulton</i>	DATE - JANUARY 21, 2022
CHECKED - VHV	ENGINEER OF STRUCTURAL SERVICES	
DRAWN - STEFFEN	PASSED - <i>Carl R. Ruyter</i>	REVISED -
CHECKED - SMR VHV	ENGINEER OF BRIDGES AND STRUCTURES	REVISED -

STATE OF ILLINOIS
DEPARTMENT OF TRANSPORTATION

REPAIR DETAILS
SN 071-0015

SHEET NO. 2 OF 3 SHEETS

F.A.P. RTE.	SECTION	COUNTY	TOTAL SHEETS	SHEET NO.
17	(102BR)RS	OGLE	13	12
CONTRACT NO. 64R33			ILLINOIS FED. AID PROJECT	

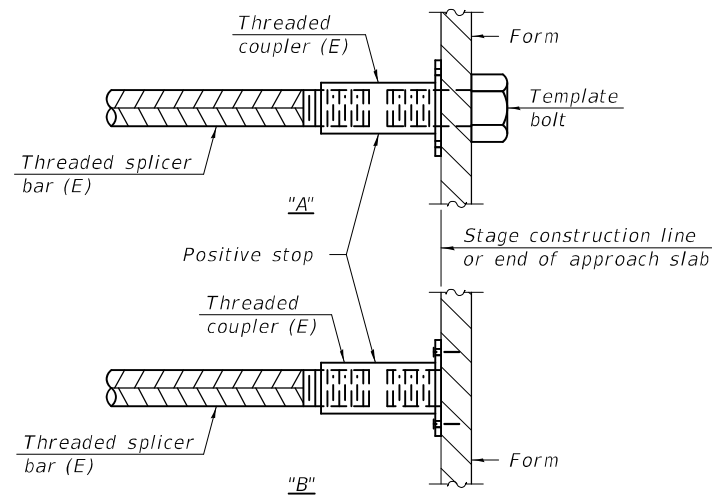


STANDARD BAR SPLICER ASSEMBLY PLAN
 (All components shall be provided from one supplier)

Threaded splicer bar length = min. lap length + 1 1/2" + thread length

* Epoxy not required on Bar Splicer Assembly components used in conjunction with black bars.

Location	Bar size	No. assemblies required	Minimum lap length
Appr. Slab (Top)	#4	12	2'-8"
Appr. Slab (Bott.)	#5	42	3'-0"
E. Abut. Corbel	#5	5	3'-4"

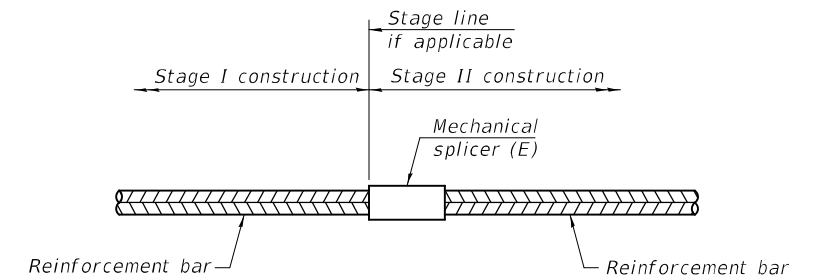


INSTALLATION AND SETTING METHODS

"A" : Set bar splicer assembly by means of a template bolt.

"B" : Set bar splicer assembly by nailing to wood forms or cementing to steel forms.

(E) : Indicates epoxy coating.



STANDARD MECHANICAL SPLICER

Location	Bar size	No. assemblies required

Notes:

Splicer bars shall be deformed with threaded ends and have a minimum 60 ksi yield strength.

All reinforcement shall be lapped and tied to the splicer bars.

Bar splicer assemblies shall be epoxy coated according to the requirements for reinforcement bars. See Section 508 of the Standard Specifications.

See approved list of bar splicer assemblies and mechanical splicers for alternatives.

BSD-1

1-1-2020

DESIGNED - SMR	EXAMINED	DATE - JANUARY 21, 2022
CHECKED - VHV	<i>Timothy A. Anderson</i> ENGINEER OF STRUCTURAL SERVICES	REVISED -
DRAWN - STEFFEN	PASSED	REVISED -
CHECKED - SMR VHV	<i>Carl Rieger</i> ENGINEER OF BRIDGES AND STRUCTURES	

STATE OF ILLINOIS
 DEPARTMENT OF TRANSPORTATION

BAR SPLICER ASSEMBLY AND MECHANICAL SPLICER DETAILS
 SN 071-0015

SHEET NO. 3 OF 3 SHEETS

F.A.P. RTE.	SECTION	COUNTY	TOTAL SHEETS	SHEET NO.
17	(102BR)RS	OGLE	13	13
CONTRACT NO. 64R33				
ILLINOIS		FED. AID PROJECT		