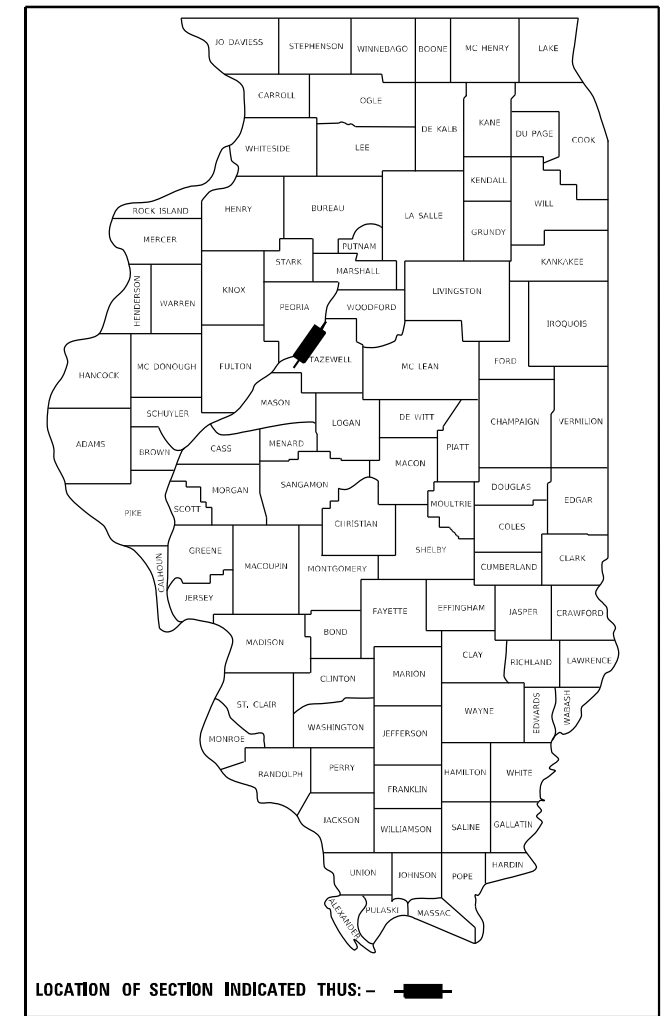


STATE OF ILLINOIS
DEPARTMENT OF TRANSPORTATION

F.A.P. RTE.	SECTION	COUNTY	TOTAL SHEETS	SHEET NO.
669	11-DR	TAZEWELL	24	1
		ILLINOIS	CONTRACT NO. 68F32	

D-94-022-20



PROJECT DESCRIPTION: THE SCOPE OF THIS PROJECT INCLUDES THE CONSTRUCTION OF A SERIES OF DRAINAGE ITEMS, DITCH GRADING, AND THE PLACEMENT OF RIP-RAP.

STATE OF ILLINOIS
DEPARTMENT OF TRANSPORTATION

SUBMITTED December 23, 20 21

Kensil A. Garnett
REGIONAL ENGINEER

February 4, 2022
[Signature]
ENGINEER OF DESIGN AND SURVEILLANCE

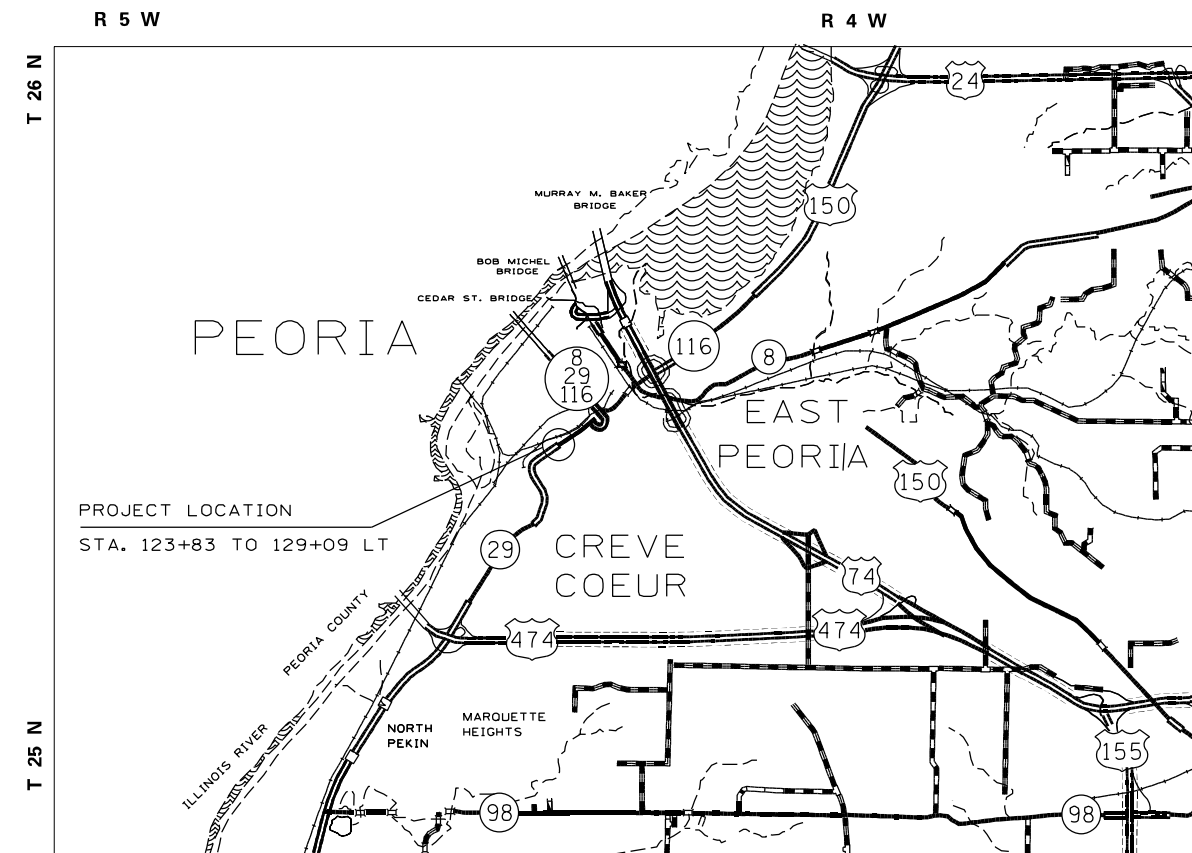
February 4, 2022
Stephen M. Smith
DIRECTOR OF HIGHWAYS PROJECT IMPLEMENTATION

PRINTED BY THE AUTHORITY
OF THE STATE OF ILLINOIS

PROPOSED
HIGHWAY PLANS

FAP 669 (US 24/IL 29)
SECTION 11-DR
CONTRACT MAINTENANCE
DRAINAGE IMPROVEMENT
TAZEWELL COUNTY

C-94-030-20



GROSS LENGTH = 526 FT. = 0.100 MILE
NET LENGTH = 158 FT. = 0.030 MILE

INDEX OF SHEETS

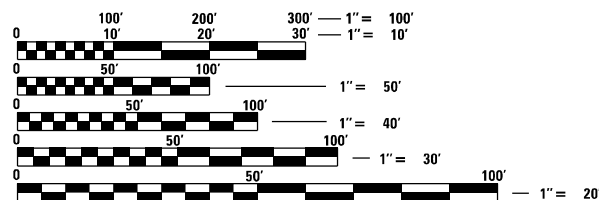
1. COVER SHEET
2. GENERAL AND PROJECT SPECIFIC NOTES
- 3-4. SUMMARY OF QUANTITIES
5. TYPICALS
6. SCHEDULE OF QUANTITIES
- 7-8. SURVEY TIES & BENCHMARKS
- 9-10. STATUS OF UTILITIES
11. LINE DIAGRAM
12. EXISTING AND REMOVAL
- 13-14. PROPOSED TRAFFIC CONTROL
15. EROSION AND SEDIMENT CONTROL
16. DRAINAGE AND UTILITIES
17. RIGHT OF WAY PLAN
- 18-19. STRUCTURAL DETAILS
- 20-21. DISTRICT STANDARDS
- 22-24. CROSS SECTIONS

LIST OF STANDARDS

- 000001-08
- 001001-02
- 280001-07
- 701602-10
- 701901-08
- 701101-05
- 701106-02
- 701427-05

DESIGN DESIGNATION (IL 29)

OTHER PRINCIPAL ARTERIAL
2017 ADT = 22,400
MU = 400
SU = 1425



FULL SIZE PLANS HAVE BEEN PREPARED USING STANDARD ENGINEERING SCALES, REDUCED SIZED PLANS WILL NOT CONFORM TO STANDARD SCALES. IN MAKING MEASUREMENTS ON REDUCED PLANS, THE ABOVE SCALES MAY BE USED.

J.U.L.I.E.
JOINT UTILITY LOCATION INFORMATION FOR EXCAVATORS
1-800-892-0123
OR 811

PROJECT ENGINEER MARK OTTEN
PROJECT MANAGER JOSH JOCHUMS
CATALOG NO. 036003-00D
CONTRACT NO. 68F32

PLAN ELEVATIONS – U.S.G.S. MEAN SEA LEVEL DATUM

Use one of the following two options.

1. All elevations shown on the plans are established from U.S.G.S. mean sea level datum.
2. All elevations shown refer to U.S.G.S. datum at mean sea level unless otherwise noted.

SIGNING

Sign locations may vary from the stations shown on the plans in accordance with directions from the Engineer at the time of construction. Sign locations may be adjusted in the field to avoid any found utilities.

All wood post locations shall be verified with the Bureau of Operations, Traffic Section, before installation.

ORDERING LENGTH CONFIRMATION – DRAINAGE ITEMS

The Contractor shall consult with the Engineer in regard to the exact length of the box/pipe culverts, storm sewers, and/or pipe drains required prior to ordering these items.

ADDITIONAL SUPPLEMENTAL TRAFFIC CONTROL

The Department reserves the right at any time to add additional Traffic Control Systems or devices within the active contract limits, by means of an additional contract. All terms of Article 105.08 of the Standard Specifications shall be followed by each Contractor.

ENVIRONMENTAL REVIEWS

Prior to the use of any proposed borrow areas, use areas (temporary access roads, detours, run-arounds, etc.) and/or waste areas, the Contractor shall file the required environmental resource request surveys according to Section 107.22 of the Standard Specifications. These surveys are required in order for the Department to conduct cultural and biological resource surveys for the proposed site.

The required environmental resource documentation shall include the following:

- * BDE Form 2289 (Borrow Site Review)
- * BDE Form 2290 (Waste/Use Area Review)
- * A location map showing the size limits and location of the use area
- * Color photographs depicting the use area
- * Borrow Area Entry Agreement form – D4 PI0101

Prior to any waste materials being removed from the construction site the required environmental resource surveys shall be obtained and filed by the Contractor. Excess waste products removed from the construction site shall be disposed of as required in Section 202.03 of the Standard Specifications.

Any protruding metal bars shall be removed prior to the disposal of broken concrete at approved disposal sites.

Please note that a minimum of four weeks shall be allowed for the District to obtain the required waste site environmental clearances and six weeks for the required borrow site environmental clearances.

MODEL Sheet
 FILE NAME: S:\GEN\DR\ATN\Joc\Joc\Design\68F32\US_24_at_Bovine_Split\Construction\Draft for Phase 2 - Drop Box Option (7.12.21).dgn

USER NAME = jochumsjg	DESIGNED -	REVISED -	STATE OF ILLINOIS DEPARTMENT OF TRANSPORTATION	GENERAL NOTES				F.A.P. RTE.	SECTION	COUNTY	TOTAL SHEETS	SHEET NO.
DRAWN -	REVISED -	669						11-DR	TAZEWELL	2	24	
PLOT SCALE = 0.7874' / mm	CHECKED -	REVISED -		CONTRACT NO. 68F32								
PLOT DATE = 12/1/2021	DATE -	REVISED -		SCALE:	SHEET OF SHEETS	STA. TO STA.	ILLINOIS FED. AID PROJECT					

MODEL SHEETS
 FILE NAME: S:\GEN\DRIFT\N. Jack\Josh\Design\68F32-US 24 at Ravine STA\Microstation\Draft_1 for Phase 2 - Drop Box Option 171221.dgn

CODE NO.	ITEM	UNIT	TOTAL QUANTITY	CONSTRUCTION CODE	
				URBAN	0004
				DRAIN. IMPROV.	
				100% STATE	
20200100	EARTH EXCAVATION	CU YD	55	55	
21101615	TOPSOIL FURNISH & PLACE, 4"	SQ YD	157	157	
25000210	SEEDING CLASS 2A	ACRE	0.25	0.25	
25000400	NITROGEN FERTILIZER NUTRIENT	POUND	3	3	
25000500	PHOSPHORUS FERTILIZER NUTRIENT	POUND	3	3	
25000600	POTASSIUM FERTILIZER NUTRIENT	POUND	3	3	
25100630	EROSION CONTROL BLANKET	SQ YD	157	157	
28100203	STONE RIPRAP, CLASS A2	TON	27	27	
28200200	FILTER FABRIC	SQ YD	81	81	
44004000	PAVED DITCH REMOVAL	FOOT	128	128	
54248510	CONCRETE COLLAR	CU YD	1	1	
542A1081	PIPE CULVERTS, CLASS A, TYPE 2, 36"	FOOT	6	6	
60905305	BOX CULVERTS TO BE CLEANED	FOOT	130	130	
67100100	MOBILIZATION	L SUM	1	1	
70102632	TRAFFIC CONTROL AND PROTECTION, STANDARD 701602	L SUM	1	1	

USER NAME = jochumsjg	DESIGNED -	REVISED -
	DRAWN -	REVISED -
PLOT SCALE = 0.7874' / mm	CHECKED -	REVISED -
PLOT DATE = 12/9/2021	DATE -	REVISED -

**STATE OF ILLINOIS
 DEPARTMENT OF TRANSPORTATION**

SUMMARY OF QUANTITIES

F.A.P. RTE.	SECTION	COUNTY	TOTAL SHEETS	SHEET NO.
669	11-DR	TAZEWELL	24	3
			CONTRACT NO. 68F32	
ILLINOIS FED. AID PROJECT				

MODEL SHEETS
 FILE NAME: S:\GEN\DRIFT\N. Jack\Josh\Design\68F32-UB 24 at Ravine St\Microstation\Drift 1 for Phase 2 -Drop Box Option 17.12.21.dgn

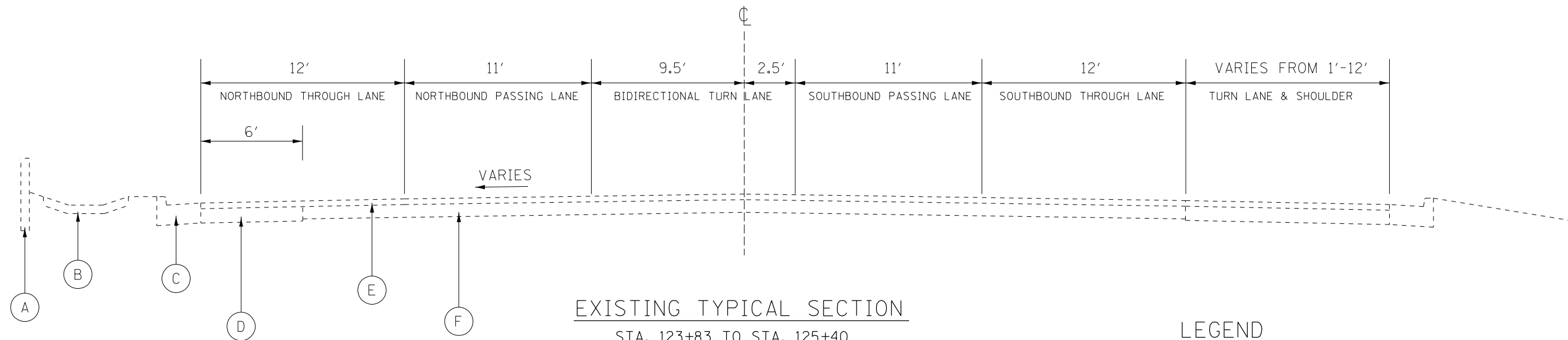
CODE NO.	ITEM	UNIT	TOTAL QUANTITY	CONSTRUCTION CODE	
				URBAN	0004
				DRAIN. IMPROV.	
				100% STATE	
70103815	TRAFFIC CONTROL SURVEILLANCE	CAL DA	15	15	
X0326474	DROP STRUCTURE NUMBER 1	EACH	1	1	
X1200050	BOX CULVERT REMOVAL	FOOT	6.4	6.4	
Z0013798	CONSTRUCTION LAYOUT	L SUM	1	1	
Z0018700	DRAINAGE STRUCTURE TO BE REMOVED	EACH	1	1	

USER NAME = jochums_jg	DESIGNED -	REVISED -
PLOT SCALE = 0.7874 ' / mm	DRAWN -	REVISED -
PLOT DATE = 12/9/2021	CHECKED -	REVISED -
	DATE -	REVISED -

**STATE OF ILLINOIS
DEPARTMENT OF TRANSPORTATION**

SUMMARY OF QUANTITIES

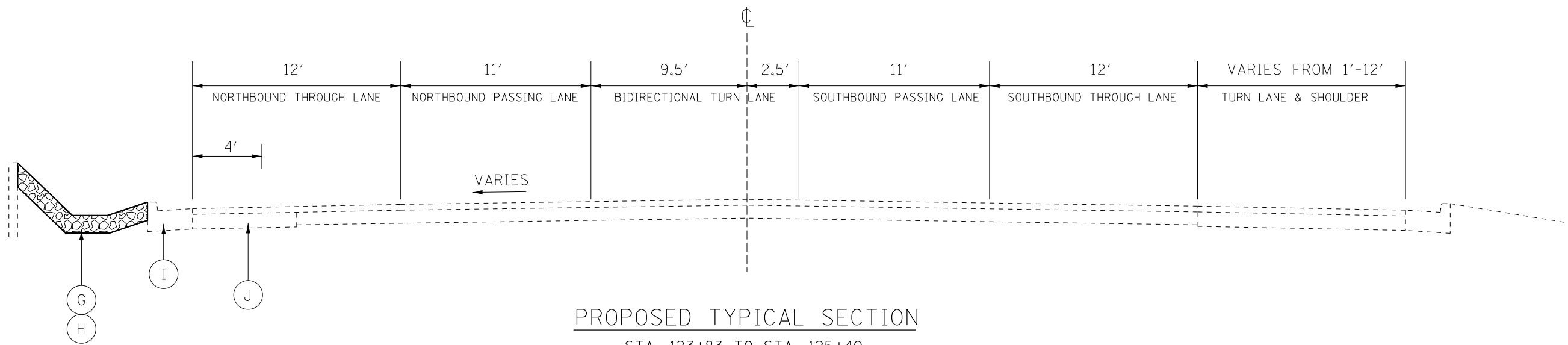
F.A.P. RTE.	SECTION	COUNTY	TOTAL SHEETS	SHEET NO.
669	11-DR	TAZEWELL	24	4
CONTRACT NO. 68F32				
ILLINOIS FED. AID PROJECT				



EXISTING TYPICAL SECTION
STA. 123+83 TO STA. 125+40

LEGEND

- (A) EXISTING RETAINING WALL
- (B) EXISTING CONCRETE PAVED DITCH
- (C) EXISTING COMBINATION CONCRETE CURB & GUTTER, TYPE B-6.24
- (D) EXISTING PCC BASE COURSE WIDENING, 10"
- (E) EXISTING HMA OVERLAY, 4"
- (F) EXISTING PCC BASE COURSE, 9"



PROPOSED TYPICAL SECTION
STA. 123+83 TO STA. 125+40

LEGEND

- (G) PROPOSED EARTH EXCAVATION
- (H) PROPOSED STONE RIPRAP, CLASS A2 OR EROSION CONTROL BLANKET

MODEL SHEET
FILE NAME: S:\GEN\DRIFTN\Bck\A\InDesign\68F32-US_24_at_Ravine_Sr\Highway\Draft for Phase 2 - Drop Box_Caption (7.12.21).dgn

USER NAME = jochumsjg	DESIGNED -	REVISED -
	DRAWN -	REVISED -
PLOT SCALE = 0.7874' / mm	CHECKED -	REVISED -
PLOT DATE = 12/1/2021	DATE -	REVISED -

**STATE OF ILLINOIS
DEPARTMENT OF TRANSPORTATION**

**TYPICAL SECTIONS
EXISTING & PROPOSED**

SCALE: SHEET OF SHEETS STA. TO STA.

F.A.P. RTE.	SECTION	COUNTY	TOTAL SHEETS	SHEET NO.
669	11-DR	TAZEWELL	24	5
CONTRACT NO. 68F32				
ILLINOIS FED. AID PROJECT				

EARTHWORK				
LOCATION	20200100	FOR INFORMATION ONLY		
	EARTH EXCAVATION (CUT)	ADJUSTED EARTH EXCAVATION (ADJ. CUT)	EMBANKMENT (FILL)	WASTE
	CY	CY	CY	CY
STA. 123+83 TO STA. 125+41 LT	55	44	5	39
TOTAL	55	44	5	39

NOTE: ADJUSTED EARTH EXCAVATION CALCULATED ASSUMING A 20% SHRINKAGE FACTOR. THE QUANTITY CALCULATED FOR WASTE IS BASED ON THE ADJUSTED EARTH EXCAVATION QUANTITY.

TRAFFIC CONTROL AND PROTECTION, STANDARD 701602	
LOCATION	70102632
	L SUM
STA. 123+83 TO STA. 129+09 LT	1
TOTAL	1

RIP-RAP SCHEDULE		
LOCATION	28200200	28100203
	FILTER FABRIC	STONE RIPRAP, CLASS A2
	SQ YD	TON
STA. 123+83 TO 124+34 LT	81	27
TOTAL	81	27

MOBILIZATION	
LOCATION	67100100
	L SUM
JOBSITE	1
TOTAL	1

LANDSCAPING								
STA.	TO	STA.	AREA SF	25000210	25000400	25000500	25000600	25100630
				SEEDING, CLASS 2A	NITROGEN FERTILIZER NUTRIENT	PHOSPHORUS FERTILIZER NUTRIENT	POTASSIUM FERTILIZER NUTRIENT	EROSION CONTROL BLANKET
				ACRE	LB	LB	LB	SQ YD
124+34	TO	125+41	1417	0.25	2.9	2.9	2.9	157
TOTAL				0.25	3	3	3	157

CONSTRUCTION LAYOUT	
LOCATION	Z0013798
	L SUM
JOBSITE	1
TOTAL	1

TRAFFIC CONTROL SURVEILLANCE	
LOCATION	70103815
	CAL DA
JOBSITE	15
TOTAL	15

TOPSOIL FURNISH AND PLACE	
21101615	
LOCATION	SQ YD
STA. 124+34 TO 125+41	157
TOTAL	157

DRAINAGE SCHEDULE					
LOCATION	542A1081	54248510	X1200050	Z0018700	60905305
	PIPE CULVERTS, CLASS A, TYPE 2 36"	CONCRETE COLLAR	BOX CULVERT REMOVAL	DRAINAGE STRUCTURE TO BE REMOVED	BOX CULVERTS TO BE CLEANED
	FOOT	CU YD	FOOT	EACH	FOOT
STA. 124+24, 39' LT TO 47' LT	6.0				
STA. 124+24, 47' LT		1.0			
STA. 124+24, 40' LT TO 46' LT			6.4		
STA. 124+29, 47' LT				1	
STA. 123+57, 60' RT TO STA. 124+24, 40.2' LT (4'X5' BOX CULVERT)					130
TOTAL	6.0	1.0	6.4	1	130

DROP STRUCTURE NUMBER 1	
LOCATION	X0326474
	EACH
STA. 124+24, 40.95' LT	1
TOTAL	1

PAVED DITCH REMOVAL	
44004000	
LOCATION	FOOT
STA. 123+86 TO STA. 124+24 LT	38
STA. 124+32 TO STA. 125+22 LT	90
TOTAL	128

MODEL SHEET: FILE NAME: S:\GEN\DR\ATN_132\4\03\Design\68F32\US_24_at_Ravine_Strip\Construction\Draft for Phase 2 - Drop Box_Carton (7.12.21).dgn

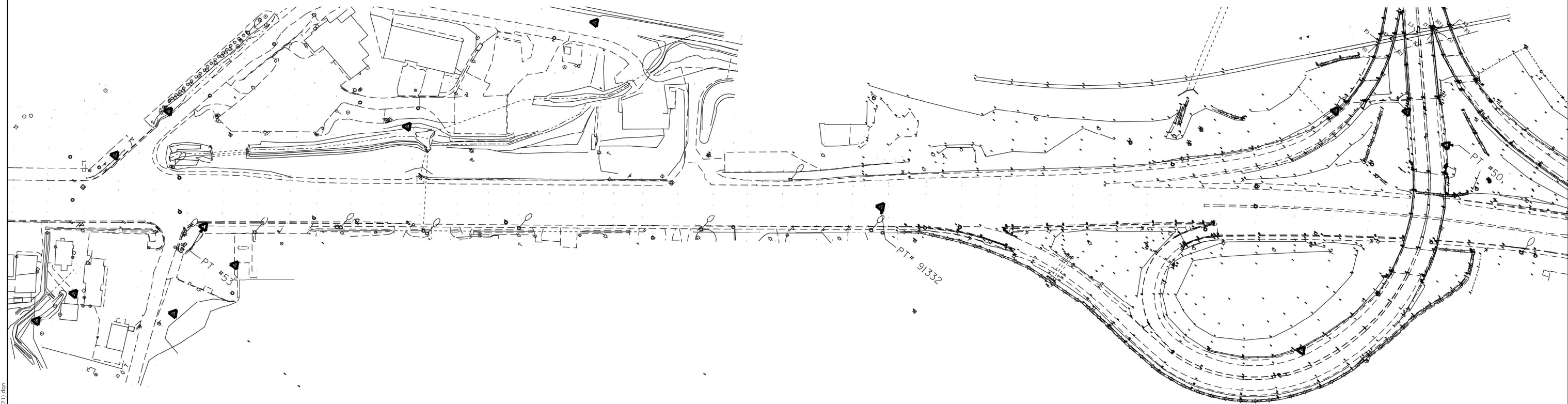
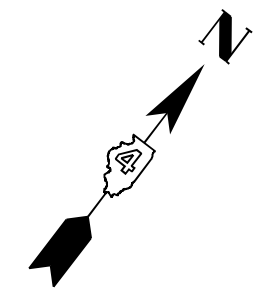
USER NAME = jochumsjg	DESIGNED -	REVISED -
	DRAWN -	REVISED -
PLOT SCALE = 0.7874' / mm	CHECKED -	REVISED -
PLOT DATE = 12/9/2021	DATE -	REVISED -

**STATE OF ILLINOIS
DEPARTMENT OF TRANSPORTATION**

SCHEDULE OF QUANTITIES

SCALE: SHEET OF SHEETS STA. TO STA.

F.A.P RTE.	SECTION	COUNTY	TOTAL SHEETS	SHEET NO.
669	11-DR	TAZEWELL	24	6
CONTRACT NO. 68F32				
ILLINOIS FED. AID PROJECT				



MODEL SHEET
 FILE NAME: S:\GEN\DRATN\Joc\Joc\Design\68F32\US_24_at_Bovine_Split\Construction\Draft for Phase 2 - Drop Box_Caption (7.12.21).dgn

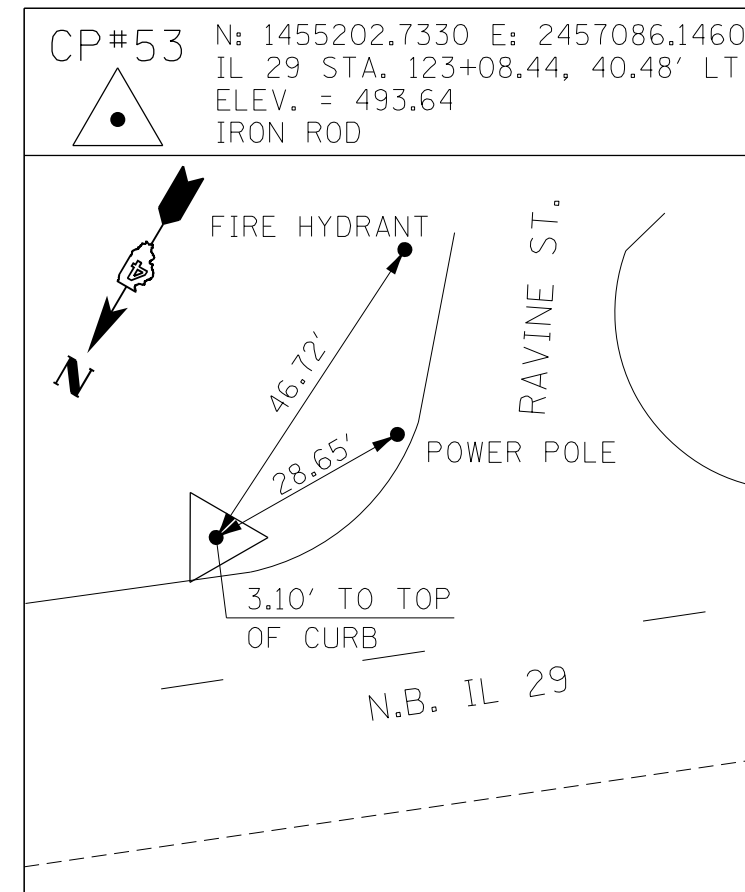
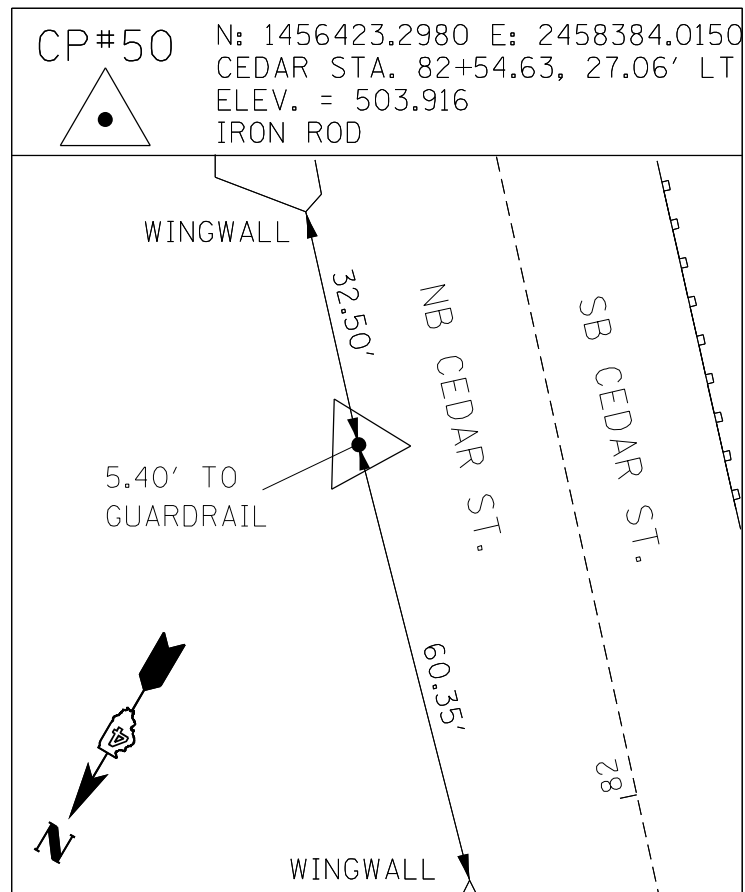
USER NAME = jochumsjg	DESIGNED -	REVISED -
	DRAWN -	REVISED -
PLOT SCALE = 0.7874' / mm	CHECKED -	REVISED -
PLOT DATE = 12/1/2021	DATE -	REVISED -

STATE OF ILLINOIS
DEPARTMENT OF TRANSPORTATION

ALIGNMENT, TIES, & BENCHMARKS

SCALE: SHEET OF SHEETS STA. TO STA.

F.A.P. RTE.	SECTION	COUNTY	TOTAL SHEETS	SHEET NO.
669	11-DR	TAZEWELL	24	7
CONTRACT NO. 68F32				
ILLINOIS FED. AID PROJECT				



MODEL SHEET
 FILE NAME: S:\GEN\DR\11-13\GEN\DR\11-13\11-13-24.dwg
 PROJECT: 11-13-24.dwg
 DATE: 12/1/2021

USER NAME = jochumsjg	DESIGNED -	REVISED -
	DRAWN -	REVISED -
PLOT SCALE = 0.7874' / mm	CHECKED -	REVISED -
PLOT DATE = 12/1/2021	DATE -	REVISED -

STATE OF ILLINOIS
 DEPARTMENT OF TRANSPORTATION

ALIGNMENT, TIES, & BENCHMARKS

SCALE: SHEET OF SHEETS STA. TO STA.

F.A.P. RTE.	SECTION	COUNTY	TOTAL SHEETS	SHEET NO.
669	11-DR	TAZEWELL	24	8
CONTRACT NO. 68F32				
ILLINOIS FED. AID PROJECT				



Status of Utili

Name of Utility Company

Ameren Gas

Route FAP 669 (US 24/IL 29)
Section 11-DR
County Tazewell
Contract No. 68F32
Catalog No. 036003-00D

Table with 6 columns: Route, Offset, Location, Type of Utility, Type of Conflict, Disposition. Row 1: US 24, Lt 58', 124+25 to 124+55, 2" PE gas line, Excavation for concrete collar, Relocate.

NOTE: Please check all your facilities within the construction limits of this project.

Printed 8/16/2021

D4 PD0100 (Rev. 02/24/10)



Status of Utili

Name of Utility Company

I3 Broadband

Route FAP 669 (US 24/IL 29)
Section 11-DR
County Tazewell
Contract No. 68F32
Catalog No. 036003-00D

Table with 6 columns: Route, Offset, Location, Type of Utility, Type of Conflict, Disposition. Row 1: US 24, Lt 58', 124+25 to 124+55, Buried Fiber, Excavation for concrete collar, Relocate.

NOTE: Please check all your facilities within the construction limits of this project.

Printed 8/16/2021

D4 PD0100 (Rev. 02/24/10)

MODEL Sheet: S:\GEN\DR\ATN..._Incl\Incl\Design\68F32-US_24.at_Routine_SplitConstruction\Draft for Phase 2 -Drop Box_Carbon (7.12.21).dgn

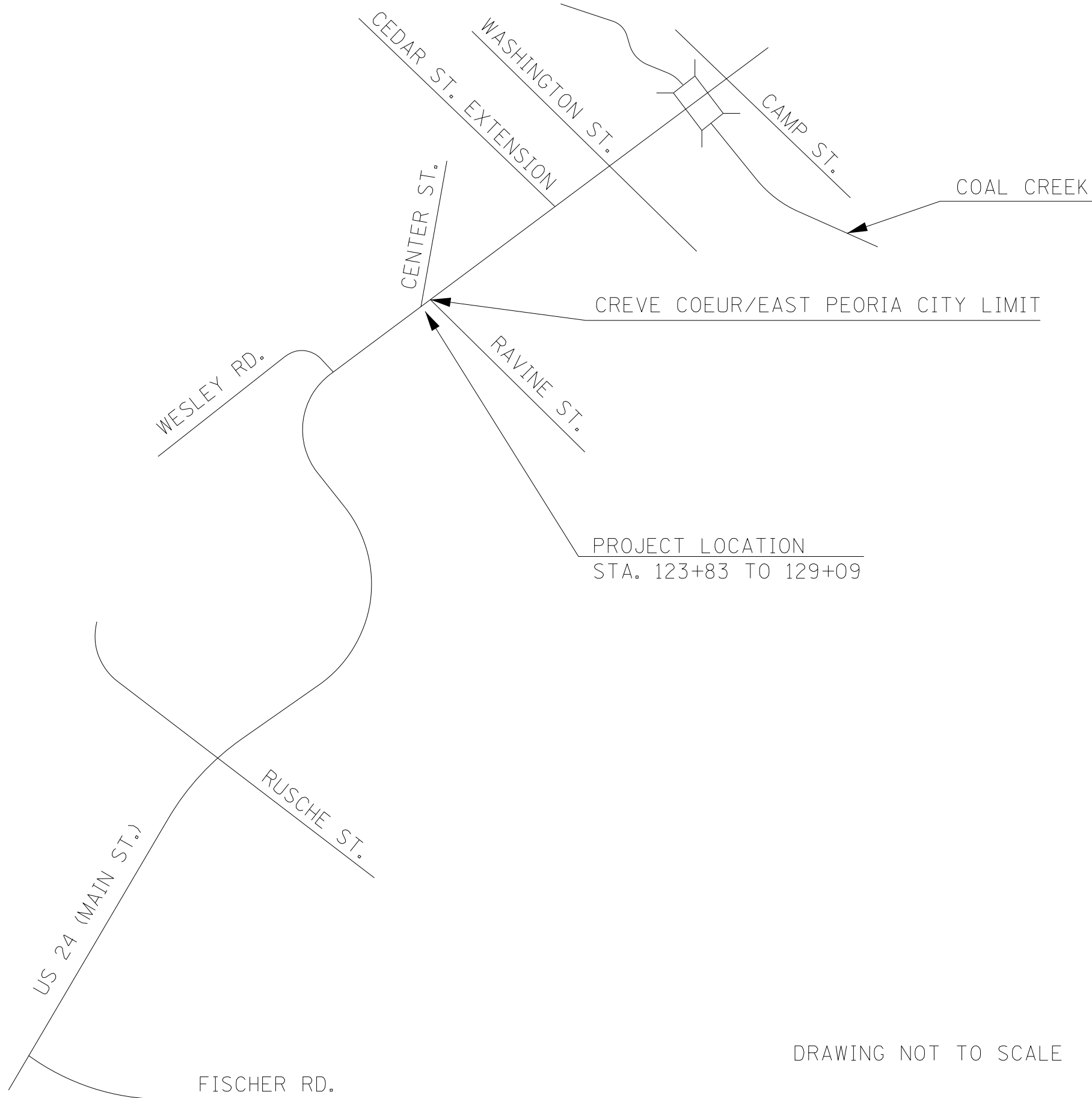
Table with 4 columns: USER NAME, DESIGNED, DRAWN, PLOT SCALE, PLOT DATE, CHECKED, DATE, REVISED.

STATE OF ILLINOIS DEPARTMENT OF TRANSPORTATION

STATUS OF UTILITIES

SCALE: SHEET OF SHEETS STA. TO STA.

Table with 5 columns: F.A.P. RTE., SECTION, COUNTY, TOTAL SHEETS, SHEET NO. Values: 669, 11-DR, TAZEWELL, 24, 10. CONTRACT NO. 68F32. ILLINOIS FED. AID PROJECT



DRAWING NOT TO SCALE

MODEL SHEET
FILE NAME: S:\GEN\DRFTN_136\106\Design\68F32-US_24_at_Ravine_S\116\cross\116\Draft for Phase 2 - Drop Box_Caption (7.12.21).dgn

USER NAME = jochumsjg	DESIGNED -	REVISED -
	DRAWN -	REVISED -
PLOT SCALE = 0.7874' / mm	CHECKED -	REVISED -
PLOT DATE = 12/1/2021	DATE -	REVISED -

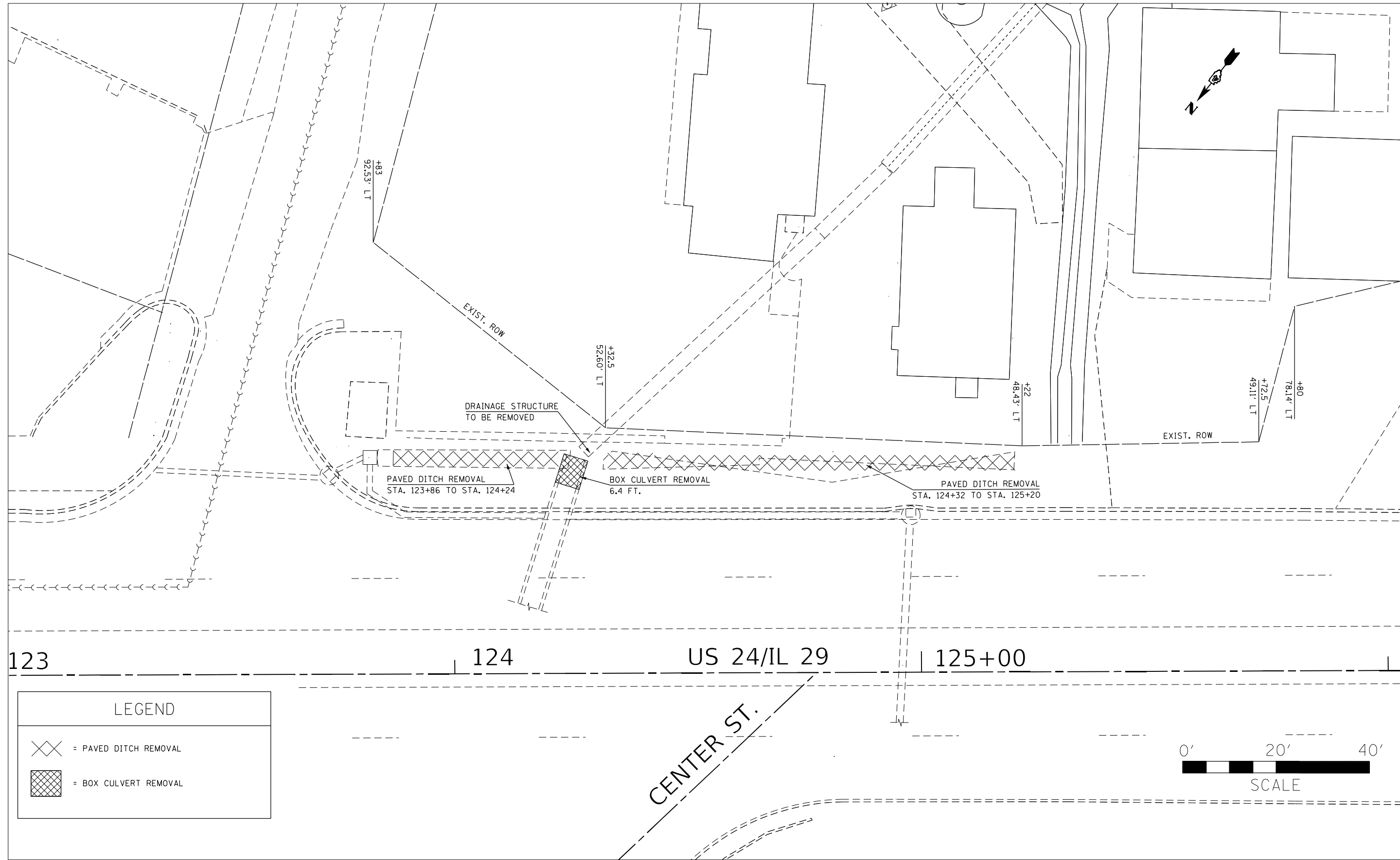
**STATE OF ILLINOIS
DEPARTMENT OF TRANSPORTATION**

LINE DIAGRAM


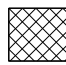
SCALE: SHEET OF SHEETS STA. TO STA.

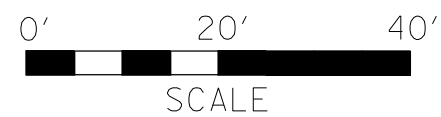
F.A.P. RTE.	SECTION	COUNTY	TOTAL SHEETS	SHEET NO.
669	11-DR	TAZEWELL	24	11
CONTRACT NO. 68F32				
ILLINOIS FED. AID PROJECT				

MODEL SHEET
 FILE NAME: S:\GEN\DRIFTN\Boc\A\Boc\Design\68F32\US_24_at_Bovine_Sr\Hicross\Station\Draft for Phase 2 - Drop Box\Boc\Carton (7.12.21).dgn



LEGEND

 = PAVED DITCH REMOVAL
 = BOX CULVERT REMOVAL



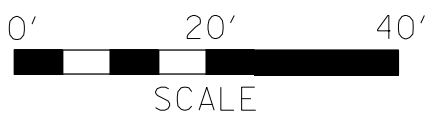
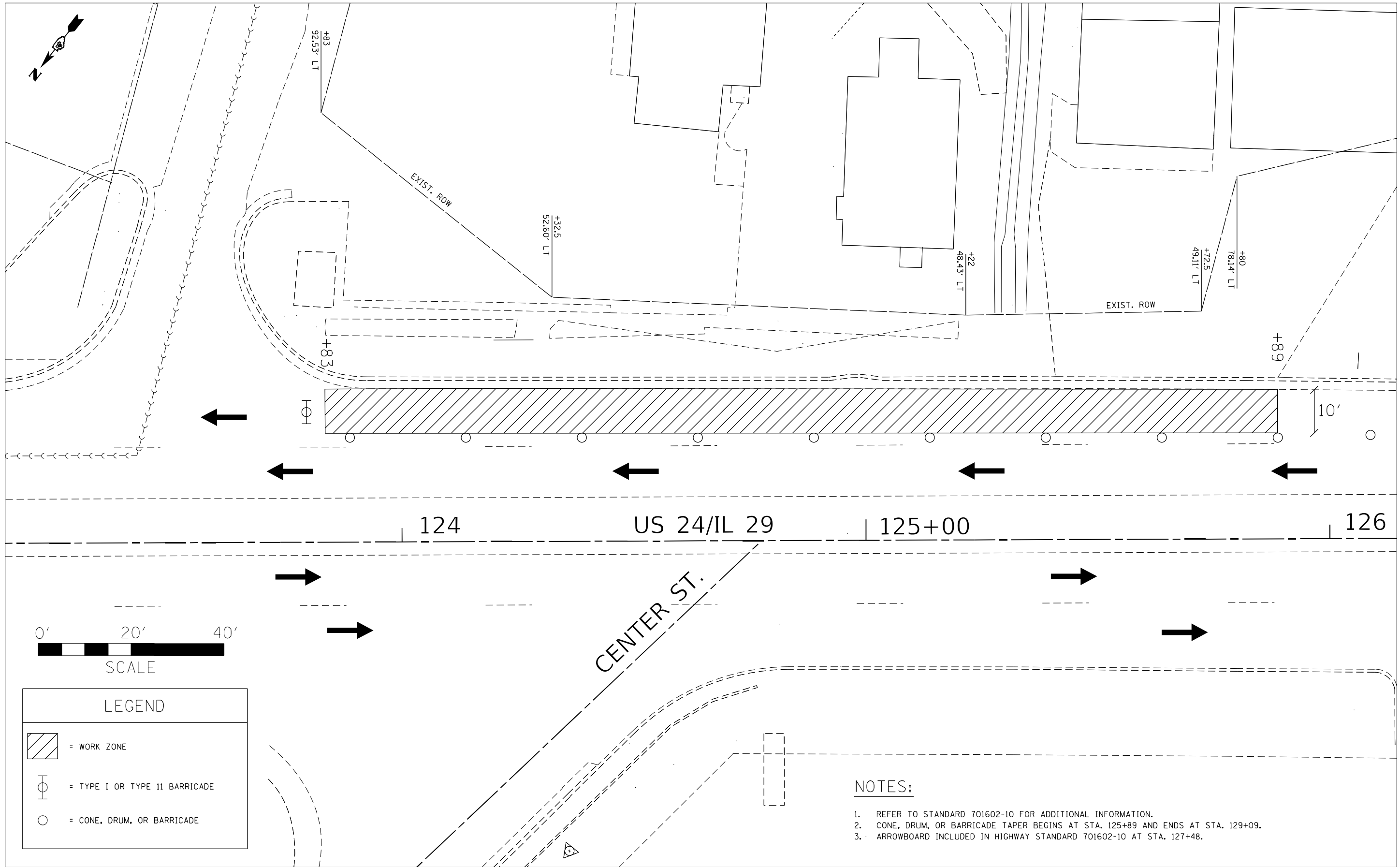
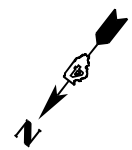
USER NAME = jochumsjg	DESIGNED -	REVISED -
PLOT SCALE = 0.7874' / mm	DRAWN -	REVISED -
PLOT DATE = 12/1/2021	CHECKED -	REVISED -
	DATE -	REVISED -

**STATE OF ILLINOIS
DEPARTMENT OF TRANSPORTATION**

EXISTING & REMOVAL

SCALE: SHEET OF SHEETS STA. TO STA.

F.A.P. RTE.	SECTION	COUNTY	TOTAL SHEETS	SHEET NO.
669	11-DR	TAZEWELL	24	12
CONTRACT NO. 68F32				
ILLINOIS FED. AID PROJECT				



LEGEND	
	= WORK ZONE
	= TYPE I OR TYPE II BARRICADE
	= CONE, DRUM, OR BARRICADE

NOTES:

1. REFER TO STANDARD 701602-10 FOR ADDITIONAL INFORMATION.
2. CONE, DRUM, OR BARRICADE TAPER BEGINS AT STA. 125+89 AND ENDS AT STA. 129+09.
3. ARROWBOARD INCLUDED IN HIGHWAY STANDARD 701602-10 AT STA. 127+48.

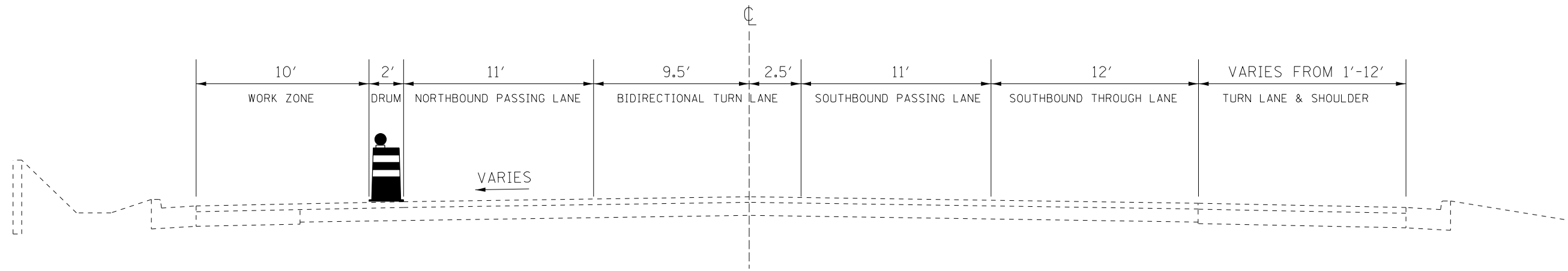
MODEL SHEET
 FILE NAME: S:\GEN\DR\11_12\11_21\11_21.dgn
 MODEL SHEET
 FILE NAME: S:\GEN\DR\11_12\11_21\11_21.dgn

USER NAME = jochumsjg	DESIGNED -	REVISED -
PLOT SCALE = 0.7874' / mm	DRAWN -	REVISED -
PLOT DATE = 12/1/2021	CHECKED -	REVISED -
	DATE -	REVISED -

**STATE OF ILLINOIS
DEPARTMENT OF TRANSPORTATION**

PROPOSED TRAFFIC CONTROL	
SCALE:	SHEET OF SHEETS STA. TO STA.

F.A.P. RTE.	SECTION	COUNTY	TOTAL SHEETS	SHEET NO.
669	11-DR	TAZEWELL	24	13
CONTRACT NO. 68F32				
ILLINOIS FED. AID PROJECT				



PROPOSED TYPICAL SECTION

STA. 123+83 TO STA. 125+89

NOTES:

1. PROPOSED TRAFFIC WILL SHIFT TO ONE LANE UTILIZING HIGHWAY STANDARD 701602.
US 24 WILL DROP TO ONE LANE NORTHBOUND UTILIZING DRUMS, CONES, OR BARRELS.

MODEL SHEET
FILE NAME: S:\GEN\DRAWING\Joc\1020\Design\68F32-US 24 at Ravine SH\Construction\Draft for Phase 2 -Drop Box Option (7.12.21).dgn

USER NAME = jochumsjg	DESIGNED -	REVISED -
	DRAWN -	REVISED -
PLOT SCALE = 0.7874' / mm	CHECKED -	REVISED -
PLOT DATE = 12/1/2021	DATE -	REVISED -

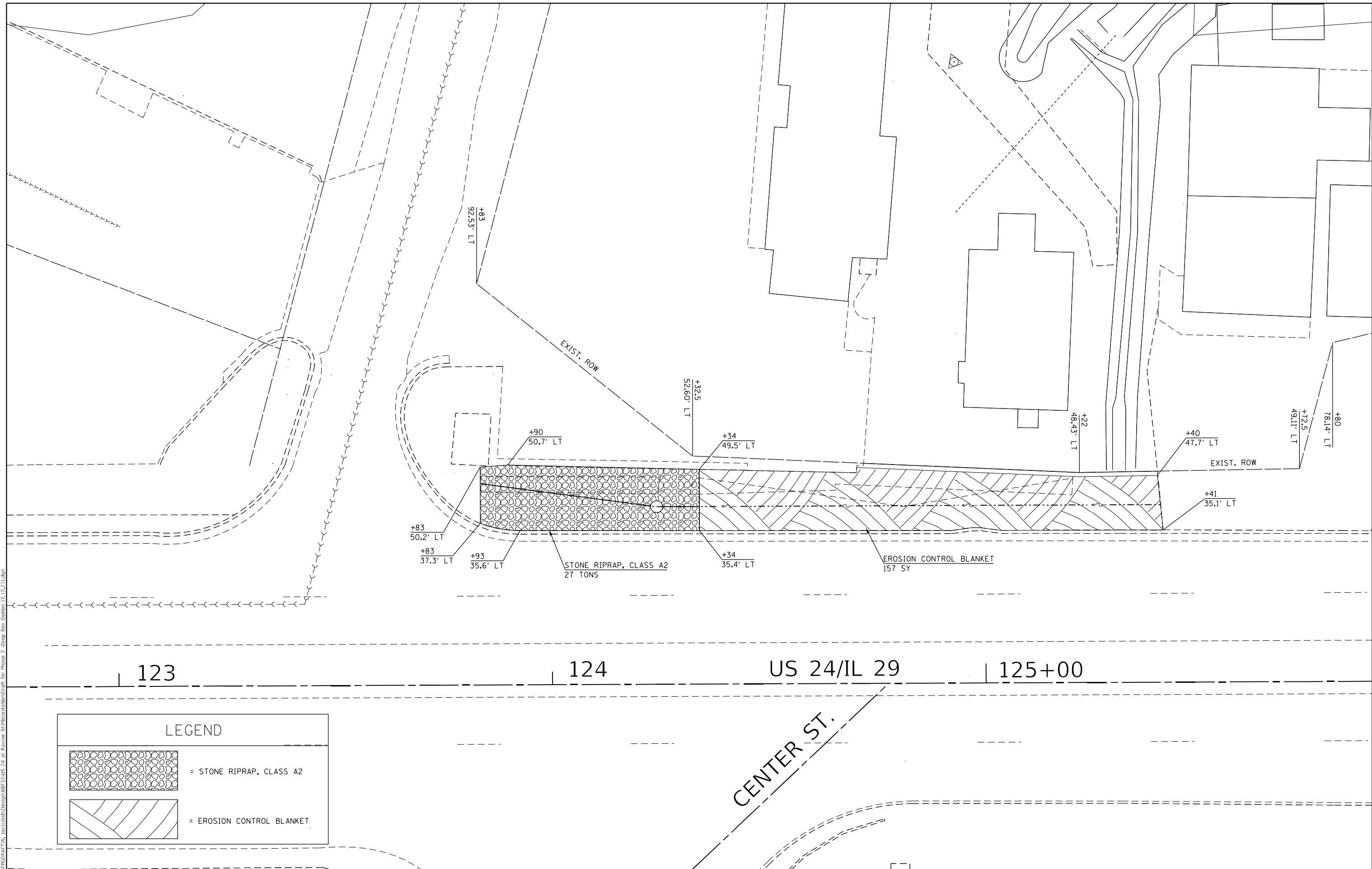
**STATE OF ILLINOIS
DEPARTMENT OF TRANSPORTATION**

PROPOSED TRAFFIC CONTROL


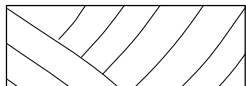
SCALE: SHEET OF SHEETS STA. TO STA.

F.A.P. RTE.	SECTION	COUNTY	TOTAL SHEETS	SHEET NO.
669	11-DR	TAZEWELL	24	14
CONTRACT NO. 68F32				
ILLINOIS FED. AID PROJECT				

MODEL SHEET
 FILE NAME: S:\CEN\DR\ATN_136\136\Design\68F32-US_24_at_Ravine_Sr\Hidrostation\Draft for Phase 2 - Drop Box_Canlon (7.12.21).dgn



LEGEND

	= STONE RIPRAP, CLASS A2
	= EROSION CONTROL BLANKET

123

124

US 24/IL 29

125+00

CENTER ST.

USER NAME = jochumsgj	DESIGNED -	REVISED -	
	DRAWN -	REVISED -	
PLOT SCALE = 0.7874' / mm	CHECKED -	REVISED -	
PLOT DATE = 12/1/2021	DATE -	REVISED -	

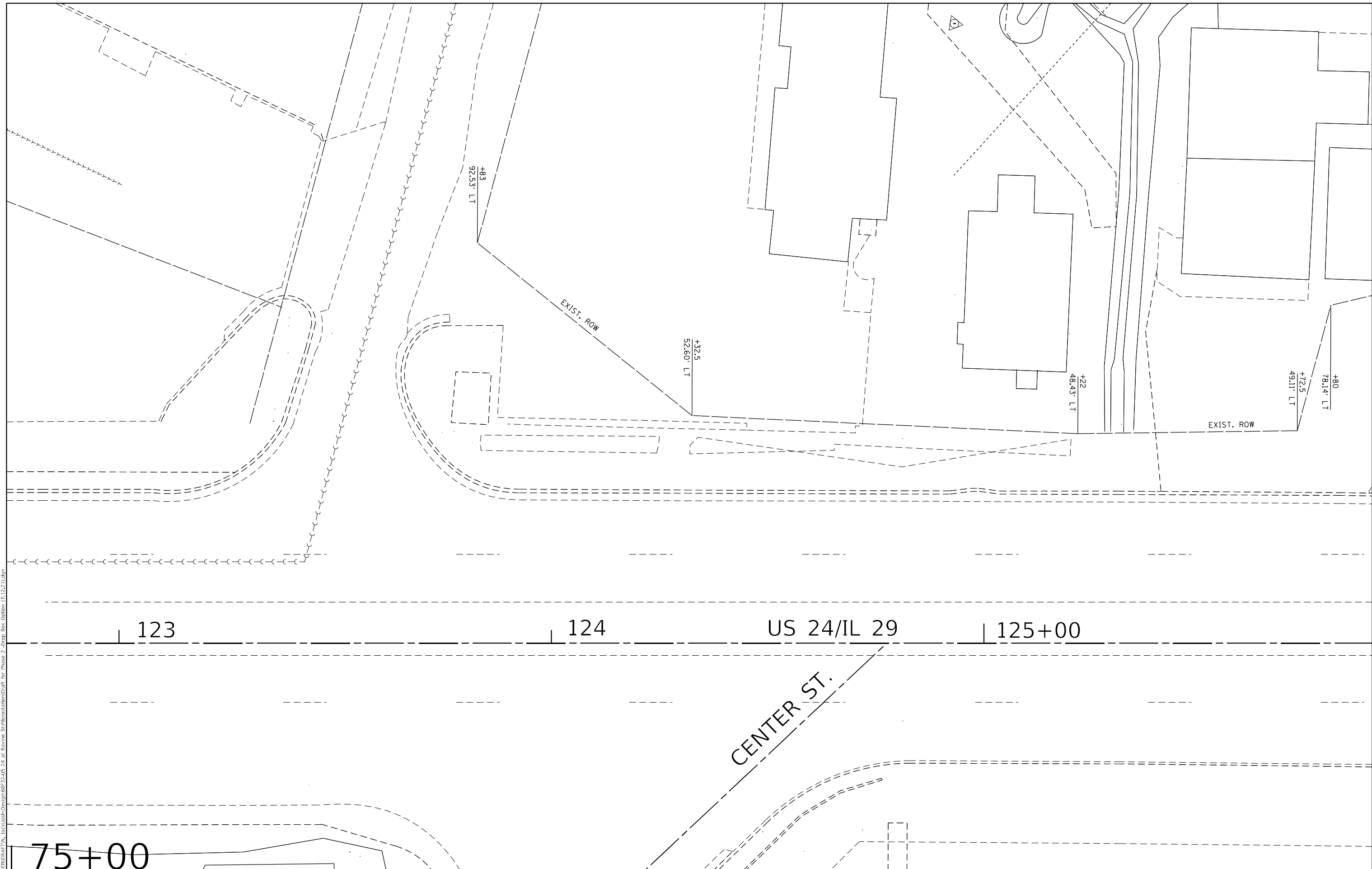
**STATE OF ILLINOIS
DEPARTMENT OF TRANSPORTATION**

EROSION AND SEDIMENT CONTROL

SCALE: SHEET OF SHEETS STA. TO STA.

F.A.P. RTE.	SECTION	COUNTY	TOTAL SHEETS	SHEET NO.
669	11-DR	TAZEWELL	24	15
CONTRACT NO. 68F32				
ILLINOIS FED. AID PROJECT				

MODEL SHEET
 FILE NAME: S:\CENDRAFTM\JocV\JocV\Design\68F32\US_24_at_Ravine_SchM\cross\Draw\for Phase 2_Drop Box_Curton (7.12.21).dgn



123

124

US 24/IL 29

125+00

75+00

CENTER ST.

**STATE OF ILLINOIS
DEPARTMENT OF TRANSPORTATION**

RIGHT-OF-WAY PLAN

SCALE: SHEET OF SHEETS STA. TO STA.

USER NAME = jochumsjg	DESIGNED -	REVISED -
PLOT SCALE = 0.7874' / mm	DRAWN -	REVISED -
PLOT DATE = 12/1/2021	CHECKED -	REVISED -
	DATE -	REVISED -

F.A.P. RTE.	SECTION	COUNTY	TOTAL SHEETS	SHEET NO.
669	11-DR	TAZEWELL	24	17
CONTRACT NO. 68F32				
ILLINOIS FED. AID PROJECT				

INDEX OF SHEETS

1. General Plan & Elevation
2. Drop Structure No. 1 Details

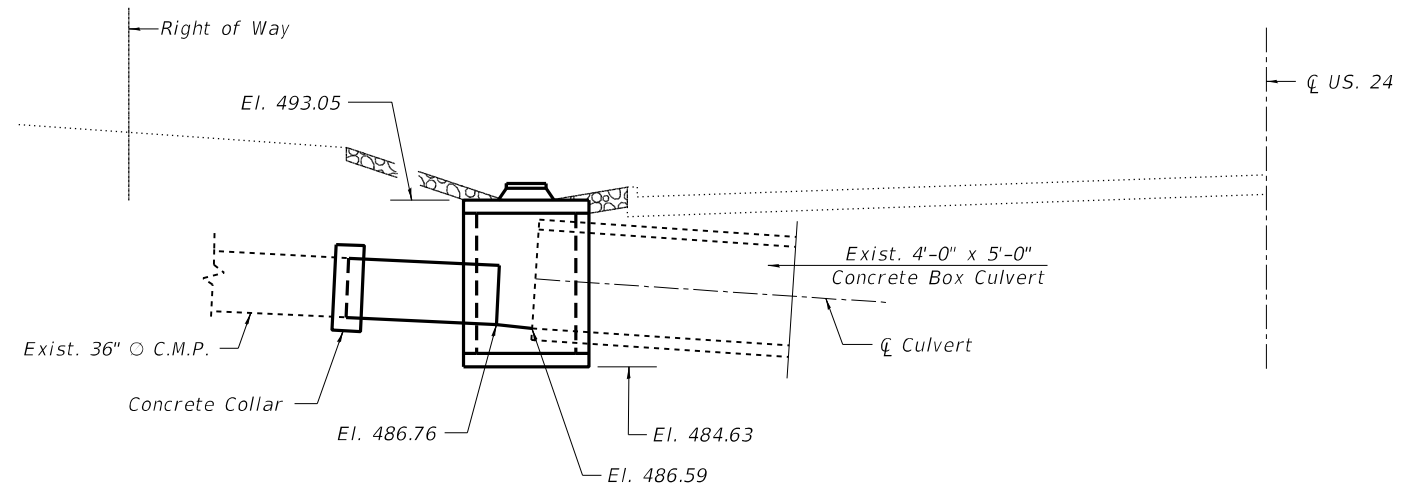
BILL OF MATERIAL

ITEM	UNIT	QUANTITY
Box Culvert Removal	Foot	6.4
Drop Structure No. 1	Each	1

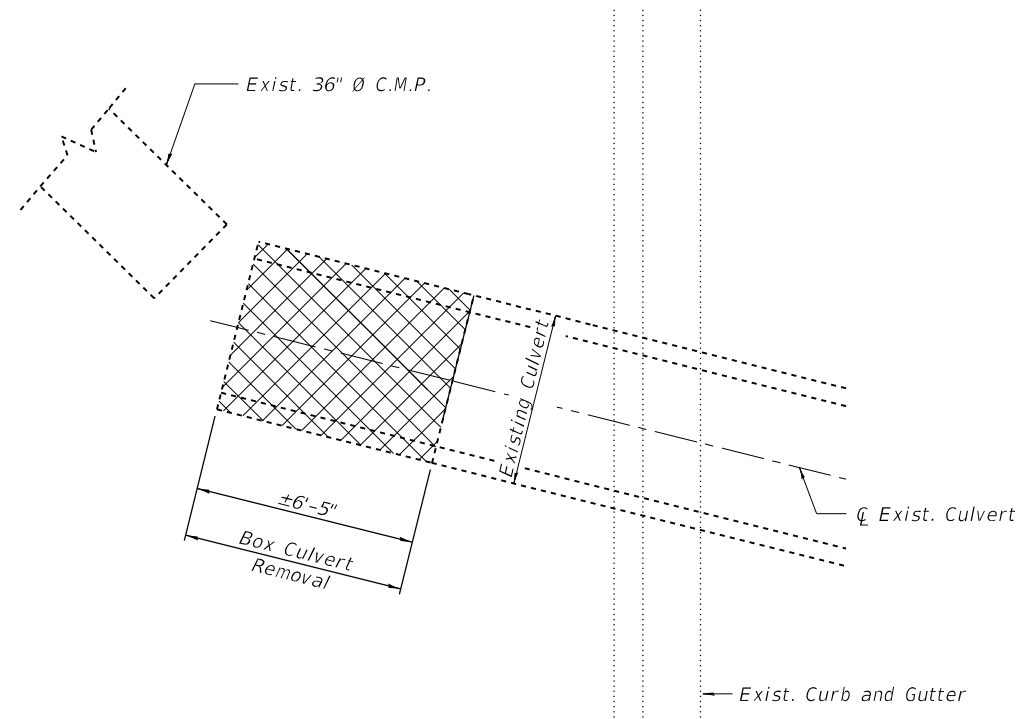
DESIGN STRESSES

$f'_c = 3,500 \text{ psi}$
 $f_y = 60,000 \text{ psi (Reinforcement)}$

Reinforcement bars designated (E) shall be epoxy coated.
 The contractor shall field verify all existing dimensions and details affecting new construction and make necessary approved adjustments prior to construction or ordering materials.

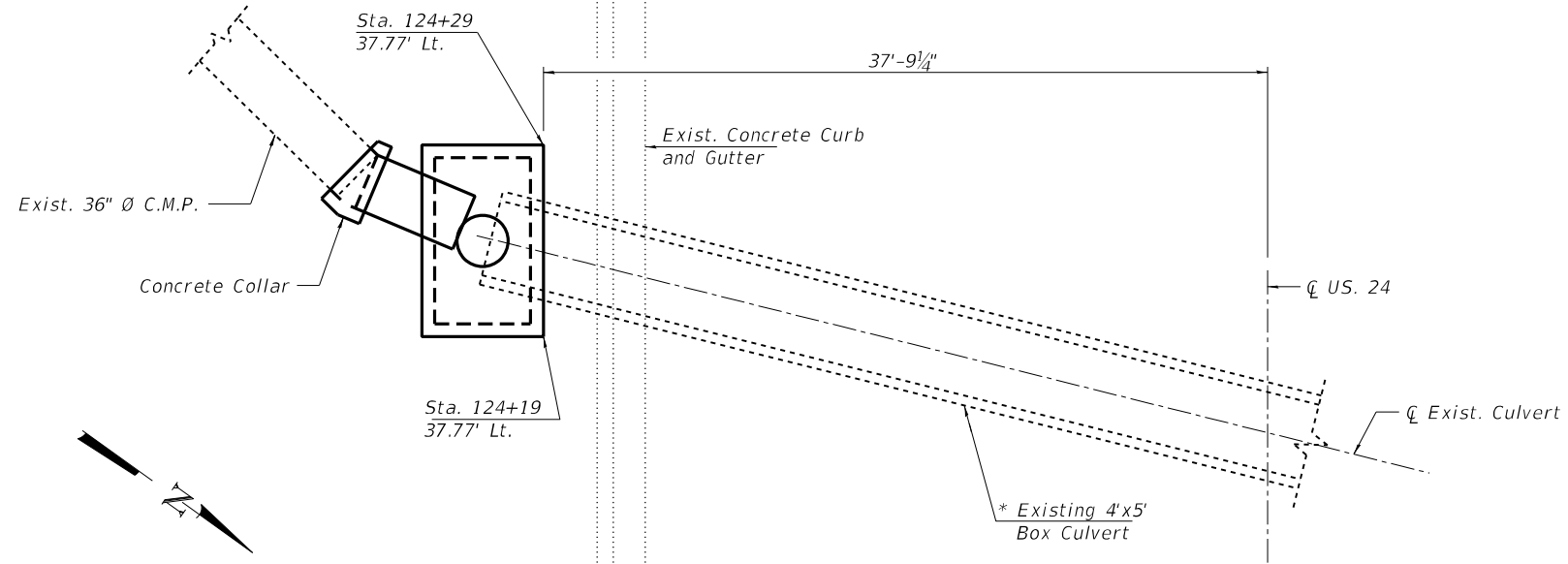


ELEVATION



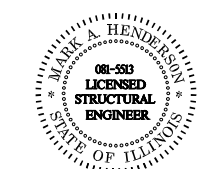
BOX CULVERT REMOVAL PLAN

⊠ - Indicates Box Culvert Removal



PLAN

* See Box Culvert Removal Plan for limits of culvert to be removed



Mark A. Henderson
 Date Signed: 11/1/2021
 Expires: 11/30/2022

GENERAL PLAN & ELEVATION
F.A.P. ROUTE 669 (US 24/IL29)
SECTION 11-DR
TAZEWELL COUNTY
STATION 124+24.00

MODEL: 68F32-01
 FILE NAME: Z:\0 V and K jobs\523 - Illinois Department of Transportation - District 4\5237-004 PTB 198-018 WO-4 Ravine Street Drainage Structure\CADD Drawings\Box Plan.dgn
 11/1/2021 2:09:00 PM



USER NAME =	DESIGNED - K. Fair	REVISED -
PLOT SCALE =	CHECKED - M. Henderson	REVISED -
PLOT DATE = 10-266+-2021	DRAWN - K. Fair	REVISED -
	CHECKED - VR Reddy	REVISED -

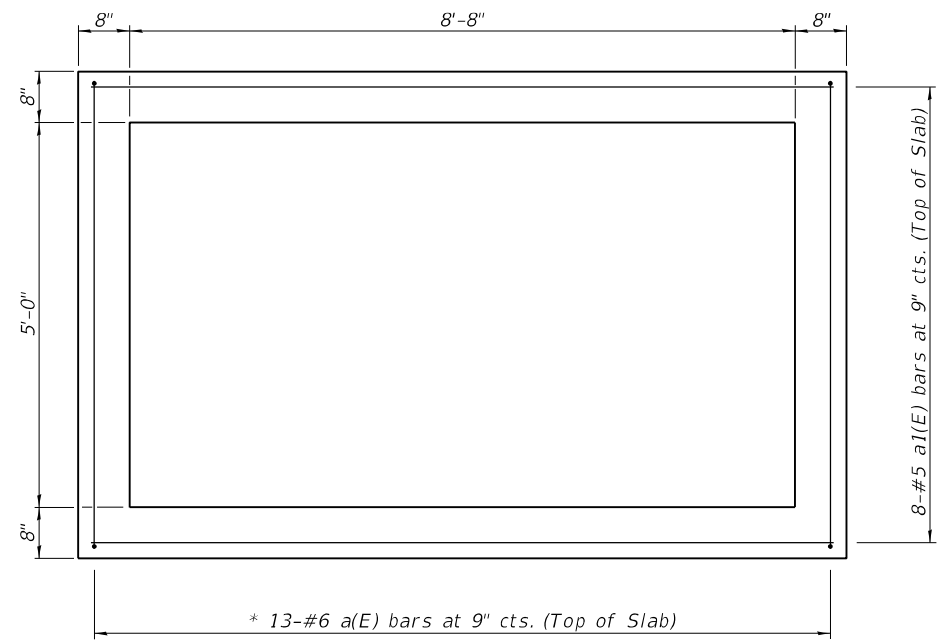
STATE OF ILLINOIS
DEPARTMENT OF TRANSPORTATION

GENERAL PLAN & ELEVATION
DROP STRUCTURE NO. 1

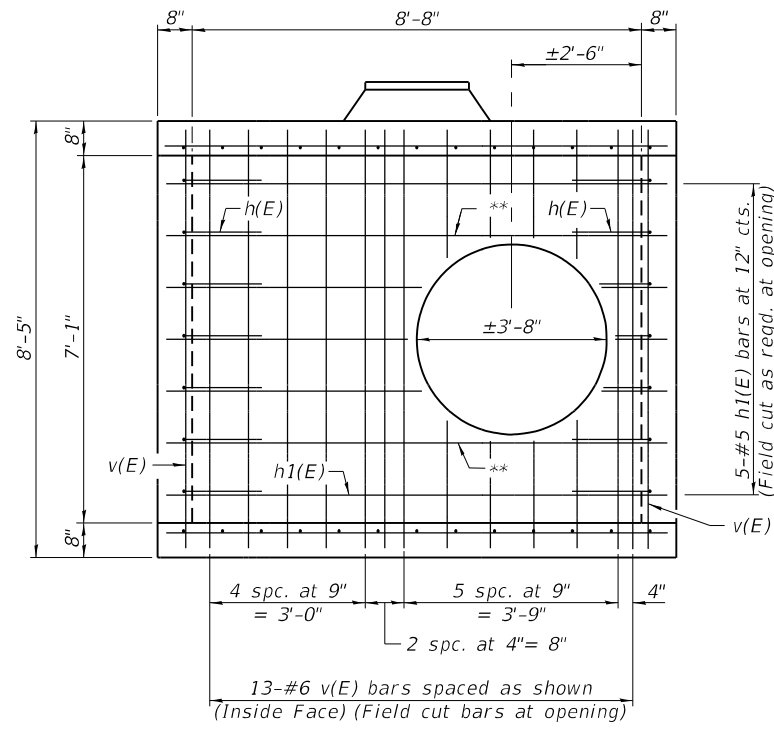
SHEET 1 OF 2 SHEETS

F.A.P. RTE.	SECTION	COUNTY	TOTAL SHEETS	SHEET NO.
669	11-DR	TAZEWELL	24	18
CONTRACT NO. 68F32				
ILLINOIS FED. AID PROJECT				

MODEL: 68F32-02
 FILE NAME: Z:\0 V and K jobs\523 - Illinois Department of Transportation - District 4\5237-004 PTB 198-018 WO-4 Ravine Street Drainage Structure\CADD Drawings\Box Plans.dgn
 11/1/2021 2:42:40 PM

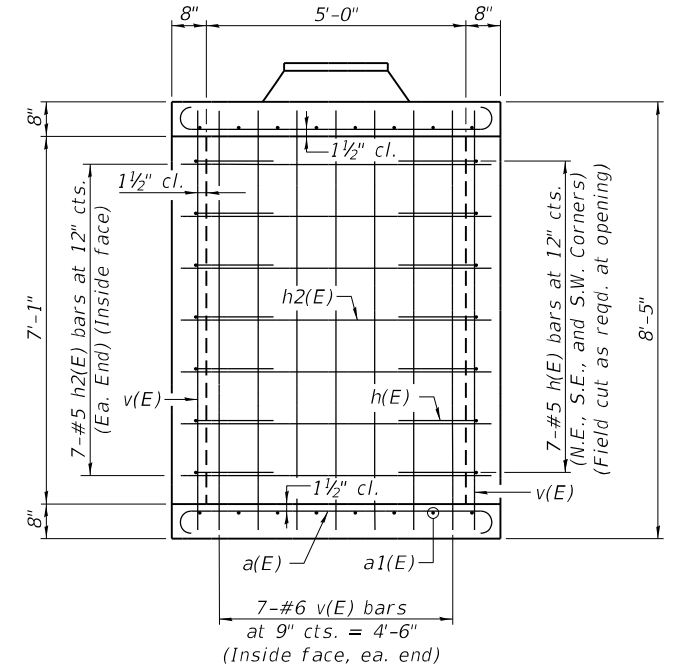


BOTTOM SLAB PLAN

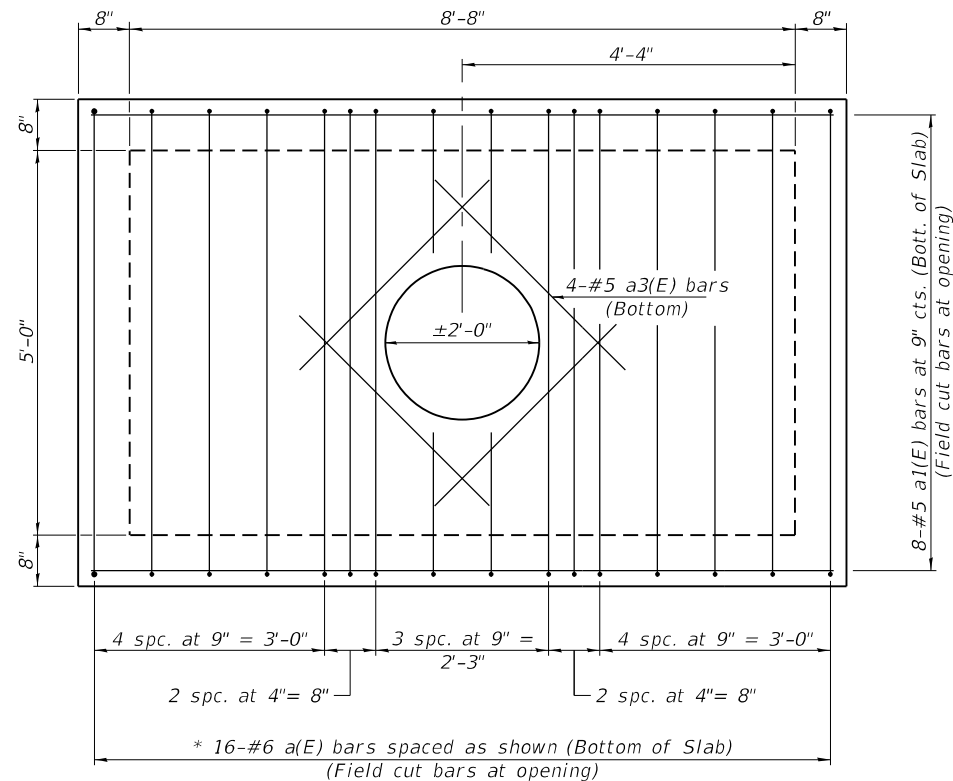


ELEVATION - SOUTH WALL

** Provide 2-#7a2(E) bars above and below opening. (1 each face)

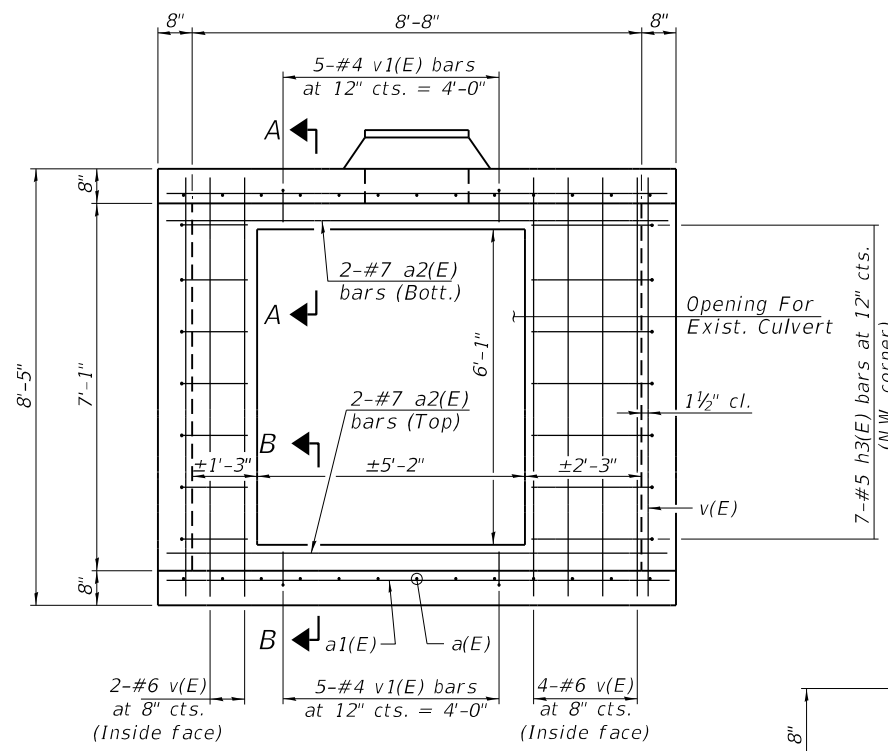


ELEVATION - END WALLS

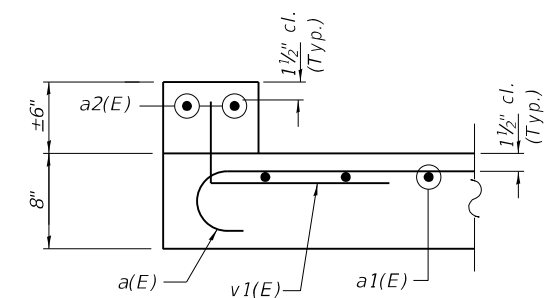


TOP SLAB PLAN

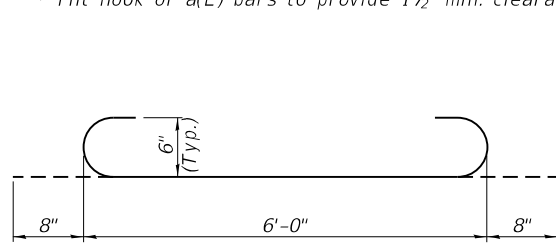
* Tilt hook of a(E) bars to provide 1 1/2" min. clearance.



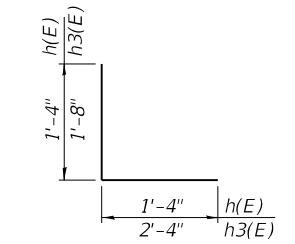
ELEVATION - NORTH WALL



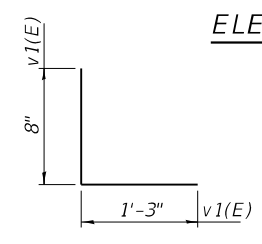
SECTION B-B



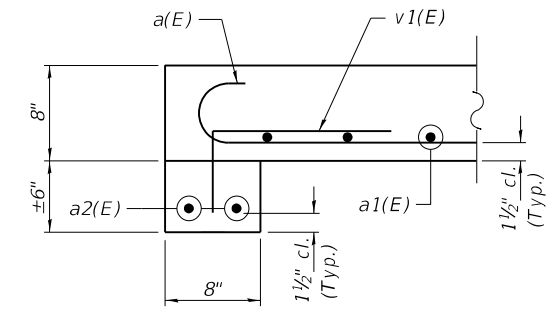
BAR a(E)



BARS h(E) & h3(E)



BAR v1(E)



SECTION A-A

DROP STRUCTURE NO. 1

BILL OF MATERIAL

(FOR INFORMATION ONLY)

Bar	No.	Size	Length	Shape
a(E)	29	#6	7'-4"	U
a1(E)	16	#5	9'-8"	—
a2(E)	8	#7	9'-8"	—
a3(E)	4	#5	3'-4"	—
h(E)	21	#5	2'-8"	L
h1(E)	5	#5	9'-8"	—
h2(E)	14	#5	6'-0"	—
h3(E)	7	#5	4'-0"	L
v(E)	33	#6	8'-1"	—
v1(E)	10	#4	1'-11"	L
Concrete Structures			Cu. Yd.	7.3
Reinforcement Bars, Epoxy Coated			Pound	1300



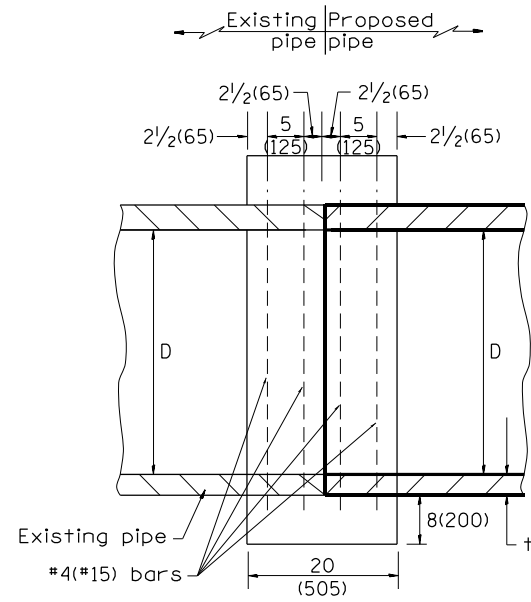
USER NAME =	DESIGNED - K. Fair	REVISED -
PLOT SCALE =	CHECKED - M. Henderson	REVISED -
PLOT DATE = 10-266+-2021	DRAWN - K. Fair	REVISED -
	CHECKED - VR Reddy	REVISED -

**STATE OF ILLINOIS
 DEPARTMENT OF TRANSPORTATION**

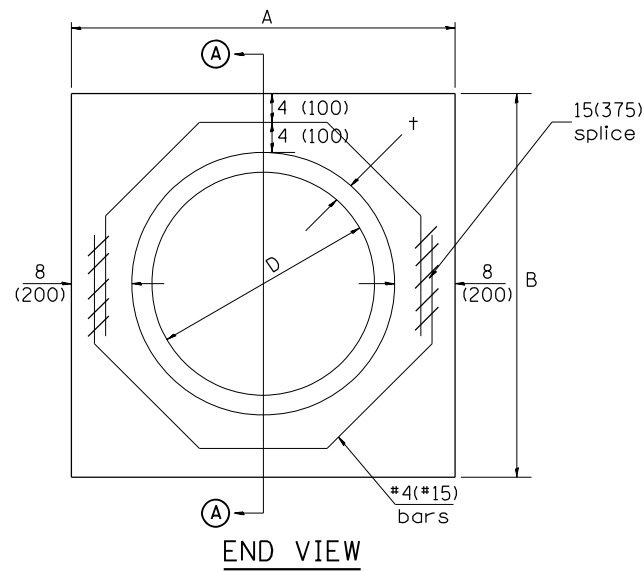
**STRUCTURE DETAILS
 DROP STRUCTURE NO. 1**

SHEET 2 OF 2 SHEETS

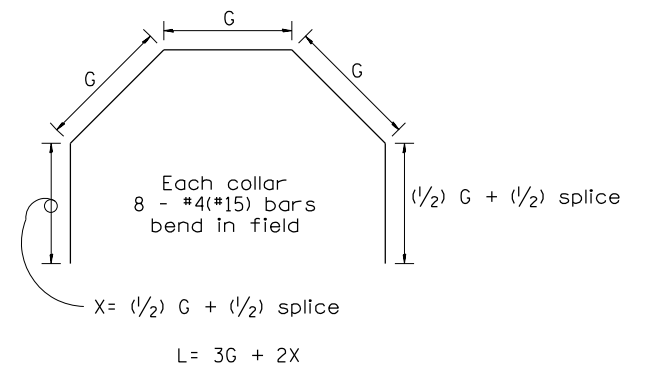
F.A.P. RTE. 669	SECTION 11-DR	COUNTY TAZEWELL	TOTAL SHEETS 24	SHEET NO. 19
CONTRACT NO. 68F32				
ILLINOIS FED. AID PROJECT				



SECTION A - A



END VIEW



Each Collar									
					Reinforcement Bars				
D	t	A	B	CL. SI CONC.	G	X	L	Weight	
in (mm)	in (mm)	ft (m)	ft (m)	cu. yd. (m ³)	in (mm)	in (mm)	ft (m)	lb (kg)	
12 (300)	2.00 (51)	2.67 (0.814)	2.67 (0.814)	0.4 (0.270)	9 ¹⁵ / ₁₆ (253)	12 ⁷ / ₁₆ (317)	4.57 (1.393)	24 (11)	
15 (375)	2.25 (57)	2.96 (0.902)	2.96 (0.902)	0.4 (0.315)	11 ³ / ₈ (290)	13 ³ / ₁₆ (335)	5.05 (1.541)	27 (12)	
18 (450)	2.50 (64)	3.25 (0.991)	3.25 (0.991)	0.5 (0.362)	12 ¹³ / ₁₆ (327)	13 ⁷ / ₈ (354)	5.54 (1.689)	30 (14)	
21 (525)	2.75 (70)	3.54 (1.079)	3.54 (1.079)	0.5 (0.411)	14 ¹ / ₄ (364)	14 ⁵ / ₈ (372)	6.02 (1.836)	32 (15)	
24 (600)	3.00 (76)	3.83 (1.167)	3.84 (1.167)	0.6 (0.460)	15 ¹¹ / ₁₆ (401)	15 ⁵ / ₁₆ (391)	6.51 (1.984)	35 (16)	
27 (675)	3.25 (83)	4.13 (1.259)	4.13 (1.259)	0.7 (0.516)	17 ¹ / ₄ (438)	16 ¹ / ₁₆ (409)	6.99 (2.131)	37 (17)	
30 (750)	3.50 (89)	4.42 (1.347)	4.42 (1.347)	0.7 (0.570)	18 ¹¹ / ₁₆ (475)	16 ³ / ₄ (428)	7.48 (2.279)	40 (18)	
33 (825)	3.75 (95)	4.71 (1.436)	4.71 (1.436)	0.8 (0.624)	20 ¹ / ₈ (512)	17 ¹ / ₂ (446)	7.96 (2.426)	43 (19)	
36 (900)	4.00 (102)	5.00 (1.524)	5.00 (1.524)	0.9 (0.682)	21 ⁹ / ₁₆ (549)	18 ³ / ₁₆ (465)	8.44 (2.574)	45 (20)	
42 (1050)	4.50 (114)	5.58 (1.701)	5.58 (1.701)	1.0 (.800)	24 ⁷ / ₁₆ (622)	19 ³ / ₄ (501)	9.41 (2.869)	50 (23)	
48 (1200)	5.00 (127)	6.17 (1.881)	6.17 (1.881)	1.2 (0.930)	27 ⁵ / ₁₆ (696)	21 ³ / ₁₆ (538)	10.38 (3.164)	55 (25)	

GENERAL NOTES

1. THE COLLAR SHALL BE CONSTRUCTED ENTIRELY OF CLASS SI CONCRETE IN ACCORDANCE WITH THE APPLICABLE PORTIONS OF SECTION 503 OF THE STANDARD SPECIFICATIONS. REINFORCEMENT BARS SHALL CONFORM TO SECTION 508.
2. This work shall be paid for by the cubic yard (cubic meter) for CONCRETE COLLAR and by the pound (kg) for REINFORCEMENT BARS.

QUANTITIES	
CALC. BY: R. J. D.	2-2-98 DATE:
CHECKED BY: R. D. H.	2-6-98 DATE:

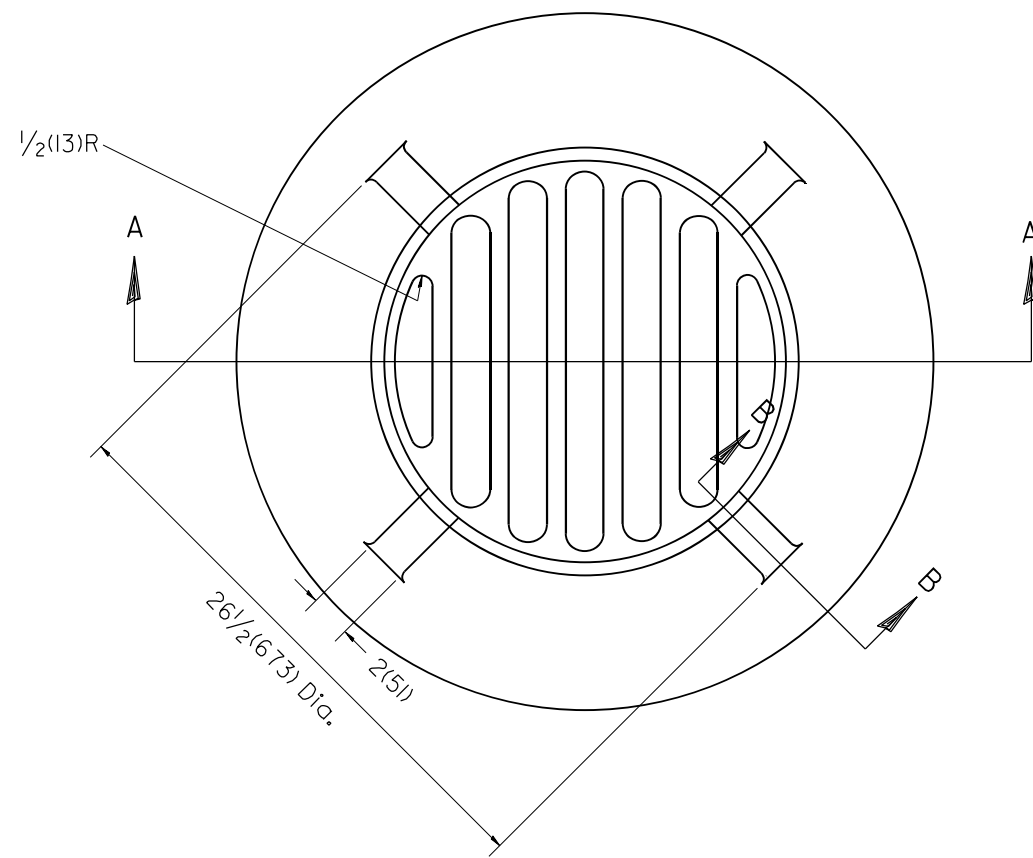
QUANTITY CALCULATIONS ARE ON FILE AT THE DISTRICT 4 OFFICE; BUREAU OF PROJECT IMPLEMENTATION; DOCUMENTATION SECTION

All dimensions are in inches (millimeters) unless otherwise noted.

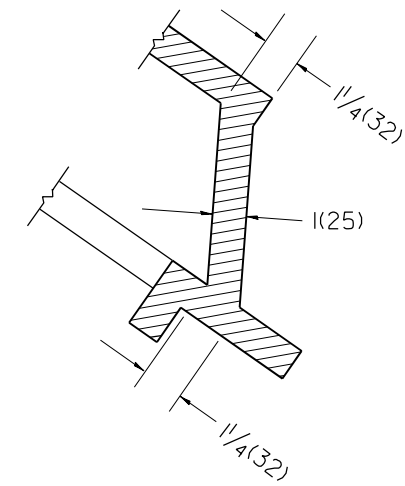
01-01-97	RENUM. B-8.03, NEW REVISION BOX, REVISED	T.P.	09-01-00	CORRECT WEIGHT	J.A.	STATE OF ILLINOIS DEPARTMENT OF TRANSPORTATION	PIPE CULVERT EXTENSION COLLAR (WITHOUT END SECTION)	F.A.P. RTE.	SECTION	COUNTY	TOTAL SHEETS	SHEET NO.	
	TITLE BOX, ADDED QUANTITY CALCULATION BOX		10-16-06	REV. TO 2007 SPEC., CORRECT mm UNITS	M.A.			669	11-DR	TAZEWELL	24	20	
04-01-97	CORRECT BAR	J.A.	2-15-11	ADDED GENERAL NOTE #2	R.D.			CONTRACT NO. 68F32					
02-10-98	REVISE QUANTITIES	J.A.						FED. ROAD DIST. NO. ILLINOIS FED. AID PROJECT					

NOT TO SCALE

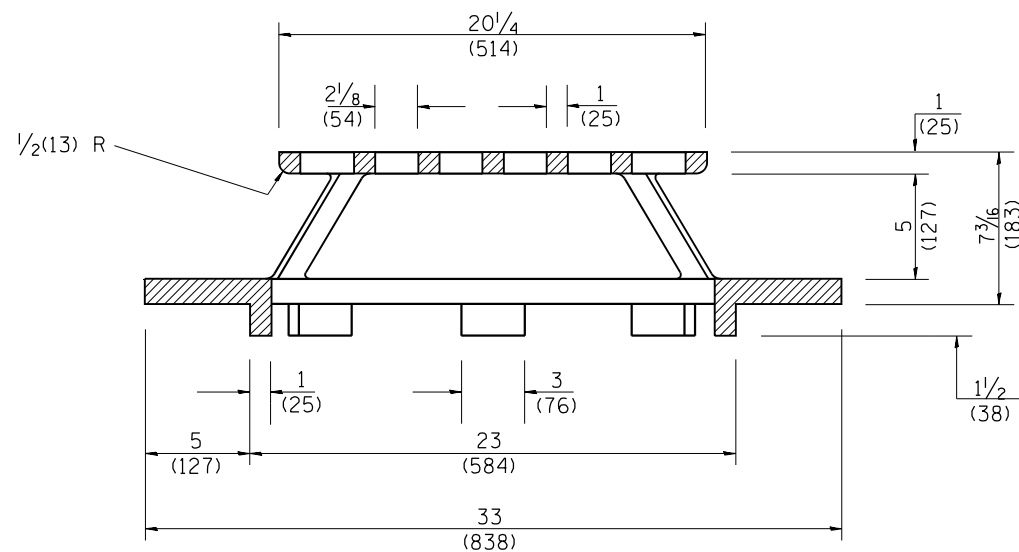
CADD STD. 542016-D4



PLAN



SECTION B - B



SECTION A - A

GENERAL NOTES

1. MATERIAL - Cast Gray Iron
Weight 209 lbs (95 kg)

All dimensions are in inches (millimeters) unless otherwise noted.

01-01-97	RENUM. B-10.02, NEW REVISION BOX	T.P.
10-16-06	REVISED TO 2007 SPEC.	M.A.

STATE OF ILLINOIS
DEPARTMENT OF TRANSPORTATION

TYPE 37 GRATE

NOT TO SCALE

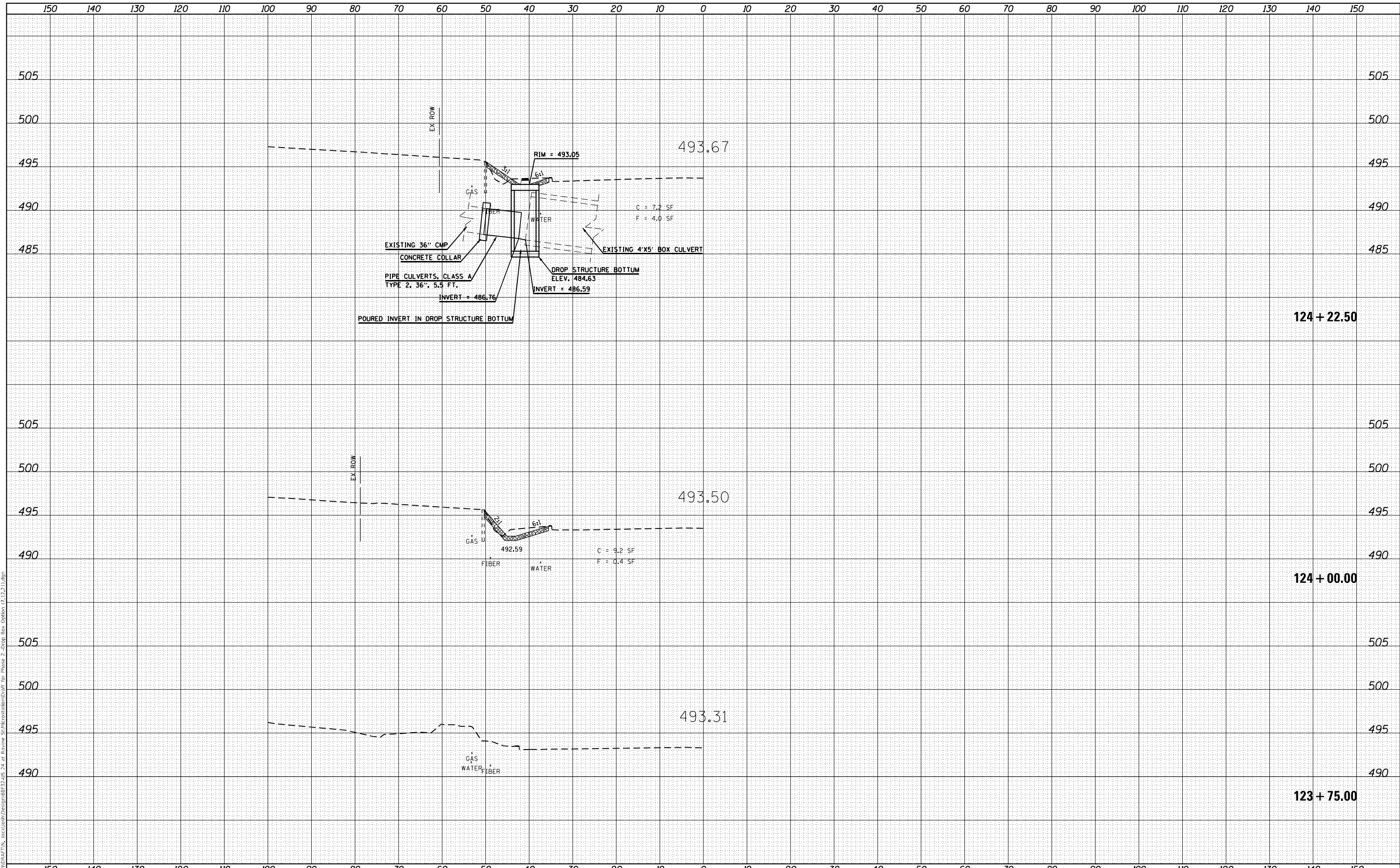
CADD STD. 604301-D4

F.A.P. RTE.	SECTION	COUNTY	TOTAL SHEETS	SHEET NO.
669	11-DR	TAZEWELL	24	21
FED. ROAD DIST. NO.			ILLINOIS FED. AID PROJECT	
			CONTRACT NO. 68F32	

DATE	
BY	
SURVEYED	
PLOTTED	
TEMPLATE	
AREAS CHECKED	
FINAL SURVEY	
NOTE BOOK	
NO.	

DATE	
BY	
SURVEYED	
PLOTTED	
TEMPLATE	
AREAS CHECKED	
ORIGINAL SURVEY	
NOTE BOOK	
NO.	

MODEL: Drift and Cross Section Sheets
FILE NAME: S:\ENR\DR\ATM_Rec\Drawings\Design\68F32\5 24 at Rovine Station\Station\Drift for Phase 2 - Drop Box Option (7.12.21).dgn



USER NAME = jochumsgj	DESIGNED -	REVISED -
	DRAWN -	REVISED -
PLOT SCALE = 0.7874' / mm	CHECKED -	REVISED -
PLOT DATE = 12/1/2021	DATE -	REVISED -

**STATE OF ILLINOIS
DEPARTMENT OF TRANSPORTATION**

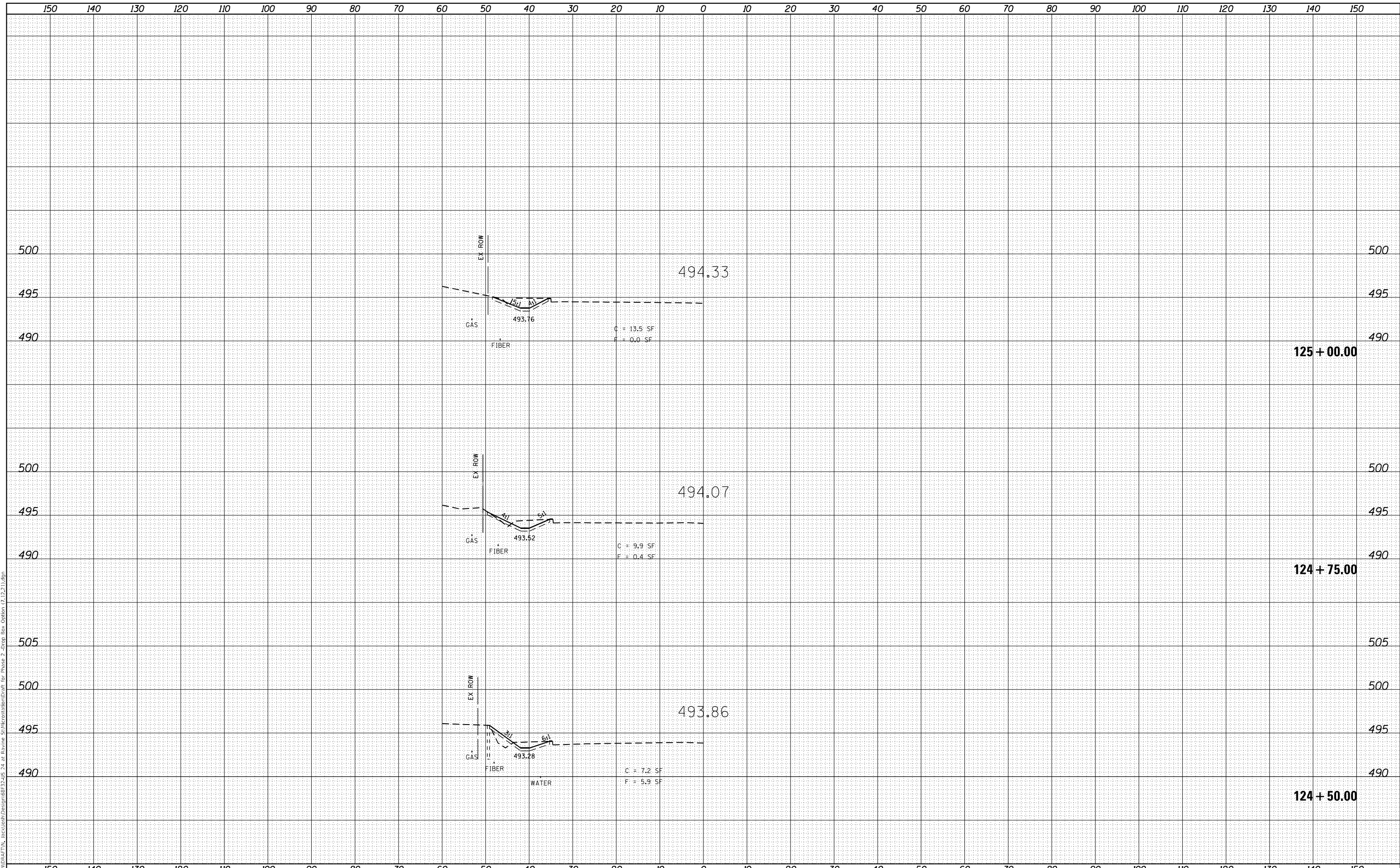
CROSS SECTIONS			
F.A.P. RTE. 669	SECTION 11-DR	COUNTY TAZEWELL	TOTAL SHEETS 24 SHEET NO. 22
SCALE:	SHEET	OF SHEETS	STA. 123+75.00 TO STA. 124+22.50

F.A.P. RTE. 669	SECTION 11-DR	COUNTY TAZEWELL	TOTAL SHEETS 24 SHEET NO. 22
CONTRACT NO. 68F32			
ILLINOIS FED. AID PROJECT			

FINAL SURVEY NO.	SURVEYED	DATE
NOTE BOOK	PLOTTED	
	TEMPLATE	
	AREAS CHECKED	

ORIGINAL SURVEY NO.	SURVEYED	DATE
NOTE BOOK	PLOTTED	
	TEMPLATE	
	AREAS CHECKED	

MODEL: Drift and Cross Section Sheets
 FILE NAME: S:\ENR\DR\ATM_B\cros\Design\68F32-24 at Ravine Station\Station\Drift for Phase 2 -Job Bbs Option 17.12.21.dgn



USER NAME = jochumsg	DESIGNED -	REVISD -
	DRAWN -	REVISD -
PLOT SCALE = 0.7874' / mm	CHECKED -	REVISD -
PLOT DATE = 12/1/2021	DATE -	REVISD -

**STATE OF ILLINOIS
DEPARTMENT OF TRANSPORTATION**

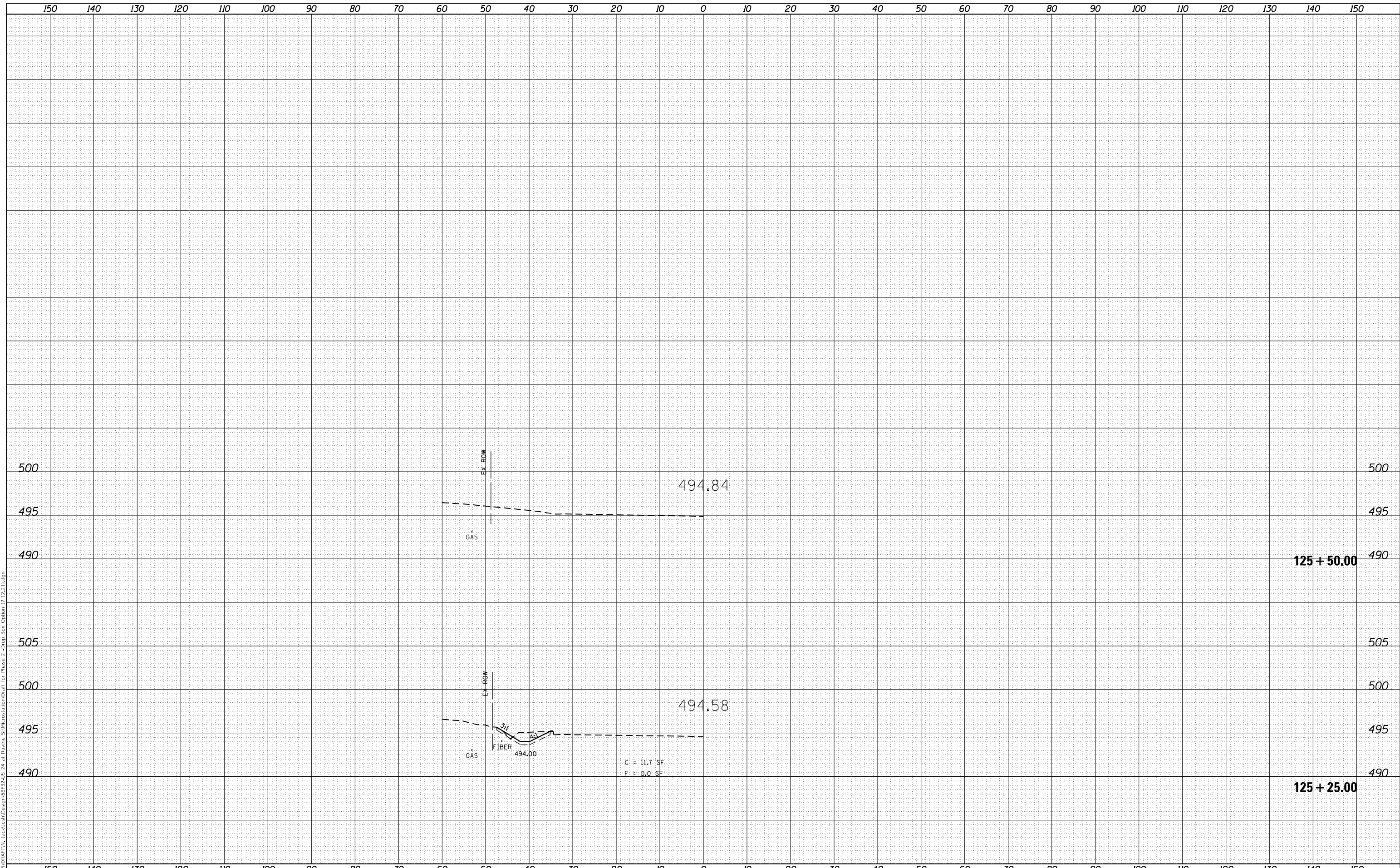
CROSS SECTIONS	
SCALE:	SHEET OF SHEETS STA. 124+50.00 TO STA. 125+00.00

F.A.P. RTE. 669	SECTION 11-DR	COUNTY TAZEWELL	TOTAL SHEETS 24	SHEET NO. 23
CONTRACT NO. 68F32				ILLINOIS FED. AID PROJECT

FINAL SURVEY NO.	SURVEYED	BY	DATE
NOTE BOOK	PLOTTED		
AREAS CHECKED	TEMPLATE		
	AREAS CHECKED		

ORIGINAL SURVEY NO.	SURVEYED	BY	DATE
NOTE BOOK	PLOTTED		
AREAS CHECKED	TEMPLATE		
	AREAS CHECKED		

MODEL: Drift and Cross Section Sheets
 FILE NAME: S:\ENR\DR\ATM_B\cros\Design\68F32-5 24 at Ravine Station\Station\Drift for Phase 2 -Job Bbs. Option 17.12.21.dgn



**STATE OF ILLINOIS
 DEPARTMENT OF TRANSPORTATION**

CROSS SECTIONS

USER NAME = jochumsgj	DESIGNED -	REVISED -	SCALE: SHEET OF SHEETS STA. 125+25.00 TO STA. 125+50.00	F.A.P. RTE. 669	SECTION 11-DR	COUNTY TAZEWELL	TOTAL SHEETS 24	SHEET NO. 24
PLOT SCALE = 0.7874' / mm	DRAWN -	REVISED -		CONTRACT NO. 68F32				
PLOT DATE = 12/1/2021	CHECKED -	REVISED -		ILLINOIS FED. AID PROJECT				
	DATE -	REVISED -						